



Introducing the new Lagoon 440 – Evolution At Its Best..

Available for charter for
Christmas
and
New Years 2004!

BAREBOAT CHARTER

BAREBOAT

BAREBOAT CREWED

- Lagoon 380
- Lagoon 410
- Privilege 42
- Belize 43
- Lagoon LP43
- Catana 431
- Lagoon 440**
- Privilege 455
- Bahia 46
- Privilege 465
- Lagoon 470

LAGOON 440

FLYBRIDGE



MAIN FEATURES

- Year: 2005
- Length: 44'8"
- Beam: 25'2"
- Draft: 4'3"
- Engines: 2 x 75 Yanmar HP
- Water: 240 gallons
- Fuel: 170 gallons
- Sail area: 1293 sq.ft. cruising
- Average Interior Headroom: 6'9"
- Maximum amount of guests: 8

SPACIOUS SALON



LARGE, AIRY CABINS



Enjoy modern design that has perfect seating ergonomics, immense space, generous spread of storage and easy maneuverability guaranteeing friends and family a successful sailing vacation.

The Lagoon 440 has the latest rigid bimini with an integral helm station. An extra-wide bench seat has been provided on the flybridge where guests can join the helmsman and participate in the joys of sailing. The helm station is surrounded by all the sail control lines, reefing included, so that one person can easily handle all the maneuvers.

Inside, the galley is similar to that of the Lagoon 380, with a large serving shelf extended towards the cockpit, a countertop surface worthy of one found in a house, with immense storage including a big cookware locker. Her shape has been studied carefully to associate practicality with ergonomics: the seats are luxurious yet accessible and movement is easy.

READ MORE ON OUR WEBSITE



Phone: 1-800-262-0208 email: info@catamarans.com

SAILING VACATION SEASONS AND RATES

	Dec 22 - Jan 6 Jan 25 - April 7	Jan 7 - Jan 24 April 8 - May 19	May 20 - July 28 Oct 25 - Dec 20	July 29 - Oct 24
Weekly	\$7980	\$6790	\$6370	\$4690
Daily	\$1140	\$970	\$910	\$670

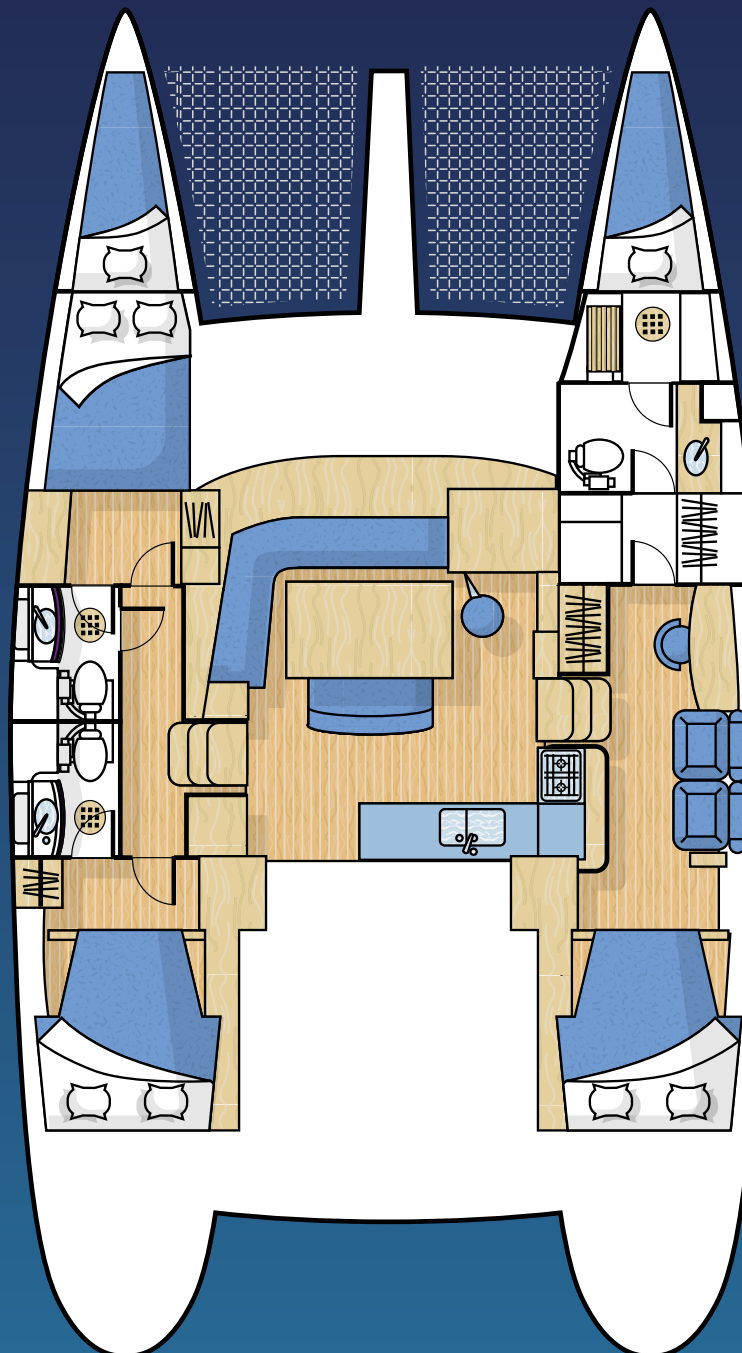
GUEST COMMENTS

We visited Miami Boat Show in Feb of 2004, we came to buy a different catamaran but we laid our eyes on the Lagoon 440 and changed our minds instantly. This design and layout cannot be beat and is the best catamaran on the market. You won't be disappointed chartering her!
- Owner - Ron Gilden, KY

We have been waiting and waiting for The Catamaran Company to get a Lagoon 440 into charter. It is finally here and we can't wait to test out that fly bridge and socialize with our friends while sailing!
- Katherine Marks, PA

Lagoon celebrates its 20th year in Catamaran Design. They just keep getting better and better. The highly anticipated Lagoon 440 has been worth the wait.
- Hugh Murray,
CEO – The Catamaran Company

Owners Version. Year 2005. Three queen size cabins and 3 heads/showers. Two additional crew berths forward bow. Available British Virgin Islands, Tortola.



CHARTER GEAR

Linens/Towels (except beach towels), Snorkeling gear, First Aid Kit, Navigation and tool kit, Local cruising guide & local charts, Head and Galley cleaning kit, Binoculars and life jackets, Fully equipped galley, 1st tank of fuel, water & outboard gas/oil, Stanchion-mounted charcoal barbecue, Soundproof genset/air conditioning, Dinghy & outboard.

Enjoy maximum comfort and state-of-the art design. The fly bridge enhances the Lagoon 440 as the ultimate charter catamaran to choose for your sailing vacation. Your friends, family or colleagues will not be disappointed with your choice and just simply impressed. Catamaran Company is renowned for pristine maintained catamarans and service. Feel confident that every aspect has been considered from the booking process to how your catamaran is equipped while sailing.

LAGOON 440

- MAIN FEATURES**
- Model: Lagoon 440
 - Year: 2005
 - Length: 44'8"
 - Beam: 25'2"
 - Draft: 4'3"
 - Engines: 2 x 75 Yanmar HP
 - Water: 240 gallons
 - Fuel: 170 gallons
 - Sail area: 1293 sqft cruising
 - Average interior headroom: 6'9"
 - Maximum amount of guests: 8 (eight)
- ACCOMMODATIONS**
- Cabins/Berths: 3 queens cabins & 2 single berths (8 guests)
 - Forward port berths (queen beds): 6'7" x 5'2"
 - Aft port berths: 6'7" x 5'2"
 - Port midship berth: 2'2" x 6'
 - Owners starboard berth: 6'7" x 5'2"
 - Crew berths forward bow: 3'5" x 6'3" (x 2)
 - Heads: Three (3)
 - Mosquito screens and window blinds in heads: Yes, throughout.
- DECK GEAR**
- Sides around aft cockpit: Aft cockpit floor in teak
 - Electric winch for davits (40): 2 Genot electric winch (54)
 - Pulpit with wooden seat: Pair of off white sun lounge pads
 - AFT off white cockpit seat cushions: FWD off white cockpit cushions
 - 12-v cockpit fridge: 110-v Icemaker in cockpit
- COCKPIT**
- Large cockpit functions as deck salon, protected by fixed composite bimini with cockpit lighting
 - U-shape foredeck seating area with genset locker
 - Fixed varnished cockpit table accommodates 8 / 10 people, with protective cover
 - Forward Deck built in seating area that accommodates 8 people.
- ELECTRICAL CIRCUIT**
- Charter Inverter 12/110 v 2000
 - Genset Onan 11 KVA 110v/60 HZ with Cocoon
 - Additional 140-amp battery
- HI-FI & ELECTRONICS**
- Radio/CD Changer Laser & 2 loudspeakers in salon
 - Waterproof loudspeakers in cockpit
 - wind, depth, speed, autopilot ST6001 with 2 displays, chartplotter, GPS, radar
 - Internet Access
 - Rudder tiller at nav stat., VHF with double handset
- SALON**
- Large main salon with panoramic view – standing headroom approx: 6'9"
 - Varnished coffee table that can be replaced by a large cockpit table
 - Bench seating for 8/10 people
 - Double settee with two back galley-side drawers
 - Large locking aluminum sliding cockpit door
 - Cabinet for TV/Hifi on port side aft
 - 2 opening hatches on forward windows
 - 2 opening deck hatches
 - Flat screen plasma TV
- GALLEY**
- Galley in main salon to starboard with direct access to cockpit through sliding window
 - Stainless steel countertop
 - Double s/s sink with mixer tap
 - Integrated dish drainage area.
 - Storage under sink
 - 3 burner stove / oven with grill (LPG)
 - 12V fridge 150L / 40 gallons, front loading
 - 2nd 12V Fridge 150L / 40 gallons – transformable in freezer (optional) 100 liters / 26 Gallons
- FLYBRIDGE**
- Twin deck access stairways, one from each side
 - Large bench seat for 6 people with beige PVC cushions
 - Ergonomically-designed helm station with leathered wheel, engine throttles, engine panels, hour meters, fuel gauges, compass, plexiglass-protected chart storage, cup holders, rope storage.
 - Folding dark-blue canvas bimini on stainless steel frame over the helm post, with removable clear windscreen, and protective storage cover.