

Supreme 68p



THIS ARRANGEMENT PLAN DOES NOT DETERMINE THE FINAL PRODUCT AND SERVES ONLY FOR VIEWING PURPOSES. IT MAY CONTAIN EQUIPMENT AND ACCESSORIES WHICH ARE NOT DELIVERED IF NOT EXPLICITLY ORDERED BY THE BUYER. IN CASE OF DISCREPANCY BETWEEN THE ARRANGEMENT PLAN AND THE SPECIFICATION THE SPECIFICATION SHALL PREVAIL.

Supreme 68p



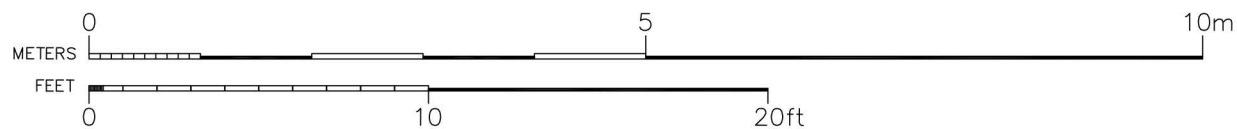
THIS ARRANGEMENT PLAN DOES NOT DETERMINE THE FINAL PRODUCT AND SERVES ONLY FOR VIEWING PURPOSES. IT MAY CONTAIN EQUIPMENT AND ACCESSORIES WHICH ARE NOT DELIVERED IF NOT EXPLICITLY ORDERED BY THE BUYER. IN CASE OF DISCREPANCY BETWEEN THE ARRANGEMENT PLAN AND THE SPECIFICATION THE SPECIFICATION SHALL PREVAIL.

Supreme 68p



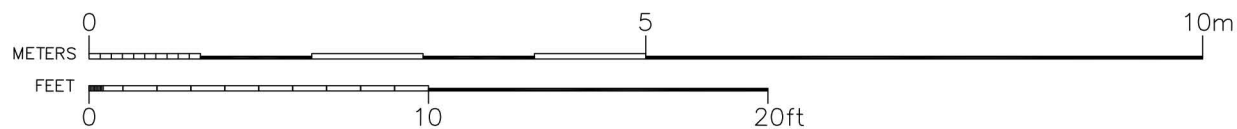
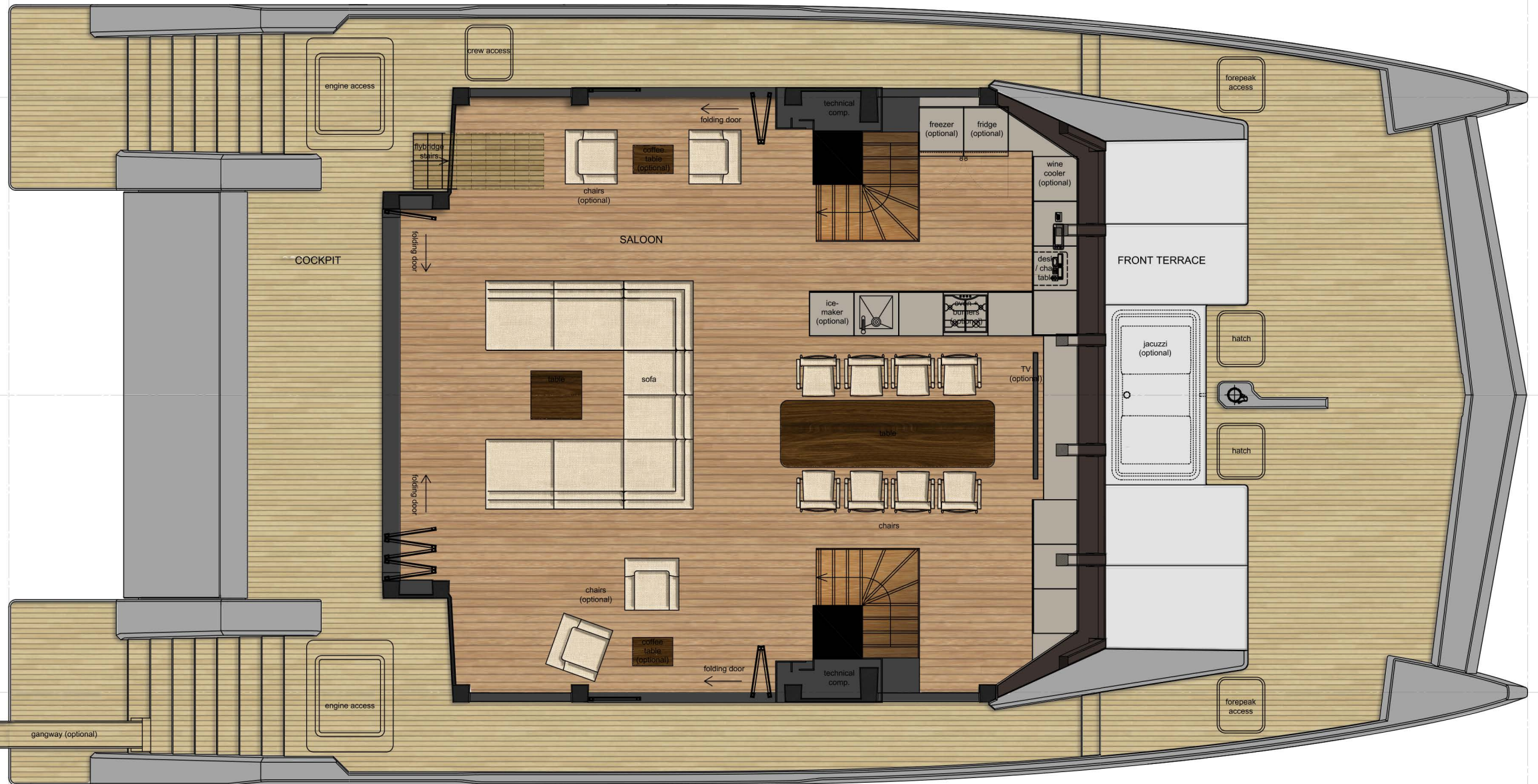
THIS ARRANGEMENT PLAN DOES NOT DETERMINE THE FINAL PRODUCT AND SERVES ONLY FOR VIEWING PURPOSES. IT MAY CONTAIN EQUIPMENT AND ACCESSORIES WHICH ARE NOT DELIVERED IF NOT EXPLICITLY ORDERED BY THE BUYER. IN CASE OF DISCREPANCY BETWEEN THE ARRANGEMENT PLAN AND THE SPECIFICATION THE SPECIFICATION SHALL PREVAIL.

Supreme 68p



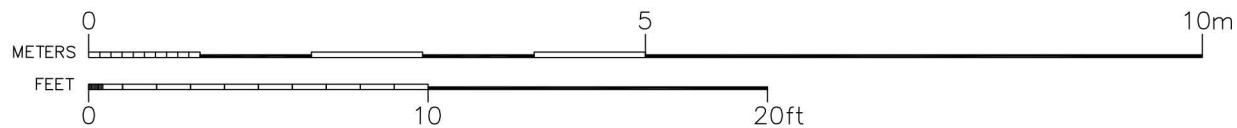
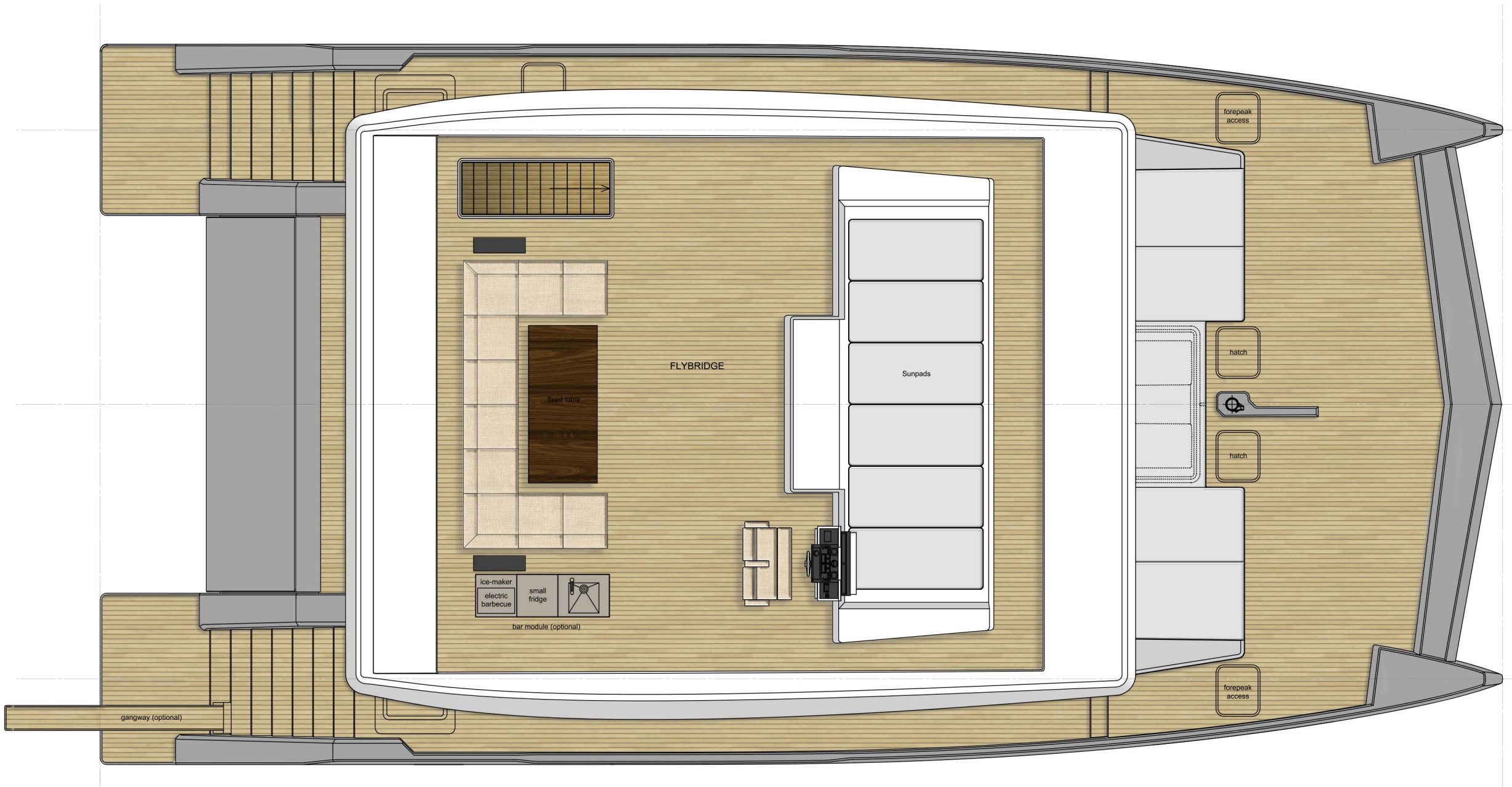
THIS ARRANGEMENT PLAN DOES NOT DETERMINE THE FINAL PRODUCT AND SERVES ONLY FOR VIEWING PURPOSES. IT MAY CONTAIN EQUIPMENT AND ACCESSORIES WHICH ARE NOT DELIVERED IF NOT EXPLICITLY ORDERED BY THE BUYER. IN CASE OF DISCREPANCY BETWEEN THE ARRANGEMENT PLAN AND THE SPECIFICATION THE SPECIFICATION SHALL PREVAIL.

Supreme 68p



THIS ARRANGEMENT PLAN DOES NOT DETERMINE THE FINAL PRODUCT AND SERVES ONLY FOR VIEWING PURPOSES. IT MAY CONTAIN EQUIPMENT AND ACCESORIES WHICH ARE NOT DELIVERED IF NOT EXPLICITLY ORDERED BY THE BUYER. IN CASE OF DISCREPANCY BETWEEN THE ARRANGEMENT PLAN AND THE SPECIFICATION THE SPECIFICATION SHALL PREVAIL.

Supreme 68p



THIS ARRANGEMENT PLAN DOES NOT DETERMINE THE FINAL PRODUCT AND SERVES ONLY FOR VIEWING PURPOSES. IT MAY CONTAIN EQUIPMENT AND ACCESSORIES WHICH ARE NOT DELIVERED IF NOT EXPLICITLY ORDERED BY THE BUYER. IN CASE OF DISCREPANCY BETWEEN THE ARRANGEMENT PLAN AND THE SPECIFICATION THE SPECIFICATION SHALL PREVAIL.