

2025 FP Samana 59 BROCHURE FOUNTAINE PAJOT SAMANA 59



Basic Vessel Summary

Manufacturer:	FOUNTAINE PAJOT
Model:	FP Samana 59
Model Year:	2025
Type of Yacht:	Sail
Price:	Price on Application
Condition:	Brochure
Status:	Catamaran for Sale
Location	France
Manuf. Length:	61' 6" (18.75 m)
Maximum Draft:	5' 4" (1.63 m)
Beam:	31' 03" (9.53 m)
Fuel Capacity:	317 g
Water Capacity:	304 g
Weight - Displacement:	28.2 ton (56400 lb)
Hull Material:	Fiberglass Reinforced Plastic- FRP
Hull Configuration:	Catamaran
Engine Condition	New

Boat Description:

The Fountaine Pajot Samana 59 is the pinnacle of luxury sailing, designed for those who seek elegance, performance, and comfort at sea.

CALIFORNIA RETAIL – PURCHASE FOR CHARTER.

This exceptional sailing catamaran offers an expansive and intelligently designed layout, providing a seamless blend of indoor and outdoor living.

The spacious cockpit, flybridge, and forward lounge create inviting spaces for relaxation and entertainment, while the bright and modern interior is crafted with high-end finishes and ample natural light.

Designed with versatility in mind, the Samana 59 is available in multiple configurations, making it ideal for private ownership or charter investment.

Its well-appointed cabins offer supreme comfort, and the generous master suite provides a private oasis onboard.

The fully equipped galley, large salon, and panoramic windows enhance the luxurious experience, ensuring every journey is both stylish and enjoyable.

Built for smooth, efficient, and stable sailing, the Samana 59 delivers top-tier performance for long-range cruising or island-hopping adventures.

Whether you're looking for a high-end sailing catamaran for personal enjoyment or a turn-key charter investment, this model offers an unparalleled opportunity.

Contact us today to learn more about the Fountaine Pajot Samana 59 and start your next adventure!

Full Specification

Layout & Accommodations

Configurations

Grand Large Version:

Curtains in cabins

Mooring kit + 6 fenders

Genoa Electrical Furler

CST mainsail full batten

Lazy jack
Electrical windlass 2000 Watts
1 electrical winch for main halyard
Two pulpit seats
Hot/cold water on 1 deck shower
Dralon protective cover for wheel
Multipexage monitor 7 "
VHF mast head antenna prewired

Oceanic Vesion: Includes all option from the Grand Large Version plus
Lazybag
Outdoor cushions
Interior courtesy lighting
Exterior courtesy lighting
2 Genoa electric winches
1 Main sheet electric winch
Pressurized seawater system (2 outlets)
Main grid 220V 50HZ or 60HZ
Charger/inverter 5000W / 120 A

Comfort Version: Includes all options from the Oceanic Version plus
Additional electric freshwater pump
Audio & Video pack (TV 50") (TV system PAL & SECAM)
Solar panels 3 x 170 W
Kitchen furniture on fly bridge

Saddlery:

Hull floor carpet for Maestro cabin
Grey outdoor upholstery
Papyrus color fabric outdoor upholstery
Anthracite grey color PVC outdoor upholstery
Beige / grey color PVC outdoor upholstery
Papyrus color PVC outdoor canvas
Nature PVC outdoor canvas
Muscade PVC outdoor canvas
Flanelle color fabric indoor upholstery
Granit color fabric indoor upholstery
Argile color fabric indoor upholstery
Marble color fabric indoor upholstery
Glacier color fabric indoor upholstery

Interior Equipment:

Combination locking safe

Saloon curtains pleated blinds

Port forepeak fitting out (bed + head)

Starboard forepeak fitting out (bed + head)

Handrail in Staircase

Electrical salon coffee table convertible into a dinner table

Additional electric freshwater pump (Inc. Cft)

Galley

Household Appliances and Comfort Options:

Additional 220V 130L fridge for galley down

Additional 90 L 220V freezer for galley down

Additional 220V 130L fridge for galley up

Additional 220V 90L freezer for galley up

Microwaves oven 220V - 50Hz only

Sink grinder

Dishwasher 12 place settings

Washing machine 5Kg 220V - 50 Hz only

Washing machine/Dryer 220V - 50 Hz only

Wine cellar for 23 bottles

1 fresh water electric head

Cold Water Fountain

Mechanical ventilation for all cabins

Grey water tank

Full air conditioning

Deck & Equipment

Exterior Equipment Options:

Manual carbon gangway

Hard Top (Sail)

Cockpit sun awning

Fixed flydeck bimini

Cockpit tent

Exterior window blinds for saloon

Sun awning on the foredeck saloon

2nd swim ladder

Kitchen furniture on fly bridge (Inc.Cft)

Teak floor cockpit

Synthetic teak cockpit floor

Teak floor front cockpit
Synthetic teak front cockpit
Teak on side decks
Synthetic teak on side decks
Teak on flydeck
Synthetic teak on flydeck
Additional Mooring Cleats
1 cockpit fridge 65L
2 cockpit fridges 65L
Icemaker (cockpit)
Fridge 65L on the Flybridge (Inc.Cft)
Gas plancha
Exterior fresh water (2 outlets)

Electronics & Navigation

Electronics Options:

Additional 7" monitoring screen

Aft camera

Radar

HI-FI video pack for owner's cabin (TV 32")(TV PAL & SECAM)

Pack Garmin 1

Pack Garmin 2

Pack Garmin 3

Flying bridge Hifi + 4 speakers (Inc.Cft)

Audio & Video pack (TV 50") (Incl. Cft)(TV system PAL & SECAM)(Inc. Cft)

Satellite Communication

Wifi amplifier

Navigation Options:

Gennaker (without gear - Req. OPT0601450)

Staysail on electric furler

Mast and boom painted white (Requires OPT0601340)

Carbon mast

Hydranet performance sails

Canoë boom with lazy bag

Gennaker furler and gear (without winch)

2 rope cutters

Windlass control on helm station

Hydraulic aluminium davits + SUP cradle

Tenderlift hydraulic platform (450kg max)

Antifouling, primary epoxy

2 capstans in cockpit
Carbon line steering wheel

Electrical, Power & Plumbing

Electricity and Lighting Options:

Mast lighting
Underwater lighting 2x50 W
Additional AGM battery 24V - 150AH
Solar panels 3 x 170 W (Inc.Cft)
Additional shore plug 220V-50Hz (Req. OPT0605510)
220V plugs in addition to OPT0605510
17 kW 220V 50HZ genset
2 synchronisable gensets - FISHER PANDA 12 kW 50-60 Hz
Watermaker 220L/H - 220V (Req. OPT0605650, 5660 or 5670)
Pre-installation of watermaker
Galvanic Isolator

Power Options:

Additional shore plug 220V-60HZ
Inverter 50 Hz for OPT 3160/3220/3230/3250 on 60 HZ network
110V plugs in addition to OPT0605500
17 kW 220V 60HZ genset

Engine & Mechanical

Engine Options:

2 Engines VOLVO D3 150HP
2 folding propellers for VOLVO 110HP
2 folding propellers for VOLVO 150HP
VOLVO engine throttle - chart table
Bow Thruster
24V Gasoil Transfer Pump

Additional Information

Safety Options:

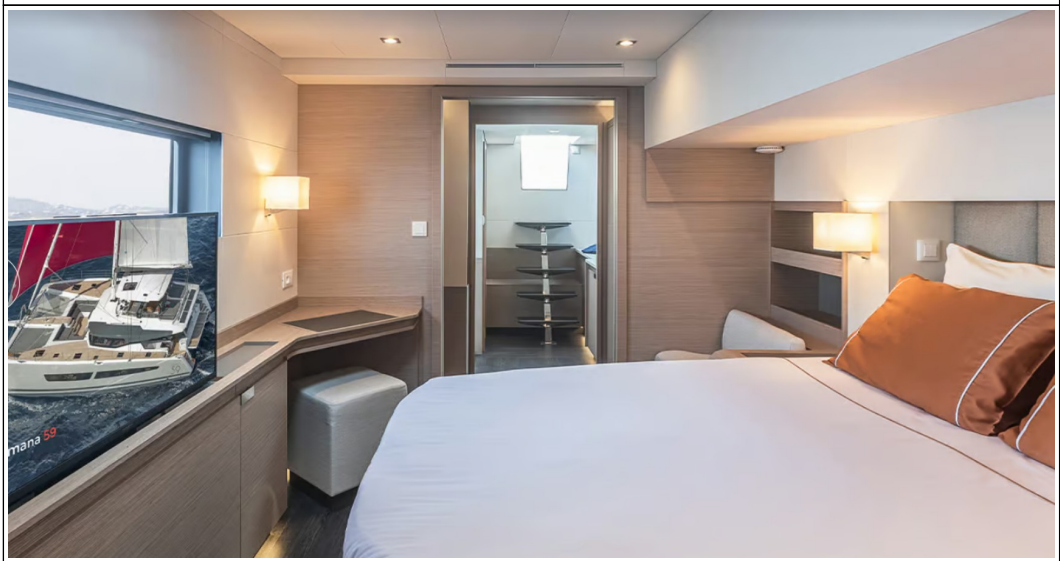
Fog horn - 2 control stations
Safety equipment without liferaft
Ø 14 mm chain + 40 kg anchor
MP6 container liferaft
MP8 container liferaft
MP10 container liferaft

Image Gallery

















Disclaimer

The Company offers the details of this vessel in good faith but cannot guarantee or warrant the accuracy of this information nor warrant the condition of the vessel. A buyer should instruct his agents, or his surveyors to investigate such details as the buyer desired validated. This vessel is offered subject to prior sale, price change, or withdrawal without notice. Photos may not properly reflect the current condition of the actual vessel offered for sale. In some cases stock photographs may have been used.

Mechanical Disclaimer

Engine and generator hours are as of the date of the original listing and are a representation of what the listing broker is told by the owner and/or actual reading of the engine hour meters. The broker cannot guarantee the true hours. It is the responsibility of the purchaser and/or his agent to verify engine hours, warranties implied or otherwise and major overhauls as well as all other representations noted on the listing.

Dinghy Disclaimer

All dinghies are considered separate vessels and should have separate titles and documents. There is no guarantee as to the title of the dinghy on this vessel so Buyer accepts that while he may receive the dinghy included in the transaction, he may not receive the proper title to it.

