

2015 Sunreef 74 OBSESSION



## Basic Vessel Summary

<b>Manufacturer:</b>	SUNREEF
<b>Model:</b>	Sunreef 74
<b>Model Year:</b>	2015
<b>Year Built:</b>	2015
<b>Type of Yacht:</b>	Sail
<b>Price:</b>	\$2,997,000
<b>Condition:</b>	Used
<b>Status:</b>	Sold
<b>Location</b>	Fort Lauderdale Florida (FL)
<b>Duties:</b>	NOT FOR SALE IN US WATER TO USA CITIZENS OR RESIDENTS
<b>Manuf. Length:</b>	74' 0" ( 22.56 m)
<b>Maximum Draft:</b>	7' ( 2.13 m)
<b>Beam:</b>	34' ( 10.36 m)
<b>LWL:</b>	74' ( 22.56 m)
<b>Mast Height Clearance:</b>	130' ( 39.62 m)
<b>No. of Cabins:</b>	6
<b>No. of Heads:</b>	6
<b>Fuel Capacity:</b>	975 g
<b>Water Capacity:</b>	400 g
<b>Holding tank:</b>	2
<b>Weight - Displacement:</b>	65 ton (130000 lb)
<b>Hull Material:</b>	Composite
<b>Hull Configuration:</b>	Catamaran
<b>Engine Manufacturer</b>	Yanmar
<b>Engine Model</b>	4LHA-STP

<b>Engine Year</b>	2015
<b>Engine Horsepower</b>	240
<b>Engine Hours (Port)</b>	2000
<b>Engine Hours (Starboard)</b>	2000
<b>Engine Type</b>	InBoard
<b>Engine Configuration</b>	Twin
<b>Engine Fuel Type</b>	Diesel
<b>Does the boat have a generator?</b>	Yes
<b>Generator Model</b>	Cummins Onan (2)
<b>Generator Operating Hours</b>	Port 3052 Starboard 2868
<b>Generator Horsepower</b>	39
<b>Does a dinghy come with the boat?</b>	No

## Full Specification

### Layout & Accommodations

Spacious main salon with helm station, with helm seat Navylec, Raymarine chart plotter and instruments

U shaped seating on starboard, with L shaped seating on the port, with moveable pouf seats in a mushroom palette with pops of color cushions. White Alcantara on the ceiling and removable wall panels for access to equipment tucked in behind. Raised Daybed, with built-in neck rolls. Electric pedestal controls for expandable dining table, convertible to 2 coffee tables, bar sink with Corian countertop, wine fridge, bar fridge, ice maker, ample storage, drop-down tv, Bose stereo with surround sound. Electric blinds. LED recessed lighting with controllers.

Owners version with luxurious Master king cabin and dressing area, with ample hanging, cupboards, drawers. desk and seat, lighting around mirror, underbed, reading lights, overhead lights, en-suite booth room with electric flush head, double sink, walk-in shower with rain shower and handheld showerhead

3 Guest Queen cabins with ensuite electric flush heads, separate showers, large hanging lockers, with shelves, dresser with 3 large drawers, under bed drawers and storage.

Individual AC control and TV in each cabin. Electric blinds.

2 Crew Cabins with electric flush heads, showers, storage, AC

Washer and dryer

Smoke/carbon monoxide alarms

### Galley

Custom designed galley featuring Corian countertops, for easy plating for 8. Miele Induction stove/oven, with exhaust hood with light, side by side Lieberman fridges with locks, 3 Vitrofrigo

freezer drawers, 2 Fisher & Paykel dishwasher drawers, microwave, double sink, ample storage, and drawers, all galley ware included

Wing door that pops up, with stairs leading directly to cockpit, with pass-through hatch, also stairs that lead to the main salon, opening port, overhead hatch with sunshade

Smoke alarm

## Deck & Equipment

Large cockpit with dining table seats 10 with aluminum and canvas deck chairs

2 large lounge beds, bar sink, 3 Vitro Frigo fridge drawers, one with Icemaker

Underfloor storage, under-seat storage, overhead storage

Starry night ceiling

Blue footlights at aft boarding stairs and cockpit

Rainshower,

Swim boarding ladder-detachable

Emergency swim ladder, retractable

Hydraulic Passerelle

Carbon boarding Gangway

Mast steps

Teak steps from forwarding deck to flybridge

Teak steps on aft transom skirts

Tenderlift electric dinghy hoists

Flybridge with sunbeds, electric table adjustment, table seats 12, or drops to make giant sunbed

under bench storage

2 person helm seat

2 Vitrofrigo fridges, one with Icemaker

Helm features Sailwizz with mast load sensor, boom overload sail release, emergency stop, and all controls

2x Bowthrusters joysticks

VHF, Adventix throttles, 2 Autohelm controls

Raymarine chart plotter with separate wind, speed, depth readouts

2x Harken Electric winches, with foot buttons

2x reversing mainsheet, topping lift/preventer winches

2x capstan winches aft

Carbon mast with Spectra spinnaker/code 0 halyard, jib, staysail, main halyards, man aloft halyard

Blue LED mast lights, high powered searchlight

Petit Jean Carbon furling Park Avenue boom

Hydraulic code 0 Reckmann Furler

Hydraulic self-tacking Jib Reckmann Furler

Spinnaker and gear

large garage for storage of sails, equipment, water toys

2 x Robbie Naish SUP's

2 x Collapsible Kayaks

8 blow up fenders w covers

Snorkel gear for 8

Dive tanks and gear for 2

2 X Quick windlasses

2 x Rocna anchors 90KG, 70KG

Anchor up/down remote

Anchor washdown

Hydraulic power pack with overrides

Propane BBQ with cover 2 x propane tanks

Stainless Steel 1 meter high railings, aft gates, handrails

Integrated dolphin seats on bow rails

Stainless Steel cleats

Flush hatches

Ferrari Nets

2 x aft capstans

Cockpit enclosures

Cockpit speakers

Flybridge speakers

Wifi with SIM card

2 x Liferafts in SS rack

EPIRB

Handheld VHF

12 life jackets

## Electronics & Navigation

Helm features Sailwizz with mast load sensor, automatic boom release, in-boom furling, boom vang and all winch controls, traveler operated by one finger

2 Bow thrusters Joysticks

2 Yanmar engine control panels

Advantix throttles

2 Autohelm controls, one as a backup, with Smart remote

Sat phone Cobham Sailor 250 Fleet broadband

Icon VHF Icon Handheld VHF

Foghorn

Searchlight on the mast with a controller

Raymarine E125 15.5" chart plotter with separate wind, speed, depth readouts

MOB with 6 fobs  
Fuel consumption readout  
Chain counter with anchor chain up/down capability  
Light control panel  
Bilge alarm red light

Main salon helm station includes  
Helm seat with fingertip access to Raymarine keypad  
Navylec Dometic for all boat systems monitor and control  
Raymarine E125 15.5" chart plotter  
Raymarine wind, speed depth readout  
2 Yanmar engine control panels  
2 Autohelm control heads, Smart Autohelm remote  
Yacht Controller, remote engine/steering capability Genset start/stop and readout  
6 high output bilge pump switches  
Bilge high water alarm  
Intrusion alarm  
Smoke alarm  
Satellite tracking with intrusion alarm  
Sea Recovery Watermaker control panel  
Air Conditioning control panel  
2 Raymarine cameras in the cockpit  
2 Raymarine cameras in engine rooms  
Wifi router

## Electrical, Power & Plumbing

### Electrical

Frequency converter ASEA 30 – Input 208-240VAC 50/60Hz/Single Phase  
Capable of connecting to Shore power worldwide  
12 200 Amp batteries  
3 Victron chargers 24 V  
1 Victron charger/ Inverter 24V/5000 watt  
Emergency power shut down  
Shore adapters and shore power cables  
2 engine start batteries  
2 generator start batteries  
2 bow thruster batteries

### Plumbing

6 High output bilge pumps  
2 engine driven bilge pumps

2 manual bilge pumps  
2 engine driven firehose pumps  
2 pressurized water pumps  
2 black water pumps & holding tanks  
2 water heaters 20 US Gallons  
2 water transfer pumps  
6 24V electric flush heads  
Water tank capacity 400 US Gallons

## Engine & Mechanical

2 240 hp Yanmars with electric fire suppression, 2000 hours  
Mastervolt High output Alternators  
Start batteries  
2 29 kW Cummins Onan Generators & start batteries; Port 3052 hours, Starboard 2868 hours  
2 Sea Recovery Aquamatic Watermakers 58/gal/hr/ea with a remote screen at the helm  
4 AC chillers and pumps  
Diesel capacity 1000 US Gallons

## Sails & Rigging

North Carbon 3Di full battened Main with 2-1 halyard  
North Carbon 3Di self-tacking Jib with a dedicated halyard, new February 2020  
North Carbon Code 0 with shared 2-1 halyard  
Spinnaker with shared 2-1 halyard  
Orange storm staysail with halyard  
Spectra low stretch halyards and sheets  
Blocks and jammers  
Reckmann Furlers

## Additional Information

\*\*\*DINGHY AVAILABLE SEPERATELY (SEE BROKER FOR DETAILS)\*\*\*

Upgrade for semi-custom  
Yanmar - 4LHA-STP - 240 HP  
Additional generator 29kW Onan Cummins  
Maintenance of engines and gensets done per the manuals  
Safety gear inspections, newly reissued certifications 2019  
Sails newly inspected and sun protection replaced 2019  
New survey completed April 2019, no faults or no recommended repairs

Sails Upgraded from standard Hydranet

North Sails 3Di Carbon Main  
North Sails 3Di Carbon Jib  
North Sails Carbon Code 0  
North Sails Spinnaker  
Code 0 hydraulic Reckmann Furler  
Jib hydraulic Reckmann Furler  
North Spinnaker.  
Complete gear for spinnaker  
Petit Jean Park Avenue boom

#### General & Comfort on Board

Composite hard top bimini on the flybridge with integrated lights.

#### Mechanics

2 electric bow thrusters  
Two extra engine panels internal nav station

#### Navigation & Electronics

Fishfinder  
Yacht controller (remote controller for engines, windlass and bow thrusters).  
Sailwizz Sails control panel.  
Mainsail auto-release system  
Mast foot sensor  
Radar reflector upgrade to model Echomax  
spare parts - set  
Charts and Raymarine chart chips  
Spare autopilot with installation  
Smart controller (wireless autopilot controller with instrument repeater).  
A satellite tracking system with anti-intrusion alarm (excluding fees).  
2 pcs Raymarine Cameras with color and night vision in the cockpit.  
2 pcs Raymarine Cameras with color and night vision (one per engine room)  
2 Additional Raymarine monitor 12" in cabins.  
Transducers on both hulls  
Carbon steering wheel upgrade from the aluminum  
Cobham SAILOR 250 FleetBroadband System  
High intensity, on mast spot/searchlight with a controller on the flybridge  
Small winches – upgrade to reversible  
Powerpack, labor, and project for furlers and winches changes

#### Plumbing

Additional watermaker of output 220L(58gal)/h with a remote touch screen on the helm

station (230V AC) - Sea Recovery Aquamatic 1400-2

### Safety Equipment

Man Over Board system based on AIS - Easy Rescue System lifetag - 6 Lifetag

### Deck

Deck railings modification includes aft platforms (not between pulpits) The main deck is surrounded with a top rigid SS bar and 2 lower lifelines, Height: 1.000 mm. The flybridge deck is surrounded with a top rigid SS bar, flybridge stairs with SS handrails and poles.

Low profile rails for all passageways

Additional railings and an additional lifeline for railings and gates around deck

SS cleats.

Aft Teak steps on both skirts

Director chairs ( aluminum/white canvas)

Shore Power adaptors array

Gas BBQ 12"x18" + 5,5"x18" + mounting + cover CATALINA A10-1218L.

Additional serving window in galley hatch

Flybridge teak and stainless steps, front access.

### Tender

WILLIAMS JET D505.

Electric Diesel Filling pump, electric air-fill

LED automatic lights in Master cabinets.

Electric blinds, upgrade from manual.

Cockpit enclosure with windows

Set of covers for helm station, steering wheels, and winches.

Table covers, dinghy cover, cushion covers

Opening window in portlights – 4 pcs.

Bilge pumps upgrade to larger capacity

Image Gallery







































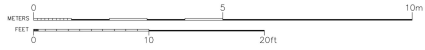
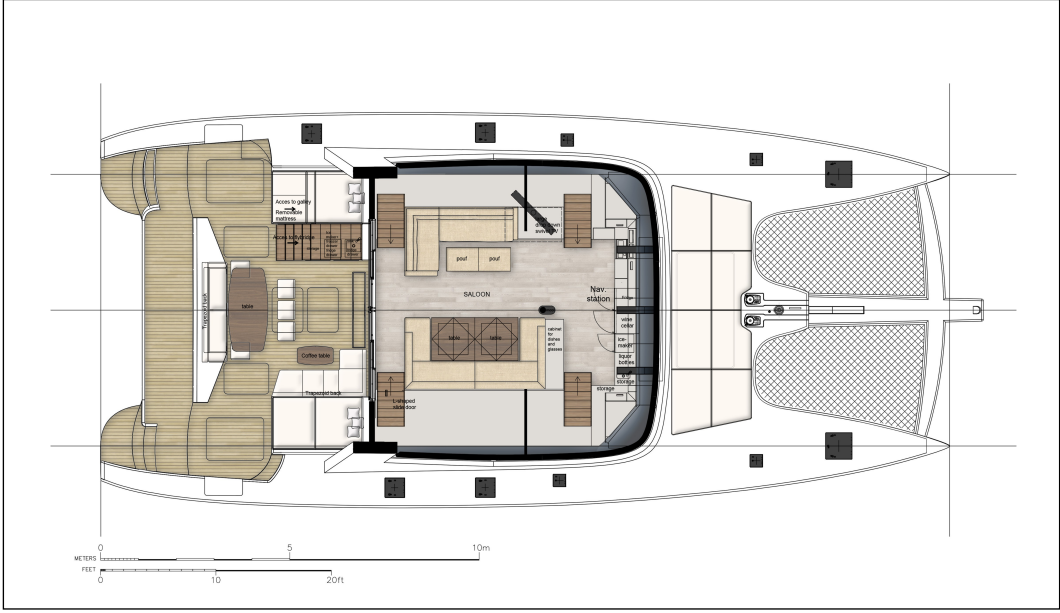
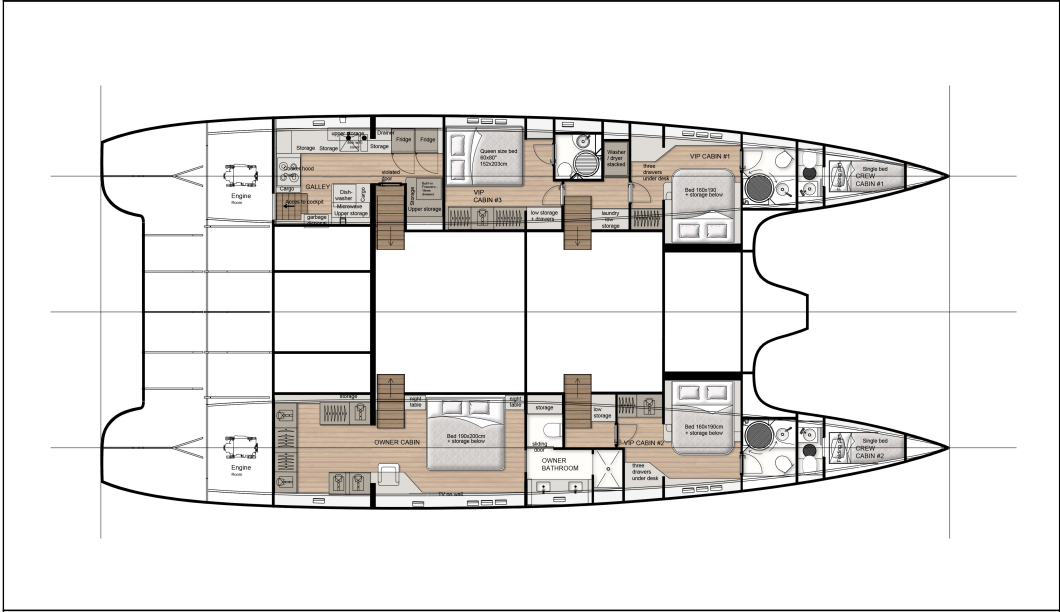
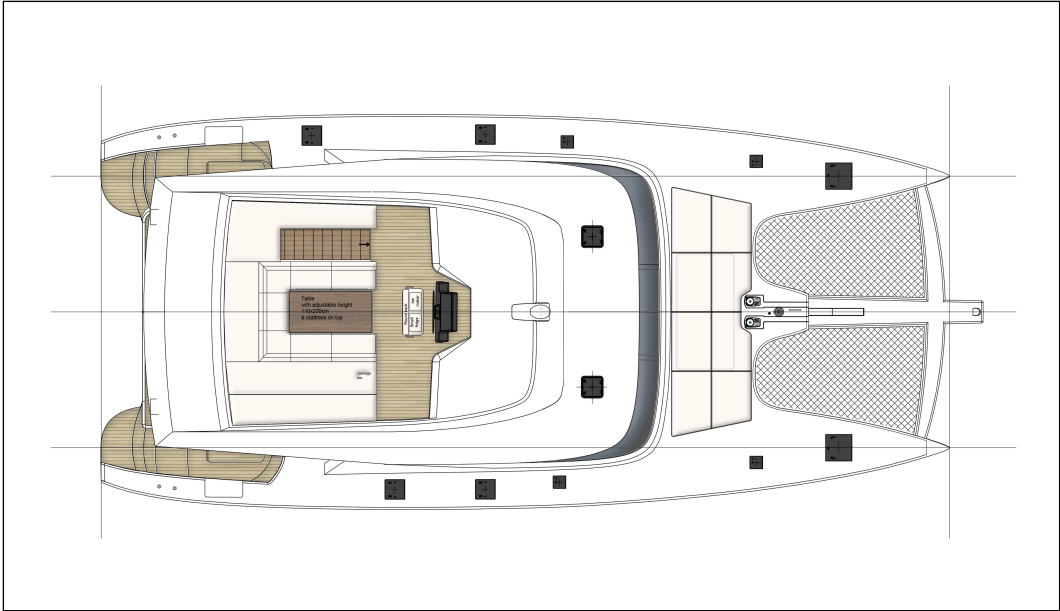


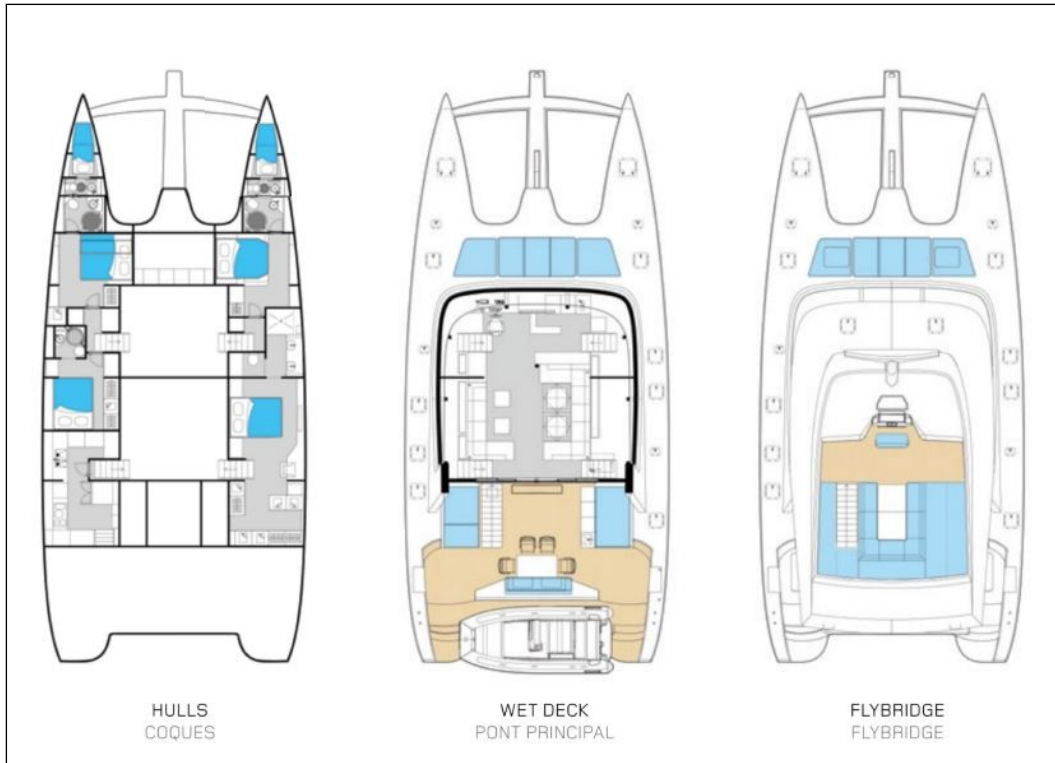












### **Disclaimer**

The Company offers the details of this vessel in good faith but cannot guarantee or warrant the accuracy of this information nor warrant the condition of the vessel. A buyer should instruct his agents, or his surveyors to investigate such details as the buyer desired validated. This vessel is offered subject to prior sale, price change, or withdrawal without notice. Photos may not properly reflect the current condition of the actual vessel offered for sale. In some cases stock photographs may have been used.

THIS VESSEL IS NOT FOR SALE IN US WATER TO USA CITIZENS OR RESIDENTS.

### **Mechanical Disclaimer**

Engine and generator hours are as of the date of the original listing and are a representation of what the listing broker is told by the owner and/or actual reading of the engine hour meters. The broker cannot guarantee the true hours. It is the responsibility of the purchaser and/or his agent to verify engine hours, warranties implied or otherwise and major overhauls as well as all other representations noted on the listing.

### **Dinghy Disclaimer**

All dinghies are considered separate vessels and should have separate titles and documents. There is no guarantee as to the title of the dinghy on this vessel so Buyer accepts that while he may receive the dinghy included in the transaction, he may not receive the proper title to it.