

2012 Isara 50 DE MOOR DAUNTLESS



Basic Vessel Summary

Manufacturer:	TAYANA
Model:	Isara 50
Model Year:	2012
Year Built:	2011
Type of Yacht:	Sail
Price:	\$649,000
Condition:	Used
Status:	Sold
Location	Fort Lauderdale Florida (FL)
Manuf. Length:	48' 10" (14.88 m)
Maximum Draft:	4' 5" (1.35 m)
Minimum Draft:	4' 5" (1.35 m)
Beam:	24' 11" (7.59 m)
LWL:	43' 7" (13.28 m)
Mast Height Clearance:	81' 11" (24.97 m)
No. of Cabins:	4
Fuel Capacity:	255 g
Water Capacity:	638 g
Holding tank:	2
Weight - Displacement:	18 ton (36000 lb)
Hull Material:	Fiberglass Reinforced Plastic- FRP
Hull Configuration:	Catamaran
Engine Manufacturer	Yanmar
Engine Model	4JH4-TE
Engine Year	2008

Engine Horsepower	75
Engine Hours (Port)	1055
Engine Hours (Starboard)	1038
Engine Type	InBoard
Engine Configuration	Twin
Engine Fuel Type	Diesel
Does the boat have a generator?	Yes
Generator Model	Onan
Generator Horsepower	13 kW
Does a dinghy come with the boat?	No

Full Specification

Layout & Accommodations

Stepping onboard, immediately the quality of the build will strike you, and not only that, you will have to remind yourself, that you are on a 50ft catamaran and not a much larger vessel. The high quality stainless steel on board is like a seamless piece of art! From the boat's large flybridge you can see all four corners of the boat for ease of berthing in any marina and easy access to controls and lines. The boat can be helmed from the flybridge or from the secondary helm station in the saloon with clear all-round visibility easily handled by a husband and wife long-distance cruising.

The bridge deck accommodation is naturally the most striking aspect of this boat – it is around one third larger than that of other catamarans of a similar length. A large and superbly Stepping onboard, immediately the quality of the build will strike you, and not only that, you will have to remind yourself, that you are on a 50ft catamaran and not a much larger vessel. The high quality stainless steel on board is like a seamless piece of art! From the boat's large flybridge you can see all four corners of the boat for ease of berthing in any marina and easy access to controls and lines. The boat can be helmed from the flybridge or from the secondary helm station in the saloon with clear all-round visibility easily handled by a husband and wife long-distance cruising.

The bridge deck accommodation is naturally the most striking aspect of this boat – it is around one third larger than that of other catamarans of a similar length. A large and superbly is fantastic with everything needed to make meal preparation a pleasure – a large stainless steel refrigerator, double sink, four-burner electric stove, convection oven, dishwasher, curved bar, and serving area.

All cabins are luxuriously appointed with an abundance of natural light, full-length hanging locker, plenty of storage space, hidden TVs and individual air conditioning controls. Each cabin has an extra large en-suite bathroom with vanity, a separate shower, and an electric

quiet flush toilet.

The secret behind Isara Yachts spacious interior is the unique Carbon Arch that allows the mast

load to be spread evenly from the mast step through the coach roof which allows saloon to be pushed 6 ft further forward giving amazing extra living space in the saloon providing this incredible extra space, in comparison to much larger catamarans.

The Saloon

6/7 seat sofa

Folding coffee/dining table

2 x single occasional chairs

Integral LED lighting

Underfloor LED courtesy lighting

Wet locker for storage of foul weather gear

Master distribution board for all systems

Galley

Miele oven & hob and extractor

Dishwasher

Stainless steel fridges

Double sink unit with mixer taps

Dry storage area

Large bin space

Curved Bar/serving area

Deck & Equipment

As you'd expect of a boat of this nature there's acres of lounging space on deck, as well as a number of separate areas for socializing. This includes the main aft cockpit, from where twin curved staircases lead to the crew cockpit on the flybridge – it is from here that the yacht and sails are controlled.

De Moor Dauntless' many features include two helm stations, full Raymarine electronics including chart plotter/GPS, wind instruments and radar, fully battened mainsail, 24v furling genoa, electric winches, folding props, inverter, and deck washdown pump. The spacious flybridge is accessed by twin curved staircases and offers comfortable cushioned seating for six. A lounge area forward of the flybridge is the perfect place for those wishing to enjoy the sun or relax in one of the teak seats at the bow and enjoy the breeze. The cockpit is equipped with an electric Teppanyaki style grill, refrigerator. The large covered cockpit is the ideal place for relaxing, entertaining or enjoying a meal with friends and family. For easy access to the sea and dinghy, the wide swim platform has a boarding ladder at each hull.

Divers will appreciate the specially designed tank locker as well as the dive ladder. Tinted glass saloon windows not only look sexy they stay looking great! The Tinted Glass will keep your boat cool and looking good for its whole lifetime. Glass is less prone to scratching compared to Perspex or polycarbonate most commonly used. Built using only the best materials gives peace of mind. Vinylester Resin Construction is more expensive to use than Polyester Resin in boat building which most of the production builders use, but it reduces the incidence of osmosis, keeps a shine better and is stronger. A Wet Locker! what could be more useful than a wet locker to store gear rather than dripping all over the inside of your boat. It is great for storing safety equipment and life jackets close to hand.

Construction: E-Glass/Carbon, foam-cored infusion using Vinylester resin

Flybridge

Large sunbathing area and seating for guests

Contained seating for 6 pax, including helmsman

Central helming position aft

All sail controls leading to the flybridge

Bimini

Cockpit

Teppanyaki electric bbq griddle

Sink

Fridge

Dive tank storage locker

Davits

Underwater hull lights – New 2020

Electric Windlass

Swim Ladder

Fenders and warps

Teak cockpit table

Deck shower

Escape hatches in hulls

Antifouling - Nov 2020

Hull buff & wax – Nov 2020

Glass ports and windows

[Electronics & Navigation](#)

Raymarine wind speed/depth/log
Raymarine combined chart plotter / radar / GPS x 2
Raymarine Autohelm at the helm on flybridge and navigation station
Raymarine Radar
VHF DSC & second handset at helm
Internal helm station with flybywire throttles steering

Electrical, Power & Plumbing

Well laid out and easy to access, the systems were designed by true boaters with an eye on the long-term.

13kva Onan generator
Plumbed for watermaker
Deck wash pump
220v Shore power ring main
Double sockets in each cabin, galley, saloon, chart table
Charger and Inverter
30 amp and 50 amp shore power sockets
Quiet flush electric toilets with holding tanks
Hot & Cold pressurized water system with calorifier
Full air conditioning throughout the boat
Lighting throughout
Teak floor in the cockpit, transom steps & flybridge floor
Hatches - New 2020
Blinds & mosquito nets on all cabins

Engine & Mechanical

Engines Mounted Amidships For better weight distribution important on a catamaran in sealed and insulated engine compartments easily disassembled for easy access for ease of maintenance keeping sealed to keep smells and noise out of the boat. Not under the beds as with most models allowing the beds to be lower for ease of getting in and out of bed.

2 x 3-blade Varifold folding propellers – serviced Nov 2020
2 x Engines 75hp Yanmar with sail drives
Metal Keel Shoes

Sails & Rigging

Painted aluminum mast with flag halyards, deck lights, LED Navigation lights

Fully battened square top mainsail in Dacron by Taskers

Roller furling genoa (electric)

Genoa by Taskers in Dacron

Lazy bag

Spinnaker

Sail bag cover

Harken deck gear

New running rigging 2020

Additional Information

The equipment list is commendably comprehensive, including twin Yanmar 75hp diesel engines,

13KW diesel generator, and air conditioning. The galley is fitted with integral appliances including two fridges, cockpit fridge, and an electric hob. There's even a fitted electric barbeque!

The Tayana shipyard, builders of the Isara have been established for over 50 years and have a well known and enviable reputation of building traditional high-quality yachts, have the experience and the unmatched skills to build this superb catamaran.

Builder: Isara Yachts

Designer: Christian Stimson

Architect: JJ Coste

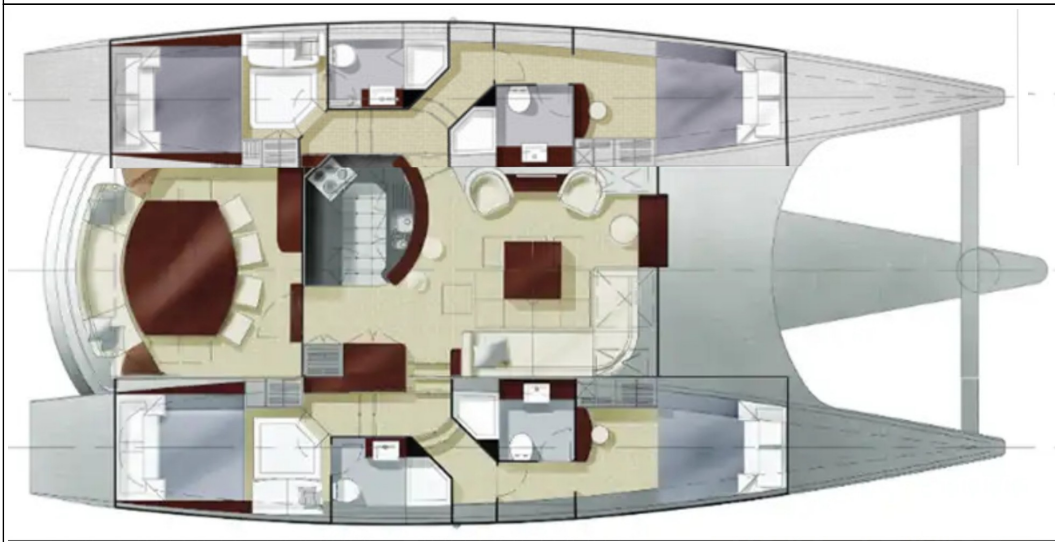
Certification: CE Cat A (Ocean)

Image Gallery















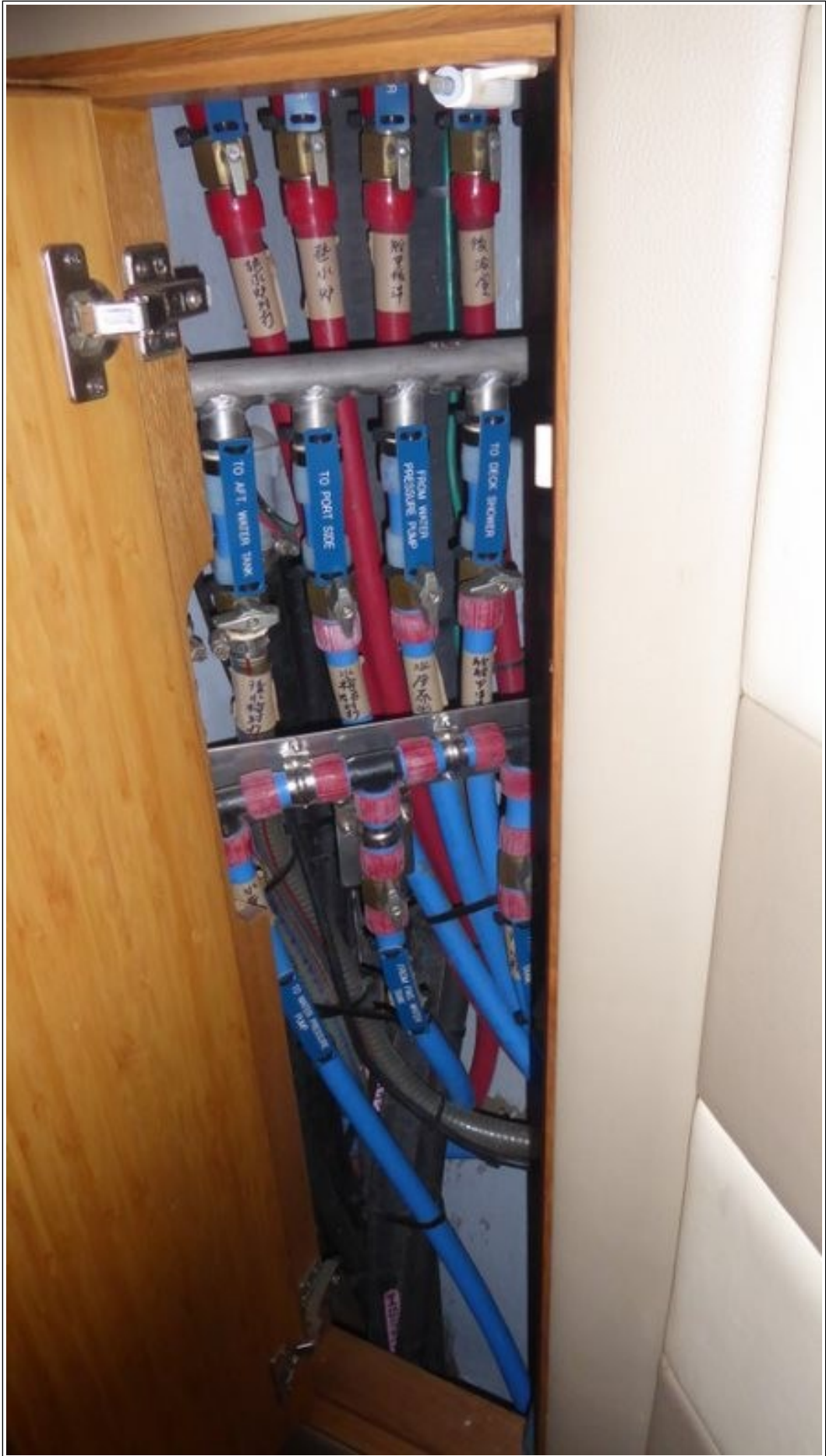
















Disclaimer

The Company offers the details of this vessel in good faith but cannot guarantee or warrant the accuracy of this information nor warrant the condition of the vessel. A buyer should instruct his agents, or his surveyors to investigate such details as the buyer desired validated. This vessel is offered subject to prior sale, price change, or withdrawal without notice. Photos may not properly reflect the current condition of the actual vessel offered for sale. In some cases stock photographs may have been used.

Mechanical Disclaimer

Engine and generator hours are as of the date of the original listing and are a representation of what the listing broker is told by the owner and/or actual reading of the engine hour meters. The broker cannot guarantee the true hours. It is the responsibility of the purchaser and/or his agent to verify engine hours, warranties implied or otherwise and major overhauls as well as all other representations noted on the listing.

Dinghy Disclaimer

All dinghies are considered separate vessels and should have separate titles and documents. There is no guarantee as to the title of the dinghy on this vessel so Buyer accepts that while he may receive the dinghy included in the transaction, he may not receive the proper title to it.