

## 2002 Admiral 38 SLEEK KEELS



### Basic Vessel Summary

<b>Manufacturer:</b>	ADMIRAL
<b>Model:</b>	Admiral 38
<b>Model Year:</b>	2002
<b>Year Built:</b>	2002
<b>Type of Yacht:</b>	Sail
<b>Price:</b>	\$145,000
<b>Condition:</b>	Used
<b>Status:</b>	Sold
<b>Location</b>	Fort Lauderdale Florida (FL)
<b>Duties:</b>	NOT FOR SALE IN US WATER TO USA CITIZENS OR RESIDENTS
<b>Manuf. Length:</b>	38' ( 11.58 m)
<b>Maximum Draft:</b>	3' 06" ( 1.07 m)
<b>Minimum Draft:</b>	3' 06" ( 1.07 m)
<b>Beam:</b>	23' 01" ( 7.04 m)

<b>LWL:</b>	36' 0" ( 10.97 m)
<b>Mast Height Clearance:</b>	59' 0" ( 17.98 m)
<b>No. of Cabins:</b>	4
<b>No. of Heads:</b>	2
<b>Fuel Capacity:</b>	119 g
<b>Water Capacity:</b>	130 g
<b>Cruise speed:</b>	7 knots
<b>Max speed:</b>	8 Knots
<b>Weight - Displacement:</b>	7.716 ton (15432 lb)
<b>Hull Material:</b>	Fiberglass Reinforced Plastic- FRP
<b>Hull Configuration:</b>	Catamaran
<b>Engine Manufacturer</b>	Yanmar
<b>Engine Model</b>	3GM30
<b>Engine Horsepower</b>	54
<b>Engine Hours (Port)</b>	2859
<b>Engine Configuration</b>	Dual
<b>Engine Fuel Type</b>	Diesel
<b>Does a dinghy come with the boat?</b>	Yes
<b>Dinghy Model</b>	Walker Bay
<b>Dinghy Outboard Horsepower</b>	10
<b>Dinghy Outboard Year</b>	2007

### Boat Description:

4 Cabin, 2 Head Charter version. This Admiral 38 catamaran for sale, SLEEK KEELS, has been thoroughly enjoyed by her current owner. She has been given several upgrades and rigorous maintenance, and this robust offshore cruiser represents herself beautifully. This is a unique opportunity to get a well cared for, ready-to-go liveaboard capable circumnavigator. Price is firm and Boat is being sold as-is with seller disclosure of known defects.

## Full Specification

### Layout & Accommodations

SLEEK KEELS has 2 aft cabins; they each have 2 cabinets, a shelf and storage space under the queen bed and the seat. The master suite is located on the port side. The 2 forward cabins have a double bed, one cabinet and a "bin" in the forepeak. The cabins also have hanging lockers and there are two additional hanging lockers in each hull. There is high quality cherry wood finishes on the hatch trims, nav station, cabin doors and galley's cupboards. There is also a beautiful cherrywood table in the saloon and a table in the cockpit.

There are 2 heads: each has a stand-up shower, one has a JABSCO toilet and the other a

LECTRA SAN decomposition system, cabinet and high quality stainless steel taps (replaced in 2011).

The aft cabins' engines are sound proofed.

New Salon cushions

Harry's Carpet: New 2011 (Carpet throughout)

## Galley

12V energy-efficient/under-counter compact fridge a Large freezer/chiller 12V

SIMEV Four burner propane stove with gas oven

12 Gallon hot water tank with heat exchanger

## Deck & Equipment

Canvas bimini full enclosure (New in 2011)

Cockpit cushions

Swim ladders

Sunrise Multinets: New 2011 (trampoline)

Stainless steel stern Dinghy davits

No dinghy or outboard

Propane Barbeque grill

Canvas bimini full enclosure (New in 2011), upgraded in 2014 with additional glass (transparent plastic) for better 360 degree visibility with the cockpit fully enclosed.

Bimini has hard walking section for tending boom

New bottom paint and hull wax Sept. 2016

Marine canvas and cockpit cushions: New 2011

Added spot light at starboard bow with cockpit control

Added Horn

Winslow Type A6 manual

life raft last serviced 2011 - included as is.

5 x Anderson winches

45 lbs CQR anchor with 250 feet of chain (painted in 20 foot increments)

45 lbs CQR anchor with 90 feet chain.

LOFRANS Cayman Electric Windlass

Ground tackle: CQR 45 on bow roller & CQR 45 in locker

Anchor windlass: LOFRANS CAYMAN electric with bow foot control

Safety: flares, horn, bell, life jackets, life rings

5 additional fuel containers (~25 Galons, ~100 L)

10 additional water containers. (~50 Galons, ~200 L)

## Electronics & Navigation

Steering Gear: Mechanical single station wheel (Whitlock)

Full Raymarine interfaced instrument system including 48 mile radar, GPS, and autopilot, C-Map chips for Raytheon GPS in navigation station for Florida, Bahamas, Caribbean, South America, and Central America.

Compass: 6" PLASTIMO

Raytheon C120W 12.1" Multifunction Display with US coastal Charts and Sirius Weather with integrated network switch. GPS (New in 2011).

ST5000 Autopilot

Raymarine C-120 plotter/48m. radar

Raytheon RL-70 plotter/24m. radar

Icom M-710 SSB at nav station

ST60 Tridata

ST60 Windvane

JVC Surround Sound system with CD and MP3 player (Sirius compatible)

4 Speakers inside and out

ICOM #M710 SSB Radio

One ICOM VHF Radio and one Hand Held VHF Radio

Shakespeare TV antenna at mast top

9565 Iridium satellite phone full package with wifi router/modem and additional batteries, in pelican case

## Electrical, Power & Plumbing

LED lighting throughout (2014 upgrade)

110 Volt (2KW) Magnum True Sine Inverter 6 x 110 v sockets isolating transformer - 110v or 220v

Two x 130 watt Kyocera Solar panels

Numerous 12 v sockets

10 6 volt AGM batteries (New 2014)

Battery charger: 125 amp automatic

Shore power

Starting batter for each engine

1 x 150 amp alternator

2 x 55 amp alternator

6 SolarFlex 100 watt solar panels with solar snap canvas mounts = 1 X 300 watt array port, 1 X 300 watt array starboard (New 2014)

3 SBoost 3000i MPPT solar charge controls (New 2014)

3 Dual DC Disconnect & Breaker Panels – Solar in to controller, solar out to battery (New 2014)

Plumbed for watermaker  
Hot and cold fresh water transom shower  
Bilge pump: 4 Automatic, 1 Manual  
Heads: JABSCO manual seawater  
Plumbing fixtures : New 2011 (in heads)

## Engine & Mechanical

2 x Yanmar  
HP: 2x 27 hp  
Engine Model: 3GM30F SD-20 Sail drive  
Cruising Speed: 7 knots  
RMP: 3,600  
Fuel: 1 x 119 Gal Diesel  
Water: 1 x 130 Gal  
Holding: Lectrasan  
Freshwater cooling system  
2859 Engine hours

## Sails & Rigging

New Mack Pack - Main Sail Stack pack. Sail Cover (Jan 2016)  
New standing rigging (Jan 2016)  
Shamrock full-battened sail main with BAT CARS and 110 Genoa on roller-furler with blue sac cover.  
Full Spinnaker  
Brand new Parasailor from ISTECH - The Downwind Company complete with easy snuffer and sailbag (\$8000 value)  
Running rigging: Dacron  
Winches: 2 Anderson 40 s/tailing, 2 speed p/s coamings. 2 Anderson 28 s/tailing, 2 speed p/s mast  
Sail drive serviced Feb 2016  
New bottom paint Feb 2016

Image Gallery









































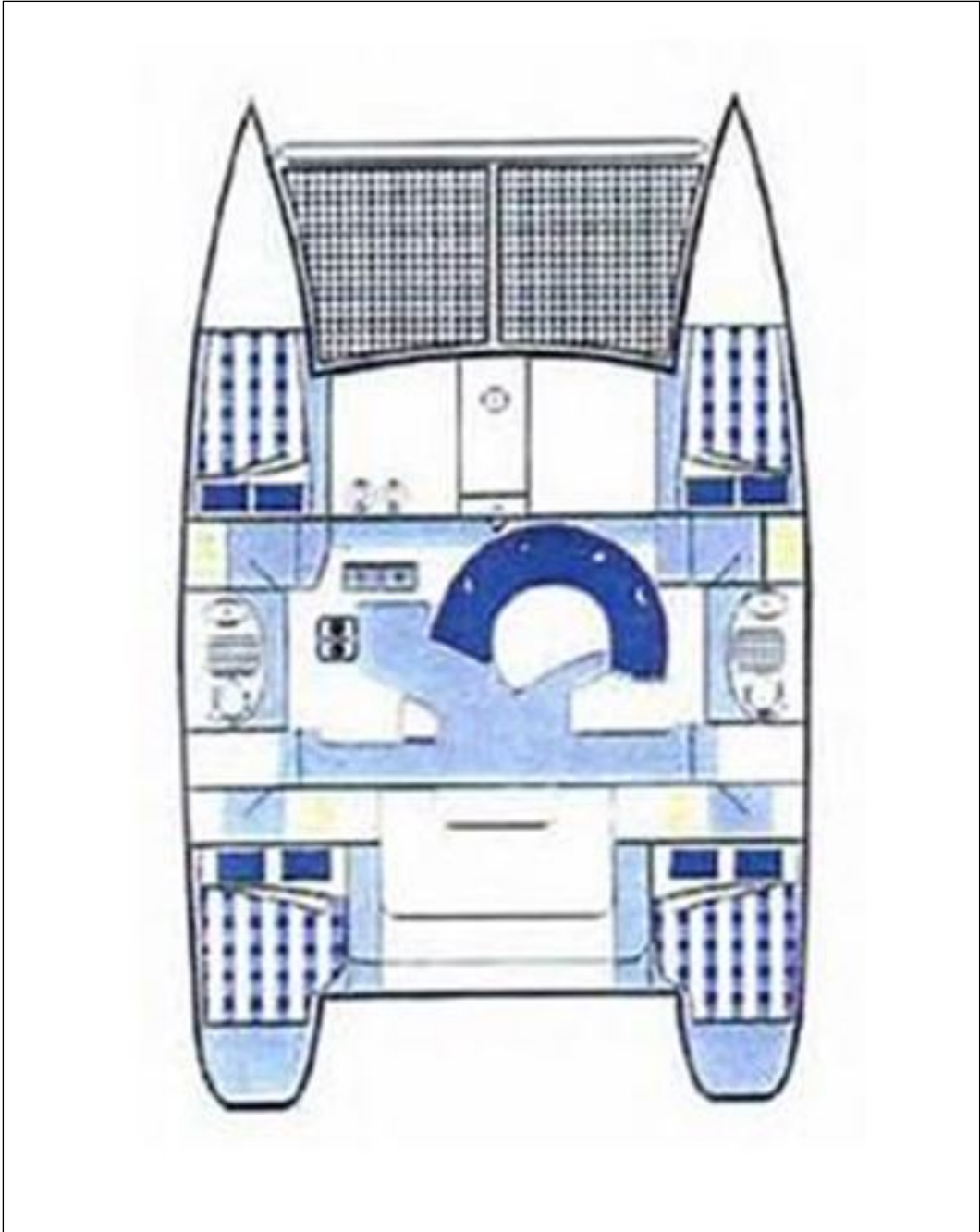
















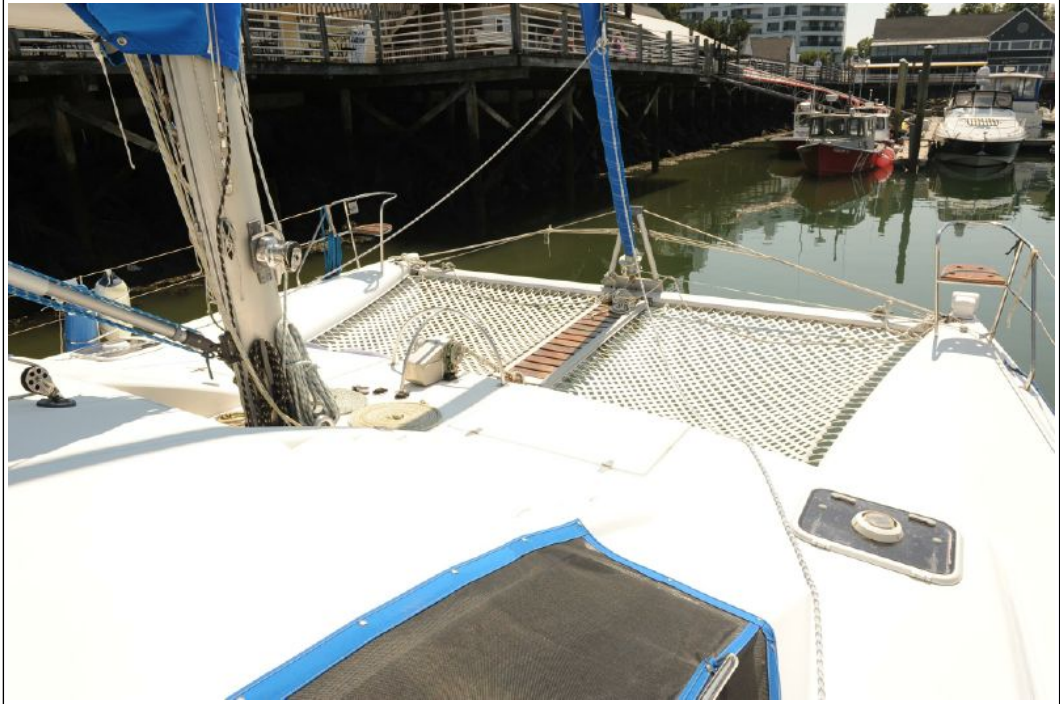






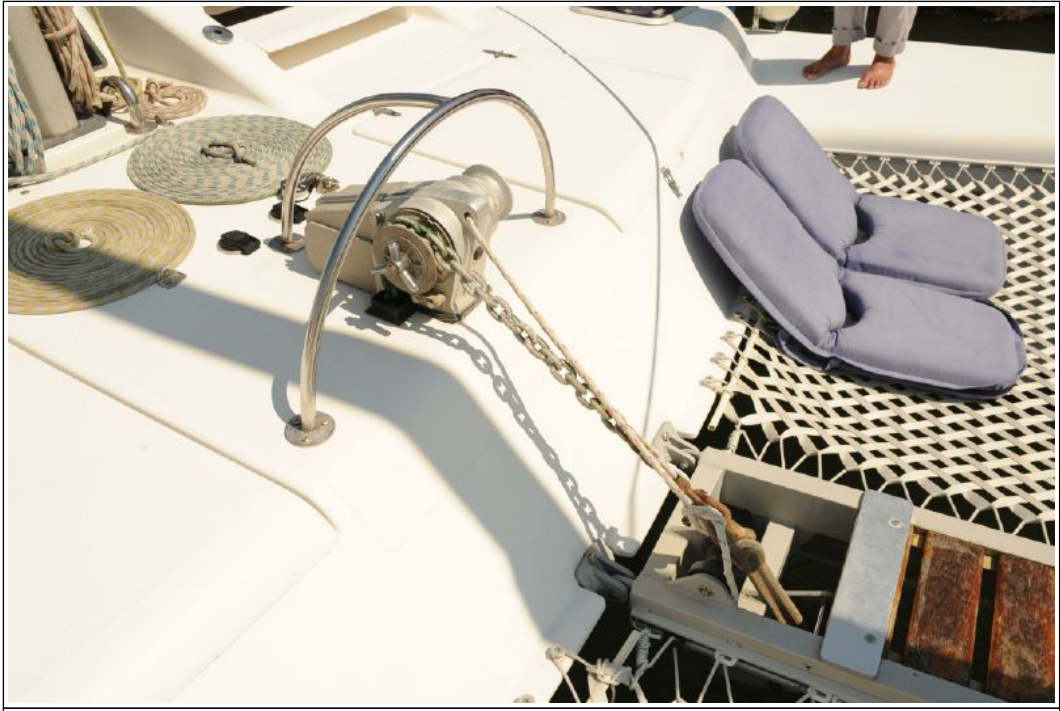
























**EMERGENCY RADIO CALL PROCEDURES**

1. MAKE SURE RADIO IS ON
2. SELECT CHANNEL 16
3. PRESS AND HOLD THE TRANSMIT BUTTON
4. CLEARLY SAY "MAYDAY" AND YOUR POSITION
5. ALSO SAY "HELP"
6. VESSEL NAME AND/OR DESCRIPTION
7. VESSEL OR ANCHOR LOCATION
8. NATURE OF EMERGENCY
9. NUMBER OF PEOPLE ON BOARD
10. HELLO AND TRANSMIT BUTTON
11. WAIT FOR 10 SECONDS, IF NO RESPONSE REPEAT "MAYDAY" CALLS

**SEE ALL PERSONS ON LIFE JACKET**

**16**  
VHF-FM

© 2008 Coast Guard. All rights reserved. No part of this publication may be reproduced without permission. U.S. Coast Guard will not be held responsible for errors or omissions. National Center for Public Safety, 225 West Washington Blvd., Alexandria, VA 22304. www.uscg.gov

**Need Help On The Water and On The Shore?**

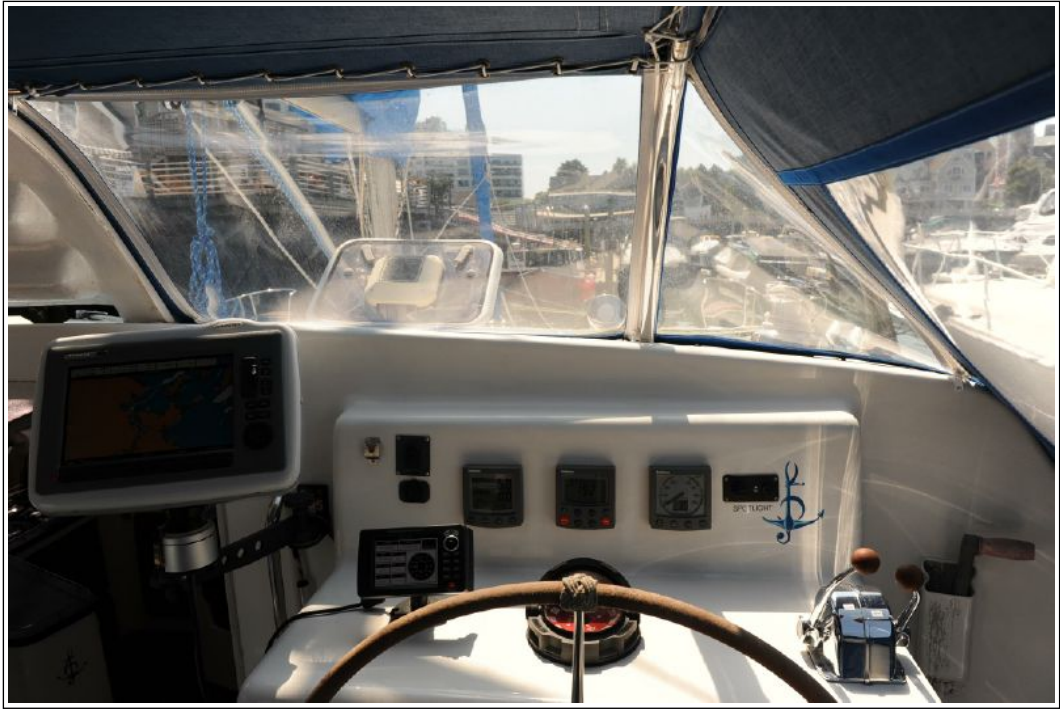
**BoatUS** 800-391-4869  
BoatUS  
VESSEL ASSIST On VHF 16

BoatUS is a member of the Coast Guard Auxiliary.











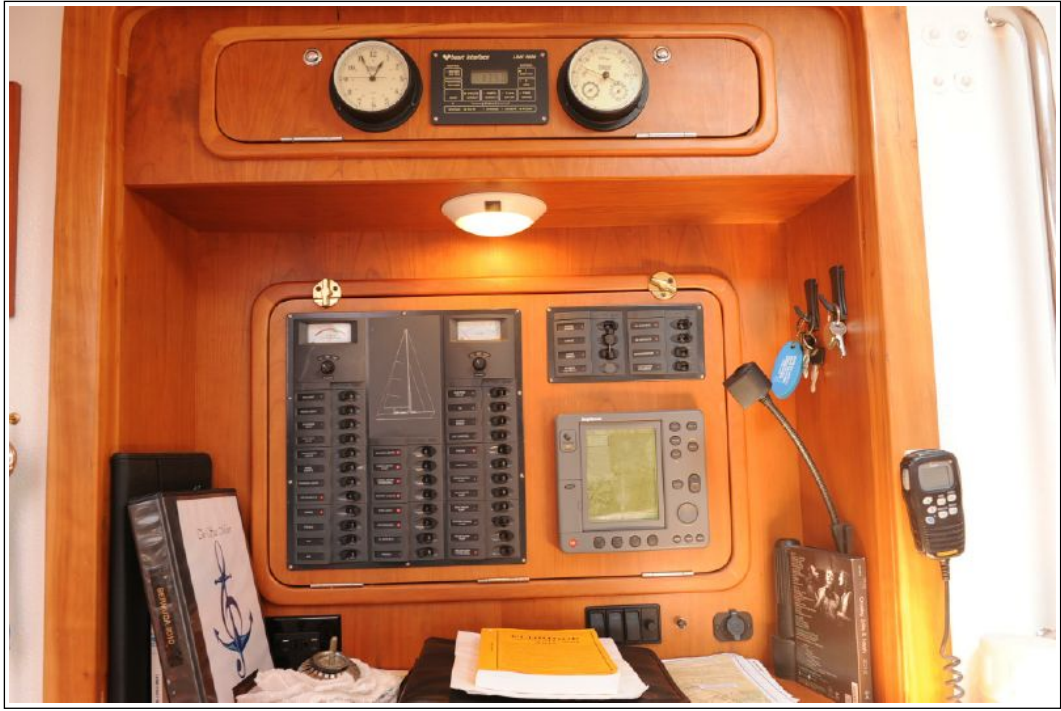


**16**  
**VHF-FM**  
**16**  
**VHF-FM**

**Essential Points**  
**INTERNATIONAL MARINE RADIO REGULATIONS**  
 1. MAKE SURE RADIO IS ON  
 2. SELECT CHANNEL 16  
 3. PRESHOLD THE TRANSMIT BUTTON  
 4. CLEARLY SPEAK  
 5. ALSO GIVE  
 6. YES/NO, NAME, ADDRESS OR SHIP/BOAT  
 7. POSITION AND/OR LOCATION  
 8. NATURE OF EMERGENCY  
 9. REMEMBER IF PEOPLE ON BOARD  
 10. RELEASE TRANSMIT BUTTON  
 11. WAIT FOR 10 SECONDS - IF NO RESPONSE  
 REPEAT CALL

1. Pressed Area Only - use as a reference and subject to permission.  
 2. 16 - Channel 16 is the international emergency channel.  
 3. Always standby 16 - Channel 16 is the international emergency channel.

© 2008 Coastguard Maritime (UK) Ltd. www.coastguard.gov.uk



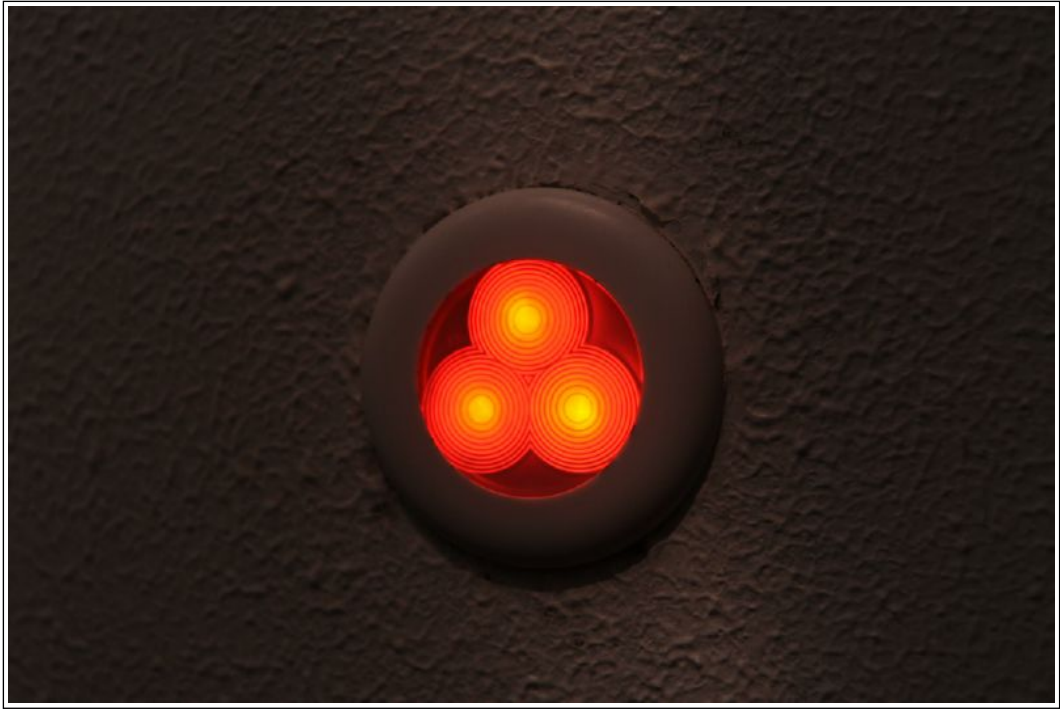
SALE



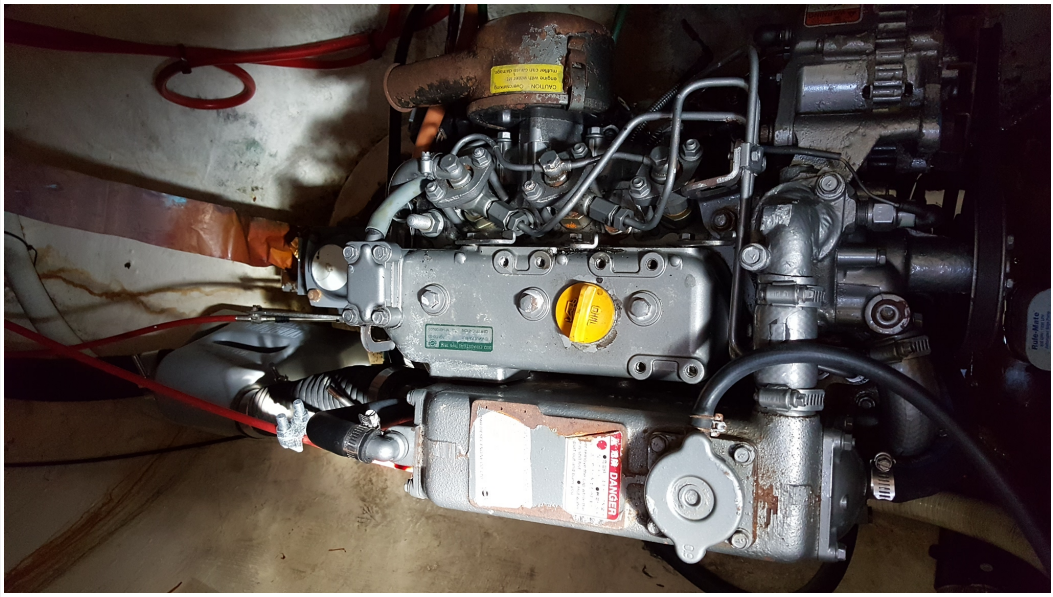
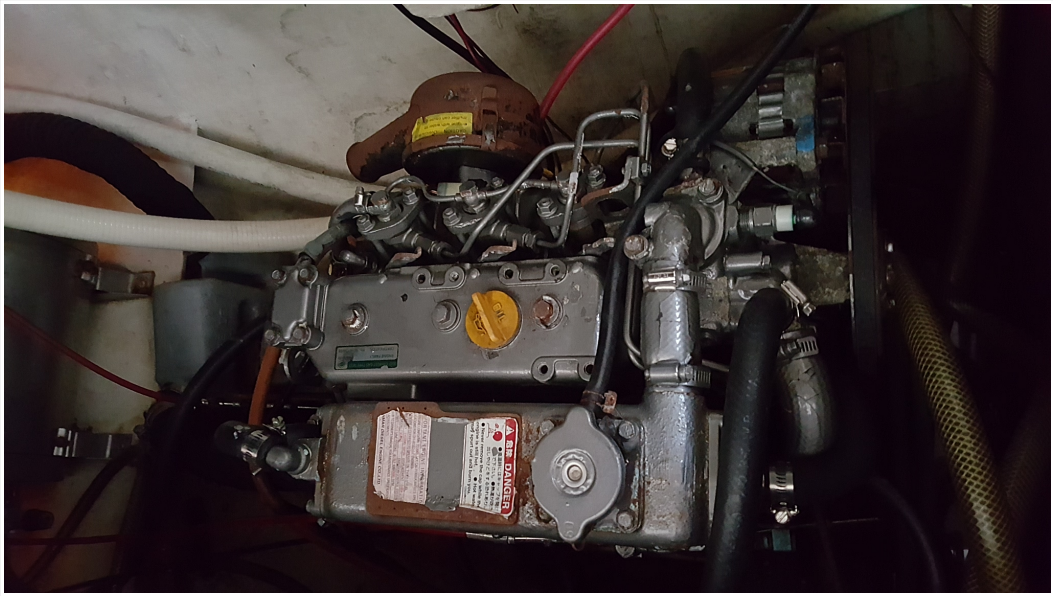








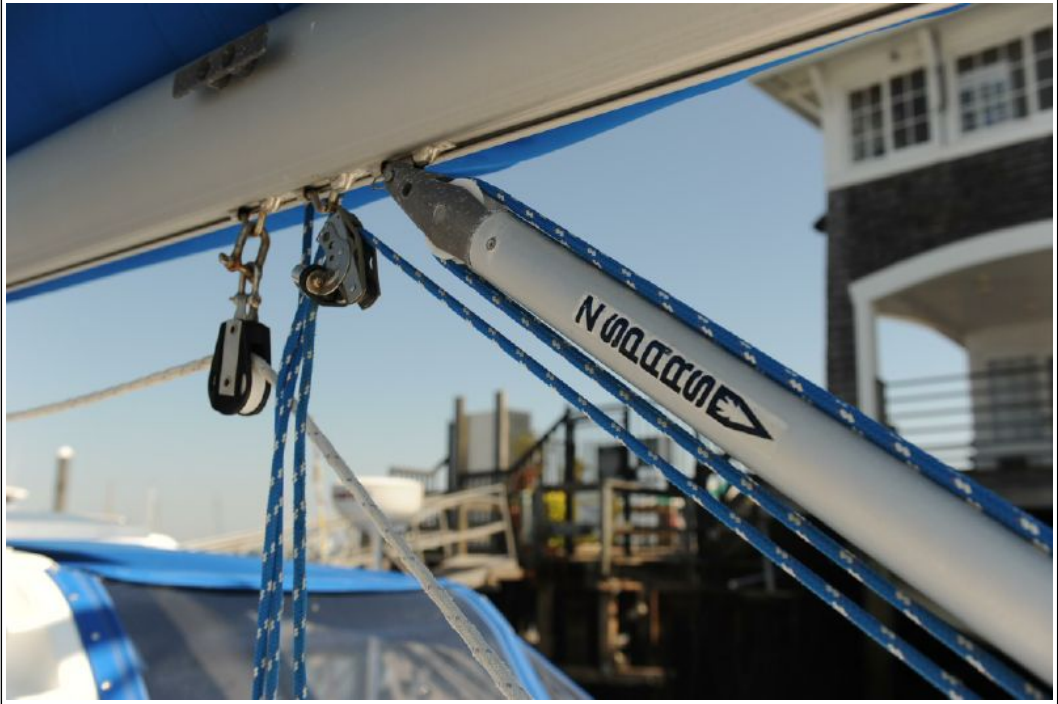
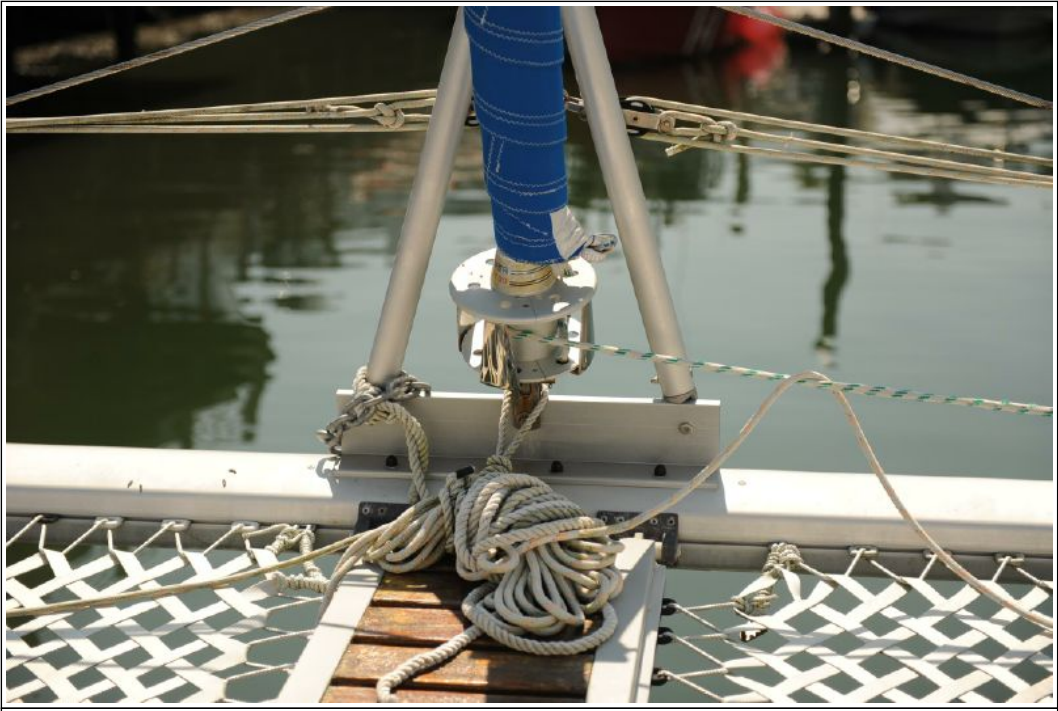




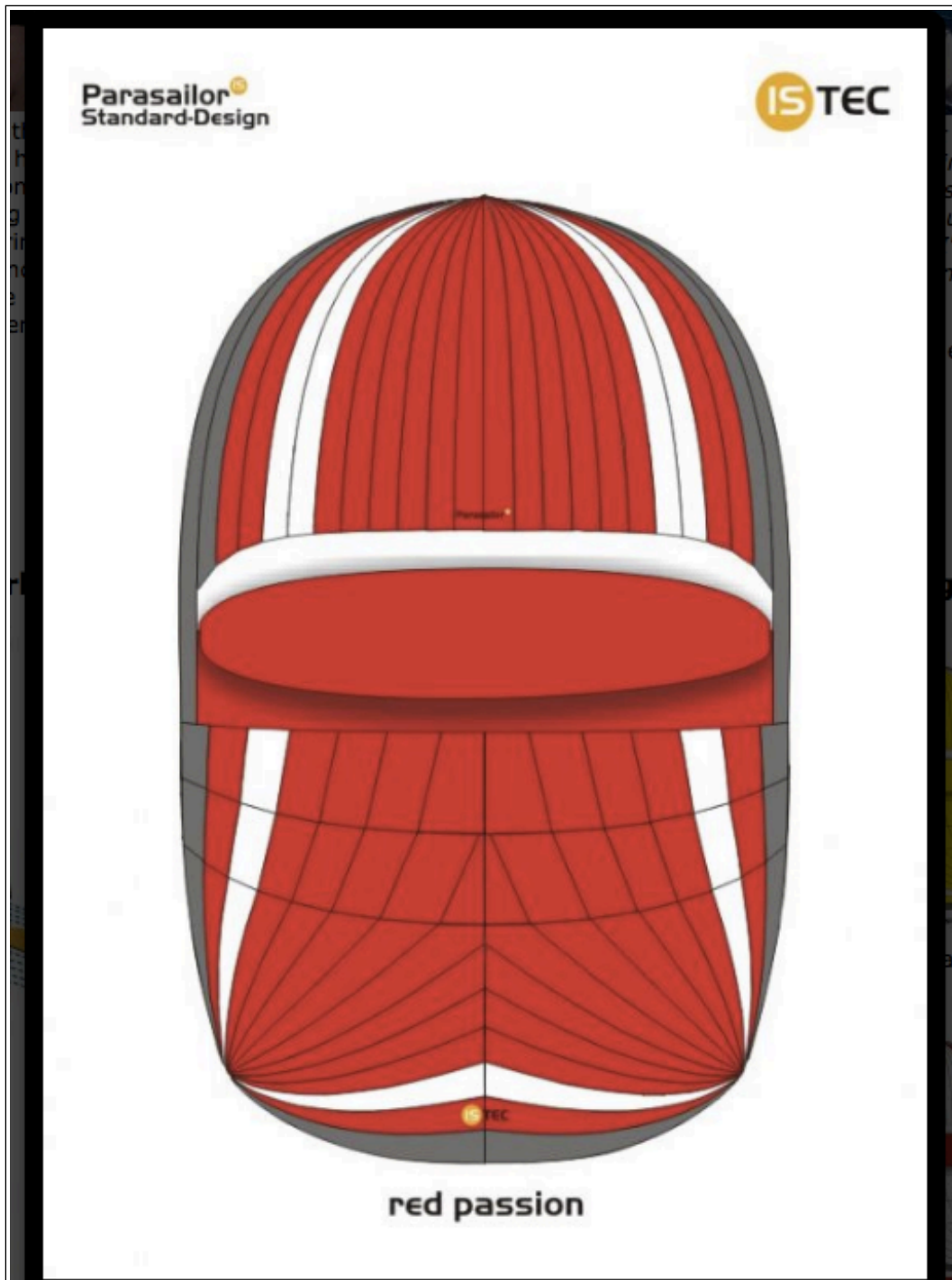












### **Disclaimer**

The Company offers the details of this vessel in good faith but cannot guarantee or warrant the accuracy of this information nor warrant the condition of the vessel. A buyer should instruct his agents, or his surveyors to investigate such details as the buyer desired validated. This vessel is offered subject to prior sale, price change, or withdrawal without notice. Photos may not properly reflect the current condition of the actual vessel offered for sale. In some cases stock photographs may have been used.

THIS VESSEL IS NOT FOR SALE IN US WATER TO USA CITIZENS OR RESIDENTS.

### **Mechanical Disclaimer**

Engine and generator hours are as of the date of the original listing and are a representation of what the listing broker is told by the owner and/or actual reading of the engine hour meters. The broker cannot guarantee the true hours. It is the responsibility of the purchaser and/or his agent to verify engine hours, warranties implied or otherwise and major overhauls as well as all other representations noted on the listing.

### **Dinghy Disclaimer**

All dinghies are considered separate vessels and should have separate titles and documents. There is no guarantee as to the title of the dinghy on this vessel so Buyer accepts that while he may receive the dinghy included in the transaction, he may not receive the proper title to it.