

1999 Pilothouse Trawler 32 BLUE YONDER



Basic Vessel Summary

Manufacturer:	NORDIC TUG
Model:	Pilothouse Trawler 32
Model Year:	1999
Year Built:	1999
Type of Yacht:	Power
Price:	\$138,000
Condition:	Used
Status:	Sold
Location	St. Augustine Florida (FL)
Manuf. Length:	32' (9.75 m)
Minimum Draft:	3' 9" (1.14 m)
Beam:	11' (3.35 m)
No. of Cabins:	1
No. of Heads:	1

Fuel Capacity:	200 g
Water Capacity:	100 g
Holding tank:	One
Weight - Displacement:	8 ton (16000 lb)
Hull Material:	Fiberglass Reinforced Plastic- FRP
Hull Configuration:	Monohull

Boat Description:

This Nordic Tug 32 is a high quality yacht for cruising. Her 3' 9" draft, reliable 220 Cummins diesel, full Electronics, full air conditioning with reverse cycle heat and 10 foot bridge clearance make her an ideal boat for cruising the great loop, the inland waterway, exploring creeks and rivers, or a trip to the Bahamas. BLUE YONDER is a fuel efficient cruising vessel featuring classic Nordic Tug styling

Full Specification

Galley

2-BURNER Gas Cooktop

Deep Stainless sink; hot and cold pressure water with Water Filter. Nova Kool double door separate refrigerator and freezer AC/DC Teak faced cabinets and doors

110 Volt GFI duplex outlet

Sharp Carousel microwave/convection oven (2015)

Marine Air 16,000 BTU air conditioner reverse cycle (2015) Seven windows with blinds

Custom adjustable height folding teak dining table Stainless Steel Water Heater

Deck & Equipment

New Hull Paint Dupont Royal Blue with 3 additional clear coats for UV protection (2013)

Bruce Anchor– 50 foot chain and 150' rope rode Salon door and overhead hatch

Simpson-Lawrence manual windlass

Stainless steel bow roller assembly for anchor and rode

Lazarette hatch in cockpit soul with access to steering gear and misc, storage

Stainless steel rails: fore deck, cockpit, and cabin top Cockpit deck box

Bronze cleats (8)

30-amp shore power connectors (2) Stainless steel Sampson post

Cable TV / telephone jack connections Exterior anodized aluminum sliding doors (2) Radar reflector mounted inside Deck Stack Full beam swim platform

Transom walk-thru and Weaver Davit assembly makes retrieving the tender a breeze!

Electronics & Navigation

Cummins Engine Instruments: oil pressure, water temp., volts, RPMs

New Raymarine touchscreen chart plotter, GPS, HD Radar, Tridata display.

New Raymarine Autopilot with wireless remote

VHF & Loud Hailer

Exterior spot light with remote operation at helm Bomar overhead hatch with Solar Vent

Access to main deck: port & starboard side doors

Teak trim at helm station with custom teak filler for extended navigation work area at Helm.

12 VDC helm station lights, (night running and white) (2) Sony radio/CD player with USB port

Electrical, Power & Plumbing

Vacu-flush head with holding tank and overboard macerator

Dual self-leveling fresh water tanks allow fill from port or starboard.

Separate shower area in head

Freedom 4000 inverter/charger with control panel

2 50Ft 30 Amp shore power cables

2 Additional 6 volt auxiliary batteries with 2 8D battery banks (2015)

Battery selector switch with emergency battery combiner

12 volt lighting throughout, incl. engine room

AC and DC voltmeters and ammeters Auto/bilge pump with high water alarm Heater craft cabin heater

Ritchie compass

12 volt and 110 volt service panels Windshield wipers (3)

2 Marine Air reverse cycle heat and air conditioning units: (16,000 btu Salon and 8,000 btu (forward birth and head).

Engine & Mechanical

220 HP Cummins 6BT5.9M diesel: Cummins Instruments: oil pressure, water temp., volts, RPMs

Engine room sound/heat insulation Groco bronze sea strainers (3) Hydraulic steering

PSS drip less shaft seal

1 1/4 inch stainless steel main shaft

Side Power SP-55 bow thruster (2013)

[Additional Information](#)

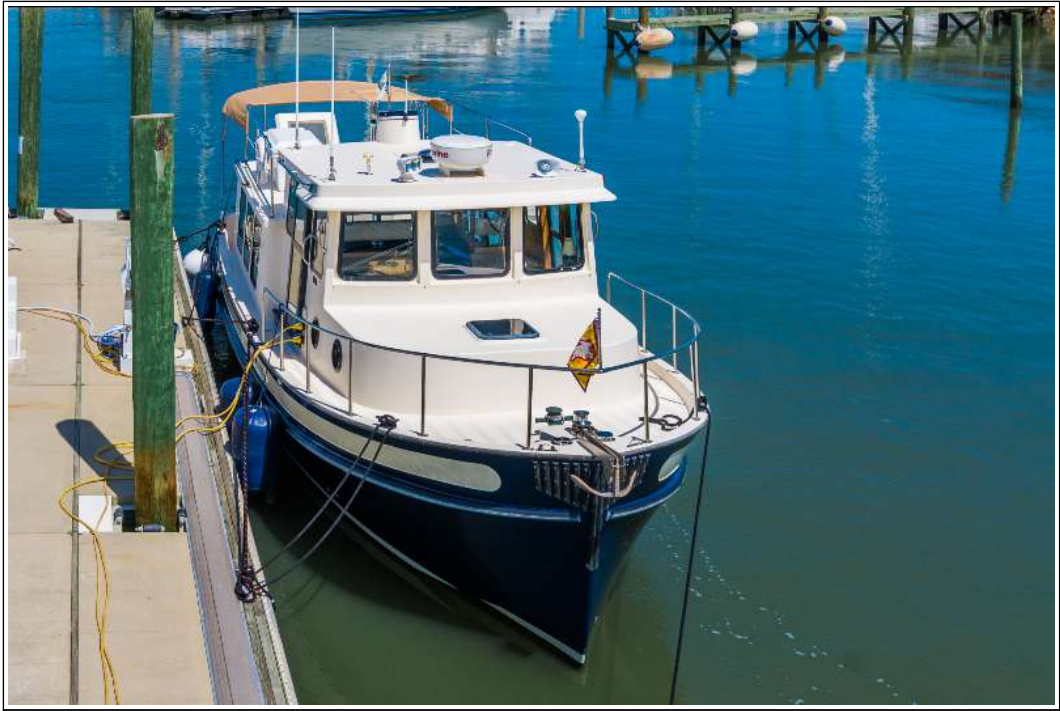
BLUE YONDER has been constantly upgraded and maintained since purchased. Recent upgrades include: New Hull Paint job in Royal Blue, New Bottom Paint, New Interior Upholstery, New Electronic, New synthetic Teak and Holly Flooring and new exterior aft Bimini give this Nordic a Bristol look sure to impress.

Image Gallery













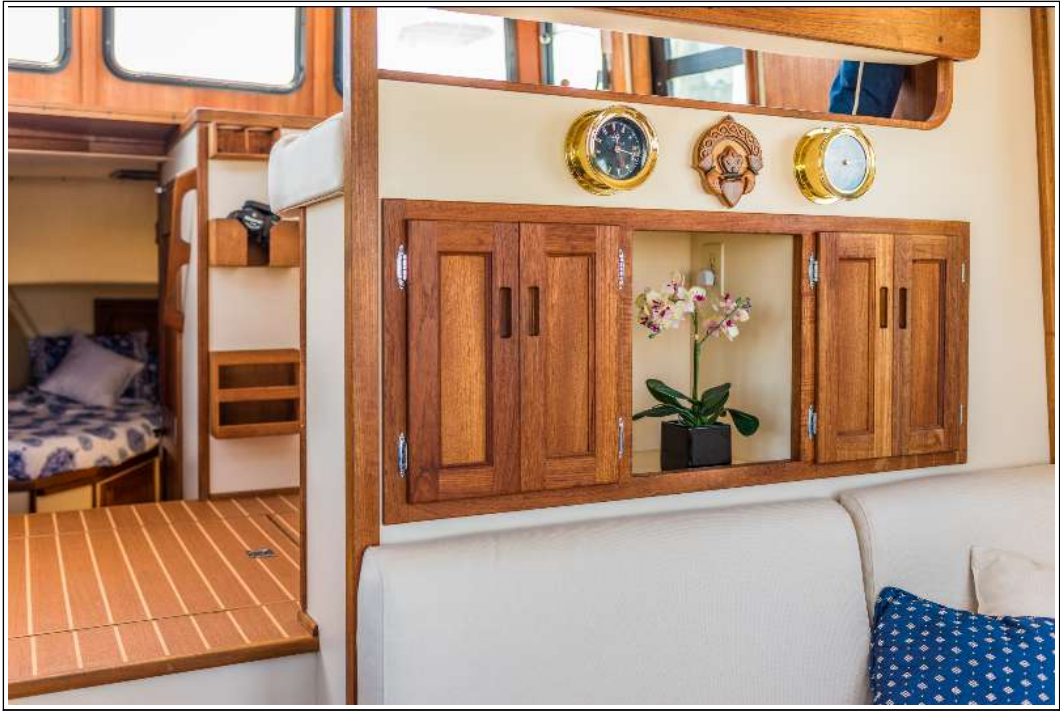








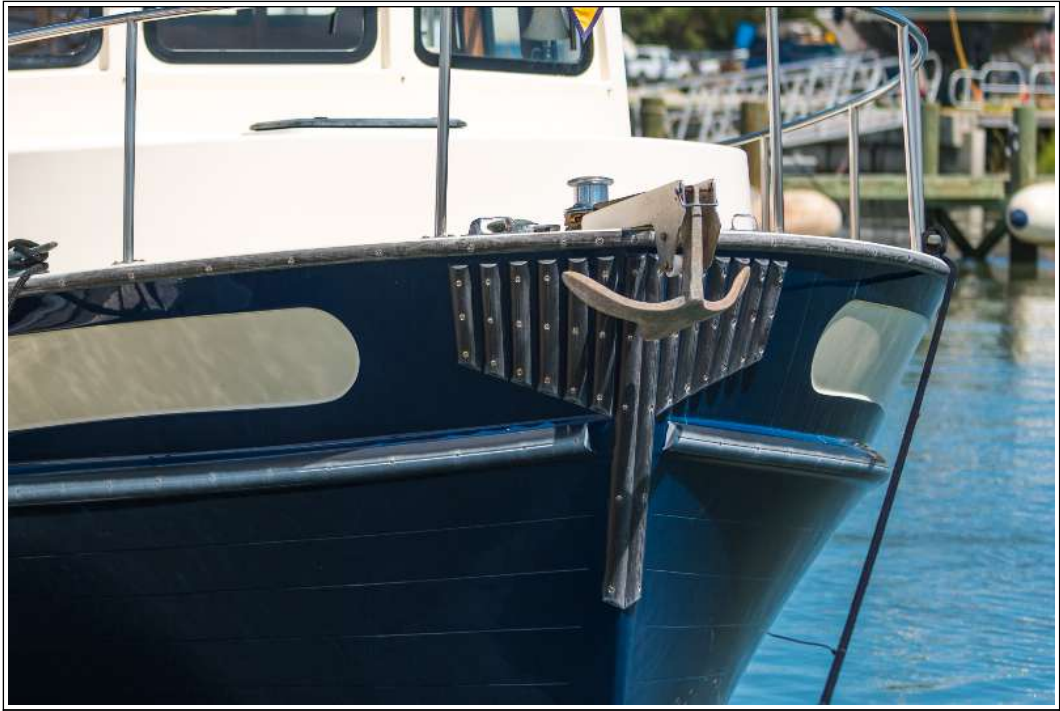




































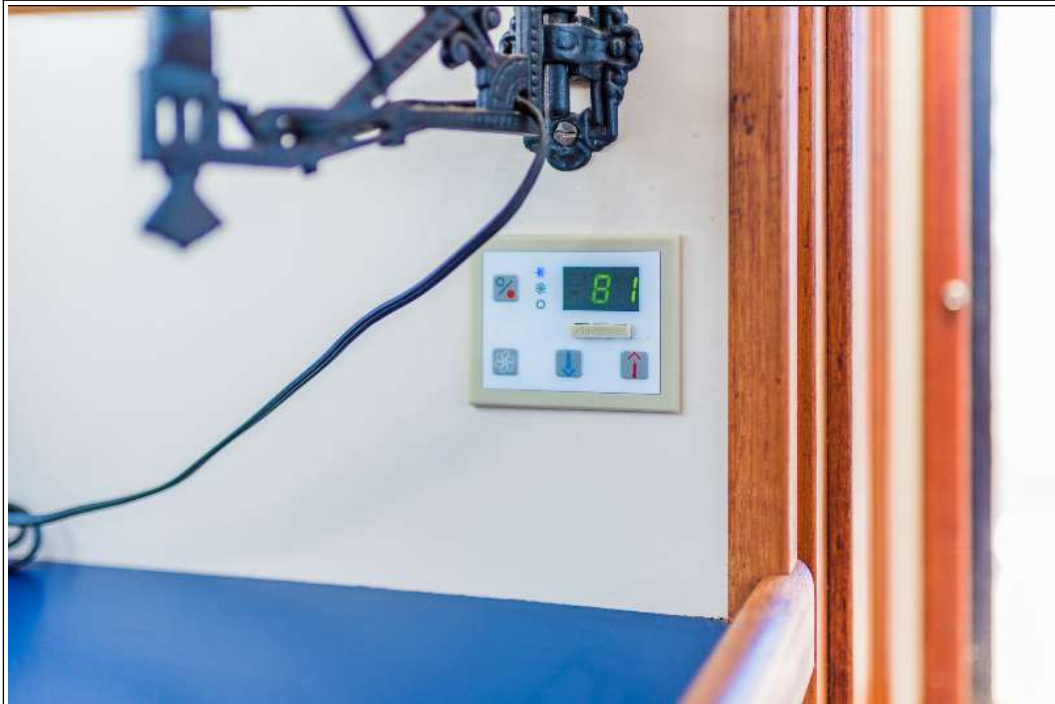












Disclaimer

The Company offers the details of this vessel in good faith but cannot guarantee or warrant the accuracy of this information nor warrant the condition of the vessel. A buyer should instruct his agents, or his surveyors to investigate such details as the buyer desired validated. This vessel is offered subject to prior sale, price change, or withdrawal without notice. Photos may not properly reflect the current condition of the actual vessel offered for sale. In some cases stock photographs may have been used.

Mechanical Disclaimer

Engine and generator hours are as of the date of the original listing and are a representation of what the listing broker is told by the owner and/or actual reading of the engine hour meters. The broker cannot guarantee the true hours. It is the responsibility of the purchaser and/or his agent to verify engine hours, warranties implied or otherwise and major overhauls as well as all other representations noted on the listing.

Dinghy Disclaimer

All dinghies are considered separate vessels and should have separate titles and documents. There is no guarantee as to the title of the dinghy on this vessel so Buyer accepts that while he may receive the dinghy included in the transaction, he may not receive the proper title to it.