

2014 Leopard 44 THE LIGHT



Basic Vessel Summary

Manufacturer:	LEOPARD
Model:	Leopard 44
Model Year:	2014
Year Built:	2014
Type of Yacht:	Sail
Price:	\$350,000
Condition:	Used
Status:	Catamaran for Sale
Location	Savannah Georgia (GA)
Manuf. Length:	44' (13.41 m)
Maximum Draft:	4' 54" (2.59 m)
Minimum Draft:	4' 48" (2.44 m)
Beam:	23' 8" (7.21 m)
LWL:	42' (12.80 m)
Mast Height Clearance:	68' (20.73 m)
No. of berths:	12
No. of Cabins:	4
No. of Heads:	4
Electric Circuit:	110 volt
Fuel Capacity:	185 g
Water Capacity:	206 g
Holding tank:	40

Cruise speed:	8
Max speed:	12
Weight - Displacement:	12.2 ton (24400 lb)
Hull Material:	Fiberglass Balsa Cored
Hull Configuration:	Catamaran
Engine Manufacturer	YANMAR
Engine Model	3JH5E
Engine Year	2013
Engine Horsepower	40
Engine Hours (Port)	1780
Engine Hours (Starboard)	1652
Engine Type	Inboard
Engine Fuel Type	Diesel
Does the boat have a generator?	No
Does a dinghy come with the boat?	Yes
Dinghy Model	Highfield aluminum
Dinghy Length	11
Dinghy Model Year	2019
Dinghy Outboard Manufacturer	HONDA
Dinghy Outboard Horsepower	20
Dinghy Outboard Year	HONDA

Boat Description:

2014 Leopard 44 Sailing Catamaran for Sale

Fully Equipped and Ready to Cruise

This 2014 Leopard 44 sailing catamaran is a well-maintained, bluewater-ready vessel now available in the Savannah, GA. Cruised from the UK across the Bay of Biscay, through the Mediterranean, across the Atlantic, and throughout the Caribbean and Bahamas to the US.

She's proven her capability and comfort offshore. She features numerous recent upgrades, including a new autopilot, steering chain, lithium batteries, solar panels, and a full aft cockpit and helm enclosure, allowing full use of outdoor living space in any weather. Sails are in excellent condition, this Leopard 44 delivers both performance and peace of mind. A major refit completed in the UK in 2019–2020 added new sails, mast, boom, standing rigging, and a Coppercoat antifouling system.

This yacht comes with a comprehensive inventory of cruising spares and is fully outfitted for long-term liveaboard or passagemaking. She's turn-key and ready for your next sailing adventure.

Full Specification

Layout & Accommodations

Double Berths x 4

Ensuite x 4

Additional Single Berths x 2 (in forepeak or used as additional storage space) Dining Table can convert to a double bed

Electric flush heads x 4

blackwater holding tanks X 2

NEW (2025) water heater

Large Galley and Saloon on Bridge Deck

Fully enclosed rear cockpit

Forward cockpit with folding tables x 2

Enclosed Helm

Galley

Gourmia GTF7860 XL convection oven

Waterlfo IC3B induction cooker

Costway 2 cu. ft. Freezer/Refrigerator

Vitrifrigo Fridge/Freezer with new gaskets

Dining Table seats 8

Magna BBQ Grill with Cover

Deck & Equipment

2020 Rocna 33 kg (73 lbs) anchor with 75mtr, 10mm chain 2020 Stainless Steel 25kg Delta anchor, as spare

Quick Aleph Series Windlass, 1000W, 12V New 2026

2020 Seldon 400 jib furler

Lewmar 45 electric winch (x1)

Lewmar 45 winch (x2)

Spinlock Double Clutch

Spinlock Triple Clutch

NEW (2025) Cockpit (aft) seat cushions

NEW (2025) Aft Cockpit and helm station enclosure

Electric Davits

External Speakers x 4

Swimming Ladder

Electronics & Navigation

Iridium Go (2020)

New Axiom Pro 9s chart plotter with updated 2025 Eastern US chart chip. 2018 Caribbean chart chip included

New Raymarine Ray50 VHF radio, antenna and RG58x

Raymarine iTC-5 analog to digital NMEA 2000 SeaTalk

NEW (2025) Raymarine Autopilot Plus

Spare Raymarine Autopilot Motor and control head Raymarine IDST810 depth, speed, and temperature transducer Raymarine SeaTalk-STNG-Converter

Raymarine C70W Multifunction Instrument Display NEW (2024) ORCA Navigation System

Bluetooth Radio

Electrical, Power & Plumbing

Victron MultiPlus-II 12/3000/120-50 120V

Victron Cerbo GX & GX Touch 50. 30ft HDMI from Cerbo GX to electrical panel for easy viewing.

Victron BMV-712 500 amp Smart Shunt

Victron BlueSolar Charger MPPT 100/50 & MPPT 100/30 and attached to Cerbo GX for monitoring

Wired AC 1 in with marine grade 10/3 stranded from shore power

Wired AC out with marine grade ANCOR 8/4 to AC board powers the entire boat.

12v DC house power system

NEW (2024) 1200W Solar Panels

2020 800W Solar Panels

NEW (2024) H2 x 600W High Performance All Black Solar

NEW (2025) Lithium 610A House Battery with JK Smart BMS NEW (2025) Lithium 305A

House Battery with JK

The air-conditioning unit has been removed; however, all plumbing and electrical connections remain in place.

Engine & Mechanical

SD60 Saildrive Units with Gori folding props

Original fixed blade props, as spare

Coppercoat in 2020

Fuel tanks cleaned (2026)

Fuel polished (2026)

Generator previously installed; fuel lines and electrical connections remain in place for future installation.

1652 starboard

1780 port.

1000 hour service completed this month

Fuel tanks cleaned with a NACE (AMPT) Certificate coating inspection.

New sail drive seals and boots.

Sails & Rigging

2020 Square top Mainsail

2020 Genoa

2020 Furling Code 0

Spinnaker with snuffer (undamaged)

2020 New ZSpar Mast fitted

2020 All new dyeform Rigging with Staylock Fittings 2020 New ZSpar Boom

2020 New Front Crossbeam with Seagull Striker and Stay 2020 All new running rigging, with spare

2020 300 mtr drum of 12mm sheet rope

2020 200 mtr drum of 8mm braid on braid

Additional Information

Underfloor storage in all cabins and in the main

All fire extinguishers New 2025

Replace carbon monoxide and smoke detectors 2025

saloon Life Raft - Viking Ocean, 8 man Last serviced 2020 2021 Cobra hand held VHF

2 x Rescue Me EPIRB

2 X AIS personal transponders for life jackets

2020 AIS En-Track Transceiver

Walkie-Talkies x 2

1 x KRU lifejacket with harness and tether serviced 2025

5 x lifejackets with harness and tether serviced 2025

Large Coolbox

Original Fixed Propellers x 2

5 x Lewmar portllette not installed

Image Gallery

















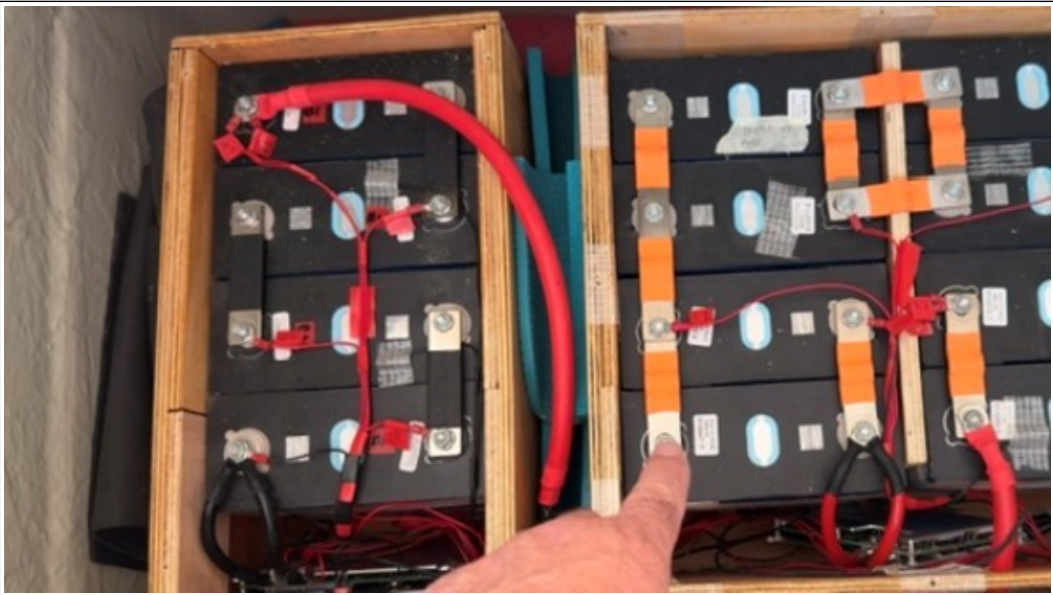




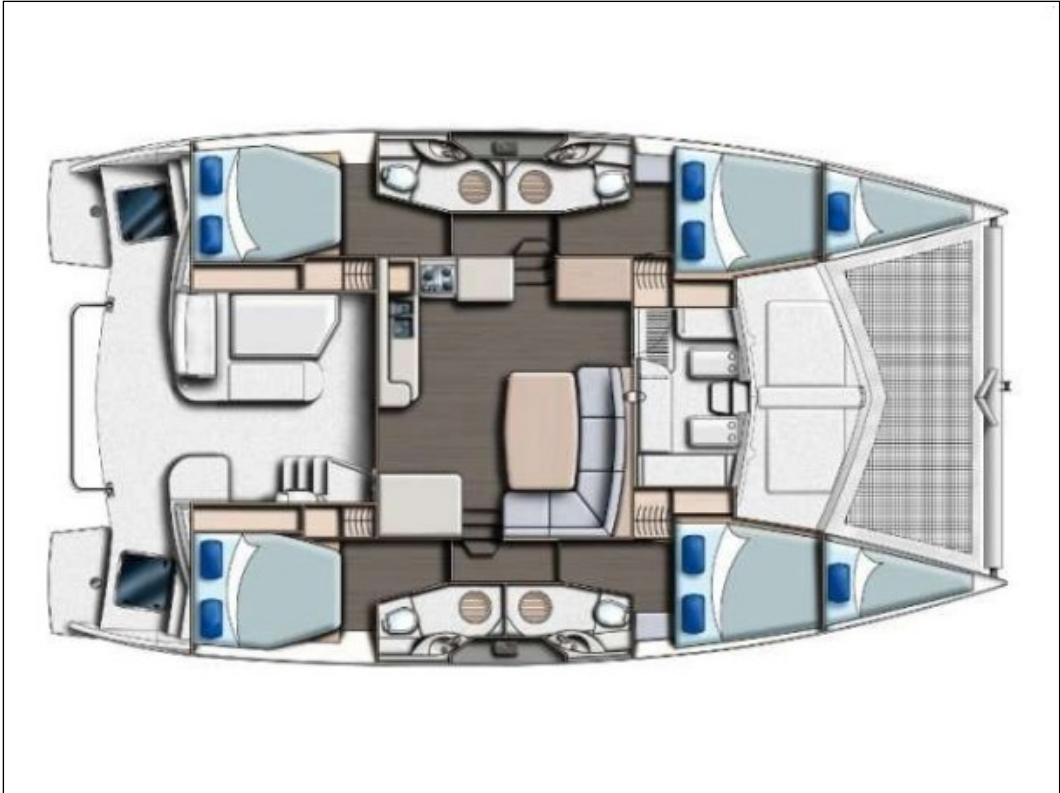




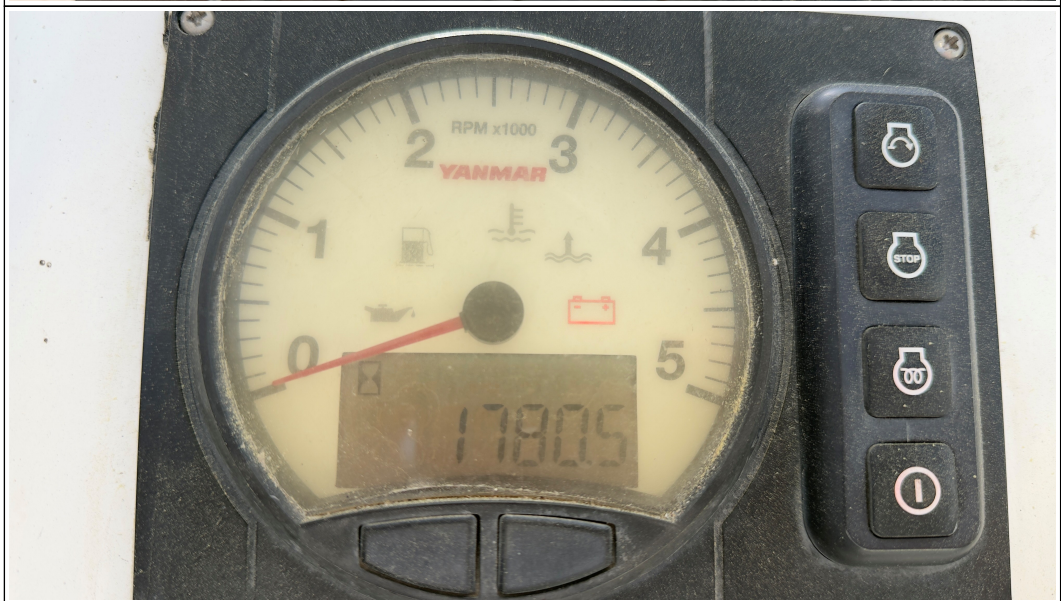
















Disclaimer

The Company offers the details of this vessel in good faith but cannot guarantee or warrant the accuracy of this information nor warrant the condition of the vessel. A buyer should instruct his agents, or his surveyors to investigate such details as the buyer desired validated. This vessel is offered subject to prior sale, price change, or withdrawal without notice. Photos may not properly reflect the current condition of the actual vessel offered for sale. In some cases stock photographs may have been used.

Mechanical Disclaimer

Engine and generator hours are as of the date of the original listing and are a representation of what the listing broker is told by the owner and/or actual reading of the engine hour meters. The broker cannot guarantee the true hours. It is the responsibility of the purchaser and/or his agent to verify engine hours, warranties implied or otherwise and major overhauls as well as all other representations noted on the listing.

Dinghy Disclaimer

All dinghies are considered separate vessels and should have separate titles and documents. There is no guarantee as to the title of the dinghy on this vessel so Buyer accepts that while he may receive the dinghy included in the transaction, he may not receive the proper title to it.