

2015 Leopard 48 PILAR



Basic Vessel Summary

Manufacturer:	LEOPARD
Model:	Leopard 48
Model Year:	2015
Year Built:	2015

Type of Yacht:	Sail
Price:	\$599,000
Condition:	Used
Status:	Under Contract
Location	Charleston South Carolina (SC)
Manuf. Length:	48' (14.63 m)
Maximum Draft:	5' (1.52 m)
Minimum Draft:	5' (1.52 m)
Beam:	25' (7.62 m)
Mast Height Clearance:	75' (22.86 m)
No. of berths:	3
No. of Cabins:	3
No. of Heads:	3
Electric Circuit:	110 volt
Fuel Capacity:	190 g
Water Capacity:	200 g
Holding tank:	60
Cruise speed:	8
Max speed:	11
Weight - Displacement:	34.15 ton (68,300 lb)
Hull Material:	Fiberglass Reinforced Plastic- FRP
Hull Configuration:	Catamaran
Engine Manufacturer	YANMAR
Engine Model	4HJ5CE
Engine Year	2015
Engine Horsepower	57
Engine Hours (Port)	3249
Engine Hours (Starboard)	3362
Engine Type	Inboard
Engine Configuration	Twin
Engine Fuel Type	Diesel
Engine Condition	Used
Does the boat have a generator?	Yes
Generator Model	NORTHER LIGHTS
Generator Operating Hours	4867
Generator Horsepower	9KW
Does a dinghy come with the boat?	Yes
Dinghy Model	HIGHFIELD 380
Dinghy Length	11
Dinghy Model Year	2022
Dinghy Outboard Manufacturer	TOHATSU
Dinghy Outboard Horsepower	30
Dinghy Outboard Year	2022

Boat Description:

The Leopard 48 Sailing Catamaran for sale is widely regarded as one of the best-performing models in the Leopard fleet, offering an exceptional balance of speed, comfort, and offshore capability. This privately owned, never-chartered Leopard 48 is a two-owner vessel that has been extensively upgraded to create a truly self-sufficient blue-water cruising catamaran.

Cruised exclusively by an experienced couple for more than 25,000 nautical miles, the yacht has been carefully maintained, with guest cabins remaining unused and preserved in excellent condition. Designed for long-range ocean passagemaking, this Leopard 48 catamaran is an ideal choice for sailors seeking a proven, high-performance cruising multihull with modern systems, reliability, and exceptional livability.

Full Specification

Layout & Accommodations

Upgrades include new North Sails, Bow Sprit and compression post.

Multi-Net Dyneema split trampoline and Parasail.

New ReLion RB300 lithium battery bank (4) with 1200 Ah capacity and 1500 watts solar on custom coach roof solar array, and Spectra Water Maker.

Custom King Size bed in owner's suite is the envy of all L48 owners.

All mattresses are custom high quality memory foam.

(4) Raymarine MFD's (chart plotters), Starlink Gen 3 custom mount, Down-vision sonar, and new Quantum Raymarine Radar.

Brunton (3) blade folding props with line cutters.

Rigged for fishing with cockpit saltwater wash-down.

Induction cook-top and Breville oven for all electric cooking in the cabin.

Propane gas grill stern mounted.

Northern Lights 9KW Genset, (3) A/Cs.

2022 Highfield 380 dinghy with Tohatsu 30HP outboard, electric start, and electric trim & tilt.

This boat is a must see to appreciate the excellent care given by the present owners.

Galley

Induction stovetop, Breville oven, no gas in galley.

Custom appliance shelf and additional dedicated inverter for galley.

Deck & Equipment

(2) electric winches plus (1) manual for mainsail sheet.

Added blocks and rigging for Parasail.

Fresh and salt water anchor wash, plus saltwater washdown in cockpit for fishing.

Full enclosure in cockpit and helm station.

New North Sails sails and lazy jack sail bag.

Electronics & Navigation

(4) Raymarine MFD chart plotters, Class A AIS, Icom VHF with helm handset.

Raymarine autopilot with handheld remote.

DownVision depth sounder with CHIRP display.

Starlink Gen 3 custom mount.

(4) battery monitors in nav.

Electrical, Power & Plumbing

110-volt shore power with (2) 30A shore power cords and plug.

12-volt house system with 1200 AH ReLion RB300 LiFePO4 house batteries and 1500 watts solar on custom coach roof mount, with Victron solar controllers and app data.

(3) heads with fresh/saltwater use.

Spectra water maker plus 200-gallon tank capacity.

Engine & Mechanical

(2) Yanmar 4HJ5CE / SD60 sail drives with Brunton (3) blade folding props and line cutters.

Sails & Rigging

New North Sails Dacron main, 3Di genoa, and Isetec Parasailor.

Rigged for asymmetrical and/or Code Zero with new bow sprit and compression post.

Additional Information

New bottom paint, hull compounded and waxed, saildrive seals and service completed March 2026.

Image Gallery







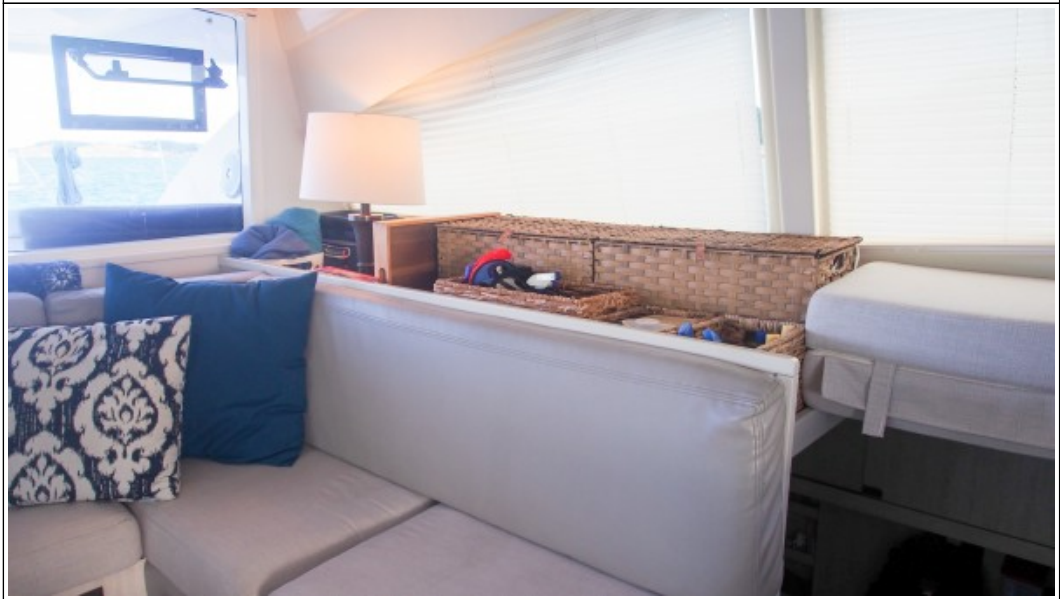


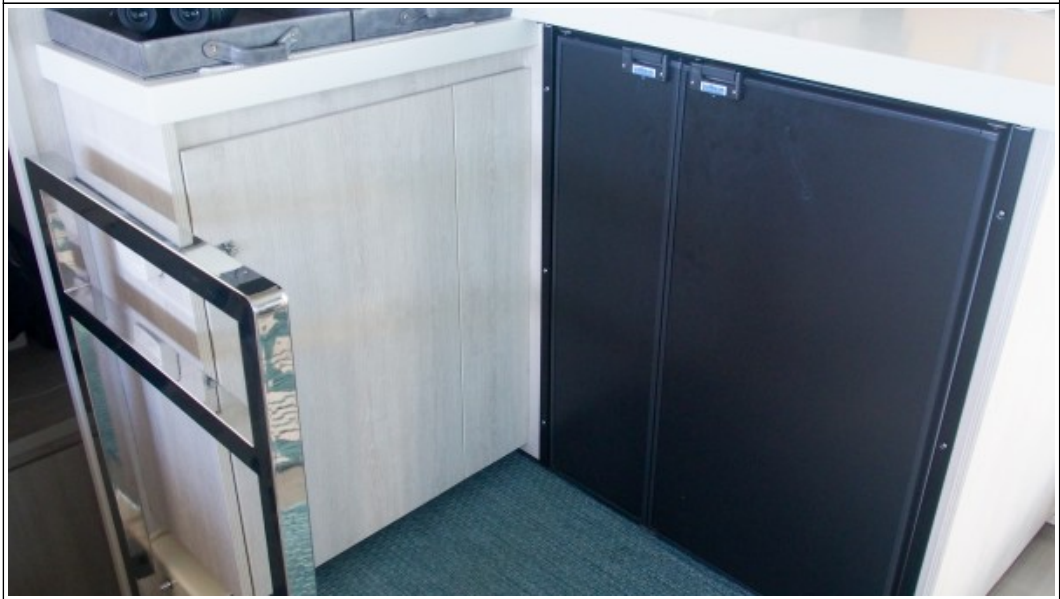
















































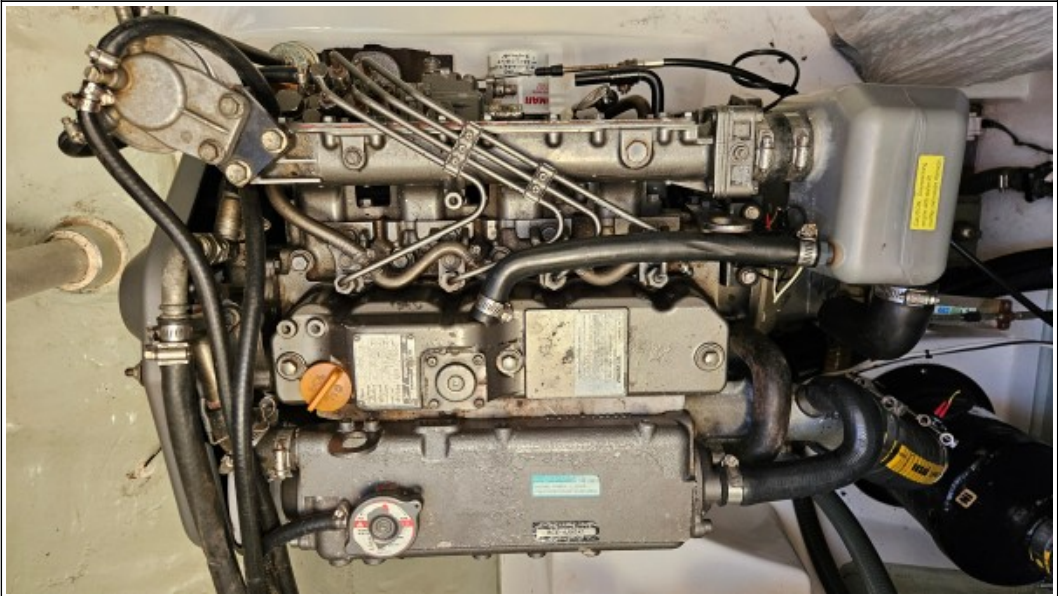


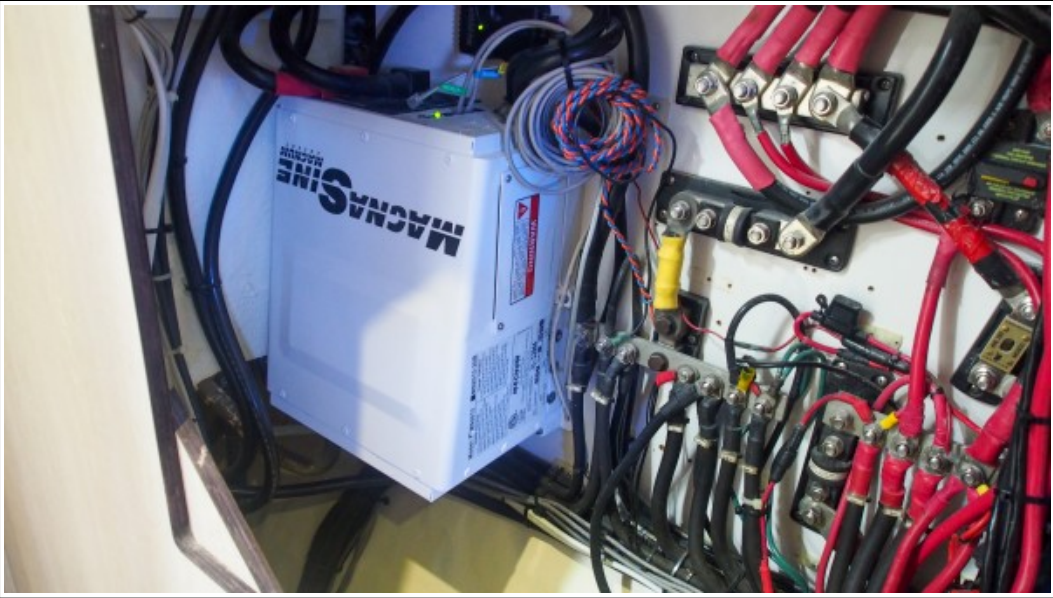






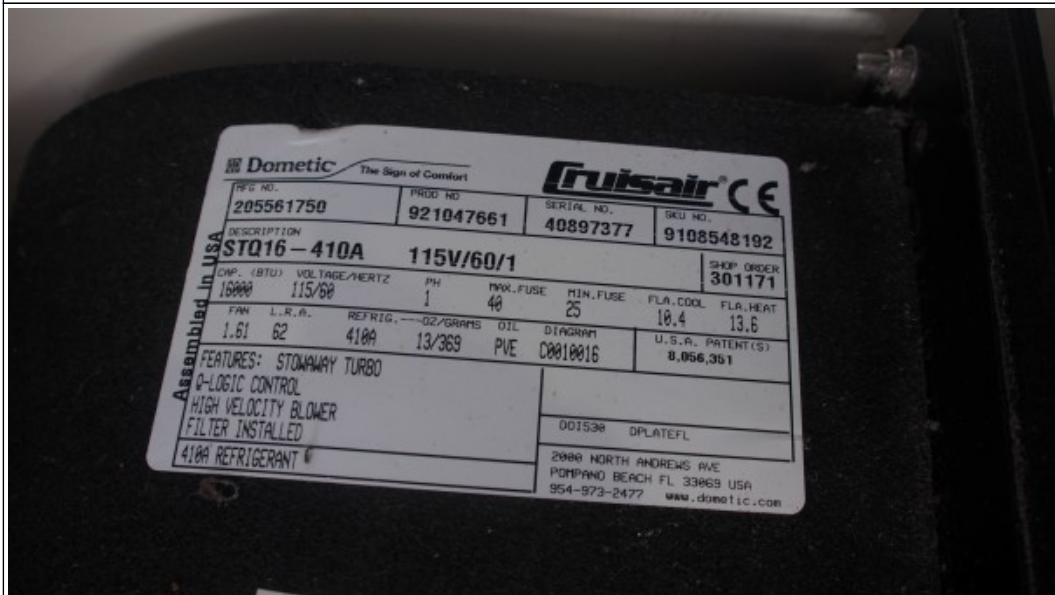


















Disclaimer

The Company offers the details of this vessel in good faith but cannot guarantee or warrant the accuracy of this information nor warrant the condition of the vessel. A buyer should instruct his agents, or his surveyors to investigate such details as the buyer desired validated. This vessel is offered subject to prior sale, price change, or withdrawal without notice. Photos may not properly reflect the current condition of the actual vessel offered for sale. In some cases stock photographs may have been used.

Mechanical Disclaimer

Engine and generator hours are as of the date of the original listing and are a representation of what the listing broker is told by the owner and/or actual reading of the engine hour meters. The broker cannot guarantee the true hours. It is the responsibility of the purchaser and/or his agent to verify engine hours, warranties implied or otherwise and major overhauls as well as all other representations noted on the listing.

Dinghy Disclaimer

All dinghies are considered separate vessels and should have separate titles and documents. There is no guarantee as to the title of the dinghy on this vessel so Buyer accepts that while he may receive the dinghy included in the transaction, he may not receive the proper title to it.