

## 2017 Lagoon 42 NEVER SAY NEVER



### Basic Vessel Summary

<b>Manufacturer:</b>	LAGOON
<b>Model:</b>	Lagoon 42
<b>Model Year:</b>	2017
<b>Year Built:</b>	2016
<b>Type of Yacht:</b>	Sail
<b>Price:</b>	\$469,000
<b>Condition:</b>	Used
<b>Status:</b>	Sold
<b>Location</b>	Pompano Beach Florida (FL)
<b>Manuf. Length:</b>	42' ( 12.80 m)
<b>Maximum Draft:</b>	4' 1" ( 1.24 m)
<b>Minimum Draft:</b>	4' 1" ( 1.24 m)
<b>Beam:</b>	25' 4" ( 7.72 m)
<b>LWL:</b>	41' ( 12.50 m)
<b>Mast Height Clearance:</b>	71' ( 21.64 m)
<b>No. of berths:</b>	3 DOUBLES
<b>No. of Cabins:</b>	3
<b>No. of Heads:</b>	3
<b>Electric Circuit:</b>	110 volt

<b>Fuel Capacity:</b>	160 g
<b>Water Capacity:</b>	80 g
<b>Holding tank:</b>	3
<b>Max speed:</b>	8
<b>Weight - Displacement:</b>	13.23 ton (26,460 lb)
<b>Hull Material:</b>	Fiberglass
<b>Hull Configuration:</b>	Catamaran
<b>Engine Manufacturer</b>	YANMAR
<b>Engine Model</b>	4JH4
<b>Engine Year</b>	2016
<b>Engine Horsepower</b>	57
<b>Engine Hours (Port)</b>	1735
<b>Engine Hours (Starboard)</b>	1732
<b>Engine Type</b>	Inboard
<b>Engine Configuration</b>	Twin
<b>Engine Fuel Type</b>	Diesel
<b>Engine Condition</b>	Used
<b>Does the boat have a generator?</b>	Yes
<b>Generator Model</b>	ONAN
<b>Generator Operating Hours</b>	897
<b>Generator Horsepower</b>	13.5 KW
<b>Does a dinghy come with the boat?</b>	Yes
<b>Dinghy Model</b>	ZODIAC
<b>Dinghy Length</b>	11 FT
<b>Dinghy Model Year</b>	2024
<b>Dinghy Outboard Manufacturer</b>	YAMAHA
<b>Dinghy Outboard Horsepower</b>	25
<b>Dinghy Outboard Year</b>	2024

### [Boat Description:](#)

The 2016 Lagoon 42 "Never Say Never" is a well-maintained owner's version catamaran offering comfort, performance, and true turnkey readiness. Never chartered and built to full U.S. specifications, this three-cabin layout provides excellent space and privacy and is duty paid and available for immediate sale.

Equipped for serious cruising, she features electric winches, a Code Zero, radar and AIS, Starlink connectivity, air conditioning and heating, a generator, water maker, solar panels, inverter, and new batteries. Recent upgrades include new bottom paint, recent engine service with sail drive seals, new running rigging, and new exterior upholstery, reflecting consistent care and light use with low engine and generator hours.

The teak cockpit flooring, cockpit refrigerator, washer and dryer, electric heads, and new full cockpit and helm enclosure create a comfortable and functional living space, while the large

center-console dinghy adds versatility at anchor. The Lagoon 42 remains one of the most sought-after cruising catamarans, and "Never Say Never" is an excellent opportunity for buyers seeking a fully equipped, ready-to-cruise sailing catamaran.

## Full Specification

### Layout & Accommodations

ALL AC SERVICED 2025

PRESSURE WATER

COCKPIT FRIDGE

HARD DODGER AND ISINGLASS SURROUND

FULL ISINGLASS COCKPIT SURROUND

SCREENS FOR MAIN HATCHES AND SHADES

TEAK COCKPIT

DECK/ANCHOR WASH SYSTEM

ELECTRIC HEAD

DECK PUMP-OUT AND OVERBOARD PUMPING SYSTEM

2 FLAT SCREEN TVS

100V WATER HEATER

PORT SIDE AFT SHOWER IS SEPARATE WITH DRY HEAD

### Galley

GALLEY HAS LOADS OF STORAGE

NEW RUNNING RIGGING 2023

CODE ZERO TOPDOWN TROSION LUFF

OVERHEAD GALLEY LIGHTS

12V FANS THROUGHOUT

SPLENDID CLOTHES WASHER AND DRYER 110V IN CABINET

ENO 3 BURNER PROPANE STOVE

ENO PROPANE OVEN

DANBY MICROWAVE

VITRIFIGO GALLEY FRIDGE/FREEZER

VITIFRIGO TOP LOAD GALLEY

### Deck & Equipment

ROCNA 33KG ANHOR

DELTA 20KG SPARE ANCHOR

WINDLASS  
CHAIN ANCHOR RODE  
CHAIN COUNTER  
WINDLASS COUNTRON/HELM/CHAIN LOCKER  
2 ELECTRIC 46 2 SPEED HARKEN  
2 46 2 SPEED HARKEN  
LED DECK LIGHTS  
FRESH WATER WASH DOWN PUMP  
SALT WATER WASH FOR ANCHOR  
COMPOUNDED AND WAXED JAN 2026  
NEW DYNEEMA LIFE LINES AND ALL NEW FITTING JAN 2026  
NEW TRAMPOLINE 2025

### Electronics & Navigation

2 B&G ZEUS3 W12 CHARTPLOTTER(2023)  
B&G AUTOHELM  
AUTOHELM REMOTE WIRELESS  
B&G V50 VHF WITH DISTRESS  
B&G REMOTE VHF WITH AIS & DISTRESS  
GLOBAL FIX PRO 406 MHZ GPS EPIRB  
B&G WIND, SPEED, & DEPTH INSTRUMENTS  
FORWARD FACING CAMERA MOUNTED ON MAST FOR ANCHORING  
STARLINK (ONBOARD INTERNET) 2024  
IRIDUM GO

### Electrical, Power & Plumbing

ONAN 13.5KW GENERATOR  
12V DC MAIN ELECTRICAL PANEL W/ MASTER SWITCH, CIRCUIT BREAKERS  
110V/30A AC MAIN ELECTRICAL PANEL W/MASTER SWITCH, CIRCUIT BREAKERS  
50 AMP SHORE POWER CORD  
HOUSE BANK: 4 BATTERIES AGM 840  
3 START BATTERIES  
2 CRISTEC YP012-400E BATTERY CHARGER  
CRISTEC BATTERY CHARGER FOR GENERATOR  
BATTERY MONITORING SYSTEM  
4 CRUISAIR HEAT PUMP/AC SYSTEM HVAC  
FUEL TANK MONITOR  
FRESH WATER MONITOR  
VICTRON CHARGE CONTROLLER WITH COLOR DISPLAY  
(7) SUNPOWER SOLAR CELLS 12V (700 WATTS)

## Engine & Mechanical

YANMAR 4JH4

57 HP EACH

ENGINE HOURS (PORT): 1735

ENGINE HOURS (STBRD): 1732

## Sails & Rigging

DECK STEPPED MAST

INCIDENCE SQUARE CUT MAIN WITH BATTENS

INCIDENCE SELF TACKING JIB

INCIDENCE CODE 0 FURLER

FANCOR FURLERS

STACK PACK SAIL COVER

LAZY JACKS

HARKEN BLOCKS

CODE ZERO ROLLER FURLING SAIL

## Additional Information

BOTTOM PAINTED OCT. OF 2025

PROP SPEED SPROPS AND SAIL DRIVE

Mainsail original/restitched and cleaned by North Sails Savannah 2025, jib new 2025 and

Code Zero new 2020 seldom used

**Image Gallery**



















































2100XC

Automatic Clothes Washer & Ventless Dryer



Low Heat Pre-Soak Extra Rinse Low Spin START ON/OFF

**Cotton Heavy Duty**

- 1 Super
- 2 Heavy
- 3 Regular
- 4 Express
- 5 Cotton Dry

**Permanent Press**

- 6 Heavy
- 7 Regular
- 8 Delicates
- 9 Express
- 10 Synthetic Dry

**Gentle**

- 11 Lin
- 12 Hand Dry
- 13 Hand Dry

Wash  
Rinse  
Spin  
Dry

DRY TIME  
with Ventless Dryer

WASH TEMP  
with Ventless Dryer

Extra Capacity • 12 Wash Cycles • 3 Dry Cycles • 1200 RPM High Spin • Auto Balance System

WARNING: To avoid fire or electric shock, do not use this appliance if you observe any of the following conditions:  
- The power cord or plug is damaged, frayed, or broken.  
- The appliance has been dropped or damaged.  
- The appliance has been used with a power source other than the one specified in the user manual.  
- The appliance has been used with a power source other than the one specified in the user manual.  
- The appliance has been used with a power source other than the one specified in the user manual.



































































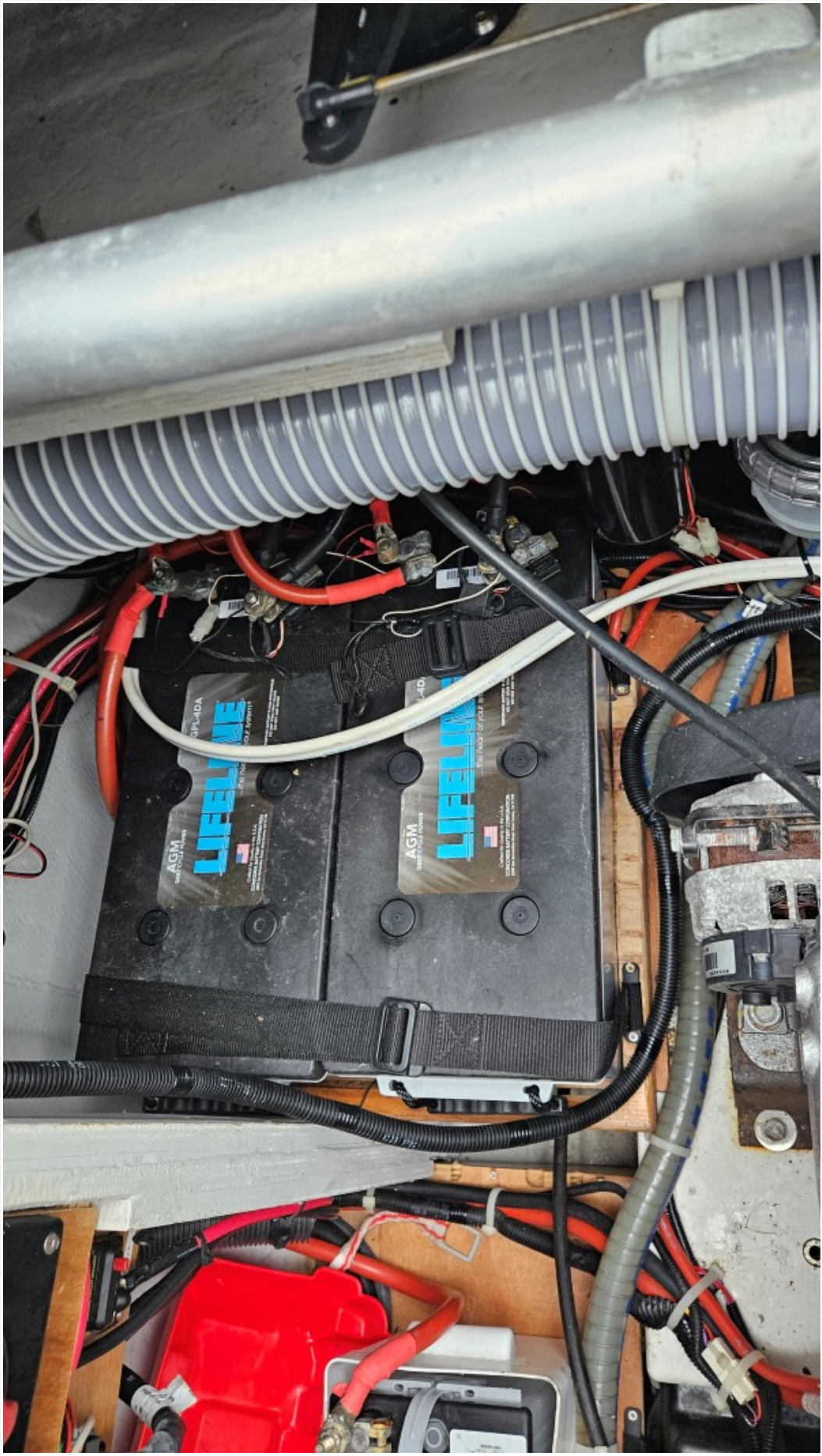


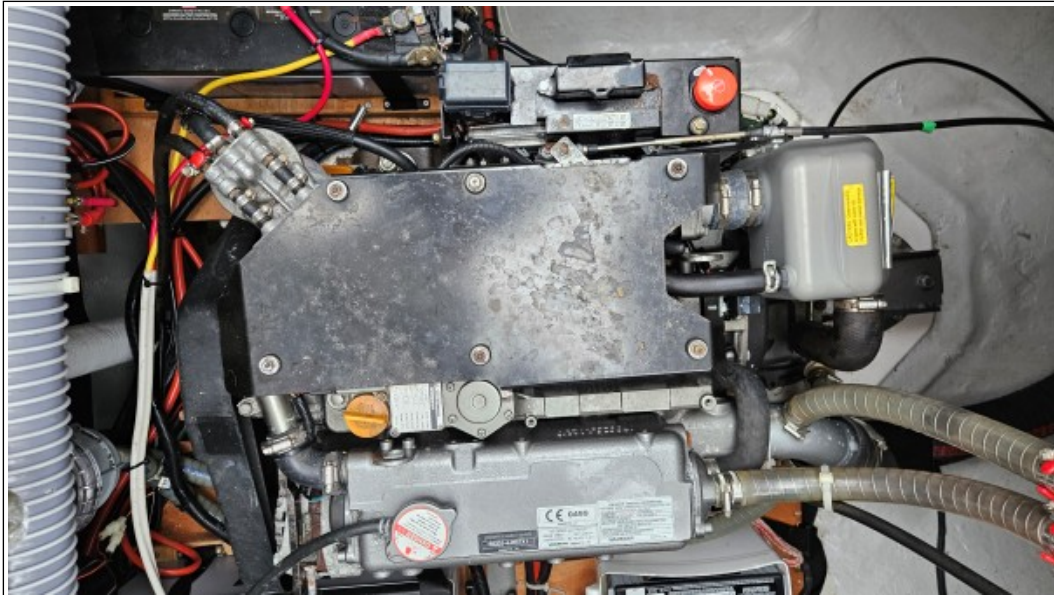












### **Disclaimer**

The Company offers the details of this vessel in good faith but cannot guarantee or warrant the accuracy of this information nor warrant the condition of the vessel. A buyer should instruct his agents, or his surveyors to investigate such details as the buyer desired validated. This vessel is offered subject to prior sale, price change, or withdrawal without notice. Photos may not properly reflect the current condition of the actual vessel offered for sale. In some cases stock photographs may have been used.

### **Mechanical Disclaimer**

Engine and generator hours are as of the date of the original listing and are a representation of what the listing broker is told by the owner and/or actual reading of the engine hour meters. The broker cannot guarantee the true hours. It is the responsibility of the purchaser and/or his agent to verify engine hours, warranties implied or otherwise and major overhauls as well as all other representations noted on the listing.

### **Dinghy Disclaimer**

All dinghies are considered separate vessels and should have separate titles and documents. There is no guarantee as to the title of the dinghy on this vessel so Buyer accepts that while he may receive the dinghy included in the transaction, he may not receive the proper title to it.