

## 2016 Lagoon 450 CONSPIRASEA



### Basic Vessel Summary

<b>Manufacturer:</b>	LAGOON
<b>Model:</b>	Lagoon 450
<b>Model Year:</b>	2016
<b>Year Built:</b>	2015
<b>Type of Yacht:</b>	Sail
<b>Price:</b>	\$449,000
<b>Condition:</b>	Used
<b>Status:</b>	Acceptance of Vessel
<b>Location</b>	Lighthouse Point Florida (FL)
<b>Duties:</b>	NOT FOR SALE IN US WATER TO USA CITIZENS OR RESIDENTS
<b>Manuf. Length:</b>	45' 83" ( 15.82 m)
<b>Maximum Draft:</b>	4' 25" ( 1.85 m)
<b>Beam:</b>	25' 75" ( 9.53 m)
<b>Mast Height Clearance:</b>	75' 7" ( 23.04 m)

<b>No. of berths:</b>	8
<b>No. of Cabins:</b>	4
<b>No. of Heads:</b>	4
<b>Electric Circuit:</b>	110 volt
<b>Fuel Capacity:</b>	274 g
<b>Water Capacity:</b>	225 g
<b>Weight - Displacement:</b>	37265 ton (74530000 lb)
<b>Hull Material:</b>	Fiberglass Reinforced Plastic- FRP
<b>Hull Configuration:</b>	Catamaran
<b>Engine Manufacturer</b>	Yanmar
<b>Engine Model</b>	4JH-57
<b>Engine Year</b>	2016
<b>Engine Horsepower</b>	57
<b>Engine Hours (Port)</b>	3743
<b>Engine Hours (Starboard)</b>	3744
<b>Engine Type</b>	Inboard
<b>Engine Configuration</b>	Twin
<b>Engine Fuel Type</b>	Diesel
<b>Engine Condition</b>	Used
<b>Does the boat have a generator?</b>	Yes
<b>Generator Model</b>	Onan
<b>Generator Operating Hours</b>	2500
<b>Generator Horsepower</b>	11kw
<b>Does a dinghy come with the boat?</b>	Yes
<b>Dinghy Model</b>	Highfield
<b>Dinghy Model Year</b>	2018
<b>Dinghy Outboard Manufacturer</b>	Yamaha E25BMH
<b>Dinghy Outboard Horsepower</b>	25

### **Boat Description:**

Step aboard Conspirasea, a stunning 2016 Lagoon 450 catamaran that perfectly combines luxury, performance, and cruising versatility. Designed for comfort and adventure, this beautifully maintained vessel features four spacious cabins, making it ideal for families or groups of friends seeking unforgettable moments at sea. Located in South Florida and cruise-ready, Conspirasea is equipped with a fully stocked galley, expansive outdoor lounging and dining areas, and a wide array of water toys and fishing gear for endless fun on the water. This Lagoon 450 boasts a bright, open layout with generous living spaces, panoramic windows, and quality finishes throughout. With detailed maintenance logs and a proven track record, she offers peace of mind and immediate readiness for coastal sailing or extended cruising. Whether you're planning a Caribbean escape, island hopping, or simply enjoying sunset sails, Conspirasea delivers the ultimate sailing lifestyle in a premium, well-equipped package. Don't miss your chance to own this exceptional catamaran—she's ready to sail wherever your dreams take you.

# Full Specification

## Layout & Accommodations

Headroom min/max 75.5" / 79"

Length of bunks 81"

## Galley

Refrigeration Interior: Isotherm C130D SS refrigerator (2023) Exterior: Isotherm C130D SS Fridge (2020)

Freezer Frigonautica SS Freezer (Original).

Stove and Oven Stove: Upgraded Verona VDGCT424FSS 4 Eye LP Stove 2022;

Cooktop: Upgraded Gasland Chef GS606MSLP Commercial Oven LP Oven 2022

Propane Shut off (2022)

Valve

Fume detector

Vented Propane Locker

Propane Tanks 2ea 10lb Aluminum tanks

Microwave Oven Premium Model White PM7078 (2020)

Barbeque Magma Catalina two level LP gas grill w/ cover, piped into propane locker directly with shutoff valve

Coffeemaker Hamilton Beach Flexbrew single cup & 10 pot coffeemaker

Watermaker Rainman Electric Watermaker, Built In, 37GPH w/ Autoflush (2016) w/ PLUS SPARE HIGH PRESSURE HOSE, 10 FILTERS & 1 CHARCOAL FILTER

Icemaker Isotherm White Ice Maker SS Model 14015762 (2020)

32" TV on swivel in galley (2024)

## Deck & Equipment

Primary Anchor Mantus 85# M1, chain 1/2" 200'

Secondary Anchor Delta Fortress 30' chain 50' rode

Dinghy Anchor 10# Plow, 1/2" chain 30' Rode

Spare Anchor 60# Plow

Mantus 85lb galvanized anchor with Mantus swivel with 200lf of 5/8" chain (2022)

Mantus anchor bridle with Mantus Claw & extra parts (2021)

Mantus mooring bridle with large Mantus snap shackle & additional Mantus clip (2021)

Mesh net trampolines

Anchor Windlass Quick Windlass, Windlass QUICK remote control at flybridge with chain counter & remote control in forward cockpit locker

Windlass brushes replaced October 2024 - additional spares on board  
Bow Anchor roller(s) yes  
Bimini Top (note headroom under) Hard Top: Dedicated Marine HD with ladder and LED puck lighting, prewired for solar (wires ran from rooftop down to stbd electrical closet) 6'6" clearance  
Side Curtain (full/bimini) Eisenglass front enclosures on Flybridge (2021)  
Eisenglass full wrap around enclosures on cockpit (2021)  
Cockpit awning Mesh sunshade off cockpit, Neso Shade Bow Awning  
Cockpit Cushions LL new cushions with self draining foam & Sileather fabric, additional cushion on top of cockpit hatch (All cushions light gray) (2023)  
Cockpit Table Slip Resistant Cockpit Table  
Fenders and Dock Lines 4ea nylon dock lines 30' gray with blue whipping (2 with chafe guard)  
2ea nylon dock lines 36' navy blue with blue whipping  
5ea F7 fenders with blue poly covers  
2ea ball fenders with blue poly covers  
2ea extendable boat hooks  
Dyneema lines on trampolines (2023)  
Soft shackle for bridle attachments to bow hulls  
Bow Pulpit and Rails Upgraded "Starboard "bow pulpit seats, SS cable lifelines & SS tube stanchions  
Swim ladder Upgraded ladder, reinforced for scuba diving use stbd only, w/ Hot & Cold controls & 12' shower hose at stbd aft sugar scoop  
Side Stanchions and Lifelines SS cable lifelines & SS tube stanchions, 1 "removable lifeline" on each side of boat for access to footsteps in hull for quick access to docks  
Life Raft Ocean Safety 8 person ISO 9650 Liferaft w/ less than 24hr pack & Hydrostatic Release (Inspected, repacked & new hydrostatic October 2024)  
Dinghy Davits SS tube davits with rope catch, Electric Winch & Dynema lifting lines  
Navigation Lights LED  
Deck Wash Down System Jabsco R4325143 pump port trampoline w/ quick connect port (2021) with 2 50' hoses & bag of quick connectors, PLUS SPARE PUMP

## Electronics & Navigation

Autopilot B&G Autopilot Controls, Lecomble & Schmitt 64240 Hydraulic Pump  
Primary Chart Plotter B&G Zeus 12  
Secondary Chart Plotter B&G Zeus 12  
Primary GPS B&G  
Electronic charts included are Caribbean (2023 update) & Europe (2020 update)  
Radar Garmin Halo 20 (2021)  
Logs Electronic  
Primary VHF Radio B&G H50 at Nav table

Secondary VHF B&G V50 at helm

Compass Plastimo Built in Compass

Stereo and Speakers Fusion MS-RA770 Bluetooth Stereo with Apple Play (2020), 2 Fusion 6" speakers in cockpit, 2 Fusion 6" speakers at flybridge (2021), 2 Bose interior speakers in Salon

EPIRB ACR GlobalFix 406Mhz GPS EPIRB with case & hydrostatic release (2020)

AIS Receiver NAIS 500 (2021)

Deck Lights Bow Trampoline Deck light LED, Blue step & deck lights LED, Flybridge

Overhead twist on bi-color lights LED

Search Lights 12v Handheld Spotlight included (2020)

## Electrical, Power & Plumbing

Direct Current System Voltage 12v

Alternating Power System Voltage 120v

1200AH AGM House Batteries installed January 2025

Batteries Engine (1ea) Optima Blue Top Marine Dual Purpose start battery (750CCA) for each engine plus (Parallel Switch)

Batteries Other Optima Blue Top Marine Dual Purpose start battery (750CCA) Genset Start Battery (2022)

Generator Cummins Onan 11mdkbn 120v Genset, less than 2500 hrs (2024), March Pump, PLUS SPARE FILTERS, IMPELLERS, TSTAT, HOSES, FUEL FILTERS, BELTS, ANODES, FUEL PUMP

Solar Panels 3ea LG375q1c-v6, 375W Solar panels (with solar arch) with 3ea Victron MPPT 150/35 controllers

Inverter Victron Multiplus 12v/120v 3000w Inverter Charger

Battery Charger Cristec Battery Chargers for all batteries

Shore Power Cord 50' 120v shore power cable, new ends (2023)

Battery Monitor Mastervolt battery monitoring system,

Victron Smart Shunt Bluetooth Battery Monitoring

Alternator Factory Yanmar Alternators on Yanmar engines

Water Heater Quick B3 60L original PLUS SPARE ELEMENT

Water System Jabsco Freshwater Pump 32600-0092, 3.5GPM PLUS SPARE PUMP

Air conditioner 4ea Cruise Air Self Contained individual 8,000 BTU units with control panels (3 cabins & salon), 1ea Webasto FCF Platinum 10,000 BTU Port Aft Cabin w/ controls

Heater Yes, Included and same units as listed above for the A/C system

## Engine & Mechanical

Manual Bilge Pumps Manual bilge pumps with handles located in cockpit

Electric Bilge Pumps Primary - Automatic Rule bilge pumps with electric float switch in each bilge

Secondary - Switched Whale Gupper 320 bilge pumps in each bilge  
Steering Type Cable & Hydraulic  
USCG Safety Package Blue code supplies/equipment & Blue code inspected by BVI government & USCG/USVI  
Fire Extinguishers (number and type) 2ea - 10lb Cleanguard ABC fire extinguishers  
4ea - 5lb fire extinguishers  
Automatic fire extinguishers installed in engine compartments (October 2024)  
Emergency Tiller Yes  
Sherwin Williams ablative bottom paint (October 2024)  
Propeller (size, material) Volvo SD 3 blade 18"x16", Aluminum  
Propspeed light coating on both props (2024)  
Sail drive zincs (2024)  
Hull zinc 2023  
Custom steering sheave stainless steel reinforcement + interior fiberglass reinforcement (October 2024)

## Sails & Rigging

Main Mast Factory Mast/Boom, New Sunbrella Teal Doyle Sailbag with Lazyjacks (2022), Forespar lightening dissipater at top of mast (2021)  
Roller Furling for Genoa Facnor 2014 LX+ Roller Furling, Block on soft shackle for alignment of roller furling line to furler drum  
Mainsheet Traveler Yes, New Mainsheet (2023)  
Sail Area white Mainsail - New (non-square top) with battens (2023), White Genoa factory with sun protection skirt. Dynema 12mm halyard (2023)  
Standing Rigging (material, wire/rod, terminal ends) Stranded wire standing rigging, retentioned w/ Factory Bulkhead kit installation (2022)  
Chain Plates (age/material) Chain Plates factory SS  
Mast Winches Electric Winch: Main stbd halyard winch, Harken 60 electric (New gearbox 2023), (Full Service 2023)  
Cockpit Winches Electric Winch: Dingy lift winch is Harken 40 electric (Full Service 2023)  
Other Winches Port jib sheet winch Harken 60 manual, topping lift winch & mainsheet winch are Harken 40 manual (Full Service 2023)  
Bulkhead Lagoon Factory kit installed June 2022 with certification letter from Lagoon.

## Additional Information

Tender Extras: Drydeck installed, Dynema cable lifts, 10lb Plow anchor w/ 10' of 1/2" chain plus 30' of 3/8" line, foot pump, David brand outboard planing fin, Crosstube seat, boarding ladder, 2 oars, 2 fenders, patch kit, 2 gallon gas container PLUS SPARE KILL SWITCH & DRAIN PLUG included.  
1cf combination safe

ROKK wireless phone charger at flybridge (2022)  
Hardwired 12v plug for Dometic cooler behind flybridge backrest (2022)  
Helm wheel with black leather wrap  
12v lights in each engine compartment  
Smoke detector in battery/inverter compartment & in saloon  
Ring Spotlight camera for cockpit 2023  
Yeti 110 Cooler  
12 pair assorted sizes of Aqua Lung fins & 12 masks 2022  
Mesh fin keepers (two 4 pocket holders)  
2ea IRocker SUPs with paddles & electric pump 2023  
1ea IRocker 7' square floating mat & electric pump 2023  
New hatch lids on all cabin hatches & forward v berth hatches 2023  
New sealant on all salon windows 2023  
Electric saltwater head: Quiet Flush (4) with Commodorizer System on each  
Lights, fans & mattress in both bow V berths  
2ea 3 speed fans in salon and 1 in each cabin  
2ea USB plugs & 1ea 120v plug in each cabin  
Additional 110v outlet with two additional USB plugs in port aft cabin  
Galley blinds  
Saloon & cabin shades (factory)  
11ea 18"x18" Decorative indoor / outdoor pillows  
Decorative Indoor / outdoor storage baskets (several)  
Combo shampoo, conditioner & shower gel wall mounted dispenser in each cabin & at sugar  
scoop  
2ea throw rings with 25' floating line (floating light on one ring)  
Dan Bouy with flag  
12ea adult coast guard life jackets (with lights & whistle)  
2ea child coast guard life jackets (with lights & whistle)  
Emergency flag  
Quarantine flag  
Binoculars  
Air horn  
4ea Walkie Talkies  
Orange, red, parachute flares as required by BVI & USVI cruising grounds  
Jacklines set up for entire boat. 3ea 4' dynema tethers with quick release, 3ea 6' dynema  
tethers with quick release for overnight or offshore sailing  
Starlink dish, router & mesh node  
Two Magma SUP/KAYAK rack sets mounted to stantions  
1ea Floating line with noodles for hanging behind the boat  
1ea Two-person kayak - Perception Tribe 13.5 Dapper  
2ea E Searider teardrop bean bags (white)

2ea solar tiki torches

Cockpit mounted SS rod holder storage for 4 rods

2ea Aluminum fishing rod holders mounted aft (1 at each sugar scoop) for trolling

1ea 8 tank rack holder for scuba tanks mounted to stantions

2ea Extra jerrycans (1ea gasoline, 1ea diesel)

Maintenance log with serial numbers/identification for most relevant systems/parts

Spare parts, filters, gaskets, hoses, boat special tools, extra lines, etc.

Spare main water pump, deck wash pump, macerator pump, sink water pump, march pump (for genset) & AC raw water pump, all onboard & in storage

10ea black & yellow Home Depot storage containers (assorted sizes)

Cookware, and 8 place setting of dishes, silverware

10 sets of assorted color dinner napkins, placemats & napkin holders

First Aid Kit My Medic Recon First Aid Kit + Heartstart AED defibrillator (2020)

Image Gallery







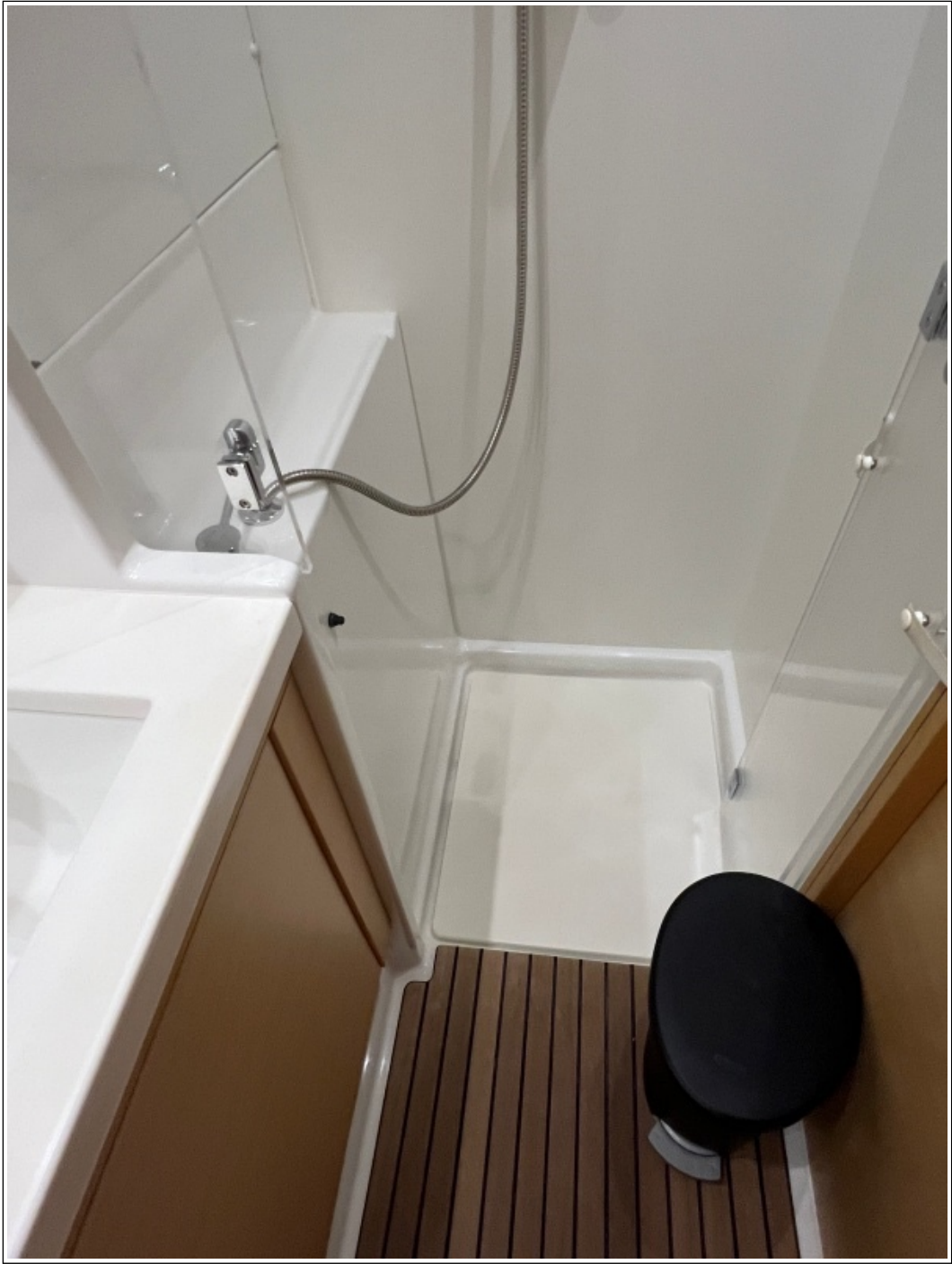










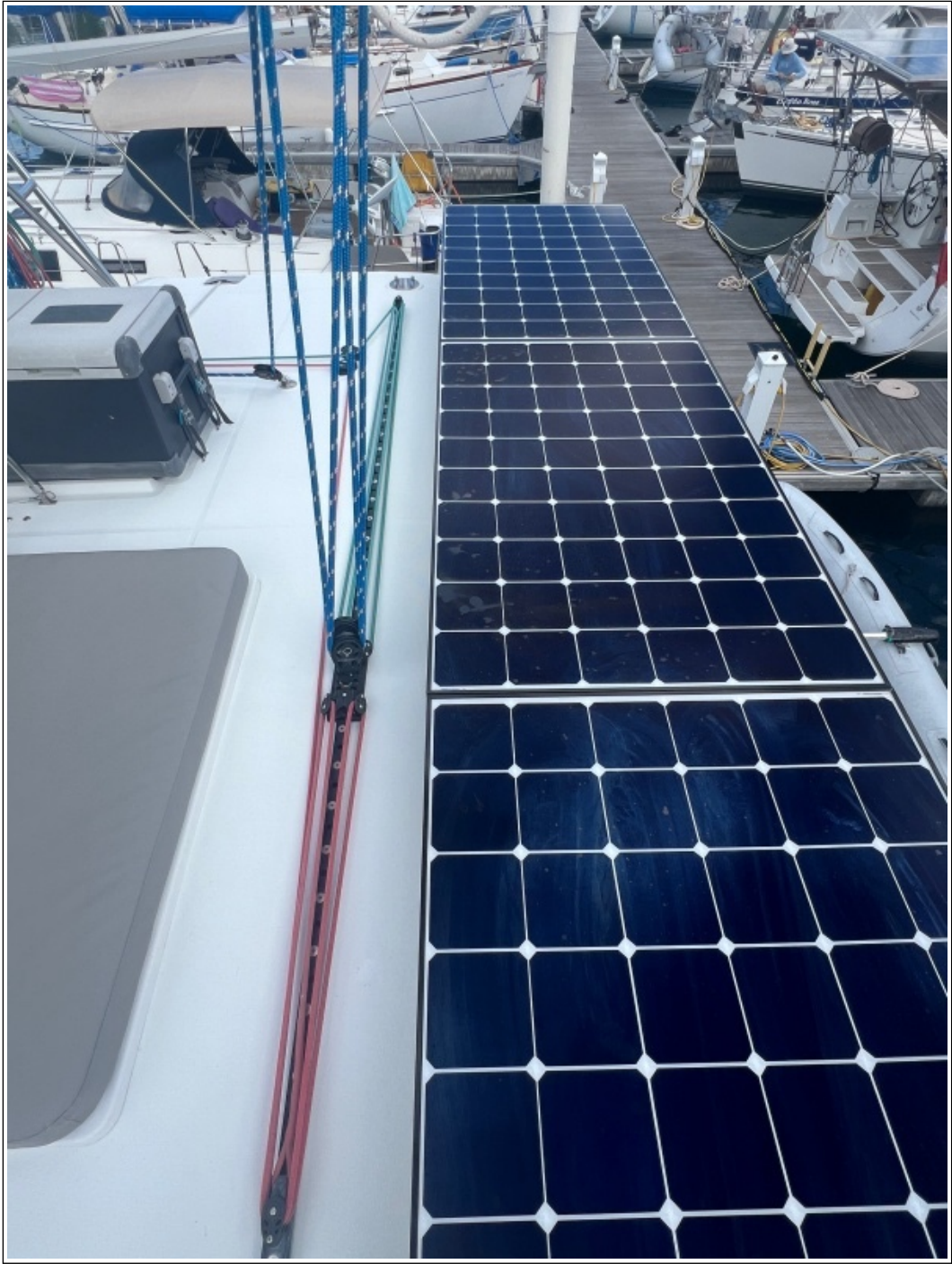












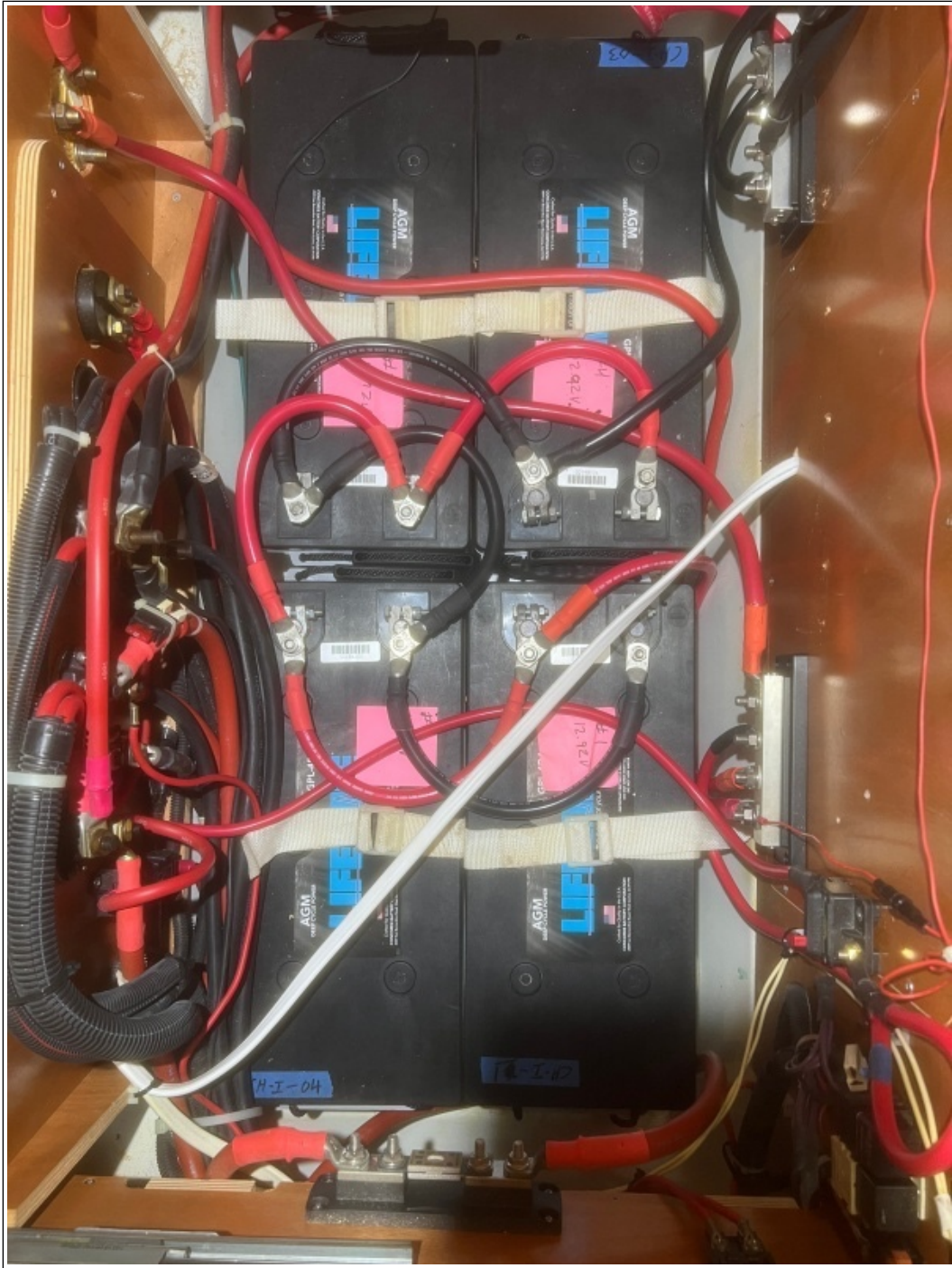












### **Disclaimer**

The Company offers the details of this vessel in good faith but cannot guarantee or warrant the accuracy of this information nor warrant the condition of the vessel. A buyer should instruct his agents, or his surveyors to investigate such details as the buyer desired validated. This vessel is offered subject to prior sale, price change, or withdrawal without notice. Photos may not properly reflect the current condition of the actual vessel offered for sale. In some cases stock photographs may have been used.

THIS VESSEL IS NOT FOR SALE IN US WATER TO USA CITIZENS OR RESIDENTS.

### **Mechanical Disclaimer**

Engine and generator hours are as of the date of the original listing and are a representation of what the listing broker is told by the owner and/or actual reading of the engine hour meters. The broker cannot guarantee the

true hours. It is the responsibility of the purchaser and/or his agent to verify engine hours, warranties implied or otherwise and major overhauls as well as all other representations noted on the listing.

### **Dinghy Disclaimer**

All dinghies are considered separate vessels and should have separate titles and documents. There is no guarantee as to the title of the dinghy on this vessel so Buyer accepts that while he may receive the dinghy included in the transaction, he may not receive the proper title to it.