

2026 FP New 44 EMMA ROSE



## Basic Vessel Summary

<b>Manufacturer:</b>	FOUNTAINE PAJOT
<b>Model:</b>	FP New 44
<b>Model Year:</b>	2026
<b>Year Built:</b>	2025
<b>Type of Yacht:</b>	Sail
<b>Price:</b>	€854,881
<b>Condition:</b>	New
<b>Status:</b>	Sold
<b>Location</b>	En Route to Tortola, BVI Virgin Islands (British)
<b>Manuf. Length:</b>	43' 5" ( 13.23 m)
<b>Maximum Draft:</b>	4.52' ( 1.38 m)
<b>Beam:</b>	24' 40" ( 7.44 m)
<b>No. of Cabins:</b>	4
<b>No. of Heads:</b>	4

<b>Fuel Capacity:</b>	184 g
<b>Water Capacity:</b>	158 g
<b>Weight - Displacement:</b>	16.755 ton (33510 lb)
<b>Hull Material:</b>	Fiberglass Reinforced Plastic- FRP
<b>Hull Configuration:</b>	Catamaran
<b>Engine Manufacturer</b>	YANMAR
<b>Engine Model</b>	4JH57-CE
<b>Engine Year</b>	2026
<b>Engine Horsepower</b>	57
<b>Engine Type</b>	Inboard
<b>Engine Configuration</b>	Twin
<b>Engine Fuel Type</b>	Diesel
<b>Engine Condition</b>	New

### [Boat Description:](#)

Introducing the stunning 2026 Fountaine Pajot 44, built exclusively for charter. This brand-new model is the perfect blend of performance, elegance, and comfort, crafted to impress guests and maximize charter revenue.

With its sleek new lines, wider coachroof, and signature hull design, the FP 44 delivers smooth, balanced sailing and standout style at sea. Inside, the expanded nacelle offers more volume and smart storage, while the open-plan layout connects the galley, saloon, and forward serving hatch, creating the ultimate indoor-outdoor experience.

From the spacious flybridge to the forward lounge and oversized cockpit, every space is designed for relaxation and enjoyment. A favorite among sailors, the proven dual helm and maneuvering system ensures easy handling and a superior sailing experience.

If you're looking to elevate your charter fleet with a yacht that's as beautiful as it is practical, the new Fountaine Pajot 44 is your opportunity .

ONLY Purchase for Charter. Delivery Dec 2025.

## Full Specification

### [Layout & Accommodations](#)

NEW 44 QUATUOR (4 cabins 4 baths)

## Oceanic version

Curtains in cabins

Mooring kit + 6 fenders

CST mainsail full batten

Lazy jack

Electrical windlass 1500 Watts

VHF mast head antenna prewired

Two pulpit seats

Clutche for reefs 2 and 3

Interior 12V outlet

Deck shower (hot water)

Auto. switch for bilge pumps

Lazy bag

Dralon protective cover for wheel

1 Electric winch for mainsail

Interior courtesy lighting

Fusion audio pack Bluetooth 4 Sp.

Pressurized seawater system

Main grid 220V 50HZ or 110V 60HZ

2000W Inverter/charger / 220V 50HZ or 110V 60HZ

## INTERIOR EQUIPMENT

Fitting out port forepeak

Fitting out starboard forepeak

Handrail in staircase

Beds with slatted bases for 4 cabins

## Galley

### HOUSEHOLD APPLIANCES AND COMFORT

12V 90L - 5°C cold Storage (= 23° F)

Cockpit fridge

1 Electric head large bowl (4)

12V fan (6)

Air cond. 50/60Hz main syst. 44-48K BTU

## Deck & Equipment

### SADDLERY

Valancia Charcoal fabric outdoor upholstery

Nature PVC indoor upholstery

## EXTERIOR EQUIPMENT

Bimini for helm station  
Polyester cockpit table  
Outdoor cushions (cockpit + lounge deck)(Incl.Cft)  
Outdoor foredeck cushions  
Rigid front platform  
Protective strip on both transoms  
Additional mooring cleats

## SAFETY

Safety equipment without life raft  
Chain + 25KG Anchor  
MP10 container life raft

## Electronics & Navigation

### ELECTRONIC TV AND HIFI

GARMIN 1 Smart Cruising : Autopilot, VHF, AIS, GPS 8412, 2\*multi GMI20  
Radar + support + wiring

## NAVIGATION

Charter sails  
Antifouling, epoxy primer

## Electrical, Power & Plumbing

### ELECTRICITY AND LIGHTING

Additional electric freshwater pump (Incl. Cft)  
Additional AGM battery 150A  
Interior 12V outlet

## 60HZ OPTIONS

Rub rail  
US standard gas installation  
main grid 110V 60HZ smart elec pack  
11KW 220V 110V 60HZ genset  
Watermaker 180L/h 60HZ  
Second VHF AIS helmstation US channels  
VHF US channels

## Engine & Mechanical

### ENGINES

2 YANMAR 4JH57-CE engines

## Sails & Rigging

Doyle Lazy Bag with Lazy Jacks

1 Electric winch for genoa sheet

Electric davit winch

Image Gallery

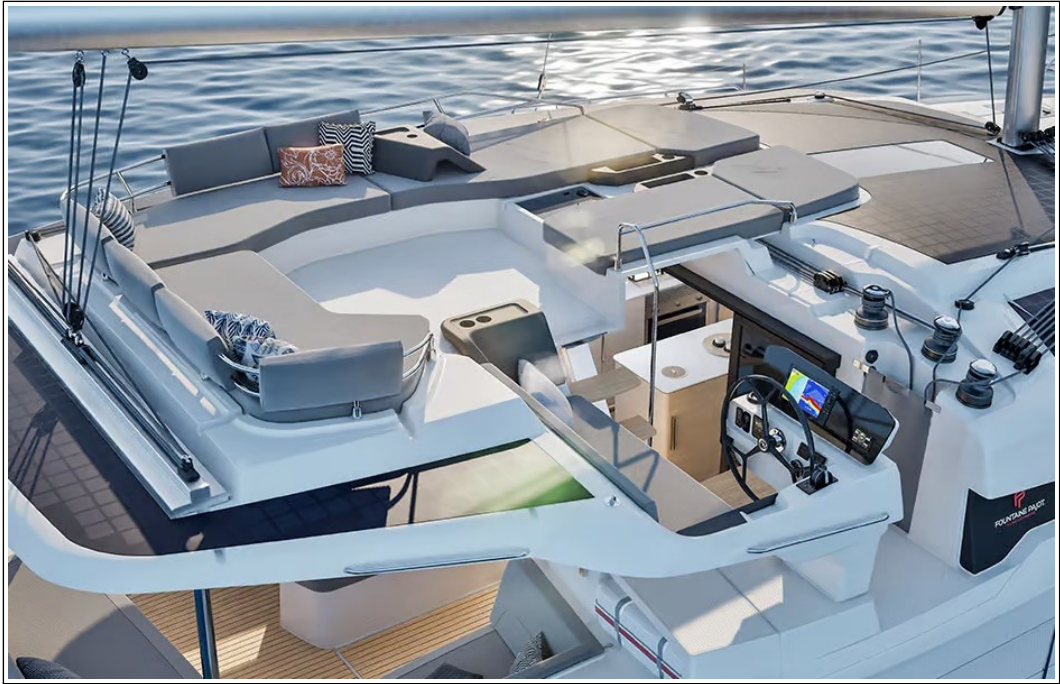
















### **Disclaimer**

The Company offers the details of this vessel in good faith but cannot guarantee or warrant the accuracy of this information nor warrant the condition of the vessel. A buyer should instruct his agents, or his surveyors to investigate such details as the buyer desired validated. This vessel is offered subject to prior sale, price change,

or withdrawal without notice. Photos may not properly reflect the current condition of the actual vessel offered for sale. In some cases stock photographs may have been used.

### **Mechanical Disclaimer**

Engine and generator hours are as of the date of the original listing and are a representation of what the listing broker is told by the owner and/or actual reading of the engine hour meters. The broker cannot guarantee the true hours. It is the responsibility of the purchaser and/or his agent to verify engine hours, warranties implied or otherwise and major overhauls as well as all other representations noted on the listing.

### **Dinghy Disclaimer**

All dinghies are considered separate vessels and should have separate titles and documents. There is no guarantee as to the title of the dinghy on this vessel so Buyer accepts that while he may receive the dinghy included in the transaction, he may not receive the proper title to it.