

2011 Leopard 46 TITAN 46



Basic Vessel Summary

Manufacturer:	LEOPARD
Model:	Leopard 46
Model Year:	2011
Year Built:	2010
Type of Yacht:	Sail
Price:	\$389,000
Condition:	Used
Status:	Catamaran for Sale
Location	Clear Lake Shores Texas (TX)
Manuf. Length:	46' (14.02 m)
Maximum Draft:	4' 4" (1.32 m)
Minimum Draft:	4' 4" (1.32 m)
Beam:	24' 10" (7.57 m)
No. of berths:	4
No. of Cabins:	4

No. of Heads:	4
Electric Circuit:	110 volt
Fuel Capacity:	188 g
Water Capacity:	206 g
Weight - Displacement:	12.103 ton (24206 lb)
Hull Material:	Fiberglass
Hull Configuration:	Catamaran
Engine Manufacturer	Yanmar
Engine Model	4JH5E
Engine Year	2010
Engine Horsepower	54
Engine Hours (Port)	2400
Engine Hours (Starboard)	2400
Engine Type	Inboard
Engine Configuration	Twin
Engine Fuel Type	Diesel
Engine Condition	Used
Does the boat have a generator?	Yes
Generator Model	Northern Lights 9kw
Generator Operating Hours	8566
Does a dinghy come with the boat?	Yes
Dinghy Model	AB
Dinghy Length	12
Dinghy Model Year	2016
Dinghy Outboard Manufacturer	Honda
Dinghy Outboard Horsepower	20

[Boat Description:](#)

TITAN 46 is US Duty Paid, so she is not subject to the new tariffs or import duty. The owner will consider trade-in of a tailorable monohull sailboat or powerboat (not a center console fishing boat) against the purchase price of TITAN 46.

TITAN 46 is a 2011 Leopard 46 sailing catamaran for sale, featuring 4 spacious cabins and 4 heads, professionally outfitted for bluewater cruising. This owner-maintained yacht has never been in a hurricane and is fully equipped to sail around the world.

TITAN 46 has been extensively upgraded with 935 watts of solar power, lithium-ion batteries, a Victron 3000W inverter/charger, a Spectra Catalina 340z 12V watermaker, and both Raymarine and Garmin navigation systems.

She includes a new 12" Garmin chartplotter at the helm, Raymarine Quantum radar, Raymarine autopilot, and AIS. Sailing performance is enhanced with Quantum sails, an asymmetrical spinnaker with sock, a new mainsail (2022), and an electric winch at the helm.

Rigging and systems have been carefully set up for offshore passagemaking by her experienced sailor-owner. TITAN 46 also comes with a Rocna 73lb anchor with 200 ft of new chain, Delta secondary anchor, Flex Fold 3-blade props (with backups), updated cockpit and salon cushions, and custom helm and cockpit enclosures.

The yacht has just had fresh bottom paint (January 2023) with an epoxy barrier coat and Prospeed on saildrives and props. Engines and generator are fully serviced and running perfectly. This Leopard 46 is set up with a 110V North American electrical system and includes a 12' AB dinghy with 20hp Honda outboard, and a certified 12-person PLASTIMO life raft.

TITAN 46 is an ideal catamaran for liveaboard sailors, cruising families, or charter-ready buyers looking for a well-equipped and reliable bluewater yacht.

Full Specification

Layout & Accommodations

4-cabin, 4-head layout. All electric heads
New salon cushions and aft cockpit cushions

Galley

3-burner propane stove with oven, microwave, 2 refrigerators/freezers
Extra 110v/12v refrigerator/freezer in cabin

Deck & Equipment

New salon cushions and aft cockpit cushions
Full helm enclosure
Custom cockpit enclosure
Portable washer/dryer
Magma grill
Custom folding table in cockpit
Fish cleaning table
Main halyard redirected to helm
Electric winch at helm
Rocna 73lb primary anchor with 200 ft new chain - Delta secondary anchor

Electronics & Navigation

Raymarine electronics with Quantum Raymarine radar

New 12" Garmin chartplotter with AIS (also at helm)

New Raymarine autopilot

TV

VHF

Electrical, Power & Plumbing

935 watts solar with 3000 watt Victron inverter charger

Northern Lights 9kw generator (8566 hrs)

Engine & Mechanical

2x 2010 Yanmar 4JH5E

Flex Fold 3 blade props (plus 3-blade fixed backup)

Sails & Rigging

Asymmetrical spinnaker with Sock

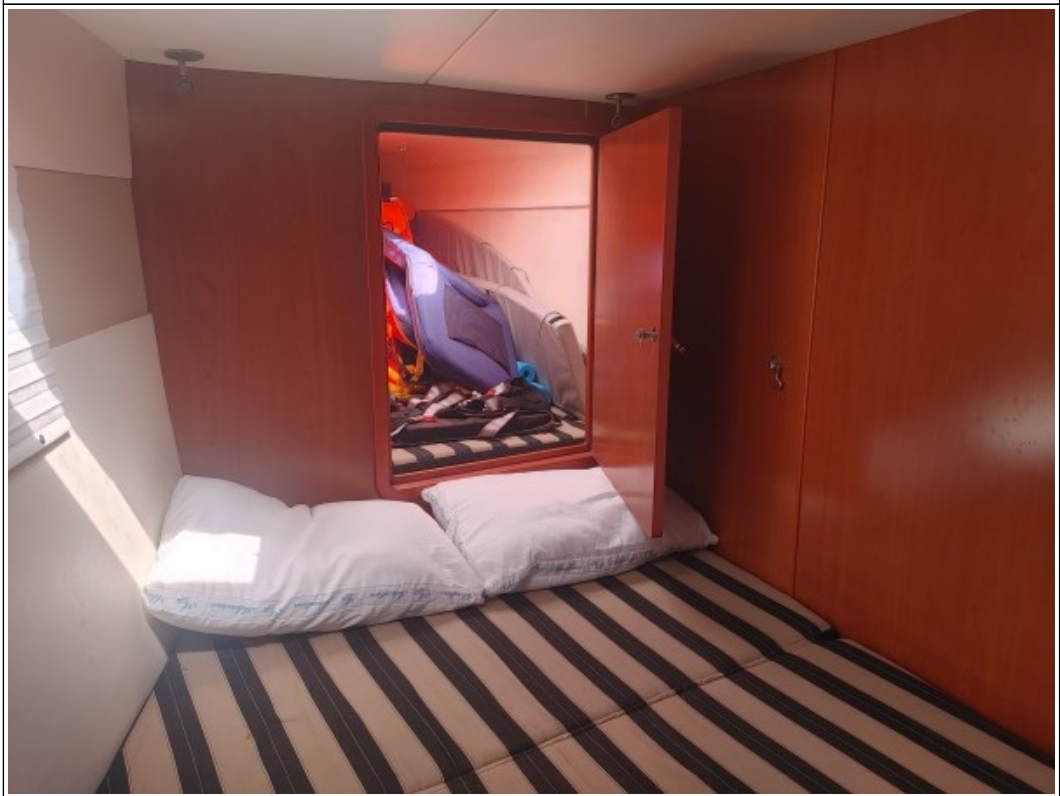
Quantum sails mainsail (new 2022)

Additional Information

Spectra Catalina 340z 12v watermaker

Image Gallery









































Disclaimer

The Company offers the details of this vessel in good faith but cannot guarantee or warrant the accuracy of this information nor warrant the condition of the vessel. A buyer should instruct his agents, or his surveyors to investigate such details as the buyer desired validated. This vessel is offered subject to prior sale, price change, or withdrawal without notice. Photos may not properly reflect the current condition of the actual vessel offered for sale. In some cases stock photographs may have been used.

Mechanical Disclaimer

Engine and generator hours are as of the date of the original listing and are a representation of what the listing broker is told by the owner and/or actual reading of the engine hour meters. The broker cannot guarantee the true hours. It is the responsibility of the purchaser and/or his agent to verify engine hours, warranties implied or otherwise and major overhauls as well as all other representations noted on the listing.

Dinghy Disclaimer

All dinghies are considered separate vessels and should have separate titles and documents. There is no guarantee as to the title of the dinghy on this vessel so Buyer accepts that while he may receive the dinghy included in the transaction, he may not receive the proper title to it.