

2025 Sunreef 50 BROCHURE - SUNREEF 50



Basic Vessel Summary

| | |
|----------------------------|------------------------------------|
| Manufacturer: | SUNREEF |
| Model: | Sunreef 50 |
| Model Year: | 2025 |
| Type of Yacht: | Sail |
| Price: | Price on Application |
| Condition: | Brochure |
| Status: | Catamaran for Sale |
| Location | Poland |
| Manuf. Length: | 50' (15.24 m) |
| Beam: | 30' (9.14 m) |
| Fuel Capacity: | 264 g |
| Water Capacity: | 211 g |
| Hull Material: | Fiberglass Reinforced Plastic- FRP |
| Hull Configuration: | Catamaran |
| Engine Type | Electric |

Engine Condition

New

Boat Description:

The Sunreef 50 Electric is a revolutionary luxury sailing catamaran that redefines sustainable yachting without compromising performance or comfort.

Designed for eco-conscious sailors, this state-of-the-art vessel is equipped with a cutting-edge electric propulsion system, ensuring silent cruising and reduced environmental impact. With an elegant and modern design, the Sunreef 50 offers a spacious and customizable layout, providing exceptional comfort for long-range voyages or relaxing getaways.

The expansive deck space includes a generous flybridge, a large aft cockpit, and a forward lounge area, creating seamless indoor-outdoor living. The salon is bathed in natural light, featuring high-end finishes and a well-appointed galley for an unparalleled onboard experience. The luxurious cabins provide privacy and relaxation, making extended cruising a pleasure.

The innovative solar panel system integrated into the superstructure enhances energy efficiency, supporting a sustainable sailing lifestyle. Whether for private ownership or a charter business, the Sunreef 50 Electric delivers an exceptional balance of innovation, luxury, and environmental responsibility.

Experience the future of yachting with the Sunreef 50 Electric, a game-changer in the world of sustainable sailing.

Contact us today to learn more about this remarkable catamaran and embark on a new era of eco-friendly exploration.

Full Specification

Layout & Accommodations

The Sunreef 50 has 2 version Eco Version or Classic Version.

The yacht offers a spacious living area of 167m², accommodating up to 10 guests.

It includes comfortable crew quarters, ensuring a pleasant experience for both guests and crew.

Galley

Specific details about the galley are not provided in the available information.

Deck & Equipment

The Sunreef 50 Electric features expansive alfresco relaxation spaces, including a generous flybridge, large aft cockpit, and forward lounge area, creating seamless indoor-outdoor living.

Electronics & Navigation

Specific details about the electronics and navigation systems are not provided in the available information.

Electrical, Power & Plumbing

Features an innovative solar panel system integrated into the superstructure, enhancing energy efficiency and supporting a sustainable sailing lifestyle.

Engine & Mechanical

The Sunreef 50 Electric is powered by twin electric engines, offering a sustainable and quiet propulsion system.

Additional Information

The yacht's design emphasizes easy handling and is tailored for exclusive getaways, combining luxury with eco-friendly technology.

Image Gallery





















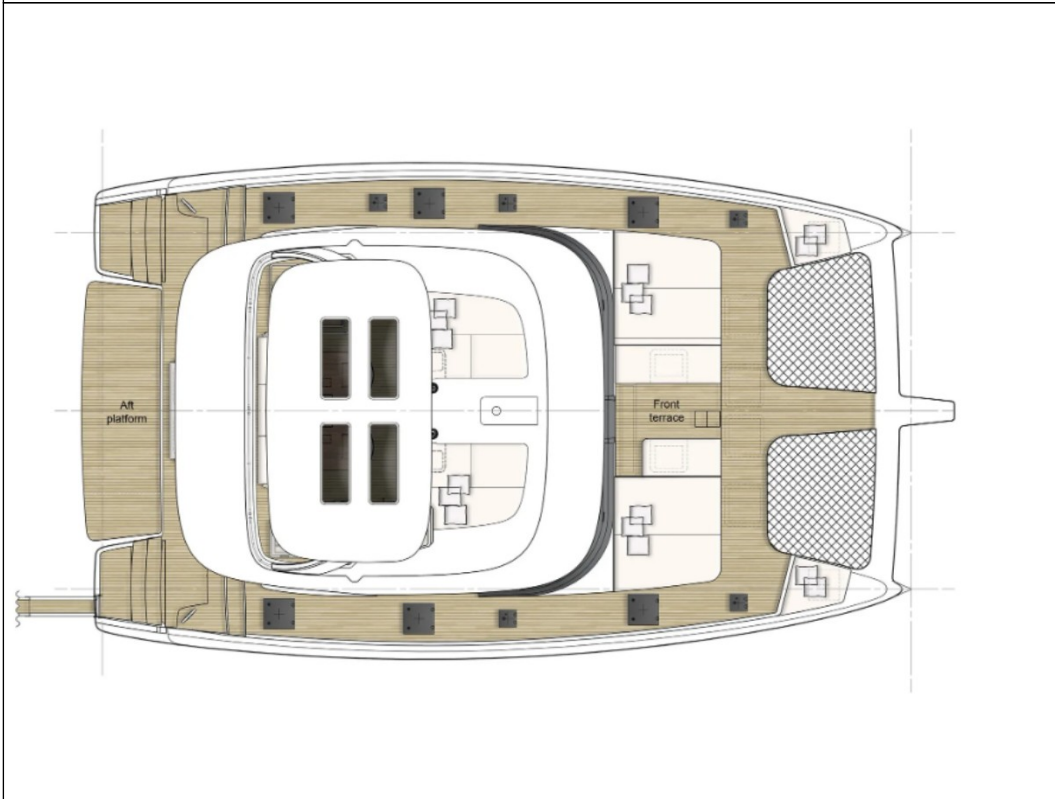


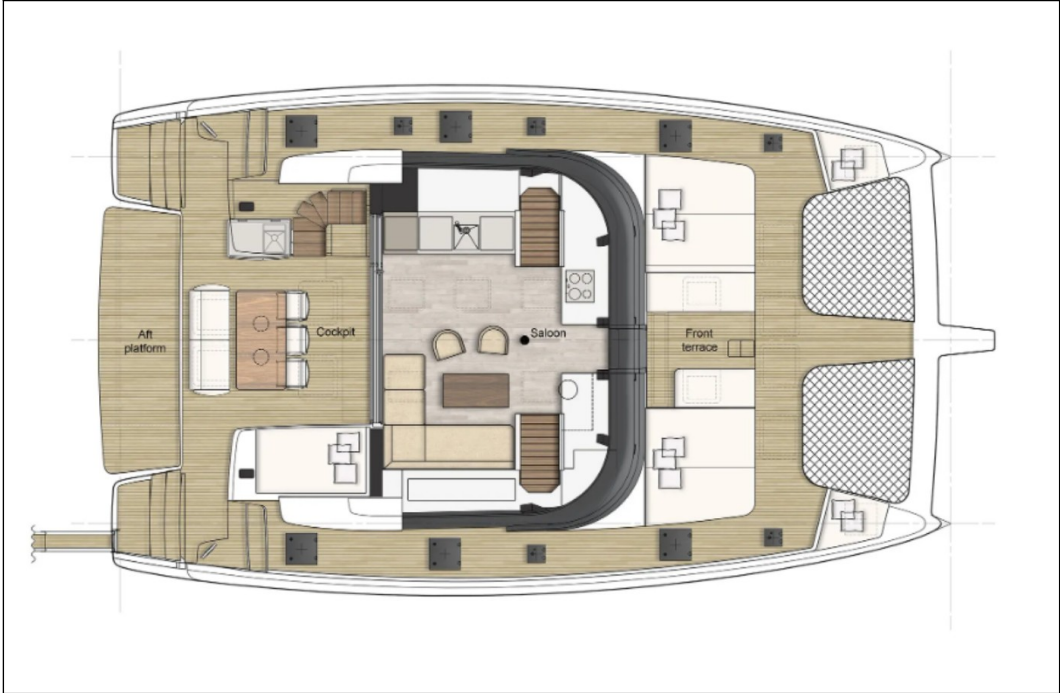
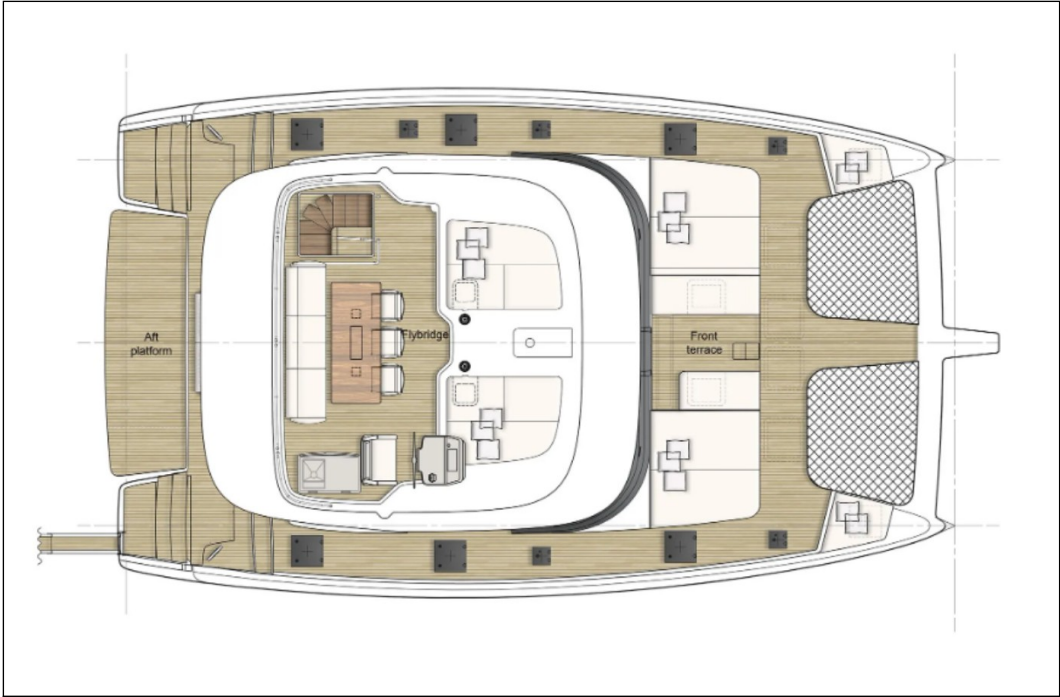


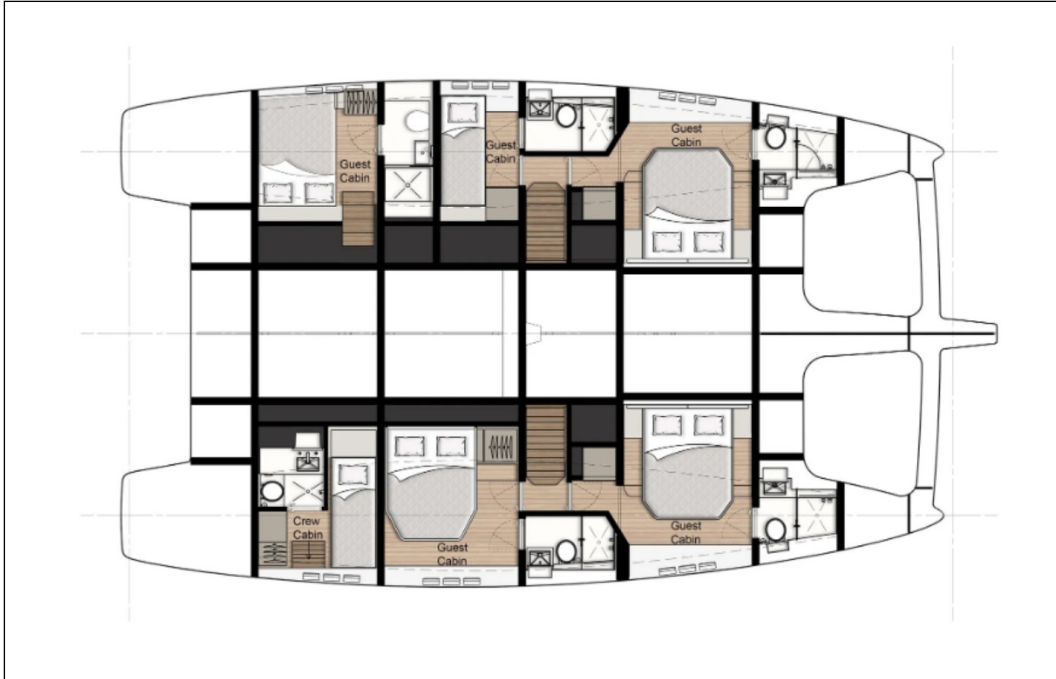












Disclaimer

The Company offers the details of this vessel in good faith but cannot guarantee or warrant the accuracy of this information nor warrant the condition of the vessel. A buyer should instruct his agents, or his surveyors to investigate such details as the buyer desired validated. This vessel is offered subject to prior sale, price change, or withdrawal without notice. Photos may not properly reflect the current condition of the actual vessel offered for sale. In some cases stock photographs may have been used.

Mechanical Disclaimer

Engine and generator hours are as of the date of the original listing and are a representation of what the listing broker is told by the owner and/or actual reading of the engine hour meters. The broker cannot guarantee the true hours. It is the responsibility of the purchaser and/or his agent to verify engine hours, warranties implied or otherwise and major overhauls as well as all other representations noted on the listing.

Dinghy Disclaimer

All dinghies are considered separate vessels and should have separate titles and documents. There is no guarantee as to the title of the dinghy on this vessel so Buyer accepts that while he may receive the dinghy included in the transaction, he may not receive the proper title to it.