

2008 FP Salina 48 SUNBELIEVABLE



Basic Vessel Summary

Manufacturer:	FOUNTAINE PAJOT
Model:	FP Salina 48
Model Year:	2008
Year Built:	2008
Type of Yacht:	Sail
Price:	\$475,000
Condition:	Used
Status:	Sold
Location	Marathon Florida (FL)
Manuf. Length:	46' 11" (14.30 m)
Maximum Draft:	3' 7" (1.09 m)
Beam:	25' 7" (7.80 m)
No. of Cabins:	4
No. of Heads:	4
Electric Circuit:	110 volt

Fuel Capacity:	127 g
Water Capacity:	198 g
Hull Material:	Fiberglass
Hull Configuration:	Catamaran
Engine Manufacturer	VOLVO PENTA
Engine Model	D2-55E
Engine Year	2008
Engine Horsepower	55
Engine Hours (Port)	1550
Engine Hours (Starboard)	1550
Engine Type	Inboard
Engine Configuration	Twin
Engine Fuel Type	Diesel
Engine Condition	Used
Does the boat have a generator?	Yes
Generator Model	Cummins ONAN
Generator Operating Hours	435
Generator Horsepower	11,500
Does a dinghy come with the boat?	Yes
Dinghy Model	West Marine RIB 350 Hypalon
Dinghy Length	11.5
Dinghy Model Year	2021
Dinghy Outboard Manufacturer	Tohatsu
Dinghy Outboard Horsepower	30
Dinghy Outboard Year	2023

Boat Description:

The 2008 Fountaine Pajot Salina 48, SUNBELIEVABLE, is the most pristine boat of its age on the market. Truly like stepping into a time machine and seeing her at a boat show. She has only had two owners, both of whom were avid sailors and meticulous about maintenance. She has never been chartered or been in a hurricane.

She endured a power surge, most likely a proximity lightning strike, in October of 2024 which damaged much of her electronics. The entire electrical system has been professionally inspected, and all of the electronic equipment has been replaced, down to her refrigerators. The owner was highly involved in overseeing the refurbishment of the vessel and has gone above-and-beyond in making sure that SUNBELIEVABLE is in as close to perfect condition as possible before putting her on the market. This includes reaching into his own pocket to have the bottom painted, saildrives serviced, any gelcoat blisters repaired.

She is a blue-water-ready boat with a watermaker, StarLink, new solar panels, and all new navigation equipment including radar. She is rigged with a bow sprit and winches for her asymmetrical spinnaker for increased downwind performance.

The Fountaine Pajot Salina 48 is the predecessor to the Saona 47 and the Tanna 47. This lineage has been touted as the best open-water sailing catamarans of any production range. She is easily single-handed, with all lines run back to the distinctive split helm of Fountaine Pajot.

SUNBELIEVABLE is located in Marathon, FL, with a full-time caretaker, so she is available to see at any time. Her highly sought-after dock space at Skipjack Marine is transferable to the new owner.

Full Specification

Layout & Accommodations

4 cabin, 4 head version with an extra daybed to port.

All electric heads

Semi-dry heads with shower curtain between shower and toilet areas

Galley

3-burner gas stove

Gas Oven

Ice maker

2 refrigerators/freezers

Double sink

Deck & Equipment

Sunbrella salon window covers

Mesh see-through window covers for salon

Rear cockpit enclosure in Sunbrella

Magma Catalina grill permanent mount with Sunbrella cover

Facnor LS200 furling drum and foil on the forestay.

Bowsprit with downwind sail rigging

5 x Harken winches (1x power at helm ST46, 2x manual at helm ST53, 2x manual aft ST44 for downwind sail)

Electronics & Navigation

Nav station has Axiom 12 and 7, Garmin GMI20, Icom MA510TR Class B AIS transponder, Icom MA424G VHF with GPS

Helm has Axiom 9, Garmin GMI20, Raymarine wind indicator and Raymarine Evolution autopilot

Raymarine Quantum 2 Doppler radar

All networked together, radar, AIS, autopilot display on all MFDs

VHF antenna atop mast

Electrical, Power & Plumbing

North American standard 60hz 110/240 volt

ONAN 11.5 KWA Generator – 431 hrs

Solar panels

8 lifeline, AGM 6 V batteries (wired 12v)

All LED nav lights

Salon lights all bi-color blue/white LED

Staterooms have LED dimmable reading lights with blue night light

All stateroom overhead and head lights are LED

Reverse cycle air conditioning throughout

Submersible raw water pump for chiller

Salon smart TV

FUSION New Model stereo system in/out

Starlink mobile, dish, router, wiring and mounts

EPIRB ACR Global Fix

Engine & Mechanical

2 x Volvo Penta D2-55E

Starboard: ~1550 hrs - Port: ~1550 hrs

Total power 55 HP x 2

Sail drives 130S-B x2

3 blade folding props,

Sails & Rigging

Fractional Sloop

Air draft 68.90 ft

Sail area fore 581.25 sq. ft

Sail area main 818 sq. ft

All standing and running rigging, replaced in the last 2–3 years

Main sail bag

North Sails Genoa, 3DI Ocean in January 2023

Facnor LS200 furling drum and foil on the forestay.

Bowsprit with downwind sail rigging

Gennaker with roller furler and sheets, stowed, recently serviced

5 x Harken winches (1x power at helm ST46, 2x manual at helm ST53, 2x manual aft ST44 for downwind sail)

Additional Information

NEW 2025

Bottom paint/Zincs

NEW propeller bushings

Both saildrives serviced

Any/All blisters repaired

Complete wiring harness inspected - repaired/replaced where needed

NEW Anchor light/wiring

NEW VHF antenna/coax

NEW Raymarine anemometer/wiring

NEW Mast speaker/wiring

NEW Steaming light/Deck light + wiring

NEW Running lights - Bow and Stern

NEW 4x 100 watt solar panels

NEW Victron 30 amp charge controller

NEW Axiom 9 inch Raymarine MFA

NEW Axiom 12 inch Raymarine MFA

NEW Axiom 10 Raymarine MFA

NEW 3x multi-function displays Garmin GMI 20

NEW Raymarine Auto pilot (everything but ram)

NEW Volvo Engine computers

NEW Volvo EDC controls

NEW Bilge pumps/float switches - ALL

All NEW Led Cabin + Salon lighting

NEW Icom AIS/splitter/GPS

Fwd Fridge NEW cooling system

Aft Fridge/Freezer NEW

NEW Faucets in all heads

NEW Victron inverter/charger 3000 wat multiplus

Victron battery monitor

NEW AC units Port FWA + AFT Cabins

Chiller unit STBD Cabine + Saloon

NEW Fuson Stereo Speakers/amp

NEW Raymarine Radar/wiring - Doppler

NEW Cabin fans

Generator serviced – New motherboard

NEW Generator start battery

NEW Generator control panel

NEW Port engine start battery

Engines serviced Including heat exchangers + SS Injection Elbows

Recently replaced house battery bank w/ new Lifeline AGM (8 x 6 volt-220 amp/hr)

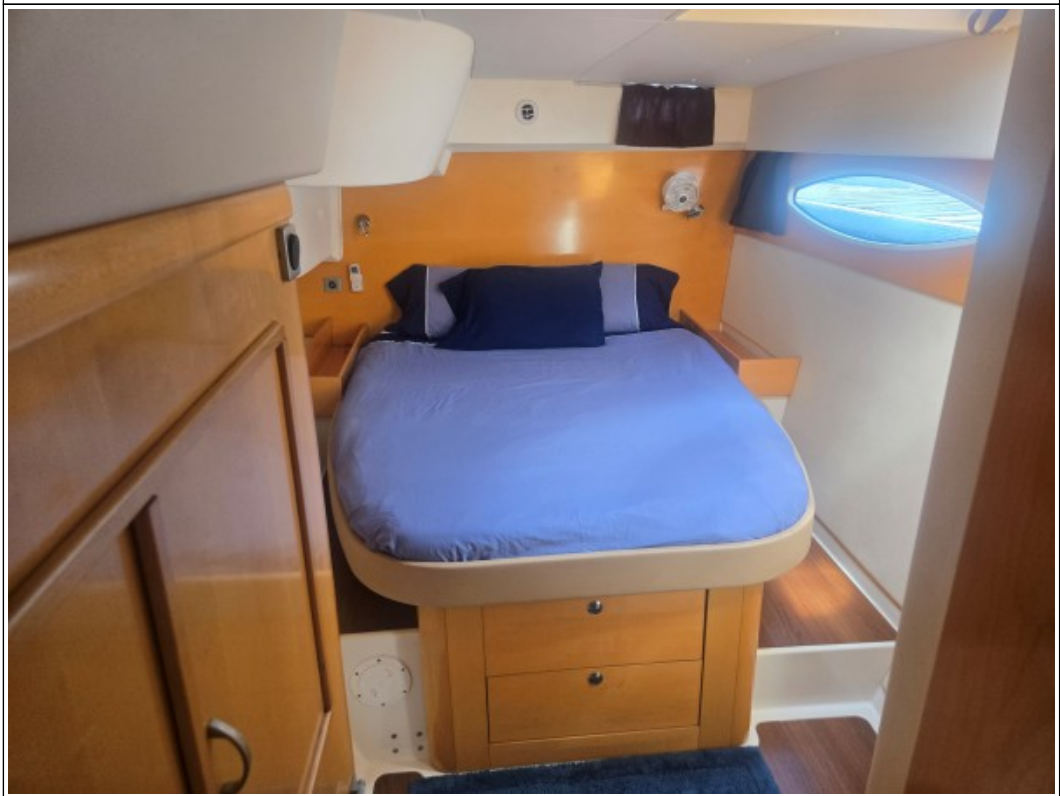
Image Gallery























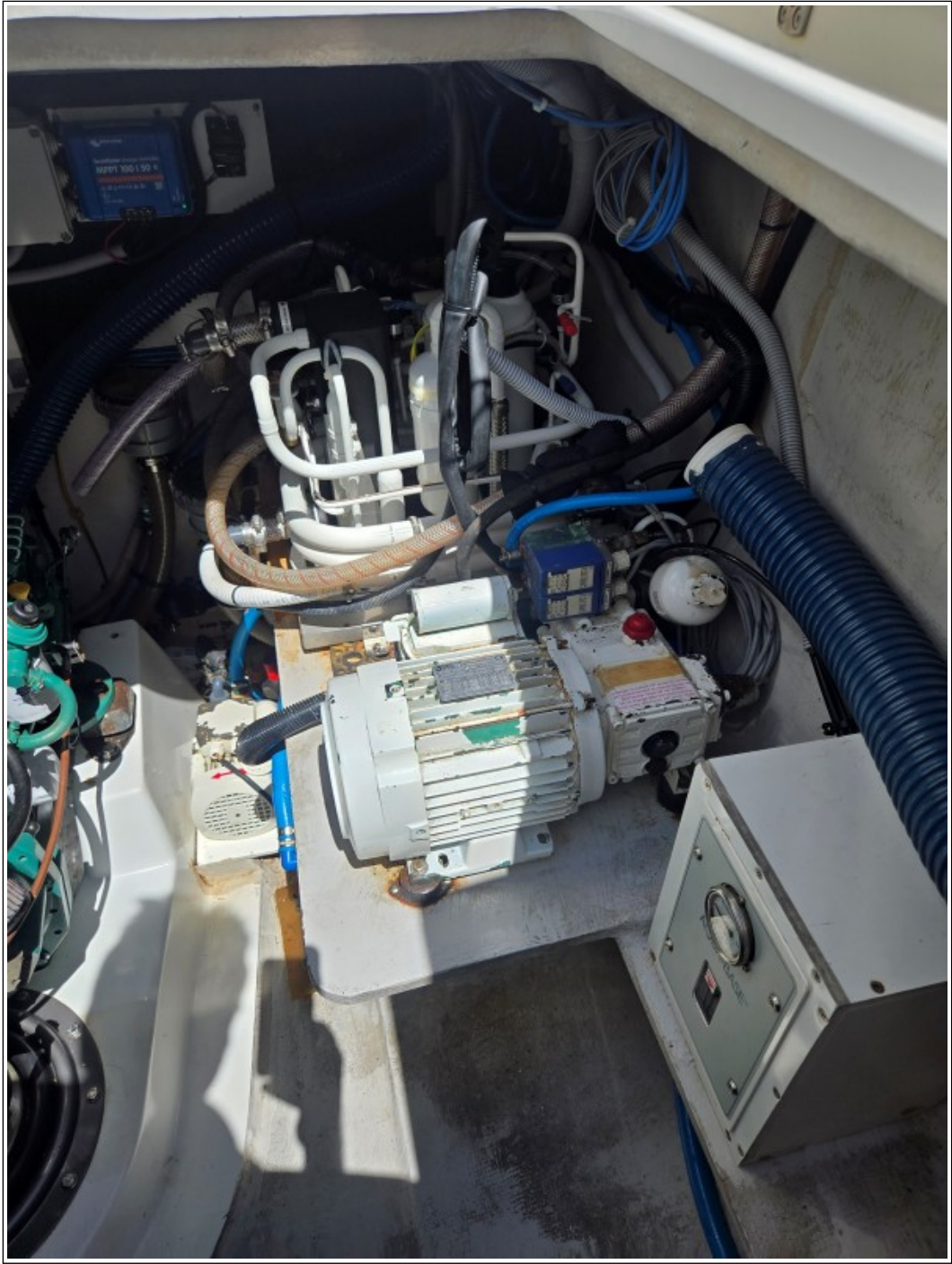


















Disclaimer

The Company offers the details of this vessel in good faith but cannot guarantee or warrant the accuracy of this information nor warrant the condition of the vessel. A buyer should instruct his agents, or his surveyors to investigate such details as the buyer desired validated. This vessel is offered subject to prior sale, price change, or withdrawal without notice. Photos may not properly reflect the current condition of the actual vessel offered for sale. In some cases stock photographs may have been used.

Mechanical Disclaimer

Engine and generator hours are as of the date of the original listing and are a representation of what the listing broker is told by the owner and/or actual reading of the engine hour meters. The broker cannot guarantee the true hours. It is the responsibility of the purchaser and/or his agent to verify engine hours, warranties implied or otherwise and major overhauls as well as all other representations noted on the listing.

Dinghy Disclaimer

All dinghies are considered separate vessels and should have separate titles and documents. There is no guarantee as to the title of the dinghy on this vessel so Buyer accepts that while he may receive the dinghy included in the transaction, he may not receive the proper title to it.