

2014 Leopard 39 LAZY BOAT



Basic Vessel Summary

Manufacturer:	ROBERTSON & CAINE
Model:	Leopard 39
Model Year:	2014
Year Built:	2014
Type of Yacht:	Sail
Price:	\$365,000
Condition:	Used
Status:	Sold
Location	Miami Florida (FL)
Manuf. Length:	39' 6" (12.04 m)
Maximum Draft:	3' 5" (1.04 m)
Beam:	19' 9" (6.02 m)
LWL:	36' (10.97 m)
No. of berths:	6
No. of Cabins:	3
No. of Heads:	2
Fuel Capacity:	92 g
Water Capacity:	211 g
Holding tank:	2
Weight - Displacement:	10.06 ton (20120 lb)
Hull Material:	Fiberglass Reinforced Plastic- FRP
Hull Configuration:	Catamaran
Boat Description:	If you are looking for a sub 40' catamaran in like new condition, look no further.
Engine Manufacturer	Yanmar
Engine Model	3YM30C

Engine Year	2014
Engine Horsepower	29
Engine Hours (Port)	10
Engine Hours (Starboard)	60
Engine Type	Inboard
Engine Configuration	Dual
Engine Fuel Type	Diesel
Does the boat have a generator?	No
Does a dinghy come with the boat?	Yes
Dinghy Model	AB10
Dinghy Length	10
Dinghy Model Year	2014
Dinghy Outboard Manufacturer	Yamaha
Dinghy Outboard Horsepower	15

Full Specification

Layout & Accommodations

NO OF BERTHS: 6

DOUBLES: 3

NO. OF CABINS: 3 +single berth in port bow with light

NO. HEADS: (2) Both oversized bowls, electric fresh water flush x 2

MAKE: PAR Brydon

HANDBASIN: (2) w/ corian tops

SHOWER: (2) plus transom shower with hot / cold water

UPHOLSTERY/COLOUR SCHEME: Beige leather like upholstery in salon

INTERIOR CONSTRUCTION/WOOD TYPE: Cherrywood laminate w/ solid rim. Black Corian countertops.

WHICH LAYOUT VERSION: 3 Cabin "Owners"

Ventilation fans in all cabins and salon

Study desk in Owner's hull

Hanging lockers in all cabins

Huge storage under all berths

LED reading lights in all cabins

LED lights in salon

Galley

COOKER TYPE: Force 10

NO OF BURNERS: 2

OVEN: Yes, w/ Broiler

GRILL: Yes

FUEL: Propane, 2 bottles 10Lbs

FRIDGE&FREEZER: Vitrifrigo 2 drawer front opening 56 GI / 212L, 12V

SINK: (1) Double basin in galley

Deck & Equipment

GROUND TACKLE:

PRIMARY ANCHOR: Delta 45Lbs with 165' of chain

WINDLASS: Quick Aleph 1000W with handheld remote control

GENERAL EQUIPMENT:

FIRE FIGHTING EQUIPMENT: Yes, fire extinguishers throughout vessel.

BILGE PUMPS: 4 x electric, 2 x manual

SAFETY EQUIPMENT: 8x Type 2 USCG life jackets

LIFE RAFT: Viking 8-man

NAVIGATION LIGHTS: Yes

GUARDWIRES/PULPIT/PUSHPIT: Yes

RADIO/ CD: SONY

Polyplanar Platinum 2-Way Speakers (2) 7.5" in salon and in cockpit x 2

DAVITS: Electric davits incorporated in hardtop

DINGHY and outboard: 2014 AB10', Yamaha 15 HP outboard 4 stroke

SWIMMING LADDER: Yes

WARPS: (6)

FENDERS: (6)

BOATHOOK: (1)

Emergency Tiller: Yes

19" TV in salon

Mosquito screens portholes and hatches

Electronics & Navigation

COMPASS: Plastimo

ECHOSOUNDER: Raymarine Tridata ST 60+

SPEED: Raymarine Tridata ST 60+

WIND: Raymarine ST 60

VHF: Ray 55 VHF at nav station

AUTO PILOT: Raytheon ST6002

Raymarine e7Chartplotter at helm

CHARTS: Chart kits for US east coast / Caribbean

Electrical, Power & Plumbing

ELECTRICAL SYSTEMS:

VOLTAGE: 12V/110V

NO OF BATTERIES: (5) 3 house & 2 engine (AGM)

CAPACITY: 180Amp DF4D house/DF27D each engine

MAKE: Lifeline

METHOD OF CHARGING: Alternator, shore-charger, solar panels

GENERATOR: NONE

BATTERY CHARGER: Sentry 60A

ALTERNATOR: 60A / h on each engine

SOLAR PANELS: 2 x 70W Solar Panels

SHORE POWER: 2 x 30 Amp and 2 x 50' cables

AIRCONDITIONING: 2 x cruise air 10,000 BTU revers cycle

TANKAGE and WATER SYSTEMS:

NO OF FUEL TANKS: 2

MATERIAL: Aluminum

CAPACITY OF FUEL TANKS:

LITERS: 350 / GALLONS: 92

SEPARATE TANK FOR GENERATOR 20 GL

NO OF WATER TANKS: 2

MATERIAL: Roto-molded Plastic

CAPACITY OF WATER TANKS: 2

LITERS: 800 / GALLONS: 211

HOLDING TANKS: 2 x 13 GI /100L

PRESSURIZED: Fresh water with accumulator tank

WATER HEATING SYSTEM: Engine and shore side

Stern shower

Engine & Mechanical

NO OF ENGINES: 2

MAKE/AGE: Yanmar

MODEL: 3YM30C

HP: (2) x 29

FUEL: Diesel

NO. OF CYLINDERS: 3 each

COOLING SYSTEM: Heat exchanger

LAST SERVICED: October 2014

HOURS RUN/DATE: 10 port / 60 starboard (12/14)

TYPE OF GEAR BOX(S): Sail Drives
TYPE OF CONTROLS: Morse
TYPE OF PROP: Standard fixed props

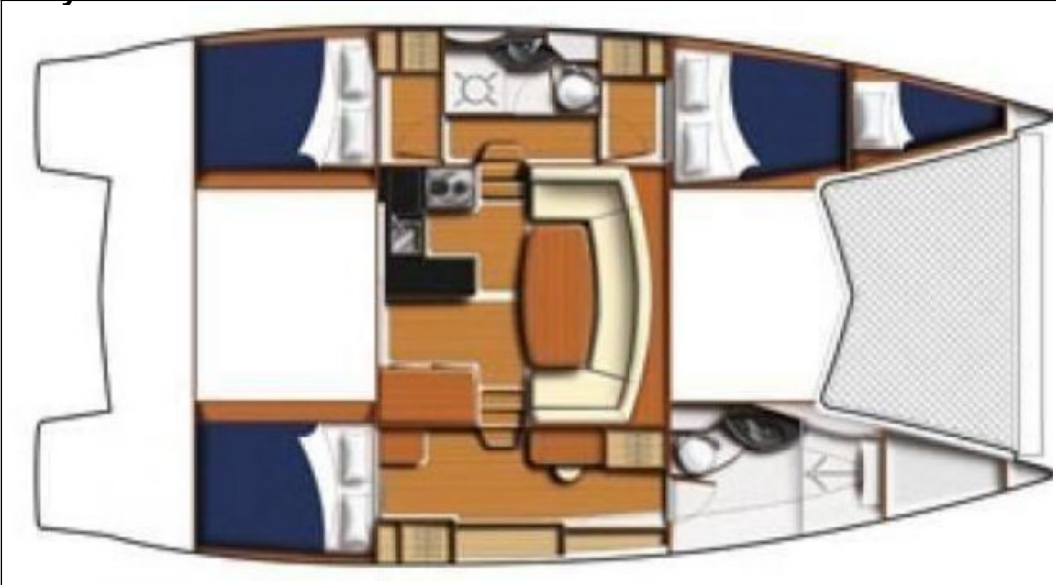
Sails & Rigging

TYPE: Sloop Rig
SPAR MAKER: Sparcraft
SPAR MATERIAL: Aluminum
STANDING RIGGING MATERIAL: Stainless steel wire
RUNNING RIGGING MATERIAL: Cored braided line
MAINSAIL REEFING: Slab reefing
HEADSAIL ROLLER FURLING: Z Spar genoa furler
Main halyard leads to starboard winch for cockpit control
OTHER: Spare halyard
ICW friendly rig 63'
TYPE: Main with Antal system, fully battened
TYPE: Genoa
TYPE: Cradle Bag / Stack pack in blue with logo
GENOA / Mainsheet WINCHES AT HELM: (2)
MAKE: Harken 44 ST, one is electric
HALYARD WINCHES AT MAST: (2)
MAKE: Harken 40 CST
Mainsheet Traveler WINCH: (1)
MAKE: Harken 20 ST

Additional Information

HULL: Composite Glass Reinforced Plastic (GRP) Sandwich with Balsa core
DECK MATERIAL: Textured G.R.P.
STEERING SYSTEM: Edson wheel
RUDDER TYPE: Spade
KEEL TYPE: Multihull
BOTTOM PAINT: Jotun

Image Gallery





























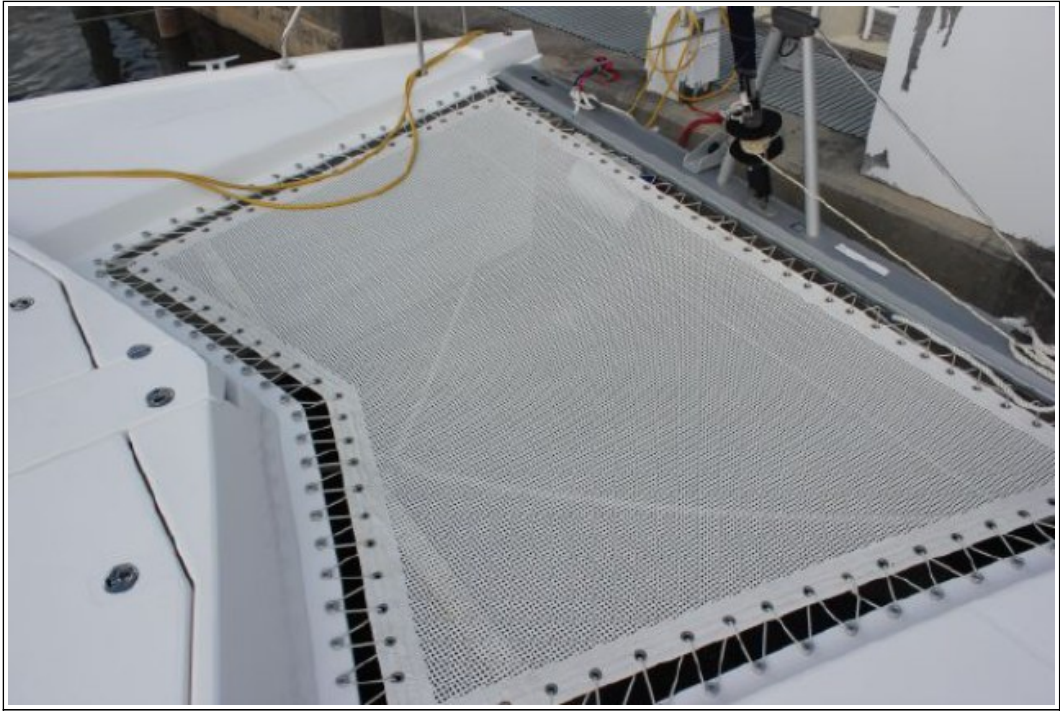


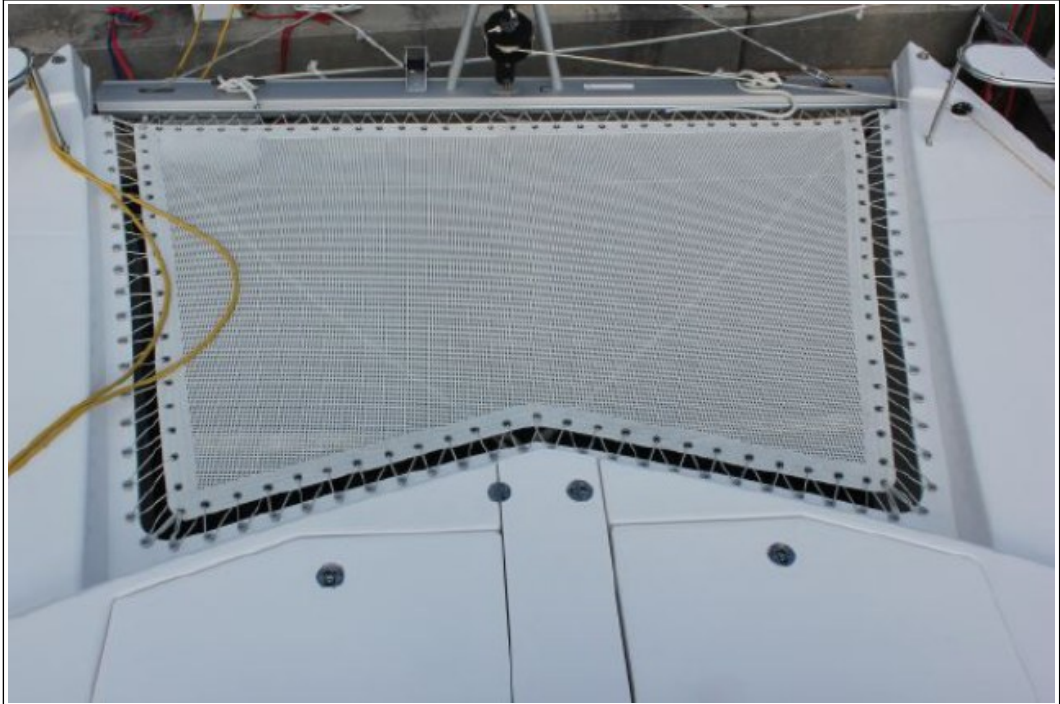
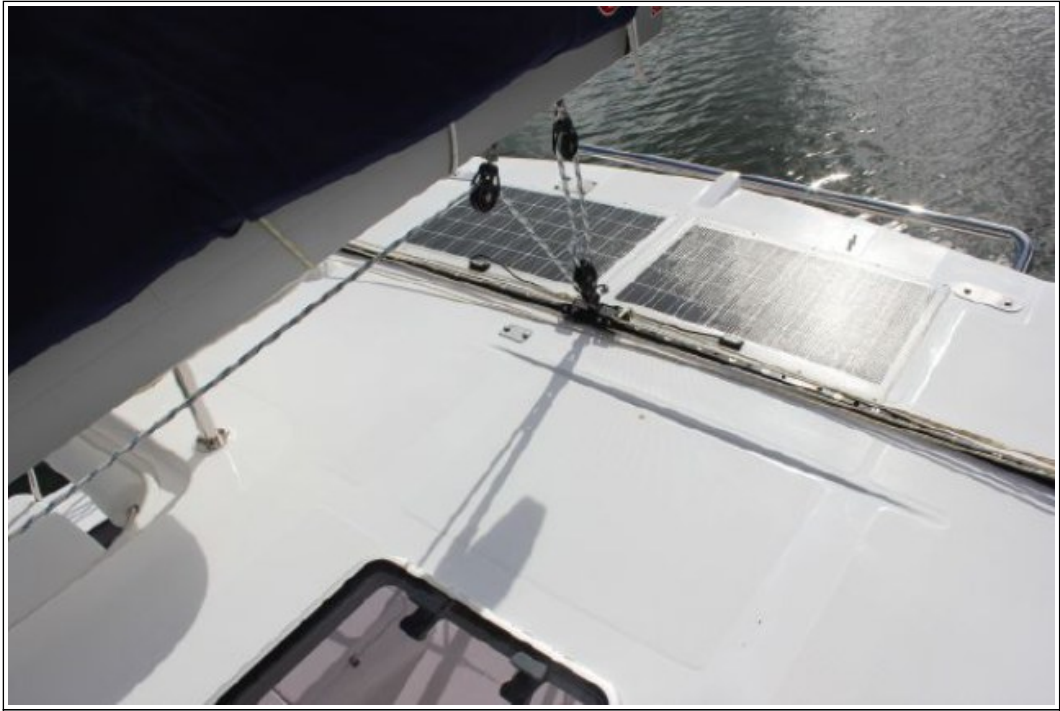


























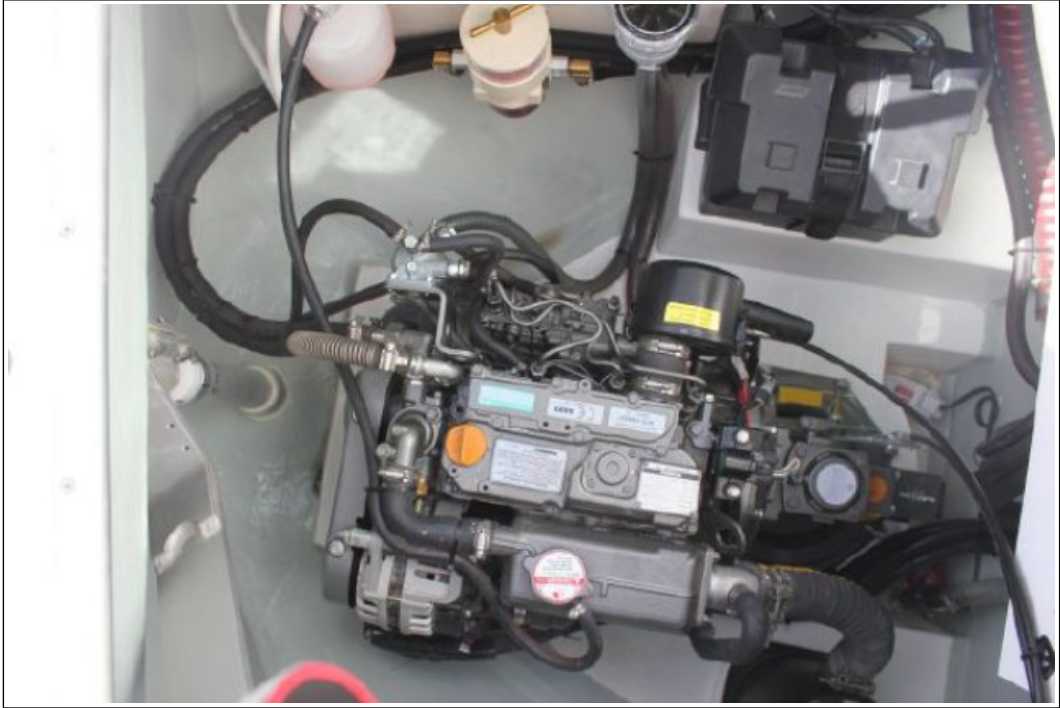








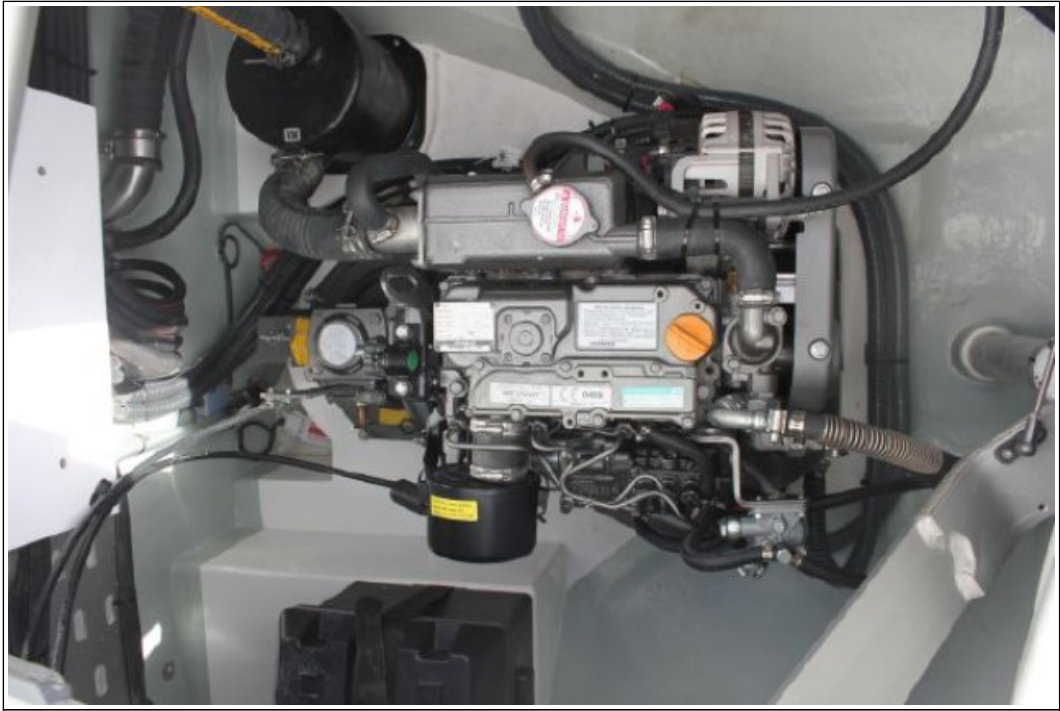






















Disclaimer

The Company offers the details of this vessel in good faith but cannot guarantee or warrant the accuracy of this information nor warrant the condition of the vessel. A buyer should instruct his agents, or his surveyors to investigate such details as the buyer desired validated. This vessel is offered subject to prior sale, price change, or withdrawal without notice. Photos may not properly reflect the current condition of the actual vessel offered for sale. In some cases stock photographs may have been used.

Notes: This listing is courtesy of the BoatWizard MLS and may be centrally listed with another broker. It is offered as a convenience by this broker/dealer to its clients and is not intended to convey representation of a particular vessel.

Mechanical Disclaimer

Engine and generator hours are as of the date of the original listing and are a representation of what the listing broker is told by the owner and/or actual reading of the engine hour meters. The broker cannot guarantee the true hours. It is the responsibility of the purchaser and/or his agent to verify engine hours, warranties implied or otherwise and major overhauls as well as all other representations noted on the listing.

Dinghy Disclaimer

All dinghies are considered separate vessels and should have separate titles and documents. There is no guarantee as to the title of the dinghy on this vessel so Buyer accepts that while he may receive the dinghy included in the transaction, he may not receive the proper title to it.