

## 2025 Sunreef 70 BROCHURE-SUNREEF 70



### Basic Vessel Summary

<b>Manufacturer:</b>	SUNREEF
<b>Model:</b>	Sunreef 70
<b>Model Year:</b>	2025
<b>Type of Yacht:</b>	Sail
<b>Price:</b>	Price on Application
<b>Condition:</b>	Brochure
<b>Status:</b>	Catamaran for Sale
<b>Location</b>	Poland
<b>Manuf. Length:</b>	71' ( 21.64 m)
<b>Beam:</b>	35' 6" ( 10.82 m)
<b>Fuel Capacity:</b>	1056 g
<b>Water Capacity:</b>	422 g
<b>Hull Material:</b>	Fiberglass Reinforced Plastic- FRP
<b>Hull Configuration:</b>	Catamaran
<b>Engine Fuel Type</b>	Electric

## Engine Condition

New

### Boat Description:

The Sunreef 70 Electric is a revolutionary luxury catamaran that combines eco-conscious technology with world-class craftsmanship.

Designed for unparalleled comfort and efficiency, this sailing yacht offers a spacious and elegantly designed interior with panoramic windows that flood the living areas with natural light. The expansive salon seamlessly integrates with the outdoor spaces, creating a perfect environment for relaxation and socializing. The customizable layout options allow owners to tailor the accommodations to their needs, ensuring the highest levels of luxury and convenience.

Equipped with a state-of-the-art electric propulsion system, the Sunreef 70 Electric delivers silent, vibration-free cruising with minimal environmental impact. Its advanced solar power system, integrated into the yacht's structure, provides renewable energy to support onboard operations and extend cruising autonomy. The flybridge offers a generous lounging area with breathtaking views, while the aft deck is ideal for alfresco dining and entertaining.

With superior performance, an eco-friendly approach, and sophisticated design, the Sunreef 70 Electric sets new standards in sustainable yachting. Whether for private ownership or charter, this cutting-edge catamaran redefines luxury sailing while prioritizing sustainability.

Experience the perfect blend of innovation and elegance with the Sunreef 70 Electric.

## Full Specification

### Layout & Accommodations

The Sunreef 70 has 2 version Eco Version or Classic Version.

Offers a customizable layout, providing expansive living spaces totaling 291m<sup>2</sup>.

The design emphasizes seamless indoor-outdoor flow, creating a harmonious environment for relaxation and entertainment.

### Deck & Equipment

The yacht features expansive deck areas designed for leisure and entertainment.

The layout promotes a seamless connection between indoor and outdoor spaces, enhancing the onboard experience.

## Electronics & Navigation

State-of-the-art technology, ensuring safe and efficient navigation.

## Electrical, Power & Plumbing

The Sunreef 70 Electric is equipped with a comprehensive solar power system, featuring solar panels integrated into various surfaces of the yacht.

This system enables energy generation under sail, contributing to the vessel's autonomy and sustainability.

## Engine & Mechanical

This model operates with zero emissions, offering ultra-silent operation and full autonomy.

The electric propulsion system is designed to provide efficient and sustainable cruising capabilities.

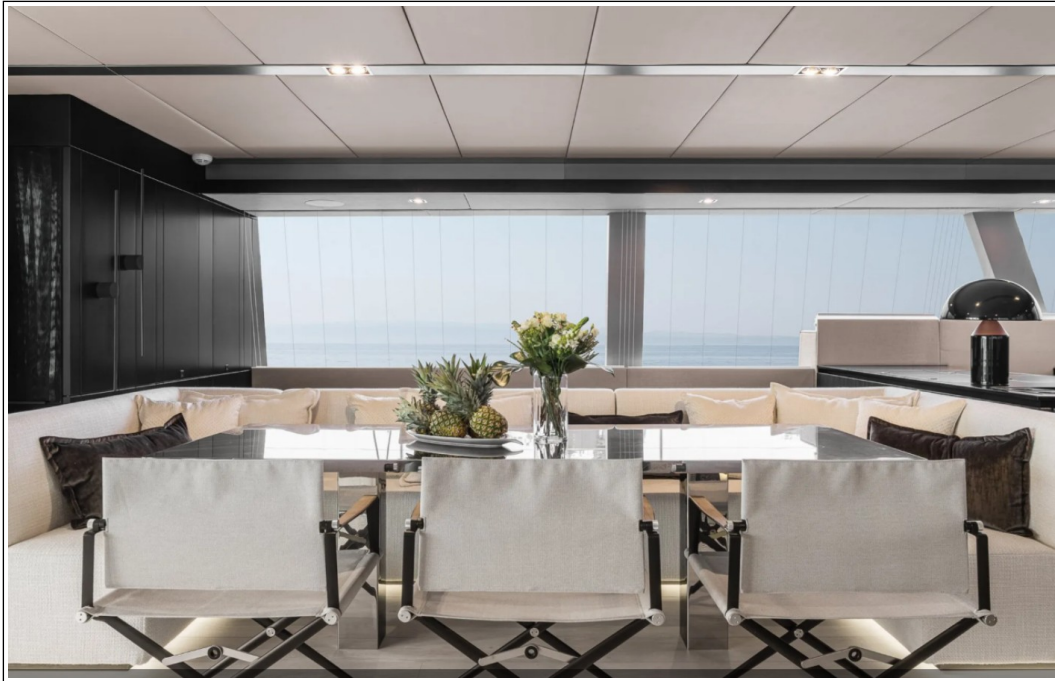
## Additional Information

The Sunreef 70 Electric represents a commitment to sustainable yachting, combining luxury with eco-friendly technology. Its design and features cater to environmentally conscious sailors seeking comfort and performance.

**Image Gallery**







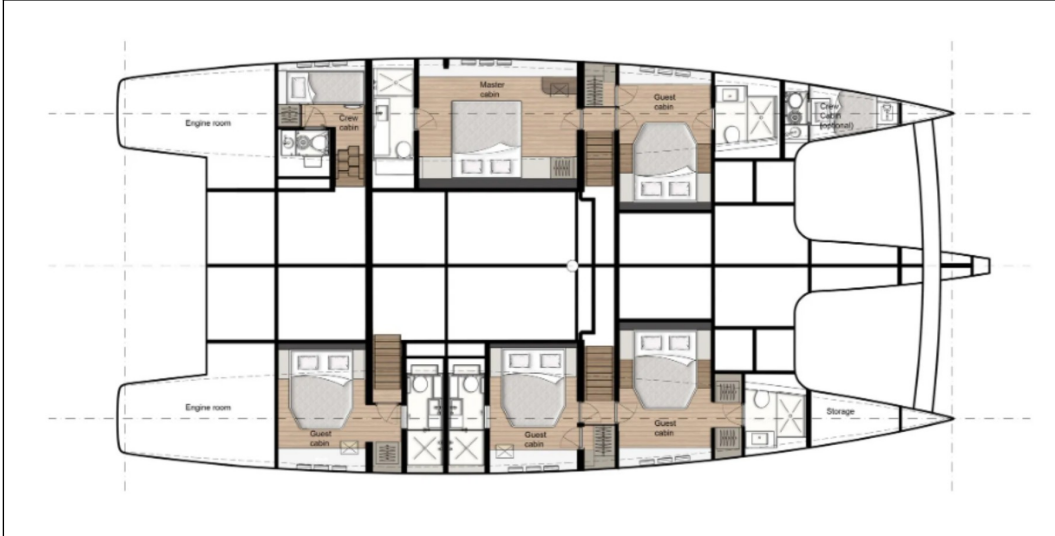
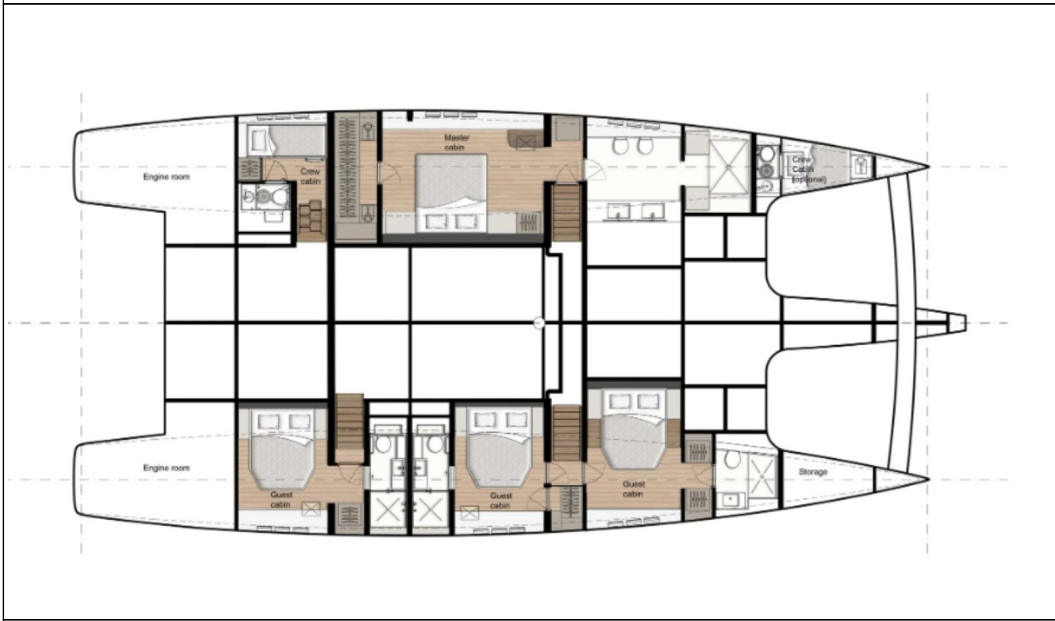


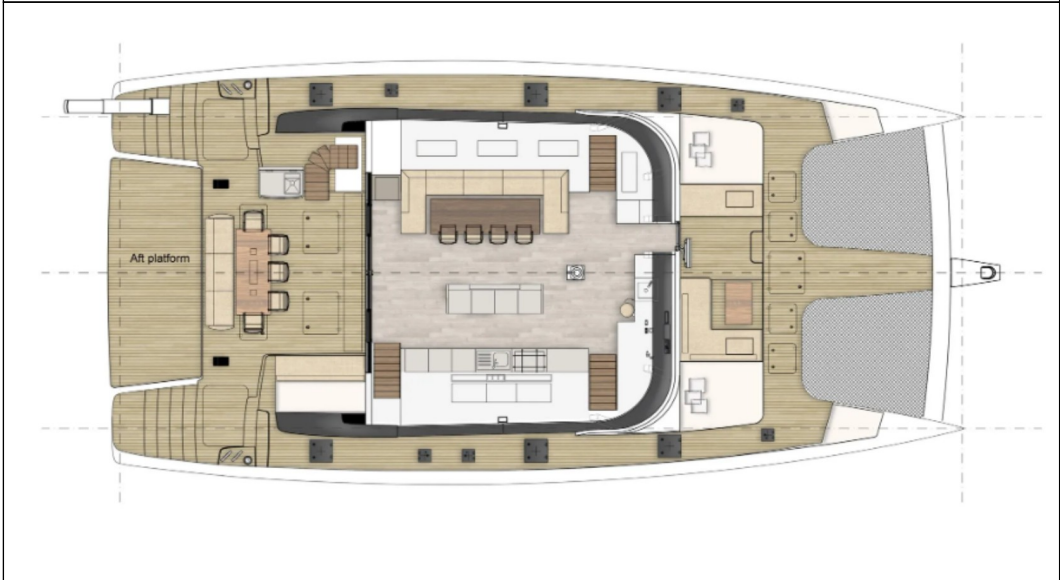
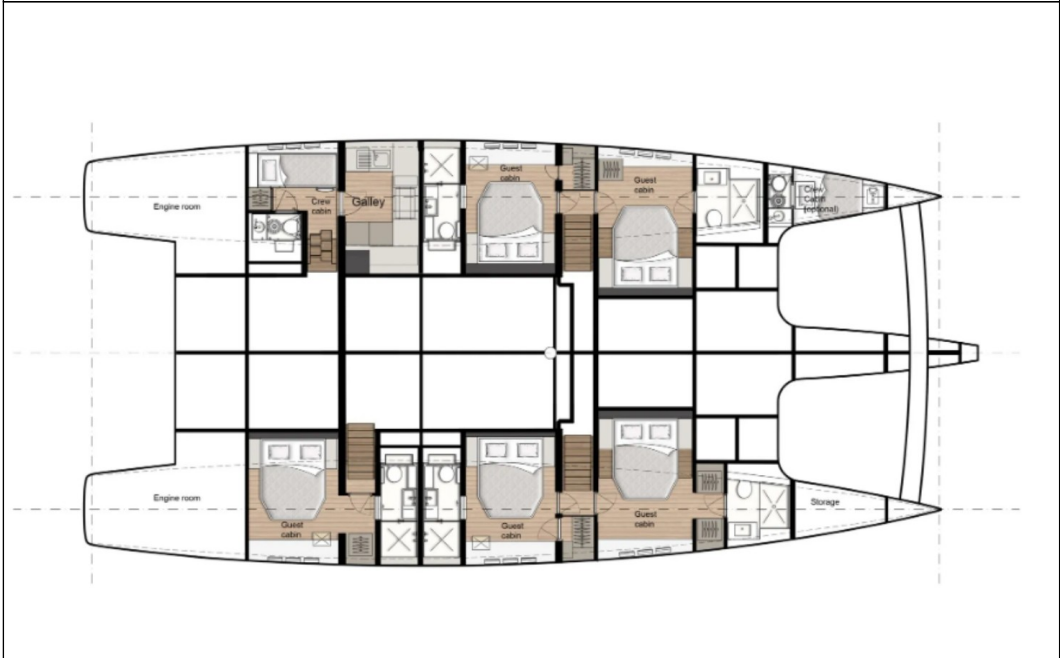
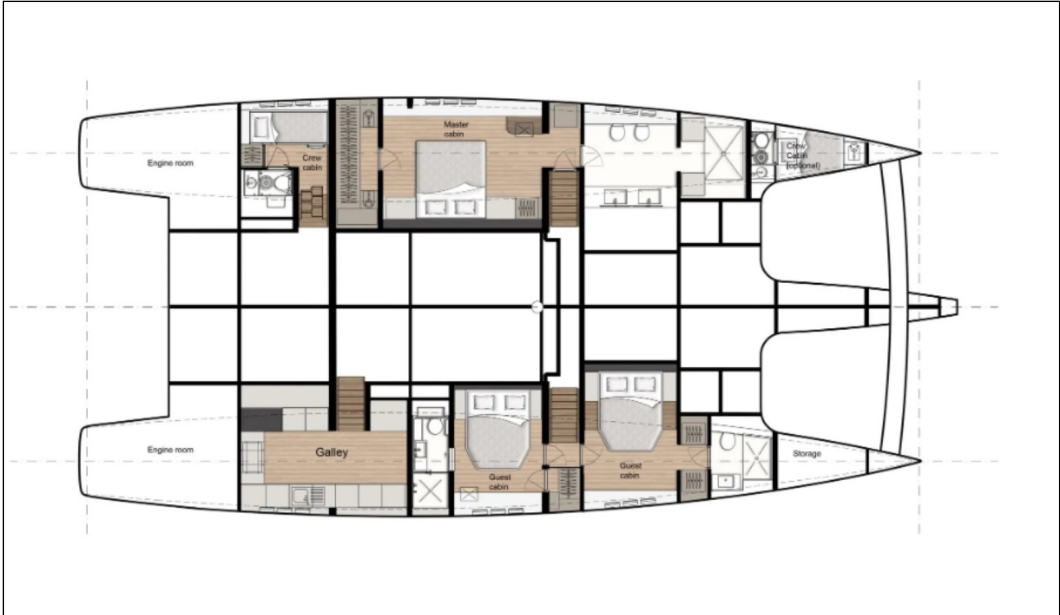


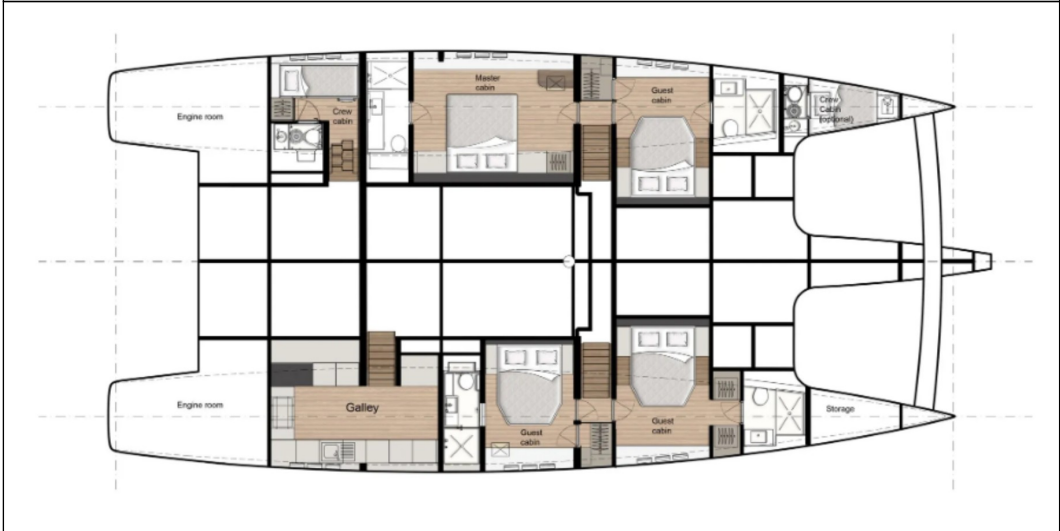
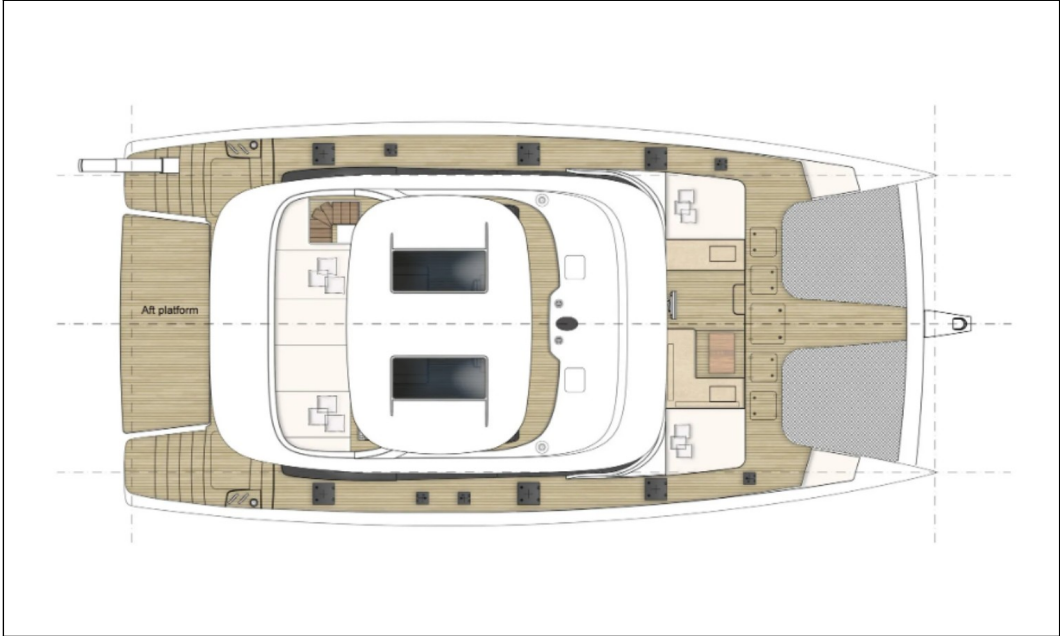
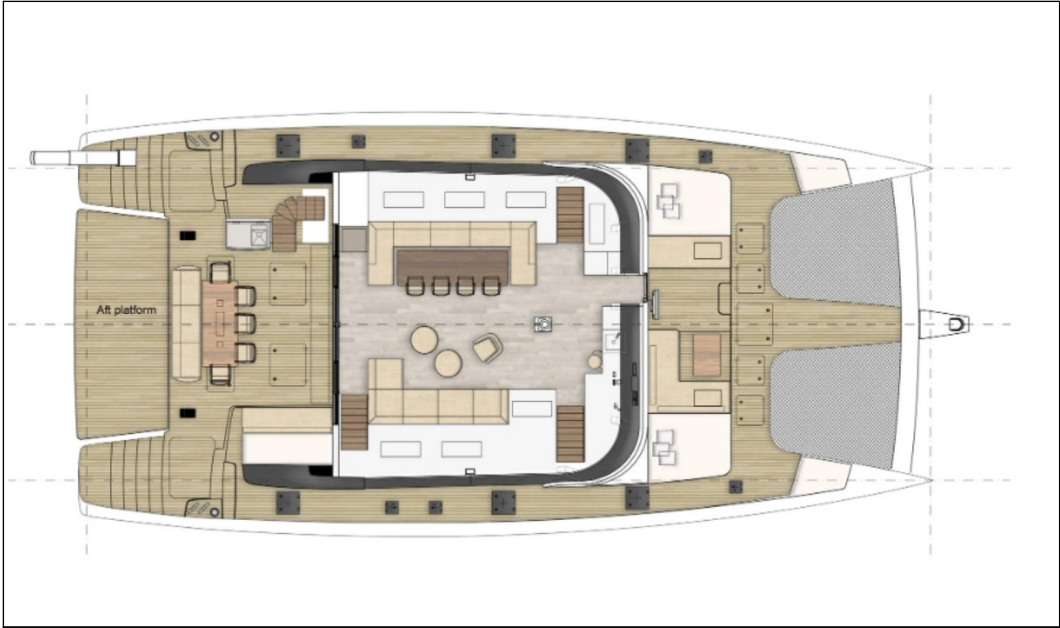


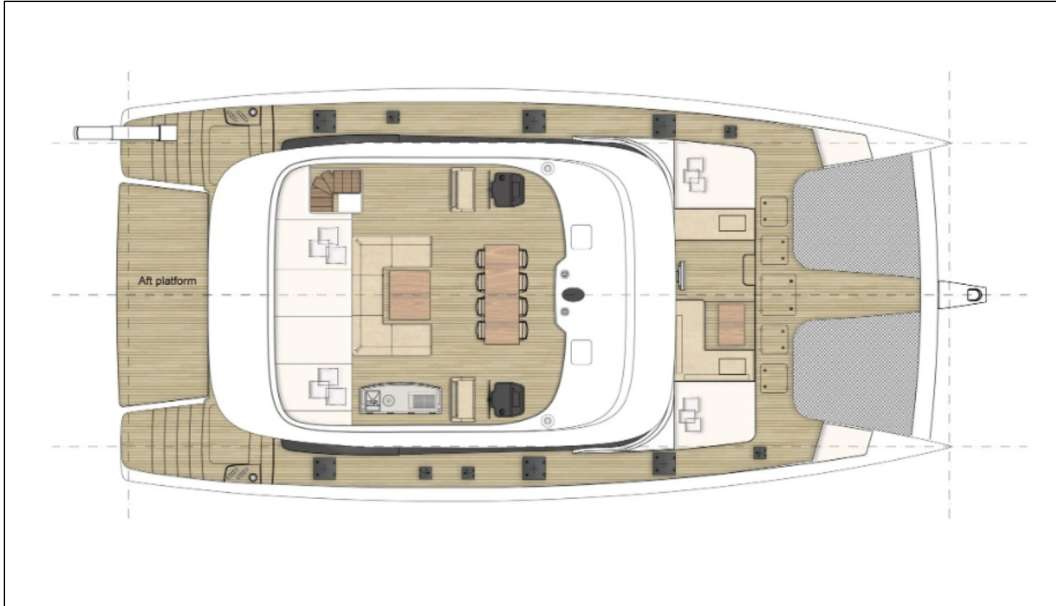












### **Disclaimer**

The Company offers the details of this vessel in good faith but cannot guarantee or warrant the accuracy of this information nor warrant the condition of the vessel. A buyer should instruct his agents, or his surveyors to investigate such details as the buyer desired validated. This vessel is offered subject to prior sale, price change, or withdrawal without notice. Photos may not properly reflect the current condition of the actual vessel offered for sale. In some cases stock photographs may have been used.

### **Mechanical Disclaimer**

Engine and generator hours are as of the date of the original listing and are a representation of what the listing broker is told by the owner and/or actual reading of the engine hour meters. The broker cannot guarantee the true hours. It is the responsibility of the purchaser and/or his agent to verify engine hours, warranties implied or otherwise and major overhauls as well as all other representations noted on the listing.

### **Dinghy Disclaimer**

All dinghies are considered separate vessels and should have separate titles and documents. There is no guarantee as to the title of the dinghy on this vessel so Buyer accepts that while he may receive the dinghy included in the transaction, he may not receive the proper title to it.