

1965 Pilot Yawl 35 BEAM REACH



Basic Vessel Summary

Manufacturer:	HINKLEY YACHTS
Model:	Pilot Yawl 35
Model Year:	1965
Year Built:	1965
Type of Yacht:	Sail
Price:	\$30,000
Condition:	Used
Status:	Acceptance of Vessel
Location	Annapolis Maryland (MD)
Manuf. Length:	35' 9" (10.90 m)
Maximum Draft:	5' (1.52 m)
Beam:	9' 6" (2.90 m)
No. of berths:	5
No. of Cabins:	1
No. of Heads:	1

Cruise speed:	6
Max speed:	6
Weight - Displacement:	6.85 ton (13,700 lb)
Hull Material:	Fiberglass
Hull Configuration:	Monohull
Engine Manufacturer	Westerbeke
Engine Model	4-107FWC
Engine Year	1990
Engine Horsepower	35
Engine Hours (Starboard)	2600
Engine Type	Inboard
Engine Configuration	Single
Engine Fuel Type	Diesel
Engine Condition	Used
Does the boat have a generator?	No
Does a dinghy come with the boat?	No

Boat Description:

For sale: Hinckley Yachts Pilot Yawl 35 BEAM REACH, a classic Sparkman & Stephens design built to the exacting standards of Hinckley Yachts. This timeless beauty represents the perfect blend of elegance, performance, and craftsmanship. Hull and bottom paint are brand new in 2024, giving the boat a fresh look and added value. Recent upgrades include new sails, running rigging, fuel tank, and holding tank, ensuring the vessel is ready for reliable cruising. The standing rigging and all teak are in excellent condition, reflecting the boat's meticulous care. The fiberglass decks require only minor touch-up work to complete the renovation, presenting a fantastic opportunity to own and personalize a legendary bluewater cruiser. Don't miss the chance to sail a true classic — the Hinckley Pilot Yawl 35 BEAM REACH.

Full Specification

Layout & Accommodations

V-berth forward with one double and one single berth in the salon. Galley

Galley

Large icebox, Shipmate 3 burner propane stove and oven. Isotherm water heater, 120V and engine heat.

Deck & Equipment

Fortress anchor, 2 each Lewmar 8(mast),
16,34,44 (cockpit) winches

Electronics & Navigation

ICOM IC-M330 VHF , stereo

Electrical, Power & Plumbing

30 amp shore tie, pressurized fresh water

Engine & Mechanical

Westerbeke 4-107 FWC diesel with 2600 hours

Sails & Rigging

New sails and sail covers, Jib, Main and Mizzen I: 38.8' J: 12.25'

P: 33.83'

E: 15.50'

PY: 18.10'

EY: 7.60'

Image Gallery

















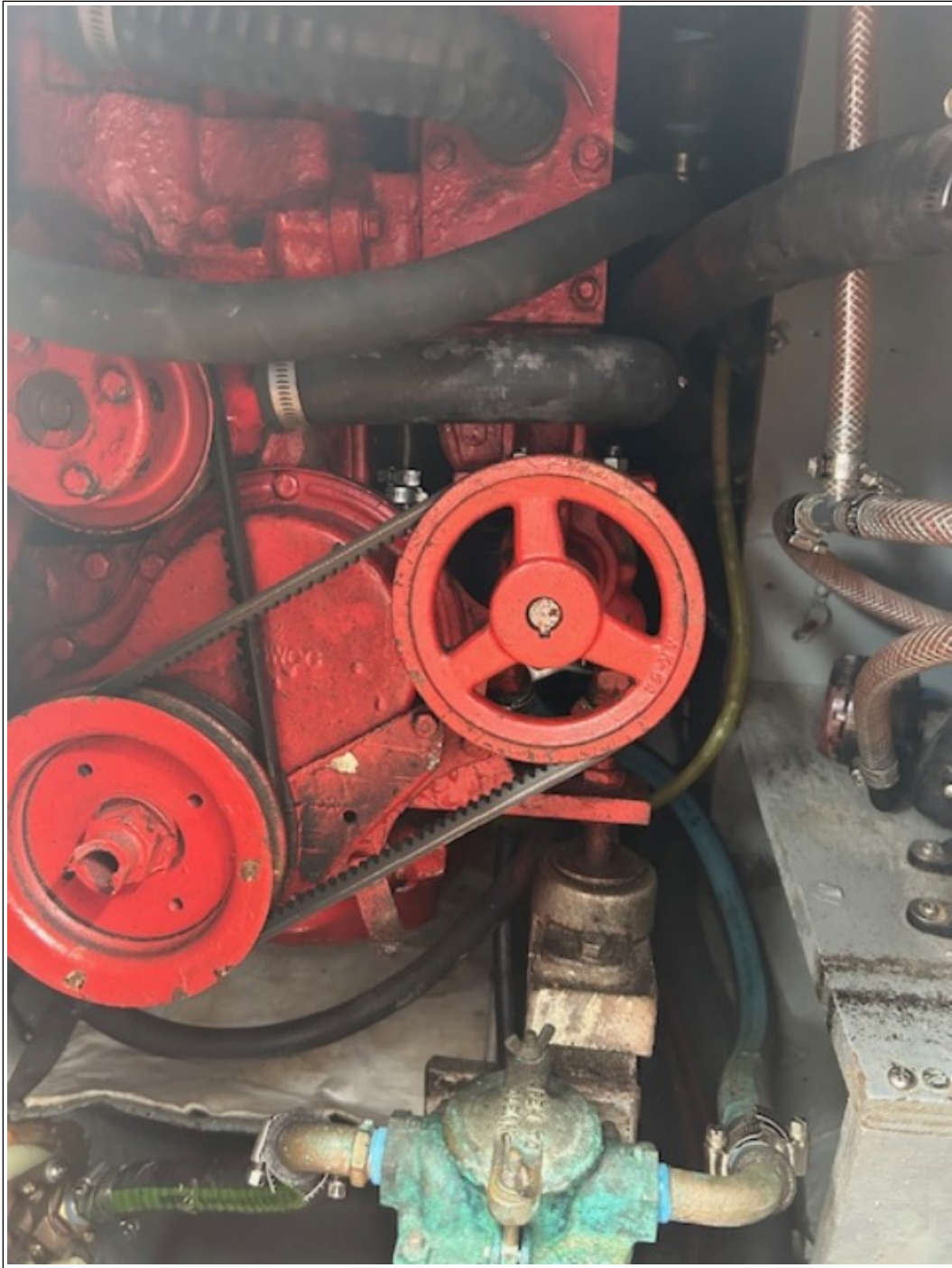












Disclaimer

The Company offers the details of this vessel in good faith but cannot guarantee or warrant the accuracy of this information nor warrant the condition of the vessel. A buyer should instruct his agents, or his surveyors to investigate such details as the buyer desired validated. This vessel is offered subject to prior sale, price change, or withdrawal without notice. Photos may not properly reflect the current condition of the actual vessel offered for sale. In some cases stock photographs may have been used.

Mechanical Disclaimer

Engine and generator hours are as of the date of the original listing and are a representation of what the listing broker is told by the owner and/or actual reading of the engine hour meters. The broker cannot guarantee the true hours. It is the responsibility of the purchaser and/or his agent to verify engine hours, warranties implied or otherwise and major overhauls as well as all other representations noted on the listing.

Dinghy Disclaimer

All dinghies are considered separate vessels and should have separate titles and documents. There is no guarantee as to the title of the dinghy on this vessel so Buyer accepts that while he may receive the dinghy included in the transaction, he may not receive the proper title to it.