

## 2011 Lagoon 450 F SEARCHING FOR BLISS



### Basic Vessel Summary

<b>Manufacturer:</b>	LAGOON
<b>Model:</b>	Lagoon 450 F
<b>Model Year:</b>	2011
<b>Year Built:</b>	2011
<b>Type of Yacht:</b>	Sail
<b>Price:</b>	\$449,500
<b>Condition:</b>	Used
<b>Status:</b>	Sold
<b>Location</b>	British Virgin Islands
<b>Manuf. Length:</b>	45' 10" ( 13.97 m)
<b>Maximum Draft:</b>	4' 3" ( 1.30 m)
<b>Beam:</b>	25' 9" ( 7.85 m)
<b>Mast Height Clearance:</b>	76' ( 23.16 m)
<b>No. of berths:</b>	3 x DOUBLE
<b>No. of Cabins:</b>	3

<b>No. of Heads:</b>	3
<b>Fuel Capacity:</b>	264 gal g
<b>Water Capacity:</b>	92 gal g
<b>Holding tank:</b>	21 x 3
<b>Hull Material:</b>	Fiberglass Reinforced Plastic- FRP
<b>Hull Configuration:</b>	Catamaran
<b>Engine Manufacturer</b>	YANMAR
<b>Engine Model</b>	4JH5E
<b>Engine Horsepower</b>	54
<b>Engine Hours (Port)</b>	1113
<b>Engine Hours (Starboard)</b>	1129
<b>Engine Type</b>	Inboard
<b>Engine Configuration</b>	Twin
<b>Engine Fuel Type</b>	Diesel
<b>Engine Condition</b>	Used
<b>Does the boat have a generator?</b>	Yes
<b>Generator Model</b>	Cummins Onan 11.5 KW MDK BK/L/M/N
<b>Generator Operating Hours</b>	572
<b>Does a dinghy come with the boat?</b>	No

### **Boat Description:**

Searching For Bliss is a remarkably well maintained 3 cabin OWNER version 2011 Lagoon 450 with Flybridge. She has never been chartered, has not suffered any Hurricane damage, and the bulkheads have been reinforced and certified under the Lagoon warranty program. Certificate issued by Lagoon and available for new owner.

The current Owners have used Searching for Bliss as a second home in the BVI fulfilling one of their bucket list retirement dreams and have enjoyed every minute of it. They are now ready to move on to their next bucket list items which will limit their time to spend on board in the future.

Searching For Bliss was commissioned at the same marina as she is docked today in the BVI and has spent her days sailing between the Virgin Islands and south to the Grenadines to avoid storms.

The current owners have her professionally maintained under the Catamaran Co. Owners Guardage program, and have items serviced, and replaced as required.

# Full Specification

## Layout & Accommodations

Main Salon with upgraded Leather cushions

The flooring throughout looks virtually unused

Smart TV (New 2025) on motorized lift to stow beneath countertop when not in use

Owners' Cabin vanity area

Custom memory foam Mattress and bedding

Searching for Bliss has an extensive parts collection and organized parts list. She has an up-to-date maintenance log which includes every maintenance activity and replaced item the current owner has completed.

Number of double berths: 3

Number of cabins: 3 (Starboard Owners hull + 2 guest en-suite port cabins)

Number of heads: 3

Leather interior seating

Removable Carpet in cabin areas

Extra berth in forward starboard compartment, currently used as storage

Extra leather stools in salon

Under Bed Spring slats in all cabins

Custom bedding

Leather Bulkhead organizers in each cabin

New Sirocco fans in all cabins and salon

Entry from the cockpit via sliding door, galley is to port and aft, navigation area port and forward, salon seating and table to starboard with storage and electrical panels starboard and aft.

Large main salon with panoramic view - standing headroom approx: 6'9"

Seating for 5 / 6 people

Storage compartments under bench seats

Portside Cabins, Aft Cabin, Forward Cabin, and Heads (details included)

Starboard Owners Cabin (details included)

Starboard Midship Area and Head (details included)

The starboard forward bow is fitted with an air conditioning duct connected to the main salon unit and a side-opening hatch. This space can easily be converted back into a crew cabin if desired but is currently used for storage.

## Galley

Galley in main salon to direct access to cockpit through sliding window

Synthetic resin countertop

Triple stainless-steel sinks with chrome-plated mixer taps hot and cold water

Cutlery drawer and storage drawers

Storage under sink  
Eno 3 burner stove / oven with grill stainless steel  
New Microwave (2024)  
Vitifrigo 12V/110 fridge, stainless front  
Vitifrigo 12V/110 freezer, stainless front  
Waeco front opening fridge located in the cockpit  
Uline Ice maker in the cockpit

## Deck & Equipment

Custom hard top for flybridge, with rollaway Isinglass flybridge spray/windshield  
Tinted saloon windows  
Oversized Rocna Anchor & New Chain 2022  
Upgraded Trampolines  
Roll away cockpit shades & flybridge campion way weather protectors  
Custom Mahogany cockpit table with wood inlay  
Swimming ladder  
Cockpit shower  
Outboard engine brackets  
Davits with solar panels mounted to Davits  
Magma Grill and Cover  
Transocean Life raft  
Custom hardtop, sunroof, and isinglass surrounds  
Mainsail cover  
Lazy jacks and stack pack  
Sunshades for the cockpit and trampoline area  
Covers for cockpit, salon table, Flybridge steps, Helm Station, and winches  
Storage locker on aft cockpit starboard side  
Deck light on mast  
Sun pad on upper deck forward of covered hard top  
Settee area forward  
8 mooring cleats  
Vertical axe windlass 12V 1700W in anchor locker  
88lb Rocna anchor and 2 additional anchors (Danforth and Delta)  
Mainsheet traveler track, genoa tracks  
Large cockpit usable as deck salon  
Cockpit refrigerator and separate ice maker  
Sliding window between cockpit and galley  
Direct access from cockpit to helm station  
Storage for 2 propane tanks  
Built-in storage for cockpit maintenance table  
Flybridge: Hardtop Bimini, large bench, helm station, storage, sun pad

All winches are electric, providing effortless sail handling and convenience while cruising.

## Electronics & Navigation

2 Touch screen Raymarine Axiom Pro Multifunction display

Navionics Platinum+

Airmar Bronze thru-hull transducer

Autopilot

Compass

Raymarine 260 Modular VHF

Radar

Fusion Radio MSBT100 with Bose speakers and DVD/CD player

New Smart TV 2025

Raymarine AIS send and receive

Quick Chain Counter

LED navigation lights

Dual Band MiFi Router

Raymarine eSeries 12.1 and i70 multi-function displays

Furuno NX 300 navtex

Raymarine Ray55E VHF radio

Fusion MS IP700i media player

Raymarine s100 autopilot remote control

Ray mic for VHF

At Helm: Raymarine eSeries 12.1, ST70, autopilot X30, remote control for media, Plastimo compass, Raymic VHF & speaker

Iridium Go satellite system with antenna

## Electrical, Power & Plumbing

5 solar panels and charge controller

Battery chargers - Cristec 40A and Victron 60A, plus Cristec 25A for generator

Air conditioning/Heating units – 4 total Dometic units

Hot water - Quick Nautic Boiler 60

Fresh water maker - Desalinator - Duo D100. 12v/24v & 110V 100 litres per hour

Washing machine/dryer - Splendide

Refrigerators and freezers (Vitifrigo, Waeco)

Ice Maker - Uline

6 AGM House batteries replaced 2023/24

Starter Batteries replaced 2024

Shore power inlet

Generator - Cummins Onan 11.5 KW MDK BK (New 2022, 572 hrs)

Inverter – Cristec 25A

Main 12V panel with gauges, breakers, meters  
Water maker  
LED underwater lights  
2 engine start batteries and 1 gen set start battery  
6 house batteries

## Engine & Mechanical

2 x 54 hp Yanmar diesels (4JH5E)  
~1140 hrs each  
Flex-o-Fold 3 blade folding propellers  
Drive Type: Sail drive SD50  
Raycor Fuel Filters  
Fuel Tanks: 2 (264 Gallons total)  
Fresh Water Tanks: 3  
Holding Tanks: 3  
Engine hatch gas struts  
Soundproofed compartments  
Electrical extractor ventilation  
Onan Generator 2022 ~570 hrs

## Sails & Rigging

1 Dacron full roach full batten mainsail  
1 furling genoa with UV protection  
Aluminum mast with ball-bearing track  
Double pushing spreader rig  
Aluminum boom  
Shrouds, forestay with furler  
Lazy jacks and battened mainsail  
Running rigging (main halyard replaced 2023, sheets, reefing lines, etc.)

## Additional Information

Washer/dryer  
Water maker  
Gen Set – new in 2022  
Custom bedding & upholstered cushions  
Clear kayak  
Bean Bags  
Custom leather cushions  
Dinghy: 12-foot Carib Advantage 350 rigid hull inflatable  
Outboard: Tohatsu 9.8 hp (New 2025)

Safety equipment (life jackets, flares, ePIRBs, fire extinguishers, etc.)

First aid kit

Searching for Bliss is marina-based in the BVIs and ready for her next owner.

The Lagoon bulkhead repair certificate is available and included with the listing documentation.

Image Gallery







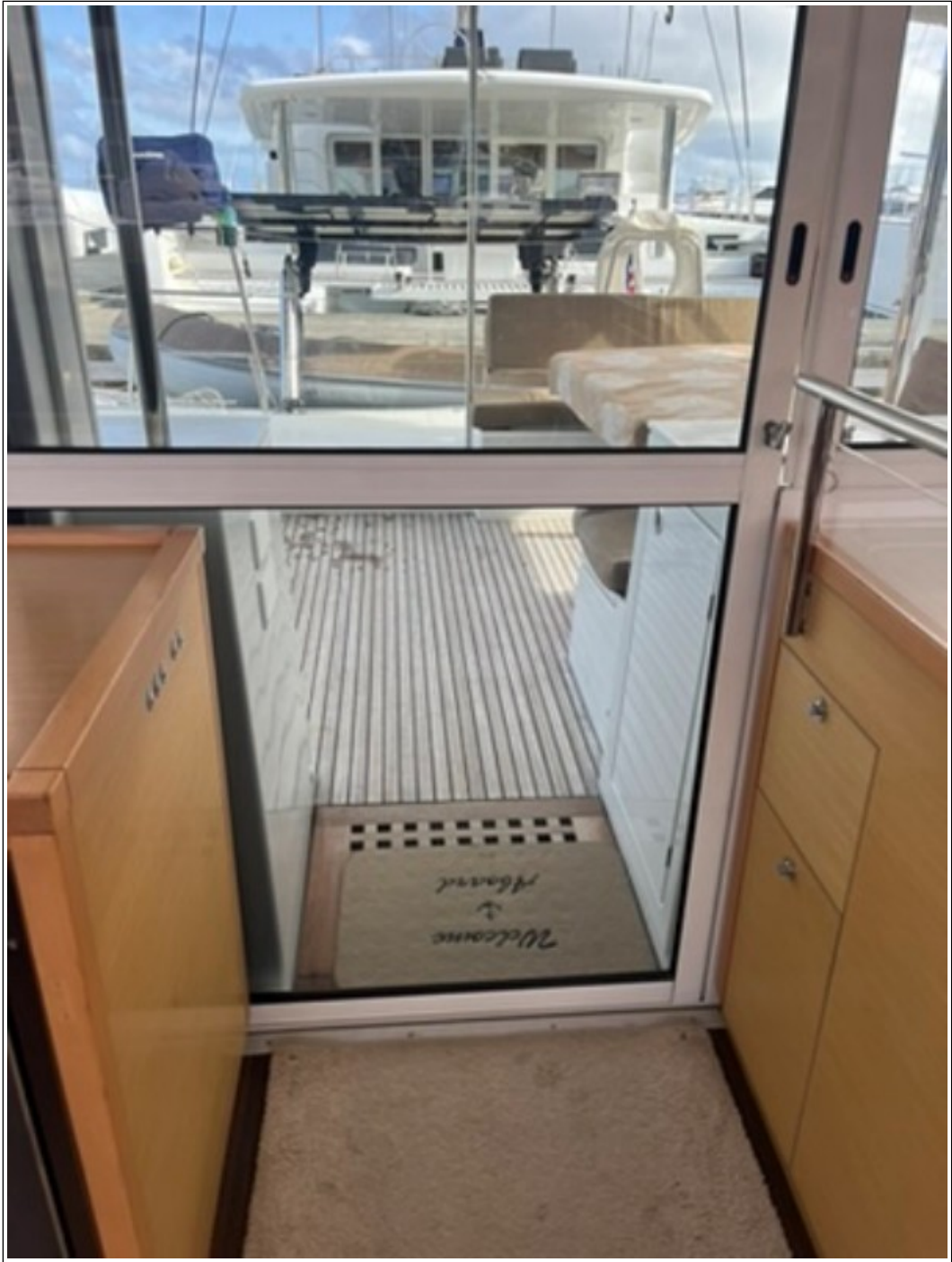






Dual Band MiFi Router



























**Standard Wash Cycle**

- 1 Cold
- 2 Warm
- 3 Hot
- 4 Extra Hot

**Permanent Press**

- 1 Cold
- 2 Warm
- 3 Hot
- 4 Extra Hot

**Sanitize**

- 1 Cold
- 2 Warm
- 3 Hot
- 4 Extra Hot

Splendide

Wash Temp: 120, 130, 140, 150, 160, 170, 180, 190, 200, 210, 220, 230, 240, 250, 260, 270, 280, 290, 300, 310, 320, 330, 340, 350, 360, 370, 380, 390, 400, 410, 420, 430, 440, 450, 460, 470, 480, 490, 500, 510, 520, 530, 540, 550, 560, 570, 580, 590, 600, 610, 620, 630, 640, 650, 660, 670, 680, 690, 700, 710, 720, 730, 740, 750, 760, 770, 780, 790, 800, 810, 820, 830, 840, 850, 860, 870, 880, 890, 900, 910, 920, 930, 940, 950, 960, 970, 980, 990, 1000

**IF A BULB BURNS** - The appliance is intended for use only with the bulb type specified in the user manual. Do not use a bulb with a higher wattage than the one specified. Do not use a bulb with a different base than the one specified. Do not use a bulb with a different color than the one specified.

**IF A BULB BURNS** - L'appliance est destinée à être utilisée avec le type de ampoule spécifié dans le manuel de l'utilisateur. Ne pas utiliser une ampoule à plus forte puissance que celle spécifiée. Ne pas utiliser une ampoule d'un autre type que celui spécifié. Ne pas utiliser une ampoule d'une autre couleur que celle spécifiée.

**IF A BULB BURNS** - Das Gerät ist für den Einsatz mit der angegebenen Glühlampe vorgesehen. Bitte verwenden Sie keine Glühlampe mit einer höheren Leistung als die in der Bedienungsanleitung angegeben ist. Verwenden Sie keine Glühlampe mit einer anderen Bauform als die in der Bedienungsanleitung angegeben ist. Verwenden Sie keine Glühlampe mit einer anderen Farbe als die in der Bedienungsanleitung angegeben ist.

Washer/Dryer















Customer made cockpit weather protectors























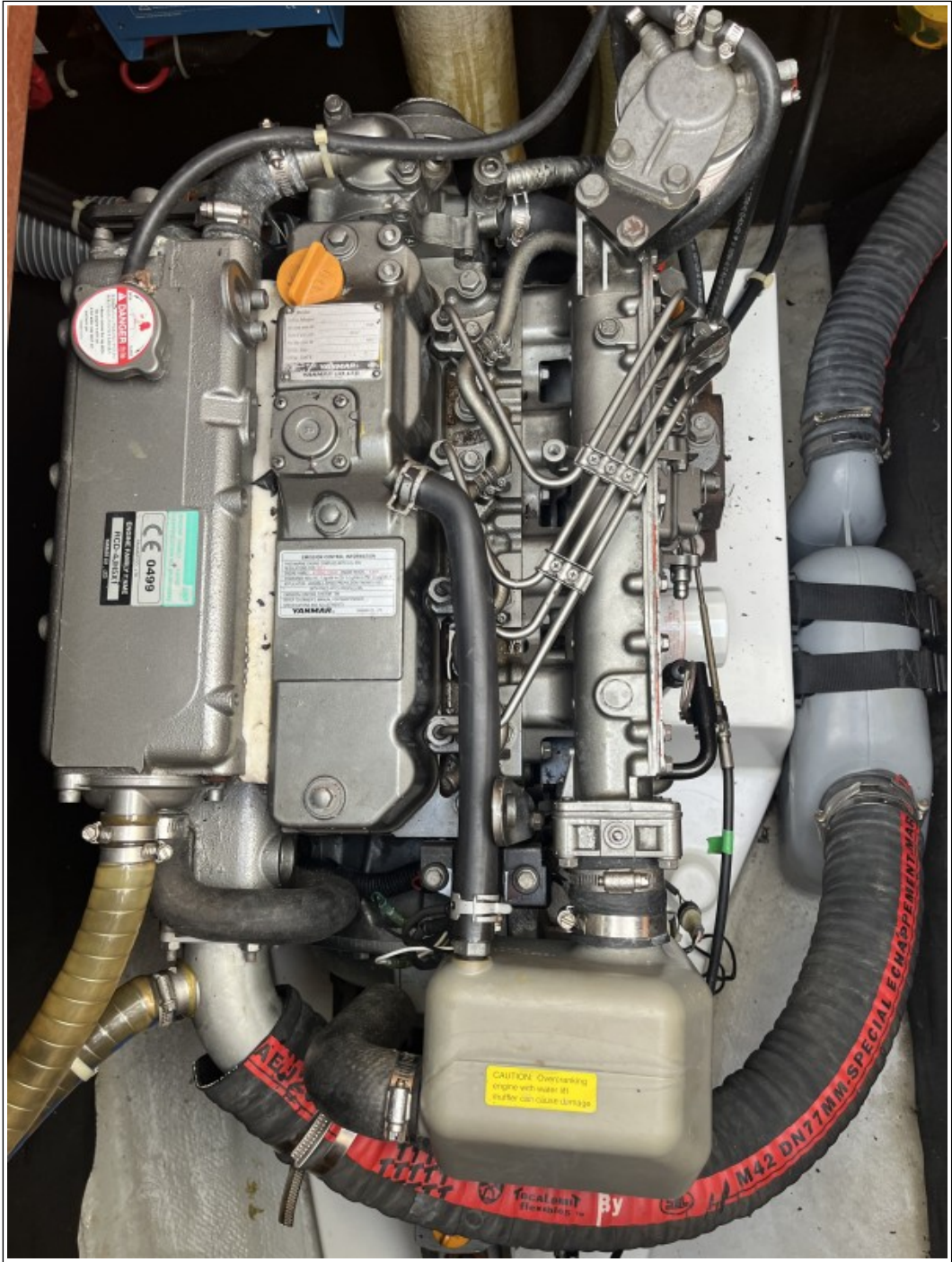
**Watermaker  
Low hours & Professionally maintained  
Membrane replace 2021**

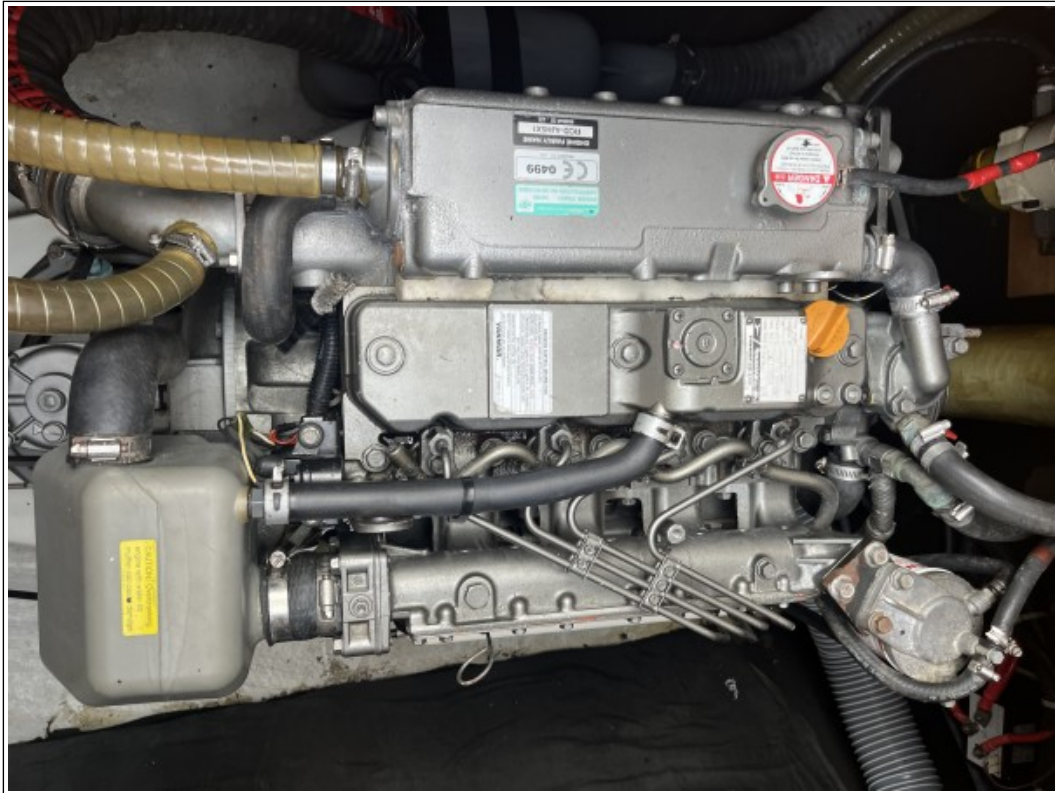


**AC/DC Control panel  
Victron Charge Controller  
Underwater Lights**



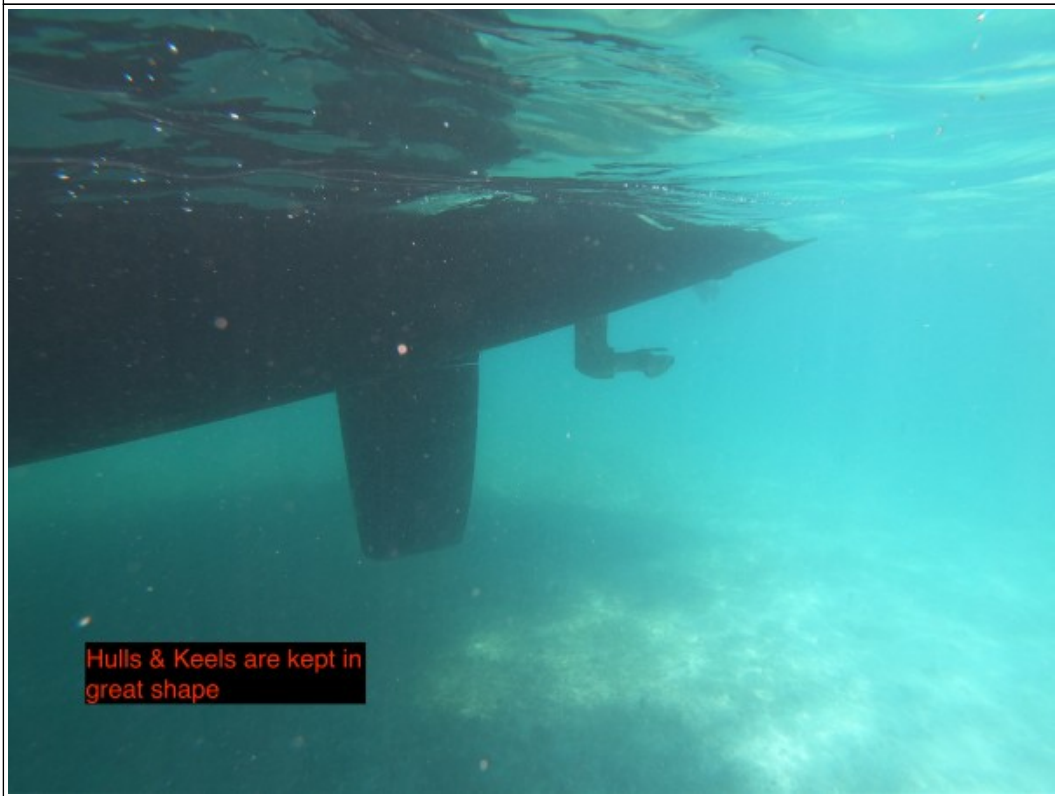
Main Panel  
Inverter  
Genset  
Deck wash pump switch  
High & Low current AC  
ship/shore breakers







Folding Propellers & Underwater Lights



Hulls & Keels are kept in great shape



**Platismo Transocean  
Liferaft**



### **Disclaimer**

The Company offers the details of this vessel in good faith but cannot guarantee or warrant the accuracy of this information nor warrant the condition of the vessel. A buyer should instruct his agents, or his surveyors to investigate such details as the buyer desired validated. This vessel is offered subject to prior sale, price change, or withdrawal without notice. Photos may not properly reflect the current condition of the actual vessel offered for sale. In some cases stock photographs may have been used.

**Mechanical Disclaimer**

Engine and generator hours are as of the date of the original listing and are a representation of what the listing broker is told by the owner and/or actual reading of the engine hour meters. The broker cannot guarantee the true hours. It is the responsibility of the purchaser and/or his agent to verify engine hours, warranties implied or otherwise and major overhauls as well as all other representations noted on the listing.

**Dinghy Disclaimer**

All dinghies are considered separate vessels and should have separate titles and documents. There is no guarantee as to the title of the dinghy on this vessel so Buyer accepts that while he may receive the dinghy included in the transaction, he may not receive the proper title to it.