

2019 Lagoon 42 2 BLACK SHEEP



Basic Vessel Summary

Manufacturer:	LAGOON
Model:	Lagoon 42
Model Year:	2019
Year Built:	2018
Type of Yacht:	Sail
Price:	\$449,000
Condition:	Used
Status:	Sold
Location	Fort Pierce Florida (FL)
Manuf. Length:	42' (12.80 m)
Maximum Draft:	4' (1.22 m)
Beam:	25' (7.62 m)
LWL:	41' (12.50 m)
Mast Height Clearance:	67' (20.42 m)
No. of berths:	3

No. of Cabins:	3
No. of Heads:	3
Electric Circuit:	110 volt
Fuel Capacity:	158 g
Water Capacity:	79 g
Holding tank:	3 x 21
Cruise speed:	7
Max speed:	9
Weight - Displacement:	13.342 ton (26684 lb)
Hull Material:	Fiberglass Foam Cored
Hull Configuration:	Catamaran
Engine Manufacturer	YANMAR
Engine Model	4JH57
Engine Year	2019
Engine Horsepower	57
Engine Hours (Port)	1312
Engine Hours (Starboard)	1307
Engine Type	Inboard
Engine Configuration	Twin
Engine Fuel Type	Diesel
Engine Condition	Used
Does the boat have a generator?	Yes
Generator Model	Cummins Onan MDKBN
Generator Operating Hours	860
Generator Horsepower	13.5KW
Does a dinghy come with the boat?	Yes
Dinghy Model	2023 Highfield 340
Dinghy Length	11' 2"
Dinghy Model Year	2023
Dinghy Outboard Manufacturer	YAMAHA
Dinghy Outboard Horsepower	20
Dinghy Outboard Year	2024

[Boat Description:](#)

Discover the exceptional Lagoon 42 "2 Black Sheep", a beautifully maintained and fully equipped catamaran located in Fort Pierce, Florida.

Designed for both comfort and performance, this turnkey vessel is ideal for those seeking luxurious sailing with ease of handling. "2 Black Sheep" stands out with its spacious, modern layout and reliable solar power system, making it perfect for off-grid cruising or extended liveaboard adventures. Whether you're planning coastal hops or bluewater passages, this Lagoon 42 is ready to sail today—don't miss the chance to own this sleek and seaworthy catamaran.

Full Specification

Layout & Accommodations

Owner Version - 3 Cabins

Owner side desk and shelving

1 x double berth

2 x queen berths Under bed slats

3 Showers

Three Quiet flush electrical toilets fresh water - can be converted to sea water

Holding tanks 240l - 3x 80l

Hot water 40l - heated by engine cooling system AND electric heating element

Leather bulkhead organizers in the cabins

Remodeled in 2022 to include additional storage and expanded seating area suitable for sleeping and lounging (see interior pictures)

New cushion covers in 2023 Flatscreen TV

Decorative pillows

LED lighting with multiple lighting and color options controlled via a remote

Galley

Galley-Up, located on starboard side and remodeled in 2022 to increase storage and ease of access

Refrigeration in salon 12V 1x front loader (130l)

Top load built-in freezer Stove Eno 3 burner, gas Ninja Foodi 9-in-1 Pressure, Broil, Dehydrate, Slow Cooker, Air Fryer, and More, with 6.5 Quart capacity and multiple accessories

Ninja Pro compact smoothie & food processing blender with multiple accessories

Drinkmate sparkling water & soda maker with 3 60L cylinders

Ice maker - portable

700 Watt Microwave

Propane grill - Webber Q1000

Sink 1x stainless steel

Upgraded hot/cold freshwater faucet with sprayer

Seawater faucet with easy switch control

Dishes, pans, cups & a variety of kitchen utensils

Additional 3 drawers of storage & additional cabinet door for ease of access.

Additional storage/seating

Deck & Equipment

Sunbrella Sunshades at rear and sides of cockpit

Cockpit cushions

Full enclosure Fridge - stainless

Teak flooring in cockpit and sugar scoops (sanded and protected 2023)

Storage rack installed in ceiling for fishing poles and boat hooks EPIRB mounted behind seating area

Additional grab hand rails on Starboard and Port winches and handles for sailing

Large storage area under seating

Sheet bag (2023)

Trampoline - black (2023)

Enclosures cockpit side and aft (Sunbrella)

Fresh Water System for dock water

Dedicated Cooking Gas Storage

Hot and Cold Transom Shower

Exterior Speakers

Underwater lights

Hard Bimini top with windscreen at helm

Outboard engine bracket on pushpit

Bow Pulpits

Helm seat cushions Dark Grey Dinghy hoist system

Electric seawater pump

Deck wash pump sea water / fresh water

Freshwater dock inlet

Paddle board and kayak storage brackets on Starboard stantions

Electronics & Navigation

Depth sounder Airmar

Speed log Airmar

B&G Wind instruments

B&G Zeus3 12" Display at helm station

B&G Zeus3 12" Display at Nav station

AIS 500 Transceiver with antenna

Autopilot remote

B&G Navigation package from Lagoon

Fusion sound system with 2 loudspeakers in salon and 2 loudspeakers in the cockpit

Iridium Go plus exterior mounted antennae

Starlink satellite with router (110v) (2023)

VHF Radio with B&G V-60-B AIS/VHF unit (10/2024)

VHF V-60 handheld with charging dock at helm (10/2024)

Electrical, Power & Plumbing

Onan Genset 13.5Kva 110V/ 60Hz +Cocoon (850hrs)

900amp hours of Lithium batteries (2020)

Victron Multiplus 3000W 12V sine wave inverter and 120amp battery charger (2023)

Victron Cerbo control station mounted to the navigation station (2023)

Victron charger for maintaining engine batteries (2023)

Victron MPPT 100/100 Victron MPPT 150/60 Solar capacity of 1680W

Solar panels 4 x 320W solar panels with custom SS Arch (2020)

Solar panel 1 x 400W solar panel mounted on deck roof (2023)

Battery charger for generator

220V/50amp shore power plug and cord for use while docked

Rainman Watermaker - AC version - 32 GPH (2021)

Splendide Washing machine combo dryer

4 separate A/C units 110V 6 x 12V fans

4 Dometic Reverse Cycle Units.

Port forward cabin 8,000 BTU

Port Aft Cabin 8,000 BTU

Saloon 16,000 BTU

Starboard Hall 12,000 BTU

All units can run off generator and shore power.

Engine & Mechanical

Engines 2 x Yanmar 4JH57SD (Horsepower 2 x 57Hp) upgraded version - 1300 hrs (serviced 1/2025)

Propellers 3 blade folding

SailDrive SD60's (serviced June 2024)

Spare parts, filters, & fluids

Automatic fire suppression in each engine room (5/2024)

Complete service log

Sails & Rigging

Mast material aluminium Standing rig material stainless steel

Dacron square top mainsail in lieu of standard - inspected July of 2023

Jib on furler 35sqm, self-tacking - inspected July of 2023

Code G with UV strip, on furler (2023)

Spinnaker that has never been used - inspected in 2022

Bowsprit 90 cm (use with Code G)

Winches Harken 1x electric & 1x manual at helm station, 2 manual port/starboard aft

Sail bag (2023)

All necessary lines and sheets ready to sail

Spare pulleys, halyards, shackles and misc. parts

Additional Information

Bilge pumps 2 x manual, 2 x automatic

Life Raft(certified 5/24)

Life jackets 4 x adult offshore

Life ring

EPIRB (new 2024)

3 USCG approved Fire extinguishers(serviced 5/24)

Fire blanket Ditch bag

Smoke alarms

Bilge alarms

CO alarm

Horn - portable

Anchor Rocna 33kg

Spare anchor

Delta 25kg Chain - 250 feet of chain with additional 50 feet of rode

Bridle with Mantus 3/8" chain hook

Windlass Lofrans X2, 1000W with remote

Mooring lines/fenders, various Windless hardwired remote

All safety equipment was inspected and recertified (5/2024)

3 coats of interlux bottom paint (5/2024)

Image Gallery















































Cummins Onan Generator

NO
50A
DC CIRCUIT BREAKERS

8689
HOURS 1/10

EMERGENCY STOP



MDKDK/L/M/N

SERVICE DATA


Fuel filter	A026K278	
Oil filter	0185-5835	
Sea water pump		
Impeller	0132-0498	
Zinc Impeller/O-Ring Kit	0541-1519	
V-belt	0130-4434	
	0185-6934	
CAPACITIES		
Oil with filter	MDKDK/L 4.0 ltr (4.2 qt)	MDKDM/N 4.3 ltr (4.5 qt)
Engine coolant		

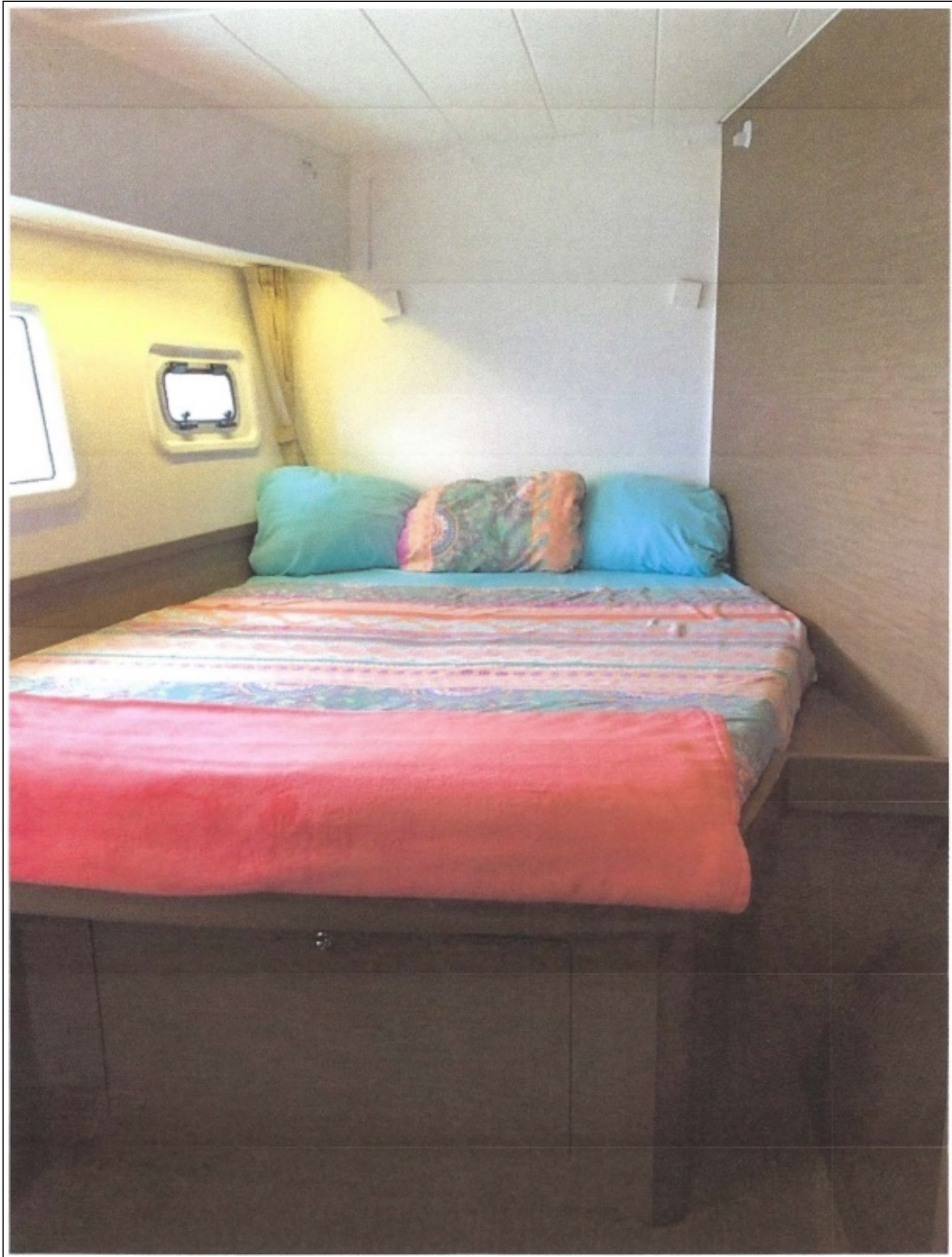






YAMAHA
6HYK F20SMHB
S 1016629
YAMAHA MOTOR CO., LTD.
MADE IN JAPAN
PAYS D'ORIGINE JAPON

CAN ICES - 2 / NMB - 2










































Disclaimer

The Company offers the details of this vessel in good faith but cannot guarantee or warrant the accuracy of this information nor warrant the condition of the vessel. A buyer should instruct his agents, or his surveyors to investigate such details as the buyer desired validated. This vessel is offered subject to prior sale, price change, or withdrawal without notice. Photos may not properly reflect the current condition of the actual vessel offered for sale. In some cases stock photographs may have been used.

Mechanical Disclaimer

Engine and generator hours are as of the date of the original listing and are a representation of what the listing broker is told by the owner and/or actual reading of the engine hour meters. The broker cannot guarantee the true hours. It is the responsibility of the purchaser and/or his agent to verify engine hours, warranties implied or otherwise and major overhauls as well as all other representations noted on the listing.

Dinghy Disclaimer

All dinghies are considered separate vessels and should have separate titles and documents. There is no guarantee as to the title of the dinghy on this vessel so Buyer accepts that while he may receive the dinghy included in the transaction, he may not receive the proper title to it.