



Basic Vessel Summary

Manufacturer:	FOUNTAINE PAJOT
Model:	FP Tanna 47
Model Year:	2026
Type of Yacht:	Sail
Price:	Price on Application
Condition:	Brochure
Status:	Catamaran for Sale
Location	France
Manuf. Length:	45' 7" (13.89 m)
Maximum Draft:	3' 9" (1.14 m)
Beam:	25' 3" (7.70 m)
Electric Circuit:	110 volt
Fuel Capacity:	2 x 124 g
Water Capacity:	185 g
Weight - Displacement:	14.72 ton (29440 lb)

Hull Material:	Fiberglass Reinforced Plastic- FRP
Hull Configuration:	Catamaran
Engine Manufacturer	Volvo
Engine Model	D2
Engine Year	2025
Engine Horsepower	40
Engine Type	Inboard
Engine Configuration	Twin
Engine Fuel Type	Diesel
Engine Condition	New
Does the boat have a generator?	No
Does a dinghy come with the boat?	No

[Boat Description:](#)

The Fountaine Pajot Tanna 47 is a luxurious and high-performance sailing catamaran designed for comfort, efficiency, and adventure.

Purchase for Charter Only.

With a spacious five-cabin layout, each featuring an en-suite bathroom, this 47-foot catamaran offers exceptional accommodations for long voyages or charter experiences. The expansive flybridge provides a stunning panoramic lounge area, perfect for relaxation and entertainment, while the modern galley and large salon create a welcoming space for dining and socializing. Equipped with energy-efficient solar panels, this vessel ensures sustainable cruising without compromising on comfort. Designed for smooth and stable sailing, the Tanna 47 delivers both speed and reliability, making it ideal for coastal cruising or exploring remote destinations.

Whether you're an experienced sailor or looking for a turn-key investment opportunity, this Fountaine Pajot Tanna 47 is an outstanding choice. Don't miss the chance to own this exceptional catamaran—contact us today!

Full Specification

[Layout & Accommodations](#)

General characteristics:

Alpi woodworking

Salon / Cabins flooring: Timber-laid floor
Lining on rotproof glass felt
Seat cushions
Polyether foam mattresses

Saloon Layout:

Accessible via a single-leaf sliding door with carpeted entrance
Panoramic view through picture windows
Natural lighting via 2 glass panels
1 veneered table
6 places bench seat
Large storage boxes under the bench
Ventilation via to 2 large front opening hatches
Main lighting system by 5 spotlights

QUINTET VERSION:

5 cabins & 5 independent bathrooms.
Starboard hull: 2 double cabins + 2 bathrooms A-3-1.1 Companionway
A companionway behind the saloon gives access to the starboard hull
Wooden staircase
Lighting via 2 spotlights

Cabin:

Access from the companionway via a wooden door
Queen-size Island Bed (1,60x2,00 m approx)
Drawer below the bed with frontal access
Bedside shelves
Wardrobe
Cupboard with shelves in it
Ventilation via a deck hatch + and 1 hull porthole
Rear panoramic window
Large picture-window on hull side
Curtains to all windows
Main lighting via 2 spotlights & 2 berth lights
1 Bedside two-way switch
Clothes hooks
Lining covered ceilings

Fore & aft bathrooms:

- Access via wooden door
- Washbasin with worktop
- Mirror with shelf
- Hot and cold freshwater system from mixer faucet
- Shower separated via a Plexiglas panel
- Electric drainage pump
- Mixing valve tap for shower
- Large manual marine toilet
- Storage closet with shelves under the worktop
- Clothes hooks
- Ventilation via 1 deck hatch
- Lighting via 2 spotlights

Fore cabin:

- Access from the companionway via a wooden door
- Queen-size Island Bed/ Double bed (1,60x2,00 m approx)
- Drawer below the bed with frontal access
- Wardrobe
- Cupboard with shelves in it
- Ventilation thanks to a deck hatch + 1 hull porthole
- Large picture-window on hull side
- Curtains to all windows and doors
- Main lighting via 2 spotlights & 2 berth lights
- 1 Bedside two-way switch
- Clothes hooks
- Lining covered ceilings

Fore peak:

- Access from the forward cabin or the deck hatch
- Fully-painted, gel-coat finish
- Buoyancy reserve under half-height shelf

Port hull: 3 double cabins + 3 bathrooms A-3-2.1 Companionway

- A Companionway behind the saloon gives access to the starboard hull The central & fore cabins though a companionway ahead of the saloon
- Wooden staircase
- 1 spotlight

Aft cabin:

- Access from the cockpit though Plexiglas door including keylock

Queen-size bed (1,60x2,00 approx.)
Drawer below the bed with frontal access
Wardrobe
Cupboard with shelves in it
Ventilation thanks 1 hull porthole
Picture-window on hull side
Curtains to all windows and doors
Lining covered ceilings
Main lighting via 2 spotlights & 2 berth lights
1 Bedside two-way switch
Clothes hook

Aft bathroom:

Access via wooden door
Washbasin with worktop
Mirror with shelf
Hot and cold freshwater system from mixer faucet
Electric drainage pump for greywater
Mixing valve tap for shower
Large manual marine toilet
Storage closet with shelves under the worktop
Clothes hooks
Ventilation thanks to 1 deck hatch
Lighting via 2 spotlights

Central cabin:

Access from the companionway via a wooden door
2 single bunk beds (0.9 x2,00 approx.)
Drawer below the bed with frontal access
Wardrobe
Ventilation thanks to a deck hatch + 1 hull porthole
Large picture-window on hull side
Curtains to all windows and doors
Main lighting via 2 spotlights & 2 berth lights
1 Bedside two-way switch
Clothes hook
Lining covered ceilings

Central bathroom:

Access via wooden door from the companionway
Washbasin with worktop

Mirror with shelf
Hot and cold freshwater system from mixer faucet
Electric drainage pump for greywater
Mixing valve tap for shower
Large manual marine toilet
Ventilation

Fore Cabin:

Access from the companionway via a wooden door
Queen-size Island Bed (1,60x2,00 m approx)
Drawer below the bed with frontal access
Wardrobe
Ventilation thanks to a deck hatch and 1 hull porthole
Large picture-window on hull side
Curtains to all windows and doors
Main lighting via 2 spotlights & 2 berth lights
1 Bedside two-way switch
Clothes hook
Lining covered ceilings

Forward bathroom:

Access via wooden door
Washbasin with worktop
Mirror with shelf

Hot and cold freshwater system from mixer faucet
Shower separated via a Plexiglas panel
Electric drainage pump for greywater
Mixing valve tap for shower
Large manual marine toilet
Storage closet with shelves under the worktop
Clothes hooks
Ventilation thanks to 1 deck hatch
Lighting via 2 spotlights

Forepeak:

Access from the forward cabin
Fully-painted, gel-coat finish
Buoyancy reserve under half-height shelf

MAESTRO VERSION:

1 Owner's suite + 1 double cabin to port & 2 double cabins to starboard

Starboard hull: 2 double cabins + 2 bathrooms

Companionway

A companionway behind the saloon gives access to the starboard hull

Wooden staircase

Lighting via 2 spotlights

Aft Cabin:

Access from the companionway via a wooden door

Queen-size Island Bed (1,60x2,00 m approx)

Drawer below the bed with frontal access

Bedside shelves

Wardrobe

Cupboard with shelves in it

Ventilation via a deck hatch and 1 hull porthole

Rear panoramic window

Large picture-window on hull side

Curtains to all windows

Main lighting via 2 spotlights & 2 berth lights

1 Bedside two-way switch

Clothes hooks

Lining covered ceilings

Fore & aft bathrooms:

Access via wooden door

Washbasin with worktop

Mirror with shelf

Hot and cold freshwater system from mixer faucet

Shower separated via a Plexiglas panel

Electric drainage pump

Mixing valve tap for shower

Large manual marine toilet

Storage closet with shelves under the worktop

Clothes hooks

Ventilation via 1 deck hatch

Lighting via 2 spotlights

Fore cabin:

Access from the companionway via a wooden door
Queen-size Island Bed/ Double bed (1,60x2,00 m approx)
Drawer below the bed with frontal access
Wardrobe
Cupboard with shelves in it
Ventilation thanks to a deck hatch and 1 hull porthole
Large picture-window on hull side
Curtains to all windows and doors
Main lighting via 2 spotlights & 2 berth lights
1 Bedside two-way switch
Clothes hooks
Lining covered ceilings

Fore peak:

Access from the forward cabin or the deck hatch
Fully-painted, gel-coat finish
Buoyancy reserve under half-height shelf

Port hull: 1 Owner's suite + 1 double cabin & bathroom

Access to the Owner's cabin through a wooden sliding door

Owner's cabin –Sleeping area:

Queen-size Island Bed (1,60x2,00 m approx)
Drawer below the bed with frontal access
Bedside shelves
Wardrobe
Cupboard with shelves in it
Ventilation thanks to a deck hatch and 1 hull porthole
Rear panoramic window
Large picture-window on hull side
Curtains to all windows and doors
Main lighting via 2 spotlights & 2 berth lights
1 Bedside two-way switch
Clothes hooks
Storage compartment under the berth

Owner's cabin – Office area :

Desk with storage cabinet
1 seat
Storage cabinet below the desk

Large storage furniture: hanging closet, cupboard and wardrobe

Library wall niche

Main lighting via 3 spotlights & 1 berth light

Ventilation via 1 deck hatch

Lining covered ceilings

Owner's cabin - Bathroom :

Washbasin with worktop

Mirror with shelf

Hot and cold freshwater system from mixer faucet

3 storage cupboard with shelves

Storage closet with shelves under the worktop

Ventilation via 1 deck hatch and 1 hull porthole

Shower separated via a Plexiglas panel

Mixing valve tap for shower

Electric drainage pump for greywater

Lighting via 3 spotlights

Clothes hooks

Independent WC:

Access from the bathroom

Manual W.C.

Toilet roll bracket

Ventilation by 1 deck hatch

Lighting by LED spotlight

Forepeak:

Access from the WC

Fully-painted, gel-coat finish

Buoyancy reserve under half-height shelf

Galley

Galley opened to the outside thanks to a sliding bay

Ventilation via 1 opening hatch above stove top

Worktop

Twin stainless-steel sinks

Pressurized hot and cold freshwater system from mixer faucet

1 x 4 burner stove with pan holder

1 stainless gas oven

- 190L cold storage volume (12V) on the port side
- 1 storage behind the burner stove
- 1 cupboard under the burner stove
- 1 drawer and a cupboard to receive a microwave oven
- 1 large cupboards under the sinks accommodating a dishwasher (optionally)
- 1 cutlery drawer, 2 drawers for pots & pans
- 1 cupboard
- 1 dustbin by vertical access, evacuation of bags by independent door
- 1 large storage cupboard on the starboard side of the entrance that can accommodate a maximum volume of 130L/34gals in refrigeration mode or 90L/24gals in conservation mode
- storage spaces underneath the floor
- 4 spotlights

Chart Table:

- High navigation instrument console
- One 12V electric outlet
- storage with flap cover
- Lighting via 1 spotlight & 1 reading lamp for the chart table

Deck & Equipment

Helm station:

- Access through staircase from the cockpit
- Triple helmsman seat
- Instrument console
- 360° view / All-round visibility
- Access to the Lounge deck through staircase

Lounge deck:

- Access via staircase from wheelhouse
- Available area for solarium and mattresses
- Visibility 360°
- Lounge with large sofa

Cockpit:

- Large cockpit: Circulation without threshold towards the saloon.
- Access via the transom platforms
- Transom platform with swimming ladder (at port) & handrail
- 1 cold shower in the port platform

GRP Bimini protecting all the cockpit
8 seats sofa around the table
1 Teck cockpit table with a capacity of 8 places (10 places in option)
Serving hatch to the galley via sliding bay
1 Large storage area under the sofa
1 fainting sofa with large storage locker
1 Transom sofa with large storage locker
1 Gas chest for 2 bottles
Space on starboard side for a cockpit 75L fridge
Additional ventilation and lighting via 1 deck hatch
Lighting via 2 waterproof spotlights
Space available for a barbecue on starboard side aft of the cockpit

Fore-deck saloon:

1 Large chest giving access to windlass and anchor as well as water tanks
Relaxation area with U-shaped sunbed (cushions optional)

Helm station:

1 mainsheet tackle led aft to coach roof
1 clutch for mainsail sheet
1 clutch for the mainsail halyard
1 clutch for the spinnaker
1 clutch for the topping lift
Clutches on all halyards for genoa, spinnaker and topping lift
3 clutch for the reef lines
1 size 50 self tailing winch for mainsail sheet
1 size 50 self tailing winch for mainsail halyard and reef lines
1 size 55 self tailing winch for genoa sheet
1 Ball bearing mainsheet traveler
2 x tackle on mainsheet traveler clutches with back on roof
2 x genoa tracks with load block
2 genoa sheets
1 halyard storage bag

Steering System

2 foam sandwich rudders on stainless steel rudder stock
Hydraulic steering system with manual pump and 1 cylinder (starboard side)
Rudders linked mechanically by stock arm + transversal tube

Aluminum stern tubes
Self lining upper and lower rudderstock bearings
Emergency tiller

Electronics & Navigation

1 V.H.F mast head antenna
Connected boat

Electrical, Power & Plumbing

Freshwater:

2 Freshwater tanks in the technical compartment at bow (700L total capacity) with
1 Electric gauge at chart table
1 Electric pump and pressure accumulator
1 Mixed water heater 40l in port hull
Available space for an additional water heater 40l in the starboard hull

Grey water and black water:

Shower drainage via individual shower pump (automatic pump-out).
1 holding tank.

Bilging system:

1 electric bilge pump (2m³/h) in each engine room
1 electric bilge pump (2m³/h) in each hull
1 manual exterior bilge pump

E-1 Power circuit:

2 x 115A/12V engine alternators
1 set starboard onboard/engine batteries of 600A/h (4 x 150 Ah)
1 port engine battery of 50A/h/ 800CCA
1 automatic back-up link and 1 Manual back-up link

12V Electrical Distribution Panel:

General 12V distribution panel at chart table protected via circuit breakers
Voltmeter for onboard batteries

Spare sockets for extra equipment
All accommodation lightings LED

Engine & Mechanical

Engine holds:

Access via polyester deck hatch installed on stainless steel gas cylinders

Sound proofing

Neon lighting

Engines & Equipments:

2 Saildrive Volvo engine D2- 40CV

3 Blades fixed propeller

Salt water filters

Engine cooled via heat exchanger

Complete engine panel and dual controls at helm station

Hour meter

Fuel System:

1 Fuel tank 470L in each hull - fuel filling on both side decks including backflow protection device

2 Electric fuel gauge (indicator at chart table)

1 Fuel pre-filter / water separator + 1 engine fuel filter / engine

Fuel shut-off valves

Sails & Rigging

Mast & Boom:

Mast and boom in anodized aluminum

Complete standing rigging

Ball bearing mainsail luff cars

1 tackle on mainsail halyard

1 topping lift

3 reef pennants

1 genoa halyard and clutch

1 spinnaker halyard

Lazy-jack
2 flag halyards
Navigation, running and mooring lights
Deck lighting

Full batten CSR mainsail
Roller genoa fuller
Genoa with UV band

Additional Information

1 steering compass
3 winch handles with their 2 pockets
Pulpit and pushpit, stanchions with upper and lower guardrails
Pulpits with bow pulpit seats
Access to transom
2 x tender davits with 1 x size 46 winch on port side
7 mooring cleats (2 foredeck + 2 middle + 2 astern + 1 in anchor well)
6 fenders
2 x 50 ft long mooring lines
1 x 1500W electric windlass with circuit breaker protection
Anchor fairlead under bridge deck with built-in bridle
1 roller on forward beam
Net on forward beam
1 kit of spare parts

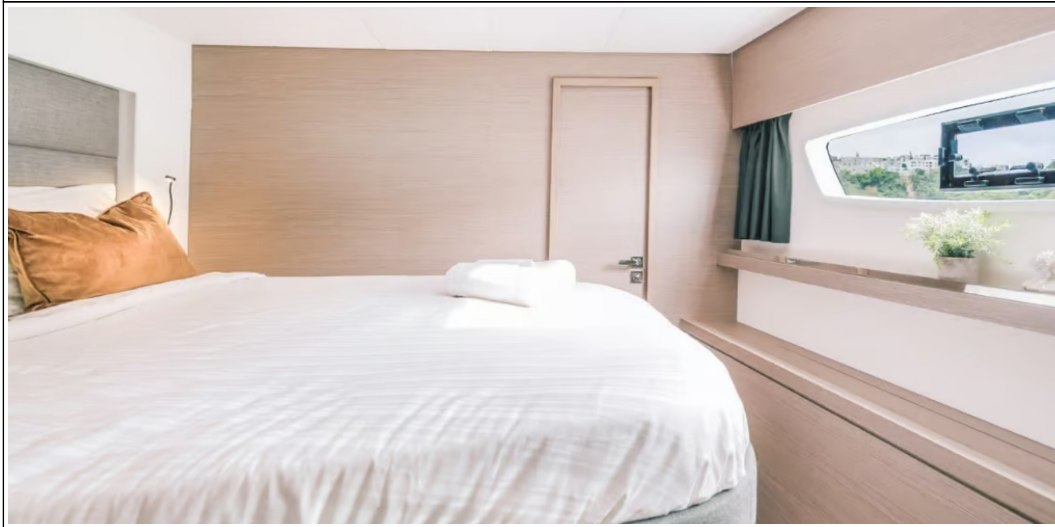
Image Gallery

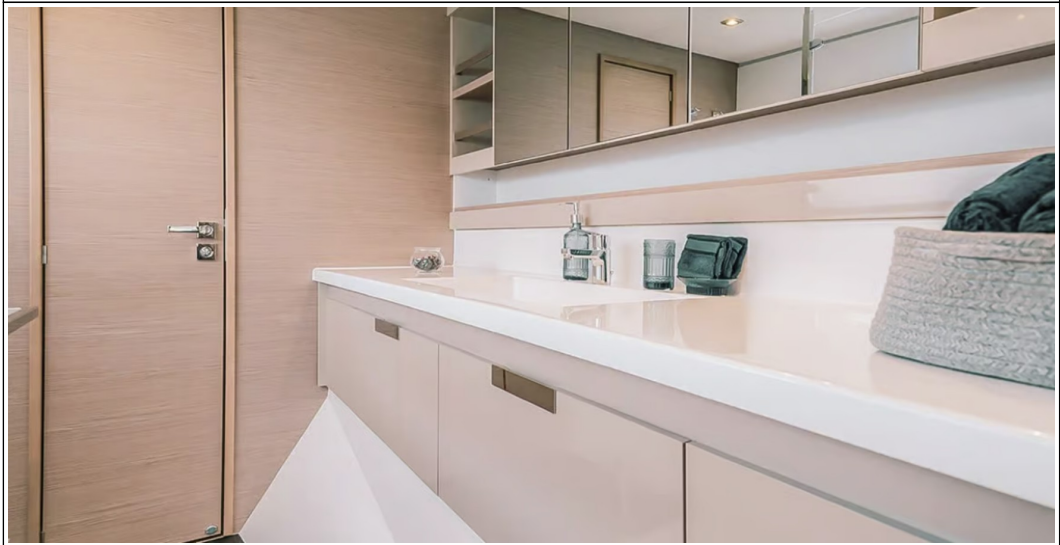
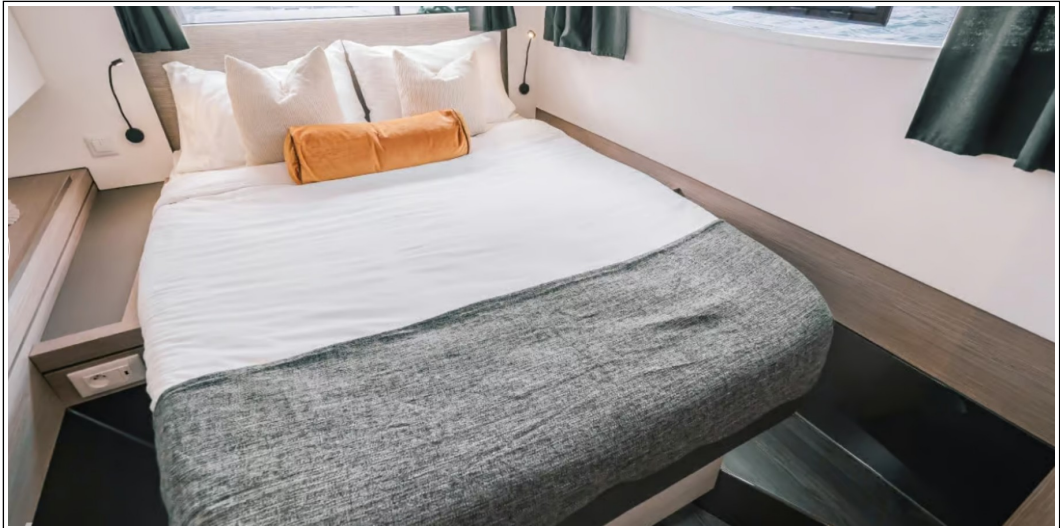








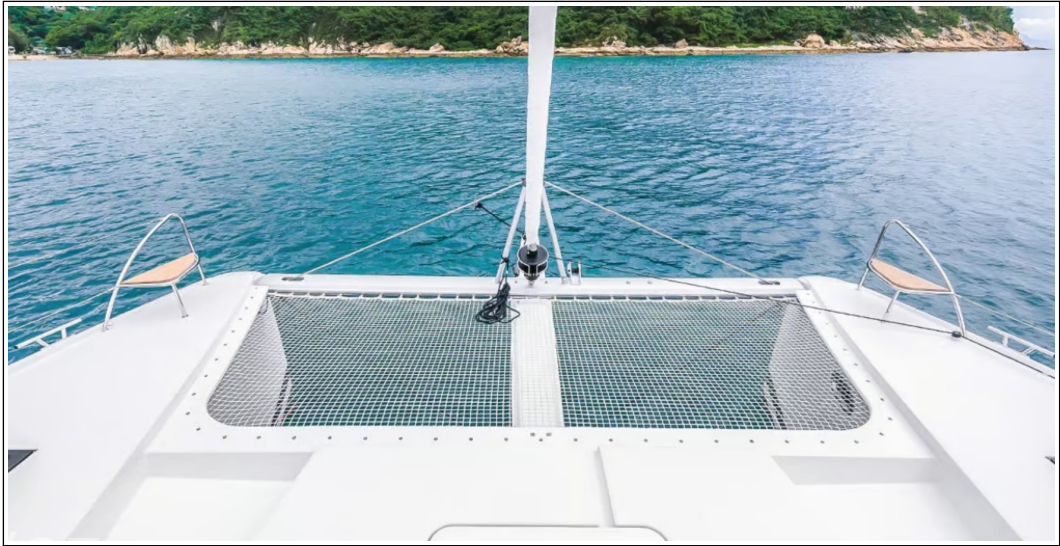


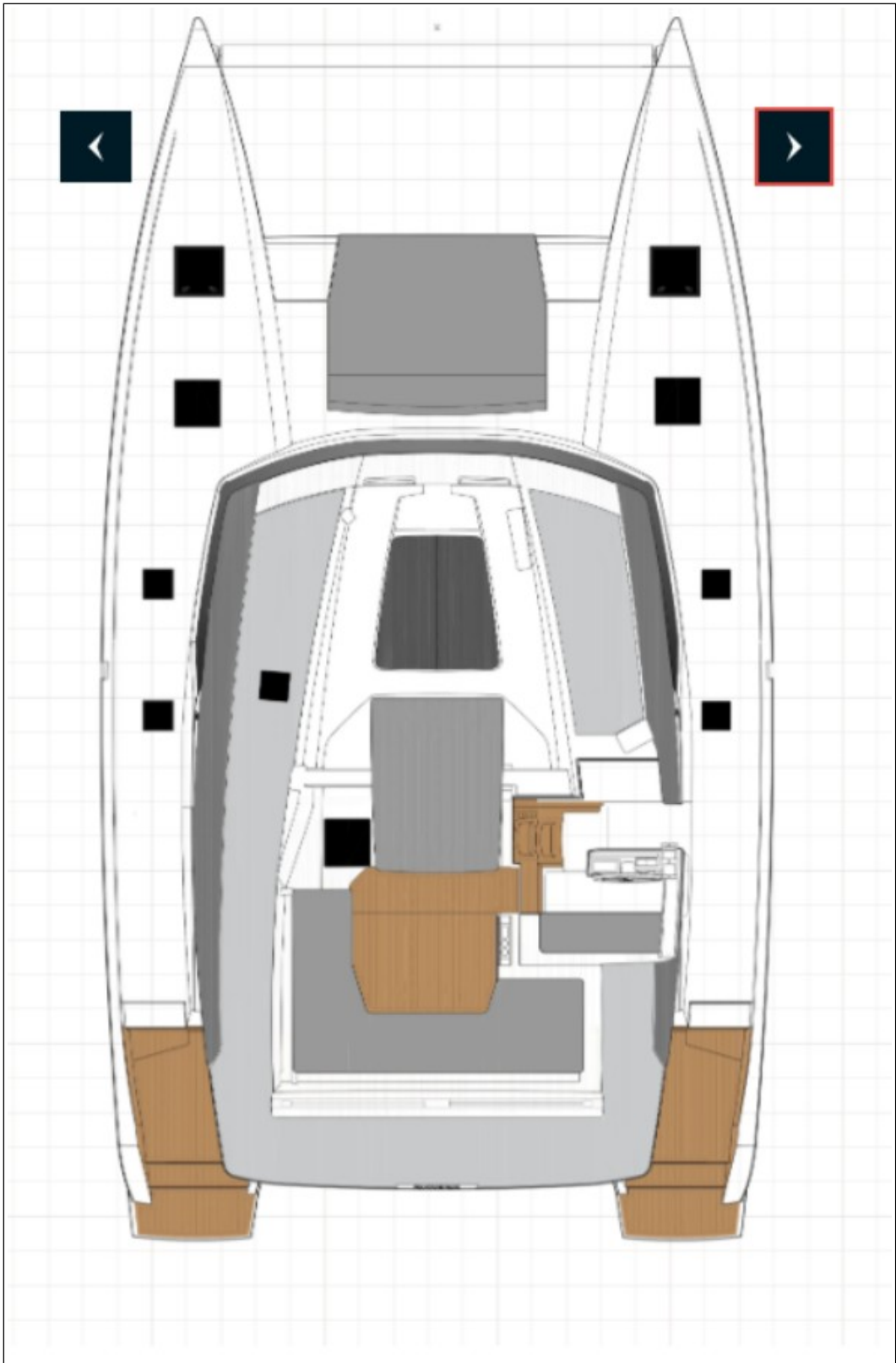


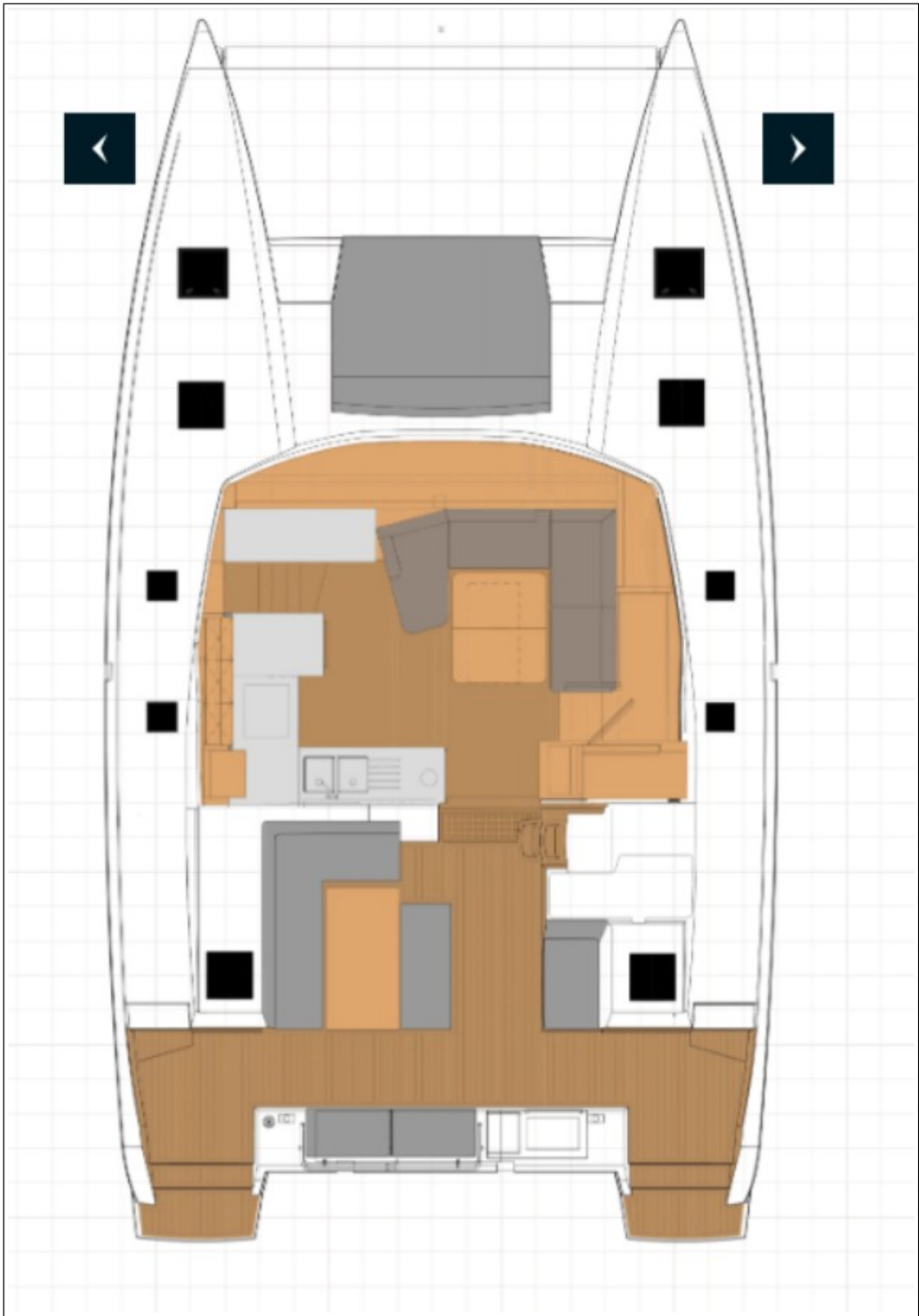


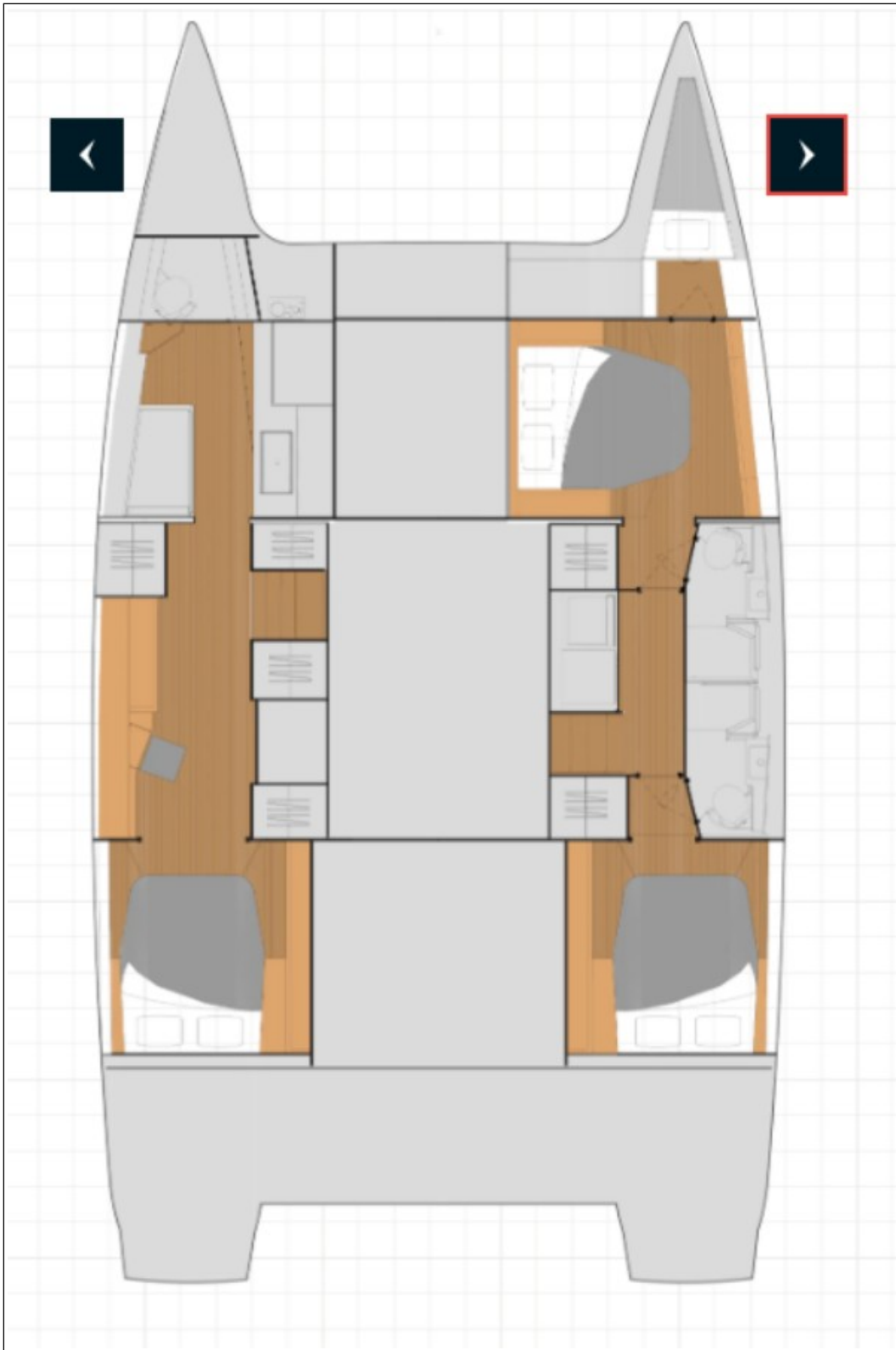












Disclaimer

The Company offers the details of this vessel in good faith but cannot guarantee or warrant the accuracy of this information nor warrant the condition of the vessel. A buyer should instruct his agents, or his surveyors to investigate such details as the buyer desired validated. This vessel is offered subject to prior sale, price change, or withdrawal without notice. Photos may not properly reflect the current condition of the actual vessel offered for sale. In some cases stock photographs may have been used.

Mechanical Disclaimer

Engine and generator hours are as of the date of the original listing and are a representation of what the listing broker is told by the owner and/or actual reading of the engine hour meters. The broker cannot guarantee the true hours. It is the responsibility of the purchaser and/or his agent to verify engine hours, warranties implied or otherwise and major overhauls as well as all other representations noted on the listing.

Dinghy Disclaimer

All dinghies are considered separate vessels and should have separate titles and documents. There is no guarantee as to the title of the dinghy on this vessel so Buyer accepts that while he may receive the dinghy included in the transaction, he may not receive the proper title to it.