

## 2010 Havana 38 BOBCAT



### Basic Vessel Summary

<b>Manufacturer:</b>	CRUISER CATS
<b>Model:</b>	Havana 38
<b>Model Year:</b>	2010
<b>Year Built:</b>	2010
<b>Type of Yacht:</b>	Power
<b>Price:</b>	\$249,000
<b>Condition:</b>	Used
<b>Status:</b>	Executed Conditional Acceptance of Vessel
<b>Location</b>	Jacksonville Florida (FL)
<b>Manuf. Length:</b>	38' ( 11.58 m)
<b>Maximum Draft:</b>	3' 6" ( 1.07 m)
<b>Minimum Draft:</b>	3' ( .91 m)
<b>Beam:</b>	15' 9" ( 4.80 m)
<b>LWL:</b>	--' ( m)
<b>Mast Height Clearance:</b>	12' ( m)

<b>No. of berths:</b>	6
<b>No. of Cabins:</b>	3
<b>No. of Heads:</b>	2
<b>Electric Circuit:</b>	110 volt
<b>Fuel Capacity:</b>	400 g
<b>Water Capacity:</b>	150 g
<b>Holding tank:</b>	54
<b>Cruise speed:</b>	15
<b>Max speed:</b>	18
<b>Weight - Displacement:</b>	13.5 ton (27000 lb)
<b>Hull Material:</b>	Fiberglass Reinforced Plastic- FRP
<b>Hull Configuration:</b>	Catamaran
<b>Engine Manufacturer</b>	Yanmar
<b>Engine Model</b>	4BY2-180
<b>Engine Year</b>	2010
<b>Engine Horsepower</b>	180
<b>Engine Hours (Port)</b>	1571
<b>Engine Hours (Starboard)</b>	1569
<b>Engine Type</b>	Inboard
<b>Engine Configuration</b>	Twin
<b>Engine Fuel Type</b>	Diesel
<b>Engine Condition</b>	Used
<b>Does the boat have a generator?</b>	Yes
<b>Generator Model</b>	Kohler 6EKOD
<b>Generator Operating Hours</b>	596
<b>Generator Horsepower</b>	6
<b>Does a dinghy come with the boat?</b>	Yes
<b>Dinghy Model</b>	Mercury Dynamic 310 Hypalon
<b>Dinghy Length</b>	9'10"
<b>Dinghy Model Year</b>	2015
<b>Dinghy Outboard Manufacturer</b>	Torqeedo
<b>Dinghy Outboard Horsepower</b>	3
<b>Dinghy Outboard Year</b>	2019

### **Boat Description:**

Used Power Catamaran for Sale The BOBCAT is a semi-custom express power catamaran and was designed as such by Cruiser Cats in Cape Town, SA.

She is stout, very well built and is certified as CE Category A. She offers a comfortable bridge deck and helm station, outdoor seating areas, 3 separate sleeping accommodation areas, 2 heads, and a large salon table with seating. Lots of storage on this boat with about 20 lockers/compartments, a dozen drawers, and 6 overhead cabinets. As a semi-displacement design, operation is very efficient getting about 2.75 nm/pg at 8 kts, or plane out and cruise comfortably at 15 kts or so at better than 1 /nm/pg. BIG Advantage- With a

beam of less than 16', she fits into many marina slips that many other cats are too wide to make. Same for travel lifts since 18' is a common width. This can greatly simplify finding a home port, cruising accommodations, or haul out. With a draft of just over 3' and skeg-protected running gear, she has capabilities that many other catamarans can't match. The boat is clean, shiny, and in very good condition overall in and out. The cabin features cherry wood, is clean and fresh, with no moldy smell

This is an ideal boat to ENJOY THE STABILITY of a catamaran for doing the Great Loop, cruising the ICW, or spending time in the Bahamas!

## Full Specification

### Layout & Accommodations

Both hulls have the same layout of head compartments forward and aft cabins featuring vanity sinks and queen sized mattresses.

The port hull also has access to the master bunk, with king sized mattress and direct access that head compartment.

Also on the port hull is the electrical panel and storage locations.

The galley is in the starboard hull along with storage locations.

The salon center section has a large table with wrap around couch seating, a jump seat, and more storage.

Bridge deck layout has L shaped seating to port and the helm station to starboard.

The stern has U shaped seating around a table out beyond the hardtop.

There are 2 forward facing jump seats at the bow. 8 deck/cabin hatches with bug screens.

### Galley

The starboard hull has the galley down and includes a microwave, 2-burner electric cooktop, Isotherm refrigerator, SS pot +Keurig cup coffee maker, counter top ice maker, double SS sink.

Lots of storage space with 6 cabinets, 4 drawers, and 3 overhead compartments with sliding doors.

An Isotherm freezer is located adjacent in the salon and the bridge deck has a beverage cooler and a Magma grill.

### Deck & Equipment

Full hand rail system with port and starboard side pass-thru.

Cabin top handrails also.

Custom fixed davit for the dinghy at stern.

Folding swim ladder.

Anchorlift windlass with 165' chain and 20 kg Rocna, 15 kg SS plow anchor, and 45 lb Danforth anchor.

Mooring bridle. Spare rode, 8 double braid dock lines 15-55' and full storm lines. 6 Big B fenders, large poly ball, boat hook, cleaning brushes and sprayer.

Fiberglass dock boarding step.

Folding dog ramp. 12 PFDs and all USCG required items.

## Electronics & Navigation

Raymarine suite of Axiom 12 RV MFD, Quantum radar with foldable mast, Tri-data, P70 autopilot, DownVision transducer.

Fixed compass, Standard Horizon VHF/GPS, West Marine hand-held VHF, Fusion stereo with 2 cabin and 2 bridge speakers, LG TV, Eartech 'Marriage Saver' wireless comm headsets .

## Electrical, Power & Plumbing

50 amp shore power receptacle for 120 VAC service, 2 30amp shore power cords, Y-adapter, various 15 amp to 50 amp adapters.

Fail-Safe galvanic isolator, Mastervolt Mass Combi 2500 inverter/charger, Sterling alternator controllers, 6 AGM house batteries for 660ah house bank, 3 AGM start batteries and a ProMariner charger for the genset battery.

Shore/Gen grounding rotary selector.

16k and 12k Webasto reverse-cycle air conditioners with 7 outlets in interior and 2 on the bridge, 8 12vdc fans, and removable sun screens over all cabin windows.

2 Xylem VARIABLE DISPLACEMENT fresh water pumps, deck washdown at bow, h/c shower at stern boarding area, Isotherm and Nautica water heaters.

6 Rule bilge pumps with float switches, 2 manual bilge pumps, 2 Rule shower sump pumps.

Fresh water heads, Raritan Elegance and Matro.

6 portable fire extinguishers throughout the cabin.

4 carbon monoxide detectors.

## Engine & Mechanical

Yanmar 4BY2-180s have less than 1600 hours and regular service has been done by Authorized Yanmar providers.

Engines have good access front and aft and fair access on the sides.

The vast majority of engine hours have been with the boat operating in displacement mode, i.e. in the half-throttle range.

The running gear has skeg protection for the 4 blade props.

New cutlass bearings were just installed.

Fire Boy automatic fire systems in engine rooms.

Kohler 6EKOD generator with about 600 hours and has been serviced by Authorized Kohler providers.

The steering system has a Capilano helm pump and L&S rams with a custom exotic hardwood steering wheel.

A 4 unit Zipwake interceptor system provides dynamic trim and was an upgrade from the original Volvo Penta system.

### [Additional Information](#)

Major improvement- All of the cabin plexiglass windows have been replaced with marine rated glass by Ocean Dynamics. Re-bedding was also done in 2024.

NOTE that the majority of items listed in the sections above have been replacements or upgrades to the OEM original equipment.

Image Gallery



















































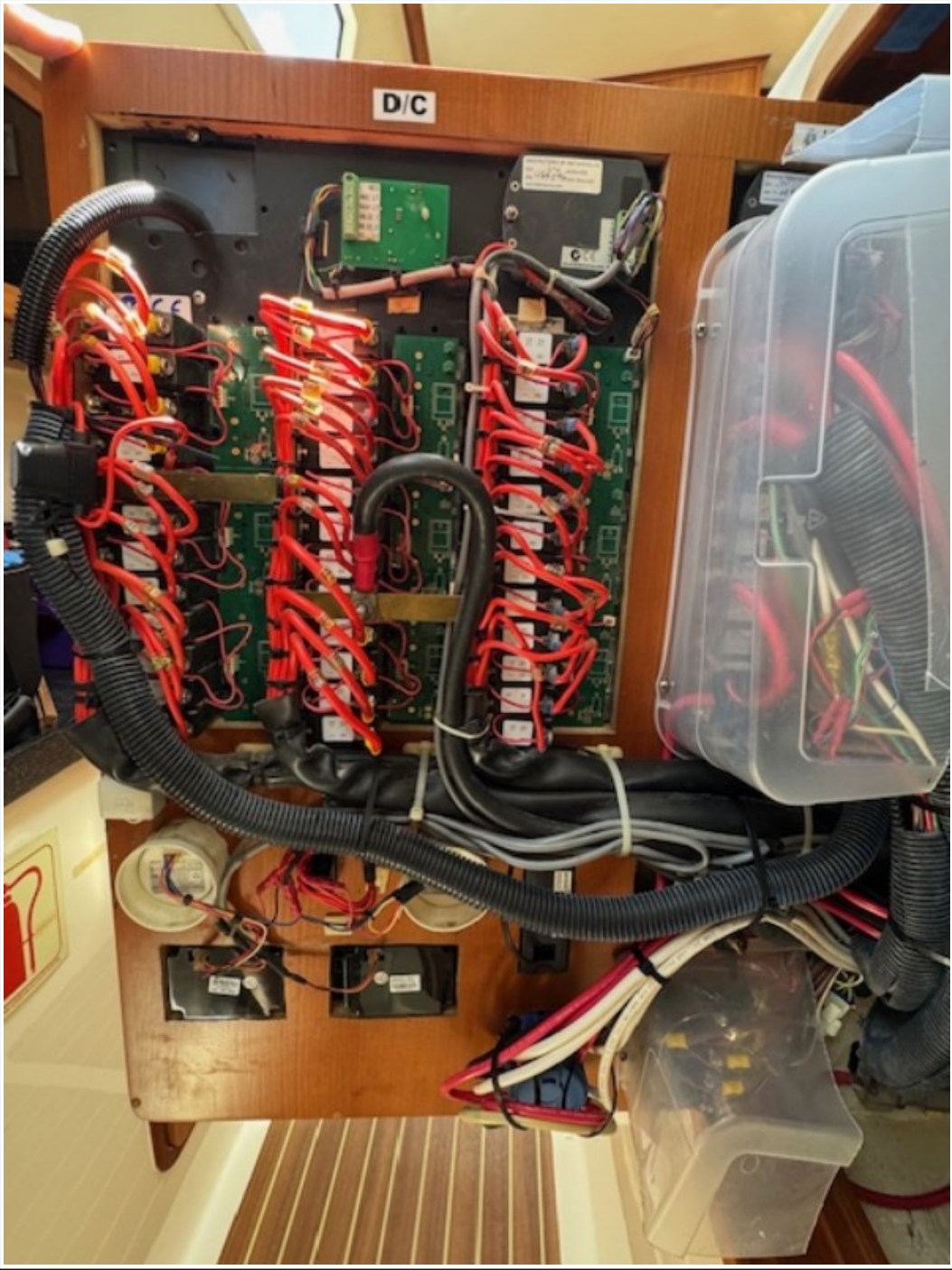










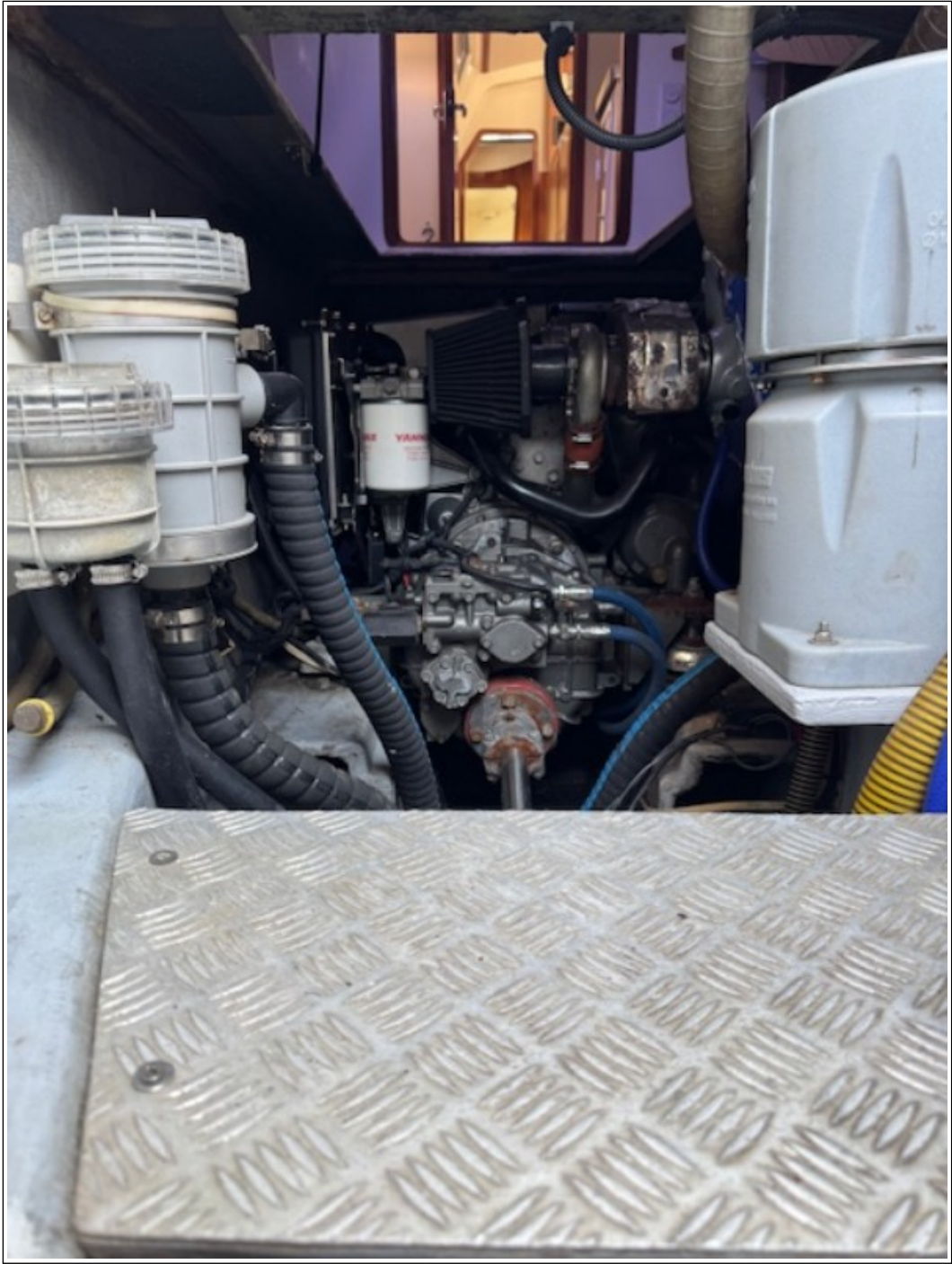




















### **Disclaimer**

The Company offers the details of this vessel in good faith but cannot guarantee or warrant the accuracy of this information nor warrant the condition of the vessel. A buyer should instruct his agents, or his surveyors to investigate such details as the buyer desired validated. This vessel is offered subject to prior sale, price change, or withdrawal without notice. Photos may not properly reflect the current condition of the actual vessel offered for sale. In some cases stock photographs may have been used.

### **Mechanical Disclaimer**

Engine and generator hours are as of the date of the original listing and are a representation of what the listing broker is told by the owner and/or actual reading of the engine hour meters. The broker cannot guarantee the true hours. It is the responsibility of the purchaser and/or his agent to verify engine hours, warranties implied or otherwise and major overhauls as well as all other representations noted on the listing.

### **Dinghy Disclaimer**

All dinghies are considered separate vessels and should have separate titles and documents. There is no guarantee as to the title of the dinghy on this vessel so Buyer accepts that while he may receive the dinghy included in the transaction, he may not receive the proper title to it.