

1992 Sunstar 32 MARI ROSE



## Basic Vessel Summary

<b>Manufacturer:</b>	SOLARIS
<b>Model:</b>	Sunstar 32
<b>Model Year:</b>	1992
<b>Year Built:</b>	1992
<b>Type of Yacht:</b>	Sail
<b>Price:</b>	\$89,500
<b>Condition:</b>	Used
<b>Status:</b>	Catamaran for Sale
<b>Location</b>	West Palm Beach Florida (FL)
<b>Duties:</b>	NOT FOR SALE IN US WATER TO USA CITIZENS OR RESIDENTS
<b>Manuf. Length:</b>	31' 10" ( 9.70 m)
<b>Maximum Draft:</b>	3' ( .91 m)
<b>Minimum Draft:</b>	2' ( .61 m)
<b>Beam:</b>	17' 3" ( 5.26 m)

<b>LWL:</b>	32' ( 9.75 m)
<b>No. of berths:</b>	5
<b>No. of Cabins:</b>	3
<b>No. of Heads:</b>	1
<b>Electric Circuit:</b>	110 volt
<b>Fuel Capacity:</b>	25 g
<b>Water Capacity:</b>	35 g
<b>Holding tank:</b>	13
<b>Cruise speed:</b>	7
<b>Max speed:</b>	7
<b>Weight - Displacement:</b>	6.6 ton (13,200 lb)
<b>Hull Material:</b>	Fiberglass Reinforced Plastic- FRP
<b>Hull Configuration:</b>	Catamaran
<b>Engine Manufacturer</b>	YANMAR
<b>Engine Model</b>	2GM20
<b>Engine Year</b>	1992
<b>Engine Horsepower</b>	16
<b>Engine Type</b>	Inboard
<b>Engine Configuration</b>	Twin
<b>Engine Fuel Type</b>	Diesel
<b>Engine Condition</b>	Used
<b>Does the boat have a generator?</b>	No
<b>Does a dinghy come with the boat?</b>	Yes
<b>Dinghy Length</b>	10
<b>Dinghy Model Year</b>	2000
<b>Dinghy Outboard Manufacturer</b>	MERCURY
<b>Dinghy Outboard Horsepower</b>	5
<b>Dinghy Outboard Year</b>	2025

### **Boat Description:**

A surprisingly capable cruising catamaran designed and built in England and sailed to Florida.

A solid build with a spacious layout suitable for liveaboard. This versatile multihull offers a rare combination of style and practicality and performance.

Three-cabin layout: Two generous aft doubles and a forward guest cabin. Bright, airy saloon on the bridge deck – ample space for relaxation or entertaining. Full-length galley with eye-level cooker for easy meal prep at sea. Has a dedicated head/shower, twin inboard diesel engines, Large cockpit with all lines at helm and excellent storage for its size. Reliable sailing rig is well-balanced and easily handled solo. Sturdy fiberglass construction with foam-cored topsides and a well thought out custom aluminum tube Bimini top addition with heavy duty davits are features of an overall quality construction.

This is a strong value for the price. Comes with a mooring in Palm Beach near Peanut island.

## Full Specification

### Layout & Accommodations

Two aft cabins with twin berths and a port forward cabin as well. The starboard forward cabin is a head.

### Galley

Full-length galley in the port hull with an eye-level cooker and propane appliances. Top-loading cold plate box located under the port bunk.

### Deck & Equipment

Manual windlass.

Power Survivor 12V watermaker.

### Electronics & Navigation

12" MFD.

The superb 1000W inverter.

### Electrical, Power & Plumbing

120V shore power.

Solar and inverter/charger.

### Engine & Mechanical

Diesel engines start well and do not smoke.

### Sails & Rigging

Full-batten main is serviceable.

Headsail recently replaced.

Symmetrical spinnaker.

### Additional Information

Custom aluminum tube Bimini top addition with heavy-duty davits.



Image Gallery











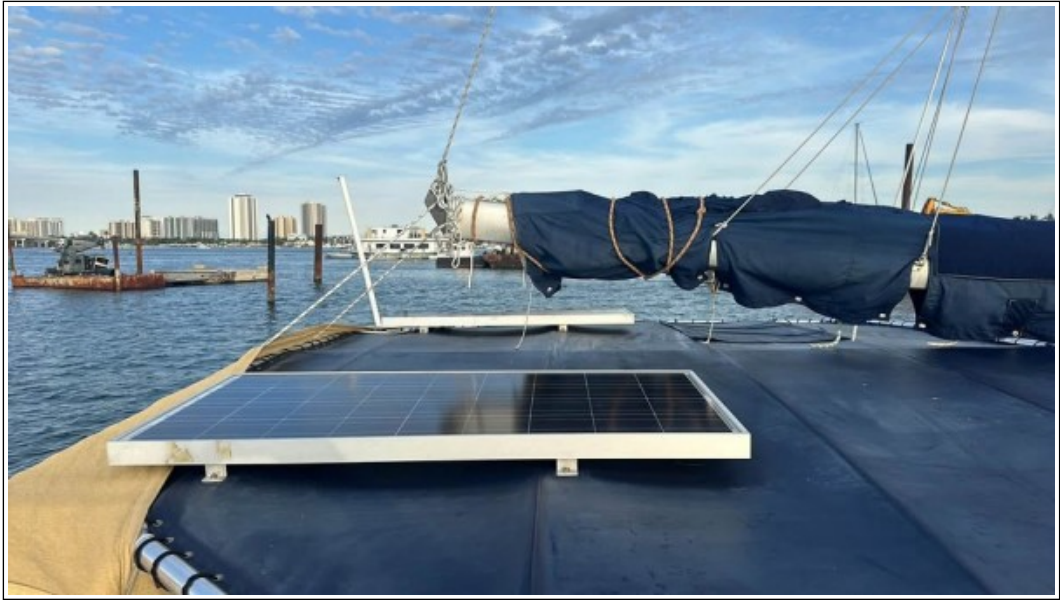














Distance to Dest 774ft  
Arrival 05:05 P.M.  
Off Course L191ft  
Bearing 263M  
GPS Heading 182°

GPS Position  
N 25°03.374'  
W 080°27.337'

GARMIN











**Disclaimer**

The Company offers the details of this vessel in good faith but cannot guarantee or warrant the accuracy of this information nor warrant the condition of the vessel. A buyer should instruct his agents, or his surveyors to investigate such details as the buyer desired validated. This vessel is offered subject to prior sale, price change, or withdrawal without notice. Photos may not properly reflect the current condition of the actual vessel offered for sale. In some cases stock photographs may have been used.

THIS VESSEL IS NOT FOR SALE IN US WATER TO USA CITIZENS OR RESIDENTS.

**Mechanical Disclaimer**

Engine and generator hours are as of the date of the original listing and are a representation of what the listing broker is told by the owner and/or actual reading of the engine hour meters. The broker cannot guarantee the true hours. It is the responsibility of the purchaser and/or his agent to verify engine hours, warranties implied or otherwise and major overhauls as well as all other representations noted on the listing.

**Dinghy Disclaimer**

All dinghies are considered separate vessels and should have separate titles and documents. There is no guarantee as to the title of the dinghy on this vessel so Buyer accepts that while he may receive the dinghy included in the transaction, he may not receive the proper title to it.