

2023 Bali 4.6 SEA DOG



Basic Vessel Summary

Manufacturer:	BALI
Model:	Bali 4.6
Model Year:	2023
Year Built:	2023
Type of Yacht:	Sail
Price:	\$794,000
Condition:	Used
Status:	Under Offer
Location	Road Town British Virgin Islands
Manuf. Length:	46' 11" (14.30 m)
Maximum Draft:	4' (1.22 m)
Minimum Draft:	4' (1.22 m)
Beam:	25' 1" (7.65 m)
LWL:	44' 5" (13.54 m)

Mast Height Clearance:	75' (22.86 m)
No. of berths:	8
No. of Cabins:	4
No. of Heads:	4
Electric Circuit:	110 volt
Fuel Capacity:	212 g
Water Capacity:	227 g
Holding tank:	80 gallons
Cruise speed:	7
Max speed:	9
Weight - Displacement:	16 ton (32000 lb)
Hull Material:	Fiberglass Reinforced Plastic- FRP
Hull Configuration:	Catamaran
Engine Manufacturer	YANMAR
Engine Model	4JH57
Engine Year	2023
Engine Horsepower	57
Engine Hours (Port)	861
Engine Hours (Starboard)	913
Engine Type	Inboard
Engine Configuration	Twin
Engine Fuel Type	Diesel
Engine Condition	Used
Does the boat have a generator?	Yes
Generator Model	Mase
Generator Operating Hours	3250
Generator Horsepower	11 kw
Does a dinghy come with the boat?	No

[Boat Description:](#)

Best priced Bali 46 catamaran for sale on the market with motivated seller.

Perfect liveaboard family cruiser or popular charter yacht income earner already in a top boutique catamaran charter fleet in the BVI. This excellent condition 2023 Bali 4.6 sailing catamaran offers the perfect blend of comfort, space, and efficient sailing capability for Caribbean or long-range cruising. It features a fully equipped galley-style L-shape kitchen, 4 double cabins with upgraded mattresses, and 4 spacious bathrooms. The large forward opening door and the Bali full width aft salon garage door lifts for cross-breeze flow and inside-out living, ideal for warm weather sailing. The flybridge and the foredeck offer exceptional living spaces overlooking the ocean, enhancing onboard comfort and outdoor entertainment. The Bali 4.6 is known for its 3 large living areas, each able to accommodate 8-10 people: a large solid foredeck cockpit accessible from the galley through a forward opening door, a covered flybridge with seating and sun pad, and the open concept salon

featuring the "Bali aft garage-door", creating one of the most spacious sailing catamaran layouts in this size range. The vessel includes an 11kW generator and solar panels, ensuring off-grid capability and self-sufficiency. It has 6 air conditioning units and a water-maker to keep you comfortable during extended stays. A plancha grill to provide additional options for cooking for your guests and crew. Other upgrades include a hard top bimini with LED lights and transparent canvas enclosure, underwater LED lights, electric winch, Code Zero, and 57hp Yanmar engines, making it ideal for both private owners and charter operations. Raymarine electronics including 12" Axiom chart plotter at the helm, 7" Axiom chart plotter at the nav station, P70s autopilot, Ray63 VHF, RayMic at helm, I70 Instrument Panel, AIS transceiver, and radar ensure a full navigation suite for safe offshore passages. It is currently earning income in the Catamaran Company's charter fleet in Tortola, BVI. It can come out of the fleet now or stay in earning income, providing great charter management flexibility.

Owner has enjoyed the ownership experience so much that he is planning for the purchase of a larger bluewater catamaran.

Full Specification

Layout & Accommodations

Saloon tilting bay/door electrically assisted by hydraulic struts

Double cabins with upgraded mattresses, and 4 spacious bathrooms

Staterooms:

Starboard Hull has 2 x Queen berth staterooms - each with ensuite heads.

Port Hull has 2 Queen berth stateroom

Separate shower compartments with dry heads.

It is perfect for warmer climates due to it's large interior space which with the press of a button converts to an airy single level outdoor living area with fwd salon door.

Salon:

Nav station to starboard with touch pad electronics.

Galley to port with full sized home-like fridge. freezer to starboard aft of Nav station

HUGE Salon aft with Settee and massive dining table featuring bench seating and chair seating

Large table with seating for 10 and interior storage compartments for your favorite games and bottles

Galley

Fully equipped L-shape galley

Full size House fridge freezer (615L) with chilled water, ice maker and dedicated inverter

Microwave

4 burner propane stove

Propane oven

Tons of storage in cabinets

Deck & Equipment

Hard top bimini over helm with LED lights and transparent canvas enclosure.

Covered area with wide bench seat and massive in floor storage.

Integrated plancha to starboard,

BBQ on pedestal to port.

With the press of a button the "Bali door" opens up the entire area to the salon.

Full beam rear deck gives easy access to tender.

Two large lazarettos on port and starboard for propane and shore power cords.

Wide sugar scoop transoms make boarding easy, swim ladder on starboard.

Anchor pack: Lewmar delta 70 lb w/ 250' chain.

Anchor Bridal 25 ft.

Windlass: Quick Electric windlass 1500W 12 v

Deck Shower

Lifting system for dinghy

Flybridge:

accessible by stairs from either side-deck,

the massive flybridge has helm offset to port,

all sailing controls centrally located at helm with electric winch for easy singlehanded sailing.

Hard top bimini with lights and custom enclosure with large windows and sliding panels.

Flybridge table with telescopic leg with seating for 6 and large sunpad aft

Integrated ladders allow easy access to mainsail.

Electronics & Navigation

Ray marine electronics including 12" Axiom chart plotter at the helm,

7" Axiom chart plotter at the nav station,

P70s autopilot,

Ray 63 VHF,

Ray-Mic at helm,

I70 Instrument Panel,

AIS transceiver, and radar.

Raymarine remote control for automatic pilot
Hifi Radio Fusion 6 HP bluetooth (salon, flybridge and front cockpit)

Electrical, Power & Plumbing

Underwater lights
Freshwater purifying filter
Water-maker Aquabase Aruba Comfort - 240l/hr
House Batteries = 6 x 120 Victron gel.
Eng start batteries (2)
Generator start battery (1)
Generator = Onan w/ remote
Dual alternators (120amp) for each engine - total of 4 alternators for 500amps DC charging.
Inverter: Cerbo GX + Victron Multiplus 120v / P
Battery Charger: Victron Multiplus 12|2000|80
solar panels : 5 x 100W panels (500W)
Climate / Reverse Cycle AC: 6x Frigomar

Engine & Mechanical

57hp Yanmar engines 4JH P 861 S 913
Maze 11 KW Gen3250
SD 60 Sail Drives recent service and seals
Pair of 3 blades folding propellers

Sails & Rigging

Upwind sail area 1248 Sqft
Very easy to shorthand sail.
Lazy bag and UV protection for sail in taupe color
Reinforced Dacron full batten Mainsail & Solent with UV protection Lazy-Bag & Lazy-Jacks
1 Triradial Code 0 (80m²) with anti-rotation cable
Roller furling self-tacking jib
Furling code zero
Lewmar 55 Winches : 1 electric, 3 manual
Easy trim mainsheet system
Single line self-tacking headsail trim system
Easy reefing system

Additional Information

Gas BBQ grill and propane plancha
Includes life jackets.
Includes man overboard flotation device.

Includes flares and distress signaling devices.

Includes fenders.

Includes dock lines.

Includes one 50 amp shore cable.

Image Gallery









































































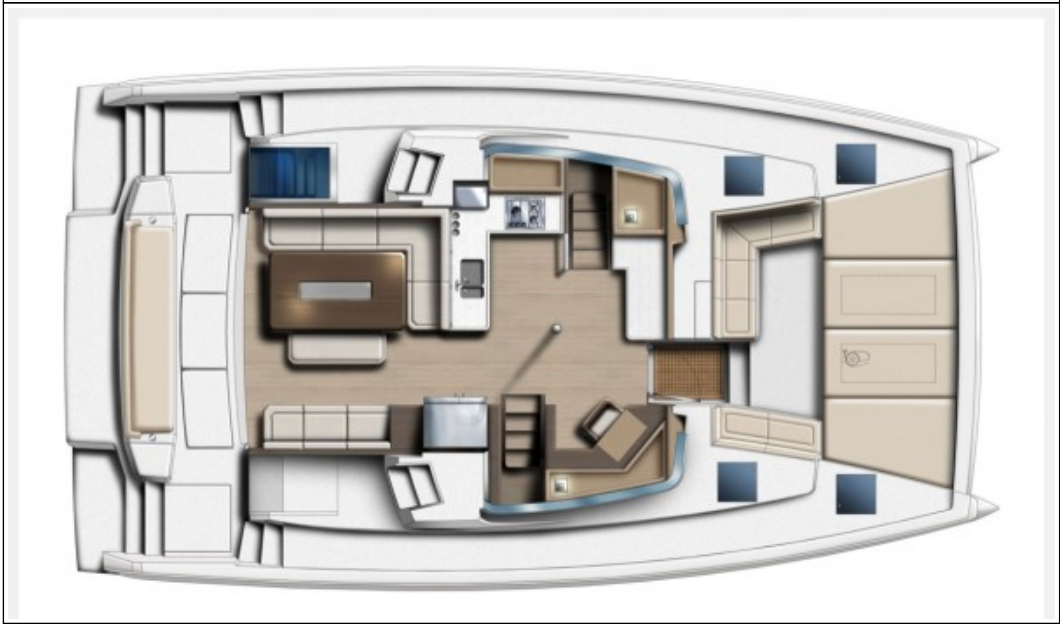
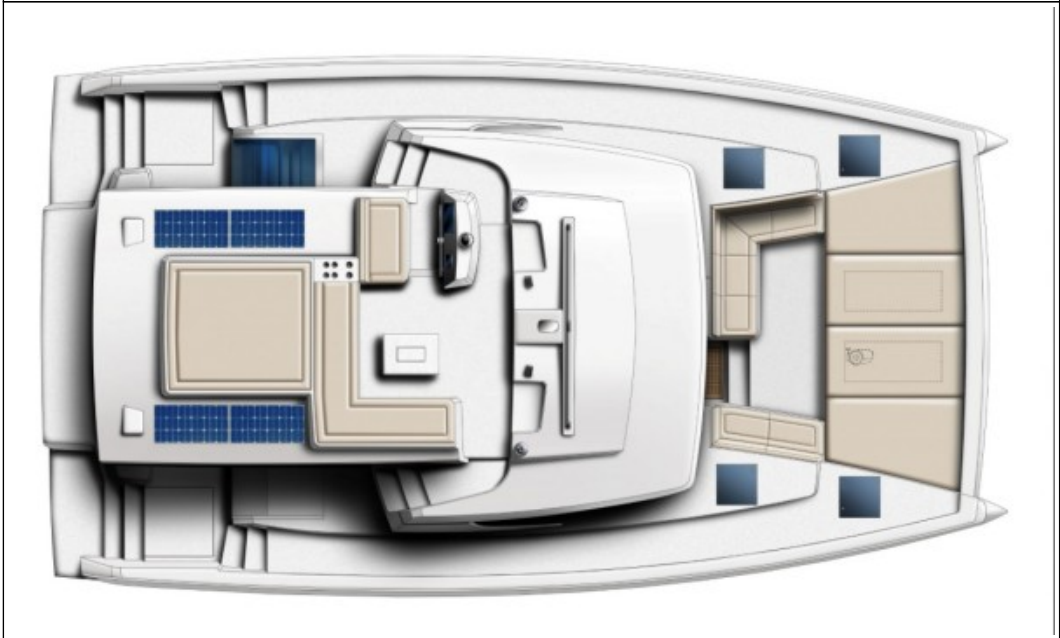












Disclaimer

The Company offers the details of this vessel in good faith but cannot guarantee or warrant the accuracy of this information nor warrant the condition of the vessel. A buyer should instruct his agents, or his surveyors to investigate such details as the buyer desired validated. This vessel is offered subject to prior sale, price change, or withdrawal without notice. Photos may not properly reflect the current condition of the actual vessel offered for sale. In some cases stock photographs may have been used.

Mechanical Disclaimer

Engine and generator hours are as of the date of the original listing and are a representation of what the listing broker is told by the owner and/or actual reading of the engine hour meters. The broker cannot guarantee the true hours. It is the responsibility of the purchaser and/or his agent to verify engine hours, warranties implied or otherwise and major overhauls as well as all other representations noted on the listing.

Dinghy Disclaimer

All dinghies are considered separate vessels and should have separate titles and documents. There is no guarantee as to the title of the dinghy on this vessel so Buyer accepts that while he may receive the dinghy included in the transaction, he may not receive the proper title to it.