

## 2023 Lagoon 46 TOMCAT



### Basic Vessel Summary

<b>Manufacturer:</b>	LAGOON
<b>Model:</b>	Lagoon 46
<b>Model Year:</b>	2023
<b>Year Built:</b>	2023
<b>Type of Yacht:</b>	Sail
<b>Price:</b>	\$1,280,000
<b>Condition:</b>	Used
<b>Status:</b>	Catamaran for Sale
<b>Location</b>	Edgewater Maryland (MD)
<b>Duties:</b>	NOT FOR SALE IN US WATER TO USA CITIZENS OR RESIDENTS
<b>Manuf. Length:</b>	45' 11" ( 14.00 m)
<b>Maximum Draft:</b>	4' 6" ( 1.37 m)
<b>Minimum Draft:</b>	4' 6" ( 1.37 m)
<b>Beam:</b>	26' 1" ( 7.95 m)

<b>LWL:</b>	45' 6" ( 13.87 m)
<b>Mast Height Clearance:</b>	76' 2" ( 23.22 m)
<b>No. of berths:</b>	3
<b>No. of Cabins:</b>	3
<b>No. of Heads:</b>	3
<b>Electric Circuit:</b>	220 volt
<b>Fuel Capacity:</b>	274 g
<b>Water Capacity:</b>	158 g
<b>Holding tank:</b>	63
<b>Cruise speed:</b>	6
<b>Max speed:</b>	8
<b>Weight - Displacement:</b>	31.063 ton (62,126 lb)
<b>Hull Material:</b>	Fiberglass Reinforced Plastic- FRP
<b>Hull Configuration:</b>	Catamaran
<b>Engine Manufacturer</b>	YANMAR
<b>Engine Model</b>	4JH57CR SD
<b>Engine Year</b>	2023
<b>Engine Horsepower</b>	57
<b>Engine Hours (Port)</b>	1325
<b>Engine Hours (Starboard)</b>	1326
<b>Engine Type</b>	Inboard
<b>Engine Configuration</b>	Twin
<b>Engine Fuel Type</b>	Diesel
<b>Engine Condition</b>	Used
<b>Does the boat have a generator?</b>	Yes
<b>Generator Model</b>	Panda 15000I
<b>Generator Operating Hours</b>	143
<b>Does a dinghy come with the boat?</b>	Yes
<b>Dinghy Model</b>	Highfield Classic 340
<b>Dinghy Length</b>	11'2
<b>Dinghy Model Year</b>	2023
<b>Dinghy Outboard Manufacturer</b>	Honda
<b>Dinghy Outboard Horsepower</b>	20
<b>Dinghy Outboard Year</b>	2023

### [Boat Description:](#)

TOMCAT is a beautifully equipped Lagoon 46 designed for effortless onboard living and exceptional sailing performance.

Perfectly set up for short-handed cruising, TOMCAT is easy to handle with just two crew members, thanks to premium features like a bow thruster, Dockmate wireless docking system, and a furling mainsail. This catamaran offers impressive energy independence, powered by an extensive solar panel array that supports a fully electric setup, no gas installation onboard. All appliances have been upgraded to run on electricity for greater

safety and convenience. Designed with comfort and entertainment in mind, the yacht includes a high-efficiency refrigerator and freezer system specifically chosen to eliminate condensation issues. TOMCAT is a standout Lagoon 46 for sale, ideal for liveaboard cruisers seeking a modern, eco-conscious, and easy-to-manage sailing catamaran.

## Full Specification

### Layout & Accommodations

A large (office) desk was installed in the owner's hull instead of the sofa. Additional bookshelves and a drawer unit, including a printer, were also added in the owner's hull.

A safe was installed, and the air conditioning controller was moved inside the salon bench, creating extra storage space.

Seven bathroom fixtures were mounted for towels and accessories.

### Galley

Induction stove

Samsung MC3GR8088CC/EG combination oven/microwave

Liebherr refrigerator (IRBb 4170) – 191L with climate zones

Liebherr freezer (IFNc 3553) – 65L

Dishwasher

Additional shelves installed in galley cabinets

Washer/dryer unit installed

### Deck & Equipment

Teak Deck

Gas system removed ,created additional cockpit locker

Additional handrails from cockpit to helm station

Extra cleats on the bow for mooring lines

Sun and privacy shades for salon windows

Direct access to anchor locker installed

Two fishing rod holder

### Electronics & Navigation

Raymarine Axiom Pro 16" display, QUANTUM 2 DOPPLER RADAR, Multifunction i70s display, P70s autopilot + ACU-400 actuator control unit + Gyro, Speed/Depth/Temp Transducer, Wind transducer, RAY90 VHF, AIS700 transceiver, AUTOPILOT REMOTE, REALVISION SOUNDER, rear CAMERAS, WIRELESS HANDSET FOR RAYMARINE VHF AT HELM STATION

NavLink NMEA 2000 to Wi-Fi gateway

NMEA alarm speaker

SEA.AI (Oscar) Offshore ONE collision camera on mast top

Dockmate Twist remote control

Yanmar engine control converted to digital

## Electrical, Power & Plumbing

6 x 375W solar panels on stern rack (each with individual MPPT controller)

2 x 375W + 2 x 150W on Bimini hardtop (each with MPPT controller)

6 x Victron SmartLithium 12V/330Ah = 23.76 kWh house battery

Victron Quattro 220V 5kW, Victron Multiplus 220V/1200W

Certified 220V breaker panel with surge protection

220V outlet in owner's bathroom

220V & 12V outlets in cockpit, 12V at helm

Up to 3 AC units can run on battery

110V shore power input with Victron Smart IP43 charger

Victron Smart IP43 charger for engine batteries

110V shore cable with adapters

Starlink High Performance antenna on Bimini

Peplink 5G antennas on mast

UniFi Switch "USW Lite 8 PoE", UniFi AP "AC HD", Mikrotik router

Remote control of boiler, spotlight, masthead light, and VHF via Shelly automation

## Engine & Mechanical

Bow thruster: Quick Double BTQ 250-140 (24V, 250mm)

Upgraded hydraulic pump for tender lift (double power) with remote control

Fischer Panda 15000i generator (220V)

## Sails & Rigging

Furling boom for mainsail

Electric furler for Code0 with helm control and remote control

Extra rope clutches for boom preventer and Parasailor

Sun cover for mainsail

## Additional Information

Safety Equipment (ARC Approved)  
Ocean Signal EPIRB1  
5 spotlights on Bimini hardtop  
Viking 8-person ocean liferaft with auto deployment  
Jon Buoy MOB device  
Large passive radar reflector  
Tricolor navigation light on mast top (backup)  
2 x throwable life rings  
Plastimo 20m rescue throw line with rail mount  
2 x SaveLines  
Emergency flares and rockets  
All required fire extinguishers installed + 2 spares  
2 x emergency flashlights mounted by extinguishers

Image Gallery











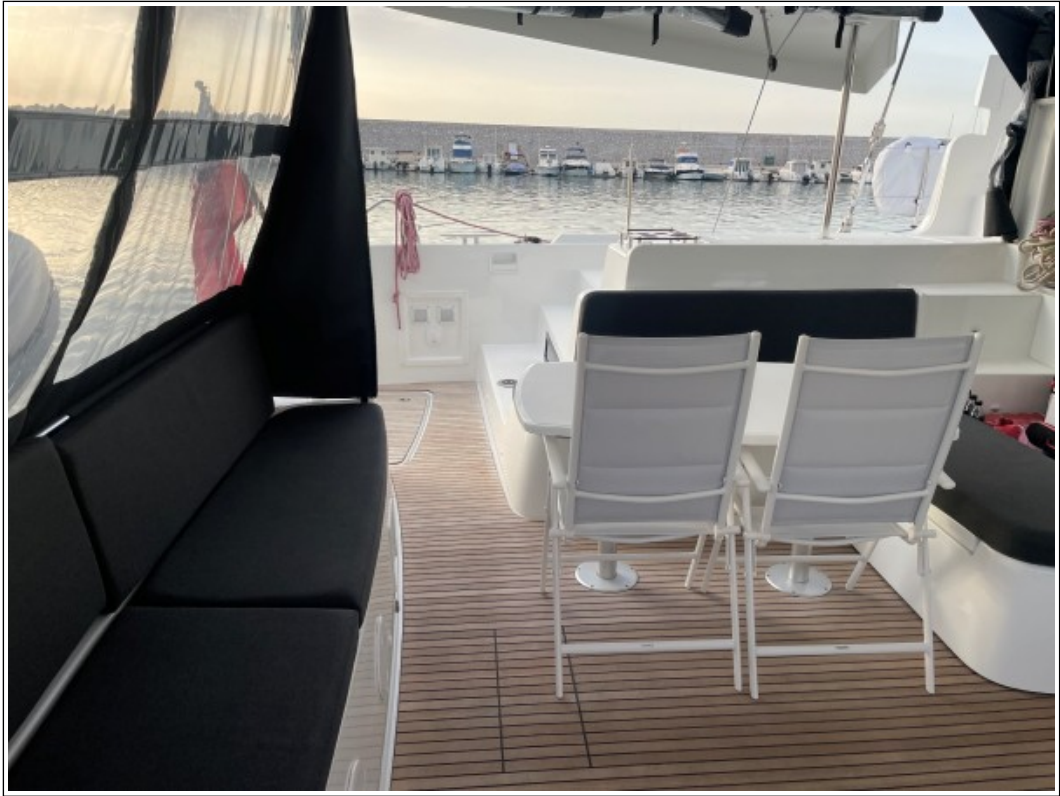
















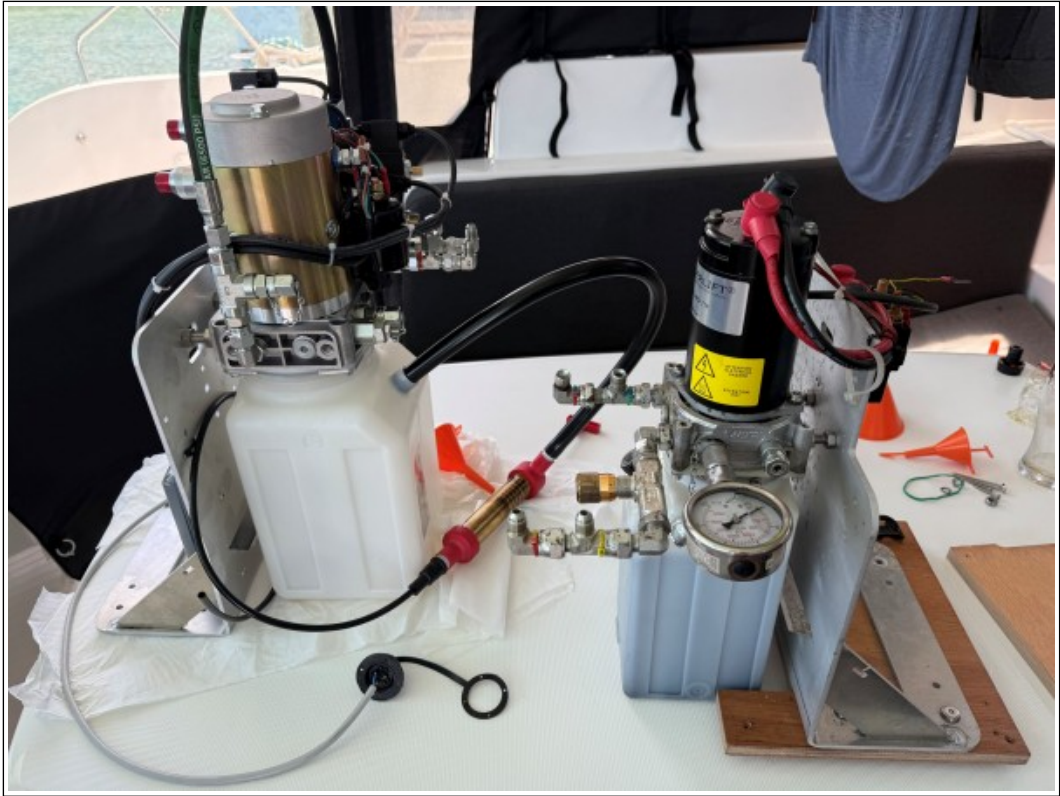


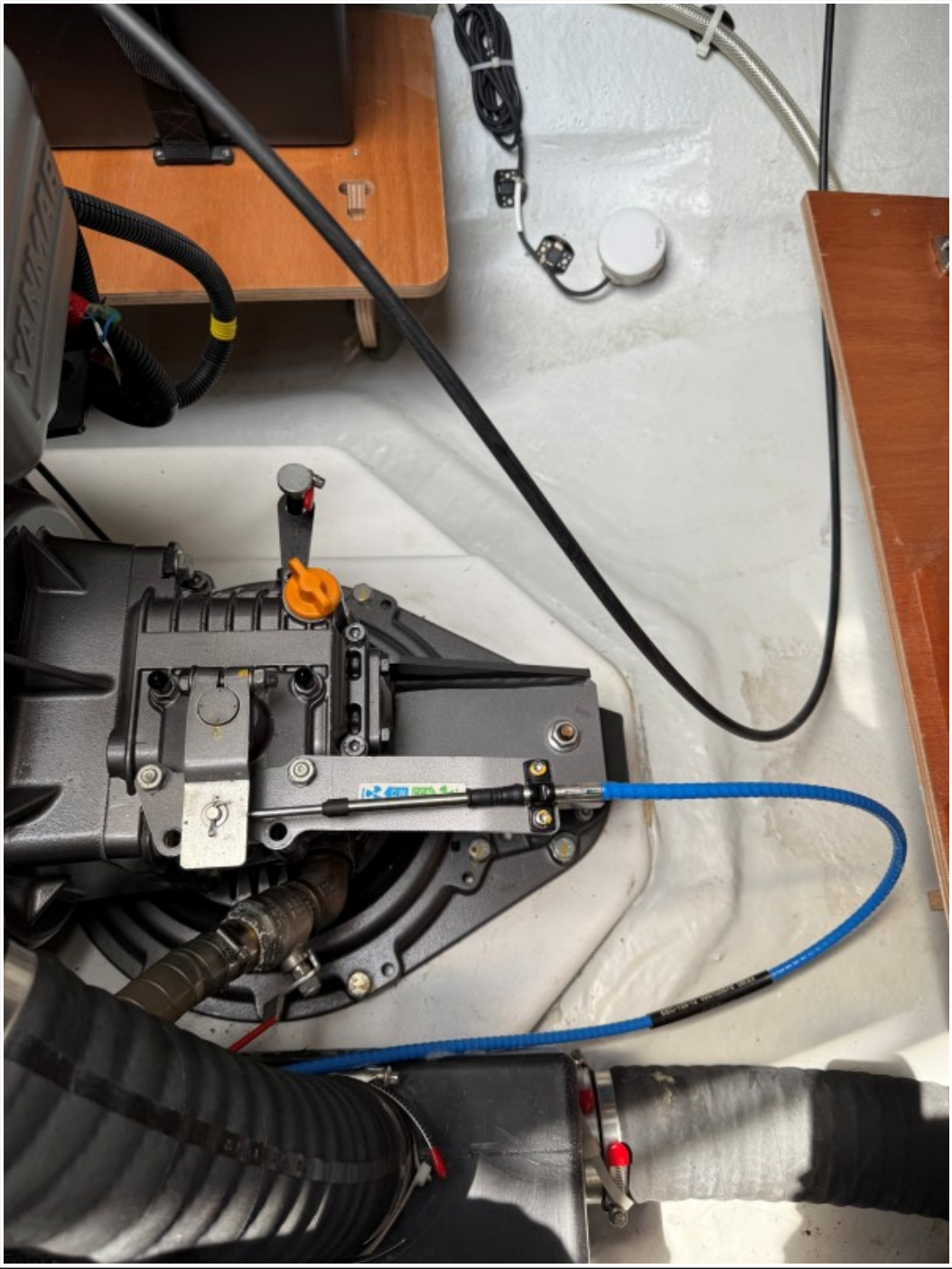






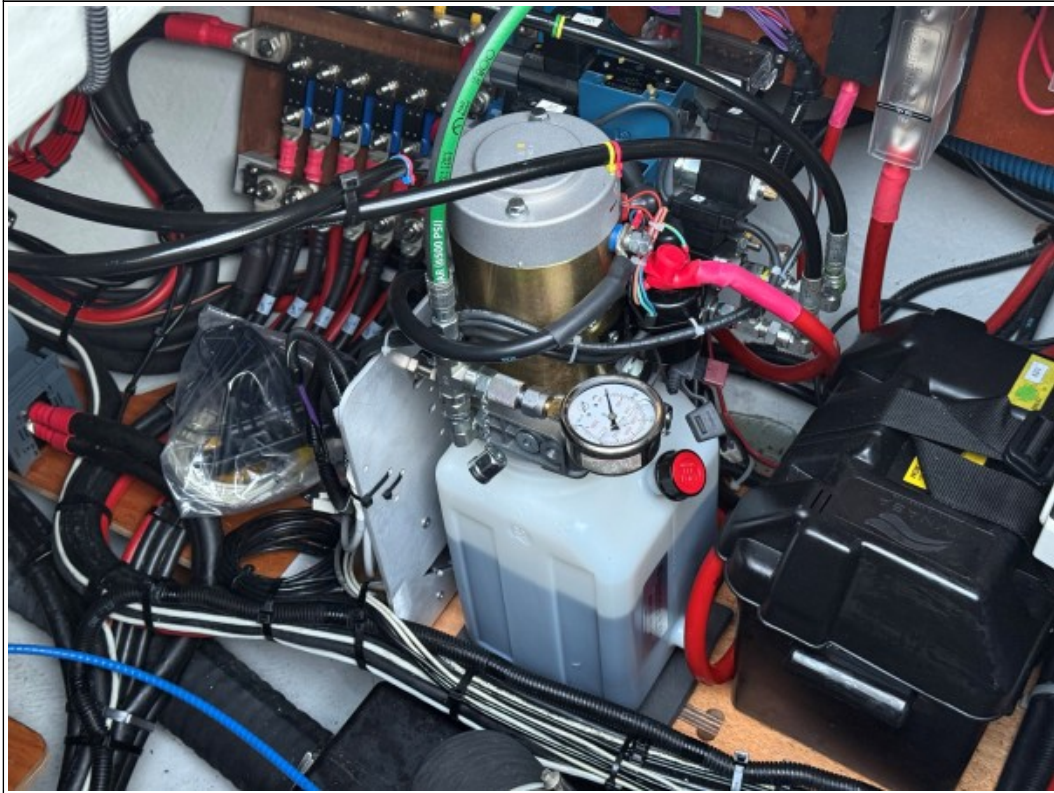
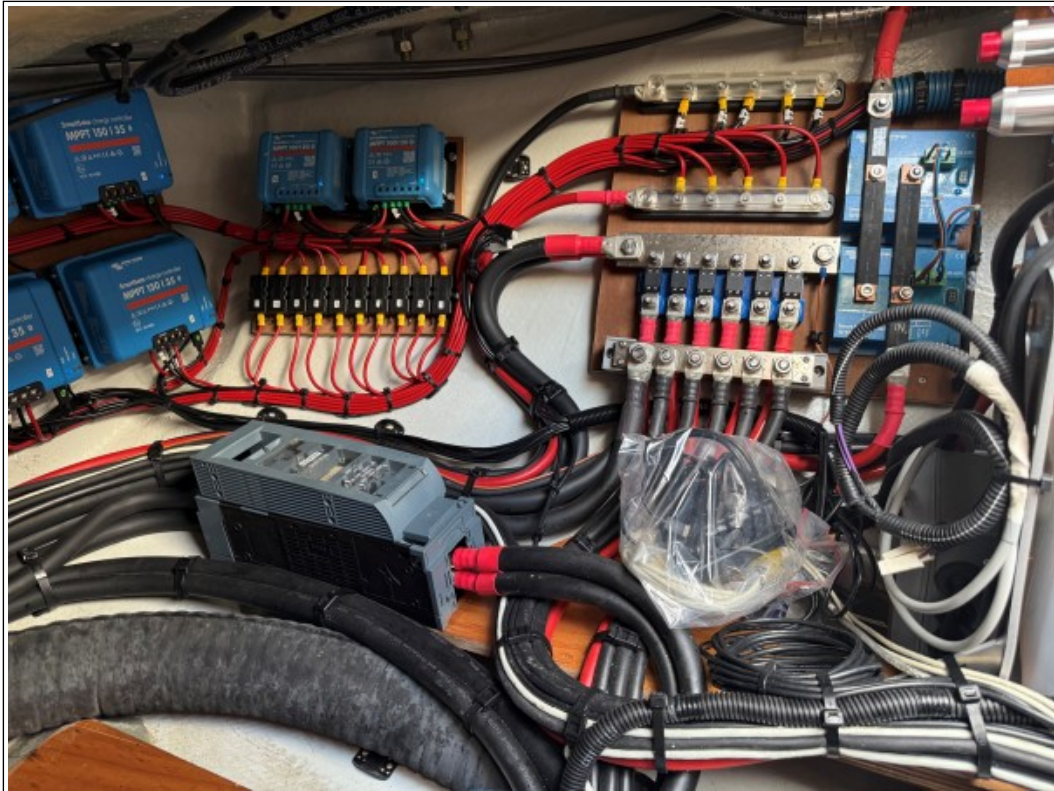












### **Disclaimer**

The Company offers the details of this vessel in good faith but cannot guarantee or warrant the accuracy of this information nor warrant the condition of the vessel. A buyer should instruct his agents, or his surveyors to investigate such details as the buyer desired validated. This vessel is offered subject to prior sale, price change, or withdrawal without notice. Photos may not properly reflect the current condition of the actual vessel offered for sale. In some cases stock photographs may have been used.

THIS VESSEL IS NOT FOR SALE IN US WATER TO USA CITIZENS OR RESIDENTS.

### **Mechanical Disclaimer**

Engine and generator hours are as of the date of the original listing and are a representation of what the listing broker is told by the owner and/or actual reading of the engine hour meters. The broker cannot guarantee the true hours. It is the responsibility of the purchaser and/or his agent to verify engine hours, warranties implied or otherwise and major overhauls as well as all other representations noted on the listing.

### **Dinghy Disclaimer**

All dinghies are considered separate vessels and should have separate titles and documents. There is no guarantee as to the title of the dinghy on this vessel so Buyer accepts that while he may receive the dinghy included in the transaction, he may not receive the proper title to it.