

2017 Nautitech 46 Fly NAUTI BY NATURE



Basic Vessel Summary

Manufacturer:	NAUTITECH
Model:	Nautitech 46 Fly
Model Year:	2017
Year Built:	2016
Type of Yacht:	Sail
Price:	\$514,000
Condition:	Used
Status:	Catamaran for Sale
Location	Edgewater Maryland (MD)
Manuf. Length:	45' 3" (13.79 m)
Maximum Draft:	4' 9" (1.45 m)
Beam:	24' 7" (7.49 m)
Mast Height Clearance:	75' (22.86 m)
No. of Cabins:	4
No. of Heads:	4

Electric Circuit:	110 volt
Fuel Capacity:	116 g
Water Capacity:	159 g
Weight - Displacement:	12.5685 ton (25,137 lb)
Hull Material:	Fiberglass
Hull Configuration:	Catamaran
Engine Manufacturer	VOLVO
Engine Model	D50
Engine Year	2022
Engine Horsepower	50
Engine Hours (Port)	1455
Engine Hours (Starboard)	1456
Engine Type	Inboard
Engine Configuration	Twin
Engine Fuel Type	Diesel
Engine Condition	Used
Does the boat have a generator?	Yes
Generator Model	9MDKDL
Generator Horsepower	9k
Does a dinghy come with the boat?	No

Boat Description:

US DUTY PAIDS/V Nauti By Nature is a beautifully maintained 2017 Nautitech 46 Fly catamaran—a highly sought-after flybridge model renowned for its spacious top deck and exceptional livability. The expansive flybridge offers seating for 10, a full dining table, a generous sun lounge, and a complete Bimini cover, making it the perfect space to entertain or relax in total comfort while enjoying panoramic views at sea.

This 46-foot sailing catamaran features a galley-up layout and four distinct lounging areas, creating an open and comfortable environment ideal for long-term cruising or liveaboard life. With four private cabins, each equipped with its own electric toilet, and two dedicated stand-up showers, this catamaran is designed for maximum convenience and comfort.

She is exceptionally easy and safe to sail, equipped with three electric winches, an in-mast furling mainsail, and all lines led back to the cockpit. A 5.5-foot bowsprit with a Code Zero on a continuous line furler, along with additional winches to port and starboard, adds performance and flexibility under sail.

Nauti By Nature is fully outfitted for extended or offshore cruising. It includes 950 watts of solar power, 1,200 amp hours of Relion lithium batteries, a 12-volt Spectra watermaker, a washing machine, and Starlink satellite internet. For ground tackle confidence, she features a Rocna anchor with new chain added in 2024.

The yacht is powered by a 9,000-watt Onan generator and upgraded with brand-new Volvo D50 engines, a new furling mainsail, and a new genoa—all replaced in 2023.

Whether you're planning to cruise globally or enjoy luxury coastal sailing, Nauti By Nature is a turn-key vessel ready for your next adventure. With comfort, performance, and full cruising capability, she stands as one of the best catamaran options in her class.

Full Specification

Layout & Accommodations

The 2017 Nautitech 46 Fly is a sailing catamaran featuring a spacious four-stateroom layout. Each stateroom is equipped with an electric flush toilet and sink, and the yacht includes two convenient walk-through showers (see layout).

True to its design, the living areas are generous and open.

The interior features a fully equipped galley connected to a navigation station and a large U-shaped settee surrounding a central dining table.

Air conditioning keeps the space comfortable, while large double sliding doors open seamlessly onto the covered salon.

Outside, there's a starboard-side dining area and additional bench seating to port.

From the port side, stairs lead up to the open-air flybridge. Here, the helm and sail controls are positioned forward, with seating on both sides for guests to relax and enjoy the view. A Bimini top with clear panels allows visibility of the mainsail from the helm.

This catamaran offers impressive sailing performance, thanks to a well-balanced sail plan! When not under sail, twin Volvo diesel engines provide reliable and efficient propulsion. For off-grid capability, a generator and multiple solar panels charge the onboard electrical system, managed through a Victron Quattro system.

Three electric winches and cockpit-led lines make single-handed sailing a breeze!

Key Features

Four Stateroom, four head layout

Available additional room in bows for storage

Power available from solar panels and/or generator via Victron Quattro

Watermaker Spectra Newport 400c DC powered 17gpd

Flybridge allows more living space and unobstructed view for captain

Elvstrom main and jib and furling gennaker

Staterooms:

The staterooms each provide room for two and have air conditioning and fresh air availability through deck hatches.

The aft two staterooms are a bit larger.

All staterooms have private access to heads with sinks.

A shower is between each head and accessible from either.

Roomy double bunk in each stateroom

Reading lights

Air conditioner control in each room

Overhead lights

Hanging locker

Storage cabinets

En suite heads

Two shared showers

Galley

Air conditioning with zone control

Opening ports in the windshield

Opening overhead hatches

Double sliding doors a

Full galley

Navigation station

U-shaped settee with table that can be lowered

Custom cabinet with beverage refrigerator/freezer and washer

Oven

Microwave oven

Refrigerator: 2-drawer refrigerator 104L, 27gl fridge - 12V

Deck & Equipment

Cockpit shower

Davit(s)

Cockpit cushions

Cockpit table

Swimming ladder

Electronics & Navigation

Depth sounder: Garmin - GMI 20 multifunction display on flybridge and chart table
Radar: Garmin: GMR 18XD radar scanner
Log-Speedometer: Garmin - GMI 20 multifunction display on flybridge and chart table
Wind Speed and Direc on: Garmin - GMI 20 mul func on display on flybridge and chart table
Computer: 1 Victron GX Touch, 2 x wake speed external
Regulators to work with the batteries
Radio: Fusion MS-RA205
GPS: Garmin - GPS map 7412
Cockpit speakers
VHF: Garmin - GHS Ili - AIS

Electrical, Power & Plumbing

Shore power inlet
Generator: Cummins Onan 9KW, 110V / 60hz
Inverter: Victron Quatro 12/5000/200-100/100 120 V inverter/charger combo
4 x Relion RB300 12V 300AH lithium house batteries
2 x Victron Orion-TR Smart 12/12V chargers
1 x Victron Gerbo GX (system monitoring device)
1 x Victron GX Touch (display for previous)
Solar Panel: 4 x solar panels (2 x 370W Mono 6BB 34mp 1776 x 1052 x 35, 2 x 105W Mono 18Vmp 1195 x 541 x 35)

Engine & Mechanical

Twin Volvo Penta D2-50 diesel, sail drive, 50hp engines
Electric bilge pump
Manual bilge pump
Air Conditioning: 48000BTU
4 Electric heads
Heating
Hot water
Fresh water maker: Spectra Newport 400c, 12v DC 24A / 24v DC 12A, 17 g (64 l) every hour

Sea water pump
New Saildrive seals December 2024

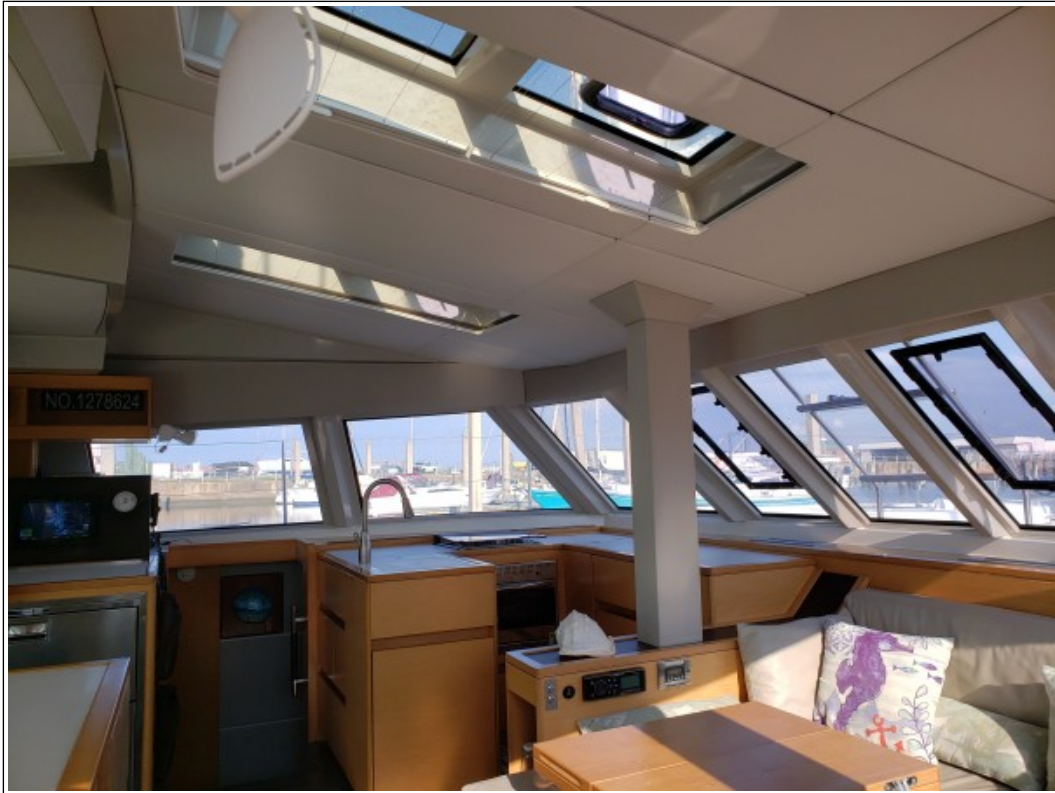
Sails & Rigging

Furling mainsail: new 2023 Elvstrom 65 m² / 699 sq. Gennaker/cruising Spinnaker: 100m² / 1076 sq. Furler
Self-tacking Furling Genoa: new 2023 Elvstrom 38 m² / 409 sq.

Image Gallery





















































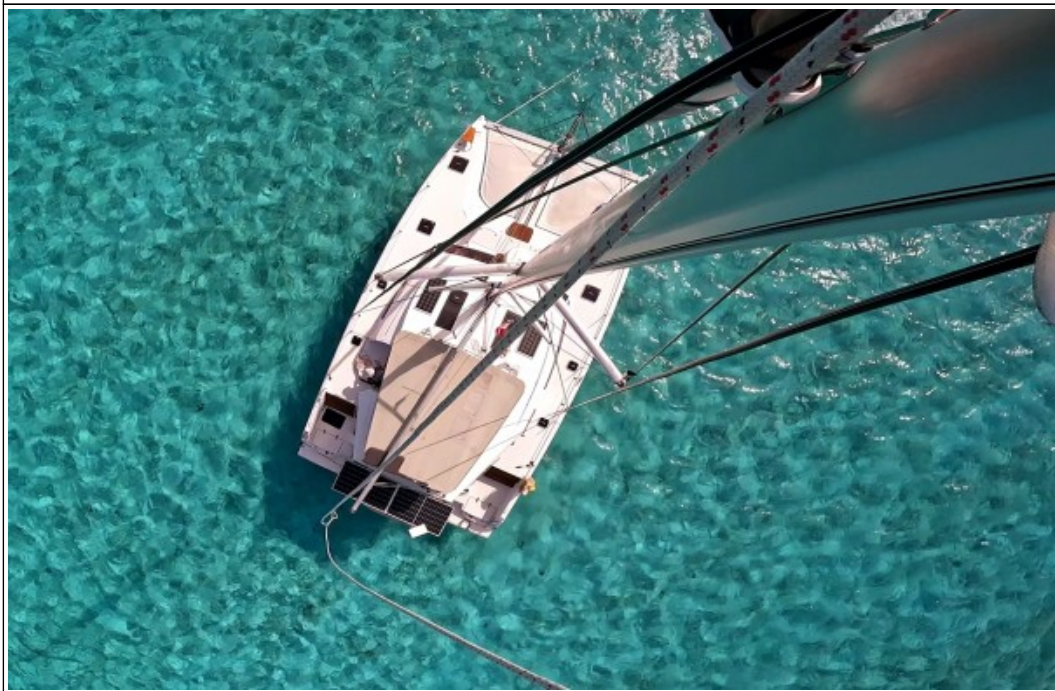
















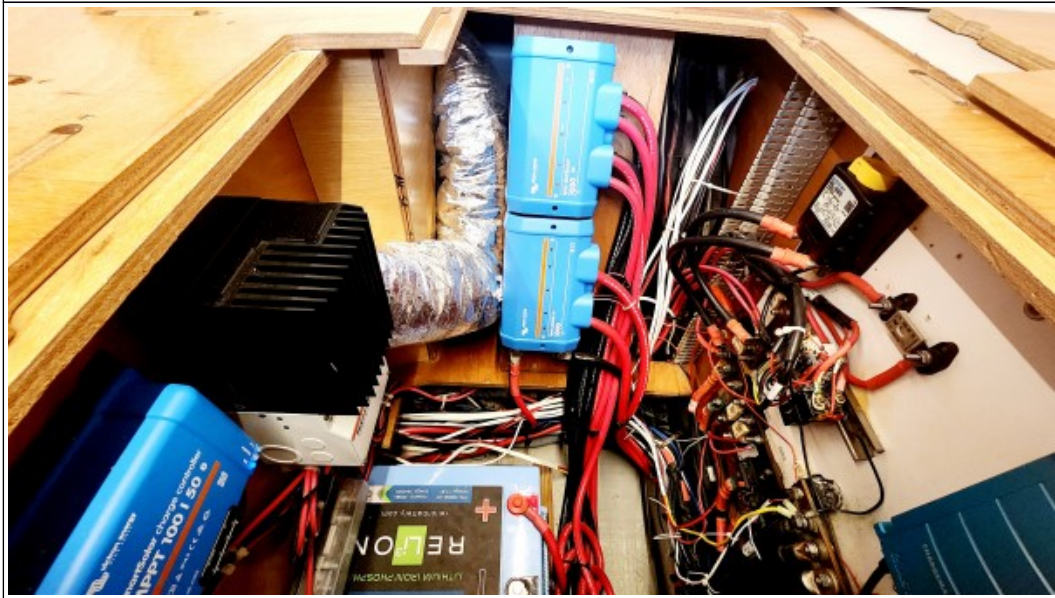


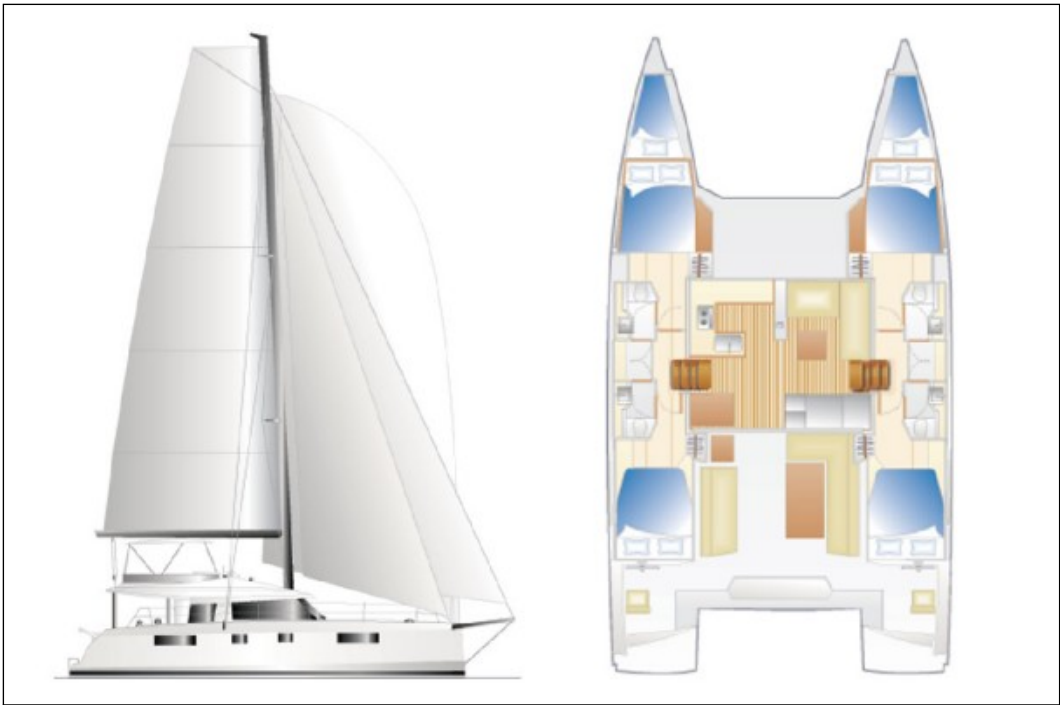













NAUTITECH
46 fly



Disclaimer

The Company offers the details of this vessel in good faith but cannot guarantee or warrant the accuracy of this information nor warrant the condition of the vessel. A buyer should instruct his agents, or his surveyors to investigate such details as the buyer desired validated. This vessel is offered subject to prior sale, price change, or withdrawal without notice. Photos may not properly reflect the current condition of the actual vessel offered for sale. In some cases stock photographs may have been used.

Mechanical Disclaimer

Engine and generator hours are as of the date of the original listing and are a representation of what the listing broker is told by the owner and/or actual reading of the engine hour meters. The broker cannot guarantee the true hours. It is the responsibility of the purchaser and/or his agent to verify engine hours, warranties implied or otherwise and major overhauls as well as all other representations noted on the listing.

Dinghy Disclaimer

All dinghies are considered separate vessels and should have separate titles and documents. There is no guarantee as to the title of the dinghy on this vessel so Buyer accepts that while he may receive the dinghy included in the transaction, he may not receive the proper title to it.