

2016 Nautitech Open 40 SEA HUGGER



Basic Vessel Summary

Manufacturer:	NAUTITECH
Model:	Nautitech Open 40
Model Year:	2016
Year Built:	2015
Type of Yacht:	Sail
Price:	\$325,000
Condition:	Used
Status:	Catamaran for Sale
Location	Marco Island Florida (FL)
Manuf. Length:	39' 4" (11.99 m)
Maximum Draft:	4' 5" (1.35 m)
Beam:	22' 8" (6.91 m)
LWL:	39' 4" (11.99 m)
Mast Height Clearance:	67' 8" (20.62 m)
No. of berths:	8

No. of Cabins:	4
No. of Heads:	2
Electric Circuit:	110 volt
Fuel Capacity:	114 g
Water Capacity:	112 g
Cruise speed:	7
Max speed:	8
Weight - Displacement:	9.35 ton (18700 lb)
Hull Material:	Fiberglass
Hull Configuration:	Catamaran
Engine Manufacturer	VOLVO
Engine Model	D240
Engine Year	2015
Engine Horsepower	40
Engine Hours (Port)	2000
Engine Hours (Starboard)	2000
Engine Type	Inboard
Engine Configuration	Twin
Engine Fuel Type	Diesel
Engine Condition	Used
Does the boat have a generator?	No
Does a dinghy come with the boat?	Yes
Dinghy Model	HIGHFIELD
Dinghy Length	10'2"
Dinghy Model Year	2023
Dinghy Outboard Manufacturer	YAMAHA
Dinghy Outboard Horsepower	9.9
Dinghy Outboard Year	2023

Boat Description:

SEA HUGGER is a 2016 Nautitech Open 40, a high-performance cruising catamaran that perfectly blends comfort, speed, and ease of handling. Featuring a versatile four-cabin layout, she is ideal for family cruising, private ownership, or charter operations.

Renowned for her open living spaces and exceptional sailing performance, the Nautitech Open 40 offers effortless handling while delivering exhilarating performance on the water. SEA HUGGER has been meticulously maintained and is fully equipped for bluewater passages, long-distance cruising, or relaxed island-hopping adventures.

This is an outstanding opportunity to own a well-appointed, ready-to-sail catamaran that combines style, reliability, and true offshore capability.

Full Specification

Layout & Accommodations

The 4-cabin version offers four symmetrical double cabins — two in each hull. Each cabin provides a generous double berth, adequate storage, and natural light. Two heads (one per hull) feature integrated showers and toilets. Standard sleeping capacity for eight. Lighting, built-in fans, hanging lockers, and under-bed storage. Washer/dryer located in the port hull.

Galley

Open-concept connection between saloon and cockpit. Three-burner propane stove with oven. Double sink with pressurized hot and cold water. 12V refrigerator. Deep drawers for pots, pans, and utensils. Under-counter cabinets. Seamless indoor/outdoor feel.

Deck & Equipment

The deck is designed with an “Open” concept, creating a seamless flow between the cockpit, saloon, and helm—perfect for social cruising and warm-weather sailing. Expansive cockpit and comfortable trampoline area. Twin steering stations, one on each hull, offering exceptional visibility. Electric windlass. Self-tacking jib sheet. Full cockpit enclosure for weather shelter. New bottom paint in 2024.

Electronics & Navigation

Garmin 943xsv on each helm. Radar. AIS. Marine audio (AM/FM, Bluetooth, Aux, with 2 speakers in the saloon and 2 speakers in the cockpit). New transducer. VHF.

Electrical, Power & Plumbing

2000 watts of solar.

Inverter.

New batteries.

Washing machine.

Electric winch for mainsail at STB.

Updated electrical system 110V 60Hz.

Engine & Mechanical

Volvo D240 in each hull, approximately 2,000 hours.

50 Amp shore power.

Sails & Rigging

Mainsail with three reefing lines.

New lazy bag.

Self-tacking jib.

Gennaker.

Image Gallery











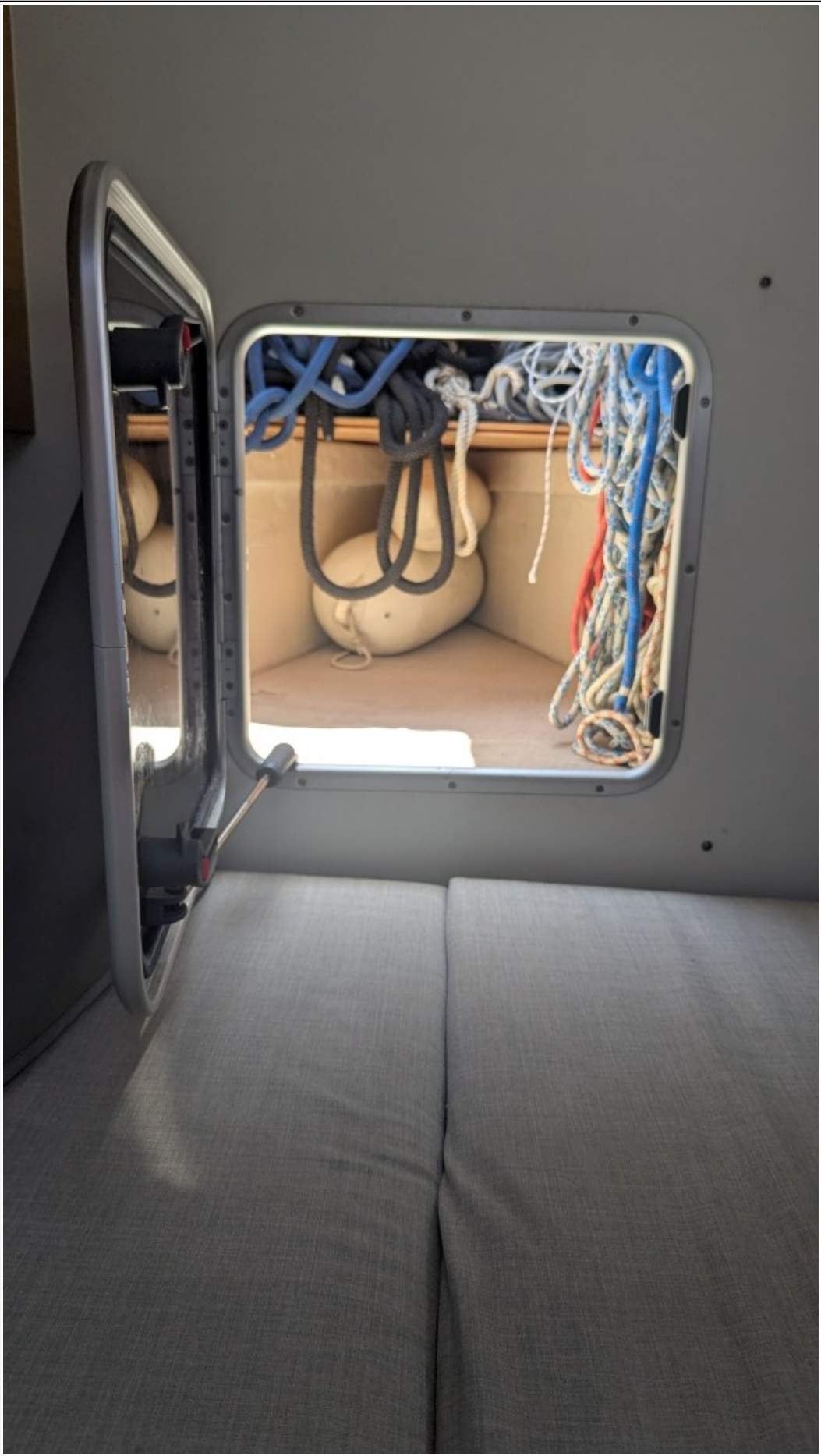


















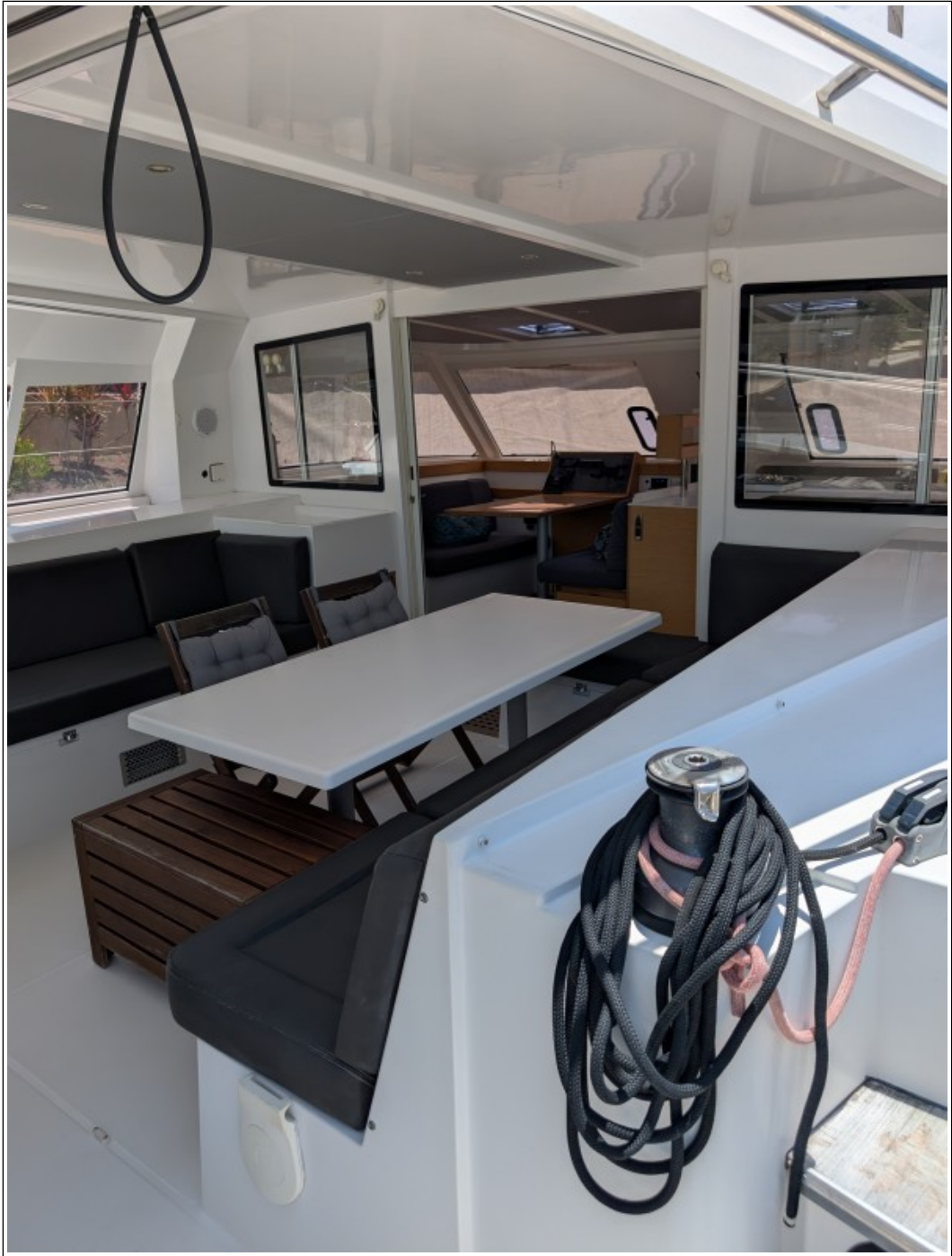




















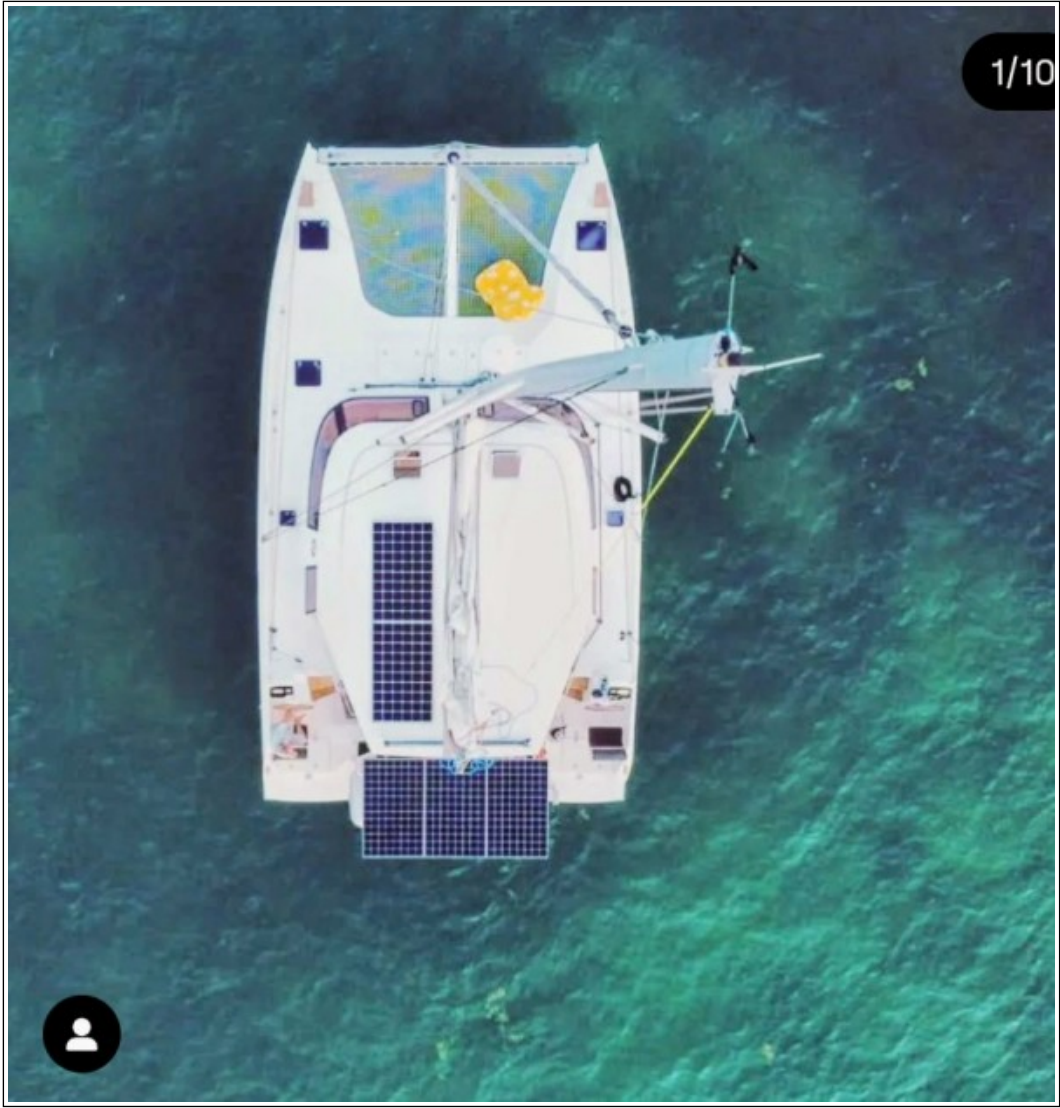


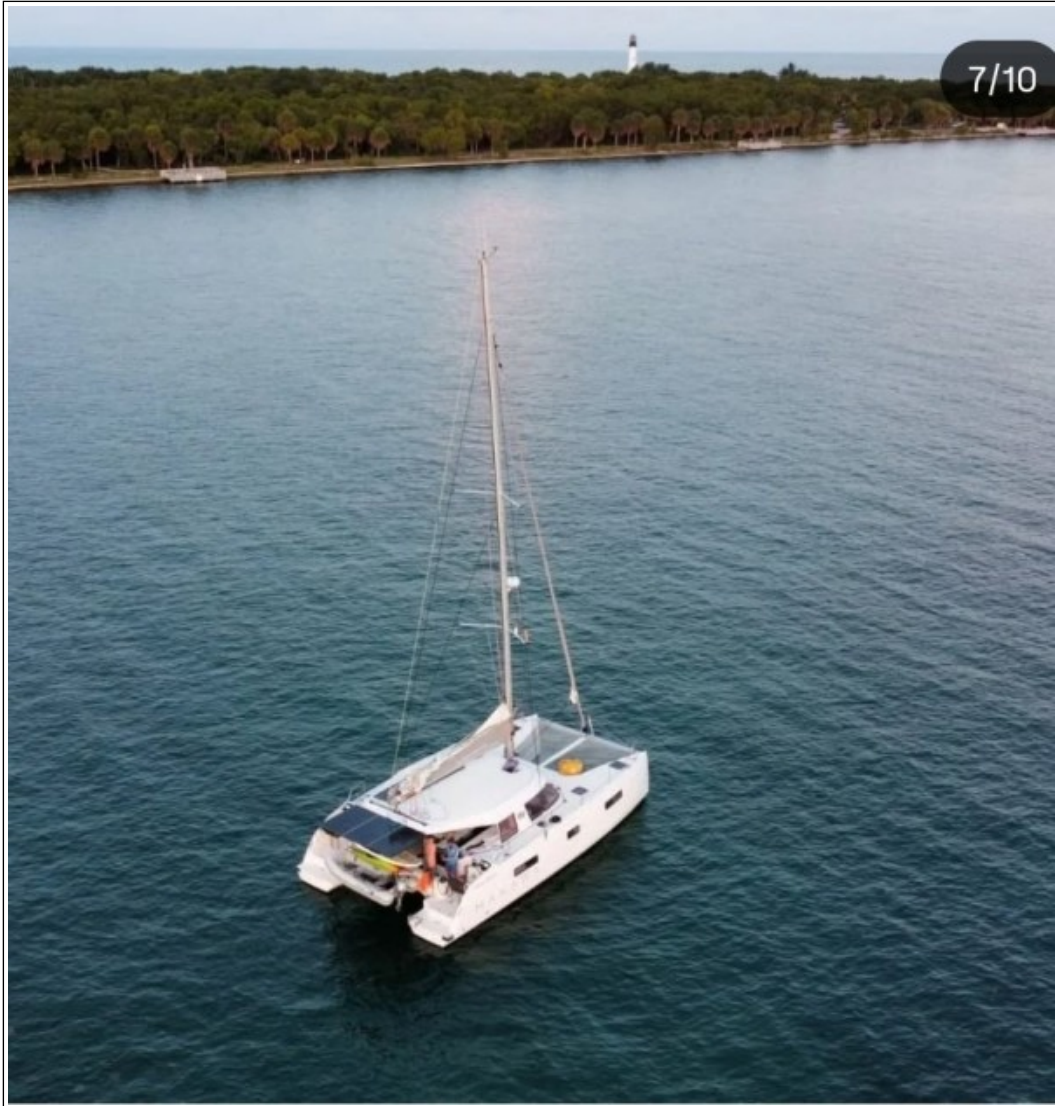
















2X56 GAL
EAU 2X215L.

2X56 GAL
GO 2X215L.

The control panel features three main gauges at the top: a water level gauge on the left, a fuel gauge in the center, and a Victron Energy battery monitor on the right. Below the gauges are three sets of switches: two for side lighting (Babord/Port and Tribord/Starboard) and one for navigation lights (Blanc/White and Rouge/Red). The central section contains a grid of 24 switches, each with a corresponding label in French. The right side of the panel has a vertical column of 10 switches, also with labels. At the bottom, the Nautitech Catamarans logo and '12V' warning symbols are visible.

GAUGES:
EAU (Water)
FUEL
victtron energy BATTERY MONITOR

SWITCHES (Left Column):
BABORD PORT / TRIBORD STARBOARD
BLANC WHITE / ROUGE RED / OFF

SWITCHES (Middle Column):
FEUX DE NAVIGATION (NAVIGATION LIGHTS)
FEUX DE MUNE (STEAMING LIGHT)
FEUX DE MOUILLAGE (ANCHOR LIGHT)
PROJECTEUR DE PORT (PORT FLOODLIGHT)
ECLAIRAGE CABINE (CABIN LIGHTING)
ECLAIRAGE TRIBORD (TRIBORD SIDE LIGHTING)
ECLAIRAGE BABORD (BABORD PORT SIDE LIGHTING)
ECL. EXTERIEUR (OUTDOOR LIGHTING)
CHAUFFAGE (HEATER)

SWITCHES (Right Column):
GROUPE D'EAU (FRESH WATER)
PNE D'EAU DE MER (GALLEY SEA WATER PUMP)
PNE DE DOUCHE TRIBORD (TRIBORD SHOWER PP)
PNE DE DOUCHE BABORD (BABORD PORT SHOWER PP)
PNE DE CÂBLE TRIBORD (TRIBORD BELGE PP)
PNE DE CÂBLE BABORD (BABORD PORT BELGE PP)
REFRIGERATEUR (FRIDGE)
CONSERVATEUR (FREEZER)
REFRIG. COCHON (COCHON FRIDGE)

SWITCHES (Far Right Column):
JAUGES (GAUGES)
PRISES 12V (12V OUTLETS)
NFI
PILOTE AUTOMATIQUE (AUTOPILOT)
ELECTRONIQUE (ELECTRONIC)
VHF
RADAR
WATER MAKER
AIS off

NAUTITECH CATAMARANS
12V

2X56 GAL
EAU 2X215L.

2X56 GAL
GO 2X215L.



BABORD PORT

BABORD PORT

BLANC WHITE

- FEUX DE NAVIGATION NAVIGATION LIGHTS
- FEUX DE HEUNE STEERING LIGHT
- FEUX DE MOULAGE ANCHOR LIGHT
- PROJECTEUR DE PONT DECK FLOODLIGHT
- ECLAIRAGE CABINE MESS LIGHTING
- ECLAIRAGE TRIBORD STBD SIDE LIGHTING
- ECLAIRAGE BABORD PORT SIDE LIGHTING
- ECL EXTERIEUR OUTDOOR LIGHTING
- CHAUFFAGE HEATER

- GRUPE D'EAU FRESH WATER
- PELAI DE MER CUISINE GALLEY SEA WATER PUMP
- PELAI DOUCHE TRIBORD STBD SHOWER PP
- PELAI DOUCHE BABORD PORT SHOWER PP
- PELAI DE CALE TRIBORD STBD BILGE PP
- PELAI DE CALE BABORD PORT BILGE PP
- REFRIGERATEUR FROGE
- CONSERVATEUR FREEZER
- REPERO COCKPIT COCKPIT FROGE

- JAUGES GAUGES
- PRISES 12V 12V OUTLETS
- HIFI
- PILOTE AUTOMATIQUE AUTOPILOT
- ELECTRONIQUE ELECTRONIC
- VHF
- RADAR
- WATER MARK
- AIS OFF

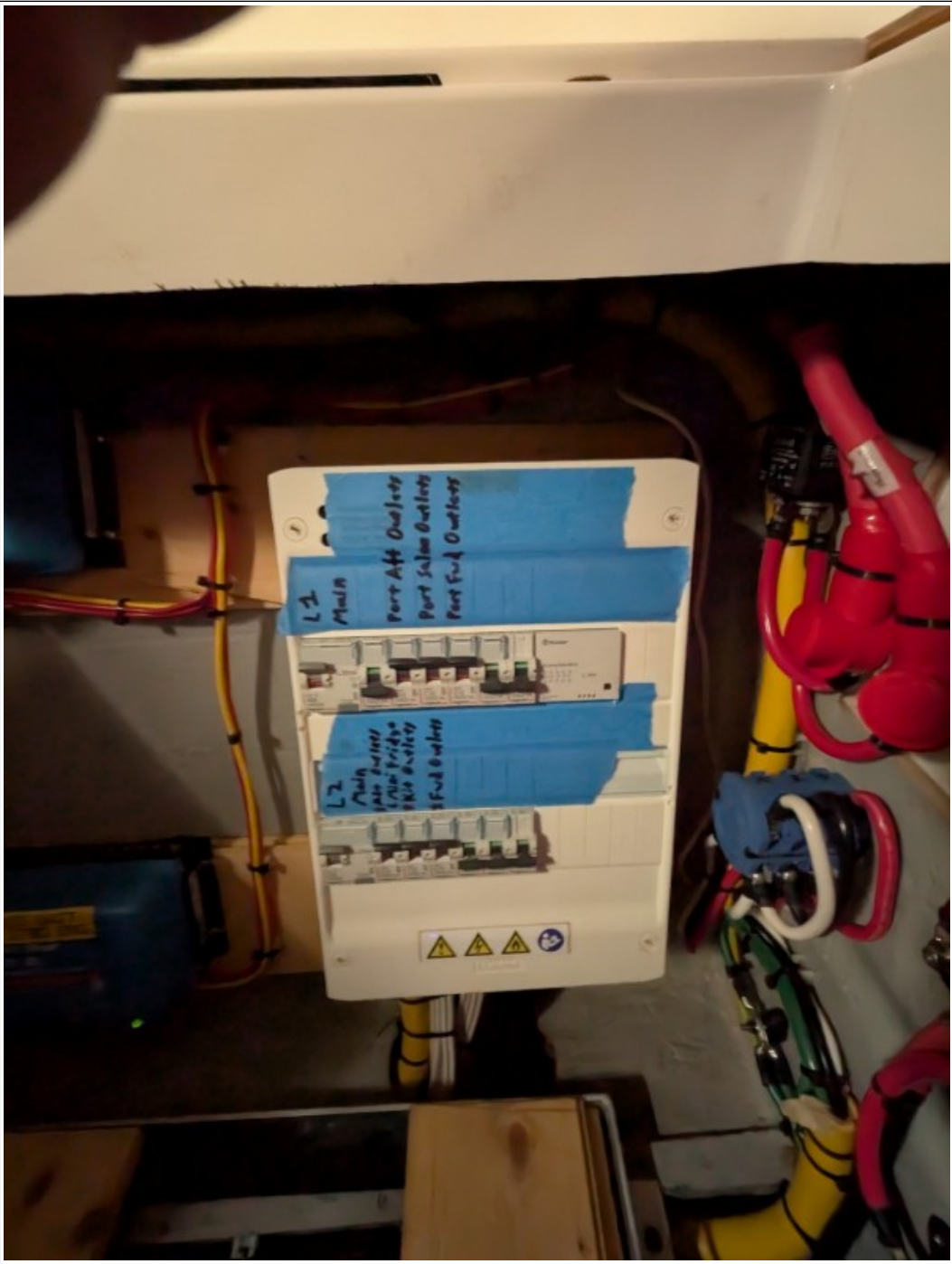
 **NAUTITECH**
CATAMARANS

12V 



















Disclaimer

The Company offers the details of this vessel in good faith but cannot guarantee or warrant the accuracy of this information nor warrant the condition of the vessel. A buyer should instruct his agents, or his surveyors to investigate such details as the buyer desired validated. This vessel is offered subject to prior sale, price change, or withdrawal without notice. Photos may not properly reflect the current condition of the actual vessel offered for sale. In some cases stock photographs may have been used.

Mechanical Disclaimer

Engine and generator hours are as of the date of the original listing and are a representation of what the listing broker is told by the owner and/or actual reading of the engine hour meters. The broker cannot guarantee the true hours. It is the responsibility of the purchaser and/or his agent to verify engine hours, warranties implied or otherwise and major overhauls as well as all other representations noted on the listing.

Dinghy Disclaimer

All dinghies are considered separate vessels and should have separate titles and documents. There is no guarantee as to the title of the dinghy on this vessel so Buyer accepts that while he may receive the dinghy included in the transaction, he may not receive the proper title to it.