

2011 Gemini 105Mc WANDERER



Basic Vessel Summary

Manufacturer:	PERFORMANCE CRUISING
Model:	Gemini 105Mc
Model Year:	2011
Year Built:	2011
Type of Yacht:	Sail
Price:	\$164,900
Condition:	Used
Status:	Sold
Location	Edgewater Maryland (MD)
Manuf. Length:	34' 6" (10.52 m)
Maximum Draft:	5' 6" (1.68 m)
Minimum Draft:	1' 6" (.46 m)
Beam:	14' (4.27 m)
LWL:	31' 9" (9.68 m)
Mast Height Clearance:	46' (14.02 m)
No. of Cabins:	3
No. of Heads:	1
Fuel Capacity:	36 g
Water Capacity:	60 g
Holding tank:	1
Weight - Displacement:	4.75 ton (9500 lb)
Hull Material:	Fiberglass Reinforced Plastic- FRP
Hull Configuration:	Catamaran
Engine Manufacturer	Westerbeke
Engine Model	30C

Engine Year	2011
Engine Horsepower	27
Engine Hours (Starboard)	140
Engine Type	Inboard
Engine Configuration	Single
Engine Fuel Type	Diesel
Does the boat have a generator?	No
Does a dinghy come with the boat?	No

Full Specification

Layout & Accommodations

3 cabin, 1 head owners layout, forward owners cabin is spacious with queen berth
Leatherette upholstery
Reading lights in every cabin
Convertible berth in salon
12 Volt adapters in each cabin
Two marine air conditioners (10k BTU each)
Blinds on all ports, hatches and windows
Two salon tables included, original cherry table and custom Corian table

Galley

Propane stove with two burners, oven and broiler.
Refrigerator – 6 cu ft. 12V
Pressure water system with manual foot pump
Sink- Stainless Steel Twin Sinks with adjustable faucet
Microwave oven

Deck & Equipment

Bow seats
Transom shower
Rear hammock
Kato Dinghy davits (Dinghy not included)
Electric windlass
Canvas on main windows
Blinds on all ports, hatches and windows
Lifeline gates (4)
4 x Bomar hatches with screens, 1 in head, 1 in master and 2 in dinette

Fiberglass canopy – overhead opening ports, stainless rail support
Fiberglass molded transom steps with swim ladder
Self-draining anchor locker and sail locker on foredeck
2 x cockpit lockers, 2 x aft storage lockers
5 mooring cleats, thru-bow-sprit anchor roller
35lb Delta anchor with rope/chain rode
Hull – deck joint chemically bonded and bolted. PVC gunwale guard

Electronics & Navigation

Raymarine ST60 Tridata
ICOM VHF radio
Raymarine ST60 wind
Raymarine wheel autopilot
Garmin chart plotter GPSMap 4008 with g2 vision chip of Chesapeake Bay
LED TV with HD antenna/amplifier and dockside connection.

Electrical, Power & Plumbing

4D deep cycle gel marine battery with Promariner battery charger with separate gel start battery
Shore power 30 amp X 2
Hot Water Heater - 6 gal Electric with Engine Heat option
20 lb propane tanks in cockpit locker with regulator
Port/starboard, stern, steaming, tricolor, anchor and deck lights
18 interior lights, cockpit light
Transom shower
CO detectors
Main bilge pumps (2)
Fire system
Upgraded battery charger
12 Volt adapters in each cabin
Two marine air conditioners (10k BTU each)
Head:
Molded head compartment
Manual flush head
Deck pump out and gravity tank flush with Y valve
Shower with sump pump 4D deep cycle gel marine battery with Promariner battery charger with separate gel start battery
Shore power 30 amp X 2
Hot Water Heater - 6 gal Electric with Engine Heat option
20 lb propane tanks in cockpit locker with regulator

Port/starboard, stern, steaming, tricolor, anchor and deck lights

18 interior lights, cockpit light

Transom shower

CO detectors

Main bilge pumps (2)

Fire system

Upgraded battery charger

12 Volt adapters in each cabin

Two marine air conditioners (10k BTU each)

Head:

Molded head compartment

Manual flush head

Deck pump out and gravity tank flush with Y valve

Shower with sump pump

Engine & Mechanical

Westerbeke 30C 27hp main engine with Sillette drive, 140 hours

Main bilge pumps (2)

Fire system

Sails & Rigging

Fully battened large roach mainsail with 2 slab reef points 340 sq ft

Rear cockpit mounted traveler

Adjustable back stay

150% Genoa on roller furler 350 sq ft

2 - self-tailing Lewmar #40 chrome winches

Sail cover, lazy jacks and stack pack

Image Gallery

























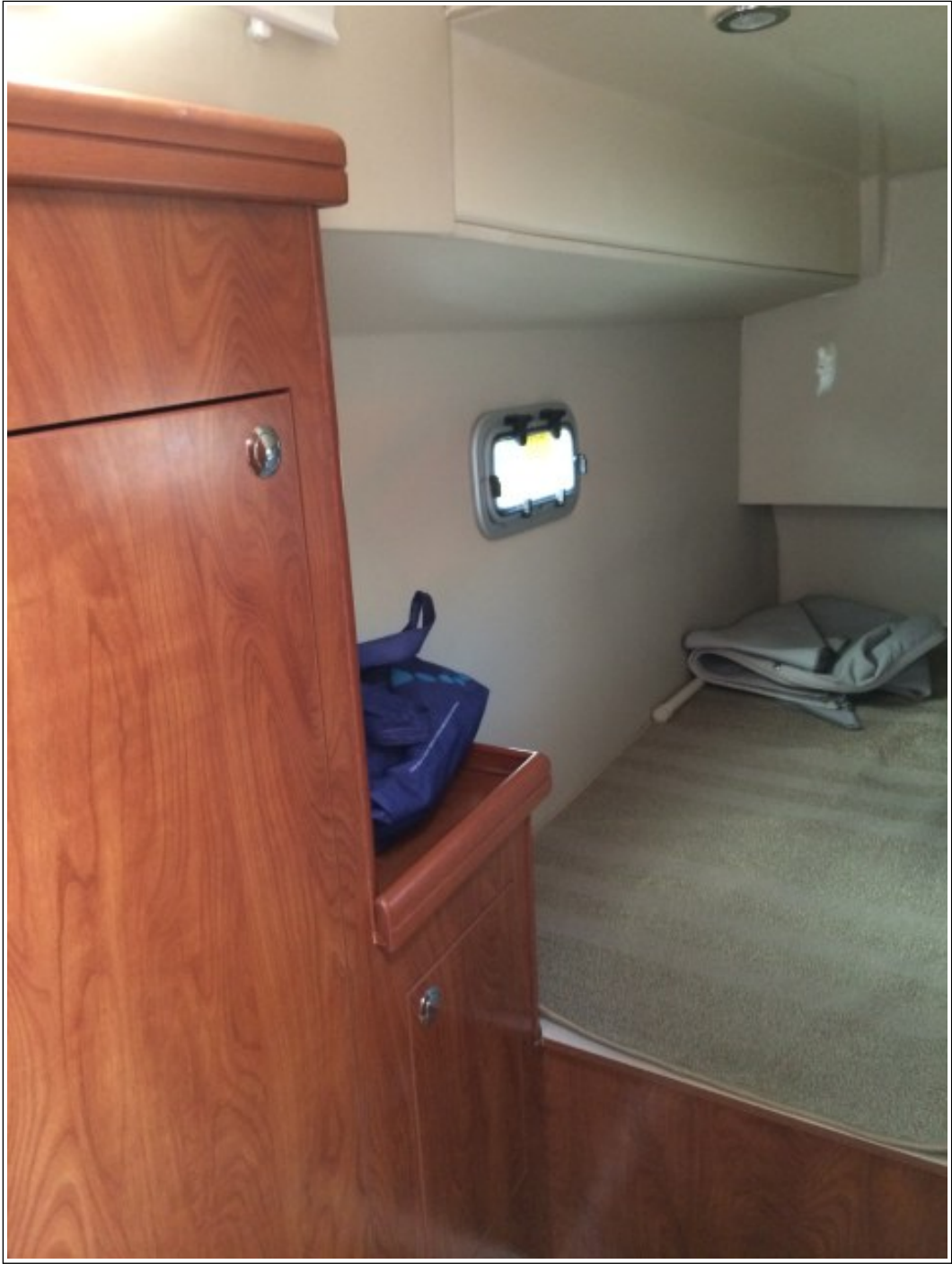


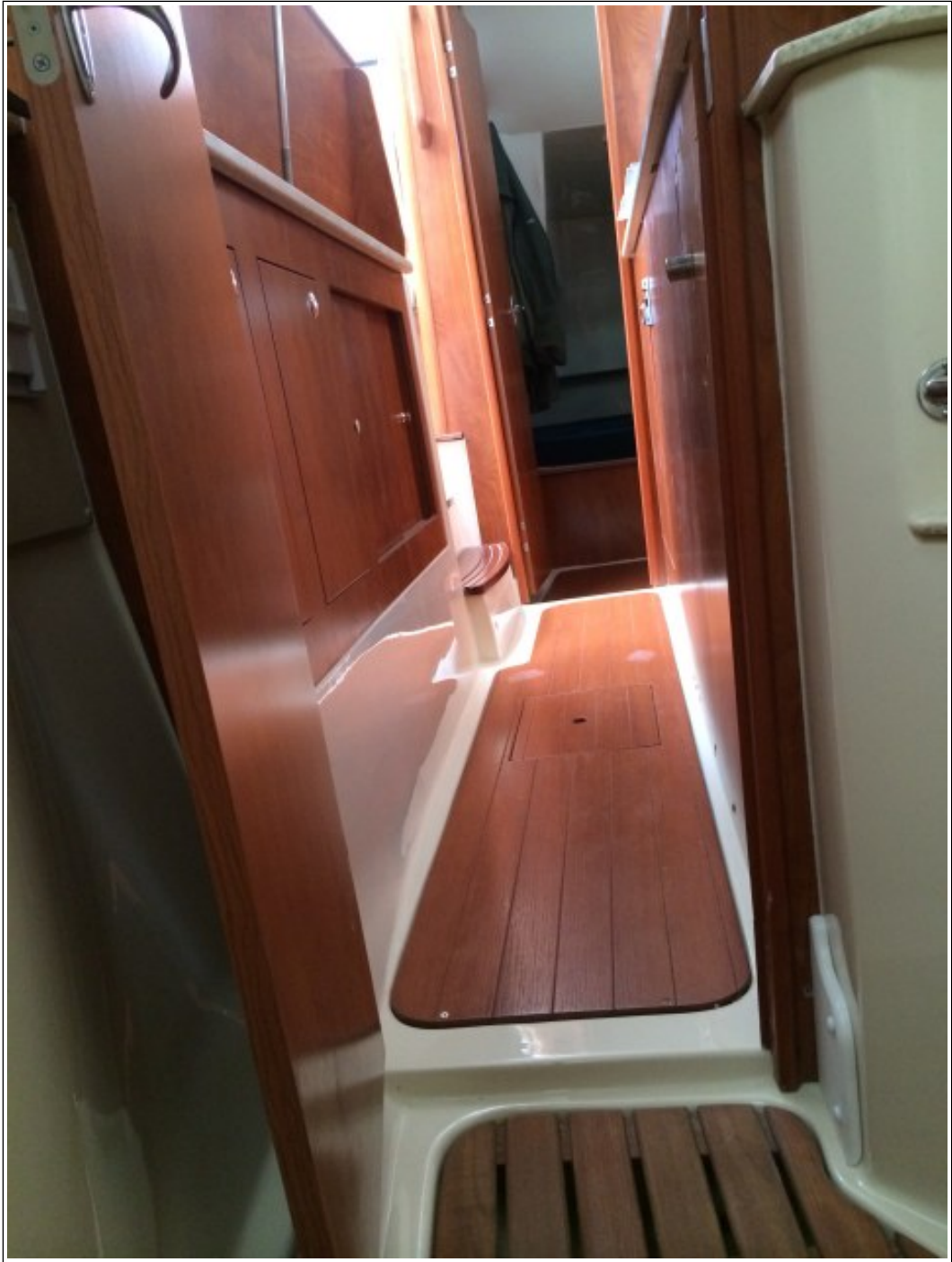
















































































Disclaimer

The Company offers the details of this vessel in good faith but cannot guarantee or warrant the accuracy of this information nor warrant the condition of the vessel. A buyer should instruct his agents, or his surveyors to investigate such details as the buyer desired validated. This vessel is offered subject to prior sale, price change, or withdrawal without notice. Photos may not properly reflect the current condition of the actual vessel offered for sale. In some cases stock photographs may have been used.

Mechanical Disclaimer

Engine and generator hours are as of the date of the original listing and are a representation of what the listing broker is told by the owner and/or actual reading of the engine hour meters. The broker cannot guarantee the true hours. It is the responsibility of the purchaser and/or his agent to verify engine hours, warranties implied or otherwise and major overhauls as well as all other representations noted on the listing.

Dinghy Disclaimer

All dinghies are considered separate vessels and should have separate titles and documents. There is no guarantee as to the title of the dinghy on this vessel so Buyer accepts that while he may receive the dinghy included in the transaction, he may not receive the proper title to it.