

1999 Island Spirit 35 FAT CAT



## Basic Vessel Summary

<b>Manufacturer:</b>	FORTUNA
<b>Model:</b>	Island Spirit 35
<b>Model Year:</b>	1999
<b>Year Built:</b>	1999
<b>Type of Yacht:</b>	Sail
<b>Price:</b>	\$125,000
<b>Condition:</b>	Used
<b>Status:</b>	Sold
<b>Location</b>	Lighthouse Point Florida (FL)
<b>Manuf. Length:</b>	35' ( 10.67 m)
<b>Maximum Draft:</b>	3' 5" ( 1.04 m)
<b>Minimum Draft:</b>	3' 5" ( 1.04 m)
<b>Beam:</b>	22' ( 6.71 m)
<b>LWL:</b>	34' ( 10.36 m)
<b>Mast Height Clearance:</b>	57' ( 17.37 m)
<b>No. of berths:</b>	4
<b>No. of Cabins:</b>	4
<b>No. of Heads:</b>	2
<b>Fuel Capacity:</b>	85 g
<b>Water Capacity:</b>	110 g
<b>Holding tank:</b>	25
<b>Cruise speed:</b>	9
<b>Max speed:</b>	15 Knots
<b>Weight - Displacement:</b>	7.5 ton (15000 lb)
<b>Hull Material:</b>	Fiberglass Reinforced Plastic- FRP

<b>Hull Configuration:</b>	Catamaran
<b>Engine Manufacturer</b>	Sonic Silette
<b>Engine Model</b>	Lynch D135
<b>Engine Year</b>	2012
<b>Engine Horsepower</b>	17
<b>Engine Hours (Port)</b>	230
<b>Engine Hours (Starboard)</b>	120
<b>Engine Type</b>	Electric
<b>Engine Configuration</b>	Dual
<b>Does the boat have a generator?</b>	Yes
<b>Generator Model</b>	Lombardini
<b>Generator Operating Hours</b>	230
<b>Generator Horsepower</b>	10
<b>Does a dinghy come with the boat?</b>	No

## Full Specification

### Layout & Accommodations

Sleeps eight

four staterooms

Two large heads with showers mid ship port and starboard

Crew and guest queen size tempore foam berth

Teak flooring, on screens on salon glass

Large comfortable U shaped dining area seats eight

Chart table & navigation station with chart storage, convenient access to electronics and electrical connections

Cruising guide storage

Numerous lockers with multiple shelves

Handholds

Halogen & LED lighting

Bimini with Isinglass windshield and covers

Custom hardtop with lighting and speakers

One AC unit 16,000 BTU for main saloon and front berths

One AC unit 5200 BTU for the port aft cabin

electric fresh or saltwater heads in both baths

### Galley

Galley up

On port side

ample ventilation  
3 burner propane stove with oven  
Frigoboat AC/DC refrigeration  
New stainless steel sink  
Large storage for all pantry and salon  
Well thought out large counter space for all cruising cooking needs  
Daewoo microwave

## Deck & Equipment

Two hydro Bubble anchors 1 60' chain with 200 ft rode 2 with 6' chain 150' rode  
Lewmar windlass accepts 3/8 in rode and chain  
Bow pulpits with seats  
lifelines with quick disconnects for boarding  
Custom Hardtop  
Fresh water washdown  
Coast Guard safety package  
Navigation lights  
LED tricolor  
Fenders and lines  
2006 trampolines  
Custom Cockpit cushions  
Double seat helm  
Folding swim ladder  
Dingy davits with block and tackle

## Electronics & Navigation

Electronic and Navigation Equipment  
TrimAuto helm ST-7000 autopilot  
Garmin GPS Map and chart plotter 4208  
Raymarine ST60, Tridata  
Sunto Compass  
Cobian Marine VHF with new antenna, ASI, cables  
external microphone and DC charger port  
Clarion AM/FM radio Sat and Ipad with salon and cockpit speakers  
Batteries  
4D starting  
8D house  
8 PC 1800 Odessey batteries for engine bank  
10 KW Generator  
20 AMP master volt house charger

2 50 amp 48 volt Master volt chargers for engine banks  
Cell phone amplifier with long distance antenna  
50 ft 50 amp shore power line with galvanic isolator  
New windex

### Electrical, Power & Plumbing

2 50 Amp 48 volt Master volt chargers  
Electric macerating freshwater toilets  
2 5 gallon holding tanks  
6 electric bilge pumps  
10 gal electric hot water heater  
New AC in Salon.

### Engine & Mechanical

Lynch D135 electric motors with Sonic silette saildrives  
2012 Lombardini D702 10Kw generator

### Sails & Rigging

940 sq ft fully battened mainsail 4 yrs old  
Sparcraft single diamond spreader mast with 3 internal halyards and topping lift  
sparcraft boom with outhaul and three reefing point with lines  
Genoa and Trisail control lines led to aft cockpit  
Mainsail control on mast  
Profurl roller furling head stay  
three Harken 40 winches

### Additional Information

Wiring and plumbing completely refurbished  
fuel tanks polished and reglassed  
three locker in cockpit  
4 lockers forward  
Teak veneer installed with new wooden doors in all cabins  
Aft cabins headliners  
This boat has run the AC or dehumidifier 24/7 since recommission no mold  
Props April 2014  
New installed zincs

Image Gallery

















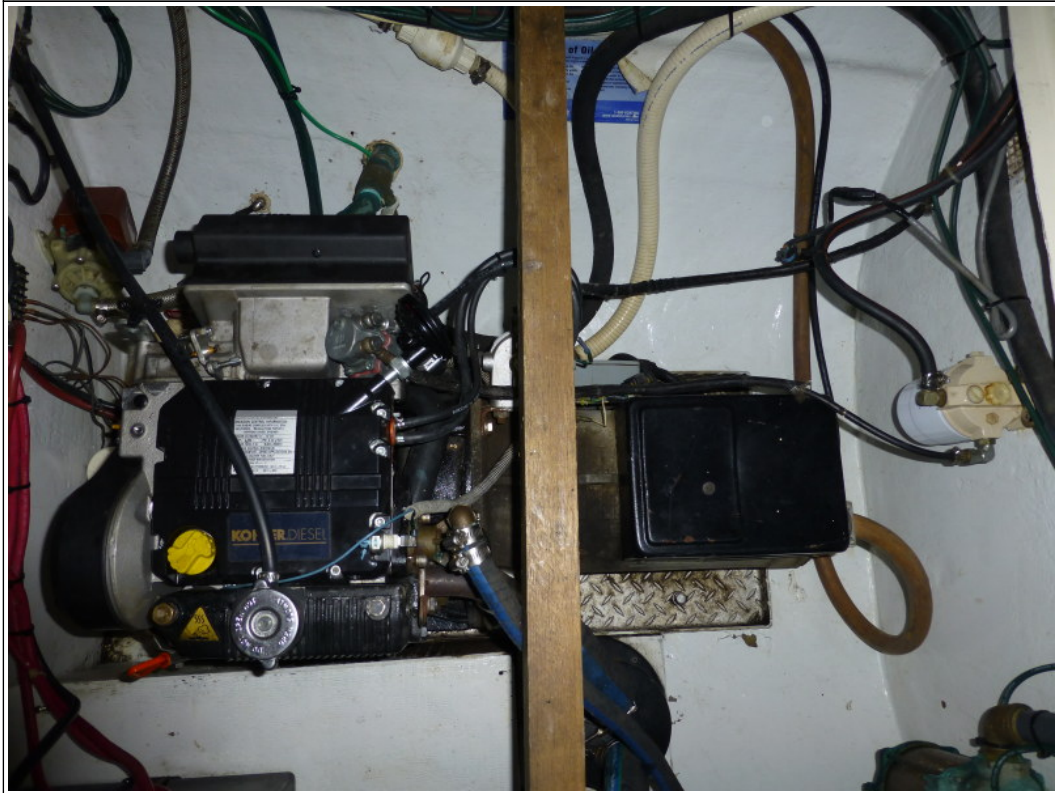
















### **Disclaimer**

The Company offers the details of this vessel in good faith but cannot guarantee or warrant the accuracy of this information nor warrant the condition of the vessel. A buyer should instruct his agents, or his surveyors to investigate such details as the buyer desired validated. This vessel is offered subject to prior sale, price change, or withdrawal without notice. Photos may not properly reflect the current condition of the actual vessel offered for sale. In some cases stock photographs may have been used.

### **Mechanical Disclaimer**

Engine and generator hours are as of the date of the original listing and are a representation of what the listing broker is told by the owner and/or actual reading of the engine hour meters. The broker cannot guarantee the true hours. It is the responsibility of the purchaser and/or his agent to verify engine hours, warranties implied or otherwise and major overhauls as well as all other representations noted on the listing.

**Dinghy Disclaimer**

All dinghies are considered separate vessels and should have separate titles and documents. There is no guarantee as to the title of the dinghy on this vessel so Buyer accepts that while he may receive the dinghy included in the transaction, he may not receive the proper title to it.