

**Catamaran for Sale**  
2009 Lagoon 440 PANDION



## Basic Vessel Summary

<b>Manufacturer:</b>	LAGOON
<b>Model:</b>	Lagoon 440
<b>Model Year:</b>	2009
<b>Year Built:</b>	2009
<b>Type of Yacht:</b>	Sail
<b>Price:</b>	\$370,000
<b>Condition:</b>	Used
<b>Status:</b>	Acceptance of Vessel
<b>Location</b>	Jekyll Island Georgia (GA)
<b>Manuf. Length:</b>	44' 0" ( 13.41 m)
<b>Maximum Draft:</b>	4' 3" ( 1.30 m)
<b>Beam:</b>	25' 3" ( 7.70 m)
<b>Mast Height Clearance:</b>	70' ( 21.34 m)
<b>No. of Cabins:</b>	3
<b>No. of Heads:</b>	3
<b>Fuel Capacity:</b>	170 g
<b>Water Capacity:</b>	240 g
<b>Holding tank:</b>	60 gallons
<b>Cruise speed:</b>	7
<b>Max speed:</b>	14
<b>Weight - Displacement:</b>	10 ton (20000 lb)
<b>Hull Material:</b>	Fiberglass
<b>Hull Configuration:</b>	Catamaran
<b>Engine Manufacturer</b>	YANMAR
<b>Engine Model</b>	4JH4AE (Port) 4JH57 (Starboard)

<b>Engine Year</b>	2009 (Port) 2015 (Starboard)
<b>Engine Horsepower</b>	54 (Port) 57 (Starboard)
<b>Engine Hours (Port)</b>	3077
<b>Engine Hours (Starboard)</b>	2049
<b>Engine Type</b>	InBoard
<b>Engine Configuration</b>	Twin
<b>Engine Fuel Type</b>	Diesel
<b>Engine Condition</b>	Used
<b>Does the boat have a generator?</b>	Yes
<b>Generator Model</b>	Cummins Onan
<b>Generator Operating Hours</b>	2400
<b>Generator Horsepower</b>	11.5 KW 110V 60HZ
<b>Does a dinghy come with the boat?</b>	Yes
<b>Dinghy Model</b>	Achilles
<b>Dinghy Length</b>	11.2'
<b>Dinghy Model Year</b>	2010
<b>Dinghy Outboard Manufacturer</b>	YAMAHA 4 Stroke
<b>Dinghy Outboard Horsepower</b>	20
<b>Dinghy Outboard Year</b>	2010

## Full Specification

### Layout & Accommodations

Forepeak cabin bunk decks and cabinetry from factory, just add a mattress

Washing machine in master quarters

Delightful full size walk in shower

All three heads electric flush with fresh water

Flatscreen TV in each cabin, 43" TCL flat screen LED in main salon

Port forward cabin serves as a convertible shop with workbench, vise, and lots of storage shelves

### Galley

Under cabinet mounted Microwave 110V

Water purifier with separate faucet, sea water foot pump with separate faucet

Three burner propane cooktop and Eno oven, two dedicated propane tanks located in cockpit

Triple stainless steel sinks

Upgraded stainless fridge and freezer 12V

Top loading custom freezer in cockpit area

Corian counter tops

## Deck & Equipment

All new ground tackle installed in 2022 – galvanized steel Rocna33 anchor (73 lb), with 150 ft G4 7/16" (12 mm) galvanized steel anchor chain, and Mantus stainless steel anchor swivel Quick 1500W Anchor Windlass, complete rebuild in 2022 (all shaft seals and bearings replaced)

Full set of cockpit cushions in good condition

Fly bridge has 2 custom helm seats with arm rests

Large custom stainless steel arch aft. \$15,000 with six solar panels, generating over 800 watts power

Custom Rub rail installed \$4000 value

Teak Cockpit Floor

Two electric Harken self tailing two-speed winches at Helm, each with two Harken remote foot switches; and two manual two-speed self tailing Harken winches at Helm; and 1 self tailing Harken manual winch in cockpit for lifting dinghy

GalleyMate (Made in Australia) high quality propane BBQ with rotisserie, dedicated 20 lb tank

Nav Station throttle controls

18 ft Fiorentino Sea Anchor with 450 ft rode

Shark Drag Drogue with 65 ft bridle legs (bridle can be used for emergency steering)

4 person Winslow Life Raft

Life Sling MOB device

Rear cockpit surround with white mesh enclosure provides bug-free shade

Fortress secondary anchor with 50 ft 3/8 inch galvanized chain

New Bimini and dodger (sunbrella) installed 2023 (\$1,500)

Marinco yellow 50A 50 ft. shore power cord, new Marinco 50A 50 ft. shore power cord purchased in 2019, including a Marinco Reverse Y Adapter to convert two 30A outlets to 50A service.

Aluminum LPG 10 lb. tanks for galley stove/oven, and new 10 lb. painted steel tank (2024).

## Electronics & Navigation

Complete new Raymarine electronics package installed in 2022 (\$30,000) including:

Two Raymarine AXIOM MFD chartplotters (at helm and nav station), with updated Navionics charts for Florida and Bahamas

Raymarine Evolution EV-400 Sailing Vessel Autopilot pack with P70R rotary control head, and remote Smart Controller

Raymarine Quantum 2 Doppler Radar

Six Raymarine color LCD i70s instrument displays to monitor wind, speed, depth, course info, etc.

Raymarine wind transducer and mast cable

Raymarine AIS 700 transmitter and receiver integrated in AXIOM chart plotters  
Fusion MS-RA70 Sound System with JL Audio 600 watt marine channel amplifier  
Two Blue Sky SB3024 solar charge controllers installed in 2023

In addition, vessel has:

Standard Horizon Quantum GX5000S VHF radio with PA system, auto fog horn, and DSC  
BW8 Bilge monitoring system with four sensors per hull

JL Audio speakers

Blue Sky solar charge control panel in salon

Raymarine Joystick steering from salon at Nav Station

LED lights throughout

Biometric security locking SAFE

## Electrical, Power & Plumbing

New house battery bank installed in 2023 with VMAX 6 volt 225 AH AGM batteries, totaling 1,125 AH, connected in series parallel configuration for 12-volt system (\$3,000)

Two new Balmar 70 amp alternators, with upgraded Balmar MC-618 and Centerfield voltage regulators installed, and new Yanmar ECM module installed on starboard engine in 2021 (\$5,800)

New 12 volt starter battery for dinghy 20 HP Yamaha electric start, installed in December 2023

Bauer Jr. Dive compressor 110V installed

All USA Electrical System factory installed

Xantrex Freedom 3000 charger/inverter 12V to 110V 3000 Watt, Xantrex battery monitor

Dolphin 12-volt 80 amp charger for starting batteries

Galvanic isolator to prevent electrolysis when running shore power

Spectra Ventura 150 Watermaker (rebuilt by Spectra in 2022) produces about 6.5 - 7 gph on 12 volt 3.5 amps

Fresh water 12-volt wash down pump for anchor and chain, installed in 2023

New automatic and back up bilge pumps installed in both starboard and port keels in 2023

## Engine & Mechanical

Second set of Yanmar engine controls at Nav station.

FlexoFold three blade folding Bronze propellers. New port prop hub installed in April 2023.

Engines and saildrives recently serviced during haul out in 2023, and subsequent preventative maintenance in 2023 and 2024, including SD 50 saildrives drive cones lapped, shaft seals replaced and gear oil changed, seawater pump impellers replaced, coolant changed, engine oil and filters changed, RACOR fuel filters replaced, fan belts replaced, new saildrive and prop anodes installed

Spare parts and backup components inventory.

Cummins Onan generator 11.5 KW 110V 60 hz, 2400 hours. Refit with custom raw water

pump and filter that eliminates common issues with cooling on Lagoon 440s. Supplemental Racor fuel filter system added. Engine oil and filter changed in December 2023, new belt installed in March 2024.

Dual Racor 500 fuel filters on each inboard diesel engine with changeover valve to change fuel filter on the fly.

12-volt fuel transfer system passing through a dedicated Racor 500 filter to polish fuel from one fuel tank to the other.

Manual switched electric booster pump on each engine to prime filters or act as a backup if primary fuel pump fails.

Middle fresh water tank, 80 gal, is set up to convert to diesel storage in minutes if ever desired.

Both engine rooms have been fitted with FireBuoy emergency fire extinguishers that deploy with excessive heat and are monitored and alarmed at the helm.

## Sails & Rigging

Leisure Furl Boom furling system by Forespar, designed in New Zealand, with custom-made main sail built by Mack Sails (\$30,000)

Installed new 1,000 sq ft Code Zero furling sail built by Mack Sails in 2018 (\$3,000) and refurbished by Mack Sails in 2023

Refurbished furling jib sail in 2019

Bowsprit pole factory installed

Harken Traveler car system upgraded to avoid typical 440 early wear

Blocks on traveler upgraded to Harken Black Magic with more robust bearing design

WichardGybEze Boom Preventer softens the effect of accidental gybe by "easing" the boom to lee during an event.

Wichard Jack lines for safety from stern to bow

## Additional Information

Dinghy

2010 11.9 ft Achilles Dinghy with electric start Yamaha 20 hp outboard engine, with RACOR external fuel filter system. Engine is serviced on regular schedule, including oil and filter changes in December 2023, and water pump impeller replaced in March 2024. New 12-volt starter battery installed in December 2023. New RACOR fuel filter installed in January 2024. New bottom paint Pettit Hydrocoat (black) antifouling paint, Zincs, sail drive service during haul out in February 2023.

Haul out May 2024

Sail drives serviced with new oil and seals

New zincs

Replaced rudder bearings

Flexifold Props serviced and lubed with Prop-Speed antifouling

Survey including out of water inspection available completed May 2024

Image Gallery

















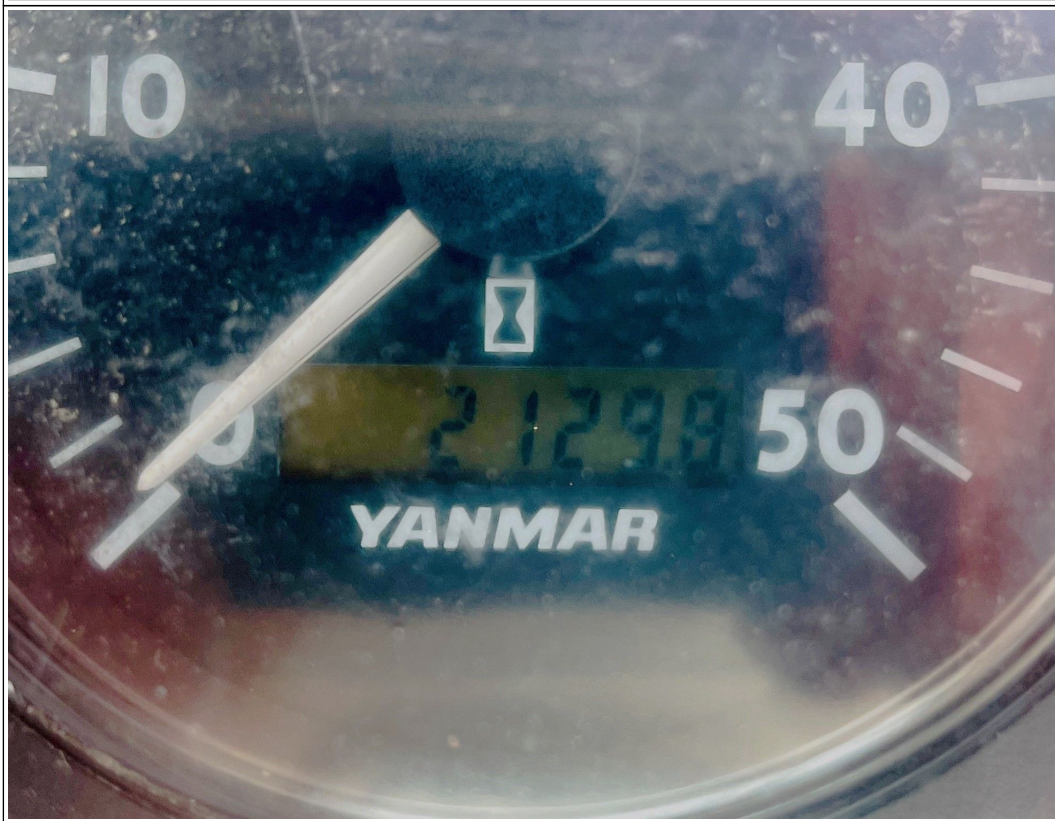




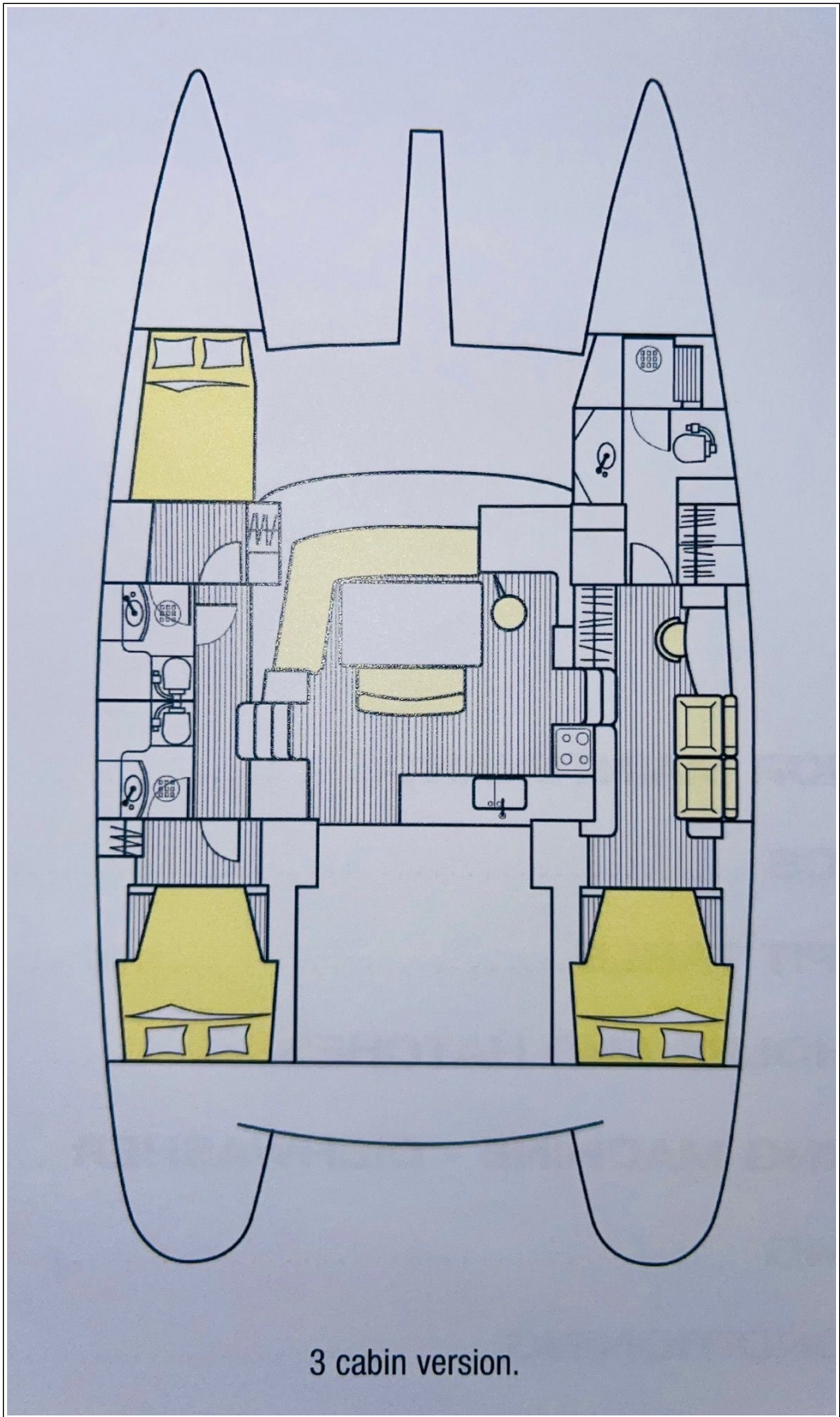




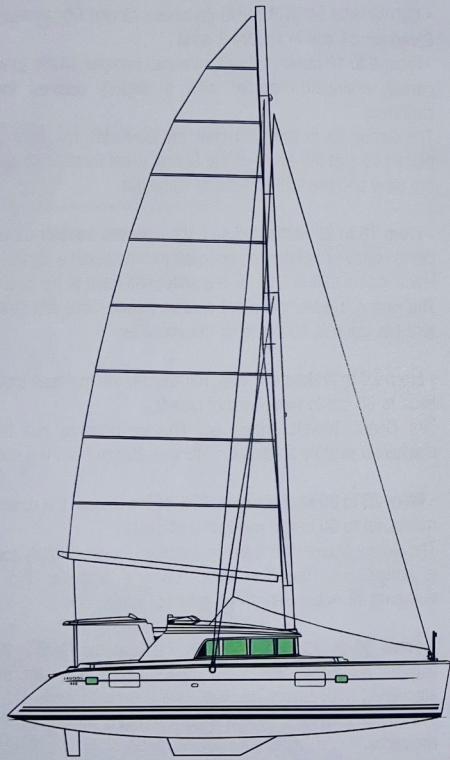








3 cabin version.



**SURFACE AREA OF MAINSAIL  
STANDARD EUROPE MAST**

Mainsail high: 71.30 m2.  
Mainsail 1 reef: 59.10 m2.  
Mainsail 2 reefs: 44.20 m2.  
Mainsail 3 reefs: 29.40 m2.

**SURFACE AREA OF MAINSAIL  
SHORT MAST**

mainsail high: 58.70 m2.  
mainsail 1 reef: 39.30 m2.  
mainsail 2 reefs: 31.20 m2.  
mainsail 3 reefs: 21.10 m2.





### **Disclaimer**

The Company offers the details of this vessel in good faith but cannot guarantee or warrant the accuracy of this information nor warrant the condition of the vessel. A buyer should instruct his agents, or his surveyors to investigate such details as the buyer desired validated. This vessel is offered subject to prior sale, price change, or withdrawal without notice. Photos may not properly reflect the current condition of the actual vessel offered for sale. In some cases stock photographs may have been used.

### **Mechanical Disclaimer**

Engine and generator hours are as of the date of the original listing and are a representation of what the listing broker is told by the owner and/or actual reading of the engine hour meters. The broker cannot guarantee the true hours. It is the responsibility of the purchaser and/or his agent to verify engine hours, warranties implied or otherwise and major overhauls as well as all other representations noted on the listing.

### **Dinghy Disclaimer**

All dinghies are considered separate vessels and should have separate titles and documents. There is no guarantee as to the title of the dinghy on this vessel so Buyer accepts that while he may receive the dinghy included in the transaction, he may not receive the proper title to it.

