

2017 Lagoon 42 ISLAND HOPP'R



Basic Vessel Summary

Manufacturer:	LAGOON
Model:	Lagoon 42
Model Year:	2017
Year Built:	2017
Type of Yacht:	Sail
Price:	\$565,000
Condition:	Used
Status:	Catamaran for Sale
Location	Cape Canaveral Florida (FL)
Manuf. Length:	42' 0" (12.8 m)
Maximum Draft:	4' 1" (1.24 m)
Beam:	25' 3" (7.70 m)
LWL:	41' (12.50 m)
Mast Height Clearance:	71' 8" (21.84 m)
No. of Cabins:	3

No. of Heads:	3
Fuel Capacity:	158 g
Water Capacity:	79 g
Holding tank:	60
Weight - Displacement:	13.23 ton (26460 lb)
Hull Material:	Fiberglass
Hull Configuration:	Catamaran
Engine Manufacturer	YANMAR
Engine Model	4JH57
Engine Year	2017
Engine Horsepower	57
Engine Hours (Port)	1190
Engine Hours (Starboard)	1190
Engine Type	InBoard
Engine Configuration	Twin
Engine Fuel Type	Diesel
Engine Condition	Used
Does the boat have a generator?	Yes
Generator Model	Onan 13.5Kvh
Generator Operating Hours	500
Does a dinghy come with the boat?	No

Boat Description:

This highly sought after 2017 Lagoon 42 Owner's Version is highly upgraded, only lightly used, has been lovingly maintained, and is 100% ready to cruise!

Step aboard this sleek, modern design and enjoy the voluminous space, abundance of natural light, and great usability. The Lagoon 42 is a great balance of a very comfortable vessel for extended cruising and living as well as a welcoming space for entertaining. The current owners prepared the boat to cruise the Bahamas this winter, with "all systems go." However due to a very last-minute change of plans they have decided to offer her up for sale.

This is your opportunity to purchase a boat that is truly ready to leave the dock and cruise today!

Major Highlights:

Desirable 3 cabin Owner's Version Upgraded 57hp Yanmar motors with 800W of solar (full system new in 2023) Cruise RO 30gph Watermaker (new 2021) Highfield CL310 Tender w/ 20hp Tohatsu motor and helm station (new 2023) Onan 13.5Kvh Generator with

Full Specification

Layout & Accommodations

3 cabin and 3 head owner's layout with all US specifications and power.

An ingenious deck layout: The mast is located further aft with a self-tacking jib to guarantee performance under sail and ease of handling. All operations can be controlled from one place.

An ergonomic helming station at the coachroof bulkhead, offering the following advantages:

- Direct communication between the cockpit and saloon
- Direct access to the coachroof and the boom
- A composite bimini with a sliding panel to ensure a good view of the sails
- A closure panel for helming station safety when under way

A cozy cockpit, with smooth, elegant curves:

- A single level from the aft platform to the saloon: a structural "revolution", entirely new ergonomics that ensure excellent use of space and excellent air circulation
- A large glazed door that occupies the entire width of the coachroof, and provides access to the unparalleled internal volumes.

Stepping down into the lower cabins, enjoy the space of the owners suite with abundant storage, large private head with shower, and very comfortable bed. On the other side of the vessel, two very well appointed guest cabins each with private head to ensure your guests will enjoy their time aboard. The suspended steps at the transom provide a whole new perception of the boat: a continuous, wide, and inviting platform worthy of a large vessel.

Deck & Equipment

Upper storage in Saloon on Starboard Side

Electric winch to Port

Flag Halyard on spreaders

Dinghy Hoist System

110v electric system with 40 AMP battery charger

2 additional service batteries 140 AMP

Battery Controller

Second Fuel Tank (Both tanks 79gal)

Curtains on all Portholes

Leather bulkhead organizers in cabins

Indirect lighting in cabins and saloon

Waterproof speakers in cockpit

Fusion sound system with speakers in saloon

B&G navigation pack

Teak forward pulpit seats (replaced 2024)

Sea & Fresh water foot pumps in Galley
Freshwater Dock Inlet
Sea & Fresh deck washdown pump

Electronics & Navigation

Plotter
Autopilot
Compass
GPS
Cockpit Speakers
VHF

Electrical, Power & Plumbing

Shore Power Inlet
Generator
Inverter
Depthsounder
Radar

Inside Equipment
Electric Bilge Pump
Oven
Manual Bilge Pump
Microwave Oven
Air Conditioning
Electric Head
Heating
Hot Water
Refrigerator
Fresh Water Maker
Deep Freezer

Sails & Rigging

Steering Wheel
Electric Winch

Additional Information

- Square Top Mainsail and Jib from Incidence
- Code 0 Rig and Pole by Mack Sails
- Lazy Bag with natural cover

- Aft Cockpit seat cushions
- Teak Aft Cockpit floor
- Coffee Table
- 12V Isotherm Cockpit Fridge (replaced in 2021)
- Composite Bimini with Windscreen and Stairs
- Upgrade to Yanmar 57Hp motors
- Pair of 3-Blade Folding Props
- Inverter
- Generator
- USB sockets in each cabin
- Quietflush Electric Heads
- Berth in Port Bow compartment (Captains Bunk)
- Cruiseair A/C
- Doubleberth in Saloon
- Fans in Saloon and Cabins
- Deepfreeze
- Under-bed spring slats
- B&G Autopilot Remote
- B&G 12" display at helm
- B&G 4G Radar
- B&G wifi module
- TV Antenna in Mast
- B&G VHF
- 2nd Handset for VHF
- 196' Chain with 44lb anchor
- 50 Amp Shore power cord (replaced 2021)
- Life-raft safety pack

Recent Upgrades & Maintenance

- Scuba Tank Rack (2021)
- Commodizers added to all 3 heads (added 2021, to avoid "head smell")
- 4x 200aH AGM batteries (2021)
- Replaced 1000W inverter (2022)
- Cockpit sunshade (2022)
- Rigging Inspected (2022)
- Mantus Anchor Bridle and Swivel (2022)
- Bow and coachroof cushions (2022)
- Sail drive seals replaced (2022)
- Trampoline Replaced (Nov 2023)
- New mainsail bag (2023)
- Full polish and wax (2023)
- New Engine and Gen Start Batters (2023)

- Helm Enclosure Repaired where necessary (2023)
- Regular Gen and Engine Maintenance and Oil Samples (2024)
- Bottom Paint (2024)
- Wired for Starlink (2024)
- Coast Guard Vessel Safety Inspection (2024)

Image Gallery



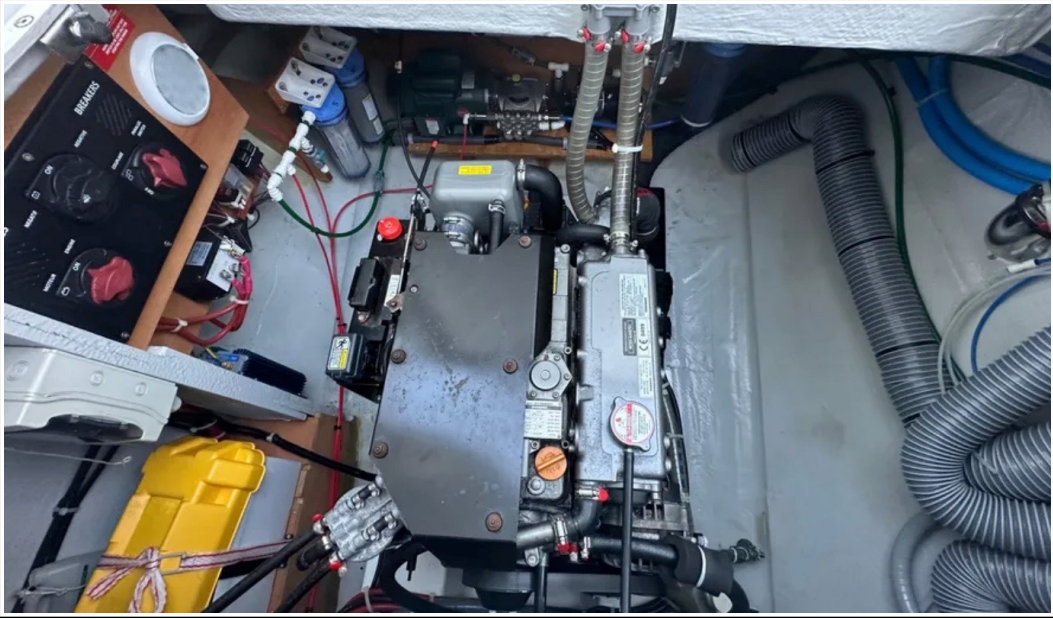
















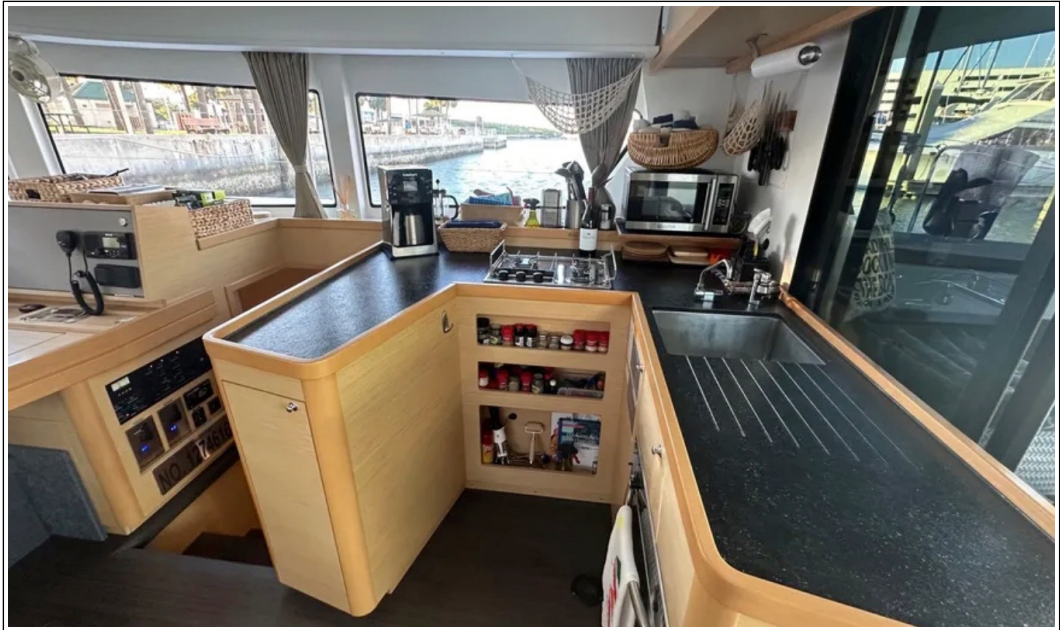






















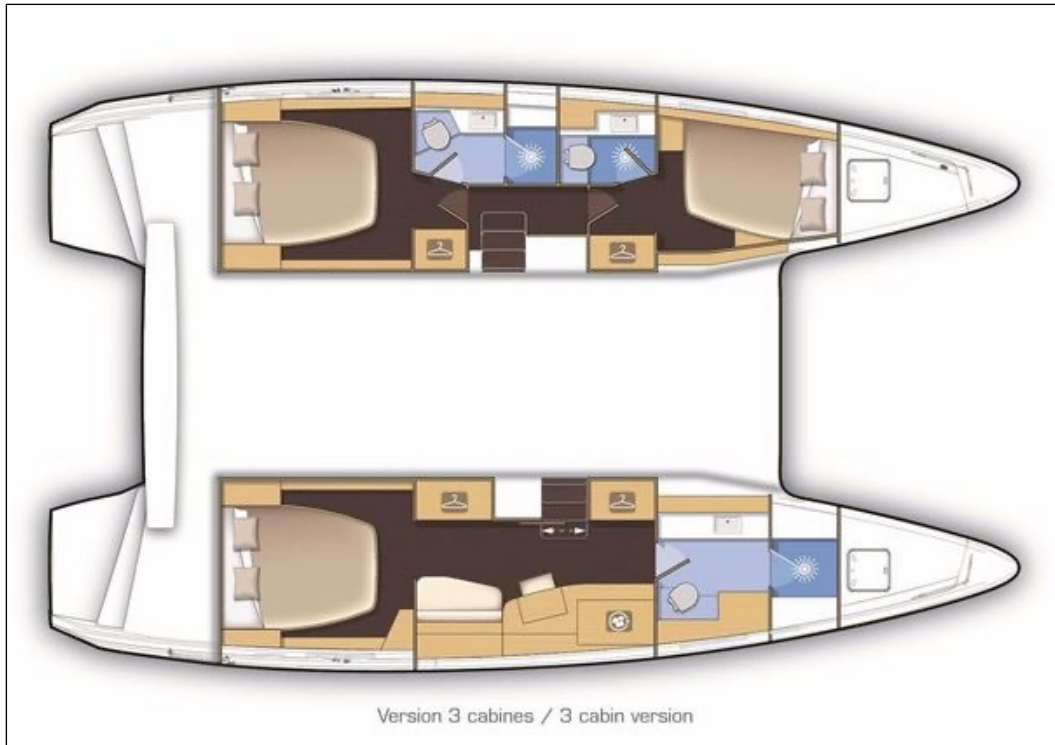












Disclaimer

The Company offers the details of this vessel in good faith but cannot guarantee or warrant the accuracy of this information nor warrant the condition of the vessel. A buyer should instruct his agents, or his surveyors to investigate such details as the buyer desired validated. This vessel is offered subject to prior sale, price change, or withdrawal without notice. Photos may not properly reflect the current condition of the actual vessel offered for sale. In some cases stock photographs may have been used.

Notes: This listing is courtesy of the BoatWizard MLS and may be centrally listed with another broker. It is offered as a convenience by this broker/dealer to its clients and is not intended to convey representation of a particular vessel.

Mechanical Disclaimer

Engine and generator hours are as of the date of the original listing and are a representation of what the listing broker is told by the owner and/or actual reading of the engine hour meters. The broker cannot guarantee the true hours. It is the responsibility of the purchaser and/or his agent to verify engine hours, warranties implied or otherwise and major overhauls as well as all other representations noted on the listing.

Dinghy Disclaimer

All dinghies are considered separate vessels and should have separate titles and documents. There is no guarantee as to the title of the dinghy on this vessel so Buyer accepts that while he may receive the dinghy included in the transaction, he may not receive the proper title to it.