

2018 Sunreef 60 FEEL THE BLUE



Basic Vessel Summary

Manufacturer:	SUNREEF
Model:	Sunreef 60
Model Year:	2018
Year Built:	2018
Type of Yacht:	Sail
Price:	€2,775,000
Condition:	Used
Status:	Catamaran for Sale
Location	Lisbon Portugal
Manuf. Length:	60' 4" (18.39 m)
Maximum Draft:	6' 10" (2.08 m)
Beam:	33' 5" (10.19 m)
No. of Cabins:	5
No. of Heads:	5
Fuel Capacity:	449 g

Water Capacity:	211 g
Hull Material:	Fiberglass Reinforced Plastic- FRP
Hull Configuration:	Catamaran
Engine Manufacturer	VOLVO
Engine Model	Penta D3
Engine Hours (Port)	3962
Engine Hours (Starboard)	3857
Engine Type	Inboard
Engine Configuration	Twin
Engine Fuel Type	Diesel
Engine Condition	Used
Does the boat have a generator?	Yes
Generator Model	Acuva
Generator Horsepower	19KVA, 50Hz, 230V
Does a dinghy come with the boat?	Yes
Dinghy Model	Tender Williams SportJet 395
Dinghy Outboard Horsepower	90
Dinghy Outboard Year	(complete overhaul in 2023)

Boat Description:

The Sunreef 60 is one of the most popular models Sunreef built and has the modern lines Sunreef is so famous and loved for. With the 5 cabins layout and the galley up she offers the maximum amount of guests onboard, smartly using the space such a catamaran has to offer.

Once onboard you have great sensation of being connected to the sea while the balance between open spaces and indoor spaces is well designed. In the saloon you enjoy 360° seaview and at anchor you can see the scenery also while having a meal inside on the foldable table, that offers space for up to 10 guests.

Full Specification

Layout & Accommodations

5 Cabins Galley up Layout can sleep 10 guests

All 2024 services done, many smart upgrades, ready for new owner

The open Space feeling on board, well balanced design between open and closed spaces

Galley

Cooking Equipment: New gas stove, electric oven

Microwave: Yes – stainless steel

Extractor Fan

Dishwasher

Refrigerator: New Liebherr Fridge in Galley, 1 aft cockpit fridge

Freezer with fridge

Ice Maker

Washing Machine

Deck & Equipment

Anchor Windlass: Regal

Anchors: Ultra

Anchor Chains: New stainless anchor chain 100 m

Passerelle: Hydraulic Gangway

Swimming Platform: 850kg lifting capacity hydraulic

Electronics & Navigation

COMMUNICATION & BRIDGE

VHF DSC Controller X 2: B&G

AIS: AIS700NAVTEX

Autopilot: B&G evolution autopilot

GPS: B&G Chartplotter

Magnetic Compass: Compass- 135mm

Radar: B&G Radar 4k

Depth Sounder: B&G

Chart Plotter: B&G

Wind Instruments: B&G

Searchlight

EPIRB

Electrical, Power & Plumbing

Shore Power: 2x shore power inlet 63A

Electricity Output: 3x socket 230V in cabins, 4 in saloon, 4 in dining area and 4 in galley, 2xUSB socket in each cabin and 2x in saloon

Converter: 24V to 230V for silent operation

Batteries: DC-25.6V: main switchboard, 22,4 kWh Lithium battery bank (25.6 Volts), starting batteries, DC distribution, wiring

Engine & Mechanical

Steering: 5 Spoke steering wheel (800mm diameter)

Watermakers: 1 x Searecovery 230L/h & 1x Rainman 140L/h

Fuel Filters Volvo Penta

Air Conditioning: 62000 BTU/h

Bow Thruster: Electric on Stb side hull

Fire/Bilge Pump: 2 manual/4 electrical bilge pumps

Rudder Angle Indicator

Sails & Rigging

Carbon performance Mast and boom (upgrade)

Lazy Jack and lazy Jack bag

Fully battened main sail made of Dacron, 2 reefs

Genoa double pleated made of Dacron and electric winch

Electric furling system for Genoa and Gennaker

Gennaker made out of polyester. Complete gear for Gennaker / Code 0, incl. electric furler (upgrade)

Asymetric SPI (Upgrade)

Parasailor (upgrade) 260m2

Additional Information

TENDERS & TOYS

Tenders: Tender Williams SportJet 395 – 90hp (complete overhaul in 2023)

Dive Gear: Seabob F5 S, 6-gears, max. Speed 20 km/h, Akku Ø 60 min, incl. Quick charger

Recreation: 2 Jobe wakeboards; Jobe waterski in blue

Exercise Equipment: 2 Stand up Paddels

Water Toys: Jobe Towable Binar 250 x 200 Lunar 3 and Jobe Scout

Towable 215 x 180 Scout 3

SAFETY & FIRE PROTECTION

Security Equipment

Cameras: 2 Stern Cameras

Life Jackets

Life Rafts: 2 x 8 Pax

Flares

Medical Equipment

Emergency VHF

Smoke Sensors

Fire Control System

Fire Extinguishers

Fire Alarms

REFIT HISTORY

New 100 m stainless steel anchor chain (Cromox-Duplex stainless steel CXA13 mm, DIN 766A) instead of the old, galvanized 80 m chain

New anchor winch and new anchor control system

Replacement of the cracked front nets in black instead of white (original Sunreef nets)

Installation of 8 new high-performance batteries so that the generator does not have to start at night

2nd Rainman AC240 watermaker with 140 liters per hour as a fallback line in case the large watermaker should fail

Fly: take off jacuzzi and instead install height-adjustable 190 x 110 cm teak table with 2 benches and sunshade

Installation of ACUVA UV water filter system for drinking water generation (Arrow5)

Solid teak floor in the saloon/kitchen

Additional Liebherr refrigerator with different cooling zones

New washing machine

New ice cube machine

2 new exhaust systems for Volvo Penta engines

Installation of new rudder calibration system

Purchase of Seabob F5s in black/white colour scheme

Image Gallery













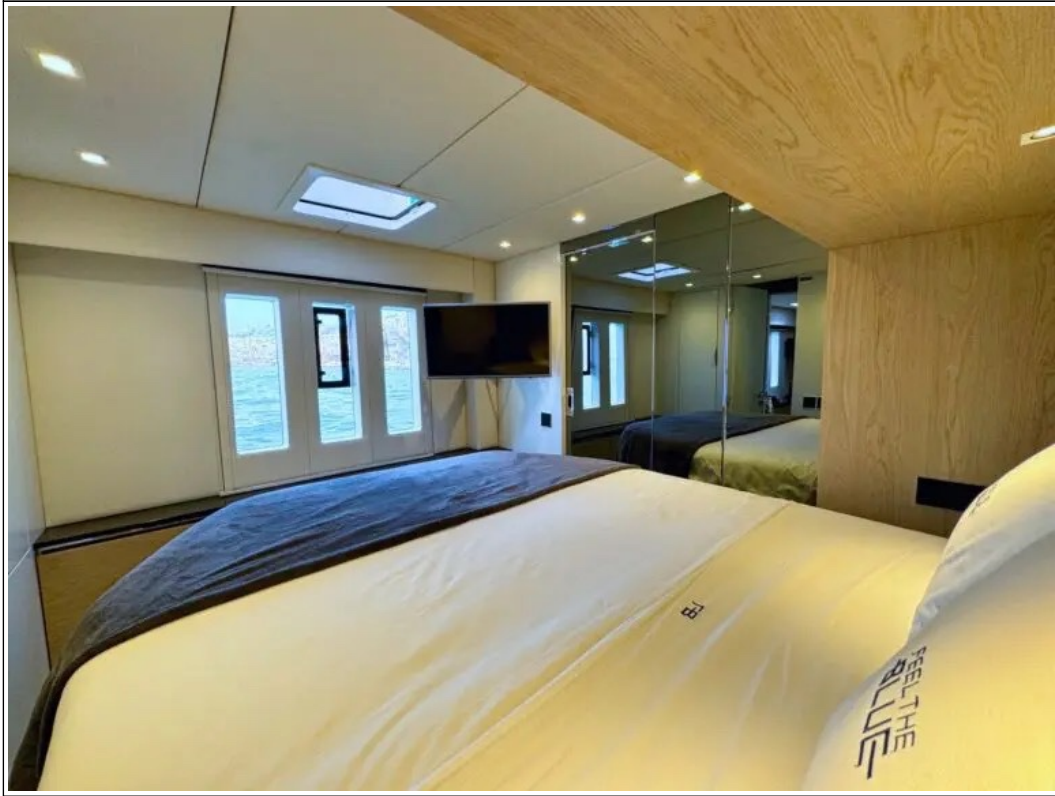




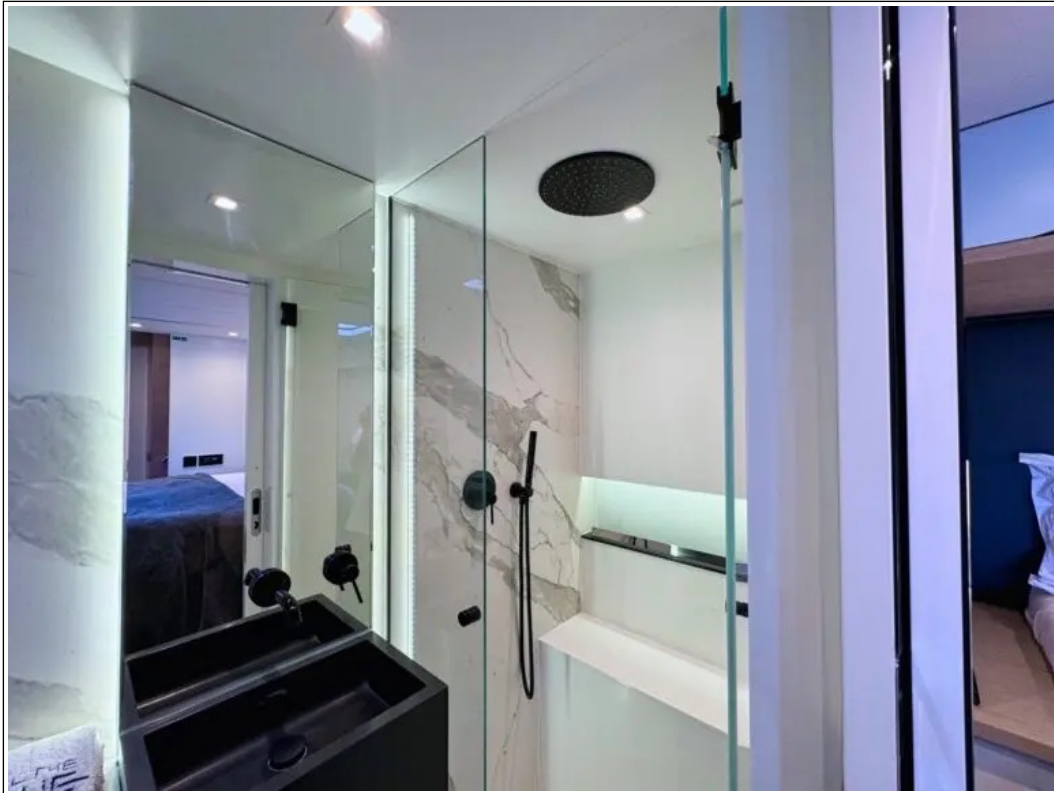












Disclaimer

The Company offers the details of this vessel in good faith but cannot guarantee or warrant the accuracy of this information nor warrant the condition of the vessel. A buyer should instruct his agents, or his surveyors to investigate such details as the buyer desired validated. This vessel is offered subject to prior sale, price change, or withdrawal without notice. Photos may not properly reflect the current condition of the actual vessel offered for sale. In some cases stock photographs may have been used.

Notes: This listing is courtesy of the BoatWizard MLS and may be centrally listed with another broker. It is offered as a convenience by this broker/dealer to its clients and is not intended to convey representation of a particular vessel.

Mechanical Disclaimer

Engine and generator hours are as of the date of the original listing and are a representation of what the listing broker is told by the owner and/or actual reading of the engine hour meters. The broker cannot guarantee the true hours. It is the responsibility of the purchaser and/or his agent to verify engine hours, warranties implied or otherwise and major overhauls as well as all other representations noted on the listing.

Dinghy Disclaimer

All dinghies are considered separate vessels and should have separate titles and documents. There is no guarantee as to the title of the dinghy on this vessel so Buyer accepts that while he may receive the dinghy included in the transaction, he may not receive the proper title to it.