

Catamaran for Sale
2006 Lagoon 440 EMILY JANE



Basic Vessel Summary

Manufacturer:	LAGOON
Model:	Lagoon 440
Model Year:	2006
Year Built:	2006
Type of Yacht:	Sail
Price:	\$335,000
Condition:	Used
Status:	Acceptance of Vessel
Location	Brunswick Georgia (GA)
Manuf. Length:	44' 0" (13.41 m)
Minimum Draft:	4' 3" (1.30 m)
Beam:	25.26' (m)
LWL:	41.83' (m)
Mast Height Clearance:	70.3' (m)
No. of Cabins:	3
No. of Heads:	3
Fuel Capacity:	170 g
Water Capacity:	240 g
Weight - Displacement:	13.393 ton (26786 lb)
Hull Material:	Fiberglass
Hull Configuration:	Catamaran
Engine Manufacturer	Yanmar
Engine Model	4JH4-E
Engine Year	2006
Engine Horsepower	54

Engine Hours (Port)	3382
Engine Hours (Starboard)	3351
Engine Type	InBoard
Engine Configuration	Twin
Engine Fuel Type	Diesel
Engine Condition	Used
Does the boat have a generator?	Yes
Generator Model	Onan KVA 220V
Generator Operating Hours	3213
Generator Horsepower	9.5KW
Does a dinghy come with the boat?	Yes
Dinghy Model	AB Dinghy 10VL
Dinghy Length	10
Dinghy Model Year	2018
Dinghy Outboard Manufacturer	Suzuki
Dinghy Outboard Horsepower	15
Dinghy Outboard Year	2019

Full Specification

[Layout & Accommodations](#)

Owners Version 3 Cabin 3 Head

[Galley](#)

2 Drawer Vitrefrigo Refrigerator and Freezer Units

GN Espace cooker with custom stainless steel counter and surround

2020 - Replaced Galley Footpump

[Deck & Equipment](#)

New Bow Seats

2019 - Custom Mooring Bridle

2022 - All new dock lines

2019 - New Helm Station Cover

2019 - Rear Enclosure

2023 - New Trampoline netting

2019 - New Bimini

2022 - Life Raft

2019 - Insulated Hatch Covers

2018 - AB Dinghy

2019 - Suzuki 15HP Outboard

Electronics & Navigation

2022 - New Analog Compass

2022 - New Autopilot and control head

2023 - Marine Kinetics 400W Wind Generator

Electrical, Power & Plumbing

2019 - Solar Arch Installed

2019 - Solar Panels - 2 banks of 350W each with separate MPPT Controller

2023 - New House Batteries 5 X 125AH

2018 - All winch switches reworked with new rubbers

House water pump replaced and have a spare

2022 - Isotemp water Heater

2020 - Freshwater toilet port head

2022 - Replaced Port HVAC pump

2018 - Replaced Starboard HVAC pump

Engine & Mechanical

2022 - Replaced push buttons on Yanmar control panels

2022 - New Throttle gear shift at helm station

2019 - Gori Folding Prop

Saildrive upgrade

Sails & Rigging

2022 - Replaced Roller Furler - Furlex 404S

2022 - Replaced Facnor Main sail cars

2022 - Replaced Diamonds

2021 - Replaced Harken Traveler Car

2022 - Replaced both boom ends and all sheaves

2020 - New Sailpack with zipper enclosure

2022 - New VHF Antennas and cable

2020 - New Quantum Main and Jib

2022 - New Windex

2022 - Control lines for Parasailor

2022 - Replaced Running Rigging

Additional Information

2020 - Windlass rebuilt, all bearings, seals and brushes. Windlass remote replaced. Windlass relay

and solenoid replaced.

2019 - Removed and re-bedded salon windows

2020 - Replaced sugar scoop rub rail

2020 - Replaced forward facing salon hatches

2022 - Replaced Hatch seals on all but coffin hatches

2022 - Escape hatches replaced by NEB

2022 - New lenses on all size 10 hatches

2022 - New upholstery and seat cushions on all salon seats and owner setee

2020 - Camfo fans installed 2 in salon 2 in rear stateroom and 1 in forward stateroom

2019 - Replaced Vinyl Ceiling Panels

2024 - New custom mattresses owner and forward staterooms

2022 - Refinished Salon table with compass rose veneer

2019 - Replaced lights in owners stateroom

2020 - Bead Blastine all surfaces below waterline, moisture barrier paint

2023 - Seahawk bottom pain, Biocop Dark Blue, Annual Maintenance

2019 - Replaced anchor light fixture and new LED lamp (Anchor/Tri-color/SOS

2023 - New LED White nav light moved from stanchion to arch

2022 - EPIRB

Image Gallery























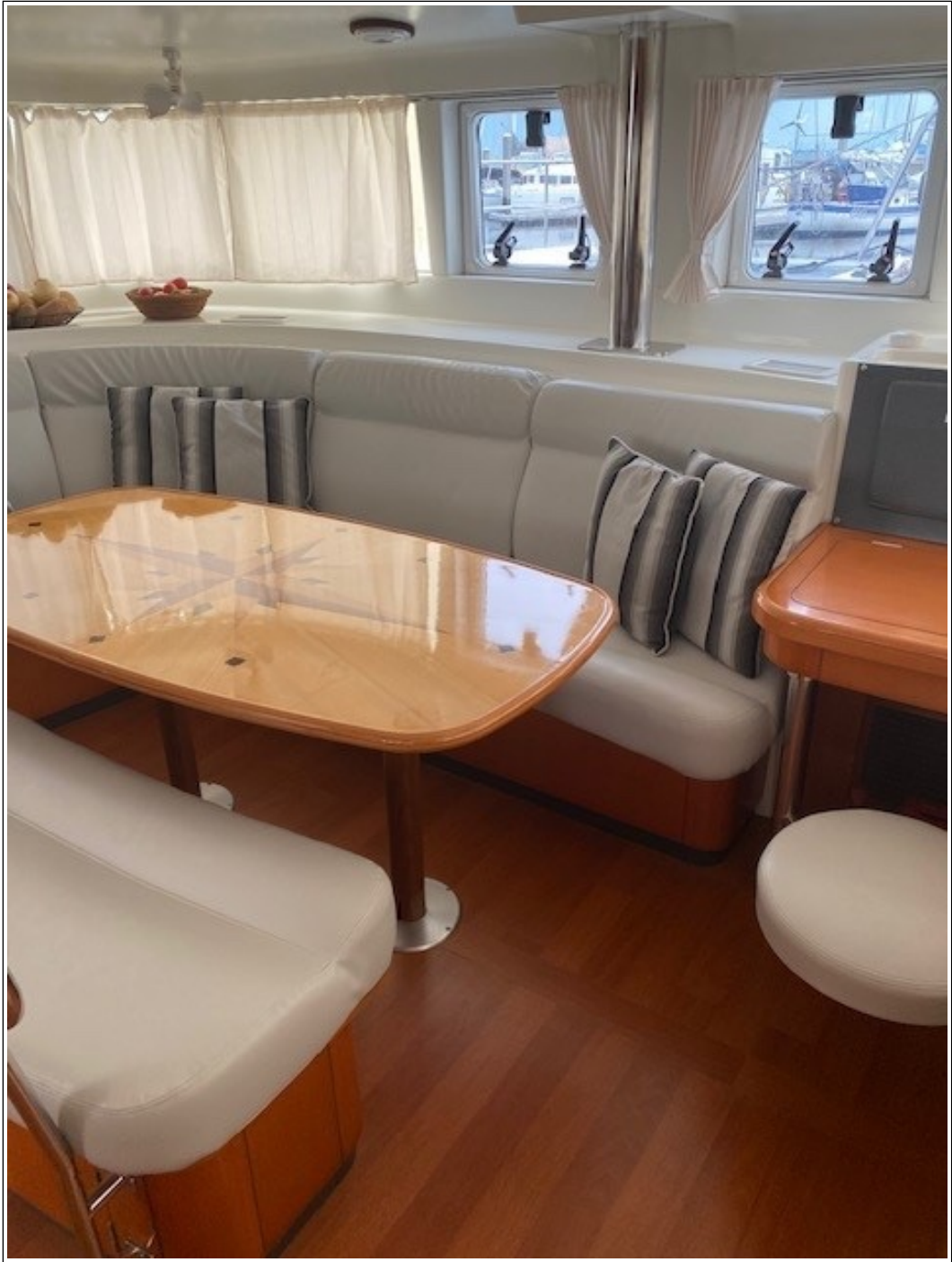


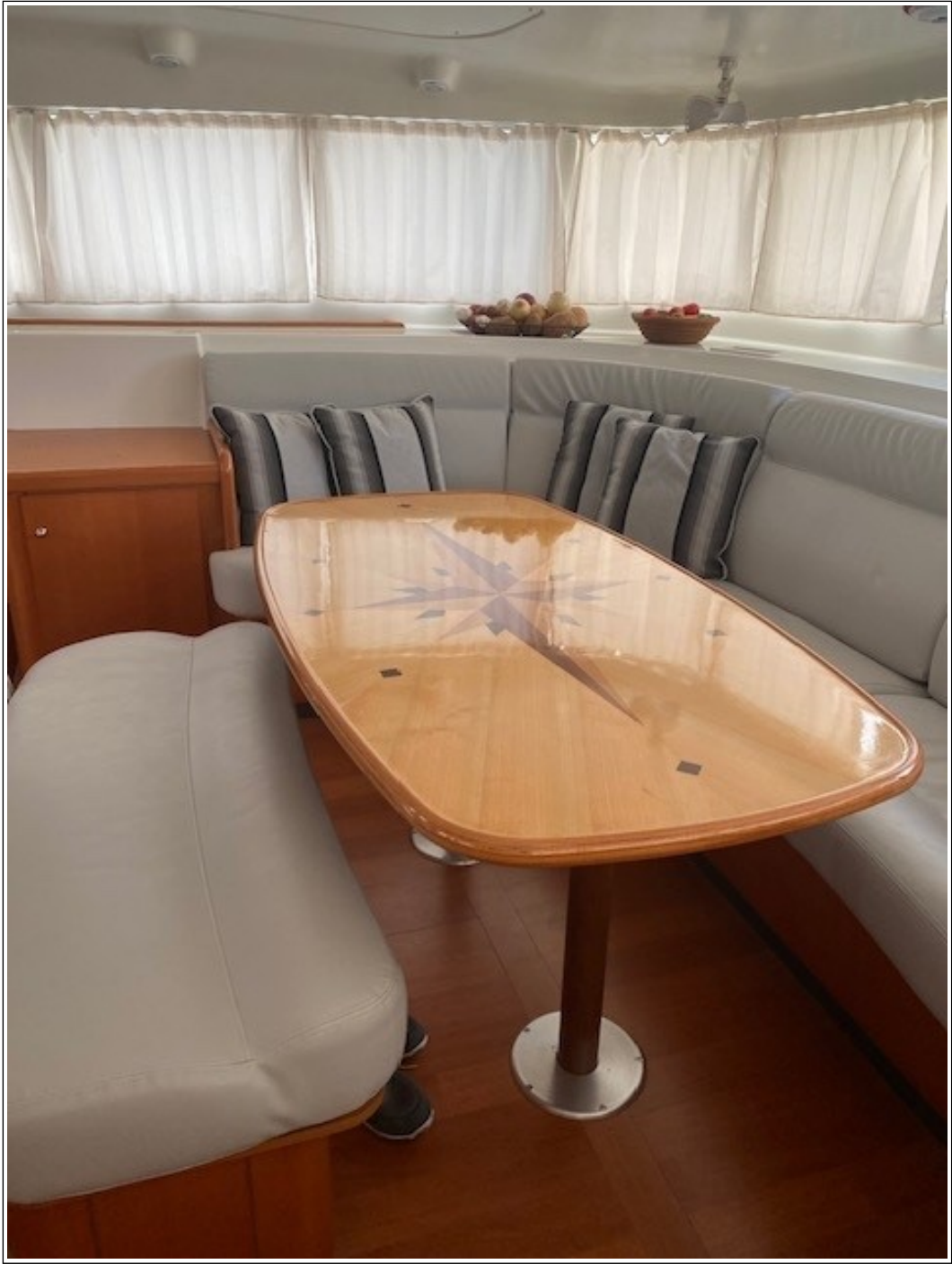






























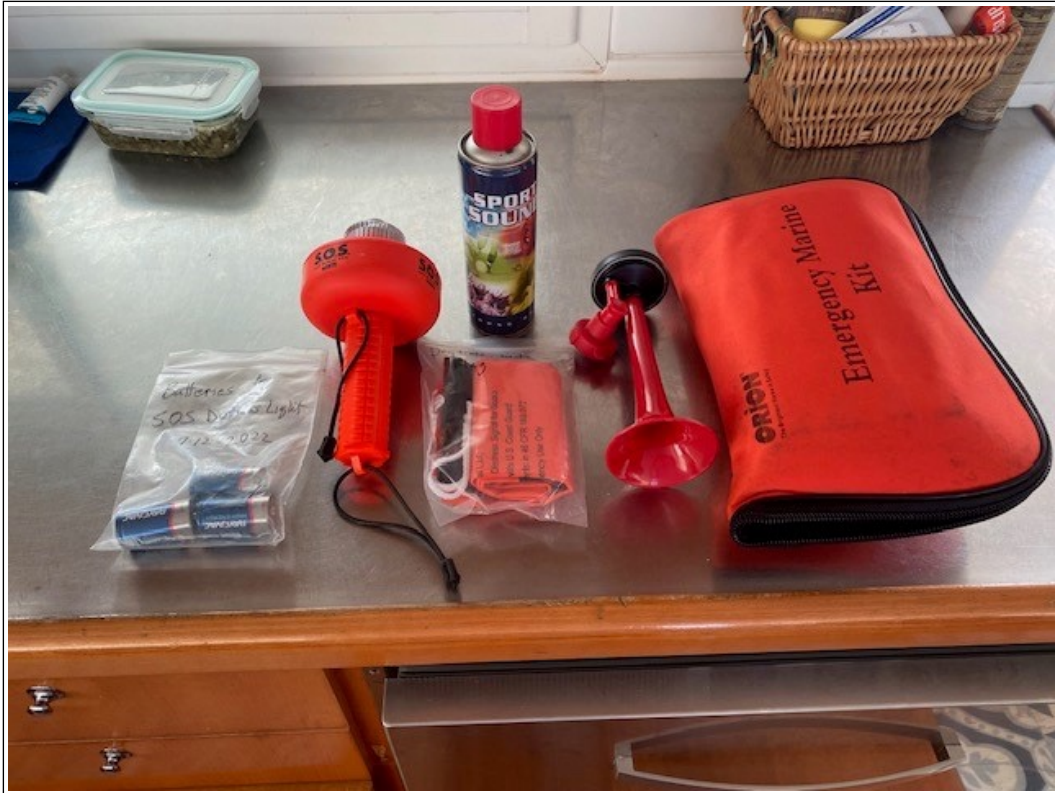














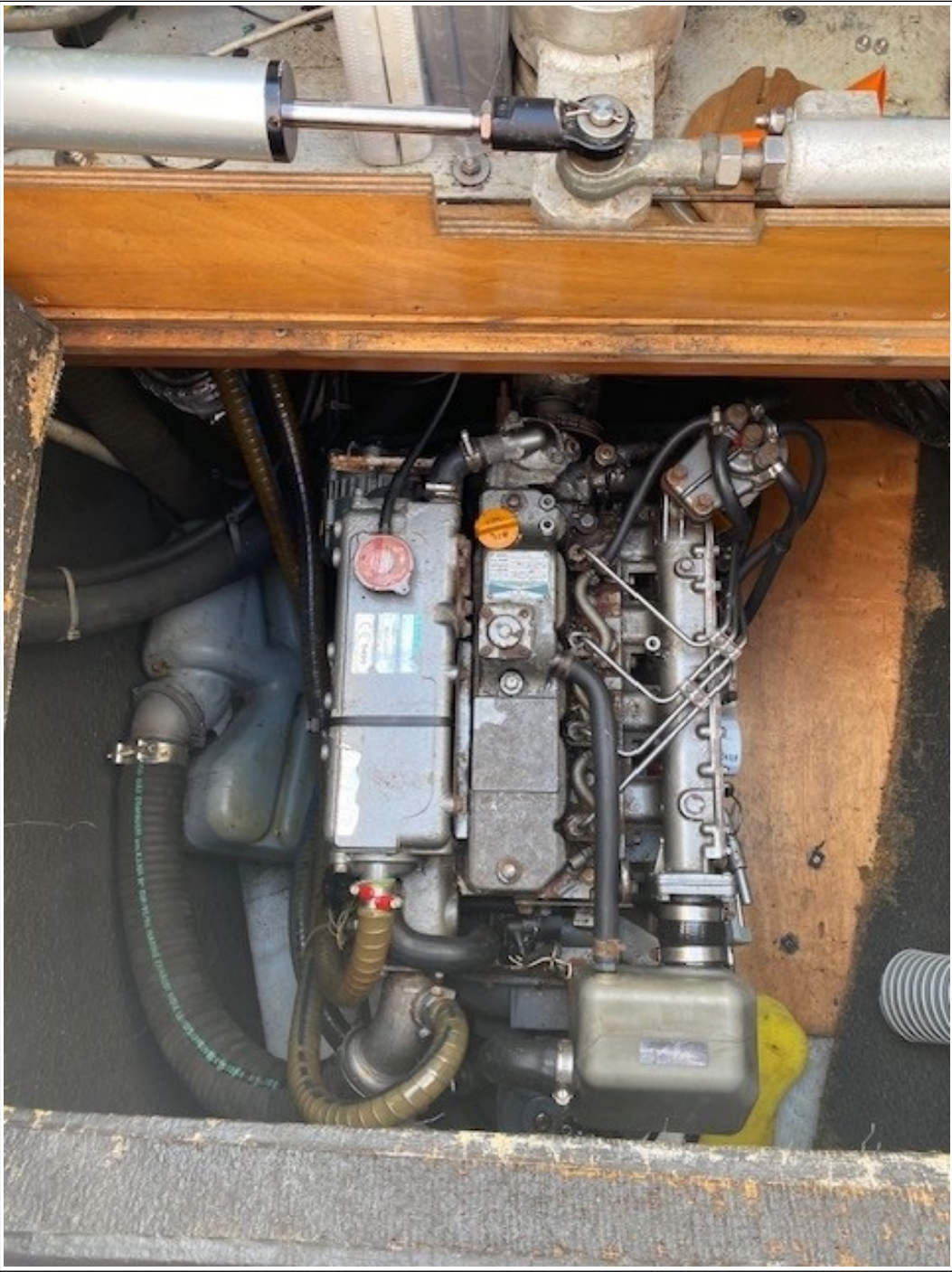


















PRODUCT NUMBER
205 - 411280

SERIAL NUMBER
60175858



MODEL NUMBER
SXF7CK/2 - 417A - RMT

SHOP ORDER
0633396

CAP. (BTU) 7000
VOLTAGE/HERTZ 220-240/50
PH 1
MAX. FUSE 10
MIN. FUSE 8
FLA. COOL 3.63
FLA. HEAT 4.43

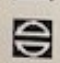
FAN 0.83
L.R.A. 20.0
REFRIG. ---OZ/GRAMS 417A
OIL 10/284
MO
DIAGRAM C0010001
U.S.A. PATENT(S) 5,848,536

ELEC. DATA ABOVE BASED ON 220V/50HZ
SMX CONTROL; 417A REFRIGERANT
REMOTE MOUNT ELEC BOX
REVERSE CYCLE

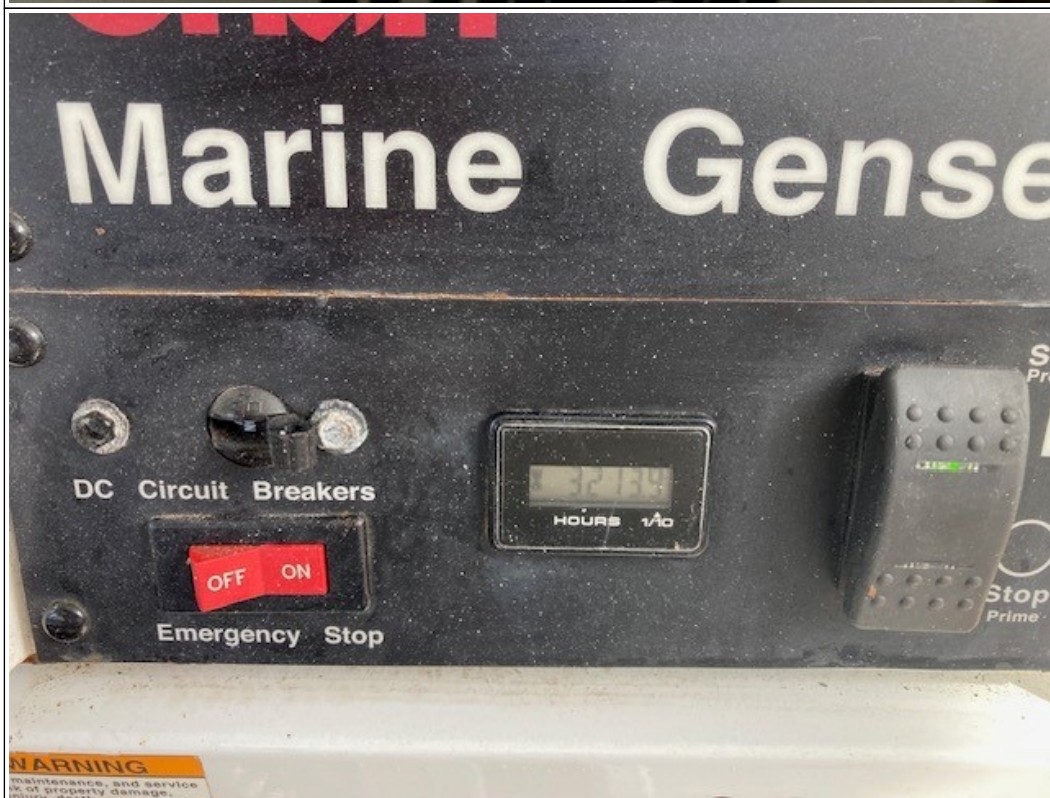
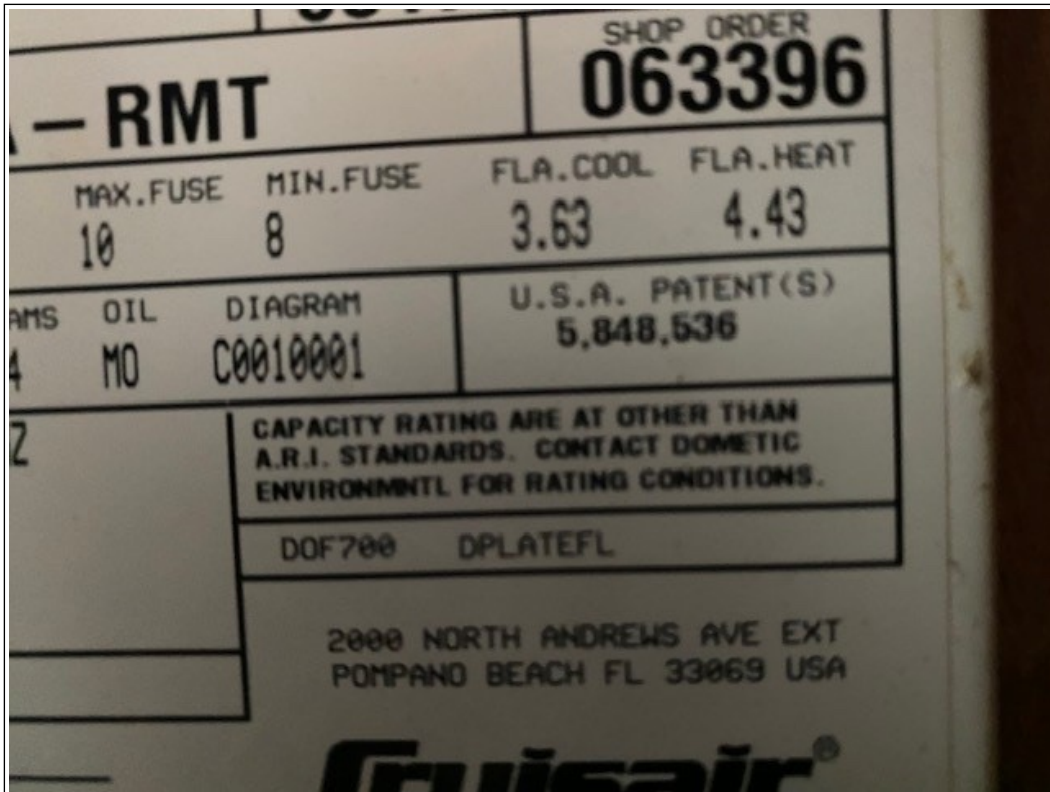
FILTER INSTALLED

DOF700 DPLATEFL

2000 NORTH ANDREWS AVE EXT
POMPANO BEACH FL 33069 USA

 **Dometic** The Sign of Comfort

Truisair[®]



Disclaimer

The Company offers the details of this vessel in good faith but cannot guarantee or warrant the accuracy of this information nor warrant the condition of the vessel. A buyer should instruct his agents, or his surveyors to investigate such details as the buyer desired validated. This vessel is offered subject to prior sale, price change, or withdrawal without notice. Photos may not properly reflect the current condition of the actual vessel offered for sale. In some cases stock photographs may have been used.

Mechanical Disclaimer

Engine and generator hours are as of the date of the original listing and are a representation of what the listing broker is told by the owner and/or actual reading of the engine hour meters. The broker cannot guarantee the true hours. It is the responsibility of the purchaser and/or his agent to verify engine hours, warranties implied or otherwise and major overhauls as well as all other representations noted on the listing.

Dinghy Disclaimer

All dinghies are considered separate vessels and should have separate titles and documents. There is no guarantee as to the title of the dinghy on this vessel so Buyer accepts that while he may receive the dinghy included in the transaction, he may not receive the proper title to it.