

2018 FP MY 37 HAUMEA



Basic Vessel Summary

Manufacturer:	FOUNTAIN PAJOT
Model:	FP MY 37
Model Year:	2018
Year Built:	2017
Type of Yacht:	Power
Price:	\$399,000
Condition:	Used
Status:	Sold
Location	Stuart Florida (FL)
Manuf. Length:	36' (10.97 m)
Maximum Draft:	2' (.61 m)
Beam:	16' (4.88 m)
No. of Cabins:	3
No. of Heads:	2
Electric Circuit:	110 volt
Fuel Capacity:	316 g
Water Capacity:	93 g
Max speed:	12
Weight - Displacement:	8.9 ton (17800 lb)
Hull Material:	Fiberglass
Hull Configuration:	Catamaran
Engine Manufacturer	YANMAR
Engine Model	4JH110
Engine Year	2016 / 2018
Engine Horsepower	110

Engine Hours (Port)	3656
Engine Hours (Starboard)	1936
Engine Type	Inboard
Engine Configuration	Twin
Engine Fuel Type	Diesel
Engine Condition	Used
Does the boat have a generator?	Yes
Generator Model	Fisher Panda
Generator Operating Hours	2885
Generator Horsepower	7.5 Kva
Does a dinghy come with the boat?	Yes
Dinghy Model	OXEAN
Dinghy Length	10 ft
Dinghy Model Year	2020
Dinghy Outboard Manufacturer	Tohatsu
Dinghy Outboard Horsepower	9.8
Dinghy Outboard Year	2020

Full Specification

[Layout & Accommodations](#)

Port hull : Owner's suite

Sleeping area

Double bed 1.60 x 2.00 approx.

Storage under bed

Wide fixed hull bay

Ventilation via hull portholes and deck hatch

General lighting LED spotlights and 2 bedside reading lights

Blackout curtains for all windows and deck hatches

Large storage cabinet: wardrobe and closet

Laundry area and storage

Access through wooden door from passageway

Storage cupboard with shelving and hanging space can accommodate a washing machine 3 kg

Lining

Neon lighting

Bathroom space

Worktop with sink

Mirror + shell recess
Hot and cold water mixer tap
Separate shower with altuglass screen shower
Electric pump for greywater
shower mixer
W.C. great model manual
Cupboard with internal shelf under worktop
Hooks
Ventilation by 1 deck hatch
Lighting LED waterproof 2 spots

Starboard hull
Aft cabin
Access through wooden door from the passageway (doors with locks)
Double bed 1, 60 x 2, 00 approx.
Hanging
Storage under bed
Wide fixed hull bay
Ventilation via hull portholes
General lighting LED spotlights and 2 bedside reading lights
Blackout curtains for all windows and deck hatches

Bathroom area (common to 2 cabins)
Common access via the passageway through wooden door
Worktop with integrated sink and mirror
Shower with hot and cold water mixer
W.C. great model manual
Bathroom accessories (toilet paper holder + towel)
Ventilation by 1 deck hatch
Lighting waterproof LED spots

Passageway
Cupboard

Forward cabin
Access through wooden door from the passageway
1 double bed (1, 40 / 1, 00 x 2, 00 m)
Hanging
Storage under the bed
Wide fixed hull bay
Ventilation via portholes lined

General lighting LED spotlights and 2 bedside reading lights

Ventilation by deck

Blackout curtains for windows and deck hatch

Galley

Galley area

Galley with working top

1 bin with vertical access

1 bowl sinks

Hot and cold pressurized water, mixer tap

1 stainless steel hob, 2 strong power gas burners

7 ° - 150L cold storage volume 12V

Cupboard + shelves + drawers

Ventilation via 1 porthole above cooking hob

LED light spots

Dining area

1 bench seating for 6 people

1 table for 6 people

Standard upholstery according to "Millésime"

Lighting LED spots

Ventilation by 1 bay window

Deck & Equipment

Cockpit

Area : 13.5m²

3-seater bench with backrest and storage compartment

Stairs to the flying bridge

Large storage compartment under floor

Access to back beaches

Lighting waterproof spots

Flying Bridge

Area : 12 m²

Access by stairs

1 bench seating for 6 people

1 helmsman seat with backrest covers silvertex

Wide instrument console

Protective cover of the instrument console

Protection of the fly bridge by windshield altuglass

Fly bridge Enclosure is brand new in original package
1 compass
Navigation lights
Mooring light spar mounted and white beam headlight
1 bracket flag

Electronics & Navigation

Electronic Pack Garmin 1: autopilot, VHF, AIS, Garmin 7410, multi GMI20
12" Screen GPS Chart Plotter (Helm Station / Flybridge)
Video Pack / HIFI
TV/ Radio Antenna
HD Television

Electrical, Power & Plumbing

110V / 60 HZ main grid
110V Water Heater
Additional electric freshwater pump
Pressurized seawater galley+ outlet
Additional AGM Battery 115 A Supply
2000W inverter/charger / 110V / 60 HZ
Generator 7.5 Kva - 110V / 60 HZ – 2885 hrs
A/C is updated in 2021 to 48000 BTU (3 A/C with 16000 BTU each 110V)
Air conditioning in all cabins

Engine & Mechanical

2 x Yanmar 110 HP Port-3656 hrs/Starboard-1936 hrs
Starboard engine replaced 2021

Image Gallery

























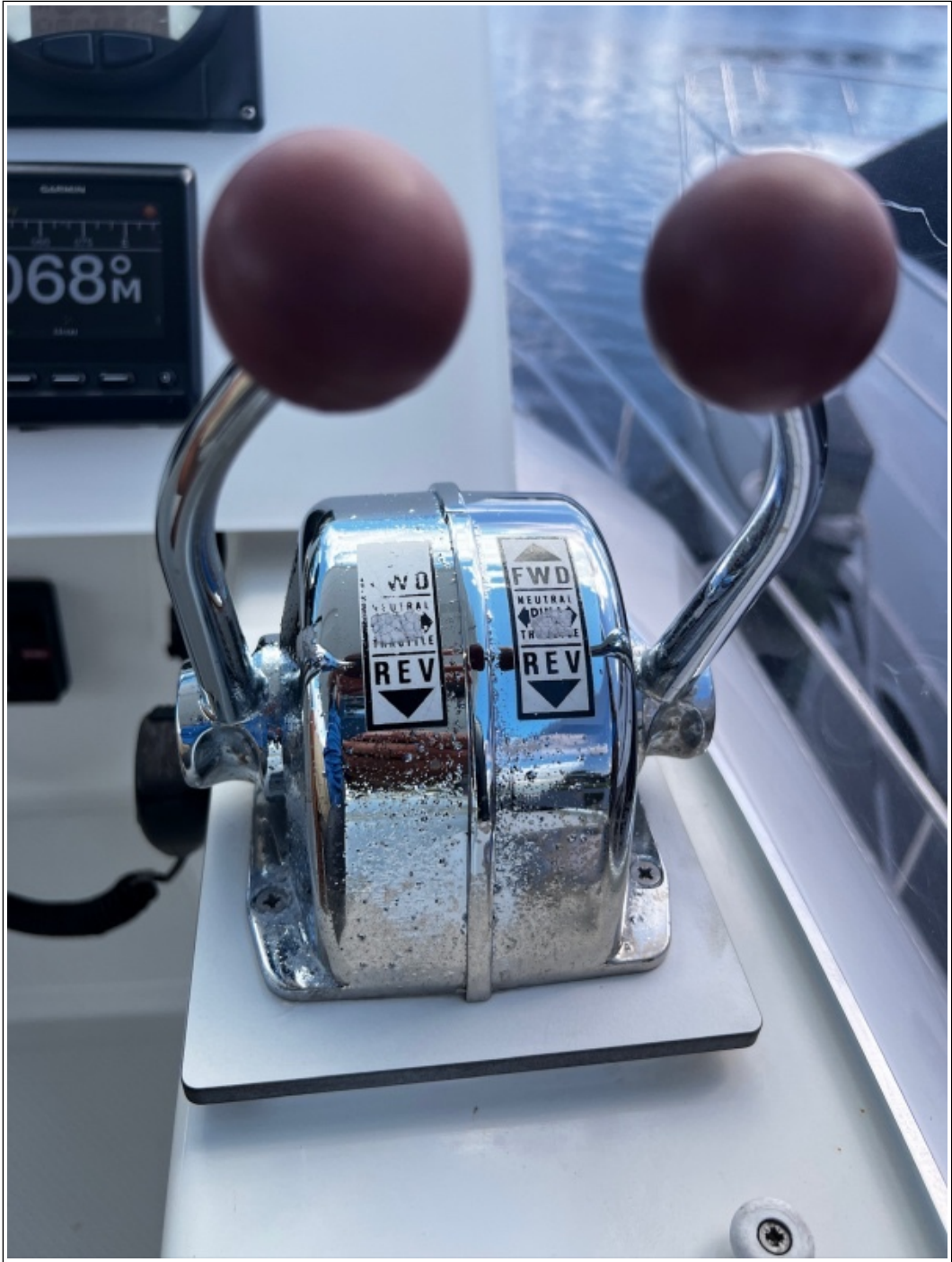


























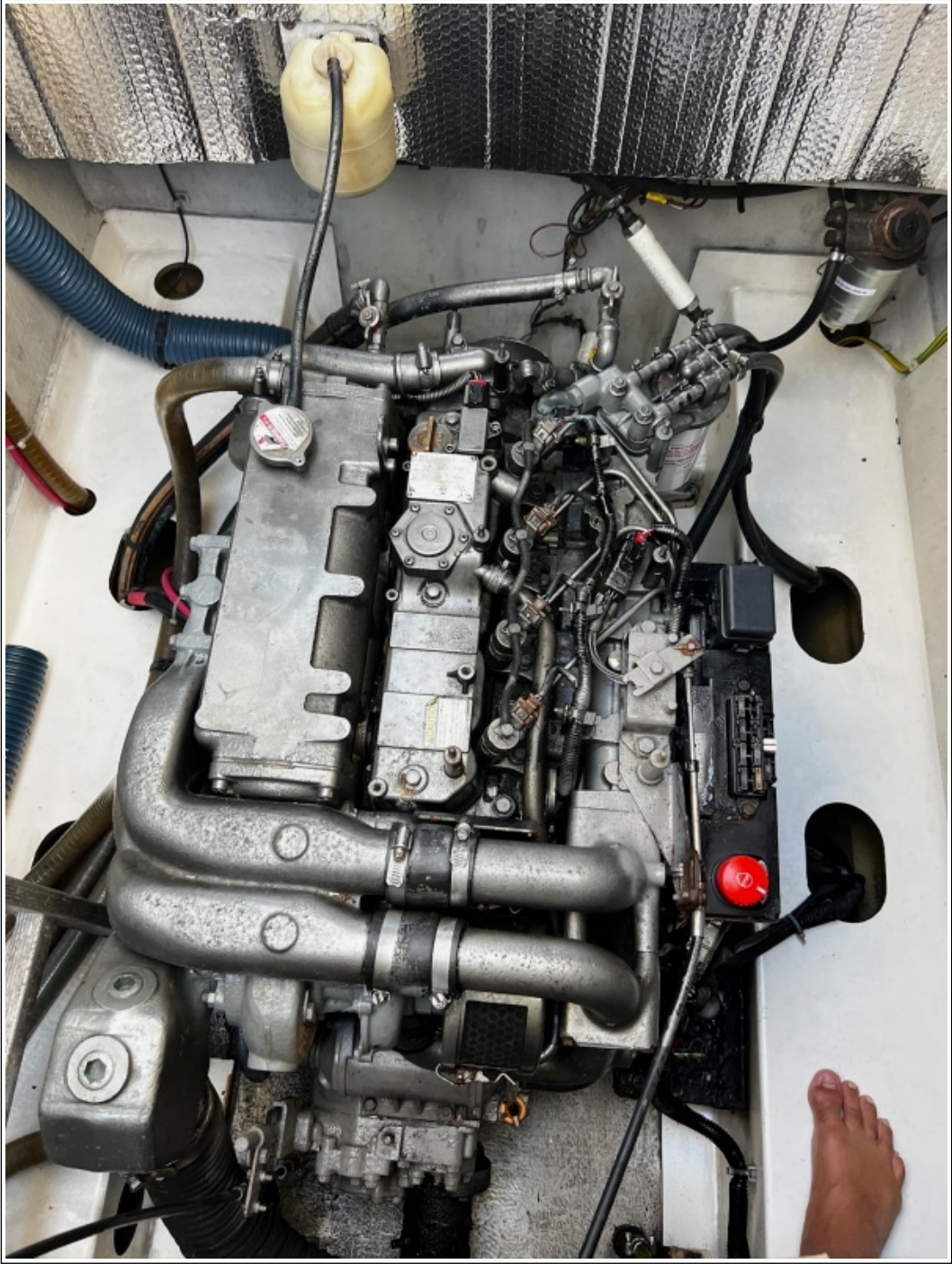












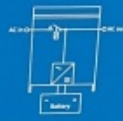


www.victronenergy.com



- inverter
- charger
- alarm

on
off
charger only



- battery charger
- sinewave inverter
- transfer switch

- powerassist
- parallel connectable
- three phase connectable

MultiPlus Compact

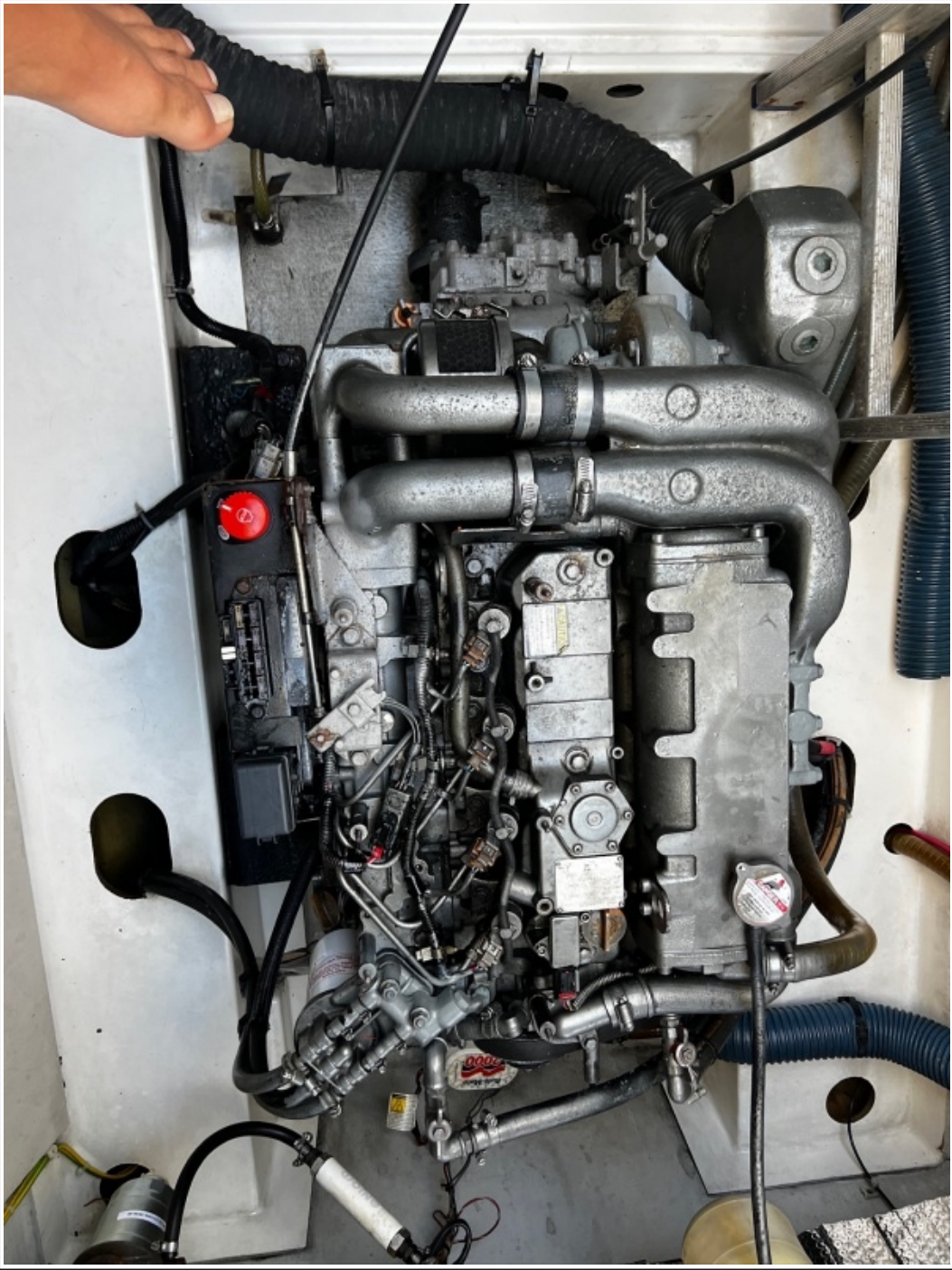
12 | 2000 | 801

AC Transfer capacity: 1x 50A | Inverter 120 V

Before charging read the instructions. For indoor use only. Disconnect the supply before making or breaking the connections to the battery. **WARNING** - Risk of electric shock. Use only the ground-fault circuit-interrupter or circuit breaker specified in the installation and operating instructions manual supplied with this unit. Other types may not operate properly when connected to this unit. -Explosive gases, prevent fumes and sparks, provide adequate ventilation during charging. **DANGER** - To reduce the risk of explosion, do not install in machinery space or area in which ignition protected equipment is required. **CAUTION** - To reduce the risk of electric shock - Do not expose to rain or spray. - To prevent fire, do not cover or obstruct ventilation openings. Do not mount in zero-clearance compartment. Overheating may result.



Intended for continuous duty. Charge VRLA or Li-Ion batteries only. Number of lead-acid battery cells: 6. Provided with integral protection against overloads.



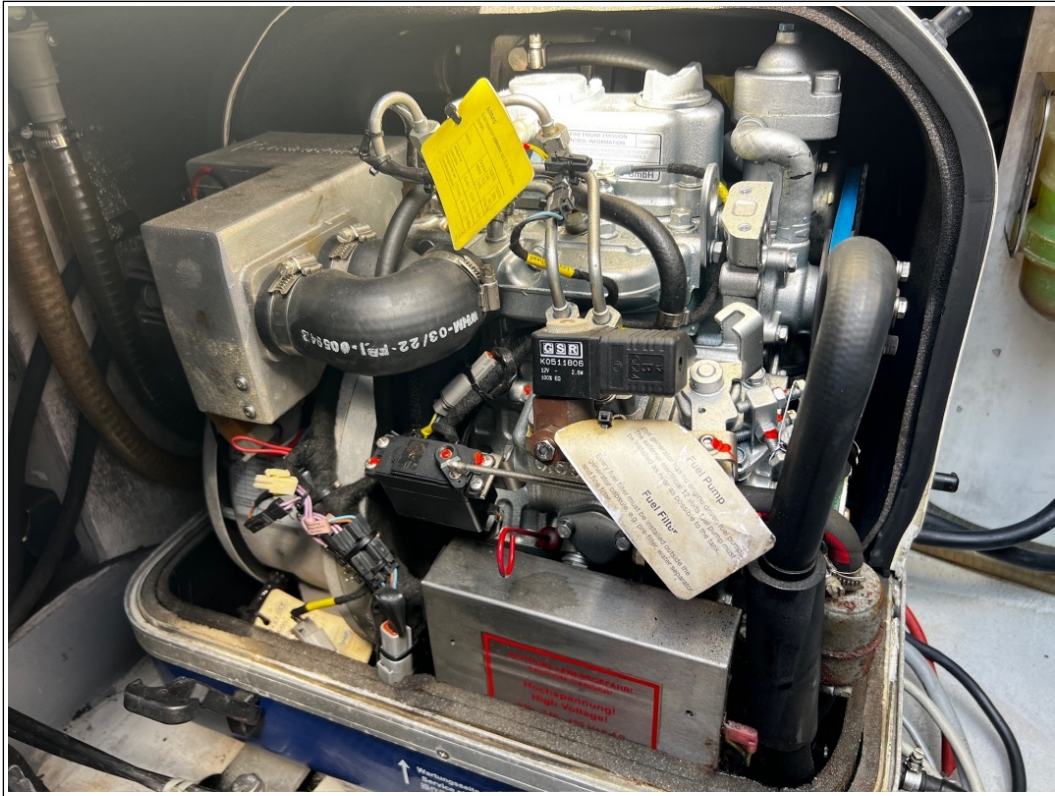


































































Disclaimer

The Company offers the details of this vessel in good faith but cannot guarantee or warrant the accuracy of this information nor warrant the condition of the vessel. A buyer should instruct his agents, or his surveyors to investigate such details as the buyer desired validated. This vessel is offered subject to prior sale, price change, or withdrawal without notice. Photos may not properly reflect the current condition of the actual vessel offered for sale. In some cases stock photographs may have been used.

Mechanical Disclaimer

Engine and generator hours are as of the date of the original listing and are a representation of what the listing broker is told by the owner and/or actual reading of the engine hour meters. The broker cannot guarantee the true hours. It is the responsibility of the purchaser and/or his agent to verify engine hours, warranties implied or otherwise and major overhauls as well as all other representations noted on the listing.

Dinghy Disclaimer

All dinghies are considered separate vessels and should have separate titles and documents. There is no guarantee as to the title of the dinghy on this vessel so Buyer accepts that while he may receive the dinghy included in the transaction, he may not receive the proper title to it.

