

## 2023 FP Elba 45 SEA THE WORLD



### Basic Vessel Summary

<b>Manufacturer:</b>	FOUNTAINE PAJOT
<b>Model:</b>	FP Elba 45
<b>Model Year:</b>	2023
<b>Year Built:</b>	2023
<b>Type of Yacht:</b>	Sail
<b>Price:</b>	\$899,000
<b>Condition:</b>	Used
<b>Status:</b>	Sold
<b>Location</b>	Tortola Virgin Islands (British)
<b>Manuf. Length:</b>	44' 13" ( 13.74 m)
<b>Maximum Draft:</b>	3' 11" ( 1.19 m)
<b>Beam:</b>	24' 9" ( 7.54 m)
<b>LWL:</b>	44' 3" ( 13.49 m)
<b>No. of Cabins:</b>	3
<b>No. of Heads:</b>	3

<b>Electric Circuit:</b>	110 volt
<b>Fuel Capacity:</b>	125 g
<b>Water Capacity:</b>	185 g
<b>Weight - Displacement:</b>	14.021 ton (28,042 lb)
<b>Hull Material:</b>	Fiberglass
<b>Hull Configuration:</b>	Catamaran
<b>Engine Manufacturer</b>	VOLVO
<b>Engine Model</b>	PENTA
<b>Engine Year</b>	2023
<b>Engine Horsepower</b>	50
<b>Engine Hours (Port)</b>	566
<b>Engine Hours (Starboard)</b>	514
<b>Engine Type</b>	Inboard
<b>Engine Configuration</b>	Twin
<b>Engine Fuel Type</b>	Diesel
<b>Engine Condition</b>	Used
<b>Does the boat have a generator?</b>	Yes
<b>Does a dinghy come with the boat?</b>	No

### [Boat Description:](#)

Fountaine Pajot Elba 45 – Exceptional Performance Meets Unmatched Comfort

The 2019 Fountaine Pajot Elba 45, designed by Olivier Racoupeau, is a 45-foot sailing catamaran that masterfully combines high-performance sailing, luxurious comfort, and effortless handling.

With a 13.45 m waterline length and a 7.55 m beam, the Elba 45 delivers remarkable stability, impressive speed, and expansive living spaces—perfect for solo sailors, families, or extended cruising adventures.

This catamaran features modern design, intelligent ergonomics, and exceptional craftsmanship, reflecting Fountaine Pajot's commitment to innovation and excellence. Ready to sail immediately, the Elba 45 promises memorable journeys and unmatched onboard comfort, making it an ideal choice for both performance-minded sailors and those seeking a luxurious escape on the water.

## Full Specification

## Layout & Accommodations

Curtains in cabins  
Beige/Gris PVC outdoor upholstery  
Nature or Muscade PVC indoor upholstery  
Combination locking safe  
Saloon curtains  
Toilet in port forepeak  
Fitting out starbord forepeak  
Handrail on Staircase  
Saloon table convertible into bed  
1 Electric head large bowl

## Galley

12V 130L Fridge (Incompatible with OPT0623010)  
Cockpit fridge  
220V Microwave oven (Req. Version OCE/CFT)

## Deck & Equipment

2 bow seats  
Deck shower (hot water)  
Bimini for helm station  
Enclosure for bimini helm station  
Outdoor foredeck cushions  
Lounge deck sun awning  
Protective strip on both transoms  
2nd swim ladder  
Synthetic teak floor transoms and cockpit x2  
Chain + 25KG Anchor

## Electronics & Navigation

VHF mast head antenna prewired  
Fusion audio pack Bluetooth 4 Sp.  
GARMIN 2 Smart Cruising : Autopilot, VHF, AIS, 2\*GPS 8410, 2\*multi GMI20  
GARMIN autopilot remote  
WIFI amplifier  
PROFURL genoa furler  
Add. windlass control chain counter  
Electric platform (maximum load 150kg)  
Antifouling, primary epoxy

## Electrical, Power & Plumbing

Electrical windlass (1500 Watts)  
Interior 12V outlet and waterproof exterior 12V outlet  
Interior courtesy LED lighting  
Pressurized seawater system  
Additional electric freshwater pump  
Underwater lighting 2x21 W  
Additional electric freshwater pump  
Additional AGM battery 150A  
Additional Interior 12V outlet  
Solar panels 4X90/100 W  
Watermaker 12V 60L/h at low consumption  
110V Water heater (Req. Version OCE/CFT)  
US Standard Gas Installation  
11KW 110V/60HZ genset (Req. Version OCE/CFT)

## Engine & Mechanical

2 VOLVO 60HP D2 engines  
Air cond. 110V 60HZ main syst. 56K BTU (Req.OPT0625630)  
Second VHF (Req. Garmin Pack 1, 2 or 3)  
VHF US channels (Req. Garmin Pack 1, 2 or 3)

## Sails & Rigging

CST mainsail full batten  
Automatic mainsail Hook  
Lazy jack  
Quadruple clutche for reefs 1,2 and 3 + toping lift  
Lazy bag  
1 Electric winch for mainsail

## Additional Information

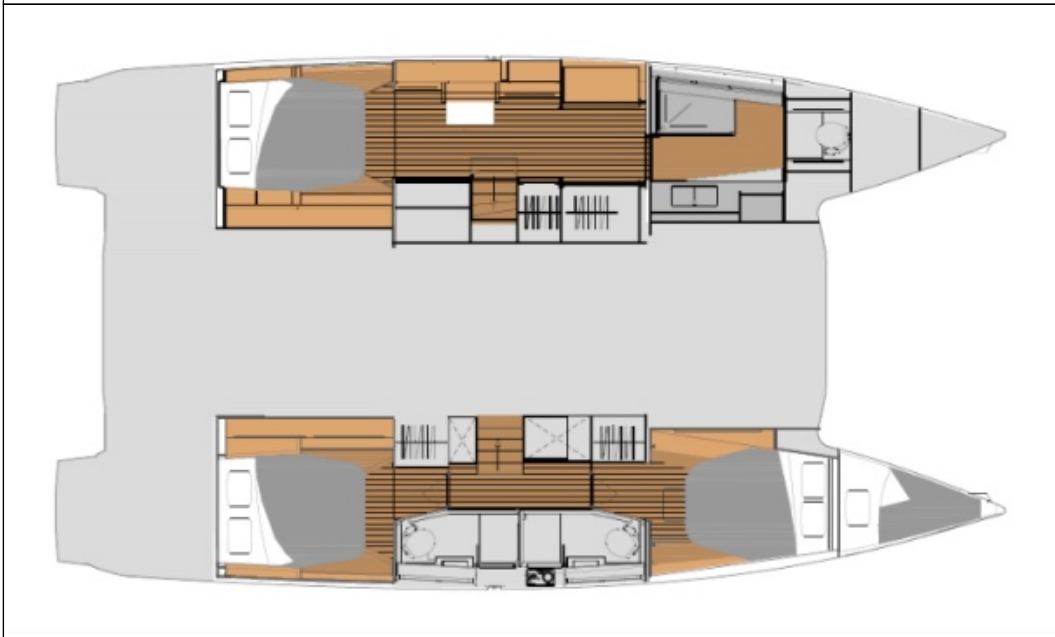
Mooring kit + 6 fenders  
Auto. switch for bilge pumps  
Dralon protective cover for wheel  
TV/radio antenna  
Upgrade Bose  
12V fan x6  
Minimum safety kit  
MP10 container life raft



Image Gallery



































EN NAVIGATION SOUS VOILES  
METTRE LES LEVIERS DE  
COMMANDE AU POINT MORT

IN NAVIGATION UNDER SAILS  
PUT CONTROL LEVERS IN THE  
NEUTRAL

MOTEUR BASSIN  
PORT ENGINE

STOP  
START  
STOP  
START

GARMIN

STOP

COUPER LE CONTACT  
APRES ARRÊT DU MOTEUR

STOP



































Starboard



Starboard



Starboard























### **Disclaimer**

The Company offers the details of this vessel in good faith but cannot guarantee or warrant the accuracy of this information nor warrant the condition of the vessel. A buyer should instruct his agents, or his surveyors to investigate such details as the buyer desired validated. This vessel is offered subject to prior sale, price change, or withdrawal without notice. Photos may not properly reflect the current condition of the actual vessel offered for sale. In some cases stock photographs may have been used.

### **Mechanical Disclaimer**

Engine and generator hours are as of the date of the original listing and are a representation of what the listing broker is told by the owner and/or actual reading of the engine hour meters. The broker cannot guarantee the true hours. It is the responsibility of the purchaser and/or his agent to verify engine hours, warranties implied or otherwise and major overhauls as well as all other representations noted on the listing.

### **Dinghy Disclaimer**

All dinghies are considered separate vessels and should have separate titles and documents. There is no guarantee as to the title of the dinghy on this vessel so Buyer accepts that while he may receive the dinghy included in the transaction, he may not receive the proper title to it.