

2015 Lagoon 52 MATILDA MIA



Basic Vessel Summary

Manufacturer:	LAGOON
Model:	Lagoon 52
Model Year:	2015
Year Built:	2015
Type of Yacht:	Sail
Price:	\$674,000
Condition:	Used
Status:	Catamaran for Sale
Location	Isla Solarte Panama
Manuf. Length:	52' (15.85 m)
Maximum Draft:	3' (.91 m)
Beam:	30' (9.14 m)
No. of Cabins:	5
No. of Heads:	5
Electric Circuit:	220 volt

Fuel Capacity:	262 g
Water Capacity:	198 g
Weight - Displacement:	29.762 ton (59524 lb)
Hull Material:	Fiberglass Reinforced Plastic- FRP
Hull Configuration:	Catamaran
Engine Manufacturer	YANMAR
Engine Model	4JH80-C
Engine Year	2019
Engine Horsepower	80
Engine Hours (Port)	2000
Engine Hours (Starboard)	2100
Engine Type	Inboard
Engine Configuration	Twin
Engine Fuel Type	Diesel
Engine Condition	Used
Does the boat have a generator?	Yes
Generator Model	Onan
Generator Operating Hours	6500
Generator Horsepower	17.5 Kw
Does a dinghy come with the boat?	No

Boat Description:

Introducing MATILDA MIA, a 2015 Lagoon 52F, a luxurious, high-performance catamaran that's ready for global adventures.

After 6.5 years of cruising from the Mediterranean to the Caribbean and beyond, this boat has proven itself as both a reliable passage-maker and a comfortable home.

With a comprehensive 2019 refit, including new 4JH80-C engines, SD60 sail drives, a 2020 Sparcraft mast, and an upgraded Raymarine electronics suite, MATILDA MIA offers modern, dependable sailing. The spacious five-cabin layout is ideal for family cruising or charters.

Equipped with a self-sufficient power system, including 3075 watts of solar panels, 1400 amp hours of lithium batteries, and a Rainman water maker, MATILDA MIA is built for off-grid, long-distance voyages.

Currently registered in Australia, it's fully ready for a U.S. buyer or easy transfer to another registry. Meticulously maintained, MATILDA MIA is the perfect vessel for anyone seeking comfort, performance, and reliability. Ready to sail wherever your next adventure awaits.

Full Specification

Layout & Accommodations

Layout: 4 Queen cabins + 1 double Bunk

5 electric toilets starboard Dometic 2015 5 separate showers

Headroom: 6 ft 3

Hot Water Capacity: 1 x 60L

Water Capacity: 3 x 250 litres = 750 litres

Galley

Galley Location: port side inside saloon with direct communication to cockpit

Refrigeration: 1 fridge 120L 12v front opening, + 1 fridge 140L 220v front opening with freezer. 1 Freezer 130L front opening 12v + 1 Freezer 90L top opening 220v.

Stove: ENO 4 gas hobs

Sink: One stainless steel sink.

Washing Machine: Samsung 8kg 2019

Deck & Equipment

Anchor: Rocna 55kg (2019)

Chain: 90m chain 12mm (2019)

Windlass: Lemar 1500W (2015) full service 2024

Davits: yes

Swim Ladder: yes

Deck Shower: yes

Cockpit Cushions: yes 2020

Bimini 2019 side and rear shades 2020

Electronics & Navigation

Depth Sounder Raymarine i70s 2019

Log Raymarine i70s 2019

Autopilot Raymarine ACU 400 2019

Wind Instruments: Raymarine i70s 2019 x 2 Radar: Raymarine HD 2019

Chartplotter: Raymarine Hybrid Touch e165 + Raymarine Hybrid Touch e127 AIS:
Raymarine (2019)

VHF: ICOM M506 + ICOM M502

Furuno Navtex receiver NX300 (2019)

Stereo: 8 speakers (2019)

Radio: Fusion stereo with bluetooth (2019)

Electrical, Power & Plumbing

Battery House: Epoch LiFePO4 3 x 460Ah 12V (2024) Battery Engine: 3 x 120 Ah Optima blue top (2022) Battery Charger/Inverter: Victron 120/3000 12v

Watermaker: Rainman 140L per hour 220v Installed 2021

Solar Panels: 3075 W – (2024) with 9 MPPT Victron chargers (2024)

Generator Onan 17.5KW 6500 hrs Serviced 2024

Shore Power 220 V

BMV-712 Shunt battery monitor

Victron Cerbo GX & Victron GX touch 70.

Air Conditioning: 60,000 BTU Dometic Chiller system with soft start + 24,000 BTU Marine Air stand- alone unit in Master Cabin with Soft Start.

Engine & Mechanical

Engine Year: 2019

Engine Make: Yanmar

Engine Model: 4JH80-C

Number of Engines:2

Engine Number:

Engine Hours: Starboard 2100 h, Portside 2000 h

Horsepower: 2 x 80 HP

Fuel Capacity: 1000 litre

Fuel Consumption: 3.3 litre/hour per engine

Fuel Type: Diesel

Maximum Speed: 10 knots

Cruise Speed: 6 knots

Propellers: Fixed Aluminium

Drive Type: Sail drive SD60 2019

Steering System: hydraulic steering Lacombe & Schmidt 2015, all hydraulic hoses 2019

Notes: Engines serviced 2024, sail drives serviced in 2024.

Sails & Rigging

Rig Type: Sloop

Rig Material: Spar craft Aluminium mast stainless steel stays 2020

Condition: All standing and running rigging 2020-2021

Mainsails: full batten square top Incidences Dacron Sail (2020)

Headsails: furling Jib Dacron Incidences 2015

Code 0: Incidences (original still serviceable, heavy fabric) with Selden furler 2021 Bowsprit: yes 2021

Winches: 5 Harken winch, 2 speeds, 3 x electric

Additional Information

Bilge Manual: 3

Bilge Electric: 4

Life Raft Plastimo 2021- 6 PAX

Life Ring: yes

EPIRB: yes 2019

Flares: yes

Fire Extinguisher: 5 x fire extinguisher 2020 Bosuns Chair

Image Gallery









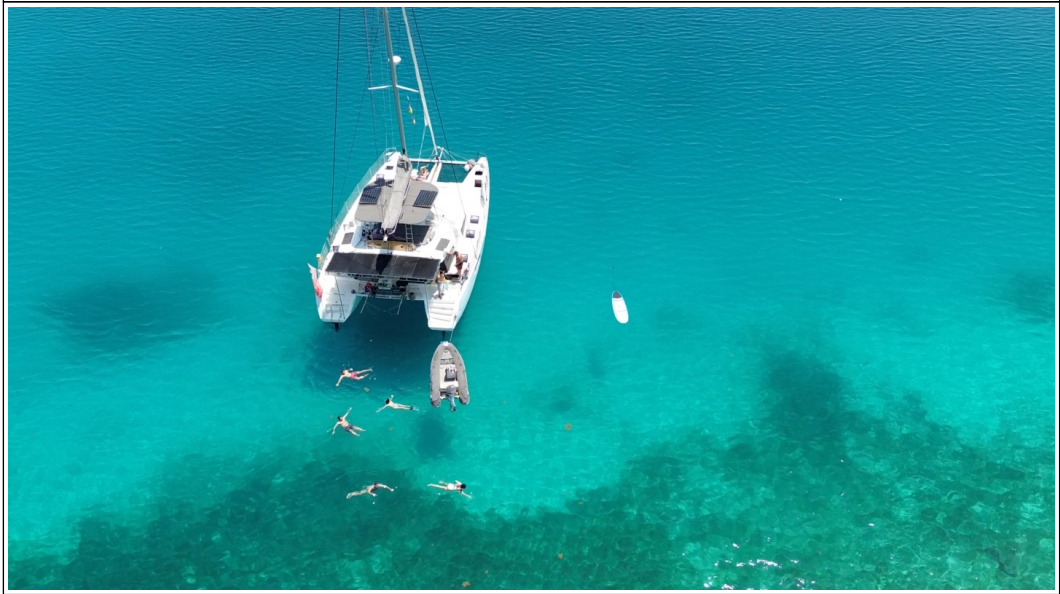


























































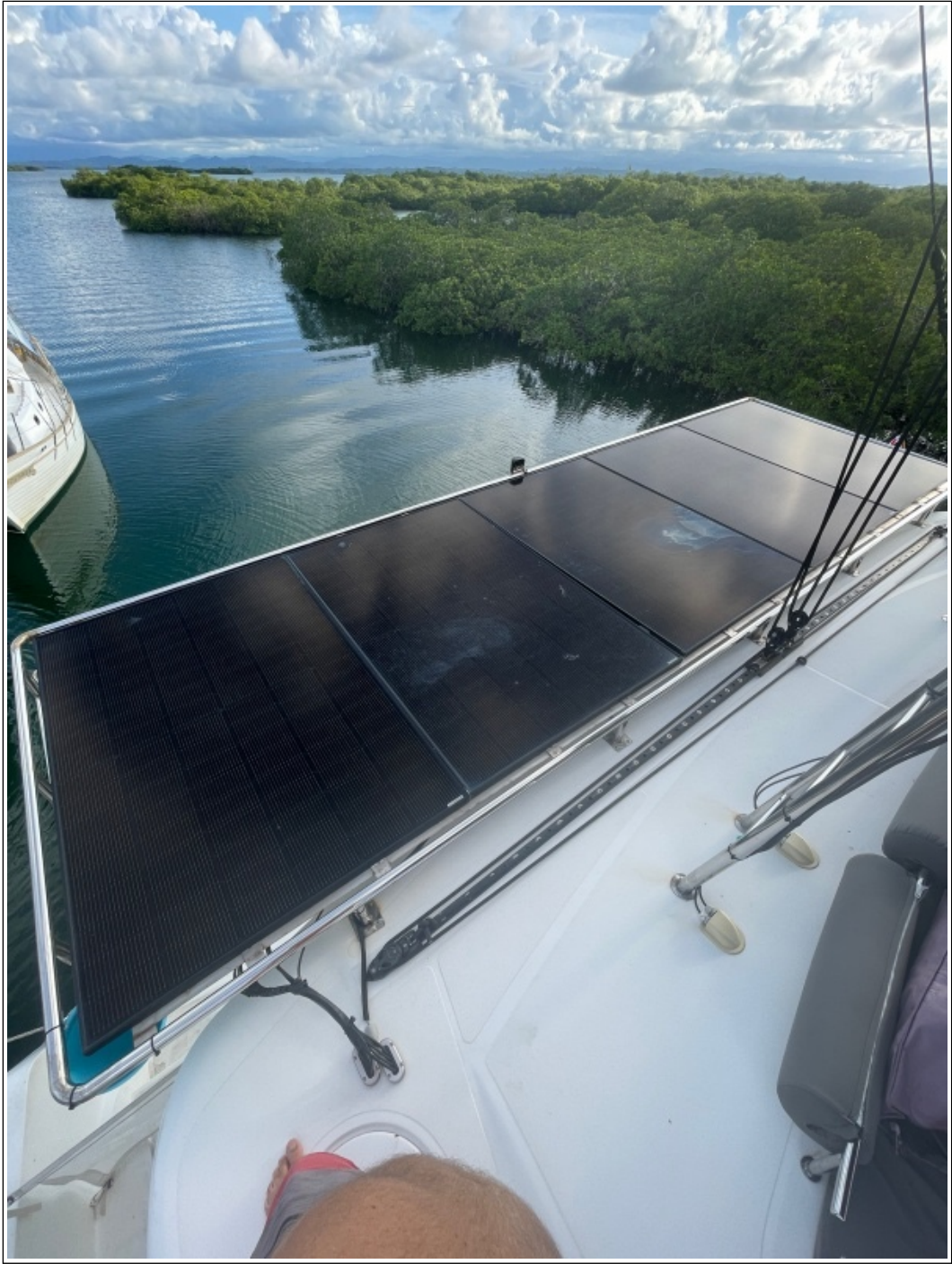


























































Lagoon 52 version 5 cabines - 5 cabins version

















MATILDA MIA

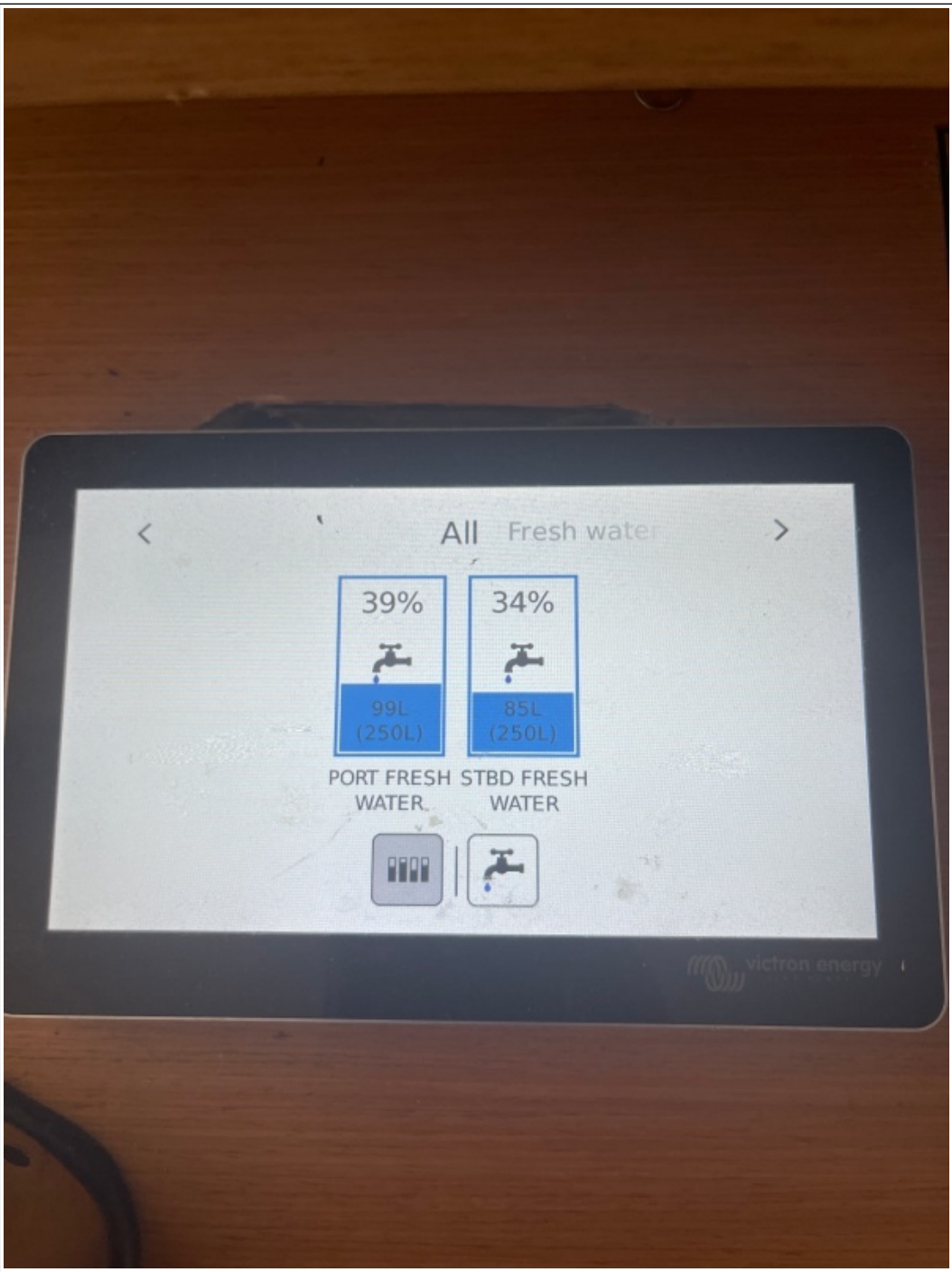
The control panel is mounted on a light-colored wooden surface and is organized into several functional sections:

- Gauges:** Two analog gauges are located at the top left, labeled "PORT" and "STARBOARD".
- Shower Controls:** A central section contains two columns of three switches each, labeled "SHOWER PORT" and "SHOWER STBD". To the right of these are indicators for "FRESH WATER", "TRAYS FRO", and "WASH WASH 1", each with a green LED light.
- Port Bilge:** A section on the right side of the middle row, labeled "PORT BILGE", includes a "PUMP ON" button, a "LEVEL ALARM" indicator (red LED), and a "PUMP OFF" button.
- Port Engine:** A section on the right side of the bottom row, labeled "PORT ENG", includes a "PUMP ON" button, a "LEVEL ALARM" indicator (red LED), and a "PUMP OFF" button.
- Starboard Bilge:** A section on the right side of the middle row, labeled "STBD BILGE", includes a "PUMP ON" button, a "LEVEL ALARM" indicator (red LED), and a "PUMP OFF" button.
- Starboard Engine:** A section on the right side of the bottom row, labeled "STBD ENG", includes a "PUMP ON" button, a "LEVEL ALARM" indicator (red LED), and a "PUMP OFF" button.
- Freezer and Washdown:** The bottom left section contains a large vertical switch labeled "FREEZER" with a green LED indicator, and a "WASHDOWN" section with a "PUMP ON" button, a "LEVEL ALARM" indicator (red LED), and a "PUMP OFF" button.
- Other Indicators:** On the left side of the middle row, there are several indicators with green LEDs: "SHOWDOWN LIGHT", "LIGHT PORT", "LIGHT STBD", "ENGINE LIGHT", and "NAV LIGHTS".









All Fresh water



39%



99L
(250L)

34%



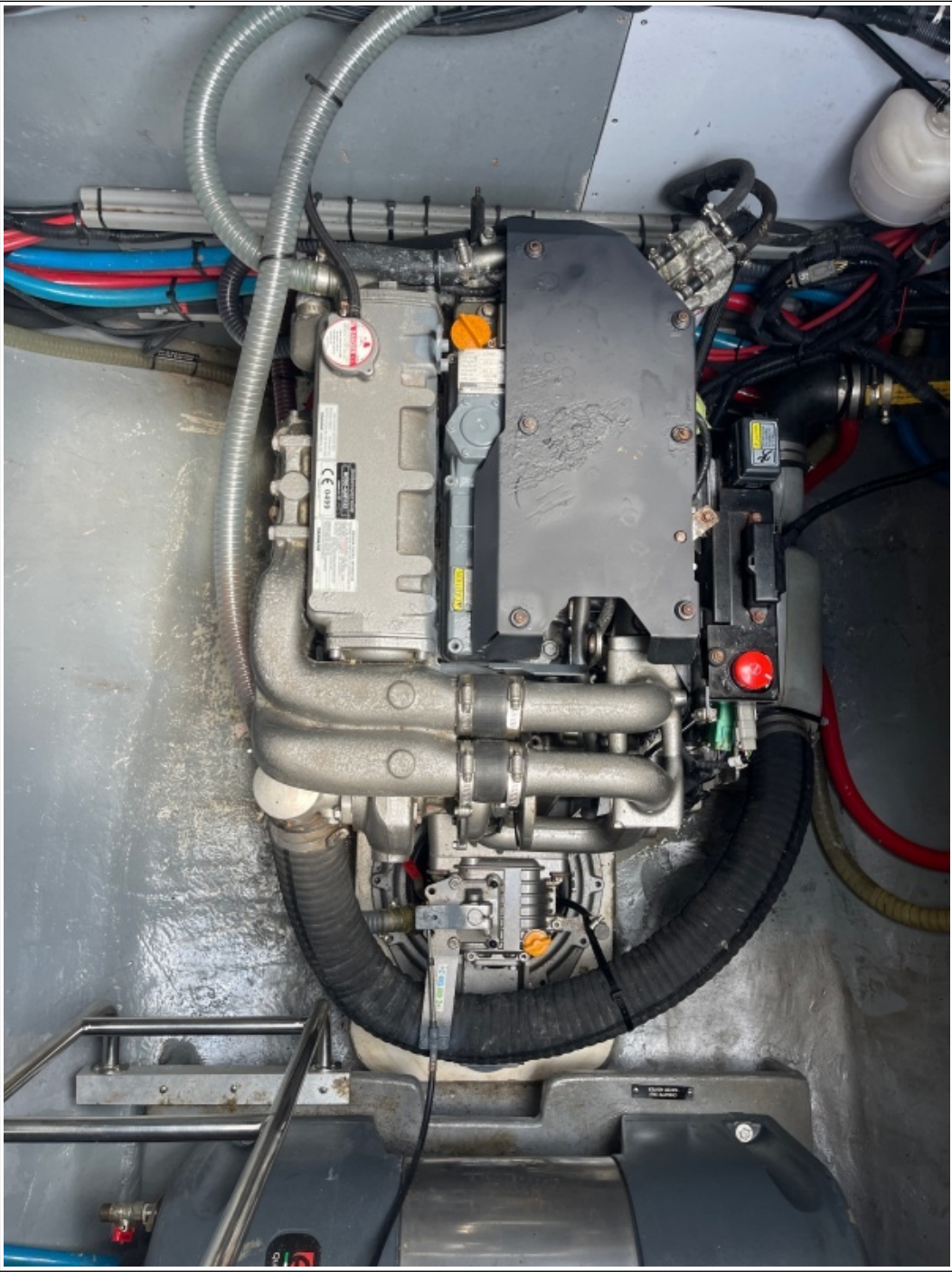
85L
(250L)

PORT FRESH WATER STBD FRESH WATER



victron energy







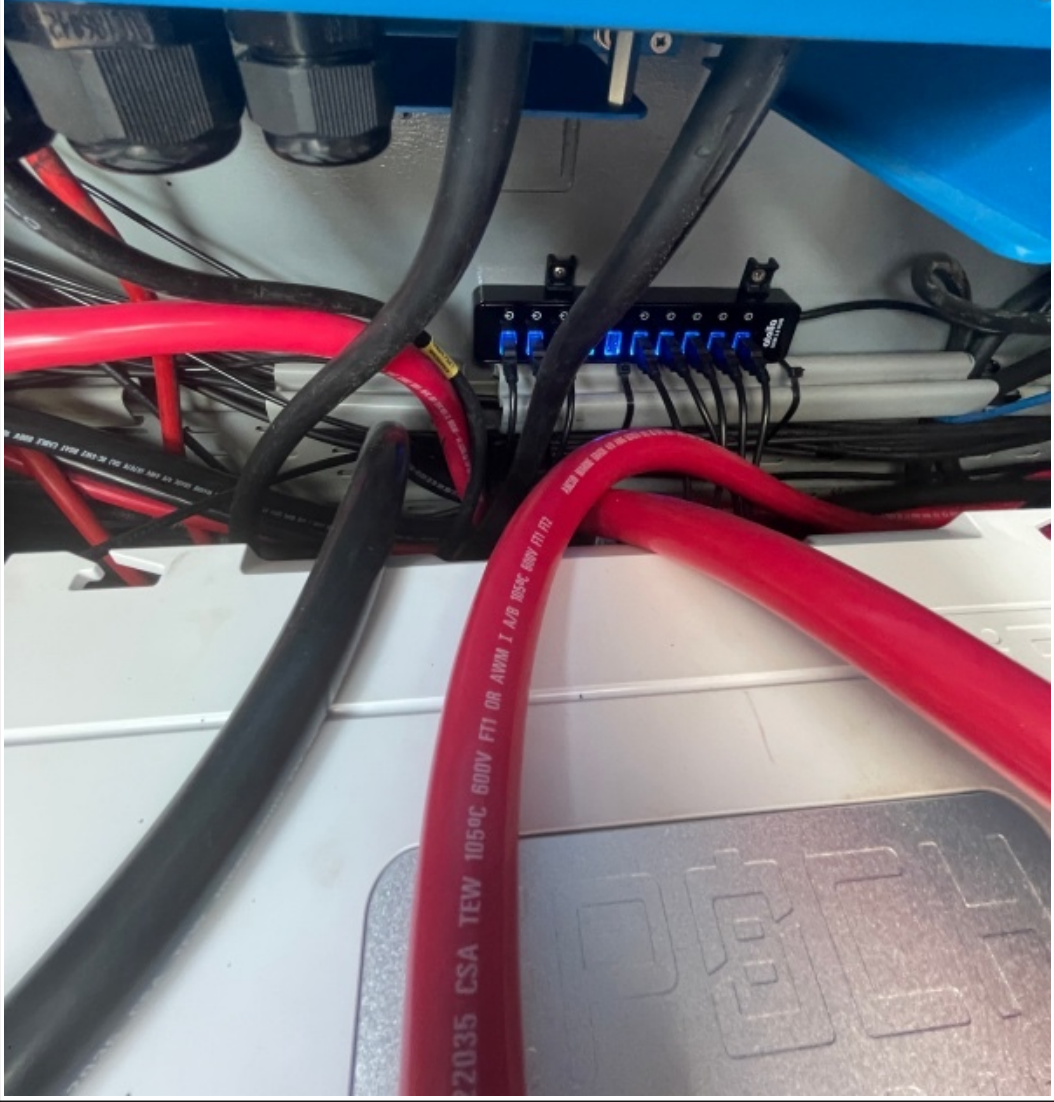








the supply before making or breaking the connections to
WARNING: Explosive gases, prevent flames and sparks,
adequate ventilation during charging. Charge lead-acid
batteries only.







Disclaimer

The Company offers the details of this vessel in good faith but cannot guarantee or warrant the accuracy of this information nor warrant the condition of the vessel. A buyer should instruct his agents, or his surveyors to investigate such details as the buyer desired validated. This vessel is offered subject to prior sale, price change, or withdrawal without notice. Photos may not properly reflect the current condition of the actual vessel offered for sale. In some cases stock photographs may have been used.

Mechanical Disclaimer

Engine and generator hours are as of the date of the original listing and are a representation of what the listing broker is told by the owner and/or actual reading of the engine hour meters. The broker cannot guarantee the true hours. It is the responsibility of the purchaser and/or his agent to verify engine hours, warranties implied or otherwise and major overhauls as well as all other representations noted on the listing.

Dinghy Disclaimer

All dinghies are considered separate vessels and should have separate titles and documents. There is no guarantee as to the title of the dinghy on this vessel so Buyer accepts that while he may receive the dinghy included in the transaction, he may not receive the proper title to it.