

2021 FP Elba 45 MALI HAVANA



## Basic Vessel Summary

<b>Manufacturer:</b>	FOUNTAINE PAJOT
<b>Model:</b>	FP Elba 45
<b>Model Year:</b>	2021
<b>Year Built:</b>	2021
<b>Type of Yacht:</b>	Sail
<b>Price:</b>	\$856,000
<b>Condition:</b>	Used
<b>Status:</b>	Sold
<b>Location</b>	Fort Lauderdale Florida (FL)
<b>Manuf. Length:</b>	44' ( 13.41 m)
<b>Maximum Draft:</b>	4' 4" ( 1.32 m)
<b>Beam:</b>	24' 6" ( 7.47 m)
<b>No. of Cabins:</b>	4
<b>No. of Heads:</b>	4
<b>Fuel Capacity:</b>	124 g
<b>Water Capacity:</b>	185 g
<b>Cruise speed:</b>	7.5kn
<b>Max speed:</b>	9kn
<b>Weight - Displacement:</b>	15.232 ton (30464 lb)
<b>Hull Material:</b>	Fiberglass
<b>Hull Configuration:</b>	Catamaran
<b>Engine Manufacturer</b>	VOLVO
<b>Engine Model</b>	2D-60F
<b>Engine Year</b>	2019
<b>Engine Horsepower</b>	60

<b>Engine Hours (Port)</b>	2370
<b>Engine Hours (Starboard)</b>	2370
<b>Engine Type</b>	Inboard
<b>Engine Configuration</b>	Twin
<b>Engine Condition</b>	Used
<b>Does the boat have a generator?</b>	Yes
<b>Generator Model</b>	Onan
<b>Generator Operating Hours</b>	6432
<b>Generator Horsepower</b>	11 KW
<b>Does a dinghy come with the boat?</b>	Yes
<b>Dinghy Model</b>	Tender Highfield CL 380 Center Console
<b>Dinghy Model Year</b>	2021
<b>Dinghy Outboard Manufacturer</b>	YAMAHA
<b>Dinghy Outboard Horsepower</b>	25
<b>Dinghy Outboard Year</b>	2021

## Full Specification

### Layout & Accommodations

Aft Cabin

Access s through wooden door in passageway

Double bed (1,60x2,00 m approximately.) with lateral access s (island bed)

1 Drawer under bed with frontal access s

Shelving on side of bed

1 hanging closet

1 Console with shelves inside

Ventilation though1 deck hatch + via1 porthole overlooking rear deck

Aft panoramic bay

Large non-opening outward-facing picture window

Curtains on all openings

Main lighting via spotlights LED and 2 bedside reading lights

Coat hook

Cupboards storage under bed

Aft and forward bathrooms

Access through wooden door

Worktop with sink

Mirror + shelves

Hot and cold water by mixer.

Separate shower with mixer tap with built-in showerhead

Shower with electrical drainage pump

Large manual marine toilet.

Cupboard storage with internal shelves under worktop

Coat hook

Ventilation through 1 deck hatch

2 spotlights

Fore cabin

Access s through wooden door in passageway

Double bed (1,60/1,3x 2m approximately.) with lateral access (island bed)

1 Drawer under bed with frontal access s

1 hanging closet

1 console with internal shelves.

1 shelf above bed

Ventilation through 1 deck hatch and 1 hull hatch

1 escape hatch opening

Large non-opening outward-facing picture window

Curtains on all openings

Main lighting via spotlights LED and 2 bedside reading lights.

Coat hook

Cupboards storage under bed

## Galley

Saloon

Saloon access through a sliding Altuglas door – 1 with entrance carpet

Panoramic view through picture windows and aft-facing porthole

Natural lighting by 2 roof bay

1 wooden table

6 places bench seat.

Large cupboards under bench

Ventilation via 2 large front-opening hatches

Principal lighting by spot LED

Galley

Open kitchen to the outside by sliding bay

Sink work top in synthetic resin

2 stainless steel sinks

Pressurized hot and cold freshwater from mixer faucet

1 draining board

1 top accessed trash can, bags removed through separate door

- 1 x 3 burner stove with pan holder
- 1 stainless gas oven
- 1 cutlery drawer
- 2 large cupboards under sinks
- Dishwasher
- 130 L fridge
- Additional 2 drawer fridge under navigation table
- 1 large cupboard in starboard side of the entry door.
- LED spotlighting
- Ventilation by 1 opening hatch above stove top
- Fully equiped kitchen
- Nespresso coffee maker

## Deck & Equipment

Cockpit

- 1 x 8 persons bench seat around the table
- 1 Teck cockpit table
- Serving hatch to the kitchen by sliding bay
- 1 fainting sofa
- 1 Large storage area on the bench
- 1 Large storage area on the fainting sofa
- 1 Gas chest for 2 bottles
- Natural lighting and ventilation via deck hatches
- Lighting by waterproof spotlights
- Additional SUP rack on the back side of the cockpit for comfortable access
- Solar pannels for additional power and protection in the cockpit

## Electronics & Navigation

Chart Table

- Wooden chart table and storage with flap
- Hight navigation instruments console
- Electric panel 12V
- One 12V electric outlet
- Chart table lighting by reading light
- Garmin
- Chart-plotter at helm and at Nav. Station in salon
- Radar 24 mile
- Autopilot
- Wind direction and speed
- Speed

Depth

## Electrical, Power & Plumbing

2 x 115A/12V engine alternators

NEW set starboard onboard/engine batteries of 840A/h NEW May 2024

Solar panels 700W

1 port engine battery of 100A/h/ 800CCA

1 Manual back-up link

12V electrical distribution panel

General 12V distribution panel at chart table protected by circuit breakers

Voltmeter for onboard batteries

Spare sockets for extra equipment

Starlink internet

Hydraulic gangway

## Engine & Mechanical

2 motors 44KW (60HP)

2 Max Props foldable 3 blades propeller

Salt water filter.

Engine cooling by heat exchanger

Complete engine panel and dual controls at helm station

Hour meter

Big set of spare parts

## Sails & Rigging

Mast and Boom

Mast and boom in anodised aluminium

Complete standing rigging

Ball bearing mainsail luff cars

1 tackle on mainsail halyard

1 topping lift

3 reef pennants

1 genoa halyard

1 spinnaker halyard

lazy-jack

Clutches on all halyards for genoa, spinnaker and topping lift

Clutches on reef pennants at boom exit

2 flag halyards

Navigation, running and mooring lights

Deck lighting

Gennaker

Parachute spinnaker

### [Additional Information](#)

The yacht is fully loaded with equipment and toys, here just some highlights:

Strong 11 KW Onan generator

180 L (47 gallons) Aqua Base Water Maker

Individual AC in salon and all cabins

Hydraulic gangway with separate batteries

Solar panels (700W) on a SUP rack including 2x SUP

New strong tender with steering (Oct. 2022)

E-surfer

Gennaker and parachute spinnaker

Starlink internet

Folding propeller: 3 Blade Max Props

Dishwasher and washing machine

New house batteries 840 Ah (May 2024)

ONLY 1 Owner, always with full time crew

Image Gallery





















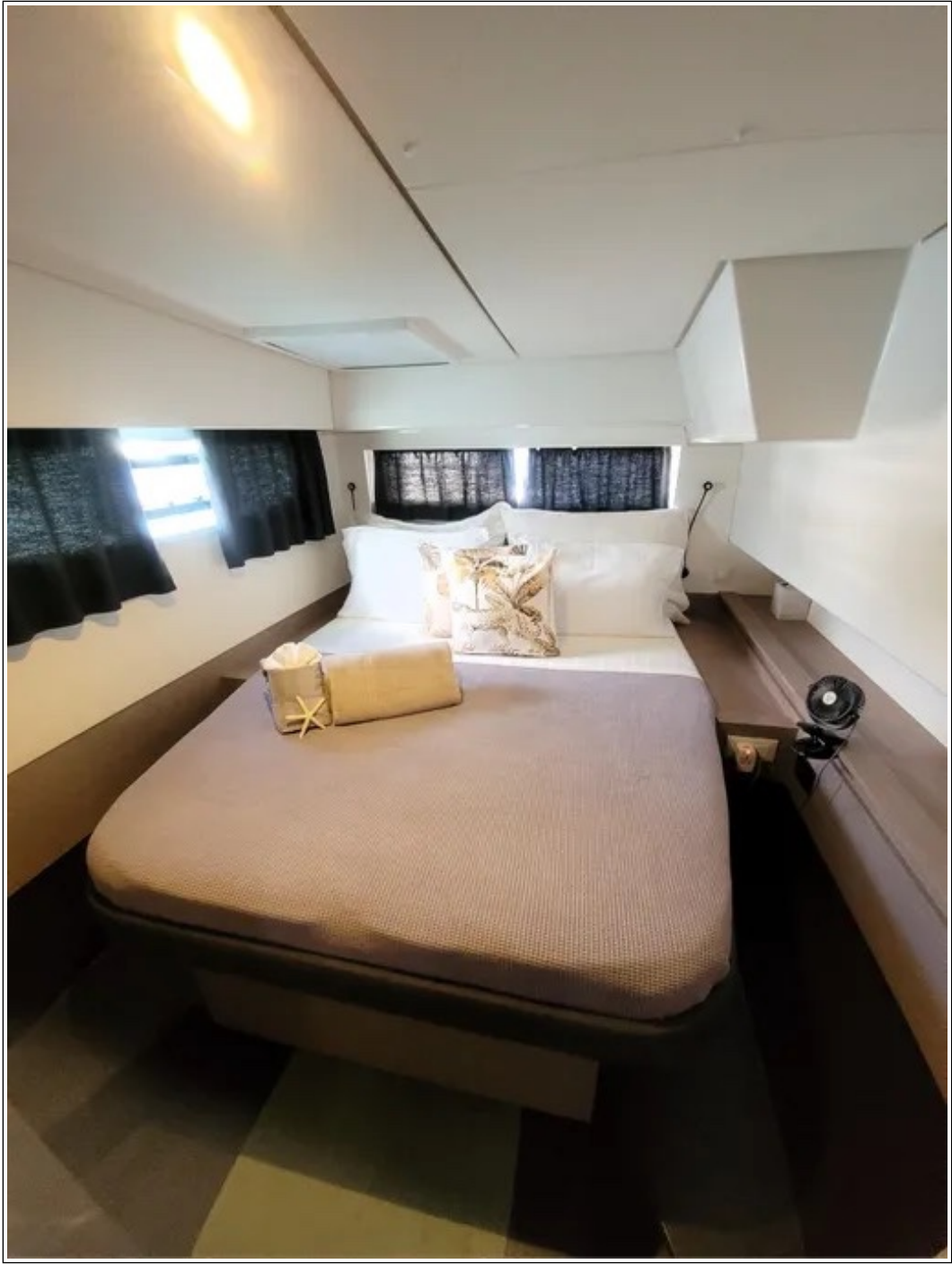






















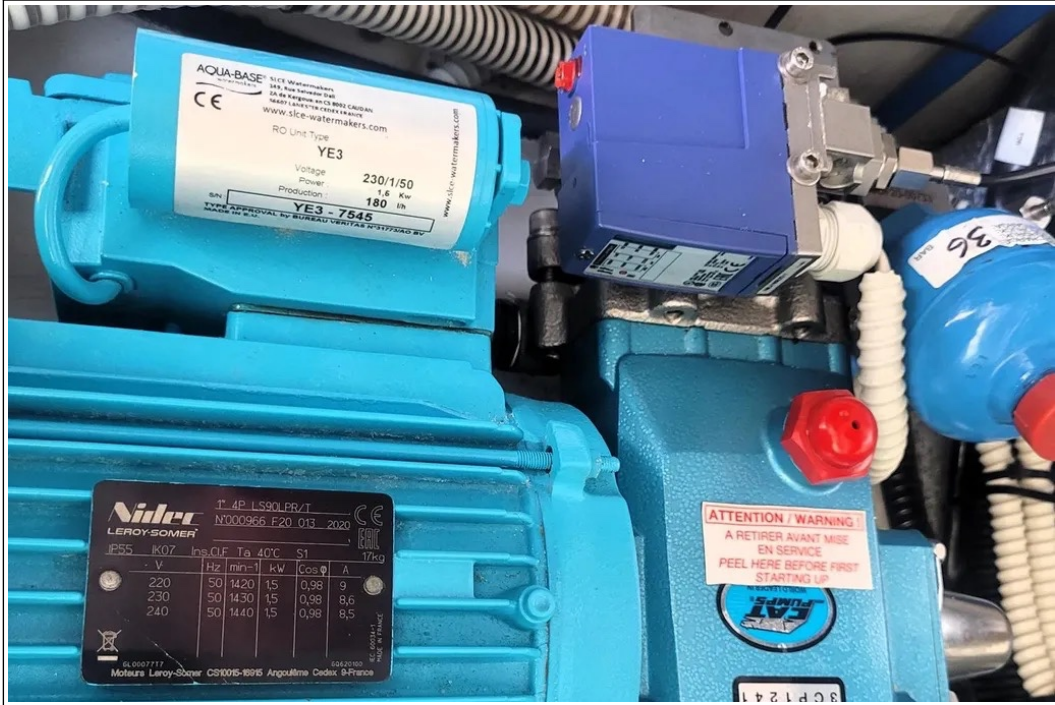
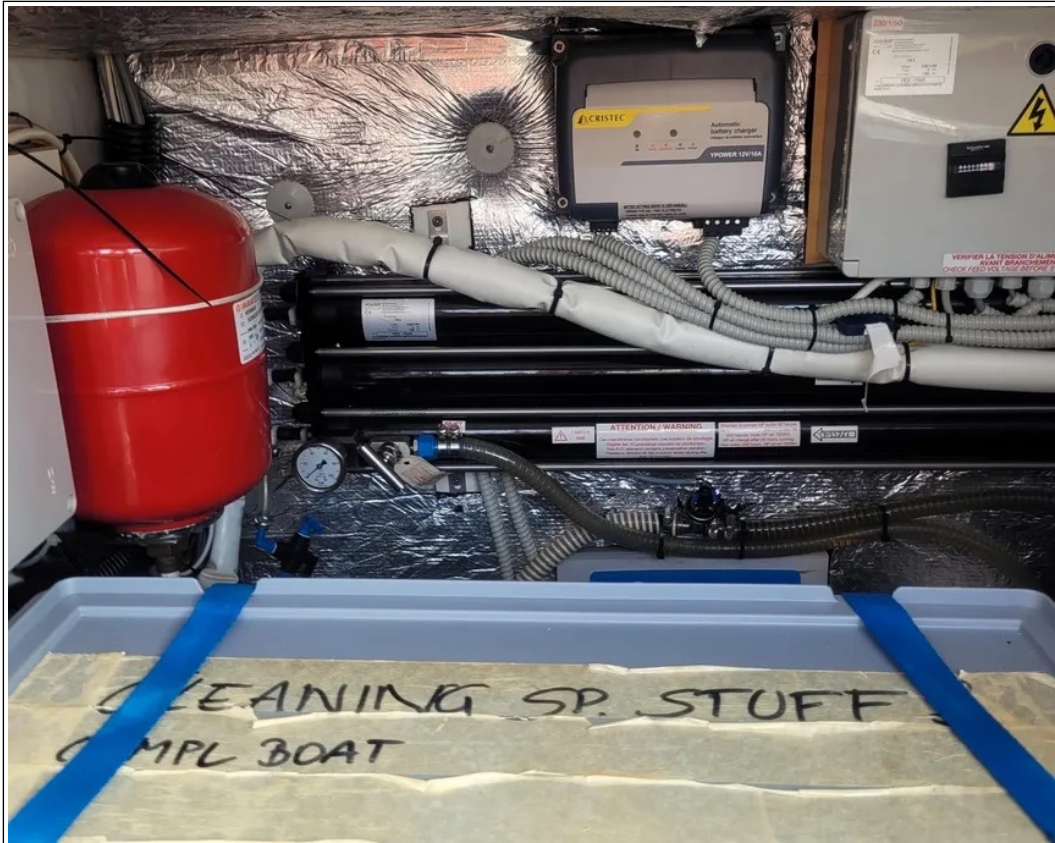




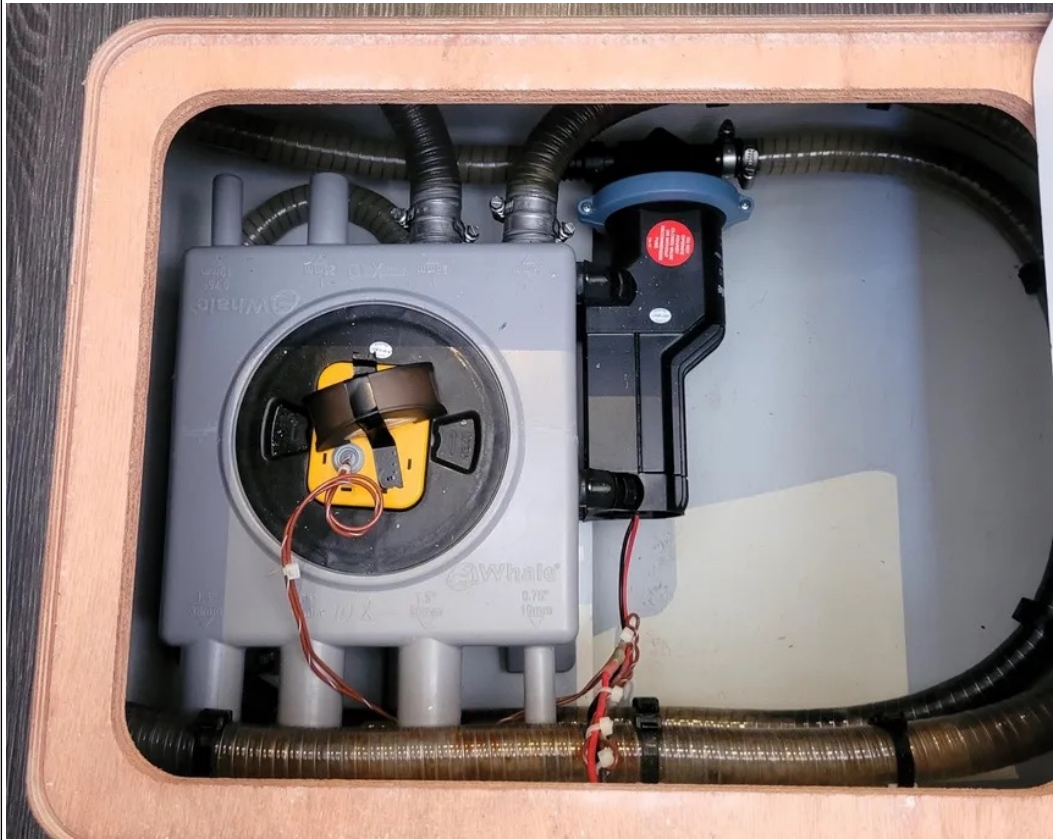
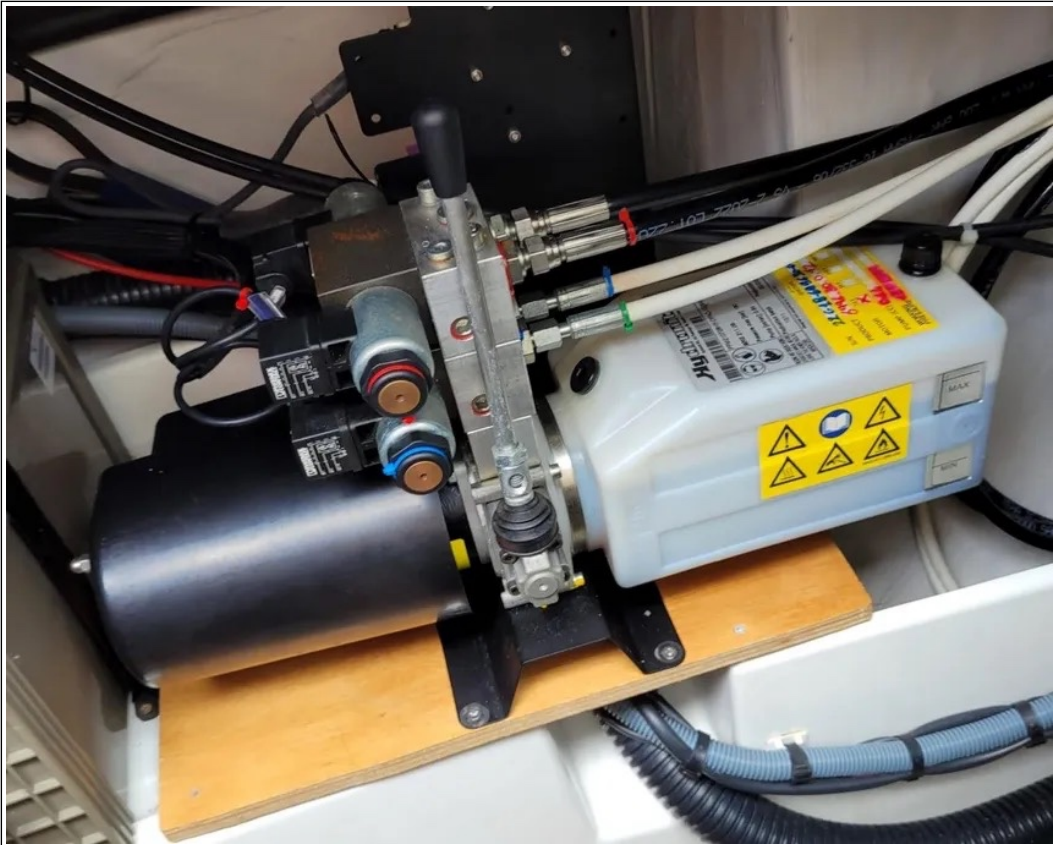








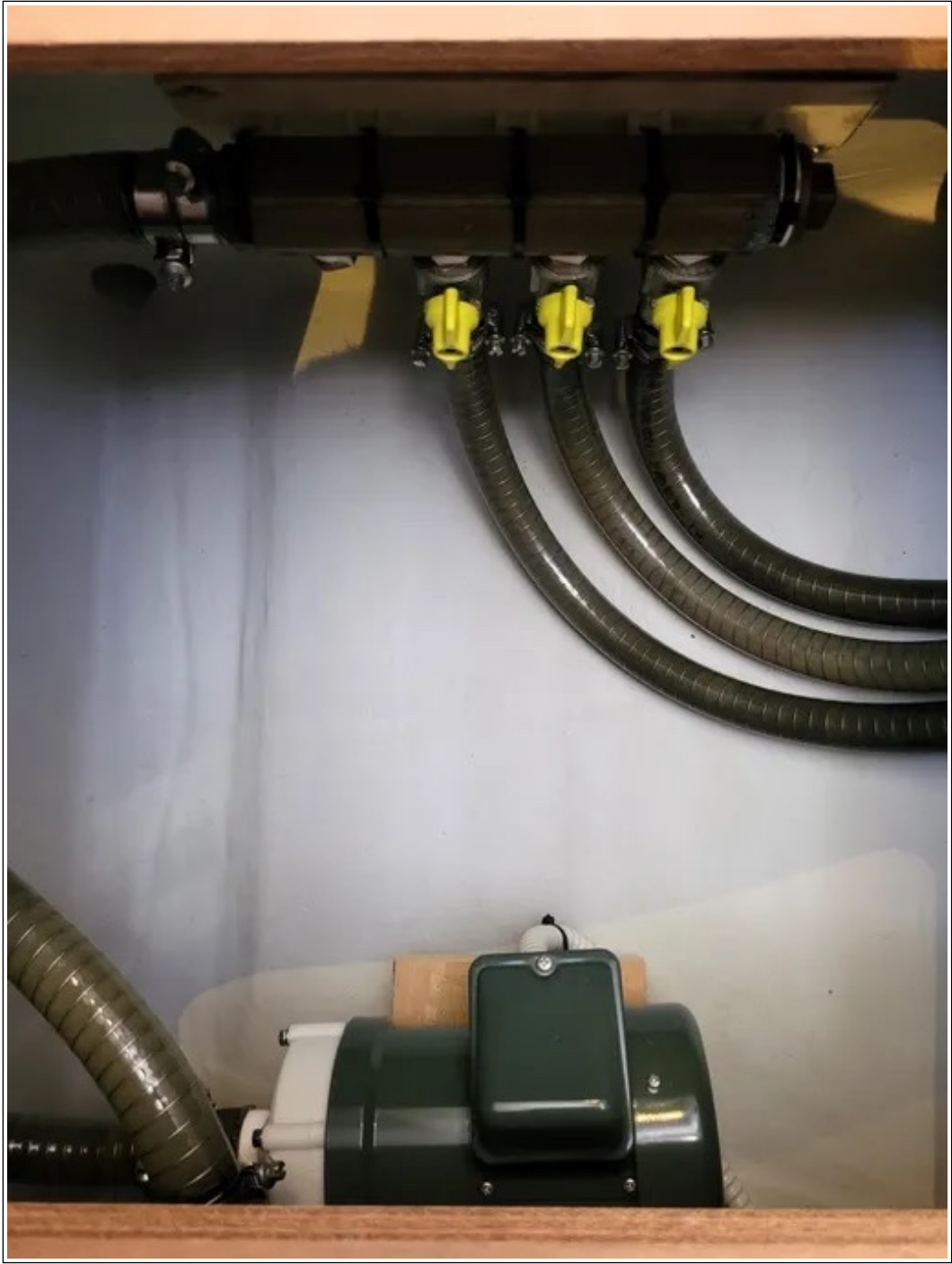


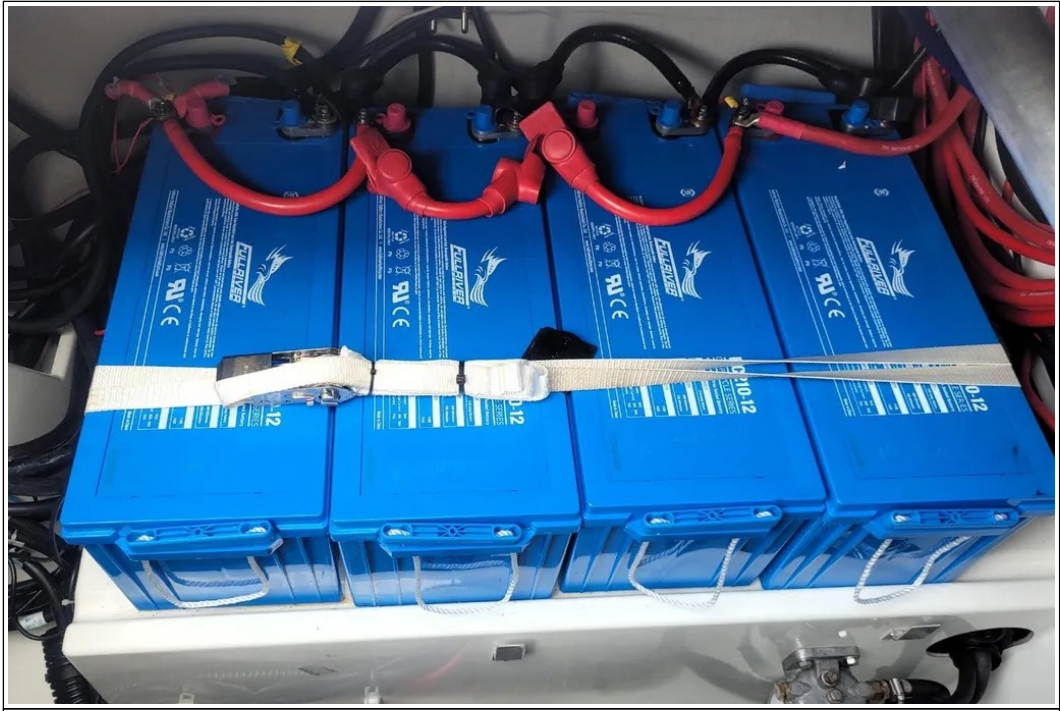






















**AEG**

6000 SERIES | LAVAMAT  
ProSense Technology 1-8kg

- 20 λεπτά - 3 κιλά
- Βαμβακερά 20°
- Αθλητικά
- Τζην
- Αντιαλλεργικό
- Ξέβγαλμα
- Συμπύκνωση/Αποστράγγιση
- Eco 40-60
- Βαμβακερά
- Συνθετικά
- Εύκολο Σιδέρωμα
- Ευαίσθητα
- Μάλλινα/Μεταξωτά
- Πάπλωμα

95° 1400  
60° 1200  
40° 800  
30°  
\*  
On/Off

Αυθόθετος  
Εξοικονόμηση Ενέργειας  
Επιλογή Προγράμματος

Αυθόθετος  
Εξοικονόμηση Ενέργειας  
Επιλογή Προγράμματος



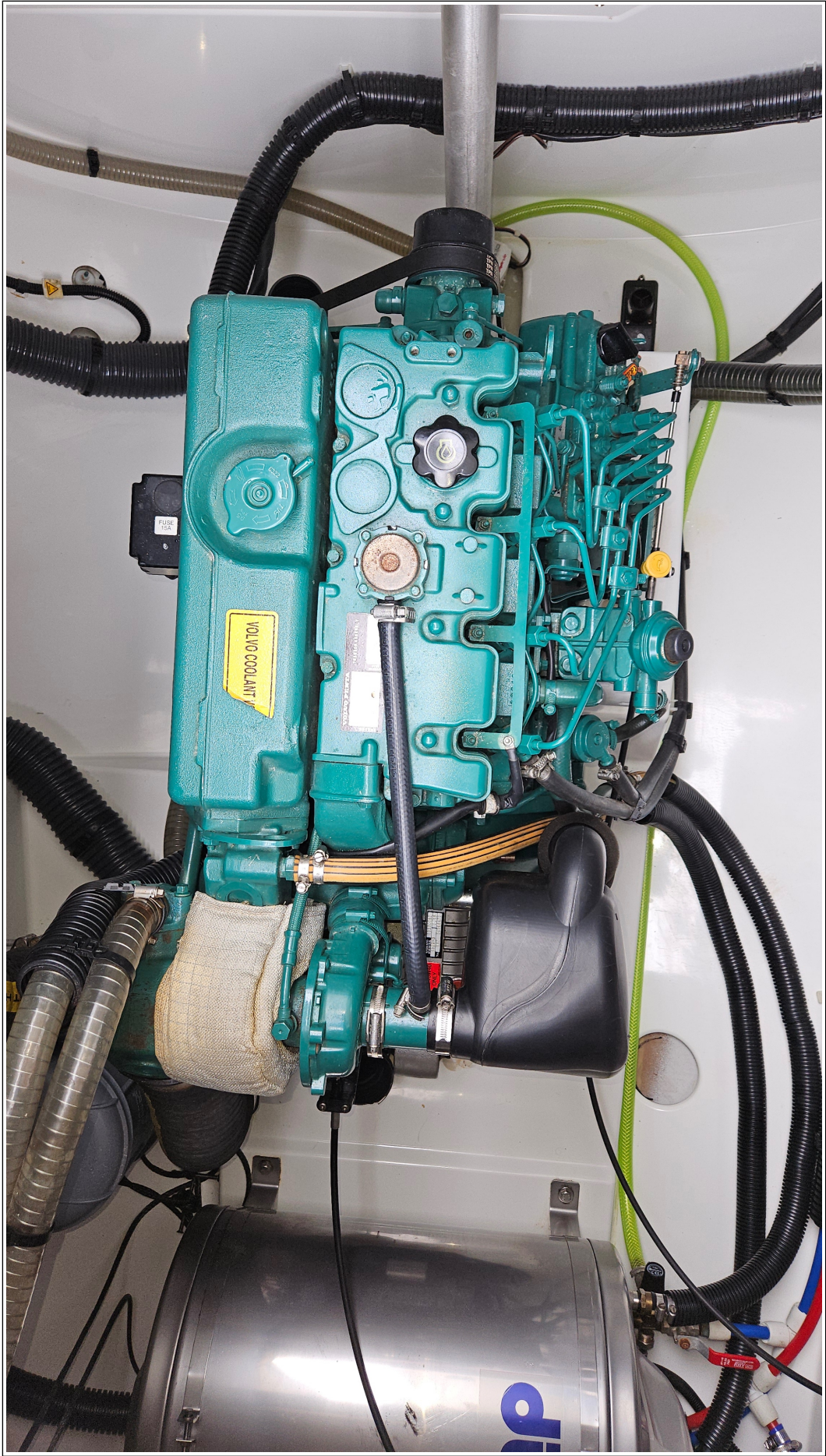


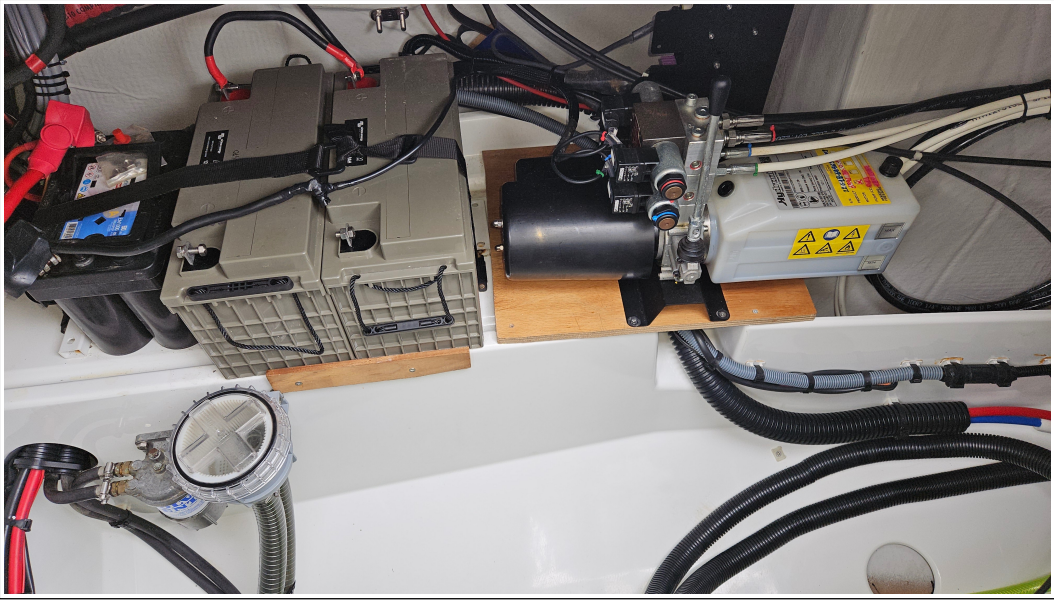






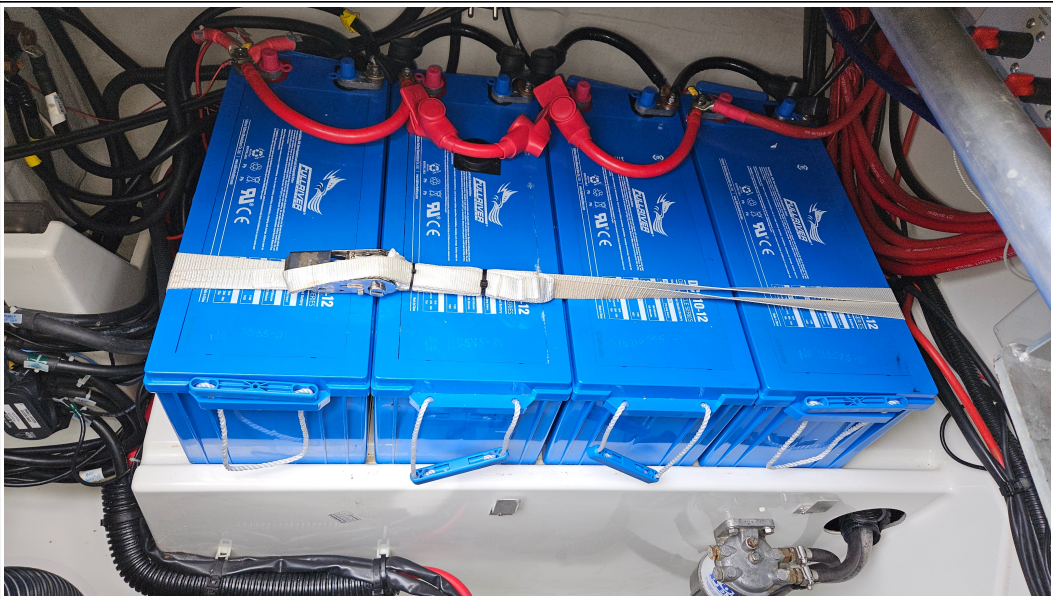




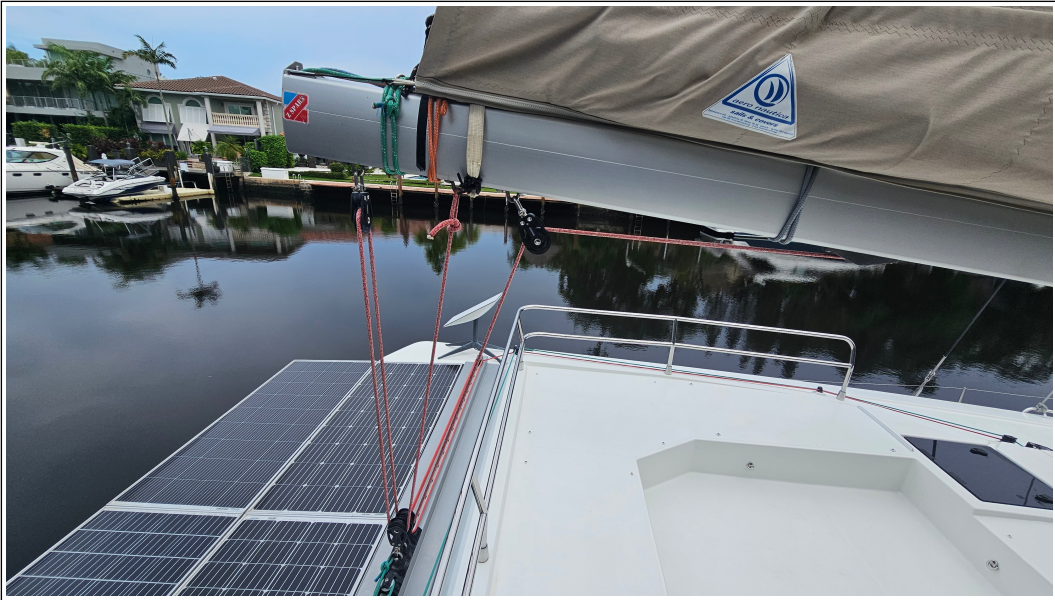


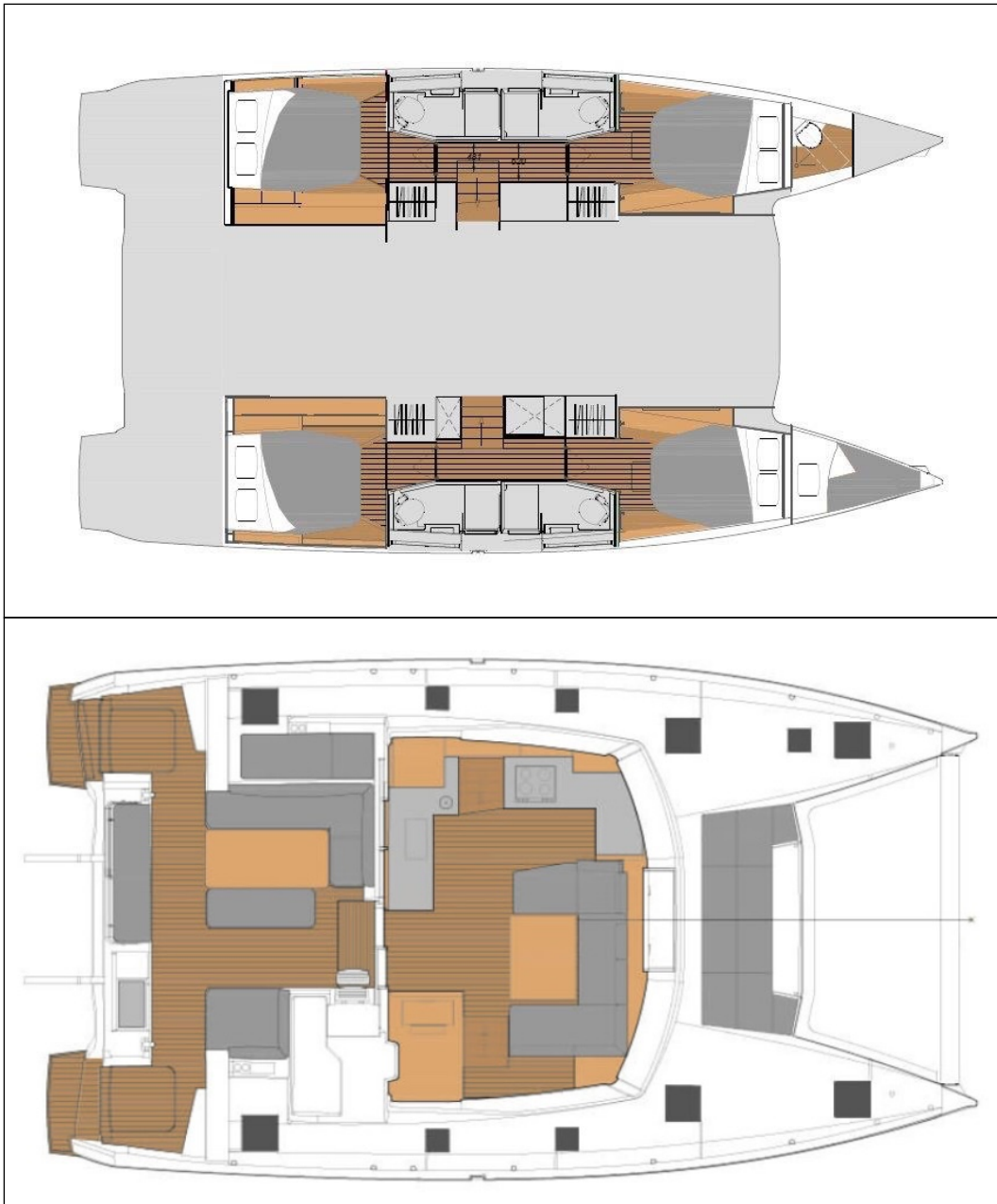












### **Disclaimer**

The Company offers the details of this vessel in good faith but cannot guarantee or warrant the accuracy of this information nor warrant the condition of the vessel. A buyer should instruct his agents, or his surveyors to investigate such details as the buyer desired validated. This vessel is offered subject to prior sale, price change, or withdrawal without notice. Photos may not properly reflect the current condition of the actual vessel offered for sale. In some cases stock photographs may have been used.

Notes: This listing is courtesy of the BoatWizard MLS and may be centrally listed with another broker. It is offered as a convenience by this broker/dealer to its clients and is not intended to convey representation of a particular vessel.

### **Mechanical Disclaimer**

Engine and generator hours are as of the date of the original listing and are a representation of what the listing broker is told by the owner and/or actual reading of the engine hour meters. The broker cannot guarantee the true hours. It is the responsibility of the purchaser and/or his agent to verify engine hours, warranties implied or

otherwise and major overhauls as well as all other representations noted on the listing.

### **Dinghy Disclaimer**

All dinghies are considered separate vessels and should have separate titles and documents. There is no guarantee as to the title of the dinghy on this vessel so Buyer accepts that while he may receive the dinghy included in the transaction, he may not receive the proper title to it.