

2020 FP Astrea 42 SAILAWAY



Basic Vessel Summary

Manufacturer:	FOUNTAIN PAJOT
Model:	FP Astrea 42
Model Year:	2020
Year Built:	2019
Type of Yacht:	Sail
Price:	\$625,000
Condition:	Used
Status:	Sold
Location	St George's Grenada
Manuf. Length:	41' 3" (12.57 m)
Maximum Draft:	4' 1" (1.24 m)
Beam:	23' 7" (7.19 m)
LWL:	41' 3" (12.57 m)
Mast Height Clearance:	67' 8" (20.62 m)
No. of berths:	6
No. of Cabins:	3
No. of Heads:	3
Fuel Capacity:	124 g
Water Capacity:	184 g
Cruise speed:	7
Max speed:	9
Weight - Displacement:	13 ton (26000 lb)
Hull Material:	Composite GRP
Hull Configuration:	Catamaran
Engine Manufacturer	VOLVO

Engine Model	D2 50
Engine Year	2019
Engine Horsepower	50
Engine Hours (Port)	1088
Engine Hours (Starboard)	1088
Engine Type	InBoard
Engine Configuration	Twin
Engine Fuel Type	Diesel
Engine Condition	Used
Does the boat have a generator?	Yes
Generator Model	Onan 120v 11.5MDKDM
Generator Operating Hours	3882
Generator Horsepower	11.5 kw
Does a dinghy come with the boat?	Yes
Dinghy Model	Highfield
Dinghy Length	11
Dinghy Model Year	CL340HYP
Dinghy Outboard Manufacturer	Yamaha
Dinghy Outboard Horsepower	15
Dinghy Outboard Year	2019

Full Specification

Layout & Accommodations

Well-designed 3 Cabin owners' version

Owners Starboard hull

Guest hull with 2 cabins and 2 bathrooms.

Salon L shaped seating and table.

Covered cockpit

Cockpit table with seating for 8

Additional seating across transom

Forward central seating/entertainment location behind trampoline

Galley

Her U-shaped galley provide excellent countertop space, and an outdoor grill/BBQ which is set discreetly above the starboard transom give prefect option for Al fresco cooking within convenient proximity to the cockpit table. A large aft bench seat creates extra seating and the additional cockpit fridge in addition to the fridge and freezer in the galley means there is plenty of cold storage.

Vitrifrigo stainless 2 drawer refrigerator

Vitrifrigo stainless freezer
Vitrifrigo stainless cockpit refrigerator
Stainless oven ENO
Stainless hob
New microwave
Stainless sink (double)
Corian countertops

Deck & Equipment

The Raised helm station comfortably accommodates two with a separate area dedicated to maneuvering and sail trimming. The skipper remains in easy contact the crew and the lines running to the helm make sailing handling easy.

8 Cleats
SS Lifelines
18 Stanchions
Upgraded to Rocna Vulcan No 33 Anchor (73 pounds)
New steering cables 2024
Upgraded anchor bridal 2024
Dinghy platform
Fenders :10
Dock lines : Standard Black dock line(nylon double braided: 8
Heavy weather/storm lines: 3/4 inch: 8 dock lines & 1 extra long line

Electronics & Navigation

Full suite of Garmin electronics at helm station. Details and specs
Garmin GPS Map 1222XSV Chartplotter (outside Helm station)
Garmin GPS Map 1224XSV Chartplotter (inside helm)
2 Garmin GMI 20 Instrumentation
1 Garmin GHC 20 (Auto pilot control)
Garmin Reactor 40 Mechanical (Auto Pilot)
Garmin AIS 800
Garmin gWind
Garmin VHF 315 Series
Garmin GPS 24XD NMEA 2000
Chain counter (Quick) at helm station & Quick Remote in chain locker
Solar panels 4 x 325W (1300 total New 2023)

Electrical, Power & Plumbing

120v electrical system
11.5 KW Onan generator

Victron Electrical Systems:

Victron multiplus 12V/3000 VA/120 (3000 inverter charger)

Victron BMV 712 Smart Cerbo battery communication hub

2 Victron BMS 12/200

2 Victron BVM AGM 500A/50 mv

2 Victron BVM Lithium 500A/50mv

2 Smart Battery Sense 12/24/48 V

4 Smart Lithium 12V/200AH Batteries

2 Smart Solar MPPT 100/50

Cerbo GX communication interface

Victron Cerbo GX

Victron Inside Helm Station Screen

Victron battery monitor display GX50

2 X Victron AGM Starter Batteries 12V-165 AH

AC: Dometic , 6 units with individual controllers

Water maker : Aqua-Base Series ESW 601 12V (65 liters an hour/17 gallons per hr)

New water maker membrane Jan 2023 for Rainman portable water maker

Rainman portable water maker; 110 volt, 40 gallons per hour.

Hot water tank electric/engine heating

4 X 325W Solar panels (Panasonic Model # vbhn325sa17)

2 X Smart BMS 12/200

Stainless steel solar supports

Engine & Mechanical

Twin Volvo d2-50 and volvo saildrives Last serviced

Engine hrs port : every 200 hours or once a year which ever comes first

Engine hrs Starboard Last serviced every 200 hrs or once a year whichever comes first

Replaced port side 2x engine mounts 2024

Sail drives services and new zincs Nov 2023

High output alternators Standard alternators

Sails & Rigging

Square top sail are factory original

Genoa

Stainless rigging

3 winches, 1 electric

Additional Information

Safety items :

Liferaft Details: Plastimo Trans Ocean ISO 9650-1 (6 person Capacity) and (last served)
Unknown (no date indicated)

Epirbs: none

Personal locators: Garmin InReach Mini

Lifejackets: 6 ocean life jackets & 5 offshore self-inflating life vests with 3 safety lanyards

MOB equipment: 1 life ring, 2 horseshoe rescue systems with lighted rescue beacon

Fire Extinguishers: 4 total, 2 CleanGuard 4.75 pound clean agent extinguishers
(rechargeable) , 2 ABC 2.2 pound single use

Recent Upgrades:

New Side Shades Fabricated & Dinghy Chaps 2023

New Sunbrella deck / Salon Shade May 2023

New antifouling paint Nov 2023

Hull clean and polish Nov 2023

Cockpit table refinish Oct 2023

Upgraded anchor bridal 2024

New water maker membrane Jan 2023

Salon AC unit serviced and regassed

Entertainment:

Fusion Stereo System MS-RA70NSX, SiriusXM Ready, Bluetooth : 2 indoor and 2 outdoor
speakers

LG Smart Television 42 Inch

Combination Safe mounted inside cupboard in owners suite (Comsafe Content Jubilee-40
Junior)

ADDITIONAL ITEMS INCLUDED WITH BOAT:

2 Propane tanks (Fiberglass)

5 20 L/ 5.3 Gallon Diesel Jugs

2 x 5 gallon buckets

1 X collapsible bucket

2 x white water hoses

2 X wash down hoses
2 x water filter housings
1 X 50 foot shore power cable
1 X Extra cushion and frame to extend stern seating
2 additional anchors: Fortress FX 23 & Stock plough
West Marine Road to Chain Bucket
1 dinghy pump
2 dive floats
Snorkel Gear: 4 masks & snorkels, 5 sets of fins
4 x water float chairs
2 X pool noodles
2 X folding beach chairs
1 X large beach umbrella
2 X boat hooks
1 X Inflatable SUP and adjustable paddle & pump

Fully stocked kitchen, with appliances, dishes, cutlery, pots & pans
3 X Bedding Sets
3 X Towel Sets

SPARE PARTS FOR BOAT:

Port and Starboard Steering Cables
MDI Box
Rebuilt Volvo Seawater pump
Rebuild Kit for Volvo Seawater pump

Image Gallery













































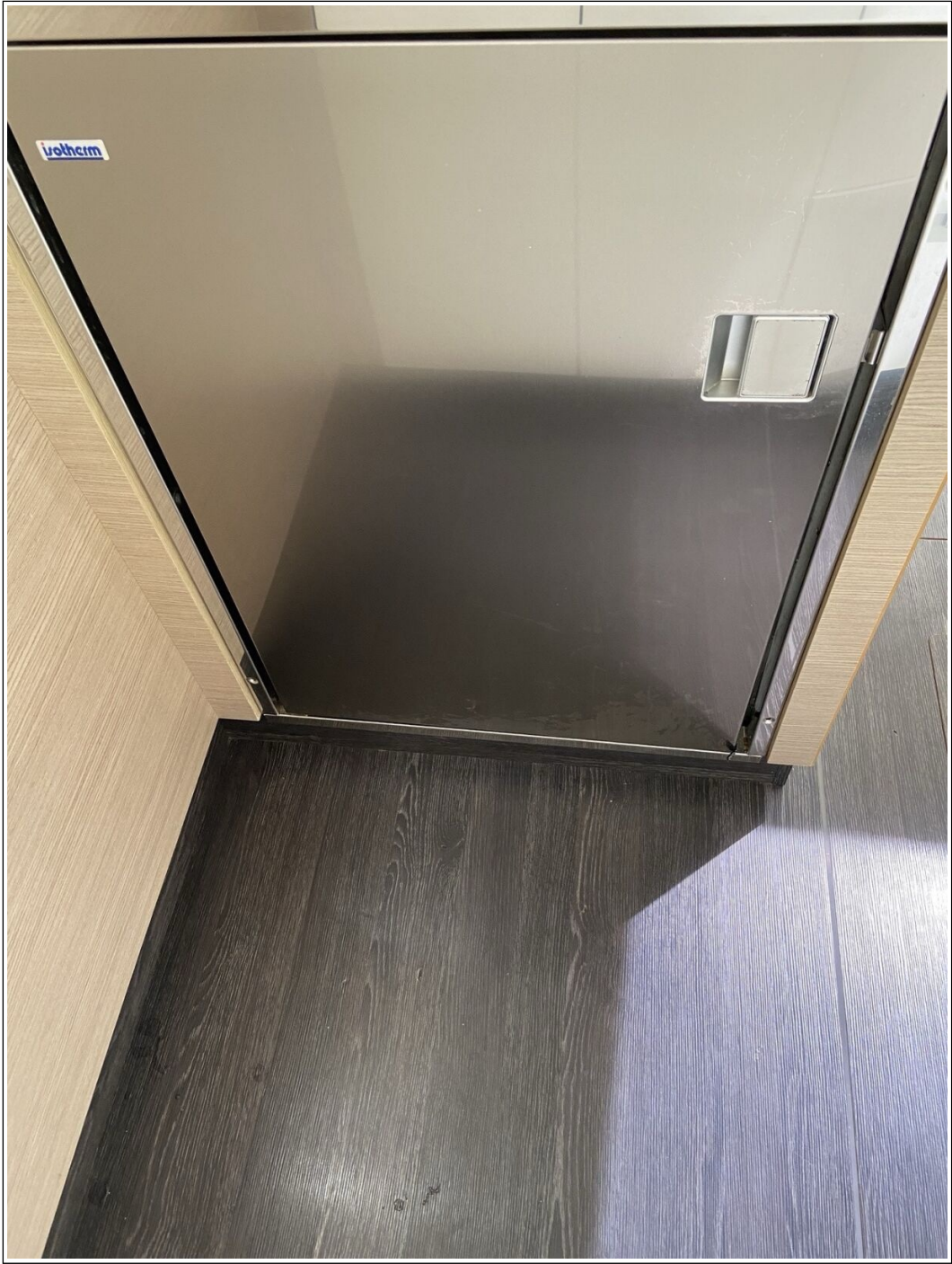
MOTEUR TRIBORD
STARBOARD ENGINE

DEMARRAGE MOTEUR
ENGINE STARTING

CUT CONTACT AFTER





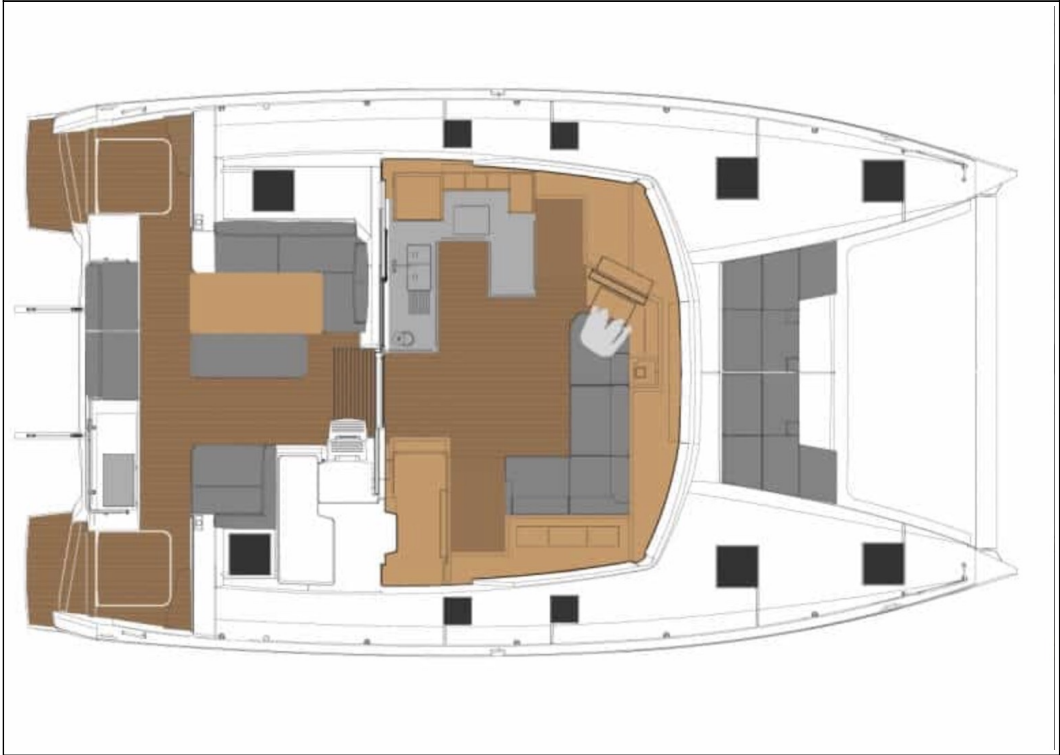
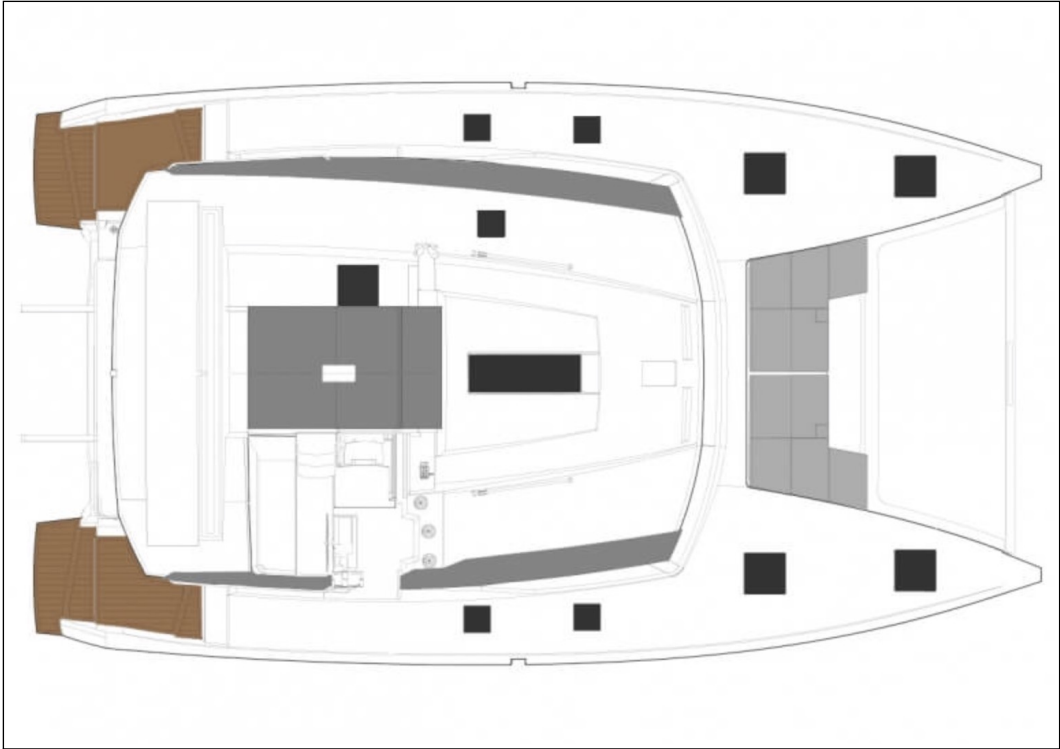


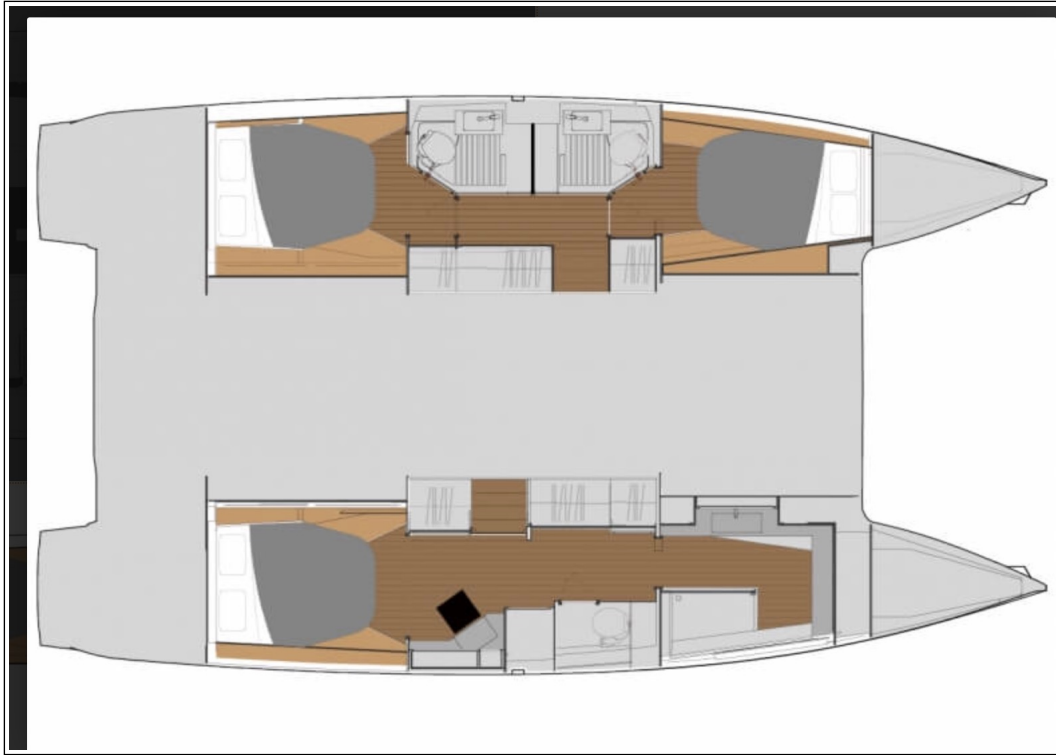












Disclaimer

The Company offers the details of this vessel in good faith but cannot guarantee or warrant the accuracy of this information nor warrant the condition of the vessel. A buyer should instruct his agents, or his surveyors to investigate such details as the buyer desired validated. This vessel is offered subject to prior sale, price change, or withdrawal without notice. Photos may not properly reflect the current condition of the actual vessel offered for sale. In some cases stock photographs may have been used.

Mechanical Disclaimer

Engine and generator hours are as of the date of the original listing and are a representation of what the listing broker is told by the owner and/or actual reading of the engine hour meters. The broker cannot guarantee the true hours. It is the responsibility of the purchaser and/or his agent to verify engine hours, warranties implied or otherwise and major overhauls as well as all other representations noted on the listing.

Dinghy Disclaimer

All dinghies are considered separate vessels and should have separate titles and documents. There is no guarantee as to the title of the dinghy on this vessel so Buyer accepts that while he may receive the dinghy included in the transaction, he may not receive the proper title to it.