

2016 Gemini Legacy 35 OCTEMBER SECOND



Basic Vessel Summary

Manufacturer:	GEMINI
Model:	Gemini Legacy 35
Model Year:	2016
Year Built:	2015
Type of Yacht:	Sail
Price:	\$216,500
Condition:	Used
Status:	Acceptance of Vessel
Location	Pompano Beach Florida (FL)
Manuf. Length:	35' 0" (10.67 m)
Maximum Draft:	2' 10" (.86 m)
Minimum Draft:	2' 10" (.86 m)
Beam:	14' (4.27 m)
LWL:	32' (9.75 m)
Mast Height Clearance:	46' (14.02 m)
No. of Cabins:	3
No. of Heads:	2
Electric Circuit:	110 volt
Fuel Capacity:	56 g
Water Capacity:	60 g
Holding tank:	1
Weight - Displacement:	4.9 ton (9800 lb)
Hull Material:	Fiberglass Reinforced Plastic- FRP
Hull Configuration:	Catamaran
Engine Manufacturer	Yanmar

Engine Model	2YM15
Engine Year	2015
Engine Horsepower	15
Engine Hours (Port)	1750
Engine Hours (Starboard)	1750
Engine Type	InBoard
Engine Configuration	Twin
Engine Fuel Type	Diesel
Does the boat have a generator?	Yes
Generator Model	NEXGEN
Generator Operating Hours	950
Generator Horsepower	5.5 kw
Does a dinghy come with the boat?	No

Full Specification

Layout & Accommodations

OWNER LAYOUT (3 cabins, 1 head)

Fans in Cabins Salon and head

Custom Coffee Table

Head Upgrade (Glass Sink, Curtain Shower, Linen Closet, Corian Seat, Teak Grating)

Upgrade All Interior Lights to LED Fixtures

Additional 12V Outlets in Cabins & Head (2 in Salon as standard)

2 Reading Lights in Salon, 2 in Master Cabin

Dura Leatherette Interior Upholstery

Master Cabin Cabinet with Matching Leather

Interior Backsplash and Main Bulkhead Wallpaper

Compression Post Wrapped with Matching Leather

Salon Convertible to King size bed

Galley

Force 10 stainless steel gimbaled 2 burner propane range with oven'

Franklin stainless steel microwave oven

Stainless steel two-sided sink with pull-out spray faucet,

Upgrade fridge with freezer: Isotherm 4.9 Cu/ft Cruise Series 12/110 volts

Deck & Equipment

2 Electric Anchor Windlass Lewmar Pro series 1000 with remote controls

150 ft of rope and chain with a oversized Fortress anchor

150 feet of chain with Delta anchor
Spinnaker with sock and full storage bag.
Lazy jacks and mainsail bag/cover with track cars for easy mainsail handling.
Clutch banks ahead of each winch upgraded to Lewmar DC2 that can be released under tension.
All Lines Run to Cockpit
Transom Shower
Starboard Cabin Option Conversion
Mainsail Cover
Custom Cockpit, Bow and Bench Cushions
Engines couplings upgraded to Sigma Drive couplings that provides effective anti-noise and anti-vibration solutions

Electronics & Navigation

C95 display with GPS, Raymarine Auto Pilot I70 display, I50 Tri Data, I60 Wind Indicator.
Raymarine Quantum Radar Q2 with display on C95
VHF Radio, Flush Mounted, Mast Head Antenna and Coax Cable
Full Function Station for VHF Radio with 2nd Handset in Cockpit
SONY Stereo with integrated Bluetooth and Salon Speakers
Integrated Cockpit Speakers
Battery Charger
Upgrade Batteries: 3 house batteries and 2 starter batteries
Additional 12V Outlets in Cabins & Head (2 in Salon as standard)
Ceiling Mounted Storage Box in the Pilot House with Drop down tv: Westinghouse 32 inch LED HD DVD Combo TV (new 2020)

Electrical, Power & Plumbing

4 solar pannels Solbian 90 watts each, walk on, semi flexible for a total of 360 watts (new 2019)
Solar Charge Controller EPEVER MPPT 30A Tracer3210AN with Remote Meter MT50 display (new 2019)
Watermaker Echotec 430 AML1 produces 20gl/hr of fresh water. Installed new membrane and fully serviced pump in January 2021
NextGen 5.5 Kw generator with 1200 hours
5 Batteries
Electric Main Bilge Pumps
Shore Power System, 120 Volt
20,000 btu Air Conditioning in Salon and Cabins 110v

Engine & Mechanical

Engines couplings upgraded to Sigma Drive couplings that provides effective anti-noise and anti-vibration solutions

Sails & Rigging

Square Top Mainsail

Mainsail Cover

Upgrade Mainsail Cover to Stack Pack

Head sail

Additional Information

Upgrades in the last two years:

Bottom paint renewed - December 2024

Forward window replaced 8/17/22 by Multi-Tech Marine Services. \$ 5,202.07

Both Yanmar Engines Serviced (oil and filter changed etc.) on 8/17/22 by Multi-Tech. \$ 1,544.71

Sailbag repaired (zipper replaced) on 8/15/22 by Multi-Tech. \$ 1,328.25

Port and Starboard Running Gear Serviced (cutlass bearings, props, shaft, alignment) by Multi-Tech on 8/19/22 \$ 9,191.22

Main Halyard Turning Block Replaced by Multi-Tech on 8/19/22 \$ 1,083.12

Generator Serviced (oil and filter changed etc.) on 8/19/22 by Multi-Tech \$ 702.30

Bottom reconditioned and painted on 8/18/22 by Multi-Tech \$4,285.70

Replaced Three Batteries on 8/19/22 with new marine batteries from West Marine \$1,013.53

Starboard Motor Mounts Replaced on 9/19/22 by Multi-Tech \$ 2,523.10

Fiberglass detailed and stainless restored by Captco, Inc. on 3/2/23 \$ 3,629.85

Replaced Two Additional Batteries with new marine batteries, replaced port and starboard bilge pumps, replaced 12V septic pump. Work done by Captco, Inc. on 3/29/23 \$2,769.22

Port Engine Mounts along with Starboard and Port Yanmar Gauges replaced by N&G Engineering on 5/3/23 \$7,465.00

Bottom reconditioned and painted, Gelcoat repaired on hull, boot stripe replaced, port and starboard engines serviced (oil and filter changed etc.), replace main A/C unit with Dometic. Work done by Holland Marine 9/8/23 \$14,728.00

TOTAL:

\$55,466.02

Image Gallery

























































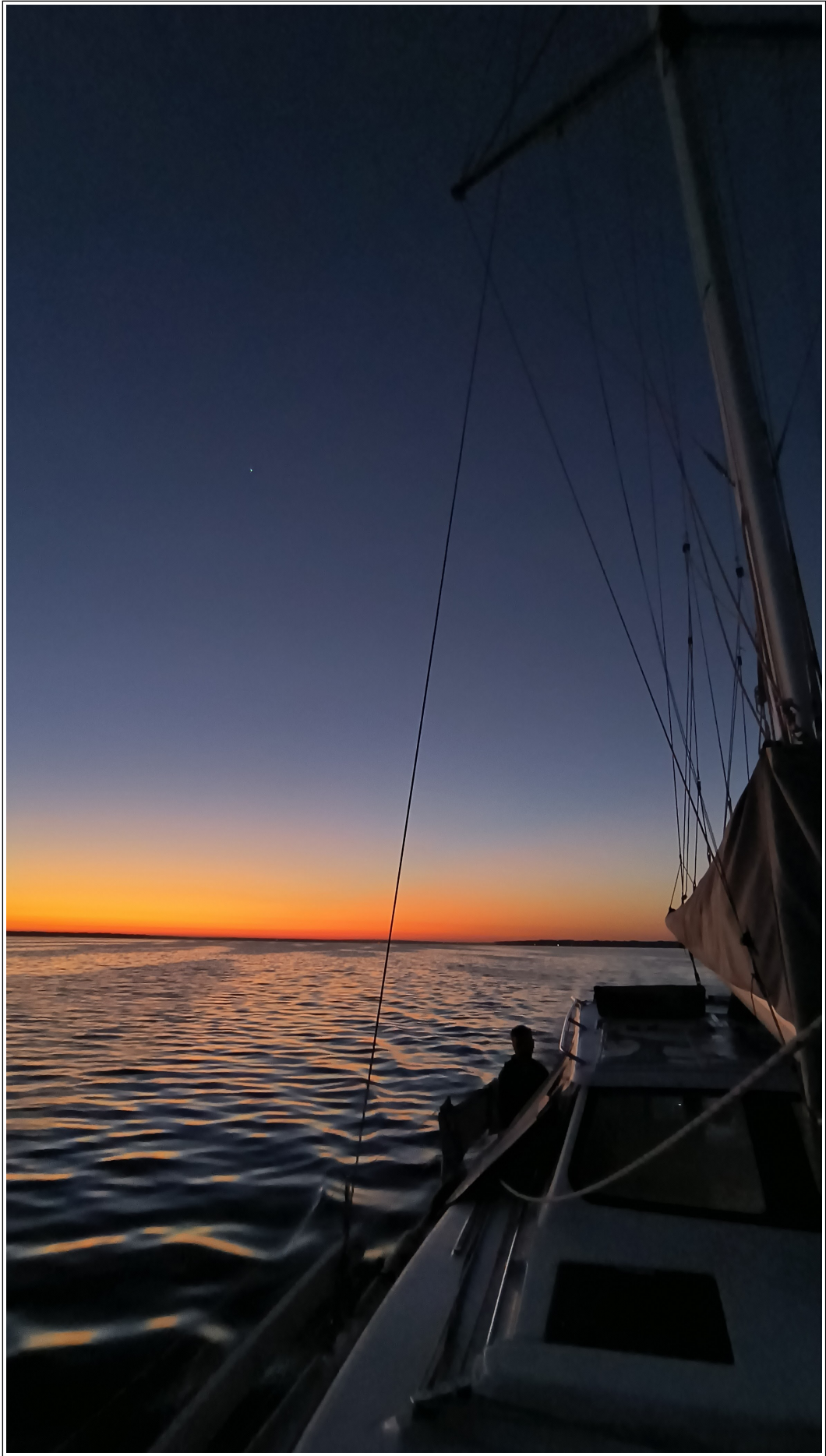


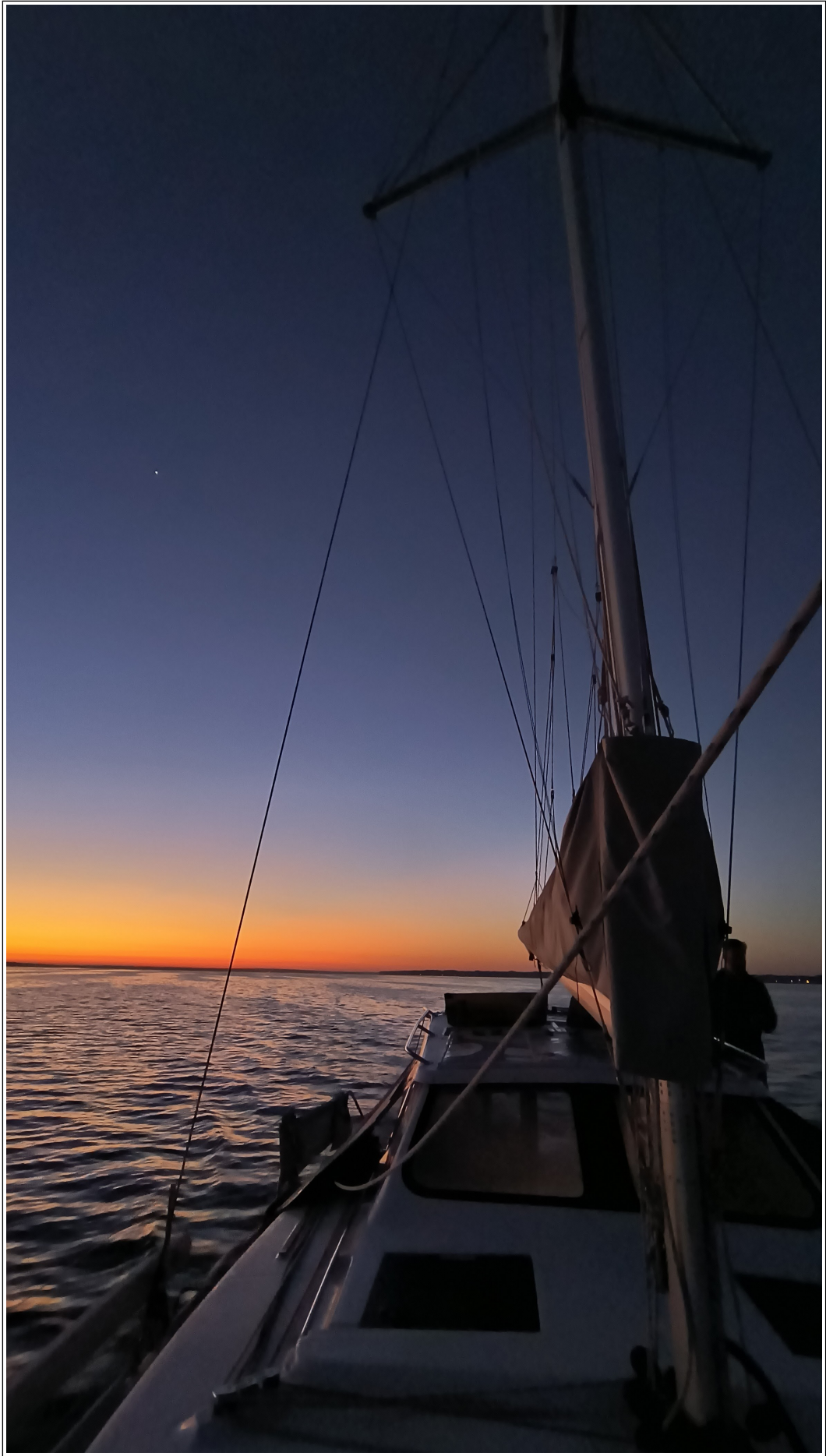


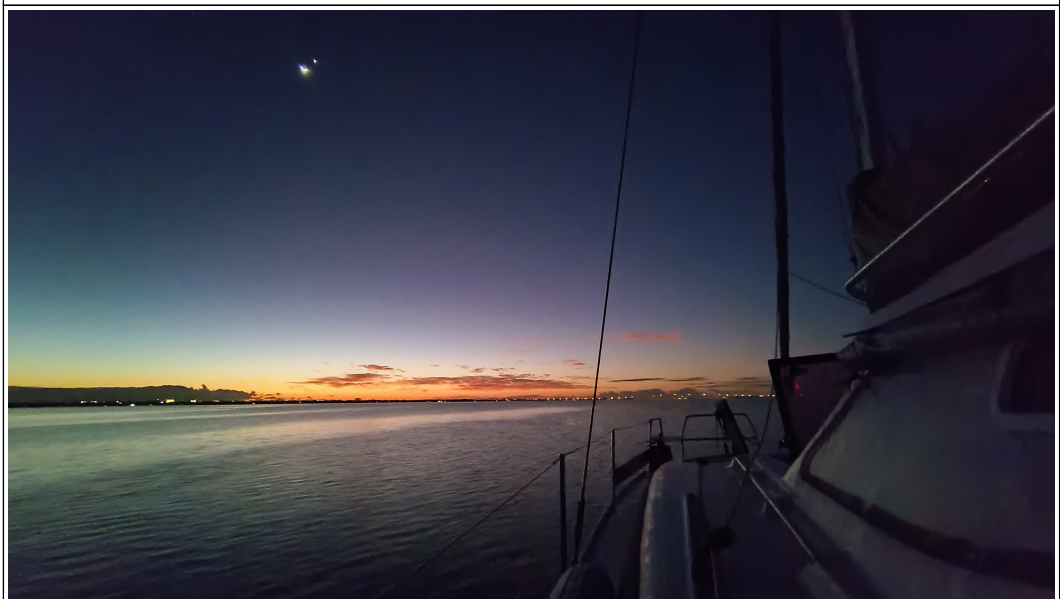
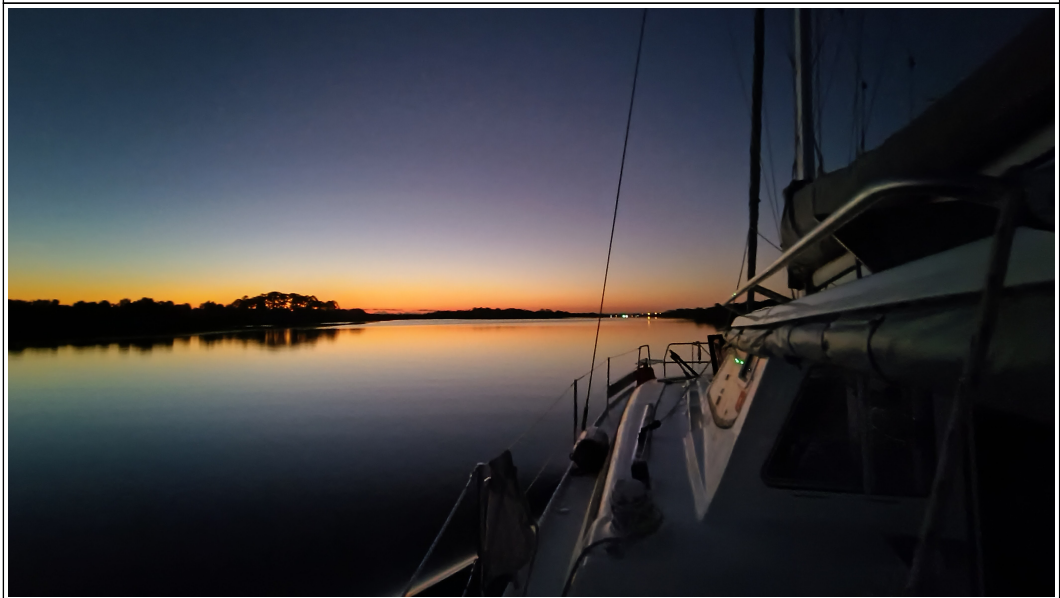














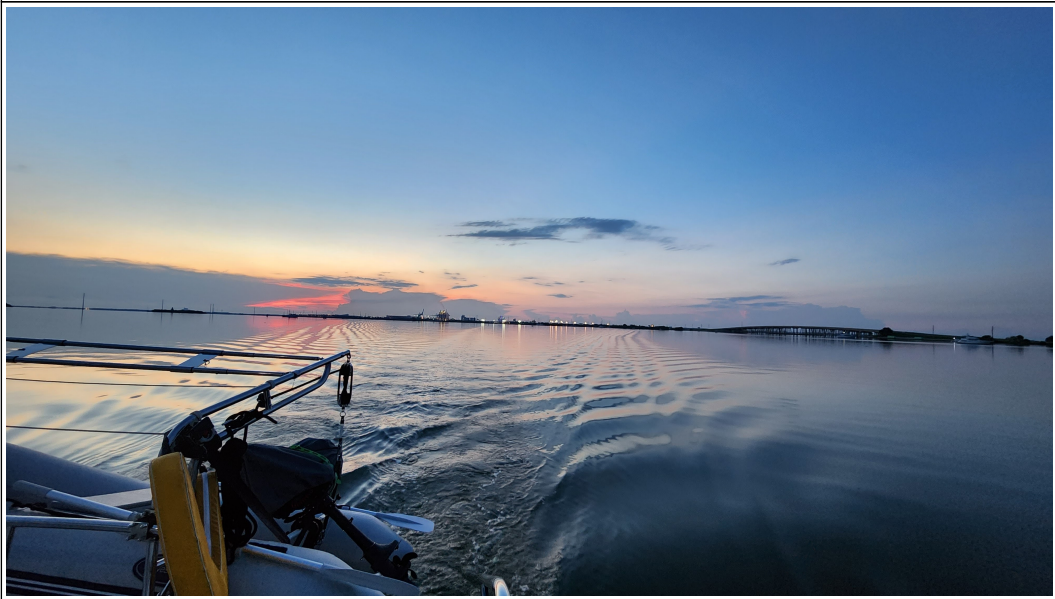
































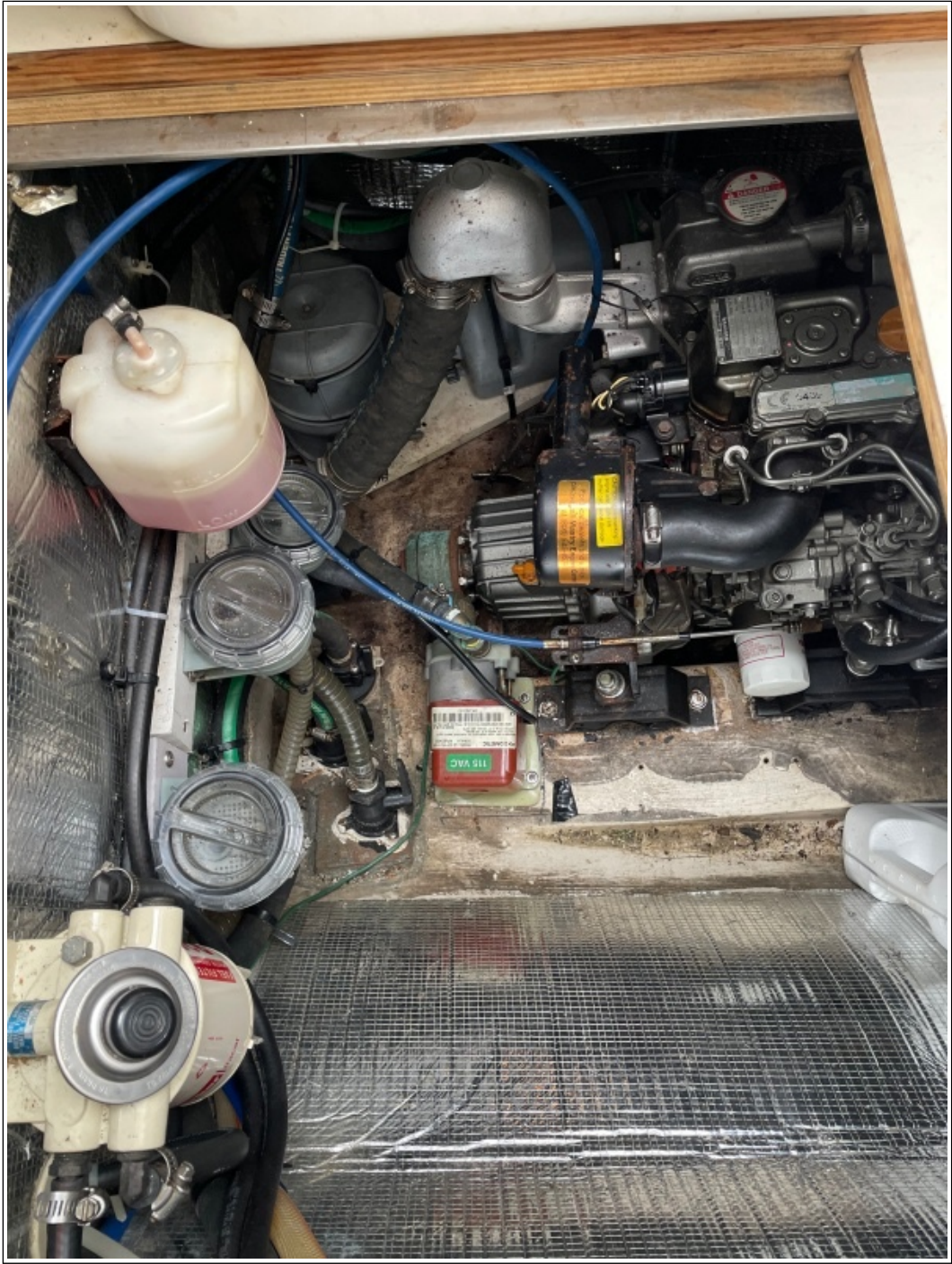














Disclaimer

The Company offers the details of this vessel in good faith but cannot guarantee or warrant the accuracy of this information nor warrant the condition of the vessel. A buyer should instruct his agents, or his surveyors to investigate such details as the buyer desired validated. This vessel is offered subject to prior sale, price change, or withdrawal without notice. Photos may not properly reflect the current condition of the actual vessel offered for sale. In some cases stock photographs may have been used.

Mechanical Disclaimer

Engine and generator hours are as of the date of the original listing and are a representation of what the listing broker is told by the owner and/or actual reading of the engine hour meters. The broker cannot guarantee the true hours. It is the responsibility of the purchaser and/or his agent to verify engine hours, warranties implied or otherwise and major overhauls as well as all other representations noted on the listing.

Dinghy Disclaimer

All dinghies are considered separate vessels and should have separate titles and documents. There is no guarantee as to the title of the dinghy on this vessel so Buyer accepts that while he may receive the dinghy included in the transaction, he may not receive the proper title to it.