

2018 Bali 4.3 ROMPECABEZAS



Basic Vessel Summary

Manufacturer:	BALI CATAMARANS
Model:	Bali 4.3
Model Year:	2018
Year Built:	2018
Type of Yacht:	Sail
Price:	\$450,000
Condition:	Used
Status:	Sold
Location	St Thomas Virgin Islands (US)
Manuf. Length:	43' 4" (13.21 m)
Maximum Draft:	3' 11" (1.19 m)
Beam:	23' 5" (7.14 m)
LWL:	41' 8" (12.70 m)
No. of Cabins:	3
No. of Heads:	2
Electric Circuit:	110 volt
Fuel Capacity:	211 g
Water Capacity:	211 g
Holding tank:	31.7gal x2
Hull Material:	Fiberglass Reinforced Plastic- FRP
Hull Configuration:	Catamaran
Engine Manufacturer	Yanmar
Engine Year	2018
Engine Horsepower	40
Engine Hours (Port)	1620

Engine Hours (Starboard)	1585
Engine Type	InBoard
Engine Configuration	Twin
Engine Fuel Type	Diesel
Engine Condition	Used
Does the boat have a generator?	Yes
Generator Model	Onan
Generator Operating Hours	5047
Does a dinghy come with the boat?	Yes
Dinghy Model	Highfield
Dinghy Length	10ft
Dinghy Model Year	2018
Dinghy Outboard Manufacturer	Suzuki
Dinghy Outboard Horsepower	15
Dinghy Outboard Year	2021

Full Specification

Layout & Accommodations

Aft cockpit, front cockpit and flybridge
Hot & Cold cockpit shower
Indirect lighting in saloon and cabins
Forward cockpit courtesy lighting
Saloon to forward-cockpit window fully retractable
Lateral sliding bays
Aft tilting bay mechanism assisted by pneumatic struts
Extra ventilation by 2 extra portholes in each hull
3 x Electric toilet (Fresh Water system)
4 x 12 V fans per cabin, saloon
Reversible air conditioning for 3 cabins
Convertible saloon table for double berth
2 forward cockpit removable tables

Galley

American fridge freezer (615 L with chilled water & ice maker and dedicated power supply)

Deck & Equipment

LED navigation lights - Cockpit extension by tilting platform

Main Anchor 20 kg + 70 m chain

Electronics & Navigation

12 V outlets (1 per cabin , 1 at chart table and 1 in forward cockpit)

Raymarine Electronic Pack 2 including: Pack 1 + VHF RAY MIC at steering station

AIS receiver transmitter, 12" full touch screen at steering station

Radio HiFi 4 loud speaker Bluetooth

Electrical, Power & Plumbing

Multiplex electrical panel touch screen

Combined battery charger 70 Amp

Inverter 12/110/220v, 2000VA

Battery controller

Extra Fresh water tank of 400L for a total of 800L

Kit Solar panels: 4 x 100 W

ONAN generator 11,5 KW 60hz with soundshield 110 V

110 volts electrical system instead of 220 v. (water heater, bat. charger, outlets, converter)
and installation of 110 V outlets

Engine & Mechanical

Upgraded sound insulation for engine room

Extra Fuel tank of 400L for a total of 800L

Polywood outboard engine support

Sails & Rigging

Electrical 1000 W windlass

Solent furler

Mainsail electrical winch

Automatic reef on first reef

Reinforced Dacron Full-Batten Mainsail & Solent with UV protection + Lazy-Bag Jack

Helmstation canvas awning on SS frame

2 stern spring cleats

Additional Information

Davits for dinghy - SS pulpits with Polywood seats

Water maker installed, but we never used it and we will not replace or repair it.

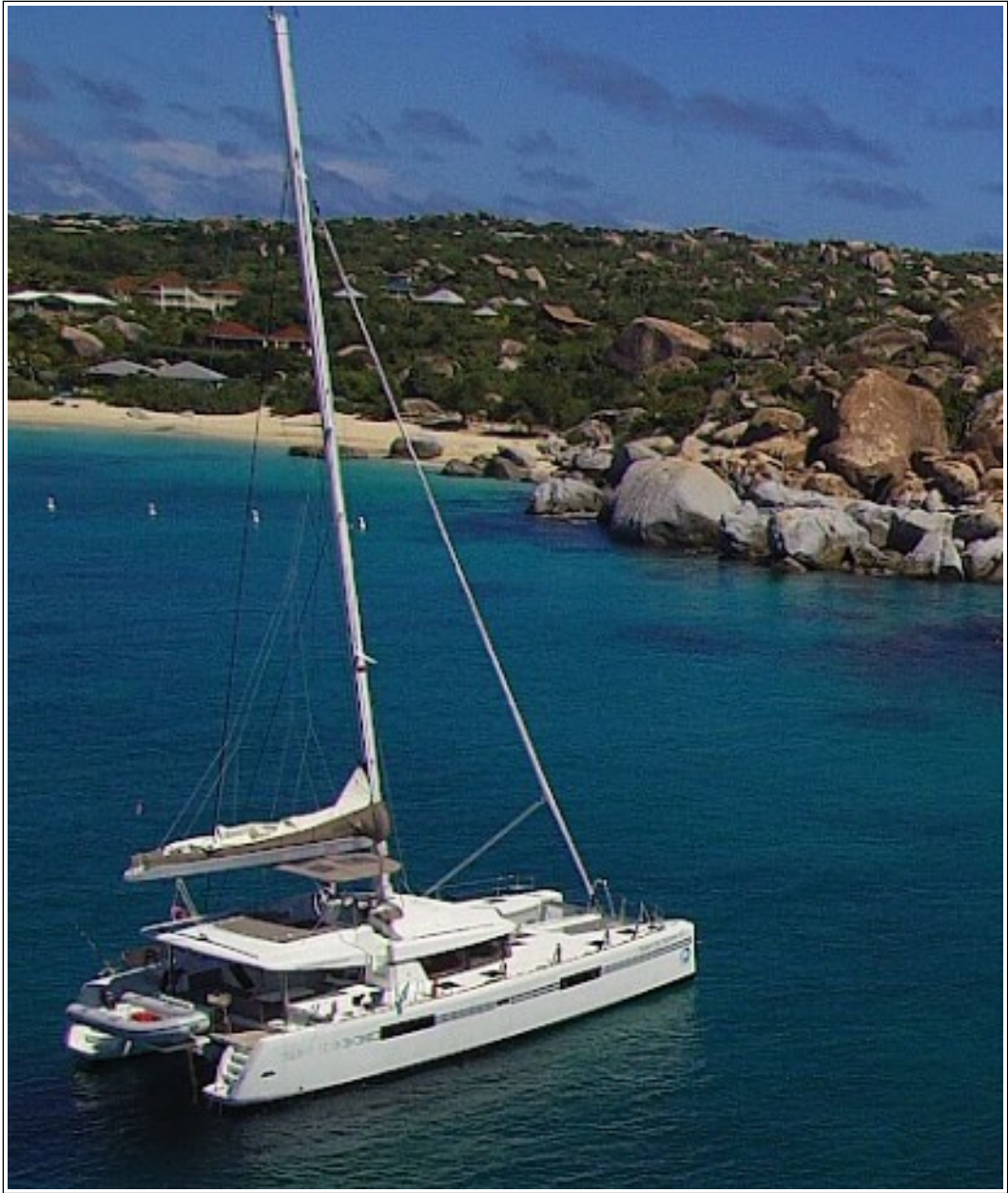
2x Inflatable Standup Paddle Boards

Inflatable swim mat

Other cruising and kitchen/dining equipment excluding current owners personal affects

Image Gallery





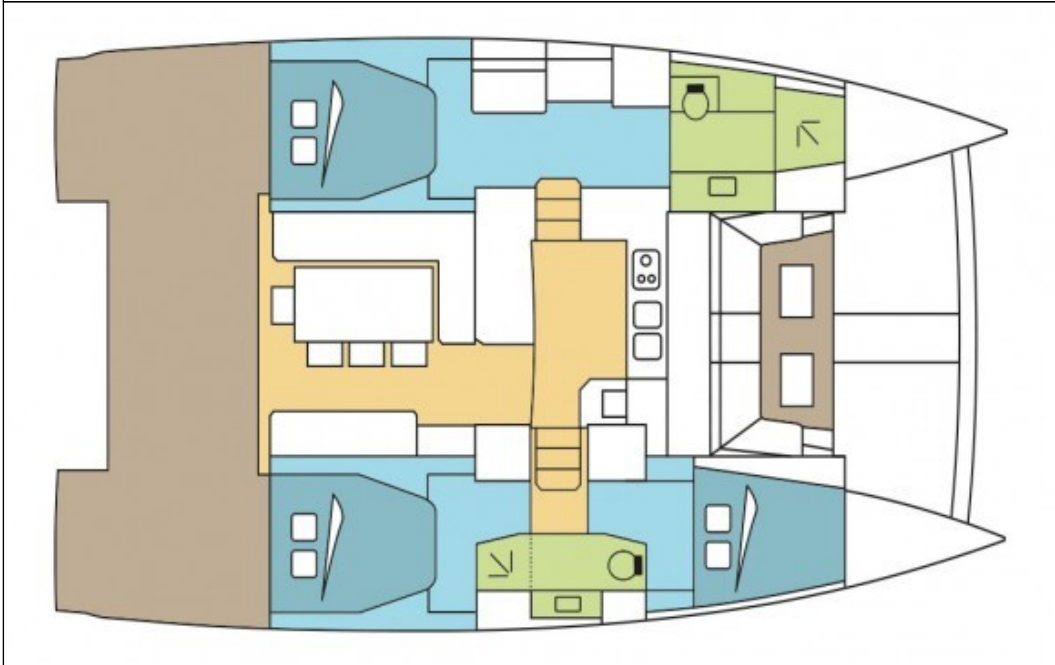




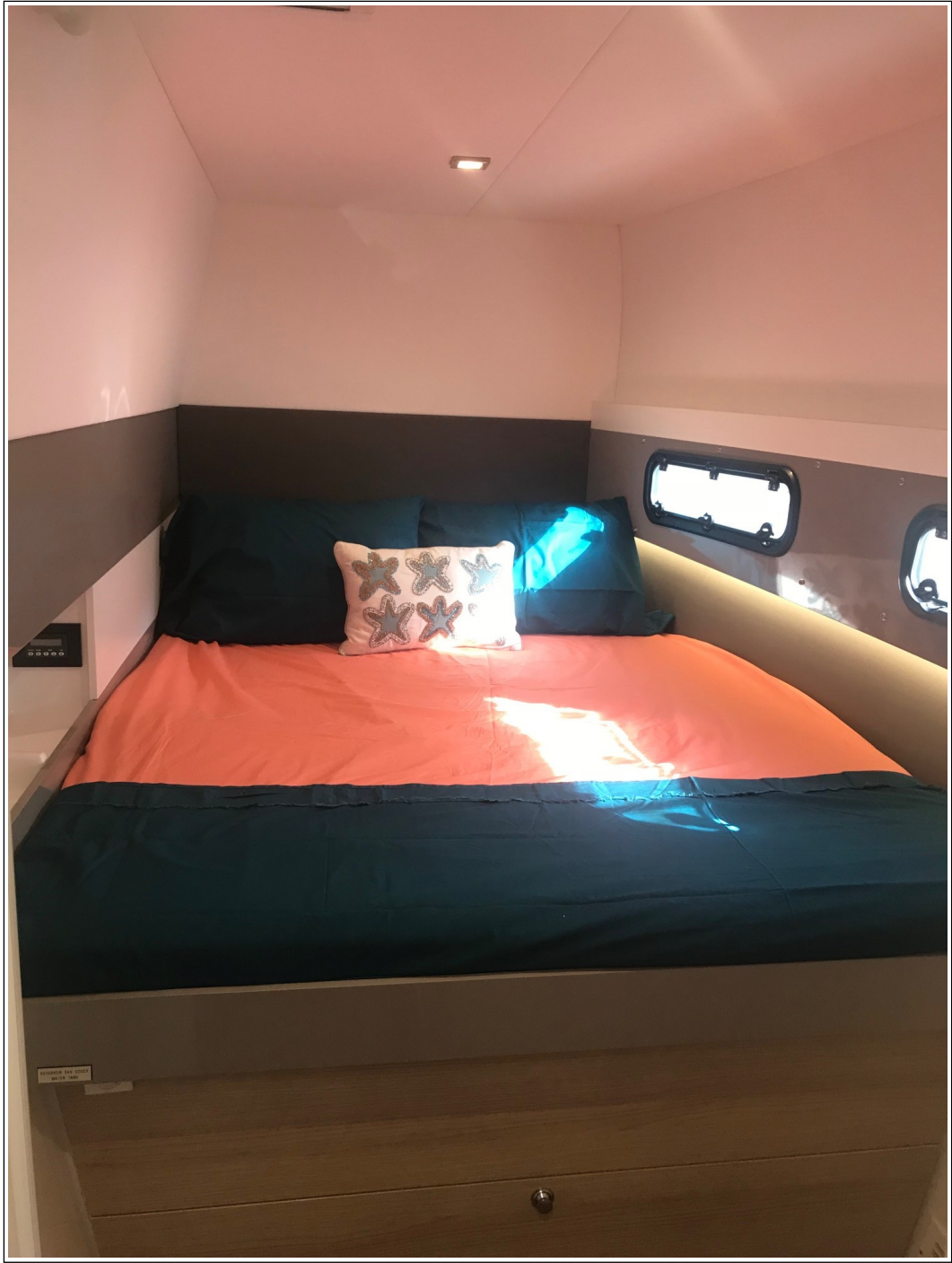






















Disclaimer

The Company offers the details of this vessel in good faith but cannot guarantee or warrant the accuracy of this information nor warrant the condition of the vessel. A buyer should instruct his agents, or his surveyors to investigate such details as the buyer desired validated. This vessel is offered subject to prior sale, price change, or withdrawal without notice. Photos may not properly reflect the current condition of the actual vessel offered for sale. In some cases stock photographs may have been used.

Mechanical Disclaimer

Engine and generator hours are as of the date of the original listing and are a representation of what the listing broker is told by the owner and/or actual reading of the engine hour meters. The broker cannot guarantee the true hours. It is the responsibility of the purchaser and/or his agent to verify engine hours, warranties implied or otherwise and major overhauls as well as all other representations noted on the listing.

Dinghy Disclaimer

All dinghies are considered separate vessels and should have separate titles and documents. There is no guarantee as to the title of the dinghy on this vessel so Buyer accepts that while he may receive the dinghy included in the transaction, he may not receive the proper title to it.