

## 2018 FP Saona 47 QUITE THE CATCH



### Basic Vessel Summary

<b>Manufacturer:</b>	FOUNTAINE PAJOT
<b>Model:</b>	FP Saona 47
<b>Model Year:</b>	2018
<b>Year Built:</b>	2018
<b>Type of Yacht:</b>	Sail
<b>Price:</b>	\$775,000
<b>Condition:</b>	Used
<b>Status:</b>	Sold
<b>Location</b>	Fort Lauderdale Florida (FL)
<b>Duties:</b>	NOT FOR SALE IN US WATER TO USA CITIZENS OR RESIDENTS
<b>Manuf. Length:</b>	46' 0" ( 14.02 m)
<b>Maximum Draft:</b>	4' 2" ( 1.27 m)
<b>Beam:</b>	25' 3" ( 7.70 m)
<b>No. of berths:</b>	7
<b>No. of Heads:</b>	4
<b>Fuel Capacity:</b>	2X124 g
<b>Water Capacity:</b>	185 g
<b>Weight - Displacement:</b>	6.9 ton (13800 lb)
<b>Hull Material:</b>	Fiberglass Reinforced Plastic- FRP
<b>Hull Configuration:</b>	Catamaran
<b>Engine Manufacturer</b>	Volvo Penta
<b>Engine Model</b>	D2-60
<b>Engine Year</b>	2018
<b>Engine Horsepower</b>	60HP
<b>Engine Hours (Port)</b>	2062

<b>Engine Hours (Starboard)</b>	2177
<b>Engine Type</b>	InBoard
<b>Engine Configuration</b>	Triple
<b>Engine Fuel Type</b>	Diesel
<b>Does the boat have a generator?</b>	Yes
<b>Generator Operating Hours</b>	3457
<b>Does a dinghy come with the boat?</b>	Yes
<b>Dinghy Model</b>	Highfield
<b>Dinghy Outboard Manufacturer</b>	Yamaha
<b>Dinghy Outboard Horsepower</b>	20hp

## Full Specification

### Layout & Accommodations

#### Inside Equipment

- Electric Bilge Pump
- Oven: with Cooktop
- Manual Bilge Pump
- Air Conditioning
- Electric Head: With Comodorizer
- Heating: Factory Installed
- Hot Water: Port hull
- Refrigerator: Additional Fridge/Freezer in Cockpit
- Fresh Water Maker: Spectra 30G/H
- Deep Freezer
- Battery Charger

### Deck & Equipment

#### Outside Equipment/Extras

- Cockpit Shower
- Davit(s): Tenderlift / Swim Platform
- Tender: Highfield CL360, Center Console, Yamaha 20HP 4 stroke trim/tilt
- Solar Panel: 3 x 320W
- Liferaft
- Cockpit Cushions
- Cockpit Table: Rear cockpit also has a Blaze Marine BBQ

## Electronics & Navigation

### Electronics

- Depthsounder
- Radar
- Log-Speedometer
- Wind Speed and Direction
- TV Set: Video/TV/Hi Pack from factory
- Navigation Center
- Plotter
- Autopilot
- Radio: Fusion Audio Pack/ Upgraded Bose system
- Compass
- GPS
- Cockpit Speakers
- VHF: VHF handsets at helm and Nav Station

## Electrical, Power & Plumbing

### Electrical Equipment

- Shore Power Inlet: 110V 60Hz
- Generator: 15KW 110V 3457 hours
- Inverter: 2000W

## Sails & Rigging

### Covers

- Bimini Top: Custom Hardtop with full enclosure and night navigational lighting
- Mainsail Cover
- Cockpit Cover: Shades Only, also external white window covers for the saloon

### Rigging

- Steering Wheel
- Electric Winch: 2 x electric and 2 x manual winches

### Sails

- Fully Battened Mainsail
- Gennaker/Cruising Spinnaker: Hardware and all lines only No Sail
- Furling Genoa

## Additional Information

### Manufacturer Provided Description

THIS SAILING CATAMARAN OFFERS THE HIGHEST LEVEL OF COMFORT, STYLE AND

PERFORMANCE, SETTING A NEW STANDARD IN MODERN CRUISING CATAMARANS.

## ELEGANCE AND INDIVIDUALITY

Encompassing the finest signature features of the Fountaine Pajot shipyard, the Saona 47 exudes a striking aura with her distinctive design, strong lines and timeless elegance under sail or at anchor.

## INCOMPARABLE SPACE

The Saona 47 boasts expansive living areas for enhanced cruising pleasure. The expansive cockpit is intelligently designed for entertaining and features an extended aft platform to easily facilitate a host of leisure activities. Immerse yourself in your spectacular surrounds on the foredeck's huge sun lounger, or share in the cruising experience at the helmstation as you unwind on the exceptionally large 9m<sup>2</sup> lounge deck.

The exquisitely crafted saloon is bathed in bright natural light, and her comprehensively equipped galley has an island and an abundance of storage for extended cruising. This is a 3-cabin Owner version featuring a decadent master suite that occupies an entire hull complete with a luxurious ensuite with Italian-style shower, with two generous guest cabins in the port hull that each enjoy their own exclusive ensuites. This Saona 47 also has the added convenient crew quarter in the forepeak.

## PERFORMANCE AND AGILITY

The Saona 47 cruising catamaran has been meticulously designed to offer intuitive responsiveness at the wheel and unparalleled performance in all conditions. Her optimised weight-to-volume ratio delivers exceptional balance and stability for an unforgettable sailing experience at any speed.

The Saona 47 – a dynamic yacht delivering cruising pleasures designed to be shared!

Image Gallery















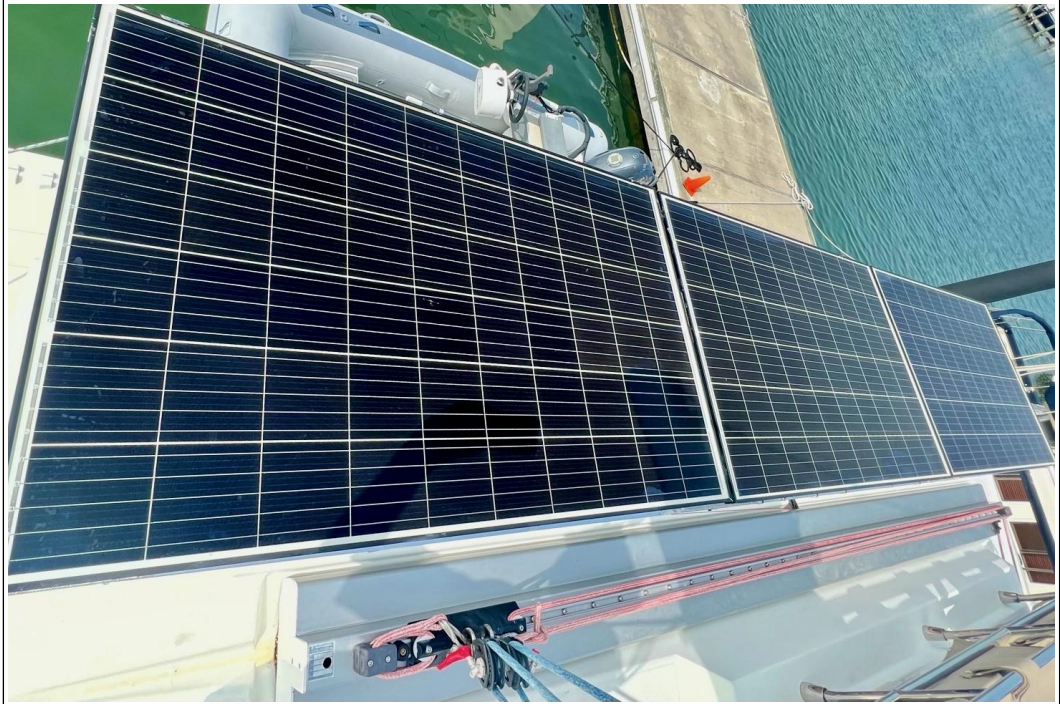














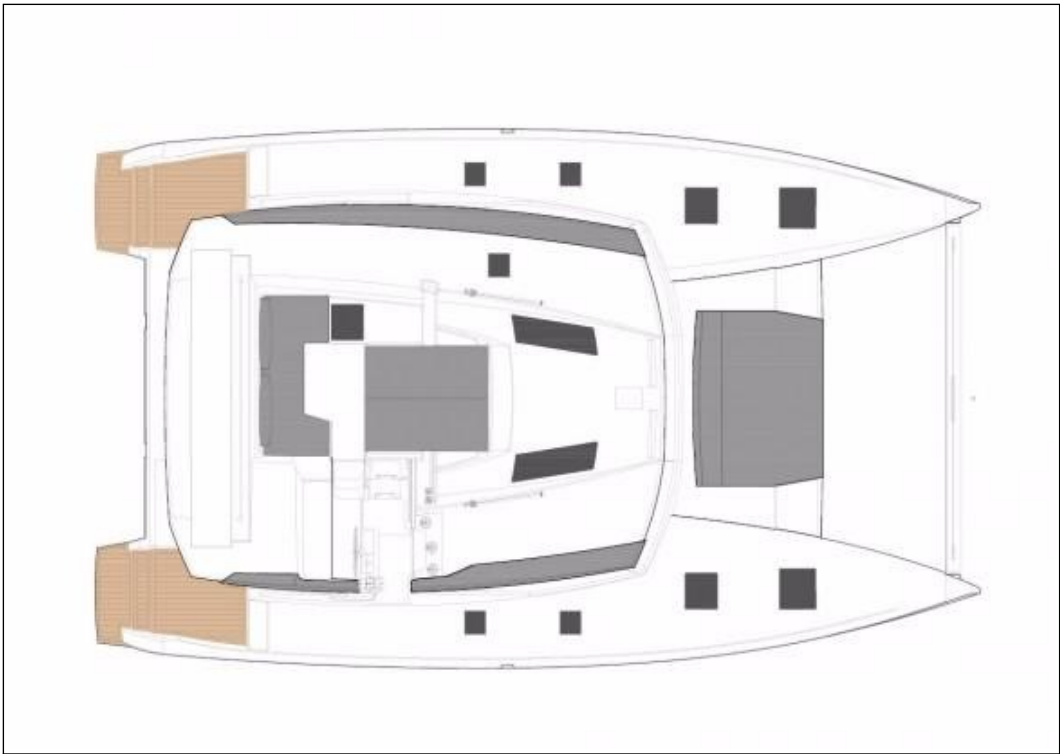


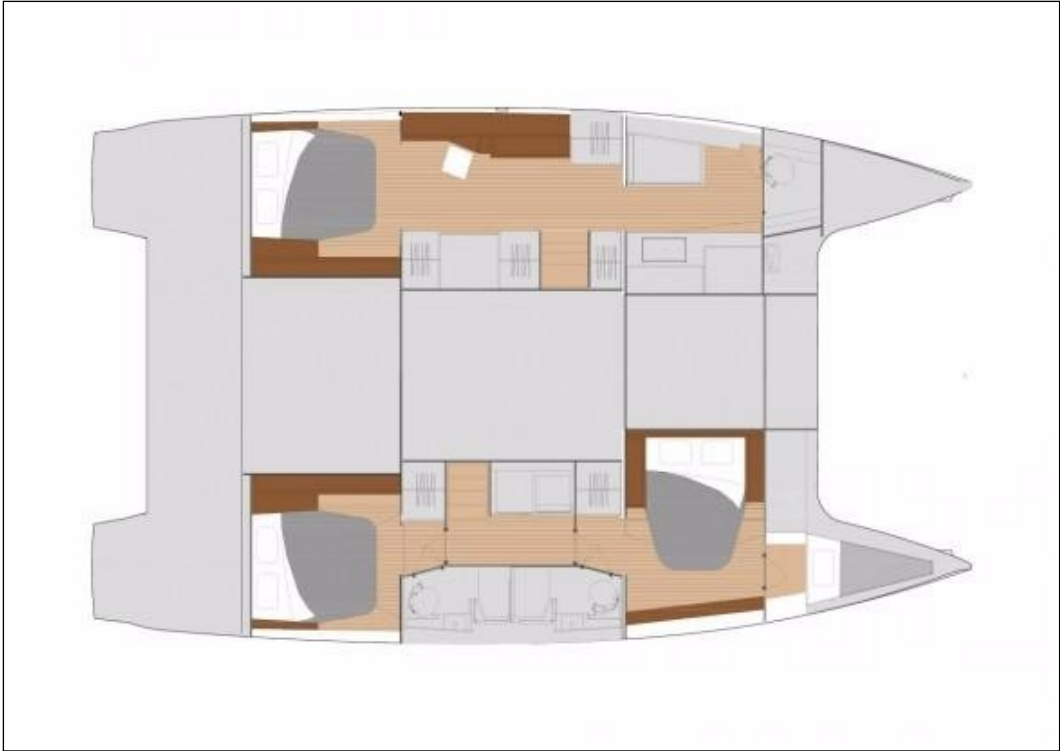




















### **Disclaimer**

The Company offers the details of this vessel in good faith but cannot guarantee or warrant the accuracy of this information nor warrant the condition of the vessel. A buyer should instruct his agents, or his surveyors to investigate such details as the buyer desired validated. This vessel is offered subject to prior sale, price change, or withdrawal without notice. Photos may not properly reflect the current condition of the actual vessel offered for sale. In some cases stock photographs may have been used.

THIS VESSEL IS NOT FOR SALE IN US WATER TO USA CITIZENS OR RESIDENTS.

**Mechanical Disclaimer**

Engine and generator hours are as of the date of the original listing and are a representation of what the listing broker is told by the owner and/or actual reading of the engine hour meters. The broker cannot guarantee the true hours. It is the responsibility of the purchaser and/or his agent to verify engine hours, warranties implied or otherwise and major overhauls as well as all other representations noted on the listing.

**Dinghy Disclaimer**

All dinghies are considered separate vessels and should have separate titles and documents. There is no guarantee as to the title of the dinghy on this vessel so Buyer accepts that while he may receive the dinghy included in the transaction, he may not receive the proper title to it.