

Catamaran for Sale
[2010 Summerland 40 KAMA V](#)



Basic Vessel Summary

Manufacturer:	FOUNTAIN PAJOT
Model:	Summerland 40
Model Year:	2010
Year Built:	2009
Type of Yacht:	Power
Price:	\$359,000
Condition:	Used
Status:	Acceptance of Vessel
Location	Albany New York (NY)
Duties:	NOT FOR SALE IN US WATER TO USA CITIZENS OR RESIDENTS
Manuf. Length:	39' 5" (12.01 m)
Maximum Draft:	3' 5" (1.04 m)
Beam:	17' 10" (5.44 m)
Fuel Capacity:	2x185 g
Water Capacity:	150 g
Weight - Displacement:	12 ton (24000 lb)
Hull Material:	Fiberglass Reinforced Plastic- FRP
Hull Configuration:	Catamaran
Engine Manufacturer	Volvo Penta 190s
Engine Model	D3 Penta 190
Engine Hours (Port)	1950
Engine Hours (Starboard)	1950

Full Specification

Layout & Accommodations

1 owner's suite + bathroom to starboard 2 Guest cabins + 1 bathroom to port

MASTER CABIN: Located in the Starbd Hull – the comfortable Owner's cabin has a transverse berth, with a view of the sea. There is also a private bathroom with head and shower

GUEST CABINS: To Port side are two fine guest cabins separated by a bathroom
Grand Large Package: Cabin Curtains, deck shower, VHF ant. Radio/CD MP3 +iPod connection player, seat cushions, Fly bridge protection, Solarium Mattress, holding tank, Auto Bilge pump, Mooring lines and fenders, Electric Windlass
Salon Table convertible to berth

Sleeping space

Double bed 1,60 x 2,00 m approx. with access on either side (island bed)

Stowage space under the bed

1 Bookshelf for bed head

Hanging space + storage volume in fore peak

1 wooden corner desk

2 coat hooks

Ventilation via 1 deck hatch and 1 hull porthole

Big non-opening outer-facing picture window with panoramic view

Curtains on non-opening picture window and porthole

Bathroom area

Access through wooden door from passageway

Counter top with built-in washbasin and mirror

Bathroom accessories (toilet tissue holder + towel rail)

Storage shelf

Hot and cold water, mixer tap, and built-in shower

Hand-operated marine toilet (large) with holding tank

Ventilation via 1 porthole

Main lighting via watertight spotlights

Galley

SALON: Salon is well lit with large windows and 360 degree views

Large U-shaped dinette and seating area to Port

Easy access to aft deck-

Saloon accessible through sliding glass door

Panoramic view through non-opening picture windows + 2 side picture windows

Natural ventilation via 1 front-opening hatch on top of roof + 2 side hatches

Dining area

1 bench seating for 8 people

1 wooden table for 8 people

Standard upholstery according to Millésime

Cupboard for storage

All LED spotlighting

Lpg gas to cooktop with propane control

Ice maker –

12v refrigerator & freezer

SS sinks w/draining board

Lots of storage cabinets below countertop

Additional storage cabinets above

Galley with working top

1 vertically-accessed bin

Hot and cold pressurized water, mixer tap

1 stainless steel stove, 4 strong power gas burners

1 stainless steel gas oven

1-130L Fridge

Cupboard + shelves + drawers

Ventilation via 1 porthole above cooking hob

LED spotlighting

Deck & Equipment

EXTERIOR:

The abundant deck space needs to be seen to be appreciated – there is no mono hull vessel in this size range that can compare.

First there is the aft boarding or swim platform that makes it easy to board from a dinghy or from the water. This leads to a wide and spacious aft cockpit with built in seating and access to the upper flybridge or side and forward decks. There is complete walk around access to all parts of the deck and a forward sun deck area.

The Bridge deck is also quite spacious with loads of seating space, an aft sun lounge and forward helm area that seats 2

INTERIOR:

The vessels are entered through wide sliding glass doors that lead to a wide and spacious Salon. To Starbd is the U-shaped Galley, and to Port a seating or dining area.

Storage cabinetry separates the aft part of the Salon from the forward area with the lower steering station.

A stairway on Port side of the steering station leads to a lower level with two guest cabins – Each with double berth and storage closets. A full head w/shower separates these cabins, and also serves as the day head.

A Stairway to Starbd leads to the private owner's suite with Queen berth facing athwartships and easy access from either side. There is also an owners head w/shower and generous storage closets and lockers

Large windows offer abundant light to all areas.

Flybridge-

UPPER HELM STATION

Full Bimini w/ Stainless Steel foldable frame – Dodger and Side Isenglass enclosure

Flybridge cushions

Access via closed staircase with an Altuglass hatch

Area transformable sun bath in seats with backrest

1x6 seating bench with cushions

2 carry-goblets

Double helmsman's seat with backrest

Waterproof exterior 12 V outlet

Large instrument panel

Dralon protective cover for instrument panel

Flying bridge protected by Altuglass windshield

1 steering compass

Navigation lights

Fold-down mast with mooring lights

Flagpole

Lower Helm Station-

Inside levers

Stainless steel wheel

Pilot's seat + separate seat

1 Interior 12V outlet / 1 Interior 220V outlet

Control panel with navigation instruments and twin engine controls

LED spotlighting

Cockpit-

1x4 seated bench with backrest and stowage locker

1 staircase for access to the flying bridge

Stowage locker under staircase
Access to the aft areas
Stowage locker under the flying bridge
1 waterproof 12V outlet
Main lighting with watertight spotlights

HULL and DECK
Electric Windlass
Anchor w/ 200 ft chain

Electronics & Navigation

Garmin Electronics:
12 " touch screen, auto pilot, engine mgt, vhf, cd player and radar with back up Furuno gps on lower helm.
9" chart plotter, engine mgmt, auto pilot, radar.

Inverter – Xantrex 2000 – and 40 amp Victron charger
Speed and depth sounder

Electrical, Power & Plumbing

Electrical:
Xantrex 2000 inverter (2021)
280 w solar
Cranking battery to stbd (2021)
6x6v cranking/house bank to port (2021)
Quick HWT
Heating system (while running engines) to stbd.
Electrical

Electrical system w/Paneltronics 4308 breaker pane

9 x 110 electric outlets

30 amp 110v 50 ft shore power cord
12V-power circuit
12V-electricity distribution
Each set of batteries recharged via engine alternator
Back-up manual connection between both sets of batteries

Remote control battery trip switch in saloon
Overall circuit protection via trip switch
Electronics /
Trip switch protections located in difference watertight lockers
1 Radio/CD MP3
2 speakers inside + 2 speakers on the fly bridge

Tanks:

Fuel: 2 x 700 ltrs (185 gals) 1,100 NM range at 1800 rpm
Fresh water: 600 ltrs (150 gals)
Black water: 2x50 ltrs (13 gals) + gravity discharge valves as well as pump out capability.

Engine & Mechanical

Propulsion:

2x D3 Volvo Penta 190s with 1950 hrs
Direct drives
Top speed: 20kts +
Econo speed: 1,000 + NM at 1950 rpm

Engines with electrical throttles
Direct shaft drive behind protecting keels
2 four-blade propellers
Engine cooled via heat exchanger
Engine compartment ventilation natural intake of air + mechanical extraction of air
Complete control panels and dual engine controls at helming station and on the flying bridge
220v water heater

Additional Information

Other

2018 Cadet 270 (9') Zodiac
dinghy
2018 4 cycle 9.9 Yamaha outboard

Recent repairs-maintenance- upgrades:

New VHF antenna 2021
2x PSS shaft seals 2021
Xantrex 2000 inverter 2021
New cockpit & fly upholstery 2021
Seadeck on fly 2021

Cockpit and fly canvass enclosures 2021

Electric head in master 2022

4x Top and bottom rudder shaft seals 2022

2x Cutlass bearings 2022

2x Custom made rudder tiller arms 2022.

Custom made windlass support plate 2023

New starter and alternator to port 2022. Spare starter and alternator in stock.

6x 6 v battery cranking/house bank to port 2022

Kama has cruised the Caribbean and the Bahamas since December 2019 and spent the 2020 and 21 seasons in fresh water: St. Lawrence River in Canada and Lake Champlain.

COMMENTS

Low fuel consumption

The Fountaine Pajot's outstandingly low fuel consumption is a primary attraction for many buyers who recognize the savings represented by the vessels' long range. The boat offers a minimum of 40 percent reduction in fuel consumption when compared to the performance of a similarly-sized mono-hull.

The reduced drag created by the two hulls plus the efficient wave-piercing action contributes to greatly reduced rates of consumption, and extended range – up to one thousand miles with standard fuel tanks.

The FP Power Cats are renowned for their superior performance in challenging conditions, while maintaining excellent stability and comfort while underway. Higher speeds are achievable in tough conditions due to the boat's semi-displacement hull design. More of the hull remains in the water at higher speeds, softening the ride and reducing stress on the hull from wave impact.

FP Power Cats offer generous freeboard with reinforced hulls and bows to handle the toughest offshore conditions. The hull design offers an impressively dry deck at sea and a stable ride with minimal bounce and roll in dangerous and uncomfortable conditions.

Unlike many of its competitors, these vessels are pleasantly quiet, with engines housed with their own dedicated access.

Protection and visibility Each of the FP Power Cat models enjoys excellent protection from the natural elements. The 360 degree vision from the flybridge is also complemented by panoramic views from the interior cockpit, creating a light, ambient and safe experience particularly during extended passages.

Ergonomic and safe design

All of The FP Power Cats deck surfaces have been designed to be kept clear of obstructions, creating the safest environment for both cruising and relaxing at anchor. From boarding on the float-through transom, moving into the spacious and ergonomic cockpit, on to the square and the foredeck, moving about a Motor Yachts is a safe and easy experience. The boats are

also equipped with superior quality steel stanchions and belting, providing optimal security for moving about on deck.

Unsinkability and beach ability

FP Power Cats have been designed to sit on their hulls without any damage to her propellers, shafts and rudders due to fixed skegs. These skegs are also designed to protect the propellers, shafts and rudders and preserve the safety of the vessel in the event of an impact at sea. Twin engines in separate hulls offer peace of mind in the event of a hull taking on water due to grounding or a collision. This is a feature not possible in a mono-hull without major engineering works.

4. Innovative, Spacious and Thoughtful Designs

Separation of living areas Each Power Cat has been designed to separate the social and private areas for optimal space and serenity. Socializing and entertaining can be enjoyed in the spacious saloon and galley, which feature panoramic views, quality furnishings, abundant storage and easy integration of lounge and cockpit areas. The main decks are designed on one level so no steps up or down are required for entry from the cockpit to the main saloon.

Tranquil and private cabins

Cabins for the owner and crew are very private due to the twin hulls, with no single bulkheads required between the cabins. Fore and aft cabin arrangements can offer true three or four double cabin versions without compromising space and storage. On every model, the cabins enjoy generous dimensions, great headroom, wide passageways, and are situated well away from the engine rooms, ensuring they are quiet and fume-free retreats. The cabins feature excellent ventilation systems and natural lighting, courtesy of the generous portholes. There is also spacious access to the large beds with the benefits of en-suite bathrooms.

Maestro version (3 Cabin Owner's version)

Offering the ultimate in privacy for both owners and guests, the Maestro version is offered on all models in the Power cat range. This design, which dedicates an entire hull for Owner's private use, is the result of extensive research and development in conjunction with consultants, architects and manufacturers.

Passageways

Unlike many catamarans, FP Power Cat's corridors have been designed to maximize width and height in the interior passageways, and stair dimensions have also been set at a safe and comfortable level to suit both adults and children.

5. Manufactured to highest standards

Fixed fins These vessels are fitted with fixed fins to maximize comfort and safety. In the event of an impact or beaching, the fixed fins serve to protect the propellers, shaft and rudders, and they completely seal and preserve the integrity of the vessel. The benefits of fixed fins include total security, convenience for maintenance, and greater flexibility to explore and anchor in more shallow waters.

EXCLUSIONS

: Owner's personal effects

UPGRADES – ITEMS OF INTEREST

Dinghy Davits (2)

Teak cockpit table

Teak cockpit floor – transom& cockpit steps

Salon table convertible to berth

Image Gallery















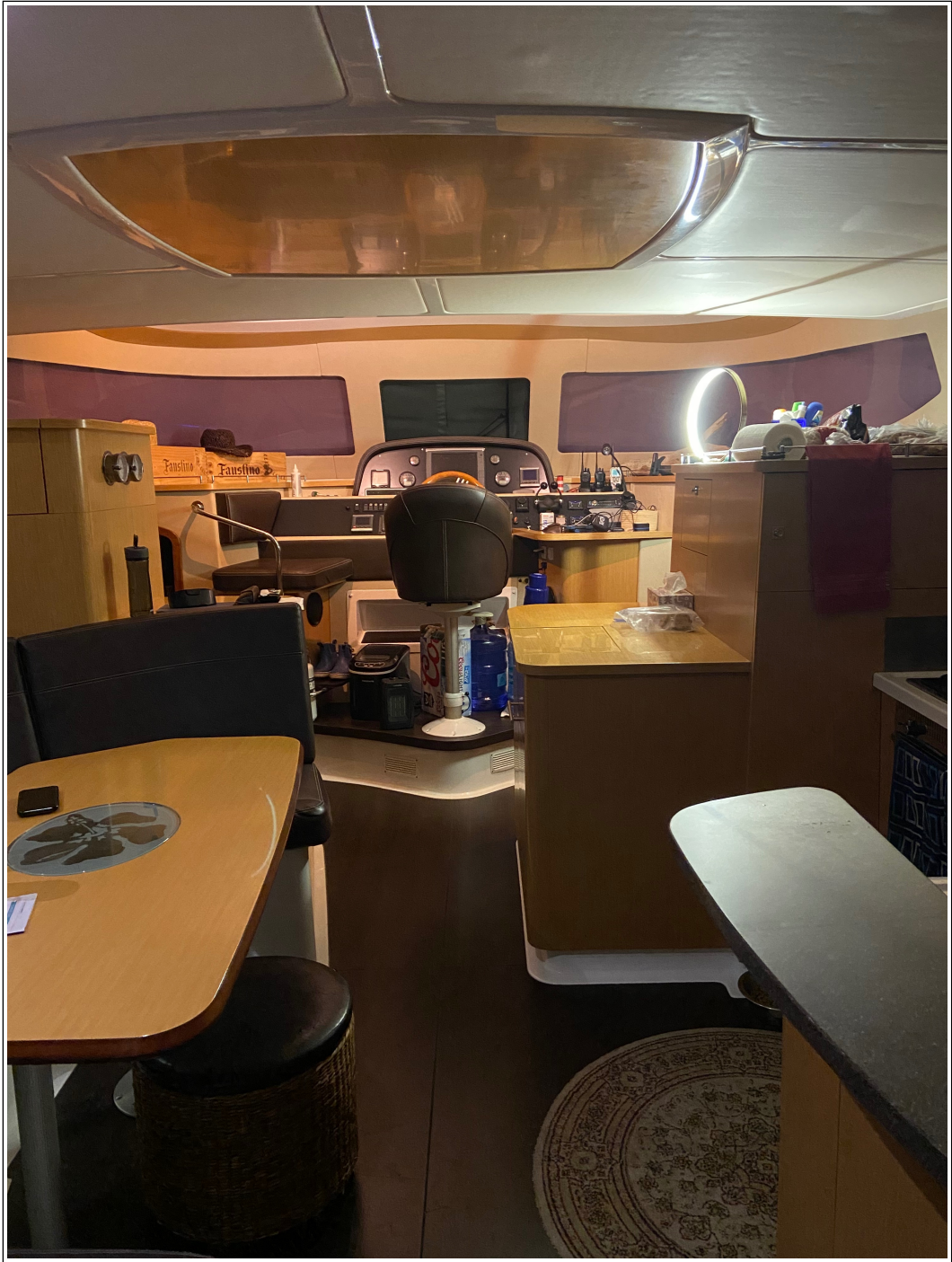






























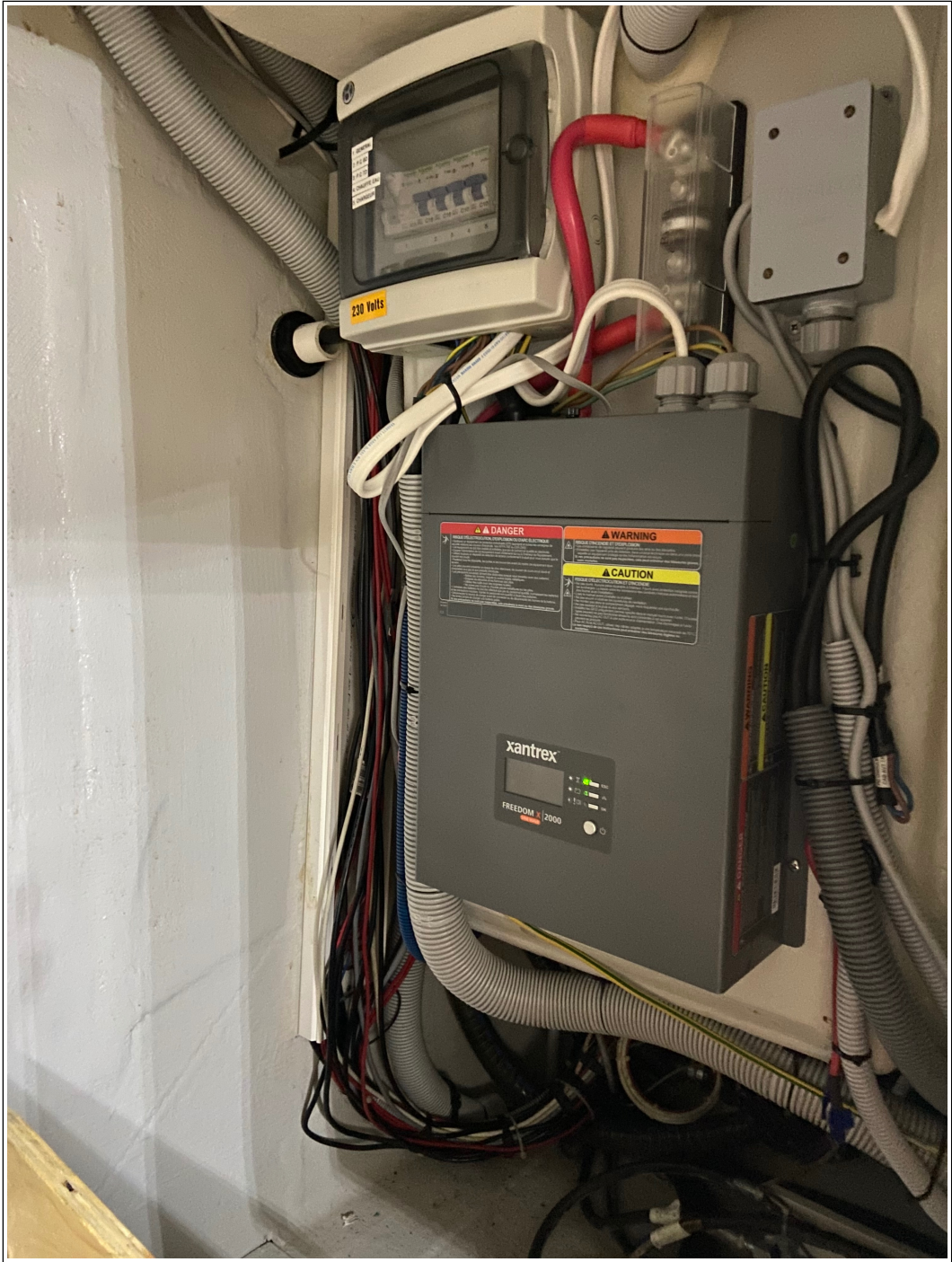


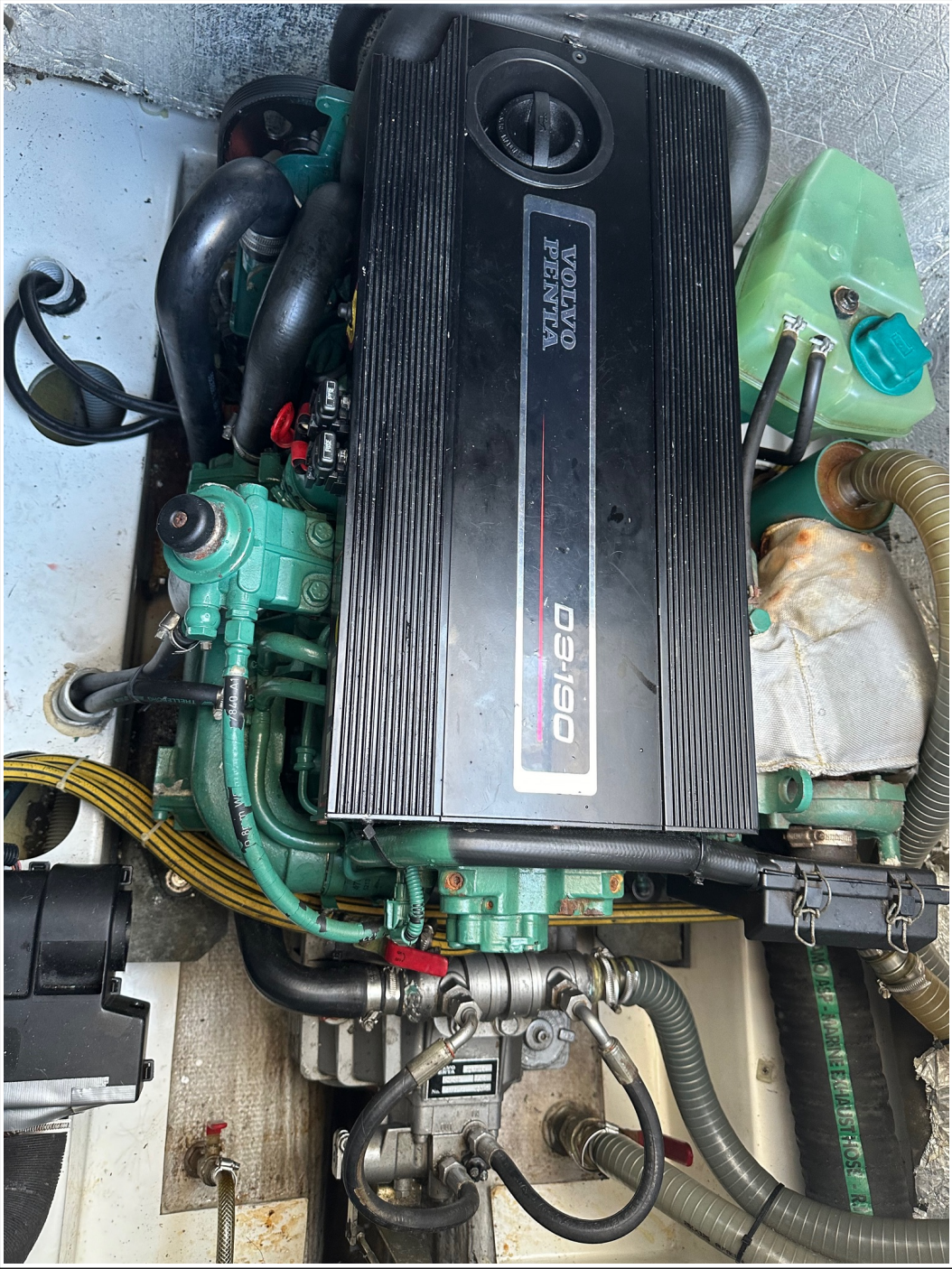
- CANADA 2890 km / 1796 mi
- 7846 km / 4875 mi MARRUECOS
- ALASKA 5628 km / 3497 mi
- XCARET 0 km / 0 mi
- 33 km / 20 mi XEL HÁ
- HAWAII 7395 km / 4597 mi
- 7535 km / 4682 mi PORTUGAL
- GRECIA 10423 km / 6497 mi
- 2277 km / 1415 mi COLOMBIA
- 1385 km / 861 mi KENIA
- 6208 km / 3857 mi CHILE
- 12335 km / 7678 mi
- 2415 km / 1501 mi
- XPLOR 3 km / 2 mi















Disclaimer

The Company offers the details of this vessel in good faith but cannot guarantee or warrant the accuracy of this information nor warrant the condition of the vessel. A buyer should instruct his agents, or his surveyors to investigate such details as the buyer desired validated. This vessel is offered subject to prior sale, price change, or withdrawal without notice. Photos may not properly reflect the current condition of the actual vessel offered for sale. In some cases stock photographs may have been used.

THIS VESSEL IS NOT FOR SALE IN US WATER TO USA CITIZENS OR RESIDENTS.

Mechanical Disclaimer

Engine and generator hours are as of the date of the original listing and are a representation of what the listing broker is told by the owner and/or actual reading of the engine hour meters. The broker cannot guarantee the true hours. It is the responsibility of the purchaser and/or his agent to verify engine hours, warranties implied or otherwise and major overhauls as well as all other representations noted on the listing.

Dinghy Disclaimer

All dinghies are considered separate vessels and should have separate titles and documents. There is no guarantee as to the title of the dinghy on this vessel so Buyer accepts that while he may receive the dinghy included in the transaction, he may not receive the proper title to it.