

## 2018 Nautitech 46 ABILITY



### Basic Vessel Summary

<b>Manufacturer:</b>	NAUTITECH
<b>Model:</b>	Nautitech 46
<b>Model Year:</b>	2018
<b>Type of Yacht:</b>	Sail
<b>Price:</b>	\$699,000
<b>Condition:</b>	Used
<b>Status:</b>	Catamaran for Sale
<b>Location</b>	Annapolis Maryland (MD)
<b>Manuf. Length:</b>	46' 0" ( 14.02 m)
<b>Maximum Draft:</b>	4' 8" ( 1.42 m)
<b>Minimum Draft:</b>	4' 8" ( 1.42 m)
<b>Beam:</b>	24' 7" ( 7.49 m)
<b>LWL:</b>	45' ( 13.72 m)
<b>Mast Height Clearance:</b>	78' ( 23.77 m)
<b>No. of Cabins:</b>	3

<b>No. of Heads:</b>	3
<b>Fuel Capacity:</b>	80 g
<b>Water Capacity:</b>	80 g
<b>Holding tank:</b>	24gal
<b>Cruise speed:</b>	10kn
<b>Weight - Displacement:</b>	12 ton (24000 lb)
<b>Hull Material:</b>	Fiberglass Reinforced Plastic- FRP
<b>Hull Configuration:</b>	Catamaran
<b>Engine Manufacturer</b>	Volvo
<b>Engine Model</b>	D2-50
<b>Engine Year</b>	2018
<b>Engine Horsepower</b>	50hp
<b>Engine Hours (Port)</b>	393
<b>Engine Hours (Starboard)</b>	402
<b>Engine Type</b>	InBoard
<b>Engine Configuration</b>	Twin
<b>Engine Fuel Type</b>	Diesel

### Boat Description:

ABILITY is new to the market, lightly used and never chartered. Her three cabin arrangement offers generous space for all guests; the flybridge is the largest and most accommodating of any cats in this range. With low hours, an innovative, cutting-edge electrical system, new sails and excellent maintenance, ABILITY is the best offering among all of the late model, flybridge catamarans.

## Full Specification

### Layout & Accommodations

#### Accommodations / Walkthrough

ABILITY is the desirable Owner's version with three cabins down and combination galley / main salon on the main deck. To starboard are two cabins, each with a private head and a shared shower between. The owner's hull is large and open with large private head and shower.

Main salon is bright and open with abundant social space for the entire ship's company. The aft deck is where much of the cruising lifestyle is enjoyed and, with side curtains, can be enclosed or left wide open. Varnished dining table seats six.

The flybridge has a hard top bimini with 5 of the 7 solar panels mounted above. The flybridge also includes the single centerline helm with excellent sight-lines, Aft of the flybridge helm is

a comfortable, L shaped seating in the lounge area, a great place to gather and enjoy the views.. A varnished teak table provides another dining option. A third refrigerator is also on the flybridge.

## Salon

The salon/galley is a multi-purpose, social space with nav station, abundant seating for all and unobstructed views.

## Galley

### Galley

Galley is to port on the main deck, Components include:

Three Vitrifigo fridge drawers (one on FB)

Two Vitrifigo freezer drawers

In counter fridge / cooler

Double stainless sink with rinsing section.

Eno LPG stovetop

Panasonic Genius microwave / convection oven

Electric toaster and kettle

Vitrifigo icemaker

Full complement of galleyware with servings for six

## Deck & Equipment

### Deck and Hull-

Hardtop

Carbon helm wheel

Rocka 33KG anchor

Bridle and chain hook

225' 3/8" chain

Stern anchor w/ rode

Docklines / 8 fenders

Offshore raft / PFD's

Flex-I-Fold props with PropSpeed

Brackets for dive tanks

Transom shower

## Electronics & Navigation

Navigation and Electronics-

All Brooks and Gatehouse

Zeus 3 plotter radar

VHF

Sailing instruments

EPIRB

Fusion Stereo w/ Bluetooth and Sirius FM

## Electrical, Power & Plumbing

Electrical Equipment-

Electrical system on ABILITY is the system of the future, innovative and exceptionally efficient. Polar Power Supra 48VDC diesel generator (smoother and quieter than an AC generator) charges large lithium batteries directly and provides the inverter with whatever additional power is needed.

Of note, with appropriate sun exposure, the silent solar array will power the main salon air conditioning while maintaining a 100% charge.

Seven Solar Panels at 375W each, for 2625 Watts

Victron Energy MPPT Lynx Power 1000

Smart Solar Charge Controller MPPT 150 / 100

Victron Energy R5 Smart Solar 48V / 6000 amp inverter

Victron Autotransformer 120 / 240/ 100 amp

8kw genset

## Engine & Mechanical

Engine and Mechanical Equipment-

Main engines: Volvo D2-50 with saildrive, 400 hours.

Air conditioning: Frigomar 4 units – 40,000 BTU total

7,000 BTU in guest cabins (2)

10,000 BTU in Owner's cabin

16,000 BTU in main salon

Dessalator Duo (12VDC / 110VAC) watermaker – 100 litres per hour

Splendide stainless washer / dryer combo

## Sails & Rigging

Sails / Rigging-

Selden mast & boom

In-mast furling mainsail 2022

Roller furling Jib 2022

Tradewind sail (lightly used)

Lewmar electric winch

Much new running rigging

## Additional Information

### Remarks

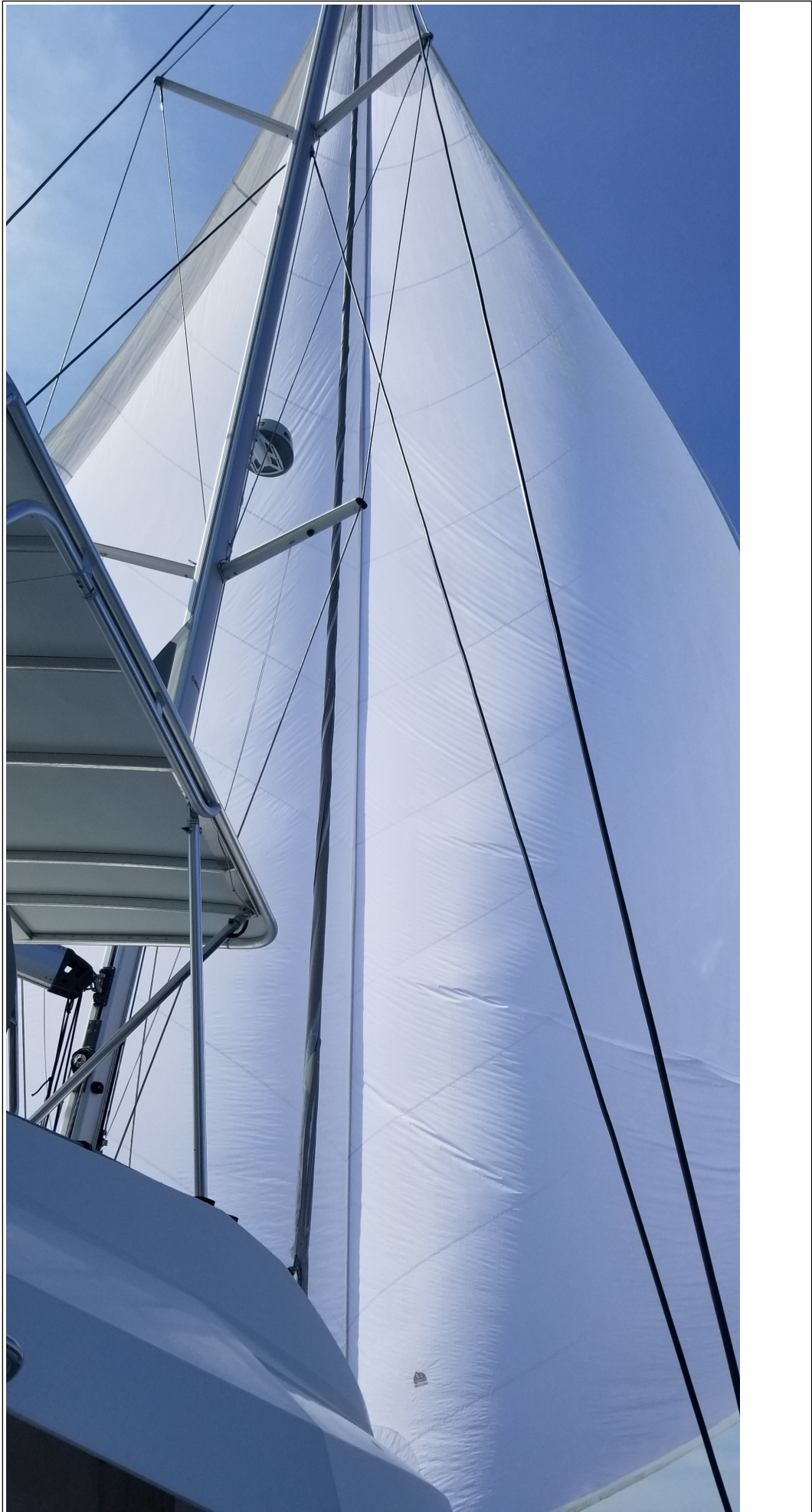
The Nautitech 46 Fly is a performance-oriented catamaran. She has a foam core construction and is almost 10k pounds lighter than many other catamarans in this size range. Many popular brands in this range emphasize comfort. We urge any interested catamaran buyers to consider weight and keel design while shopping. Performance of the Nautitech 46 under sail will not disappoint.

ABILITY has been lightly used and never chartered. Her three cabin arrangement offers generous space for all guests; the flybridge is the largest and most accommodating of any cats in this range.

With low hours, an innovative, cutting-edge electrical system, new sails and excellent maintenance, ABILITY is the best offering among all of the late model, flybridge catamarans.

**Image Gallery**















VIC-PW 508808

**victron energy**  
BLUE POWER

<b>BATTERY</b> 100% idle 0W 56.8V 0.0A	<b>SYSTEM</b> 48V Off	<b>STATUS</b> 13:29 no alarms
<b>AC LOADS</b> --	<b>PV CHARGER</b> 19W	<b>DC SYSTEM</b> 19W from battery

color control

**victron energy**  
BLUE POWER

**charger**

- mains on
- bulk
- absorption
- float

charger only   off   on

**Inverter**

- inverter on
- overload
- low battery
- temperature

current limit

multi control

TANK

TANK

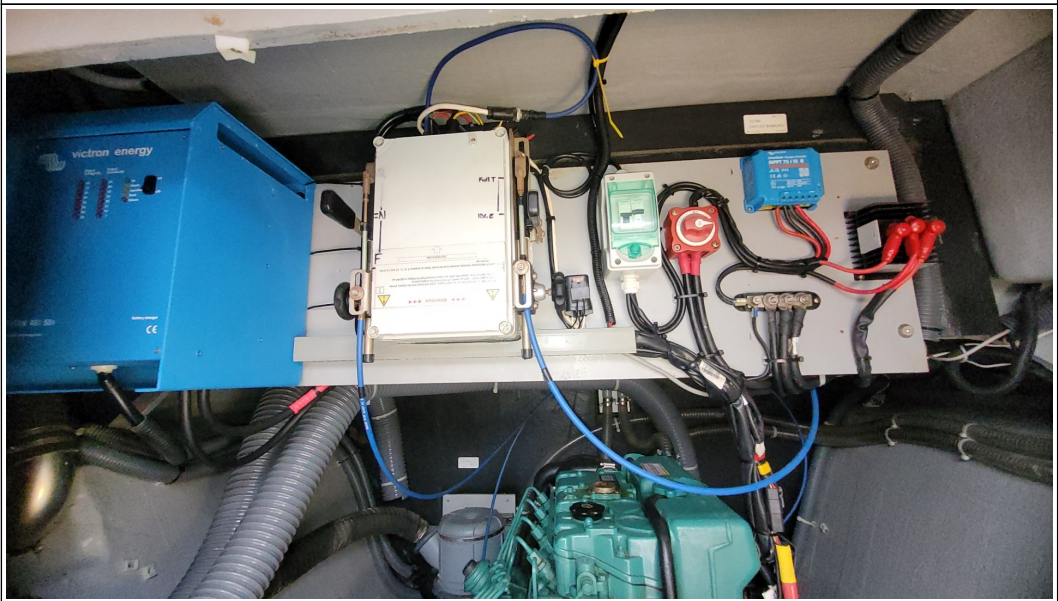
**victron energy**

100% 12V BATTERY MONITOR

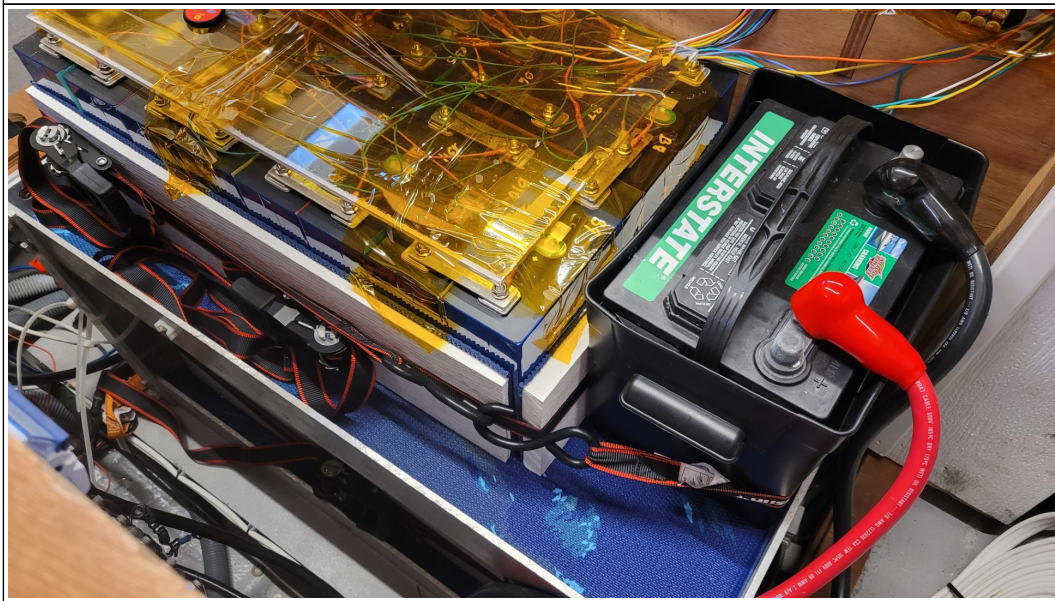
0 80 160




















 **victron energy**

Output Voltage (V)	Output Current (A)
60	56
58	50
56	42
54	35
52	28
50	21
48	14
46	7

-  on
-  boost
-  equalize
-  float
-  failure

on  
 off

**TITAN 48 VOLT 50 AMP**  
[www.victronenergy.com](http://www.victronenergy.com)

Battery charger





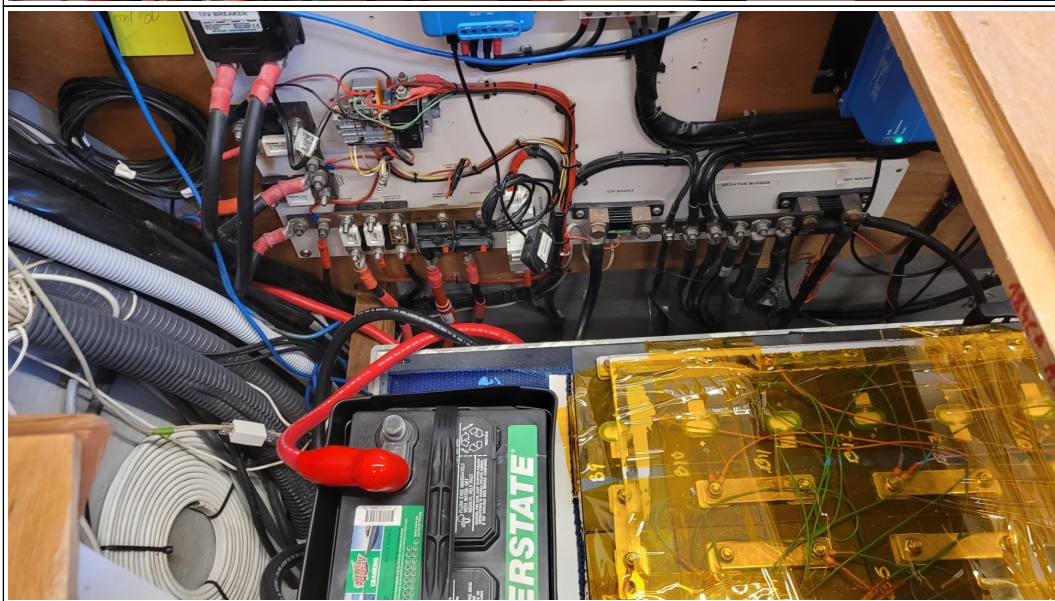
















Global FIX  
V4  
406 GPS SATELLITE EPIRB

CAUTION  
DO NOT REMOVE  
THIS LABEL

1. MANUAL ACTIVATION  
SLIDE CLEAR COVER FROM LEFT  
TO REARM. WITHDRAW BATTERY

SLIDE  
MANUAL ACTIVATION

Model: 406-001-001  
Country: USA  
Model: 406-001-001

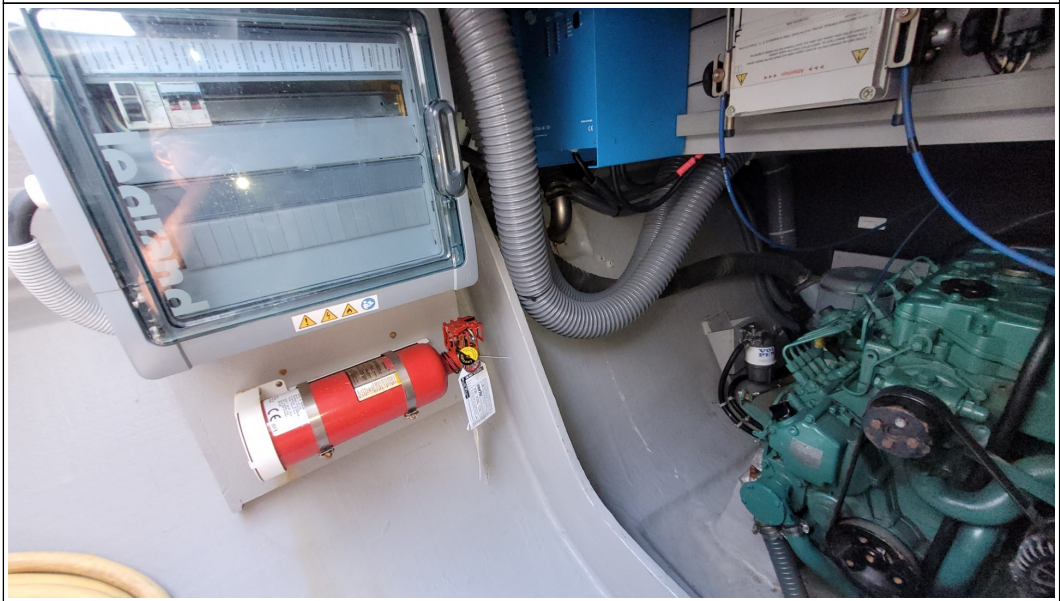
E  
P  
I  
R  
B

ACR

ACR Electronics, Inc.  
5757 Ravenswood Road  
Ft. Lauderdale, FL 33312 USA

PUSH







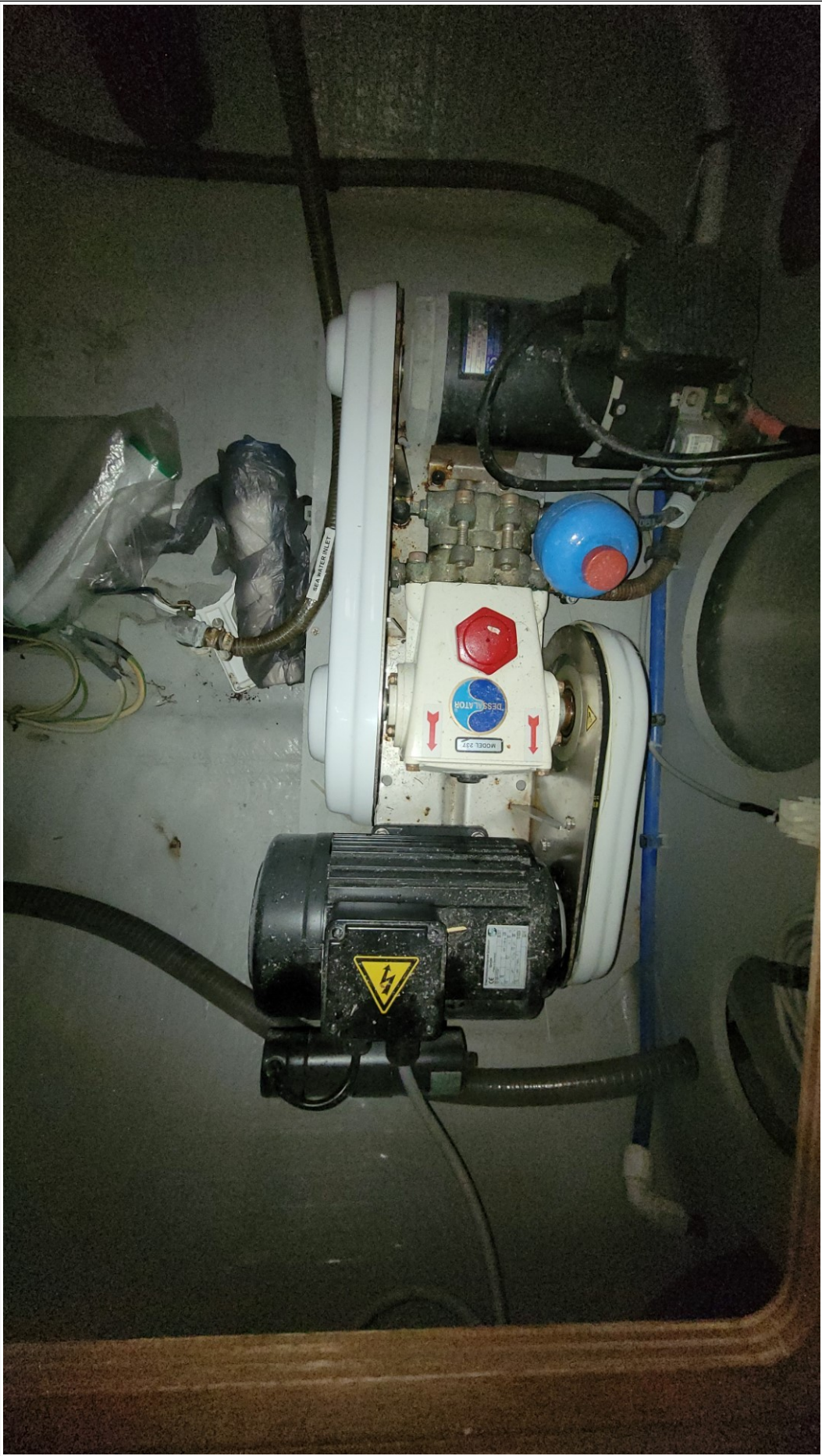
























USER PW 0000

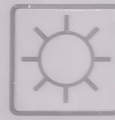
PW 8282

 POLAR  
POWER<sub>INC.</sub>

SUPRA series

Volt: 54.47 AMP: 0  
Stopped / Manual  
RPM: 0000 Hours: 00463  
Last KWh: 6

DC GENERATOR CONTROLLER



B&G

B&G

<10





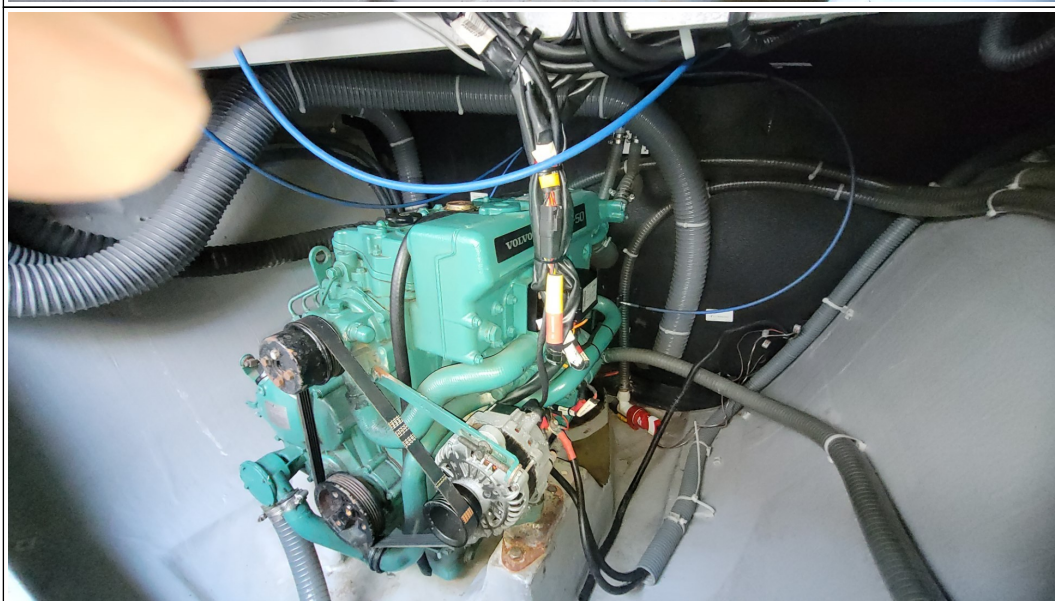
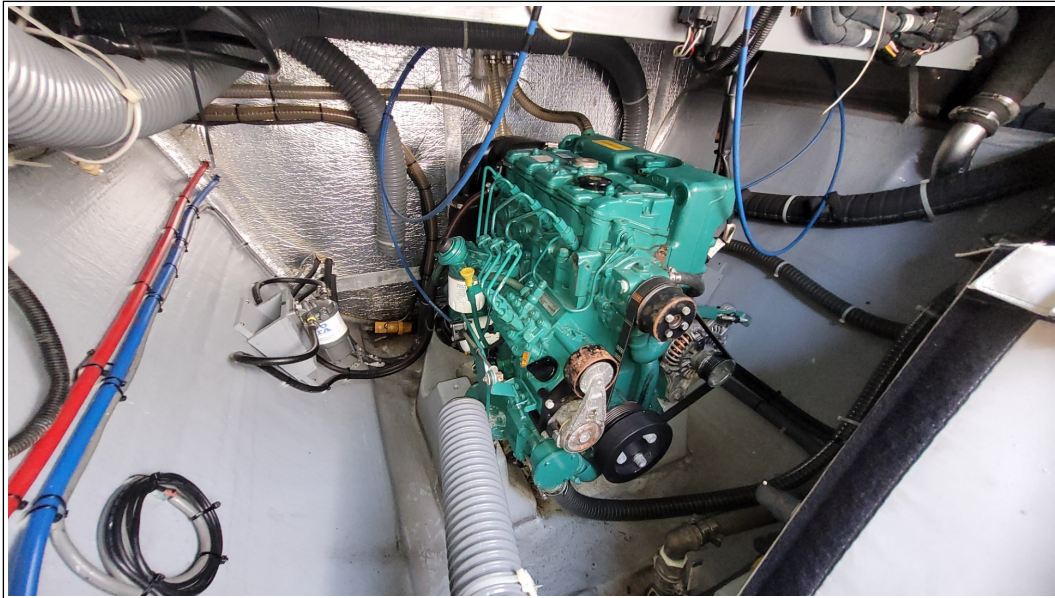












**Disclaimer**

The Company offers the details of this vessel in good faith but cannot guarantee or warrant the accuracy of this information nor warrant the condition of the vessel. A buyer should instruct his agents, or his surveyors to investigate such details as the buyer desired validated. This vessel is offered subject to prior sale, price change, or withdrawal without notice. Photos may not properly reflect the current condition of the actual vessel offered for sale. In some cases stock photographs may have been used.

Notes: This listing is courtesy of the BoatWizard MLS and may be centrally listed with another broker. It is offered as a convenience by this broker/dealer to its clients and is not intended to convey representation of a particular vessel.

### **Mechanical Disclaimer**

Engine and generator hours are as of the date of the original listing and are a representation of what the listing broker is told by the owner and/or actual reading of the engine hour meters. The broker cannot guarantee the true hours. It is the responsibility of the purchaser and/or his agent to verify engine hours, warranties implied or otherwise and major overhauls as well as all other representations noted on the listing.

### **Dinghy Disclaimer**

All dinghies are considered separate vessels and should have separate titles and documents. There is no guarantee as to the title of the dinghy on this vessel so Buyer accepts that while he may receive the dinghy included in the transaction, he may not receive the proper title to it.