

## 2017 Sunreef 88 DD LITTLE GIANT



### Basic Vessel Summary

<b>Manufacturer:</b>	SUNREEF
<b>Model:</b>	Sunreef 88 DD
<b>Model Year:</b>	2017
<b>Year Built:</b>	2017
<b>Type of Yacht:</b>	Sail
<b>Price:</b>	\$5,778,000
<b>Condition:</b>	Used
<b>Status:</b>	Acceptance of Vessel
<b>Location</b>	Sint Maarten (Dutch part)
<b>Manuf. Length:</b>	88' 0" ( 26.82 m)
<b>Maximum Draft:</b>	7' 7" ( 2.31 m)
<b>Beam:</b>	39' 8" ( 12.09 m)
<b>LWL:</b>	85' ( 25.91 m)
<b>Mast Height Clearance:</b>	130' 4" ( 39.73 m)
<b>No. of Cabins:</b>	5 + 3 crew cabins with heads

<b>No. of Heads:</b>	4
<b>Fuel Capacity:</b>	2113 g
<b>Water Capacity:</b>	582 g
<b>Holding tank:</b>	211
<b>Cruise speed:</b>	9
<b>Max speed:</b>	15
<b>Weight - Displacement:</b>	92 ton (184000 lb)
<b>Hull Material:</b>	Fiberglass Reinforced Plastic- FRP
<b>Hull Configuration:</b>	Catamaran
<b>Engine Manufacturer</b>	CUMMINGS
<b>Engine Model</b>	QSB6.7 turbo charged
<b>Engine Year</b>	2023
<b>Engine Horsepower</b>	425
<b>Engine Hours (Port)</b>	686
<b>Engine Hours (Starboard)</b>	693
<b>Engine Type</b>	Inboard
<b>Engine Configuration</b>	Twin
<b>Engine Fuel Type</b>	Diesel
<b>Engine Condition</b>	Used
<b>Does the boat have a generator?</b>	Yes
<b>Generator Model</b>	ONAN CUMMINS
<b>Generator Operating Hours</b>	1230 P 1226 S
<b>Generator Horsepower</b>	2 x 27 KW
<b>Does a dinghy come with the boat?</b>	Yes
<b>Dinghy Model</b>	ZODIAC PRO 5.5
<b>Dinghy Length</b>	18
<b>Dinghy Model Year</b>	2022
<b>Dinghy Outboard Manufacturer</b>	Mercury
<b>Dinghy Outboard Horsepower</b>	115
<b>Dinghy Outboard Year</b>	2022

### [Boat Description:](#)

New bottom paint Oct 2025 and perfect bottom survey available for review

Little Giant is a custom-built Sunreef 88 Double Deck sailing catamaran that recently completed a \$1.5M refit in 2024, making her one of the most refined luxury catamarans on the market. Privately owned and never chartered, she offers over 300m<sup>2</sup> of elegant living space and now boasts a 94-foot LOA thanks to a new Sunreef-installed tender lift platform.

Her standout features include a full-beam master suite on the main deck, five guest cabins, recessed jetski storage, a new 5.5m Zodiac tender, Flexiteek decking, new engines, updated rigging, copper bottom, and a sleek matte grey hull wrap. She's incredibly stable with a 40-foot beam and designed for effortless sailing with centralized sail handling on the flybridge.

Built to MCA commercial standards and fully world-cruise ready, Little Giant is ideal for those seeking a truly unique, turnkey catamaran offering superyacht-level luxury without the operating costs.

She'll be cruising the Caribbean in 2025—schedule your visit now.

## Full Specification

### Layout & Accommodations

10 guests

5 staterooms

1 full beam master suite

3 VIP guest cabins

1 guest cabin

4 crew

Separate crew cabin for 2 aft on the center line at deck level

The custom wine glass rack in the salon is a functional work of art.

The salon has large “L” shaped seating area with a 110” mirror on the forward bulkhead that has an embedded 80” LED television behind the mirror that is only visible through the mirror when on. The forward section of the salon has a raised ceiling creating immense space and huge volume. There is a second TV recessed in the ceiling in the aft-mid section of the salon that is on a mount that rotates so that the screen can be viewed from the cockpit or swivels to be viewed from the dining table.

### Galley

Propane stove with exhaust fan

Wine cooler

6 burner Miele induction electric

Gaggenau electric oven

Gaggenau Microwave

2 Miele double door refrigerator

1 Miele double door freezer

Large deep stainless sink

Coffeemaker

2 In floor chest freezer in bilge below galley

Miele professional dish washer

Huge wine rack in the bilge are starboard side

## Deck & Equipment

Recessed areas on deck mis-ship to store 2 jet ski with special rigging for launching.

New anchor bow rollers

Both anchor chains have been re-galvanized

Quick XR7 Windlass 24V

New tender lift with 1300 kilo capacity

Rocna Anchor

Bruce anchor

New trampoline

Flybridge

Center line helm

Bimini top with isinglass enclosure

New grill

New ice maker

## Electronics & Navigation

Starlink Performance antenna

All marine electronics are duplicated on the fly-bridge and raise inside helm station.

Raymarine Axiom touchscreen plotters and navigation instruments

Auto pilot

AIS

Wind instruments

EPIRB

VHF

SSB

Numerous multifunction displays

## Electrical, Power & Plumbing

Custom silent Generator exhaust system with function to switch from outside to inside of the hulls

2 X Onan/ Cummins 27 KW, Both generators rebuilt

Port Gen 1230

Star Gen 1226

Grey water tanks 2 X 211 gal for use in sensitive marine environments

Black water tanks 2 X 103 gal

Lithium house batteries 24V 2100Ah New

Voltage 220V 50 hz and 12V and 24V

Victron Phoenix Inverter 24 Volt 5000 Watt 220V, New 2025

Victron Skylla 24 V 100 AMP Battery Charger 220V

All hoses and pumps have been replaced, fresh water, black water, grey water, raw water  
Nov 2024

3 new A/C chillers for reliable cooling with new pumps and insulation March 2024

2 New integrated water tanks, custom built in composite to a very high standard and  
increasing capacity by 20%

## Engine & Mechanical

Two new 425 HP, 6 cylinder turbo charged and after cooled Cummins QSB6.7 engines  
NEW Dec 2023

New engines are EPA/CE compliant with latest reduces emission and low noise quite  
operation

Electronic digital throttles and control displays at flybridge and lower enclosed raise helm  
station.

2 X Onan/ Cummins 27 KW, Both generators rebuilt Dec 2024. 1230 hrs (Port), 1226 hrs  
(Starboard)

New fire suppression system Fire boy

Diesel day tanks in engine rooms 2 X 31 Gals cleaned

Engine room ventilation fans have been reconditioned. Nov 2023

## Sails & Rigging

High end custom 34m carbon mast and boom

NEW North Sails Square Top Mainsail NPC Cross-Cut ND 94HA with Anomaly Headboard  
System New 2025

Genoa 1940 sq ft

Gennaker 4145 sqft

Code Zero 385 M2 rebuilt 3 years ago

Stay sail 77 M2

Storm Jib 20 M2

5 Years mast service done 2022, completely new Kevlar/Arimid shrouds and stays

All new running rigging

Sails have been removed and inspected and minor repairs by North Sails Ft Lauderdale, Nov  
2023

New LED lights in boom

## Additional Information

MCA certificate for commercial charter purposes. Category 2

2 liferafts in service

1 jet Ski

Spare rudder with a concealed location to store in bow compartment

List of refit items:

Two new engines

Both generators rebuilt

Passarail rebuilt

All new running rigging and lines

Rig off rigging inspection and refit rig fully surveyed by Nance & Underwood Rigging Service

All sails have been removed and inspected

Teak decks sanded

3 new A/C chillers

Salon head liner

Bow trampolines

cabin carpets

Tender lift custom made to fit perfectly

Flexiteek deck

Gel house batteries

Engine room fire suppression system

Engine and gen batteries

Thru hulls

Hoses

Life rafts serviced

Furling motors rebuilt

Both windlasses rebuilt

Bow thrusters rebuilt new batteries

Forward storage locker repainted and redesigned to hold dive gear, dive compressor, water sports toys, workshop with tool storage, and storage for extra sails with easy access

New electronics

Water makers rebuilt

Engine room ventilation reconditioned

All bilges and engine rooms repainted

Rudder bearings replaced

Exterior cushions

Fly-bridge grill and ice-maker

Shaft seals and shaft laser aligned

Two new build-in integral water tanks adding 20% more capacity

Aft starboard crew cabin rebuilt with 2 bunks and dining/ work table

All teak decking sanded

Boom lights

Bottom survey completed late 2023 before launching

A/C system renewed with 3 new chiller compressors and chilled water lines and full service

Both water-makers have new high-pressure pumps and Membranes, Jan 2024

**Image Gallery**











































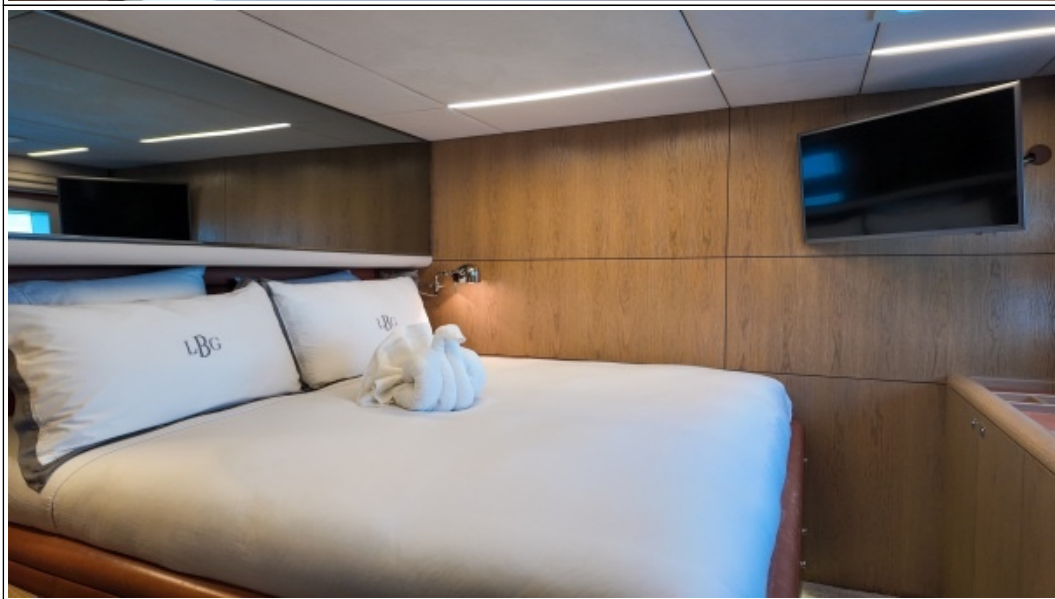




















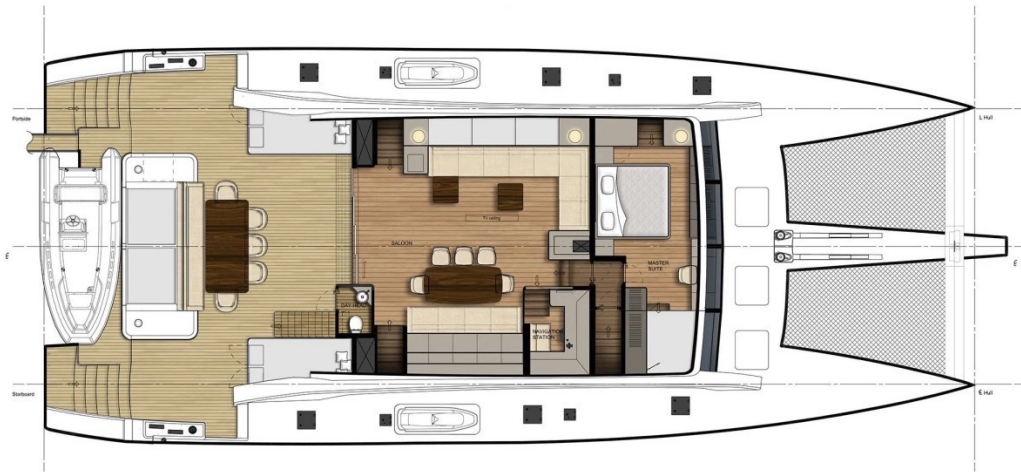








88sailing



 Sunreef Yachts  
LUXURY CATAMARAN MANUFACTURER









**Disclaimer**

The Company offers the details of this vessel in good faith but cannot guarantee or warrant the accuracy of this information nor warrant the condition of the vessel. A buyer should instruct his agents, or his surveyors to investigate such details as the buyer desired validated. This vessel is offered subject to prior sale, price change, or withdrawal without notice. Photos may not properly reflect the current condition of the actual vessel offered for sale. In some cases stock photographs may have been used.

**Mechanical Disclaimer**

Engine and generator hours are as of the date of the original listing and are a representation of what the listing broker is told by the owner and/or actual reading of the engine hour meters. The broker cannot guarantee the true hours. It is the responsibility of the purchaser and/or his agent to verify engine hours, warranties implied or otherwise and major overhauls as well as all other representations noted on the listing.

**Dinghy Disclaimer**

All dinghies are considered separate vessels and should have separate titles and documents. There is no guarantee as to the title of the dinghy on this vessel so Buyer accepts that while he may receive the dinghy included in the transaction, he may not receive the proper title to it.