

2017 Lagoon 450 HONU



Basic Vessel Summary

Manufacturer:	LAGOON
Model:	Lagoon 450
Model Year:	2017
Type of Yacht:	Sail
Price:	\$569,000
Condition:	Used
Status:	Sold
Location	Panama
Manuf. Length:	45' 10" (13.97 m)
Maximum Draft:	4' 28" (1.93 m)
Beam:	25' 9" (7.85 m)
No. of Cabins:	4
No. of Heads:	4
Electric Circuit:	220 volt
Fuel Capacity:	2x66.04 g
Water Capacity:	2x46.23 g
Weight - Displacement:	16.648 ton (33296 lb)
Hull Material:	Fiberglass Reinforced Plastic- FRP
Hull Configuration:	Catamaran
Engine Manufacturer	Yanmar
Engine Model	4H57
Engine Year	2017
Engine Horsepower	57
Engine Hours (Port)	3003.7
Engine Hours (Starboard)	3005.4

- Reverse / Inverter: YES
- Repeter / Repetidor: YES
- Handheld Radio / Portable Radio: ICOM

Engine & Mechanical

ENGINES / MOTORES

- Brand / Brand: YANMAR
- Model: 4H57
- Year: 2017
- Power: 57HP
- Port hours: 3003.7 (JUN 2022)
- Starboard hours: 3005.4 (JUN 2022)
- Drive / Transmisión: SAIL DRIVE

Sails & Rigging

SAILS & RIGGINGS / SAILS & RIGGING

- Mainsail / Mayor: YES
- Genoa / Genoa: YES
- Code 0 / Código 0: YES (CARBON FIBER)

Additional Information

SAFETY EQUIPMENT:

- Liferaft / Balsa salvavidas: 12 PASSENGERS

ADDITIONAL / ADICIONALES

- Dinghy / Bote auxiliar: HIGHFIELD FOR LAGOON – ENGINE HONDA 20HP 4 STROK
- Solar Panels: 2 BNQ 230 W
- Water maker / Generador de Agua: SALATOR DUO 12 V AND 220 V
- Batteries / Baterias: 6 EXIDE MOD. ES1350 120 AMP 12 V
- Anchor: 2

Image Gallery





















































































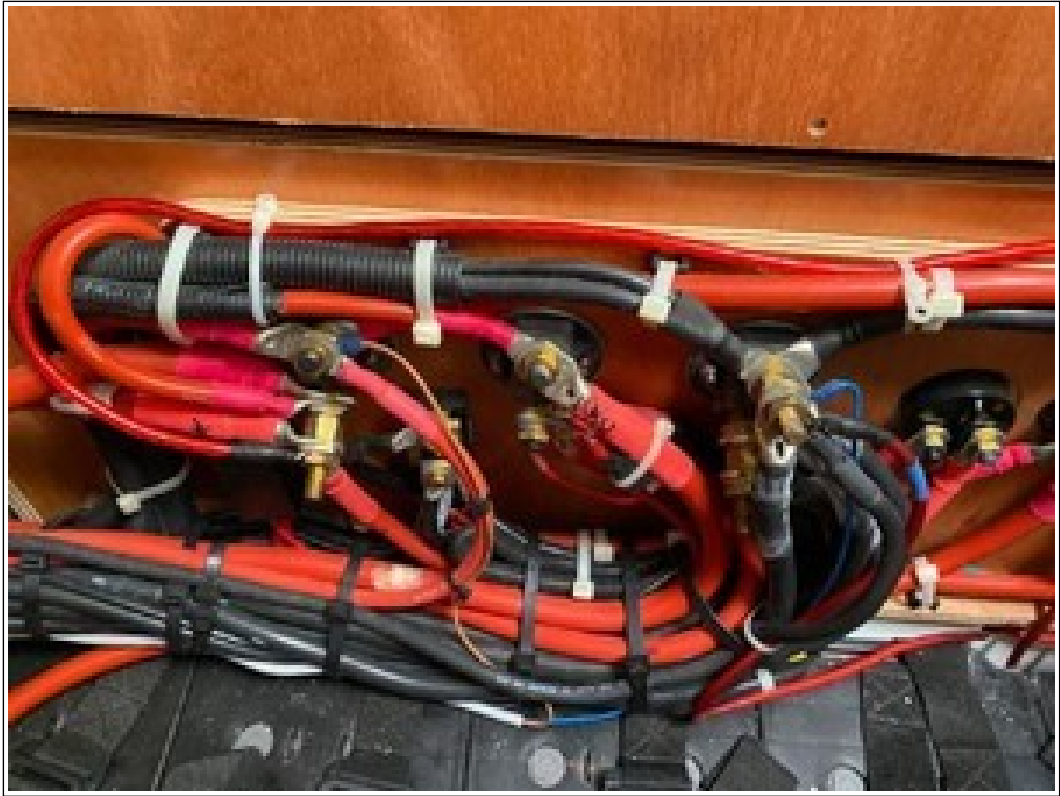






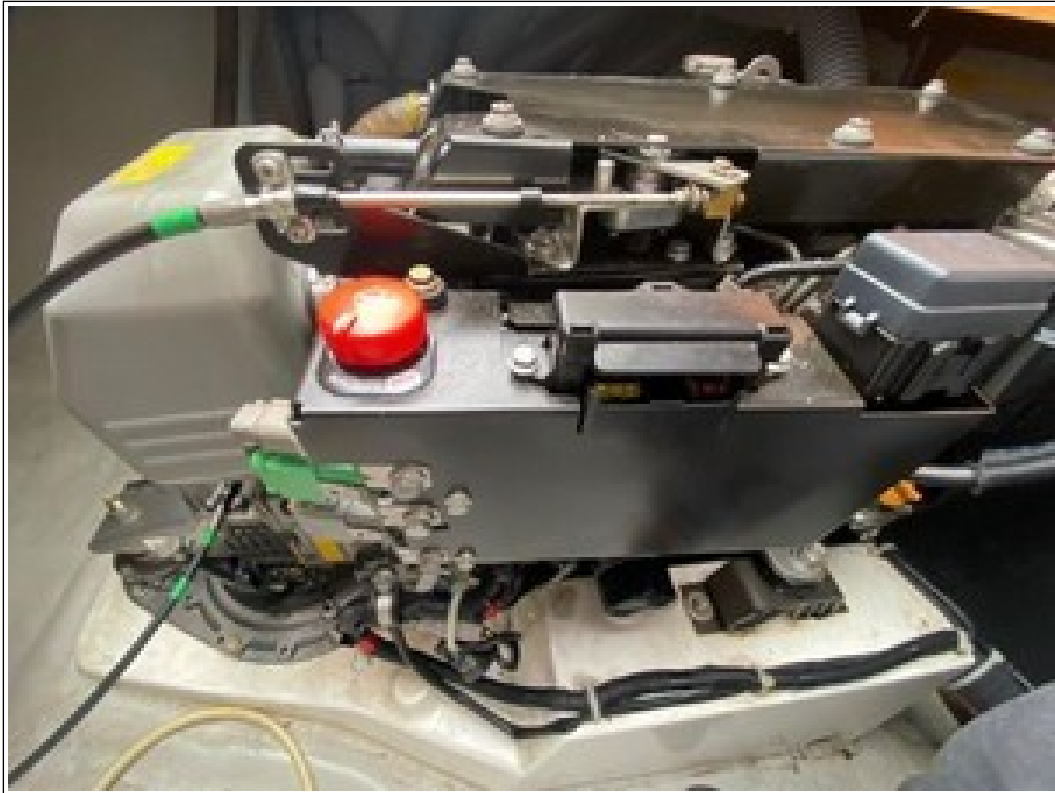


























































Disclaimer

The Company offers the details of this vessel in good faith but cannot guarantee or warrant the accuracy of this information nor warrant the condition of the vessel. A buyer should instruct his agents, or his surveyors to investigate such details as the buyer desired validated. This vessel is offered subject to prior sale, price change, or withdrawal without notice. Photos may not properly reflect the current condition of the actual vessel offered for sale. In some cases stock photographs may have been used.

Notes: This listing is courtesy of the BoatWizard MLS and may be centrally listed with another broker. It is offered as a convenience by this broker/dealer to its clients and is not intended to convey representation of a particular vessel.

Mechanical Disclaimer

Engine and generator hours are as of the date of the original listing and are a representation of what the listing broker is told by the owner and/or actual reading of the engine hour meters. The broker cannot guarantee the true hours. It is the responsibility of the purchaser and/or his agent to verify engine hours, warranties implied or otherwise and major overhauls as well as all other representations noted on the listing.

Dinghy Disclaimer

All dinghies are considered separate vessels and should have separate titles and documents. There is no guarantee as to the title of the dinghy on this vessel so Buyer accepts that while he may receive the dinghy included in the transaction, he may not receive the proper title to it.