

2022 Kelsall KSP 65 ADALIZ



## Basic Vessel Summary

<b>Manufacturer:</b>	BALLOTTA
<b>Model:</b>	Kelsall KSP 65
<b>Model Year:</b>	2022
<b>Type of Yacht:</b>	Power
<b>Price:</b>	\$1,399,000
<b>Condition:</b>	New
<b>Status:</b>	Catamaran for Sale
<b>Location</b>	La Punta Peru
<b>Manuf. Length:</b>	65' 0" ( 19.81 m)
<b>Beam:</b>	28' 5" ( 8.66 m)
<b>No. of berths:</b>	4
<b>No. of Cabins:</b>	4
<b>No. of Heads:</b>	4
<b>Electric Circuit:</b>	220 volt
<b>Fuel Capacity:</b>	2X500 g

<b>Water Capacity:</b>	2X200 g
<b>Holding tank:</b>	2X706GAL
<b>Hull Material:</b>	Fiberglass Reinforced Plastic- FRP
<b>Hull Configuration:</b>	Catamaran
<b>Engine Manufacturer</b>	Yanmar
<b>Engine Model</b>	6LY2A
<b>Engine Year</b>	2022
<b>Engine Horsepower</b>	2x440hp
<b>Engine Hours (Port)</b>	102 Hours
<b>Engine Hours (Starboard)</b>	104 Hours
<b>Engine Type</b>	Inboard
<b>Engine Fuel Type</b>	Diesel
<b>Does the boat have a generator?</b>	Yes
<b>Generator Model</b>	NORTHERN LIGHTS

### [Boat Description:](#)

POWER CATAMARAN FOR SALE Brand new condition, private yacht, fully loaded.

## Full Specification

### [Layout & Accommodations](#)

Inside Equipment:

Electric Bilge Pump

6 JOHNSON SPX FLOW

Oven

TEKA

Microwave Oven

TEKA

Air Conditioning

DOMETIC 4+4 10,000BTU

Electric Head

Hot Water

Refrigerator

SAMSUNG 650 LT

Deep Freezer

Samsung 650 LT

Battery Charger

## Accommodations:

Double Berths

4

Cabins

4

Heads

4

## Deck & Equipment

Outside Equipment

Cockpit Shower

Liferaft

HAINING 20 PAX

Cockpit Cushions

Cockpit Table

Swimming Ladder

Propeller Type

4 Blade

Propeller Material

Bronze

## Electronics & Navigation

### ELECTRONICS:

Air condition DOMETIC 4+4 10,000 BTU

Generator NORTHERN LIGHTS 5KW/56. 25KW/176

Inversor VICTRON ENERGY. 5,000 watts

Radar RAYMARINE

Automatic pilot RAYMARINE

GPS RAYMARINE AXIOM 7

Winch MAXWELL

Bilge pump 6 JOHNSON SPX FLOW 220 GPH 12V

VHF Radio ICOM ICM 330

Radio FUSION APOLO (3 outside control)

Subwoofer (flybridge)

Speakers JL AUDIO (flybridge0

TV 70" LG MODEL 70UN7100PSA with satellite DIRECTV antenna

Kitchen/Oven TEKA MODEL INDUCT

Microwave TEKA MODEL ML 820 BIS

Refrigerator SAMSUNG MODEL RS65R5691B4 650 LT

Grill KENYON

Ice maker U-LINE Model ULNSS1095MF

Small fridge DOMETIC

BATTERIES

Salon 6 MASTERVOLT AGM 220 Volts

Engines 2 BOSCH S4 180E 4 DLT-B

Generator 2 BOSCH S27

Subwoofer Flybridge

NAVIGATION EQUIPMENT:

Depth meter RAYMARINE

Odometer

Compass RITCHIE

Radio Beacon

Nautical crane STRUCTURES 1700 LB

2 displays RAYMARINE AXIOM 9

## Electrical, Power & Plumbing

Electrical Equipment:

Generator

NORTHERN LIGHTS

Inverter

VICTRON ENERGY

Electronics

Radar

RAYMARINE

Log-Speedometer

?

Repeater(s)

Raymarine

TV Set

LG 70

Navigation Center

?

Plotter

Raymarine

Autopilot

RAYMARINE

Radio

FUSION APOLO

Compass  
RITCHIE  
GPS  
RAYMARINE AXIOM 7  
Cockpit Speakers  
?  
VHF  
ICOM IC-M330

## Engine & Mechanical

### SPECIFICATIONS

#### Speed & Distance

##### Cruising Speed

8kn

##### Max Speed

24kn

#### Dimensions

##### Length Overall

65ft

##### Beam

28.42ft

#### Weights

##### Dry Weight

48Lb

#### Miscellaneous

##### Windlass

##### Electric Windlass

##### Liferaft Capacity

2

##### Electrical Circuit

None

#### Tanks

##### Fresh Water Tank

2 X 200 Gal

##### Fuel Tank

2 X 500 Gal (Stainless Steel)

##### Holding Tank

2 X 706 Gal

Image Gallery















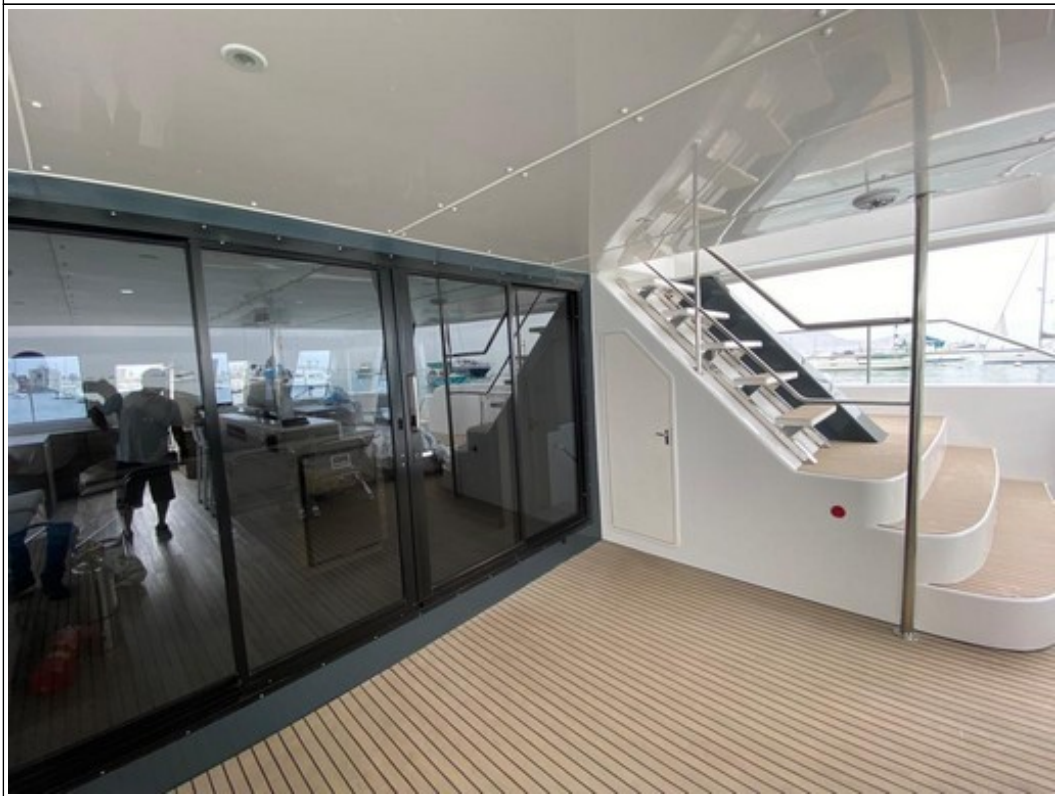






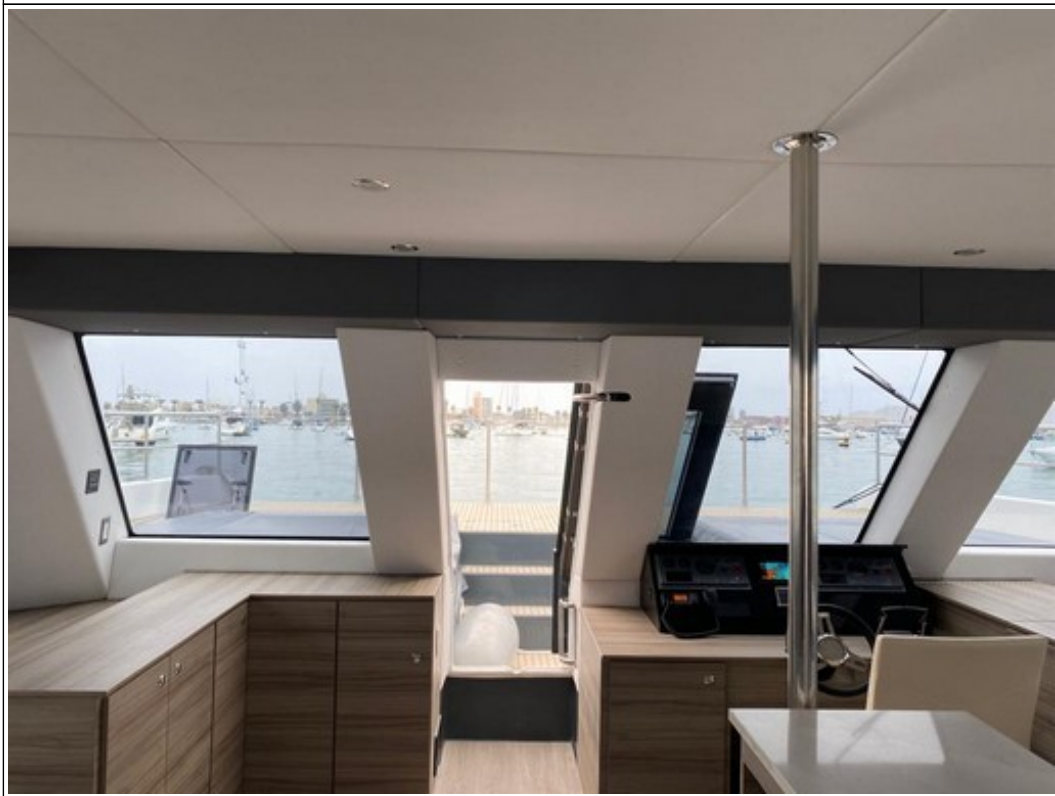


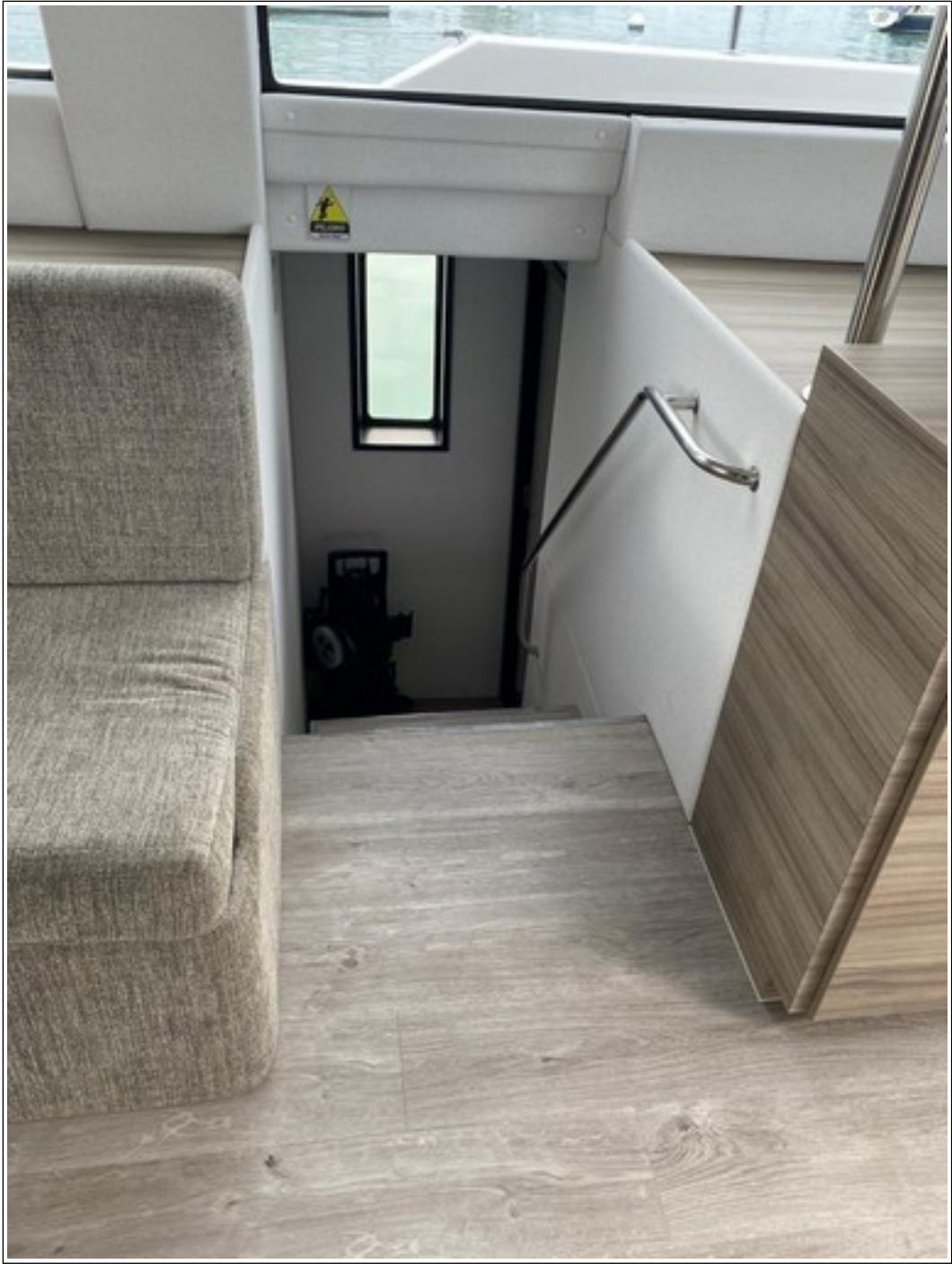
























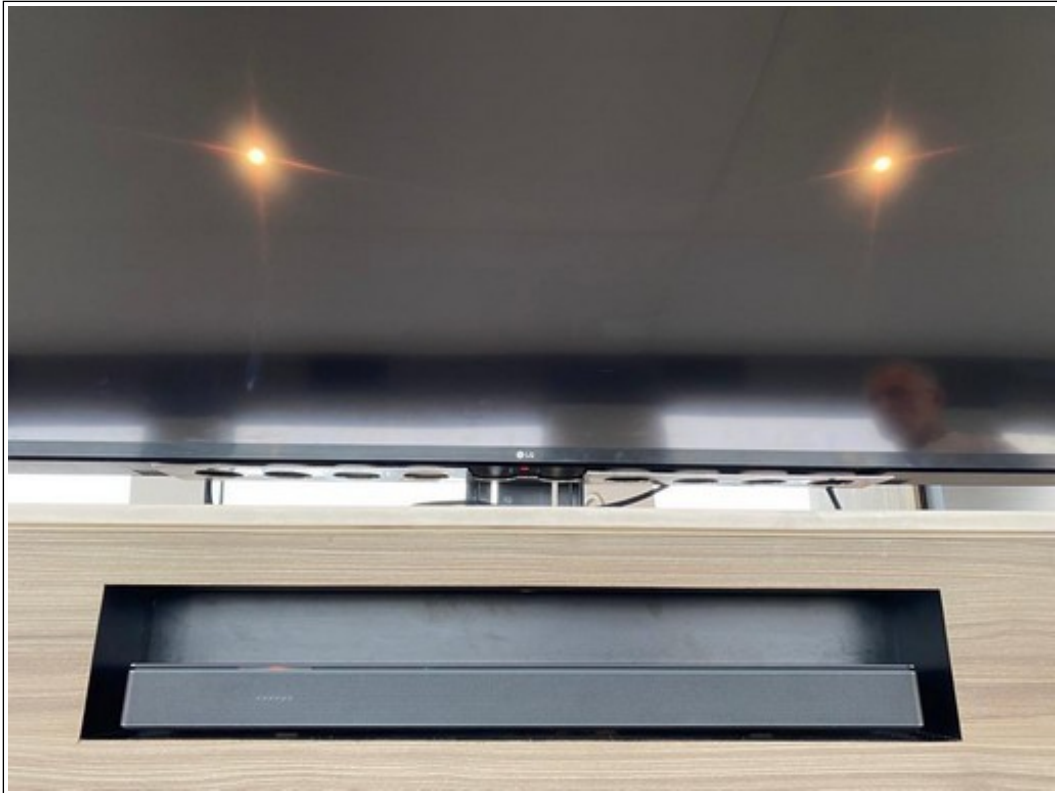
















































































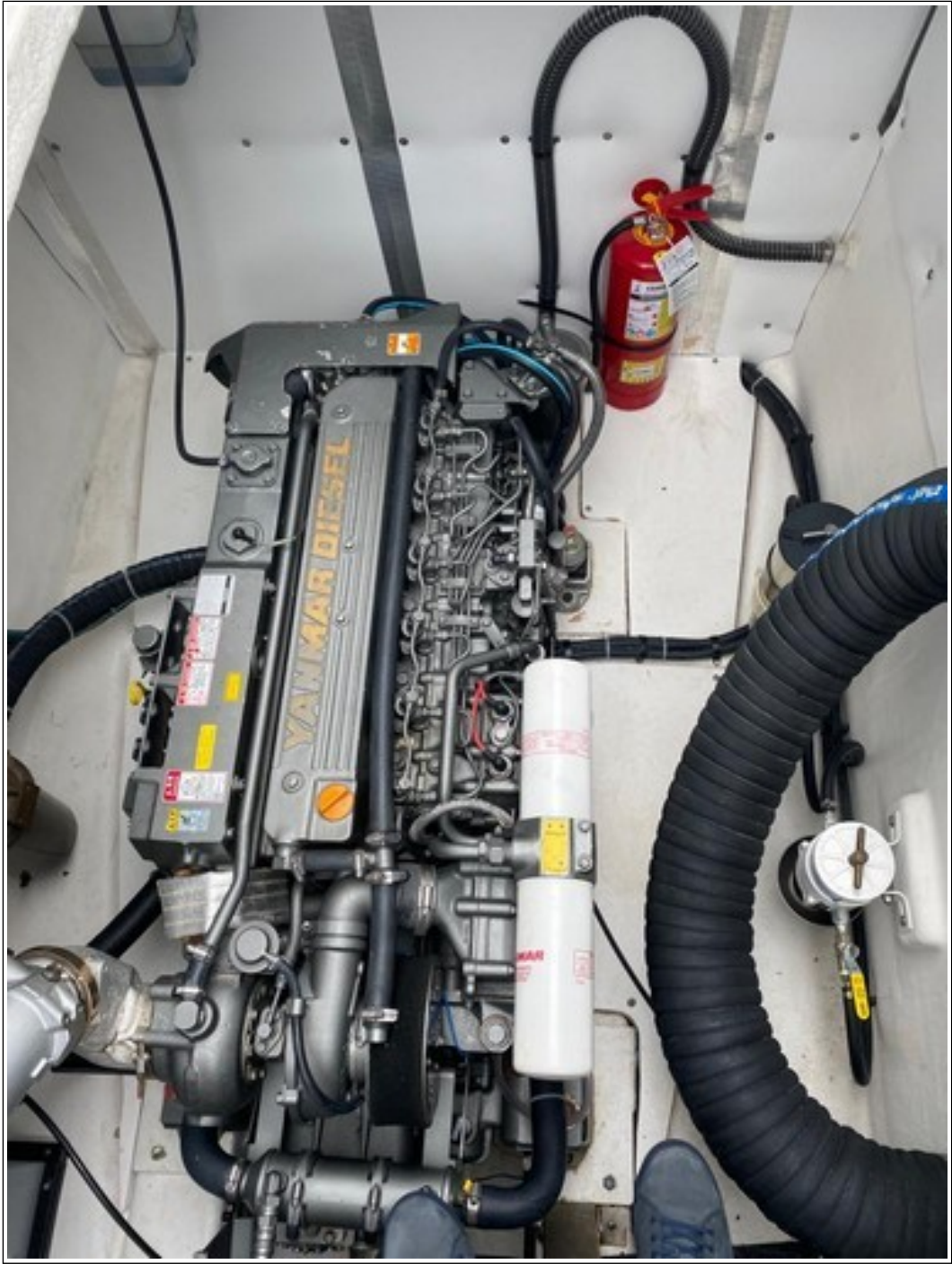




**GER**  
ノックを開け  
熱湯が吹き  
恐れあり。  
while the  
hot water  
is on.  
28296-07260

Model	6LY2A-STP
Gear Model	
Continuous power kW	257 / 3100 min <sup>-1</sup>
Speed of prop. shaft	min <sup>-1</sup>
Fuel stop power kW	324 / 3300 min <sup>-1</sup>
ENG. No.	3730
MFG. DATE	NOV. / 2020

**YANMAR**  
YANMAR POWER TECHNOLOGY CO., LTD.  
MADE IN JAPAN















200102112		PROD NO	970003484	SERIAL NO.	03399310	SKU NO.	961000016
DESCRIPTION		DTG10-2371-410A SMRTSTRT 6MR					
CAP. (BTU)	VOLTAGE/HERTZ	PHASE	MAX CB	MIN CA	FLA.COOL	FLA.HEAT	SHOP ORDE
10000	208-230/50-60	1	15	9	3.2	4.1	568534
FAN	L.R.A.	REFRIG---OZ/GRAMS	iCO2e	GWP	OIL	DIAGRAM	DPEV
.61	21.5	R410A 10.9/308	0.66	2088	POE	340033	DOI530
ELEC. DATA ABOVE BASED ON 230V/60HZ; BTU DERATED AT 230V/50HZ; 6" MOUNT RING 10.88 OUNCES 410A REFRIGERANT; SMART START				PATENT(S):		8,056,351	
FEATURES: DOMETIC GLOBAL TURBO				2000 NORTH ANDREWS AVE POMPANO BEACH, FL 33069 USA 954-973-2477 WWW.DOMETIC.COM			
Assembled in USA				<b>DOMETIC</b>			













### **Disclaimer**

The Company offers the details of this vessel in good faith but cannot guarantee or warrant the accuracy of this information nor warrant the condition of the vessel. A buyer should instruct his agents, or his surveyors to investigate such details as the buyer desired validated. This vessel is offered subject to prior sale, price change, or withdrawal without notice. Photos may not properly reflect the current condition of the actual vessel offered for sale. In some cases stock photographs may have been used.

Notes: This listing is courtesy of the BoatWizard MLS and may be centrally listed with another broker. It is offered as a convenience by this broker/dealer to its clients and is not intended to convey representation of a particular vessel.

### **Mechanical Disclaimer**

Engine and generator hours are as of the date of the original listing and are a representation of what the listing broker is told by the owner and/or actual reading of the engine hour meters. The broker cannot guarantee the true hours. It is the responsibility of the purchaser and/or his agent to verify engine hours, warranties implied or otherwise and major overhauls as well as all other representations noted on the listing.

### **Dinghy Disclaimer**

All dinghies are considered separate vessels and should have separate titles and documents. There is no guarantee as to the title of the dinghy on this vessel so Buyer accepts that while he may receive the dinghy included in the transaction, he may not receive the proper title to it.