

## 2018 Lagoon 450 INDY



### Basic Vessel Summary

<b>Manufacturer:</b>	LAGOON
<b>Model:</b>	Lagoon 450
<b>Model Year:</b>	2018
<b>Year Built:</b>	2017
<b>Type of Yacht:</b>	Sail
<b>Price:</b>	\$549,000
<b>Condition:</b>	Used
<b>Status:</b>	Sold
<b>Location</b>	Tortola Virgin Islands (British)
<b>Manuf. Length:</b>	45' 10" ( 13.97 m)
<b>Maximum Draft:</b>	4' 3" ( 1.30 m)
<b>Minimum Draft:</b>	4' 3" ( 1.30 m)
<b>Beam:</b>	25' 10" ( 7.87 m)
<b>Mast Height Clearance:</b>	75' 8" ( 23.06 m)
<b>No. of berths:</b>	6-12
<b>No. of Cabins:</b>	4
<b>No. of Heads:</b>	4
<b>Electric Circuit:</b>	110 volt
<b>Fuel Capacity:</b>	274 g
<b>Water Capacity:</b>	240 g
<b>Holding tank:</b>	4
<b>Weight - Displacement:</b>	16.648 ton (33296 lb)
<b>Hull Material:</b>	Fiberglass Reinforced Plastic- FRP
<b>Hull Configuration:</b>	Catamaran
<b>Engine Manufacturer</b>	Yanmar

<b>Engine Model</b>	4JH57
<b>Engine Year</b>	2018
<b>Engine Horsepower</b>	57
<b>Engine Hours (Port)</b>	1161
<b>Engine Hours (Starboard)</b>	1156
<b>Engine Type</b>	InBoard
<b>Engine Configuration</b>	Twin
<b>Engine Fuel Type</b>	Diesel
<b>Engine Condition</b>	Used
<b>Does the boat have a generator?</b>	Yes
<b>Generator Model</b>	Onan
<b>Generator Operating Hours</b>	6070
<b>Generator Horsepower</b>	14
<b>Does a dinghy come with the boat?</b>	No

## Full Specification

### [Layout & Accommodations](#)

#### EXTERIOR

On deck, the Lagoon 450 catamaran boasts extensive seating both forward of the saloon and aft, as well as a large swimming platform. The raised flybridge with safe access from both sides of the aft cockpit provides a panoramic bird's eye view at anchor and under sail.

With a beam of nearly 26 feet, she is very stable with wide decks and recessed hatches, to make moving around the yacht a breeze and with enough space for everyone aboard to find their own favorite place to read, sunbathe or simply watch the ever-changing seascapes go by.

The spacious aft cockpit comfortably sits all guests around an ample table to make dining al fresco a pleasure. There is a ventilation hatch on the bridge deck, that funnels a cooling breeze into the cockpit area.

#### INTERIOR

The stylish galley and saloon are tastefully designed and equipped. Full height ( 6'6") in the galley and saloon. She has a "U"-shaped galley for greater comfort at sea, equipped with broad work space and plenty of storage.

The saloon and cabins exceptionally well lit. The saloon has wrap around windows providing uninterrupted views as well as. This Lagoon 450 also benefits from Air Conditioning powered either by shore power or by a quiet generator, located away from sleeping quarters – making for a peaceful night's sleep. 4 Double cabins provide spacious accommodation for up to 8 adults. Natural light in the cabins thanks to large glazed panels on hulls. Rum-Away also has

two forward single berth suitable for either children or crew. Full height (6'6") ensuite separate shower stalls add to the comfort and convenience along with electric heads! The salon table can convert into a bed.

## Galley

SEA & FRESH WATER FOOT PUMPS IN GALLEY

ADDITIONAL FRIDGE 34 US GAL

1 ADDITIONAL S/S FRIDGE (in lieu of std) + 1 S/S FREEZER ??

ENO 3-BURNER STAINLESS STEEL STOVE TOP (propane)

ENO GAS OVEN

MICROWAVE

DEDICATED PROPANE LOCKER IN COCKPIT

DUAL BASIN STAINLESS STEEL SINK WITH STAINLESS STEEL FRESHWATER FAUCET

CORIAN COUNTERTOPS

AMPLE STORAGE SPACE

## Deck & Equipment

FLYBRIDGE DODGER

WINDLESS REMOTE CONTROL WITH CHAIN COUNTER

ALL ELECTRIC WINCHES AT STEERING STATION

PAIR OF STAINLESS STEEL DAVITS

ELECTRIC WINCH FOR DAVITS 40.2SRAEH

ELECTRIC WINCH TO PORT

12V COCKPIT FRIDGE 21 US GAL

LIFERAFT/SAFETY PACK for 8 PAX

HELM STATION CANVAS FLYBRIDGE BIMINI

SUN LOUNGER PADS FOR ROOF

WATERPROOF SPEAKERS IN COCKPIT

DECK COURTESY LIGHTING in TRANSOMS & COCKPIT

NAVIGATION, RUNNING AND MOORING LIGHTS

HELM SEAT CUSHIONS

AFT COCKPIT SEAT CUSHIONS

FORWARD COCKPIT CUSHIONS

AFT PORTHOLES IN AFT CABINS WITH CURTAINS

PORTHOLE IN GALLEY

FRESHWATER DOCK INLET

DECK WASH DOWN PUMP (SEA OR FRESH WATER)

FORWARD PULPITS WITH WOODEN SEAT

FENDERS + MOORING ROPES

Anchor: 55pd plow anchor with 200 ft of chain.  
She got some underwater lights.

### Electronics & Navigation

NAVIGATION PACK B&G  
B&G ZEUS 12" DISPLAY AT HELM STATION  
B&G ZEUS 12" DISPLAY AT NAV STATION  
B&G 4G WIFI MODULE  
B&G VHF V50  
2ND HANDSET AT HELMSTATION FOR VHF B&G  
VHF CABLE AND ANTENNA IN MAST

### Electrical, Power & Plumbing

CRUISAIR A/C 48000 BTU 110V  
Batteries charger: one 60 amps and one 40 amps charger.  
INVERTER 12/110V  
GENSET ONAN 13.5 KVA 110V/60 HZ WITH COCOON  
ELECTRIC QUIET FLUSH Heads ALL CABINS  
ELECTRIC CIRCUIT WITH 40 AMP BATTERY CHARGER  
BATTERY CONTROLLER  
50 FT 50AMP 125/250V MARINCO SHORE POWER CORD  
EXTRA FRESH WATER TANKS, PORT & STB, 2 x 46 US GAL  
FANS IN SALON AND CABINS  
FUSION USB PLAYER + 2 SPEAKERS IN SALON

### Engine & Mechanical

UPGRADE TO 2 X 57 HP YANMARS 4JH57

### Sails & Rigging

DOYLE MAINSAIL CRADLE COVER  
US SPARS ANODIZED ALUMINUM MAIN MAST WITH DOUBLE SPREADERS, STEPPED ON-DECK  
FRACTIONAL RIGH WITH SIDE & FORE DIAMOND STAYS, MAIN STAYS TO CHAIN PLATES  
ANODIZED ALUMINUM BOOM  
100% GENOA HEADSAIL WITH SUN COVER ON FURLER  
FULLY-BATTENED MAINSAIL WITH BALL BEARING LUFF CARS  
COMPLETE STANDING RIGGING

1 TWO-PART TACKLE ON MAINSAIL HALYARD

1 TOPPING LIFT

3 REEF PENNANTS

1 GENOA HALYARD

1 SPINNAKER HALYARD

CLUTCHES ON GENOA HALYARD, SPINNAKER AND TOPPING LIFT

CLUTCHES ON REEF PENNANT

1 FLAG HALYARD WITH SPREADERS

### [Additional Information](#)

Bottom Paint May 2019

Image Gallery











Version 4 cabines / 4 cabin version



















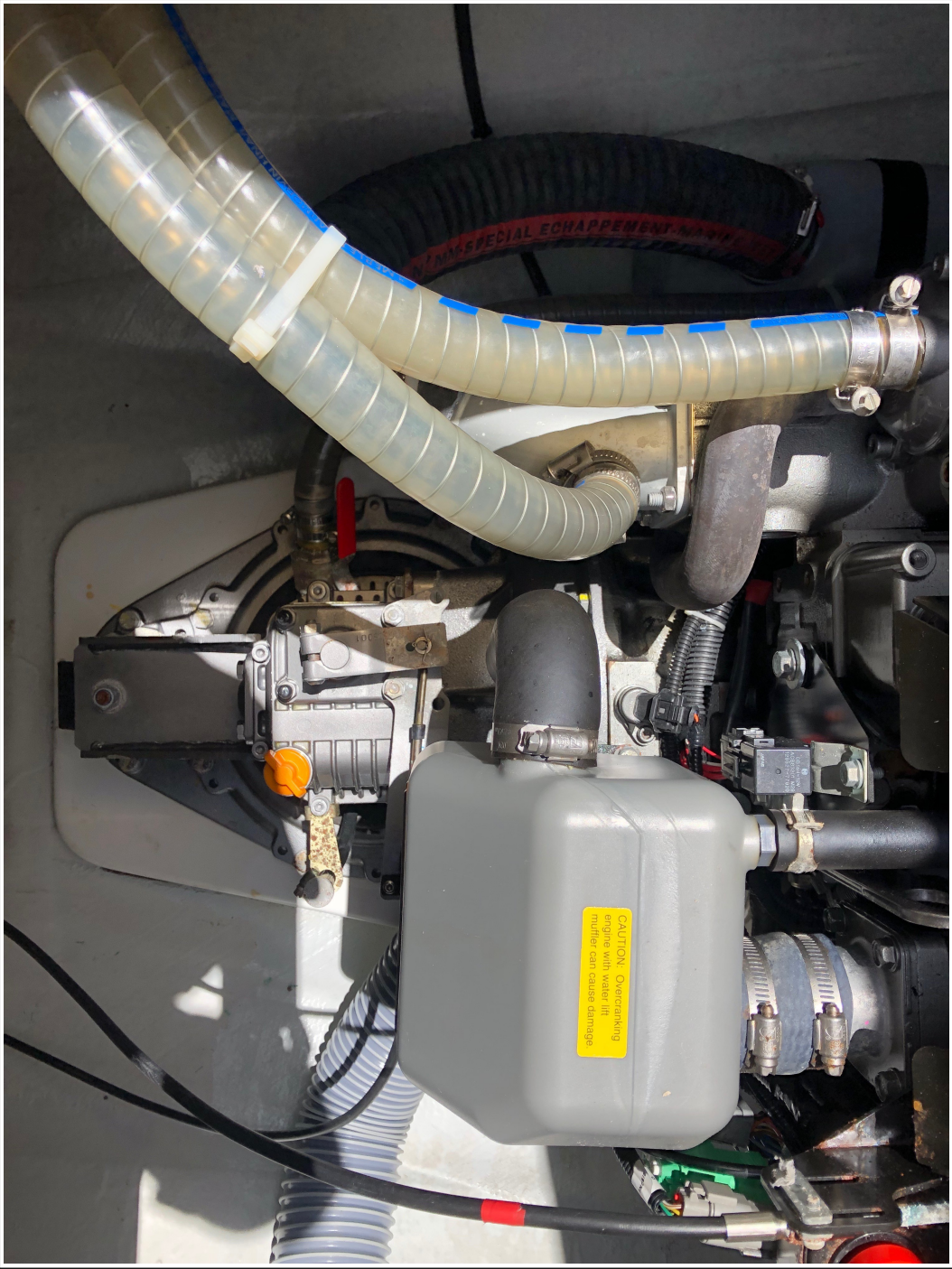




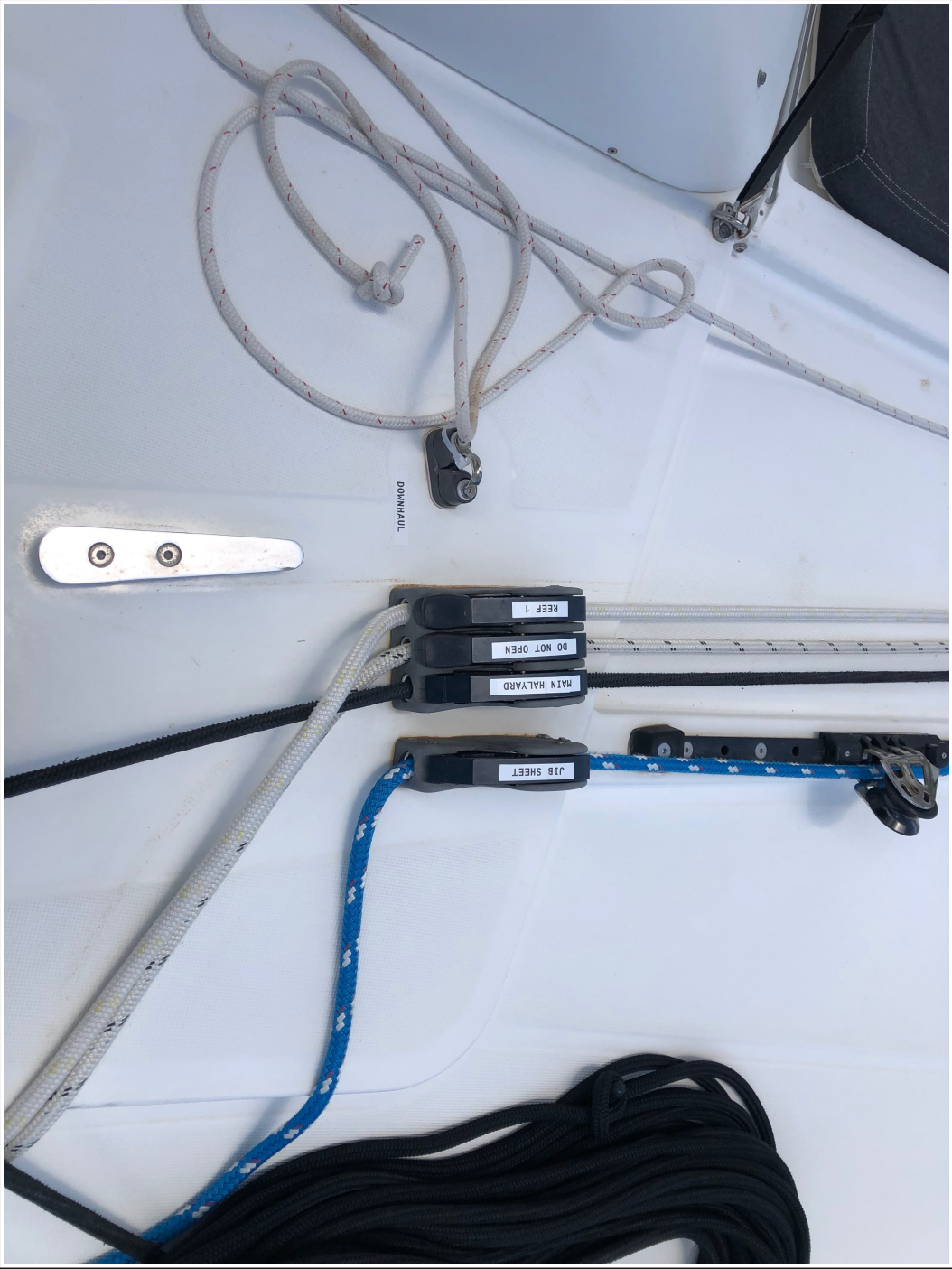


























### **Disclaimer**

The Company offers the details of this vessel in good faith but cannot guarantee or warrant the accuracy of this information nor warrant the condition of the vessel. A buyer should instruct his agents, or his surveyors to investigate such details as the buyer desired validated. This vessel is offered subject to prior sale, price change, or withdrawal without notice. Photos may not properly reflect the current condition of the actual vessel offered for sale. In some cases stock photographs may have been used.

### **Mechanical Disclaimer**

Engine and generator hours are as of the date of the original listing and are a representation of what the listing broker is told by the owner and/or actual reading of the engine hour meters. The broker cannot guarantee the true hours. It is the responsibility of the purchaser and/or his agent to verify engine hours, warranties implied or otherwise and major overhauls as well as all other representations noted on the listing.

**Dinghy Disclaimer**

All dinghies are considered separate vessels and should have separate titles and documents. There is no guarantee as to the title of the dinghy on this vessel so Buyer accepts that while he may receive the dinghy included in the transaction, he may not receive the proper title to it.