

2017 Lagoon 52 NAUTI BY NATURE II



Basic Vessel Summary

| | |
|-------------------------------|--------------------------------|
| Manufacturer: | LAGOON |
| Model: | Lagoon 52 |
| Model Year: | 2017 |
| Year Built: | 2017 |
| Type of Yacht: | Sail |
| Price: | \$995,000 |
| Condition: | Used |
| Status: | Internal Boats |
| Location | Tortola British Virgin Islands |
| Manuf. Length: | 52' 0" (15.85 m) |
| Maximum Draft: | 5' 1" (1.55 m) |
| Minimum Draft: | 5' 1" (1.55 m) |
| Beam: | 28' 8" (8.74 m) |
| Mast Height Clearance: | 91' 9" (27.97 m) |
| No. of Cabins: | 5 |

| | |
|--|--|
| No. of Heads: | 5 |
| Fuel Capacity: | 262 g |
| Water Capacity: | 252 g |
| Weight - Displacement: | 28.7015 ton (57403 lb) |
| Hull Material: | Fiberglass Reinforced Plastic- FRP |
| Hull Configuration: | Catamaran |
| Engine Manufacturer | YANMAR |
| Engine Model | 4JH80 |
| Engine Year | 2017 |
| Engine Horsepower | 80 |
| Engine Hours (Port) | 1390 |
| Engine Hours (Starboard) | 1398 |
| Engine Type | Inboard |
| Engine Configuration | Twin |
| Engine Fuel Type | Diesel |
| Engine Condition | Used |
| Does the boat have a generator? | Yes |
| Generator Model | ONAN GENSET 21Kva 1800rpm 220V / 60HZ + COCOON with MONITORING |
| Generator Operating Hours | 5376 |
| Does a dinghy come with the boat? | No |

[Boat Description:](#)

This essentially Lagoon 52 is simply a very special boat. She was fitted out and equipped for a private owner's use rather than a charter yacht and has been the demo 'show boat' at our head sales office in Ft Lauderdale. Our 'Cat woman', Melanne Maddalena, purchased her for her use, as well as to offer her for charter to Mel's loyal group of followers. This (sexy) exceptional yacht has extras that you will not find on most other 52's, such as TENDER LIFT HYDRAULIC PLATFORM (great for diving and swimming) WHITE CARBON CANOE BOOM WITH LED LIGHT. WHITE CARBON STEERING WHEEL. WHITE PAINTED MAST. AFT COCKPIT AND TRANSOM FLOORS IN TEAK. TWIN 80HP YANMAR ENGINES. WATERMAKER. TOILET, SHOWER & HEAD IN STARBOARD BOW COMPARTMENT. ADDITIONAL REFRIGERATOR IN THE GALLEY

Full Specification

Layout & Accommodations

INTERIOR WOOD IN LIGHT ALPI OAK with MILANO FLOOR
SPECIAL UPHOLSTERY
ADDITIONAL FRIDGE + FREEZER IN STARBOARD PASSAGE WAY
BERTH IN PORT BOW COMPARTMENT
FANS IN CABINS & SALON
TOILET, SHOWER & HEAD IN STARBOARD BOW COMPARTMENT

Galley

CUSTOM CHANGES TO SALON/GALLEY

Deck & Equipment

2 SUNLOUNGING PADS ON TRAMPOLINES
AFT COCKPIT CUSHIONS
BIMINI ON FLYBRIDGE HELM STATION with WINDSCREEN
BOARDING LADDER with OPENING LIFELINES
COCKPIT FRIDGE 17 US GALS
ELECTRICAL WINCH for S/S DAVITS
AFT COCKPIT FLOOR IN TEAK
CARBON STEERING WHEEL (Black SporTop, White Flybridge)

Electronics & Navigation

AIS 500 B&G TRANSCEIVER WITH ANTENNA COUPLING
ZEUS 16" DISPLAY AT HELM STATION
B&G WIFI MODULE
VHF B&G RS 90 DOUBLE HANDSET WITH DSC
VHF CABLE AND ANTENNA IN MAST

Electrical, Power & Plumbing

EXTRA FOR TENDERLIFT HYDRAULIC PLATFORM
NORTH AMERICAN SPECS (110v sockets, propane, shore power SMART Y, holding Tanks)
USB SOCKET IN CABIN EACH
ADDITIONAL CHARGER 100AMP
INVERTER 12/110V 3000 VA
ONAN GENSET 21Kva 1800rpm 220V / 60HZ + COCOON with MONITORING
SHAVER SOCKETS 110V IN HEADS (Each)

ELECTRIC FRESH WATER TOILETS
WATERMAKER 58G/H SEA RECOVERY AQUAMATIC 220V
REVERSE CYCLE CHILLED WATER AIR CONDITIONING 60,000 BTU

Sails & Rigging

CARBON CANOE BOOM WITH LED LIGHT & WHITE PAINTED ALUMINUM MAST
SET OF REINFORCED SAILS
WHITE PAINTED ALUMINUM MAST & BOOM

Additional Information

Equipment Configuration COMFORT:
ELECTRIC ENGINE THROTTLE AT HELM STATION (SporTop only)
HELM STATION CUSHIONS (Flybridge only)
STORAGE UNIT IN STARBOARD COCKPIT FURNITURE
ELECTRICAL CIRCUIT, AC MONITORING, BATTERY CHARGER
GEL BATTERIES 1260 AMP
PAIR of STAINLESS STEEL DAVITS with MANUAL WINCH
OPENING HATCHES & CURTAINS on AFT PORTHOLES of AFT CABINS
LEATHER BULKHEAD ORGANIZERS IN CABINS
FUSION ms-ra70 + 4 SPEAKERS IN SALON + 2 IN COCKPIT
NAVIGATION PACK B&G 2017/2018
HELM STATION GATE (SporTop only)
WINDLESS REMOTE CONTROL with CHAIN COUNTER
DECK WASH DOWN PUMP (SEA OR FRESH WATER)
FRESHWATER DOCK INLET
INDIRECT LIGHTING IN CABINS & SALON
DECK COURTESY LIGHTS IN TRANSOM, COCKPIT and FLYBRIDGE
2 SPOTLIGHTS 12V IN AFT BEAM
BATHROOM & SHOWER FLOORS with TEAK SLATS

CUSHION AS IS WHERE IS

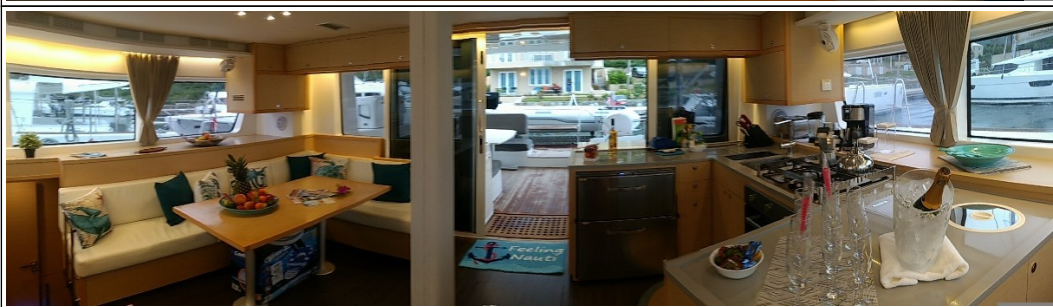
Image Gallery











































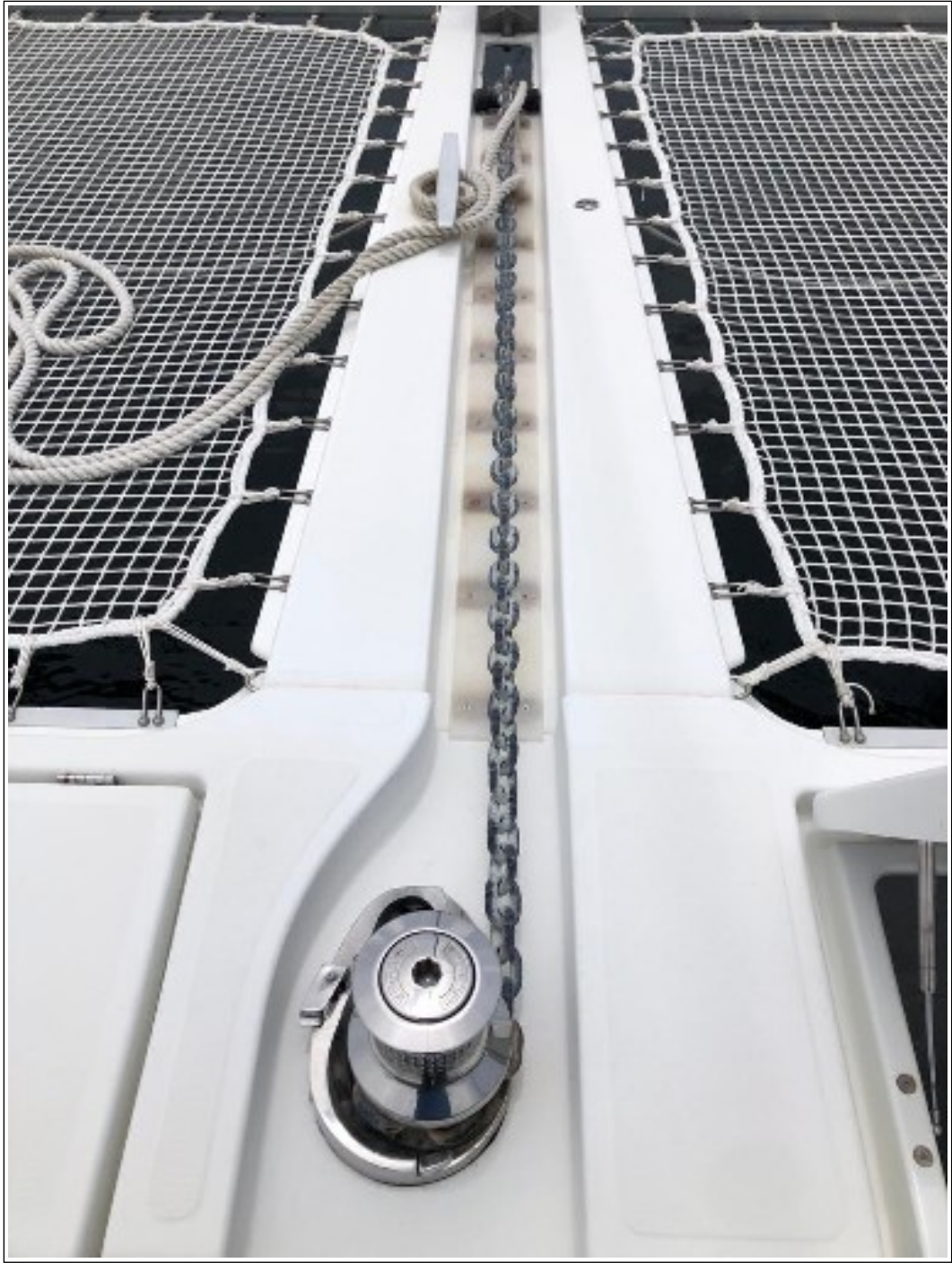












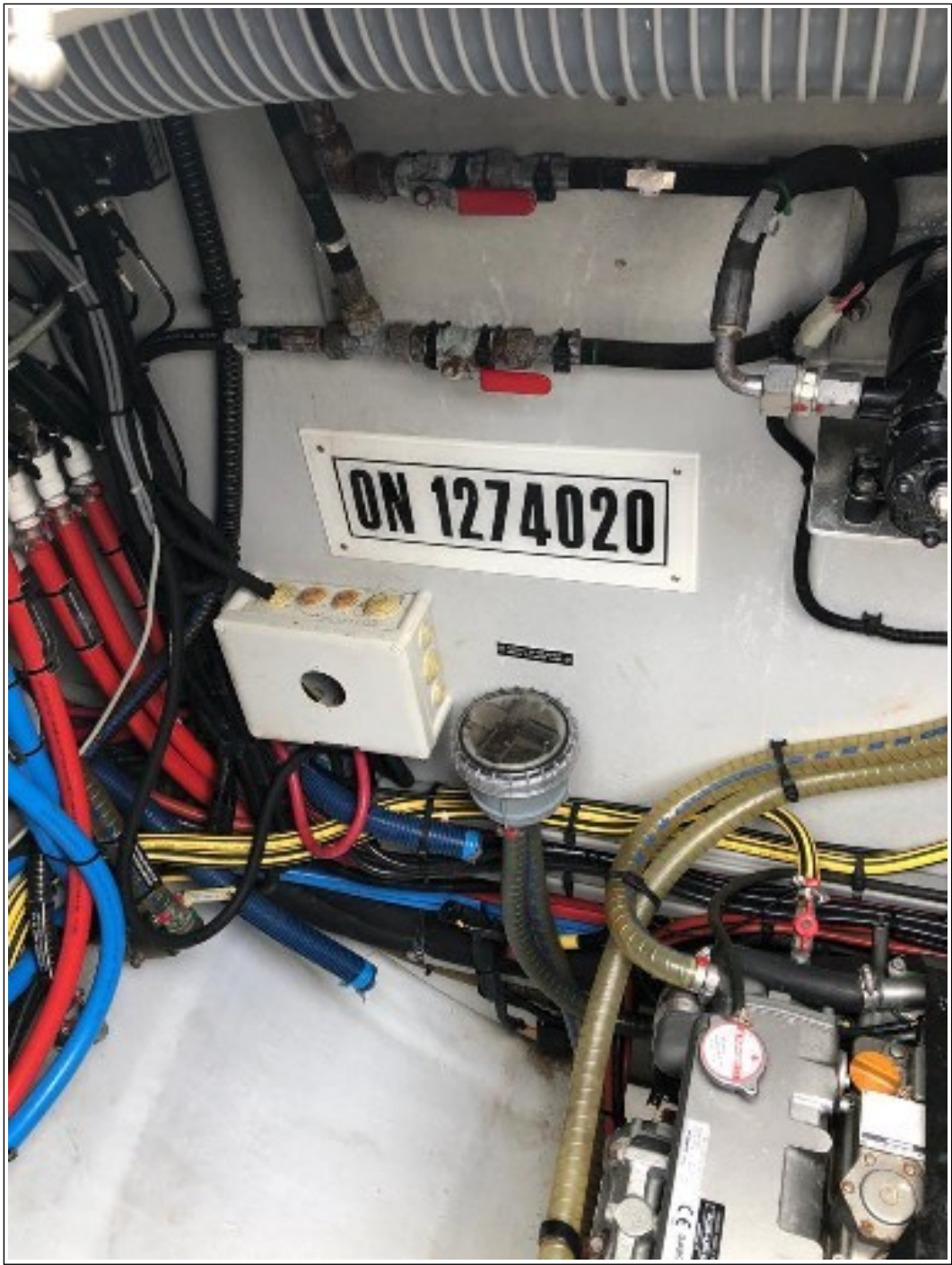














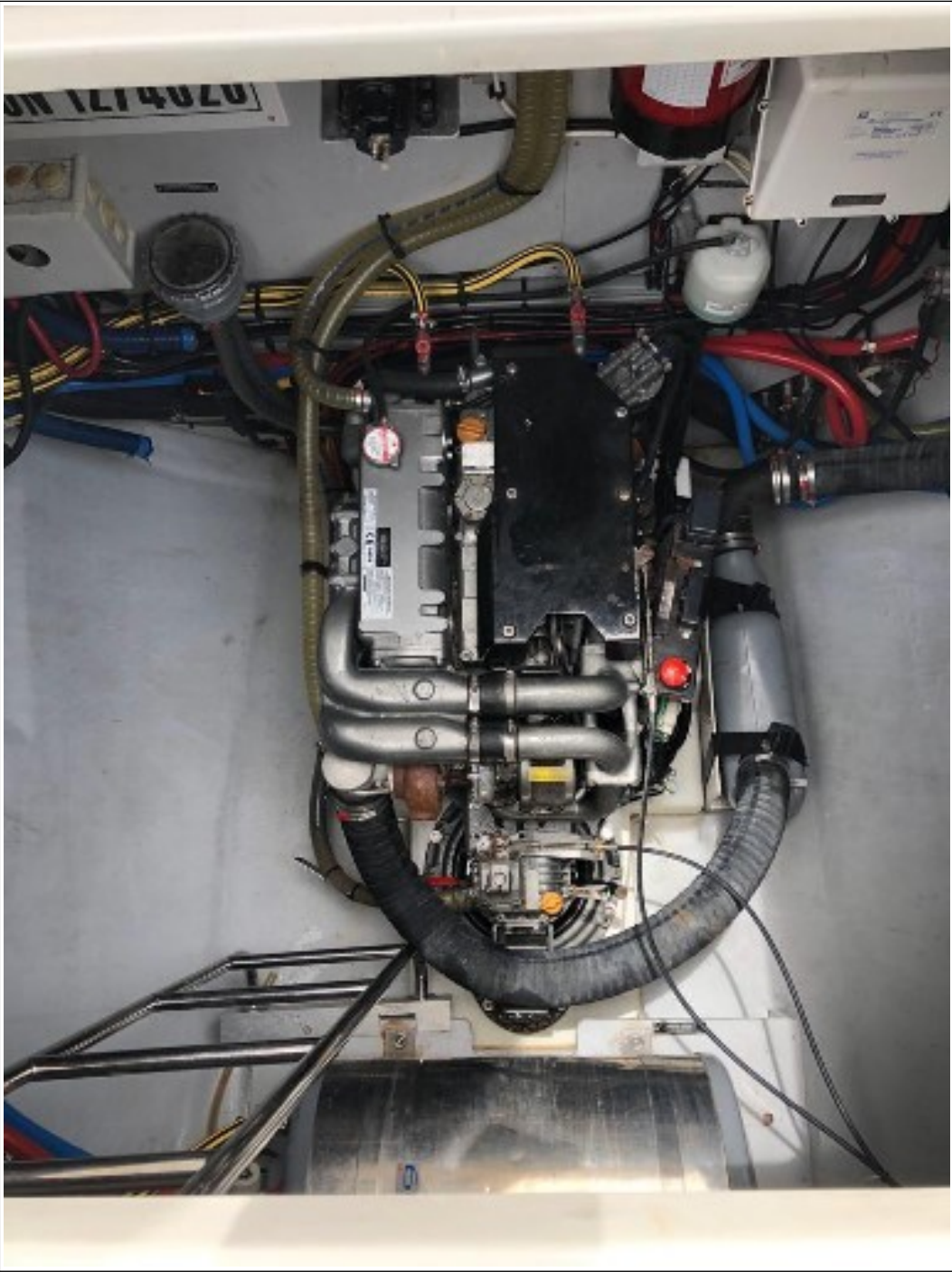


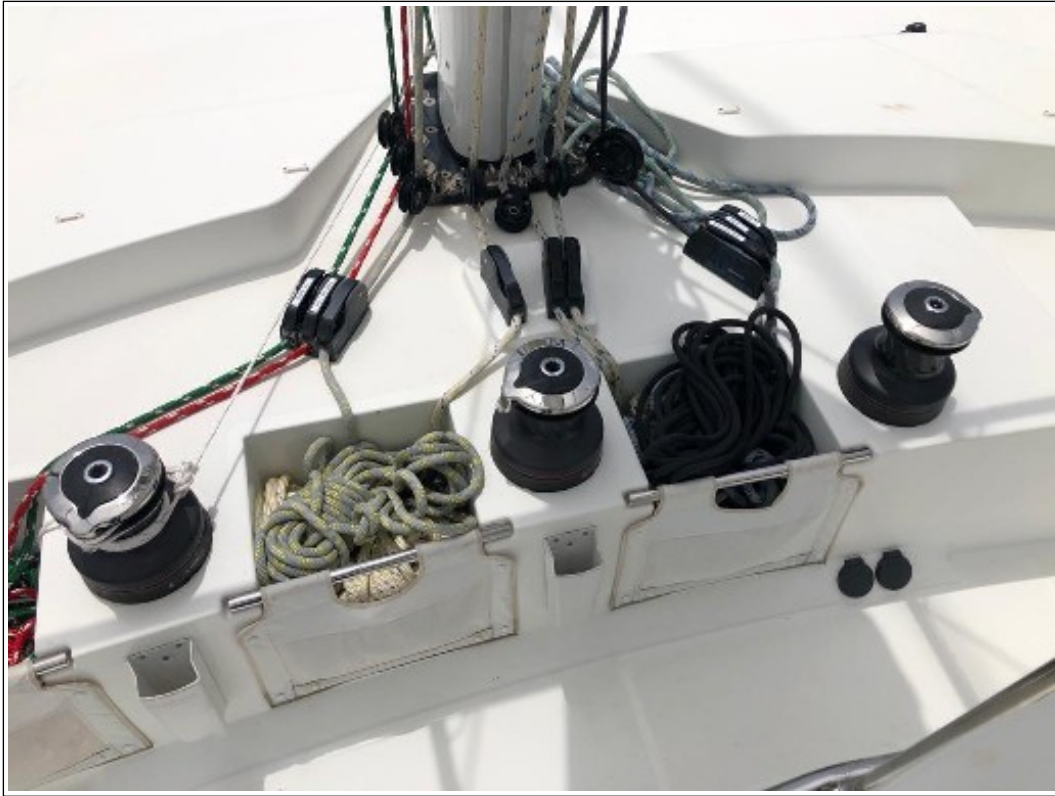












Disclaimer

The Company offers the details of this vessel in good faith but cannot guarantee or warrant the accuracy of this information nor warrant the condition of the vessel. A buyer should instruct his agents, or his surveyors to investigate such details as the buyer desired validated. This vessel is offered subject to prior sale, price change, or withdrawal without notice. Photos may not properly reflect the current condition of the actual vessel offered for sale. In some cases stock photographs may have been used.

Mechanical Disclaimer

Engine and generator hours are as of the date of the original listing and are a representation of what the listing broker is told by the owner and/or actual reading of the engine hour meters. The broker cannot guarantee the true hours. It is the responsibility of the purchaser and/or his agent to verify engine hours, warranties implied or otherwise and major overhauls as well as all other representations noted on the listing.

Dinghy Disclaimer

All dinghies are considered separate vessels and should have separate titles and documents. There is no guarantee as to the title of the dinghy on this vessel so Buyer accepts that while he may receive the dinghy included in the transaction, he may not receive the proper title to it.