

2010 Executive 38 AVATAR



Basic Vessel Summary

Manufacturer:	ADMIRAL
Model:	Executive 38
Model Year:	2010
Year Built:	2010
Type of Yacht:	Sail
Price:	\$219,000
Condition:	Used
Status:	Sold
Location	St George's Grenada
Manuf. Length:	38' (11.58 m)
Maximum Draft:	2' 9" (.84 m)
Minimum Draft:	2' 9" (.84 m)
Beam:	23' 95" (9.42 m)
LWL:	37' (11.28 m)
Mast Height Clearance:	57' 7" (17.55 m)

No. of Cabins:	3
No. of Heads:	2
Electric Circuit:	220 volt
Fuel Capacity:	95 g
Water Capacity:	95 g
Holding tank:	1
Weight - Displacement:	7.716 ton (15432 lb)
Hull Material:	Fiberglass Reinforced Plastic- FRP
Hull Configuration:	Catamaran
Engine Manufacturer	Yanmar
Engine Model	3YM30
Engine Year	2010
Engine Horsepower	30
Engine Hours (Port)	3000
Engine Hours (Starboard)	3000
Engine Type	InBoard
Engine Configuration	Twin
Engine Fuel Type	Diesel
Engine Condition	Used

[Boat Description:](#)

Avatar is a very clean 3 cabin owners version Admiral 38 Executive. The owners sailed from South Africa to Baltimore and then through the Bahamas to the Caribbean. This one-owner boat has never been chartered and has been well maintained by its attentive owners. The Admiral 38 is a very spacious, comfortable, and capable cruising catamaran and this one is well equipped for bluewater cruising.

Full Specification

[Layout & Accommodations](#)

Owners version 3 Cabin and 2 head.

Cockpit cushions.

Galley up.

Sunbrella sunshades.

Large cockpit table with foldable side and cooler box.

Dining table with seating for 8.

[Galley](#)

ISOTHERM CR 90 Stainless Steel Fridge.
ISOTHERM CR 130 Stainless Steel Freezer.
2 large stainless steel kitchen sinks.
3 Burner Smev gas hob.
Smev gas Oven with rotisserie.
Weber baby-1000 gas outdoor grill.
4 dinner plates, side plates and bowls.
Stainless steel oven tray.

Deck & Equipment

LEWMAR H3 WINDLASS - LEWMAR DECK foot switch. Remote windlass control panel at helm.
50m anchor chain, attached to 50m rode.
2 x 25kg Anchors with spare 20m chain.
Bridle and chain-hook.
Emergency stainless steel tiller.

Electronics & Navigation

RAYMARINE EVO AUTOPILOT.
RAYMARINE C90W chartplotter.
RAYMARINE ST 60+ wind, speed, depth and tridata.
ICOM IC-M422 VHF Radio with Command Mic.
RAYMARINE P70 Autopilot Control Head.
AIS Class B Transceiver

Electrical, Power & Plumbing

ELECTRICS: (12/220v).
ECHOTECH 150l/h / 40gal/h (engine driven watermaker).
6 Trojan 105, HOUSE Batteries (new 2019).
Engine start battery for each engine cockpit. CHARGING - STERLING ALTERNATOR TO BATTERY CHARGER.
ISOTEMP/INDEL Waterheater.
New Jabsco electric toilet macerator pump 2020.
New faucets in galley and shower 2020.
Start battery crossover switches.
2 x 180litre Stainless Steel fresh water tanks.
Pressurised hot/cold water system.
One manual and one Electric Jabsco Toilet.
Jabsco Par Max4 - Accumulator tank.

Black water tank.

Whale Gulper shower drain pumps in each bathroom(2).

WHALE manual bilge pump, with crossover.

WHALE Twist, hot/cold deck shower.

Johnson SPX Aqua Jet, Washdown system.

4 x Rule-Mate sensor bilge pumps 2839lph/ 750gph.

6 x 90W Solar Panels.

Victron Inverter Phoenix Multiplus. 2000w/80A/12vBEP Matrix DC/AC Battery monitor.

BEP Gas/Propane Detector.

220v Shore power cable.

Remote Bilge pump control panel in salon.

USB Charging ports in cabins and salon.

Pioneer Radio/CD/USB player.

Boss Marine speakers in Salon and Cockpit.

LED lights in Salon and cockpit.

12v Fluorescent Light in each cabin, shower and engine room.

220v Electrical outlets in every room/shower/salon.

2 x 4kg/9lbs propane/gas cylinders (1 house/1 Weber).

BEP GAS/Propane Solenoid.

New faucets in galley and shower 2020.

Hella fans in cabins and salon.

Engine & Mechanical

2x FLEXOFOLD 2-blade,(new in 2015)

Approx 3000hrs YANMAR 3YM30 (SAILDRIVE SD 20)DIESEL.

2 x 180l Aluminium Storage tanks.

Standard 80A Yanmar Alternators.

Racor Water Separators for each engine.

Sails & Rigging

RIGGING: MAST - SPARCRAFT, with boomvang FORESTAY - Harken Roller furling system. -

Spinlock Clutches/Jammers WINCHES: - HARKEN (three 46's in cockpit, two on mast).

New Dynema main halyard 2019.

MAIN - NORTH Fully battened.

Harken Batten Car System 2 Reefing points and topping lift.

GENOA - NORTH STACKPACK - NORTH/ with full front cover for sun protection).

Additional Information

House and engine starter batteries replaced 2019.

Current antifouling is Petit Trinidad Pro, January 2020,

Both SD20 Saildrive Shaft seals replaced in 2019,

Hauled every year in Trinidad where she is stored, covered at Power Boats. Maintenance such as oil and filter changes, is done yearly as are the propellers serviced.

In 2019 old antifouling was removed and taken down to gelcoat. International barrier epoxy coats were applied and we use Petit Trinidad Pro antifouling.

Image Gallery































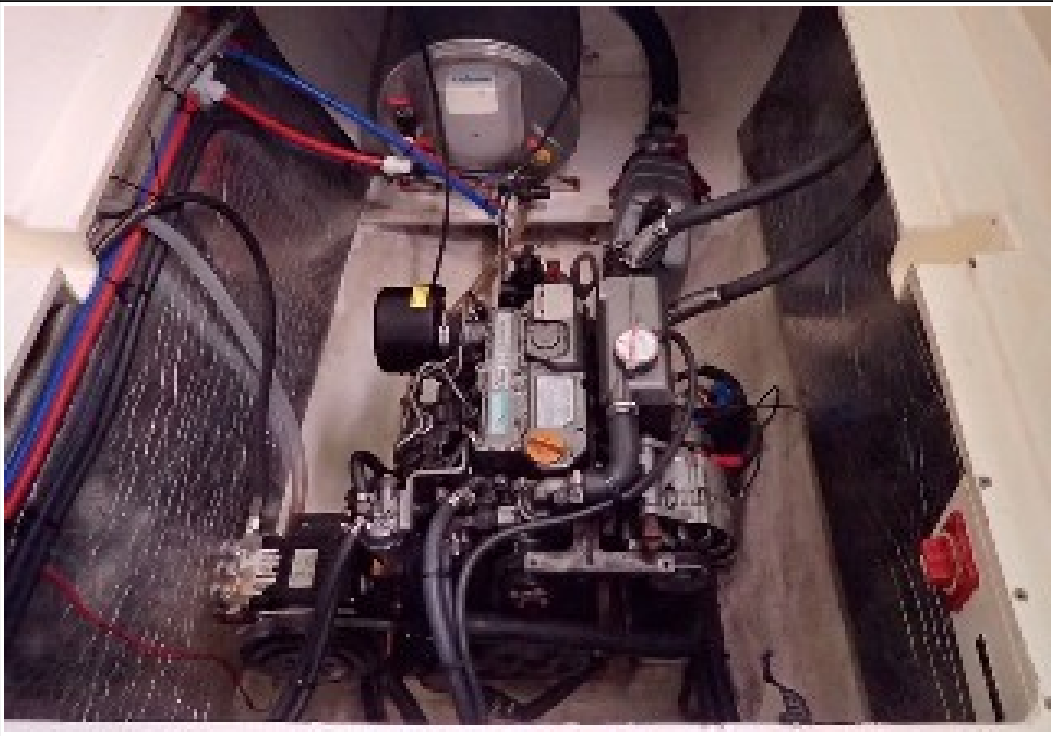
















Disclaimer

The Company offers the details of this vessel in good faith but cannot guarantee or warrant the accuracy of this information nor warrant the condition of the vessel. A buyer should instruct his agents, or his surveyors to investigate such details as the buyer desired validated. This vessel is offered subject to prior sale, price change, or withdrawal without notice. Photos may not properly reflect the current condition of the actual vessel offered for sale. In some cases stock photographs may have been used.

Mechanical Disclaimer

Engine and generator hours are as of the date of the original listing and are a representation of what the listing broker is told by the owner and/or actual reading of the engine hour meters. The broker cannot guarantee the true hours. It is the responsibility of the purchaser and/or his agent to verify engine hours, warranties implied or otherwise and major overhauls as well as all other representations noted on the listing.

Dinghy Disclaimer

All dinghies are considered separate vessels and should have separate titles and documents. There is no guarantee as to the title of the dinghy on this vessel so Buyer accepts that while he may receive the dinghy included in the transaction, he may not receive the proper title to it.